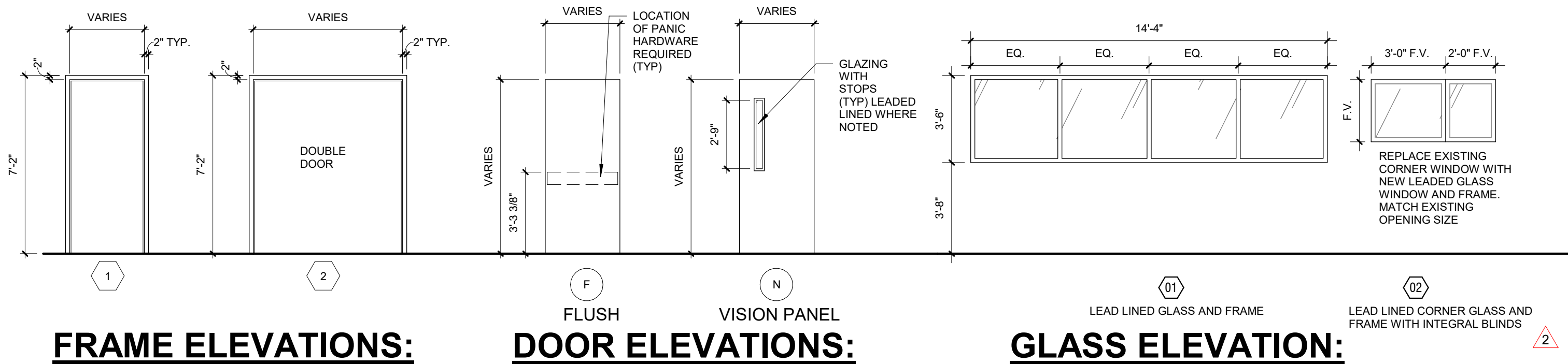
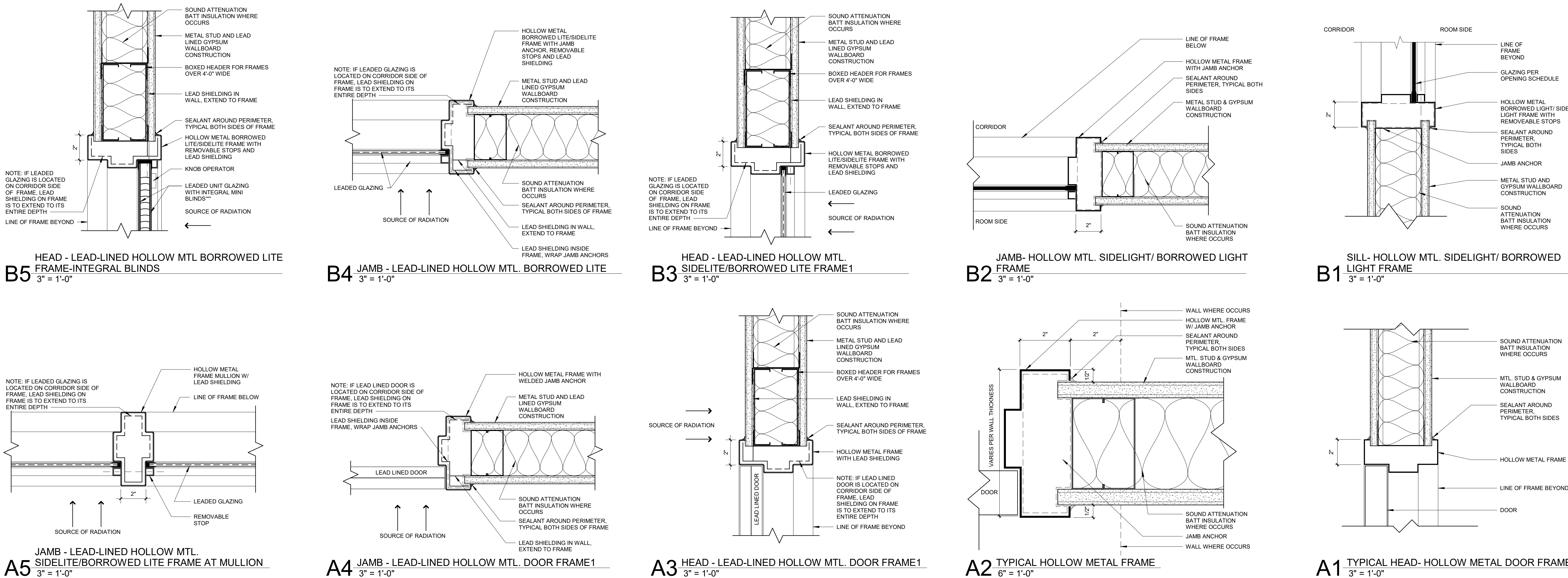


DOOR SCHEDULE																	
DOOR #	ROOM NAME	WIDTH	HEIGHT	DOOR INFORMATION			FRAME INFORMATION			LABEL (MIN)	HARDWARE SET	OPENING DETAIL		REMARKS	#	REV #	
				NO. OF LEAVES	UNEQUAL LEAF WIDTH	ELEV.	MATL.	ELEV.	MATL.			GLAZING	HEAD				JAMB
1A046	CLEAN ROOM	3'-0"	7'-0"	1		F	WD	1	HM	--	45 mm	4	ETR	ETR	EXISTING HARDWARE, DOOR, AND FRAME TO REMAIN		
1A047B	CONSULTATION ROOM	3'-0"	7'-0"	1		F	WD	1	HM	--	45 mm	3	A1	A2	PASSAGE SET		3
1A056	PATHOLOGY	3'-0"	7'-0"	1		F	WD	1	HM	--	--	5	A1	A2	NEW OFFICE SET, EXISTING DOOR AND FRAME		
1A058	S.V. OFFICE	3'-0"	7'-0"	1		F	WD	1	HM	--	--	5	A1	A2	NEW OFFICE SET, EXISTING DOOR AND FRAME		
1A079	EXISTING STORAGE	4'-0"	7'-0"	1		V	WD	1	HM	--	45 mm	4	ETR	ETR	EXISTING HARDWARE, DOOR, AND FRAME TO REMAIN		
1A082A	CONTROL ROOM	3'-0"	7'-0"	1		F	WD	1	HM	--	0 hr	4	ETR	ETR	EXISTING HARDWARE, DOOR AND FRAME TO REMAIN		
1A082B	EQUIP	4'-0"	7'-0"	1		F	WD	1	HM	--	--	1	A1	A2	STOREROOM SET		
1A083	HYBRID OR #1	4'-0"	7'-0"	2	2'-0"	F / F	WD	2	HM	--	--	2	A3	A4	WAVE TO OPEN WITH AUTO OPENER, LEAD LINED DOOR AND FRAME		
1A083B	HYBRID OR #1	4'-0"	7'-0"	1		F	WD	1	HM	--	--	3	A3	A4	NEW LEAD LINED DOOR AND FRAME, HOSPITAL LATCH		
1A084D	HYBRID OR #1	3'-0"	7'-0"	1		N	WD	1	HM	T	--	3	A3	A4	NEW LEAD LINED DOOR, WINDOW, AND FRAME, HOSPITAL LATCH		
1A094	STORAGE	4'-0"	7'-0"	1		N	WD	1	HM	FR	45 mm	7	A1	A2	STORAGE ROOM SET, RELOCATED CARD READER		

DOOR & FRAME MAT'L LEGEND	
T	1/4" CLEAR, TEMPERED GLAZING
HM	HOLLOW METAL
WD	SOLID CORE WOOD
ETR	EXISTING TO REMAIN
FR	FIRE-RATED, IMPACT RESISTANT SAFETY GLAZING



DOOR HARDWARE						
HARDWARE SET: 1						
DOOR NUMBER: 1A082B						
EACH TO HAVE:						
QTY DESCRIPTION	CATALOG NUMBER	FINISH	MFR			
3 EA HINGE	5B81HW	652	IVE			
1 EA STOREROOM LOCK	N080LD RHO	626	SCH			
1 EA CYLINDER BY OWNER		626	SCH			
1 EA KICK PLATE	8400 10" X 2" LDW B-CS	630	GLY			
1 EA WALL STOP	WS406407CCV	630	IVE			
1 EA GASKETING	48S8BK PSA	BK	ZER			
HARDWARE SET: 2						
DOOR NUMBER: 1A083						
EACH TO HAVE:						
QTY DESCRIPTION	CATALOG NUMBER	FINISH	MFR			
2 EA PIVOT SET	7215 SET	626	IVE			
2 EA INTERMEDIATE PIVOT	7215 INT	626	IVE			
2 EA MAGNETIC LOCK	M420P 1224 VDC	626	SCE			
TO INTERFERENCE WITH EQUIPMENT MANUFACTURER, IF REQUIRED						
2 EA PUSH PLATE	8200 4" X 16"	630	IVE			
2 EA DOOR PULL	8121 5"	626	IVE			
1 EA AUTO OPERATOR	4000 LE SERIES	689	HOR			
2 EA ACTUATOR, TOUCHLESS	8310-810S	630	LCN			
1 EA PRESENCE SENSOR	SUPERSCAN	630	BIA			
2 EA ARMOR PLATE	8402 34" X 1" LDW B-CS	630	IVE			
1 EA GASKETING	48S8BK PSA	BK	ZER			
1 EA ASTRAGAL	LEAD LINED BY DOOR SUPPLIER					
HARDWARE SET: 3						
DOOR NUMBER: 1A083B 1A084D						
EACH TO HAVE:						
QTY DESCRIPTION	CATALOG NUMBER	FINISH	MFR			
1 EA PIVOT SET	7215 SET	626	IVE			
1 EA INTERMEDIATE PIVOT	7215 INT	626	IVE			
1 EA PUSH/PULL LATCH	HL6 9010 2 3/4" A L	630	SCH			
1 EA SURFACE CLOSER	4404XP EDA	689	LCN			
1 EA KICK PLATE	8400 10" X 2" LDW B-N-H	630	IVE			
1 EA WALL STOP	WS406407CCV	630	IVE			
1 EA GASKETING	48S8BK PSA	BK	ZER			
HARDWARE SET: 4						
DOOR NUMBER: 1A046 1A079 1A082A						
EACH TO HAVE:						
QTY DESCRIPTION	CATALOG NUMBER	FINISH	MFR			
1 NOTE	EXISTING DOOR, FRAME AND HARDWARE TO REMAIN					
HARDWARE SET: 5						
DOOR NUMBER: 1A056 1A058						
EACH TO HAVE:						
QTY DESCRIPTION	CATALOG NUMBER	FINISH	MFR			
1 EA ENTRANCE LOCK	N010S RHO	626	SCH			
1 EA CYLINDER	BY OWNER	626	SCH			
EA NOTE	REMANINDER OF HARDWARE EXISTING					
HARDWARE SET: 6						
DOOR NUMBER: 1A047B						
EACH TO HAVE:						
QTY DESCRIPTION	CATALOG NUMBER	FINISH	MFR			
3 EA HINGE	5B81HW	652	IVE			
1 EA PASSAGE SET	N010S RHO	626	SCH			
1 EA SURFACE CLOSER	4404XP	689	LCN			
1 EA KICK PLATE	8400 10" X 2" LDW B-CS	630	IVE			
1 EA WALL STOP	WS406407CCV	630	IVE			
1 EA GASKETING	48S8BK PSA	BK	ZER			
HARDWARE SET: 7						
DOOR NUMBER: 1A094						
EACH TO HAVE:						
QTY DESCRIPTION	CATALOG NUMBER	FINISH	MFR			
1 EA NOTE	CARD ACCESS BY SECURITY	BIO				
1 EA NOTE	LOW VOLTAGE POWER BY SECURITY	BIO				
1 EA NOTE	REMANINDER OF HARDWARE EXISTING					
1 EA NOTE	WIRING DIAGRAM BY SECURITY	BIO				
OPERATION: DOOR NORMALLY CLOSED AND LOCKED. ENTRY VIA VALID CARD READ. ALWAYS FREE FOR EGRESS.						



DOOR AND HARDWARE NOTES

- DOOR OPENING DEVICES SHALL BE OPERABLE WITH ONE HAND AND SHALL NOT REQUIRE TIGHT GRASPING, TIGHT PINCHING, OR TWISTING OF THE WRIST. DOOR KNOBS ARE PROHIBITED.
- ALL MEANS OF EGRESS DOORS SHALL BE READILY OPENABLE FROM THE SIDE FROM WHICH EGRESS IS TO BE MADE WITHOUT THE USE OF SPECIAL TOOLS, A KEY, SPECIAL KNOWLEDGE OR EFFORT. DOUBLE KEYED DEAD BOLTS ARE PROHIBITED.
- PROVIDE HARDWARE INCLUDING, BUT NOT LIMITED TO THAT SHOWN IN THE HARDWARE GROUPS FOR THE NORMAL OPERATION AND USE OF EACH DOOR, MAKE RECOMMENDATIONS FOR ADDITIONAL ITEMS IN HARDWARE SUBMITTAL AS REQUIRED.
- ALL HARDWARE SHALL BE IN COMPLIANCE WITH ADA GUIDELINES AND NATIONAL BUILDERS HARDWARE ASSOCIATION STANDARDS.
- HARDWARE TO BE INSTALLED PER MANUFACTURER'S RECOMMENDATIONS.
- CONTRACTOR TO SUBMIT DOOR AND HARDWARE SHOP DRAWINGS TO OWNER FOR REVIEW PRIOR TO WORK BEING PERFORMED. FAILURE TO SUBMIT DRAWINGS RESULTS IN THE CONTRACTOR ASSUMING ALL RESPONSIBILITY AT THEIR OWN EXPENSE.
- OWNER WILL SUPPLY PERMANENT CORES.

STATE OF MISSOURI
SAMUEL
BECKWITH
ARCHITECT
7/27/2022 8:47:45 PM
License - Missouri WA-2011012130

ACI
BOLAND
ARCHITECTS

1710 Wyandotte
Kansas City, MO 64108
T: 816.763.9600

ACI/Boland, Inc.
Kansas City | St. Louis
Licensee's Certificate of Authority Number:
Missouri: #000958

MEP CONSULTANT

IMEG Corp.
1600 Baltimore, Suite 300
Kansas City, Missouri 64108
T: 816.842.8437
Licensee's Certificate of Authority Number:
Missouri: #F001325536

SLE HYBRID OR
100 NE Saint Luke's Blvd
Lee's Summit, MO 64086

Date 5/31/2022
Job Number 3-20034
Drawn By Author
Checked By Checker

Number	Date	Revision	Description
2	07.13.22		ADD #2 - CITY
3	07.22.22		ADD #3

A4.1
© 2022 ACI/BOLAND, Inc.
DOOR AND FRAME SCHEDULE AND DETAILS