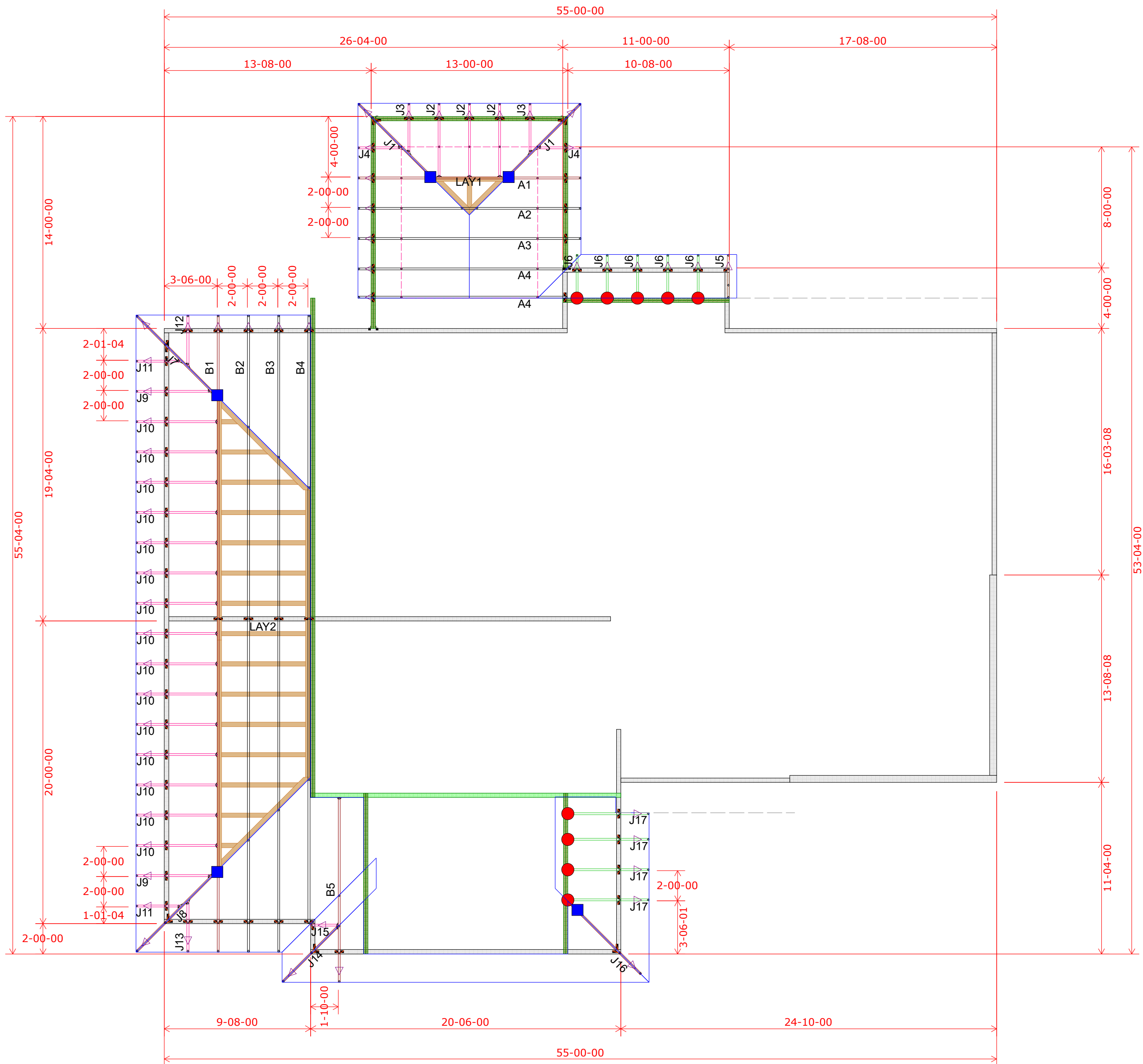


EVERSTEAD
SHOP DRAWINGS/SUBMITTAL REVIEW

SUBMITTAL WAS REVIEWED FOR DESIGN CONFORMITY
AND GENERAL CONFORMANCE TO CONTRACT
DOCUMENTS ONLY. THE CONTRACTOR IS RESPONSIBLE
FOR CONFIRMING AND CORRELATING DIMENSIONS AT
JOBSITE FOR TOLERANCE, CLEARANCE, QUANTITIES,
FABRICATION, COORDINATION OF HIS OR HER WORK
WITH OTHER TRADES, AND FULL COMPLIANCE WITH
CONTRACT DOCUMENTS.

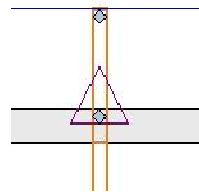
STATUS:
APPROVED
07/15/2022
REVIEWED BY:
BH
ENGINEER, EVERSTEAD



Roof Truss Layout
Scale: 3/16" = 1'

HANGER SCHEDULE	Quantity
LUS24	9
LUS26	0
HUS26	2
HHUS26-2	0
HGUS26-2	0
HGUS28-3	0
LTHJA26	0
TJC37	7
TJC57	4
HTS20	0

Triangle denotes the left end of the Truss as it appears on the Engineered Drawings provided.



Unless otherwise specified by Engineer Of Record, Wheeler Lumber, LLC recommends an uplift connection at each bearing point per the following:

# of Uplift	Connector
0 - 495:	(1) H2.5A
495 - 990:	(2) H2.5A
990 - 1245:	(1) HTS20

Installation per Simpson Strong-Tie guidelines.

For Reactions greater than 1245#, refer to EOR.

Wall Heights:
1st Floor = 9'-1-2 U.N.O.
2nd Floor = 8'-1-2 U.N.O.

Plate Heights
10-01-02

RELEASE FOR
CONSTRUCTION
AS NOTED ON PLANS REVIEW
Development Services
LEE'S SUMMIT, MISSOURI

Customer		Summit Homes	
Job Name		Lot 154 Highland Meadows	
Job Site Address		2750 SW 12th St	
City,	State	MO	
Designer	Lee's Summit		(785) 746-4266
7/7/2022		Job # B220102	

THIS IS A TRUSS PLACEMENT DIAGRAM ONLY. These trusses are designed as individual building components to be incorporated into the building design at the specification of the building designer. See individual design sheets for each truss design identified on the placement drawing. The building designer is responsible for temporary and permanent bracing of the trusses during construction. The building designer is responsible for providing adequate bracing for the walls and columns in the responsibility of the building designer for general guidance regarding bracing of wood trusses, available from the Truss Plate Institute, 583 Dornino Drive, Madison, WI 53179.

THIS LAYOUT IS THE SOLE SOURCE FOR FABRICATION OF TRUSSES AND VOIDS ALL PREVIOUS ARCHITECTURAL OR OTHER TRUSS LAYOUTS. REVIEW AND APPROVAL OF THIS LAYOUT MUST BE RECEIVED BEFORE ANY TRUSSES WILL BE BUILT. VERIFY ALL CONDITIONS TO INSURE AGAINST CHANGES THAT WILL RESULT IN EXTRA CHARGES TO YOU.

Shop Drawing Approval

Wheeler Lumber
1959 Old Hwy 50 NE
Waverly, KS 66871

EVERSTEAD
SHOP DRAWINGS/SUBMITTAL REVIEW

SUBMITTAL WAS REVIEWED FOR DESIGN CONFORMITY AND GENERAL CONFORMANCE TO CONTRACT DOCUMENTS ONLY. THE CONTRACTOR IS RESPONSIBLE FOR CONFIRMING AND CORRELATING DIMENSIONS AT JOBSITE FOR TOLERANCE, CLEARANCE, QUANTITIES, FABRICATION, COORDINATION OF HIS OR HER WORK WITH OTHER TRADES, AND FULL COMPLIANCE WITH CONTRACT DOCUMENTS.

STATUS:

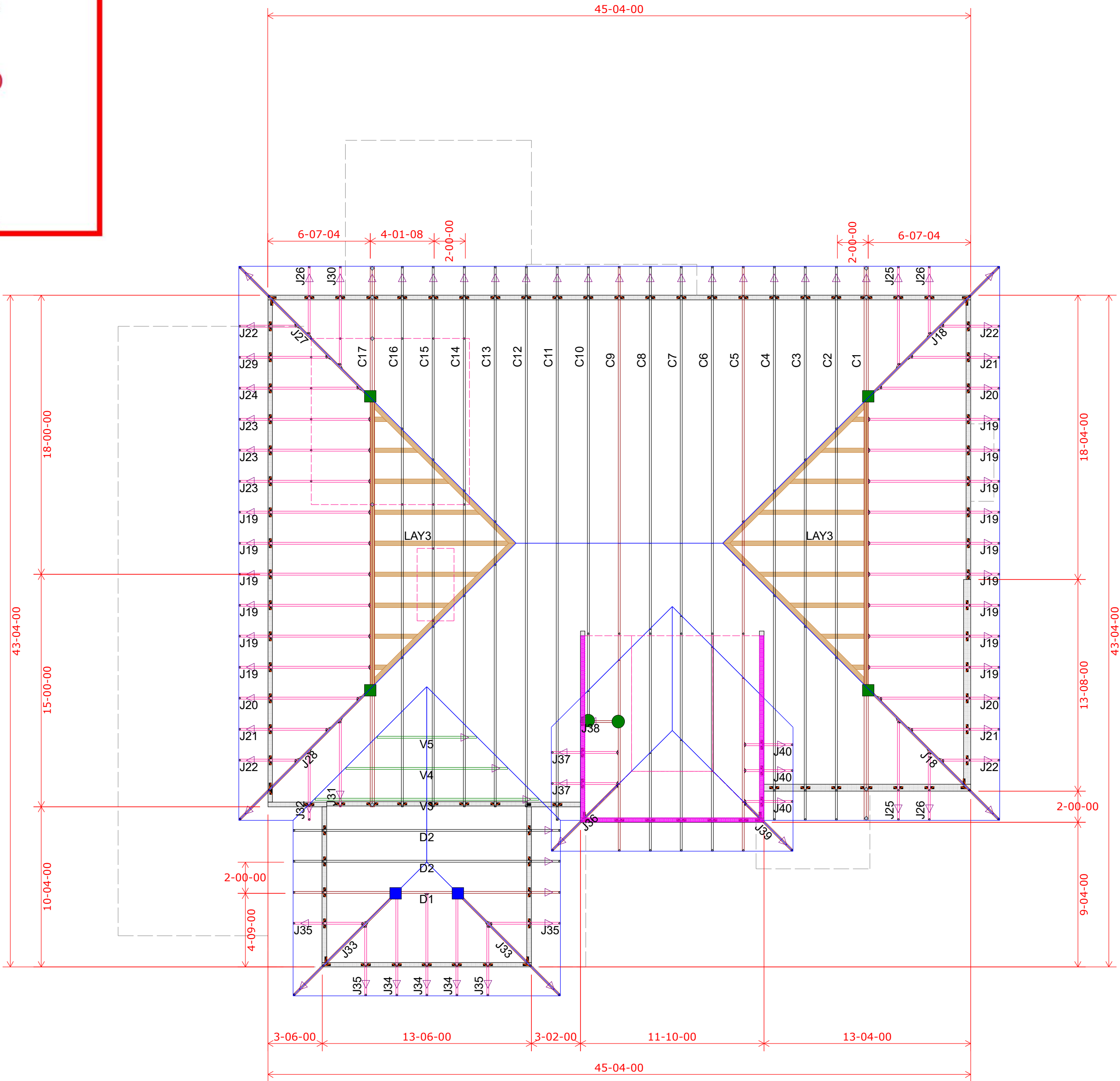
APPROVED

07/15/2022

REVIEWED BY:

BH

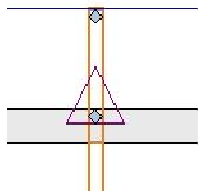
ENGINEER, EVERSTEAD



Wall Heights:	
1st Floor = 9-1-2 U.N.O.	
2nd Floor = 8-1-2 U.N.O.	
Plate Heights	
10-01-02	

HANGER SCHEDULE	Quantity
LUS24	9
LUS26	0
HUS26	2
HHUS26-2	0
HGUS26-2	0
HGUS28-3	0
LTHJA26	0
TJC37	7
TJC57	4
HTS20	0

Triangle denotes the left end of the Truss as it appears on the Engineered Drawings provided.



Unless otherwise specified by Engineer Of Record, Wheeler Lumber, LLC recommends an uplift connection at each bearing point per the following:

# of Uplift	Connector
0 - 495:	(1) H2.5A
495 - 990:	(2) H2.5A
990 - 1245:	(1) HTS20

Installation per Simpson Strong-Tie guidelines.

For Reactions greater than 1245#, refer to EOR.

Customer	Summit Homes				
Job Name	Lot 154 Highland Meadows				
Job Site Address	2750 SW 12th St				
City,	State	Lee's Summit		MO	
Designer	Chuck Haspels (785) 746-4266				
7/7/2022	Job # B220102				