

July 8, 2022

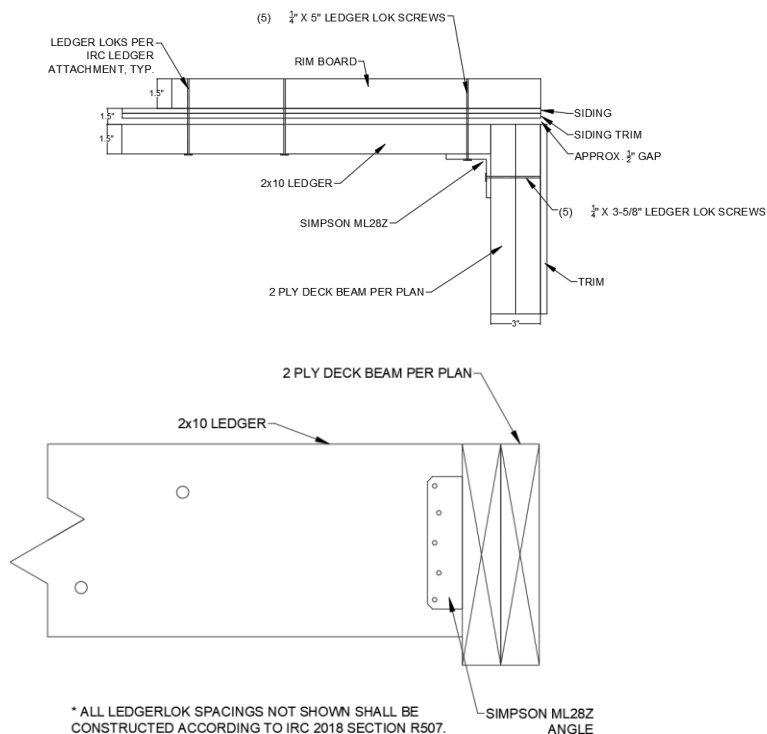
Clover & Hive
120 SE 30th St.
Lee's Summit, MO 64082

**RE: Field Issue of deck/ledger connection for Lot #23 Osage 3817 SW Walsh Drive/ 3819 SW Walsh Drive–
Lee's Summit, MO 64082 – PRRES20213052**

- (2) 2 x 12 deck beam is supported by 6x6 cedar post and footing at one end.
- (2) 2 x 12 deck beam is supported by a ledger connection and Simpson ML28Z bracket on the other end.
- End 2 x 10 joist is supported by ledger connection to exterior wall at both ends.

Recommended modifications:

- Remove post and attach Simpson ML28Z angle as shown in image below:



Sincerely,



Bradley Huxol, PE