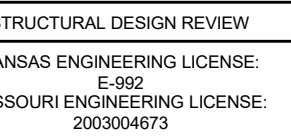
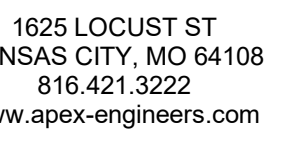


1. SUBGRADE: ORIGINAL UNDISTURBED SOIL. COMPACTED AB-3 OR APPROVED EQUIVALENT L.V.C. MATERIAL PER GEOTECHNICAL ENGINEER'S RECOMMENDATIONS.
2. ASSUMED 2000 PSF SOIL BEARING CAPACITY (TO BE VERIFIED BY GEOTECHNICAL ENGINEER PRIOR TO FOOTING PLACEMENT).
3. CONCRETE REINFORCING STEEL (REBAR) TO **BE GRADE 40.**
4. MINIMUM 3500 PSI COMPRESSIVE CONCRETE STRENGTH.
5. AIR ENTRAINMENT BETWEEN 5% - 7% OF CONC VOLUME.
6. LAP SPICES 24" MIN.
7. WALL DESIGNED TO RETAIN EARTHEN BACK-FILL ONLY WITH NO ADDITIONAL SURCHARGE LOAD.



185 SW WINTER RD
LEE'S SUMMIT, MO

CLIENT:
GALE HOMES

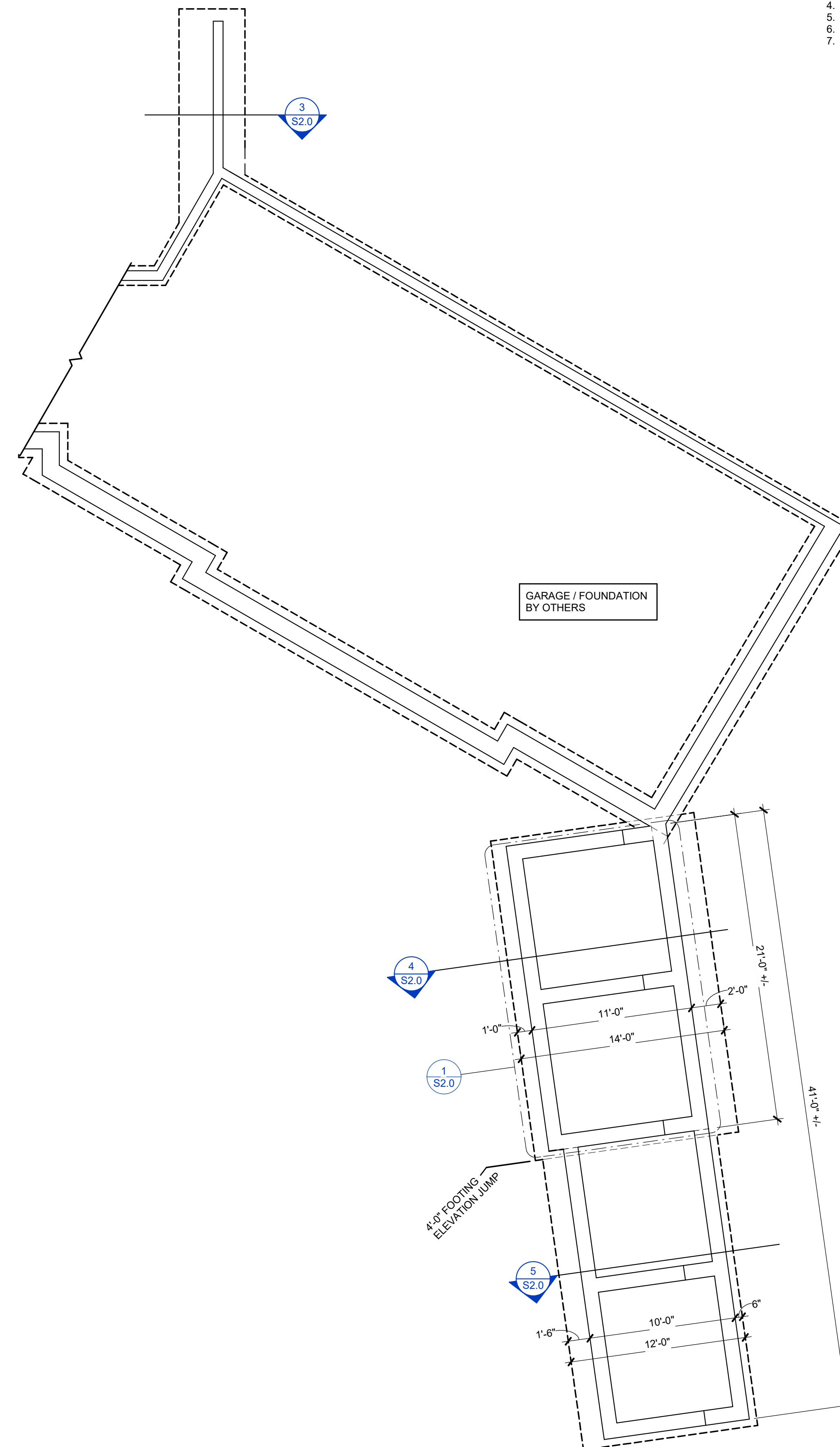
PROJECT #:	22-186
DRAWN BY:	APE
CHECKED BY:	CJ
SUBMITTAL DATE:	7/8/2022

[illegible]

7/11/2022 3:31:00 PM

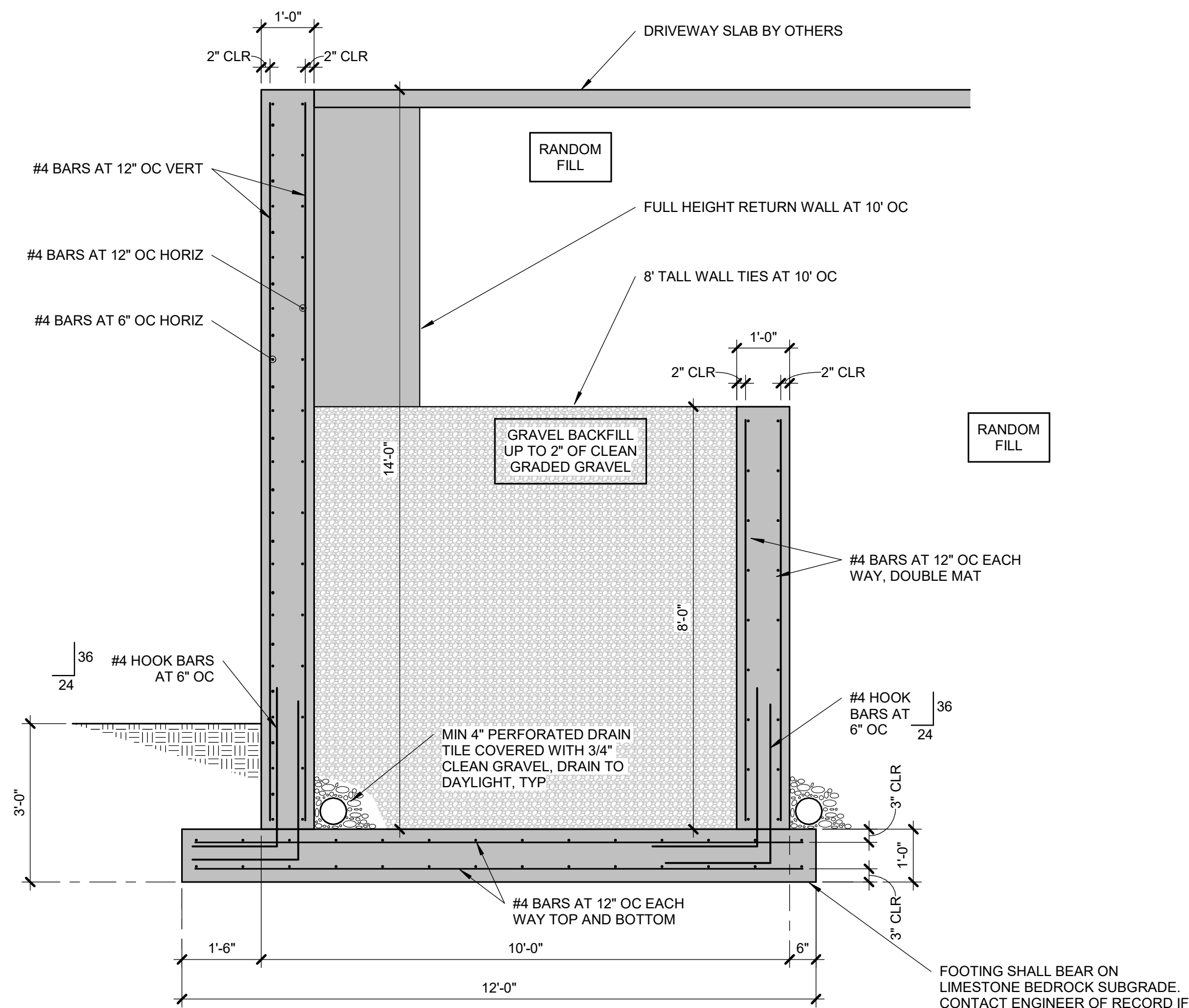
RETAINING WALL PLAN

S1.0

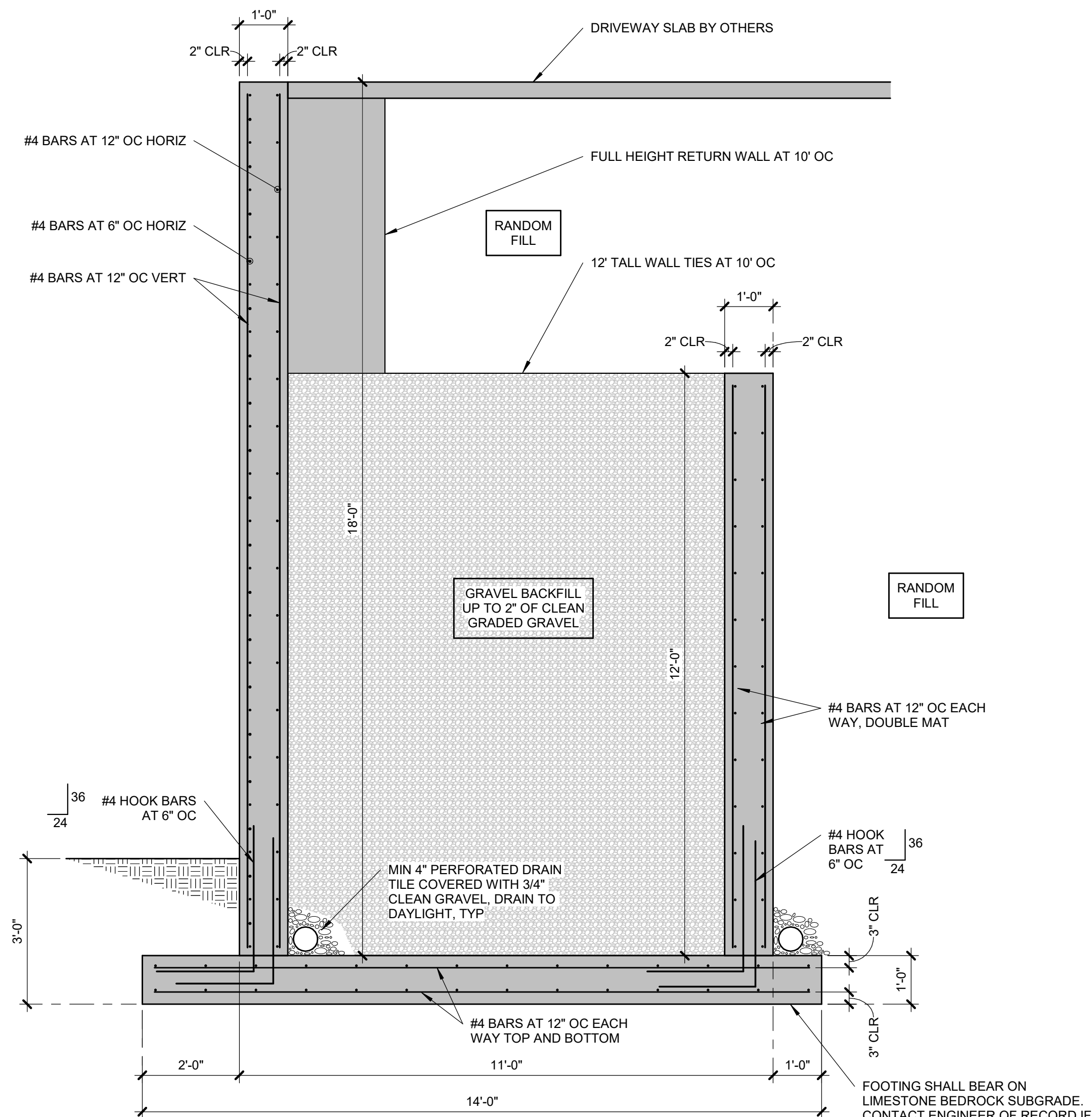


RETAINING WALL PLAN

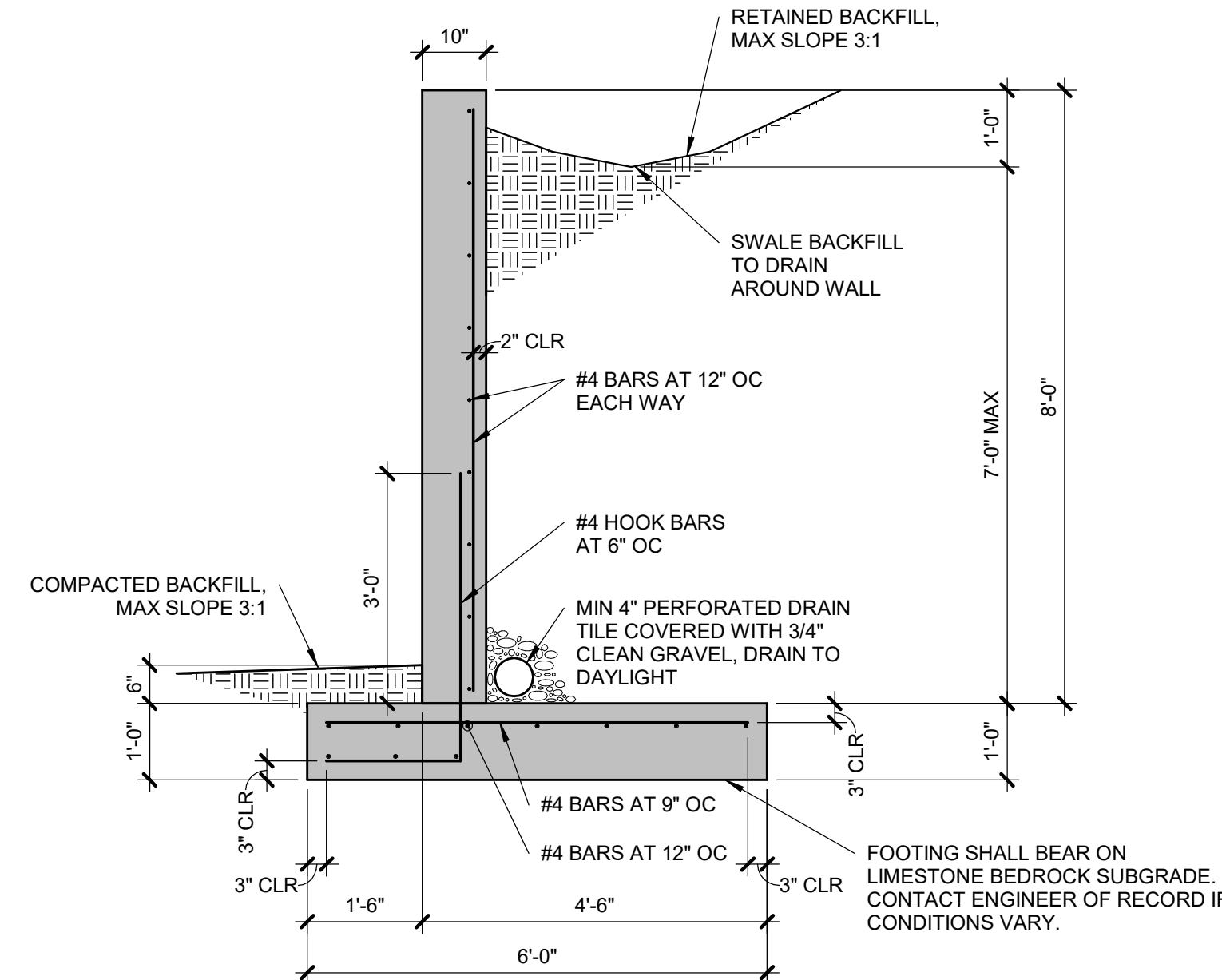
$$3/16'' = 1'-0''$$



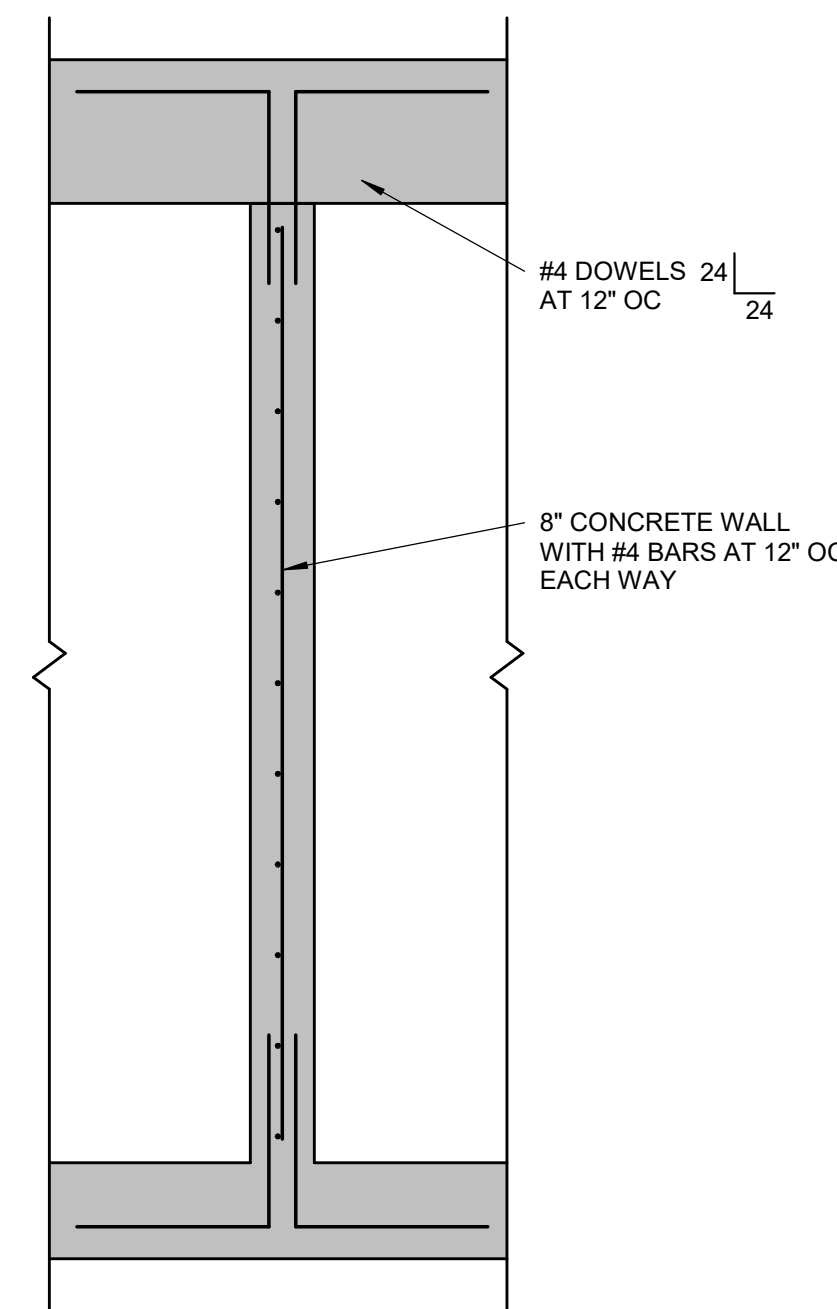
5 | 14'-0" RETAINING WALL
S2.0 NO SCALE
THIS DETAIL IS TYPICAL TO THE PROJECT AND MAY NOT BE CUT OR CALLED OUT ON PLANS



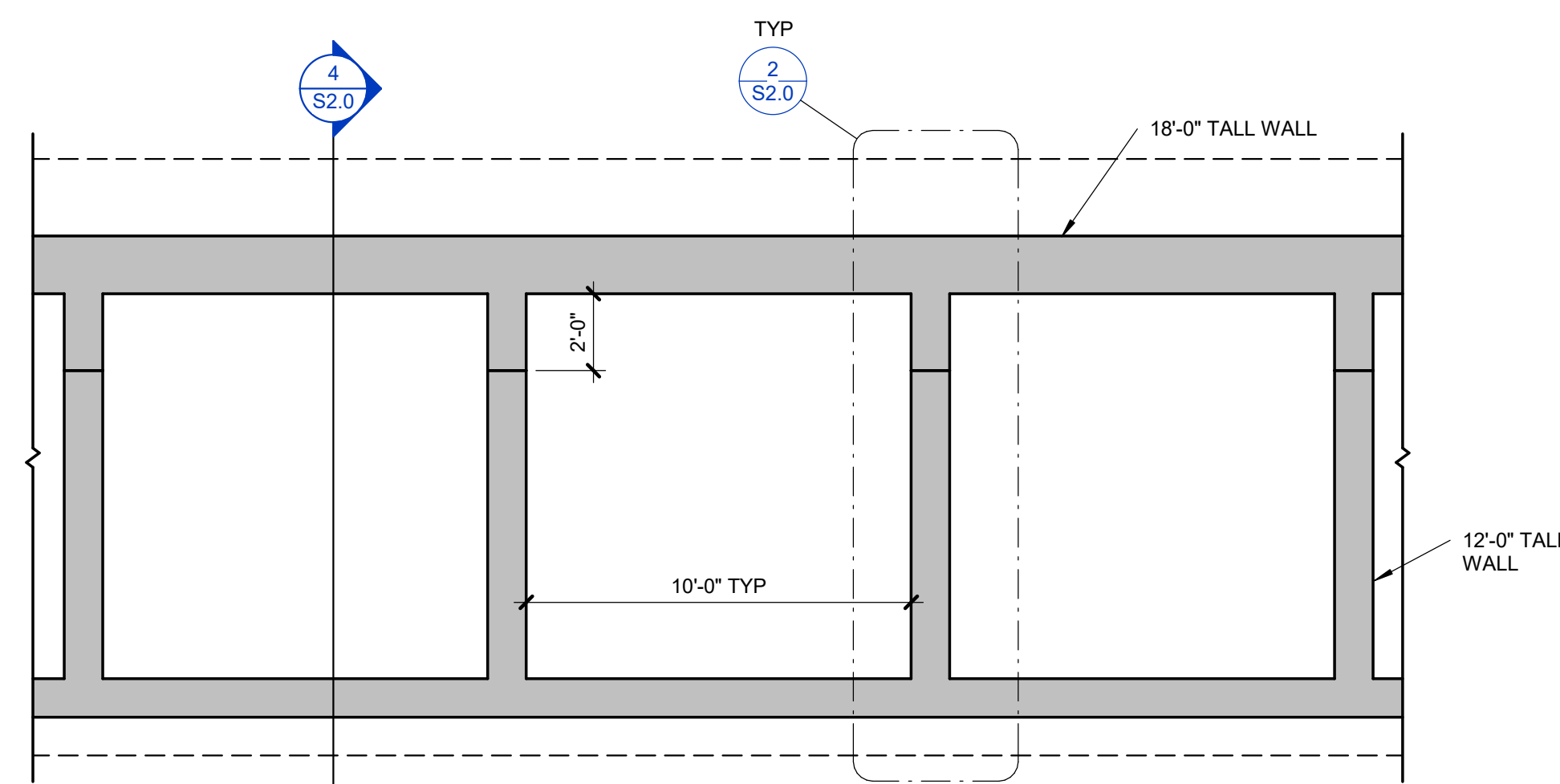
4 | 18'-0" RETAINING WALL
S2.0 NO SCALE
THIS DETAIL IS TYPICAL TO THE PROJECT AND MAY NOT BE CUT OR CALLED OUT ON PLANS



3 | 8'-0" RETAINING WALL
S2.0 NO SCALE
THIS DETAIL IS TYPICAL TO THE PROJECT AND MAY NOT BE CUT OR CALLED OUT ON PLANS



2 | WALL REINFORCING
S2.0 NO SCALE
THIS DETAIL IS TYPICAL TO THE PROJECT AND MAY NOT BE CUT OR CALLED OUT ON PLANS



1 | RETAINING WALL PLAN VIEW
S2.0 NO SCALE
THIS DETAIL IS TYPICAL TO THE PROJECT AND MAY NOT BE CUT OR CALLED OUT ON PLANS