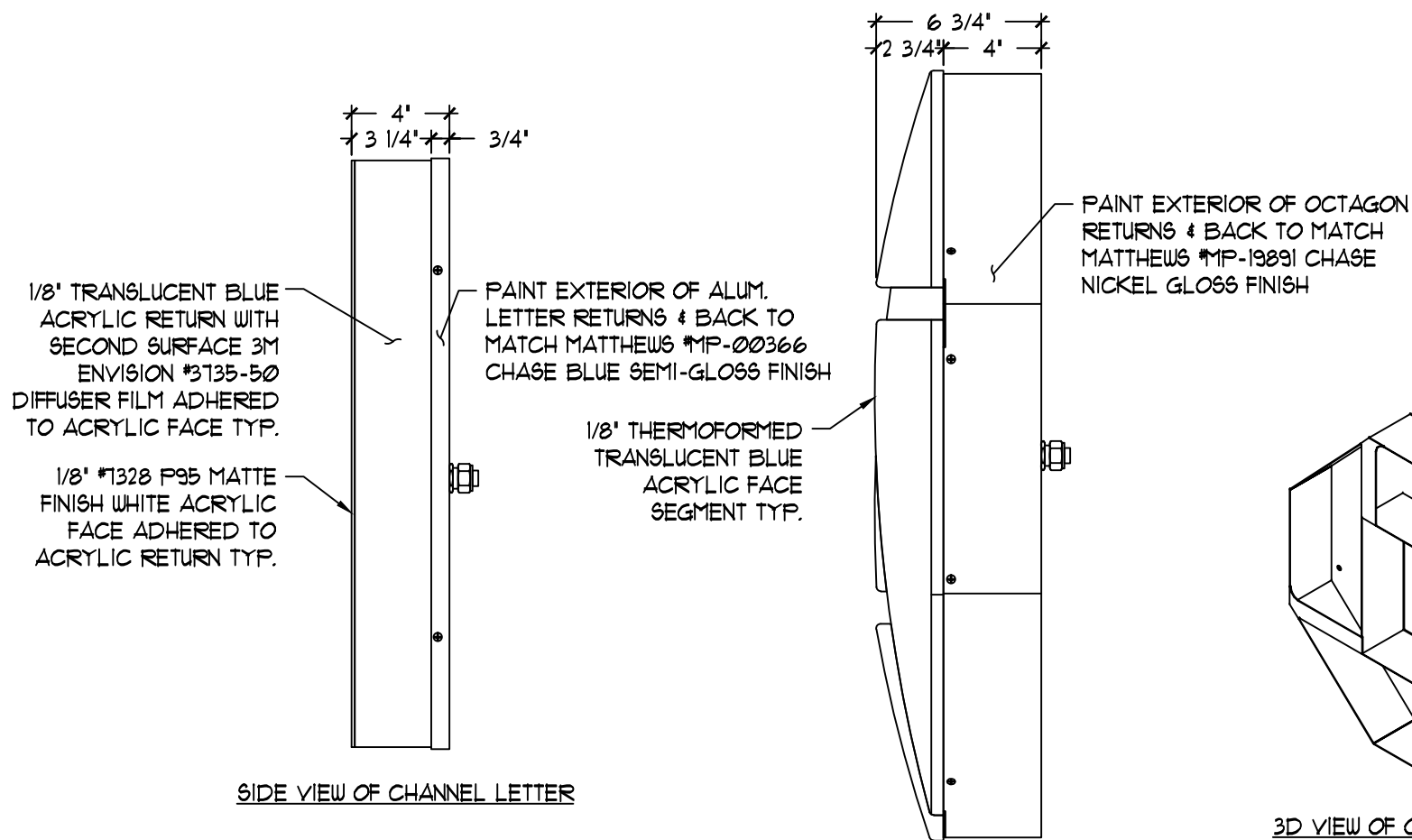


ELEVATION & MOUNTING LOCATIONS

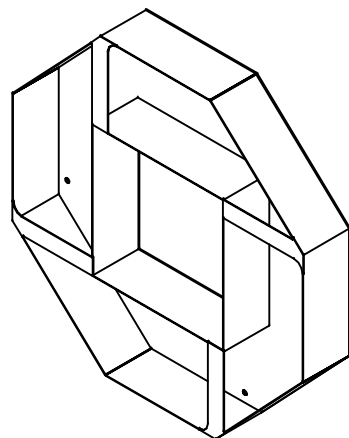


SIDE VIEW OF CHANNEL LETTER

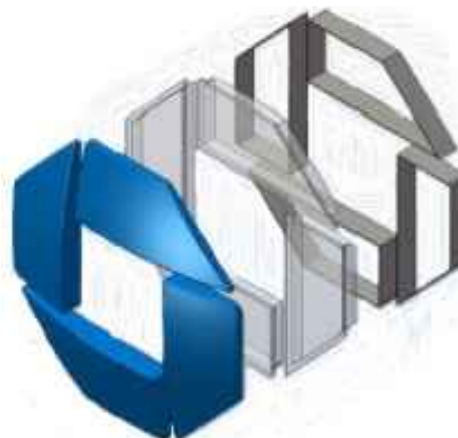
SIDE VIEW OF OCTAGON

SEE SHEET 1 OF 1 FOR PREFERRED DISCONNECT SWITCH LOCATION FOR REMOTE, NON-PARAPET WALL INSTALLATION

ALL EXPOSED FASTENER HEADS SHALL BE PAINTED TO MATCH THE EXTERIOR CABINET FINISH



3D VIEW OF OCTAGON CABINET



3D VIEW OF OCTAGON

General Notes:

- Design is based on a 115 mph, 3 second gust wind design per IBC 2012 (ASCE 7-10), Category II, Exposure C. Components and Cladding Zone 5.
- No additional wind catching surfaces are added to the building structure. The customer's building engineer is to determine the adequacy of the supporting structure.
- Extruded aluminum shapes shall be 6061-T6 alloy. Aluminum sheet shall be 3003-H14 alloy. Aluminum plate shall be 5052-H34 alloy.
- All welds shall be made using a 4000 series filler for aluminum by persons qualified in accordance with AWS standards within the past two years.
- All fasteners shall be stainless steel or zinc coated to prevent corrosion.
- All wall penetrations shall be sealed to prevent water penetration.
- J.P. Morgan Chase will not be responsible for the safety on this job site before, during or after installation of this structure. It is the responsibility of the contractors and installers to ensure that the installation and erection of this structure is performed using methods that are in full compliance with OSHA regulations.
- Any deviation from this design or from any part of this drawing, including the General Notes, without prior written consent from J.P. Morgan Chase voids this drawing in its entirety.
- The structure designed on this drawing is prototypical and should not be used for site specific applications unless deemed suitable by a Competent Professional Engineer.

3/28/12	ADDED SWITCH LOCATION ILLUSTRATION TO SHEET 3 OF 3 FOR REMOTE, NON-PARAPET APPLICATION	TRR	IK	8/21/13	CHANGED SEALTITE CONDUIT TO EMT # PARAPET LOCATIONS	ART	IK	3/21/11	CHANGED SLOAN V100 LEDS TO SLOAN PRISM	TRR	IK
2/3/12	ADDED PARAPET WALL DETAILS, REVISED ELECTRICAL ENTRANCE LOCATIONS, CHANGED TO ELECT. TRANS.	TRR	IK	5/11/12	ADDED SWITCH EXCEPTION NOTE	GHK	IK	6/15/16	CHANGED PERM-LIGHT LEDS TO SLOAN	TRR	IK
8/02/10	CHANGED LOGO BRIDGE PLATE COLOR TO PAINT TO MATCH BUILDING	TMD	IK	4/5/12	CHANGED ELECT. TRANSFORMERS BACK TO ELECTROMAGNETIC TRANSFORMERS	TRR	IK	9/26/14	CONVERTED TO LED ILLUMINATION FROM NEON	TRR	IK



These documents represent prototypical design drawings created specifically for use by J.P. Morgan Chase. Use of this unpublished work for any purpose other than the intended application is strongly discouraged. Disclosure or reproduction of any of the information contained within these documents without the written consent of the owner is strictly prohibited.

SHT.
1
OF
7

BY:

TRR

DATE:

12/30/08

Project No.

08-1218

Drawing No.

B244005

REV.

DATE

12/31/09

12/29/09

5/13/09

DESCRIPTION

REVISED NEON BRIDGE IN LETTERS

REVISED NEON FOOTAGE & TRANSFORMERS

MOVED MOUNTING LOCATIONS TO AVOID NEON

REVISED OCTAGON BRIDGE

CHANGED NEON FROM SINGLE TO DOUBLE STROKE, CHANGED ALUM. RETURN

CALL-OUT FROM #800 TO #807, CHANGED ELECTRICAL CONNECTION

FROM LIQUID TO SEAL TYPE, ADDED TRANSFORMER & ADDED OR

EQUAL TO HILT CALL-OUT & ADDED PIPE SPACER NOTE

TRR

IK

TRR

IK

TMD

IK

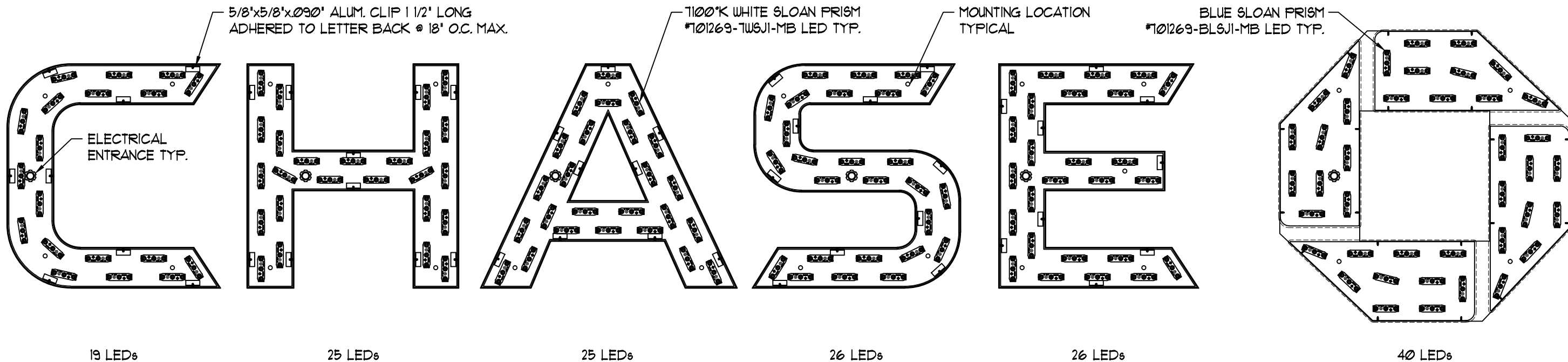
BY:

APR

GRAPHICS DEPICTED ARE FOR ILLUSTRATIVE PURPOSES ONLY! USE ONLY APPROVED ARTWORK FOR PRODUCTION.

DESIGNATION:

LIF-WBO-24



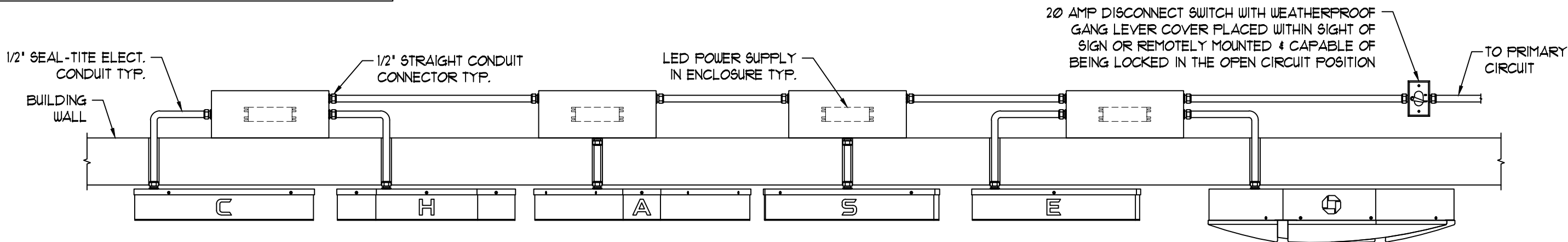
LED LAYOUT

ELECTRICAL REQUIREMENTS:

LEDs: (121) 1100°K WHITE SLOAN PRISM #101269-TWSJI-MB
(40) BLUE SLOAN PRISM #101269-BLSJI-MB
POWER SUPPLY: (4) SLOAN 60CI 60W #101507-60CI @ 0.1A
TOTAL LOAD: 2.8A @ 120VAC
CIRCUITS: (1) 20 AMP REQUIRED

ALL PRIMARY & SECONDARY
WIRING MUST BE GROUNDED
PER ALL APPLICABLE UL AND
NEC GUIDELINES

SEE SHEET 1 OF 1 FOR PREFERRED DISCONNECT
SWITCH LOCATION FOR REMOTE, NON-PARAPET
WALL INSTALLATION



WIRING DIAGRAM FOR REMOTE, NON-PARAPET WALL INSTALLATION

3/28/12	ADDED SWITCH LOCATION ILLUSTRATION TO SHEET 3 OF 3 FOR REMOTE, NON-PARAPET APPLICATION	TRR	IK	8/21/13	CHANGED SEALTITE CONDUIT TO EMT @ PARAPET LOCATIONS	ART	IK	3/21/11	CHANGED SLOAN V100 LEDs TO SLOAN PRISM	TRR	IK
2/3/12	ADDED PARAPET WALL DETAILS, REVISED ELECTRICAL ENTRANCE LOCATIONS, CHANGED TO ELECT. TRANS.	TRR	IK	5/11/12	ADDED SWITCH EXCEPTION NOTE	GHK	IK	6/15/16	CHANGED PERM-LIGHT LEDs TO SLOAN	TRR	IK
8/02/10	CHANGED LOGO BRIDGE PLATE COLOR TO PAINT TO MATCH BUILDING	TMD	IK	4/5/12	CHANGED ELECT. TRANSFORMERS BACK TO ELECTROMAGNETIC TRANSFORMERS	TRR	IK	9/26/14	CONVERTED TO LED ILLUMINATION FROM NEON	TRR	IK



These documents represent prototypical design drawings created specifically for use by J.P. Morgan Chase. Use of this unpublished work for any purpose other than the intended application is strongly discouraged. Disclosure or reproduction of any of the information contained within these documents without the written consent of the owner is strictly prohibited.

SHT.
2
OF
7

BY:
TRR
DATE:
12/30/08

Project No.
08-1218
Drawing No.
B244005

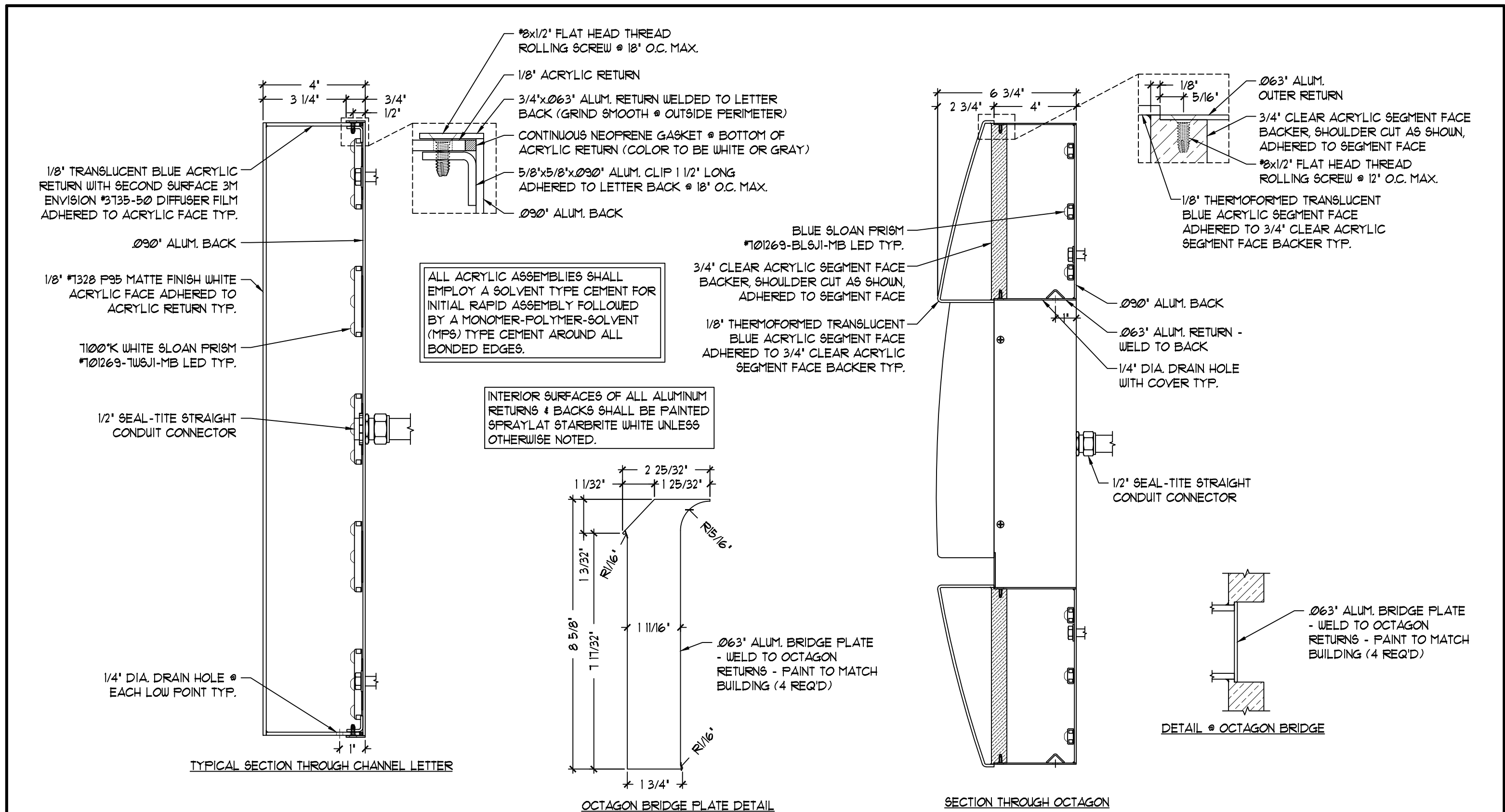
REV. DATE
12/31/09
12/29/09
5/13/09

DESCRIPTION
REVISED NEON BRIDGE IN LETTERS
REVISED NEON FOOTAGE & TRANSFORMERS
MOVED MOUNTING LOCATIONS TO AVOID NEON
CHANGED NEON FROM SINGLE TO DOUBLE STROKE, CHANGED ALUM. RETURN
CALL-OUT FROM #80P TO #80T, CHANGED ELECTRICAL CONNECTION
FROM LIGUID TO SEAL TYPE, ADDED TRANSFORMER & ADDED OR
EQUAL TO HILT CALL-OUT & ADDED PIPE SPACER NOTE

BY: APR

GRAPHICS DEPICTED ARE FOR
ILLUSTRATIVE PURPOSES ONLY!
USE ONLY APPROVED ARTWORK
FOR PRODUCTION.

DESIGNATION:
LIF-WBO-24



3/28/12	ADDED SWITCH LOCATION ILLUSTRATION TO SHEET 3 OF 3 FOR REMOTE, NON-PARAPET APPLICATION	TRR	IK	8/21/13	CHANGED SEALTITE CONDUIT TO EMT @ PARAPET LOCATIONS	ART	IK	3/21/11	CHANGED SLOAN V100 LED® TO SLOAN PRISM	TRR	IK
2/3/12	ADDED PARAPET WALL DETAILS, REVISED ELECTRICAL ENTRANCE LOCATIONS, CHANGED TO ELECT. TRANS.	TRR	IK	5/11/12	ADDED SWITCH EXCEPTION NOTE	GHK	IK	6/15/16	CHANGED PERFLIGHT LED® TO SLOAN	TRR	IK
8/02/10	CHANGED LOGO BRIDGE PLATE COLOR TO PAINT TO MATCH BUILDING	TMD	IK	4/5/12	CHANGED ELECT. TRANSFORMERS BACK TO ELECTROMAGNETIC TRANSFORMERS	TRR	IK	9/26/14	CONVERTED TO LED ILLUMINATION FROM NEON	TRR	IK

CHASE

These documents represent prototypical design drawings created specifically for use by J.P. Morgan Chase. Use of this unpublished work for any purpose other than the intended application is strongly discouraged. Disclosure or reproduction of any of the information contained within these documents without the written consent of the owner is strictly prohibited.

SHT.

3

BY:

TRR

Project No.

08-1218

REV.

DATE

12/30/08

Drawing No.

B244005

DESCRIPTION

BY:

APR

DATE

12/31/09

12/29/09

5/13/09

REVISIONS

REVISED NEON BRIDGE IN LETTERS

REVISED NEON FOOTAGE & TRANSFORMERS

MOVED MOUNTING LOCATIONS TO AVOID NEON

REVISED OCTAGON BRIDGE

CHANGED NEON FROM SINGLE TO DOUBLE STROKE, CHANGED ALUM. RETURN

CALL-OUT FROM Ø90" TO Ø63", CHANGED ELECTRICAL CONNECTION

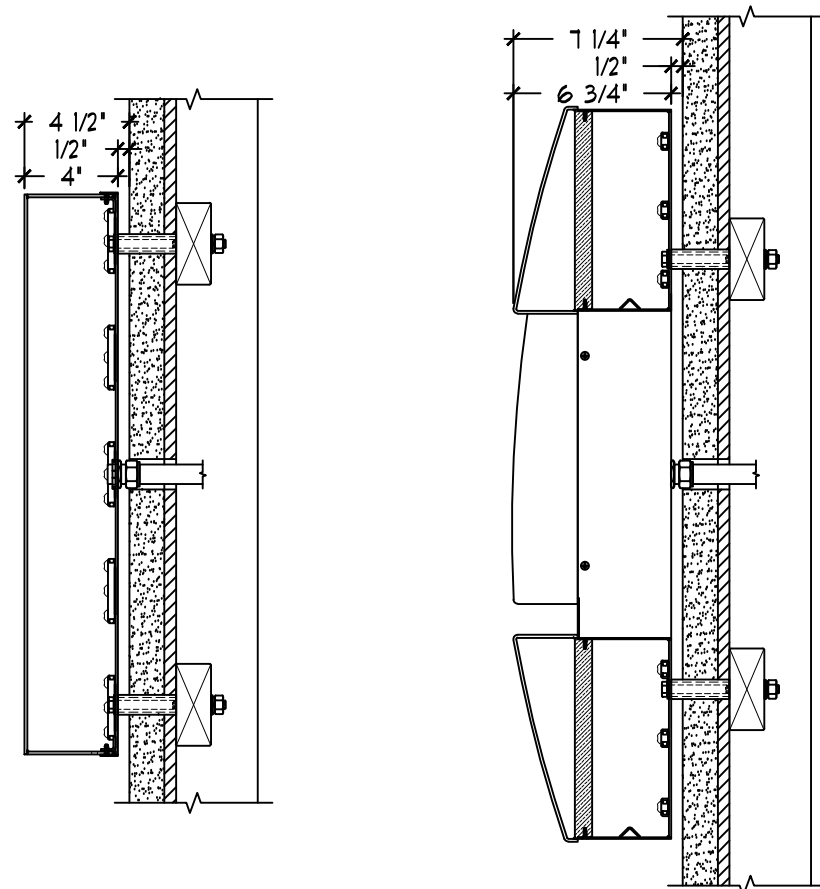
FROM LIGUID TO SEAL TYPE, ADDED TRANSFORMER & ADDED OR

EQUAL TO HILT CALL-OUT & ADDED FIVE SPACER NOTE

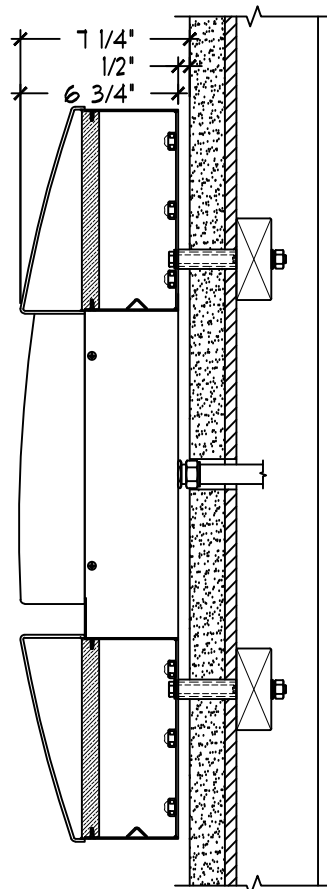
TRR IK || TRR | IK |
| TMD | IK |

GRAPHICS DEPICTED ARE FOR ILLUSTRATIVE PURPOSES ONLY! USE ONLY APPROVED ARTWORK FOR PRODUCTION.

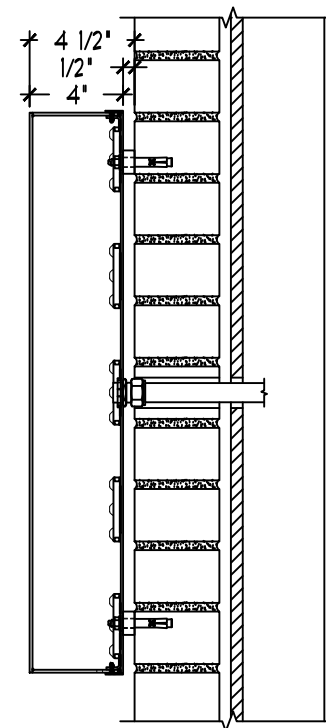
DESIGNATION:
LIF-WBO-24



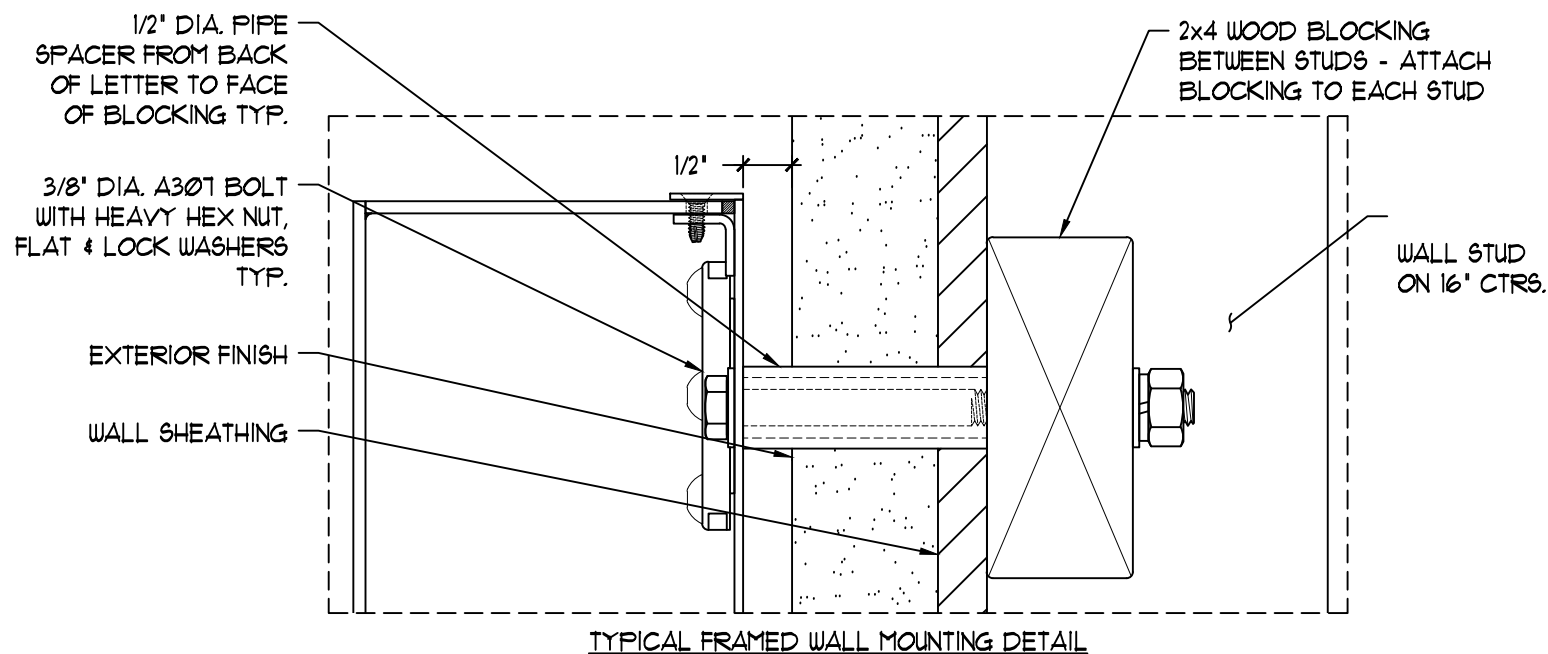
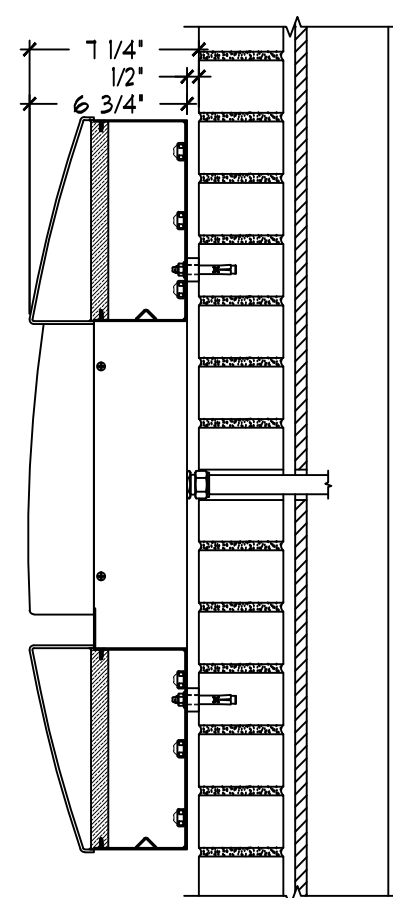
SECTIONS FOR FRAMED WALL INSTALLATION



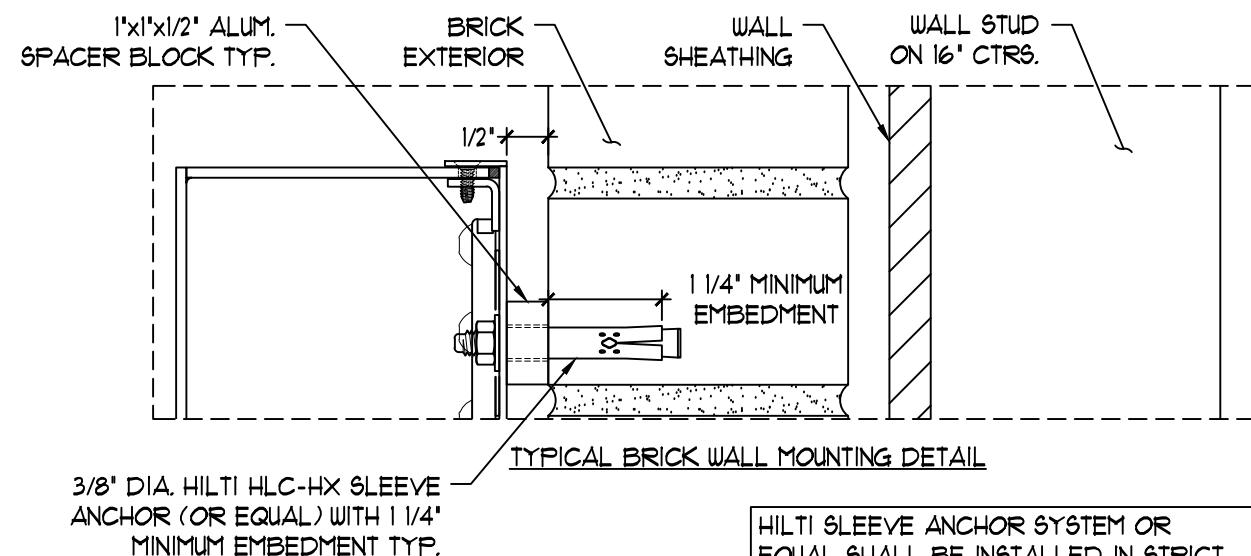
NOTE:
PIPE SPACER MAY BEAR ON WALL SHEATHING ONLY IF THE SHEATHING IS 1/2\"/>



SECTIONS FOR BRICK WALL INSTALLATION



TYPICAL FRAMED WALL MOUNTING DETAIL



TYPICAL BRICK WALL MOUNTING DETAIL

HILTI SLEEVE ANCHOR SYSTEM OR EQUAL SHALL BE INSTALLED IN STRICT ACCORDANCE WITH THE MANUFACTURER'S SPECIFICATIONS & RECOMMENDATIONS

3/28/12	ADDED SWITCH LOCATION ILLUSTRATION TO SHEET 3 OF 3 FOR REMOTE, NON-PARAPET APPLICATION	TRR	IK	8/21/13	CHANGED SEALTITE CONDUIT TO EMT # PARAPET LOCATIONS	ART	IK	3/21/11	CHANGED SLOAN V100 LEDS TO SLOAN PRISM	TRR	IK
2/3/12	ADDED PARAPET WALL DETAILS, REVISED ELECTRICAL ENTRANCE LOCATIONS, CHANGED TO ELECT. TRANS.	TRR	IK	5/11/12	ADDED SWITCH EXCEPTION NOTE	GHK	IK	6/15/16	CHANGED PERFLIGHT LEDS TO SLOAN	TRR	IK
8/02/10	CHANGED LOGO BRIDGE PLATE COLOR TO PAINT TO MATCH BUILDING	TMD	IK	4/5/12	CHANGED ELECT. TRANSFORMERS BACK TO ELECTROMAGNETIC TRANSFORMERS	TRR	IK	9/26/14	CONVERTED TO LED ILLUMINATION FROM NEON	TRR	IK

CHASE

These documents represent prototypical design drawings created specifically for use by J.P. Morgan Chase. Use of this unpublished work for any purpose other than the intended application is strongly discouraged. Disclosure or reproduction of any of the information contained within these documents without the written consent of the owner is strictly prohibited.

SHT.
4
OF
7

BY:
TRR

DATE:
12/30/08

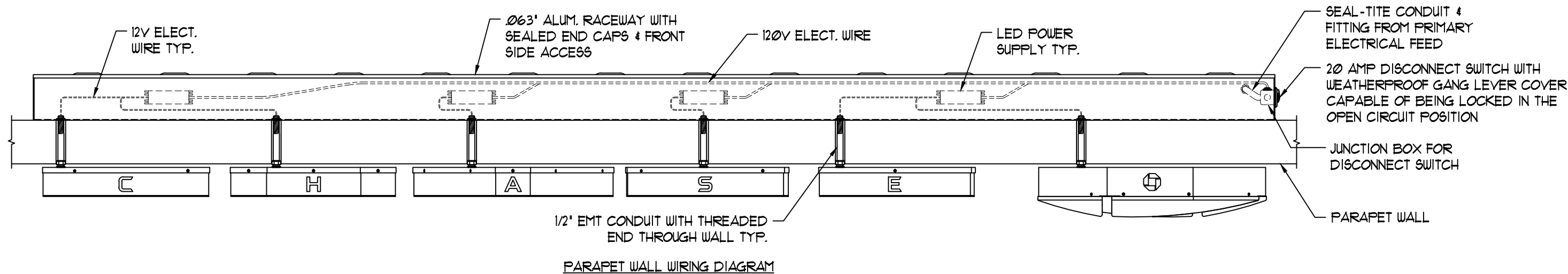
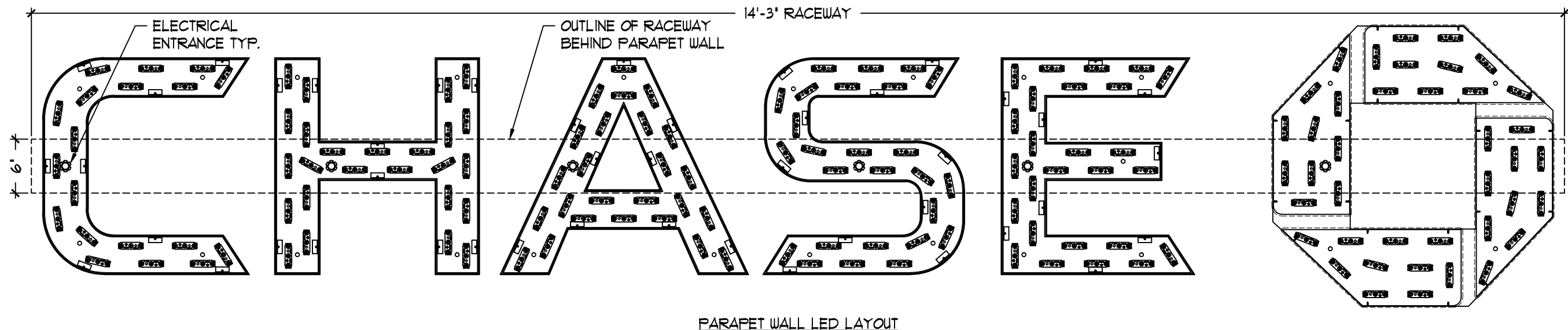
Project No.
08-1218
Drawing No.
B244005

12/31/09	REVISED NEON BRIDGE IN LETTERS	TRR	IK
12/29/09	REVISED NEON FOOTAGE & TRANSFORMERS MOVED MOUNTING LOCATIONS TO AVOID NEON	TRR	IK
5/13/09	CHANGED NEON FROM SINGLE TO DOUBLE STROKE, CHANGED ALUM. RETURN CALL-OUT FROM #800 TO #807, CHANGED ELECTRICAL CONNECTION FROM LIGUID TO SEAL TYPE, ADDED TRANSFORMER & ADDED OR EQUAL TO HILTI CALL-OUT & ADDED PIPE SPACER NOTE	TMD	IK
REV.	DATE	DESCRIPTION	BY:

12/31/09	REVISED NEON BRIDGE IN LETTERS	TRR	IK
12/29/09	REVISED NEON FOOTAGE & TRANSFORMERS MOVED MOUNTING LOCATIONS TO AVOID NEON	TRR	IK
5/13/09	CHANGED NEON FROM SINGLE TO DOUBLE STROKE, CHANGED ALUM. RETURN CALL-OUT FROM #800 TO #807, CHANGED ELECTRICAL CONNECTION FROM LIGUID TO SEAL TYPE, ADDED TRANSFORMER & ADDED OR EQUAL TO HILTI CALL-OUT & ADDED PIPE SPACER NOTE	TMD	IK
REV.	DATE	DESCRIPTION	BY:

GRAPHICS DEPICTED ARE FOR ILLUSTRATIVE PURPOSES ONLY! USE ONLY APPROVED ARTWORK FOR PRODUCTION.

DESIGNATION:
LIF-WBO-24



ELECTRICAL REQUIREMENTS:

LEDs: (121) 7100°K WHITE SLOAN PRISM #101269-71W6J1-MB
(40) BLUE SLOAN PRISM #101269-BL6J1-MB
POWER SUPPLY: (4) SLOAN 60CI 60W #101507-60CI @ 0.1A
TOTAL LOAD: 2.8A @ 120VAC
CIRCUITS: (1) 20 AMP REQUIRED

ALL PRIMARY & SECONDARY
WIRING MUST BE GROUNDED
PER ALL APPLICABLE UL AND
NEC GUIDELINES

DISCONNECT SWITCH EXCEPTION HANDLING:
NOTE - WHERE REQUIRED BY LOCAL JURISDICTION ONLY,
THE DISCONNECT SWITCH SHALL BE PLACED IN THE
UPPER RIGHT CORNER OF THE PARAPET FASCIA,
INSTEAD OF ON THE END OF THE RACEWAY AS SHOWN.
ALL ROOFING MEMBRANE PENETRATIONS SHALL BE
PROPERLY SEALED (PER MANUFACTURER'S
SPECIFICATION) TO PREVENT WATER INTRUSION.

3/28/12	ADDED SWITCH LOCATION ILLUSTRATION TO SHEET 3 OF 3 FOR REMOTE, NON-PARAPET APPLICATION	TRR	IK	8/21/13	CHANGED SEALTITE CONDUIT TO EMT @ PARAPET LOCATIONS	ART	IK	3/21/11	CHANGED SLOAN V100 LEDS TO SLOAN PRISM	TRR	IK
2/3/12	ADDED PARAPET WALL DETAILS, REVISED ELECTRICAL ENTRANCE LOCATIONS, CHANGED TO ELECT. TRANS.	TRR	IK	5/11/12	ADDED SWITCH EXCEPTION NOTE	GHK	IK	6/15/16	CHANGED PERM-LIGHT LEDS TO SLOAN	TRR	IK
8/02/10	CHANGED LOGO BRIDGE PLATE COLOR TO PAINT TO MATCH BUILDING	TMD	IK	4/5/12	CHANGED ELECT. TRANSFORMERS BACK TO ELECTROMAGNETIC TRANSFORMERS	TRR	IK	9/26/14	CONVERTED TO LED ILLUMINATION FROM NEON	TRR	IK

CHASE

These documents represent prototypical design drawings created specifically for use by J.P. Morgan Chase. Use of this unpublished work for any purpose other than the intended application is strongly discouraged. Disclosure or reproduction of any of the information contained within these documents without the written consent of the owner is strictly prohibited.

SHT.
5
OF
7

BY:

TRR

DATE:

12/30/08

Project No.

08-1218

Drawing No.

B244005

REV.

DATE

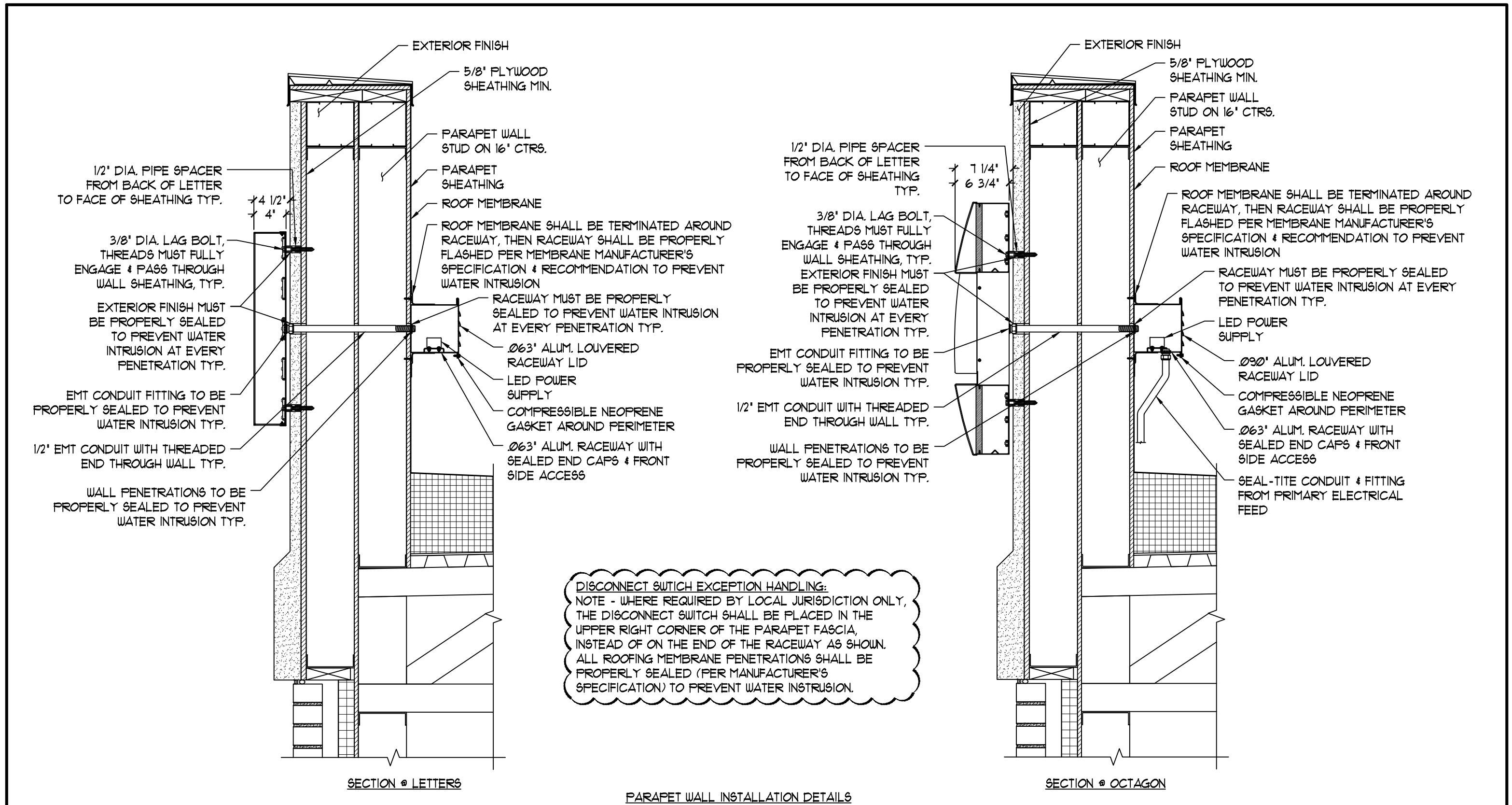
12/31/09

12/29/09

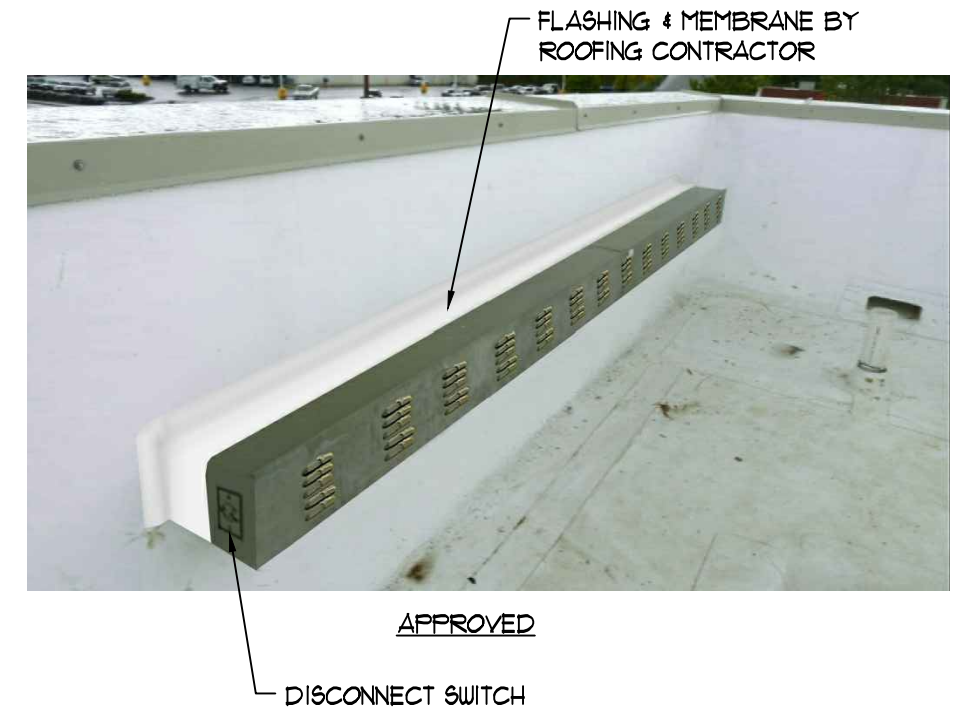
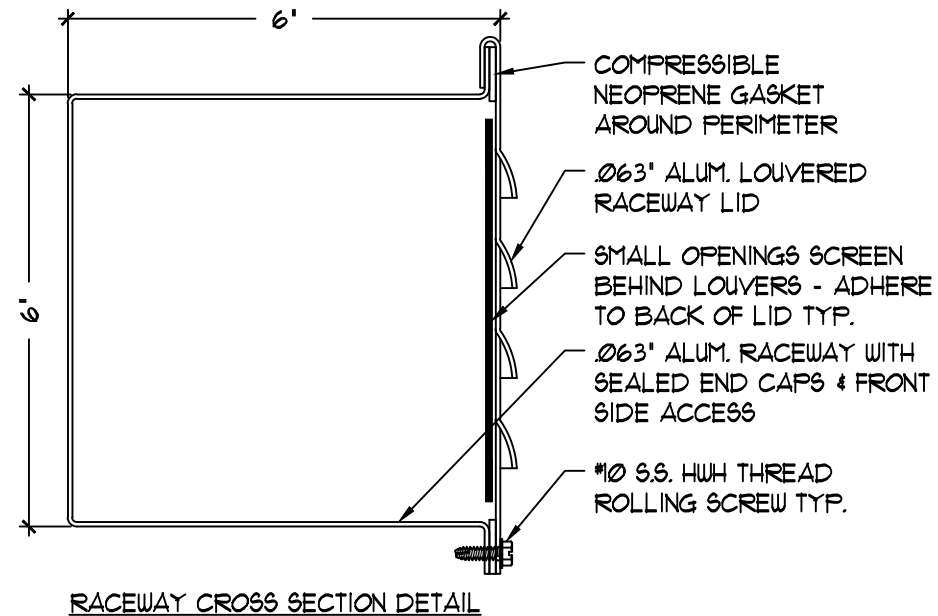
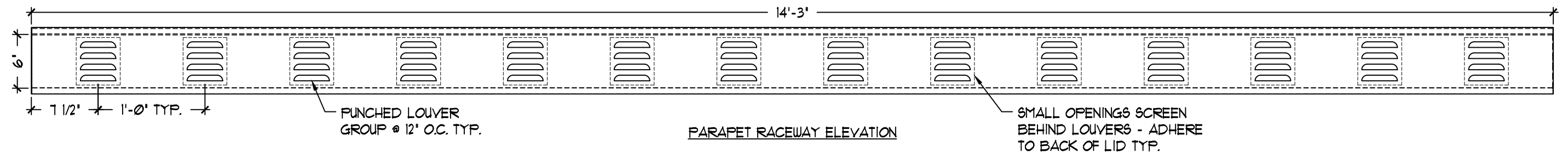
5/13/09

DESCRIPTION

12/31/09| | | | |
| --- | --- | --- | --- |
| 12/29/09 | REVISED NEON BRIDGE IN LETTERS REVISED NEON FOOTAGE & TRANSFORMERS MOVED MOUNTING LOCATIONS TO AVOID NEON | TRR | IK |
| 5/13/09 | CHANGED NEON FROM SINGLE TO DOUBLE STROKE, CHANGED ALUM. RETURN CALL-OUT FROM #800 TO #807, CHANGED ELECTRICAL CONNECTION FROM LUGGED TO SEAL TYPE, ADDED TRANSFORMER & ADDED OR EQUAL TO HILT CALL-OUT & ADDED PIPE SPACER NOTE | TMD | IK |
| DESCRIPTION | BY: APR | GRAPHICS DEPICTED ARE FOR ILLUSTRATIVE PURPOSES ONLY! USE ONLY APPROVED ARTWORK FOR PRODUCTION. | DESIGNATION: LIF-WBO-24 |



3/28/12	ADDED SWITCH LOCATION ILLUSTRATION TO SHEET 3 OF 3 FOR REMOTE, NON-PARAPET APPLICATION	TRR	IK	8/21/13	CHANGED SEALTITE CONDUIT TO EMT @ PARAPET LOCATIONS	ART	IK	3/21/11	CHANGED SLOAN V100 LEDS TO SLOAN PRISM	TRR	IK
2/3/12	ADDED PARAPET WALL DETAILS, REVISED ELECTRICAL ENTRANCE LOCATIONS, CHANGED TO ELECT. TRANS. CHANGED LOGO BRIDGE PLATE COLOR TO	TRR	IK	5/11/12	ADDED SWITCH EXCEPTION NOTE	GHK	IK	6/15/16	CHANGED PER FLIGHT LEDS TO SLOAN	TRR	IK
8/02/10	PAINT TO MATCH BUILDING	TMD	IK	4/5/12	CHANGED ELECT. TRANSFORMERS BACK TO ELECTROMAGNETIC TRANSFORMERS	TRR	IK	9/26/14	CONVERTED TO LED ILLUMINATION FROM NEON	TRR	IK
These documents represent prototypical design drawings created specifically for use by J.P. Morgan Chase. Use of this unpublished work for any purpose other than the intended application is strongly discouraged. Disclosure or reproduction of any of the information contained within these documents without the written consent of the owner is strictly prohibited.											
CHASE		SHT.		BY:		Project No.		12/31/09		TRR	
		6		TRR		08-1218		12/29/09		TRR	
		OF		DATE:		Drawing No.		5/13/09		TMD	
		7		12/30/08		B244005		REV. DATE		BY: APR	
								DESCRIPTION		FOR PRODUCTION.	
										DESIGNATION:	
										LIF-WBO-24	



PREFERRED DISCONNECT SWITCH LOCATION FOR REMOTE, NON-PARAPET INSTALLATION

3/28/12	ADDED SWITCH LOCATION ILLUSTRATION TO SHEET 3 OF 3 FOR REMOTE, NON-PARAPET APPLICATION	TRR	IK	8/21/13	CHANGED SEALTITE CONDUIT TO EMT @ PARAPET LOCATIONS	ART	IK	3/21/11	CHANGED SLOAN V100 LED® TO SLOAN PRISM	TRR	IK
2/3/12	ADDED PARAPET WALL DETAILS, REVISED ELECTRICAL ENTRANCE LOCATIONS, CHANGED TO ELECT. TRANS.	TRR	IK	5/11/12	ADDED SWITCH EXCEPTION NOTE	GHK	IK	6/15/16	CHANGED PER FLIGHT LED® TO SLOAN	TRR	IK
8/02/10	CHANGED LOGO BRIDGE PLATE COLOR TO PAINT TO MATCH BUILDING	TMD	IK	4/5/12	CHANGED ELECT. TRANSFORMERS BACK TO ELECTROMAGNETIC TRANSFORMERS	TRR	IK	9/26/14	CONVERTED TO LED ILLUMINATION FROM NEON	TRR	IK



These documents represent prototypical design drawings created specifically for use by J.P. Morgan Chase. Use of this unpublished work for any purpose other than the intended application is strongly discouraged. Disclosure or reproduction of any of the information contained within these documents without the written consent of the owner is strictly prohibited.

SHT.
1
OF
7

BY:
TRR

DATE:
12/30/08

Project No.
08-1218
Drawing No.
B244005

REV.	DATE	DESCRIPTION
12/31/09	12/29/09	REVISED NEON BRIDGE IN LETTERS REVISED NEON FOOTAGE & TRANSFORMERS MOVED MOUNTING LOCATIONS TO AVOID NEON
5/13/09		CHANGED NEON FROM SINGLE TO DOUBLE STROKE, CHANGED ALUM. RETURN CALL-OUT FROM Ø63" TO Ø63", CHANGED ELECTRICAL CONNECTION FROM LIQUID TO SEAL TYPE, ADDED TRANSFORMER & ADDED OR EQUAL TO HLT CALL-OUT & ADDED PIPE SPACER NOTE

12/31/09
12/29/09
5/13/09

REVISED NEON BRIDGE IN LETTERS
REVISED NEON FOOTAGE & TRANSFORMERS
MOVED MOUNTING LOCATIONS TO AVOID NEON

CHANGED NEON FROM SINGLE TO DOUBLE STROKE, CHANGED ALUM. RETURN
CALL-OUT FROM Ø63" TO Ø63", CHANGED ELECTRICAL CONNECTION
FROM LIQUID TO SEAL TYPE, ADDED TRANSFORMER & ADDED OR
EQUAL TO HLT CALL-OUT & ADDED PIPE SPACER NOTE

TRR IK
TRR IK
TMD IK

GRAPHICS DEPICTED ARE FOR ILLUSTRATIVE PURPOSES ONLY! USE ONLY APPROVED ARTWORK FOR PRODUCTION.

DESIGNATION:
LIF-WBO-24