



New Build Program



REVISION NOTES:
Rev 1 - 02/02/22 TI - E01 shown on site plan, relocated E05, new elevations
Rev 2 - 05/17/22 TI - Updated floor plan

Loc#: 810702 (Pryor Rd and Lowenstein Dr) OVP#: C60025810702

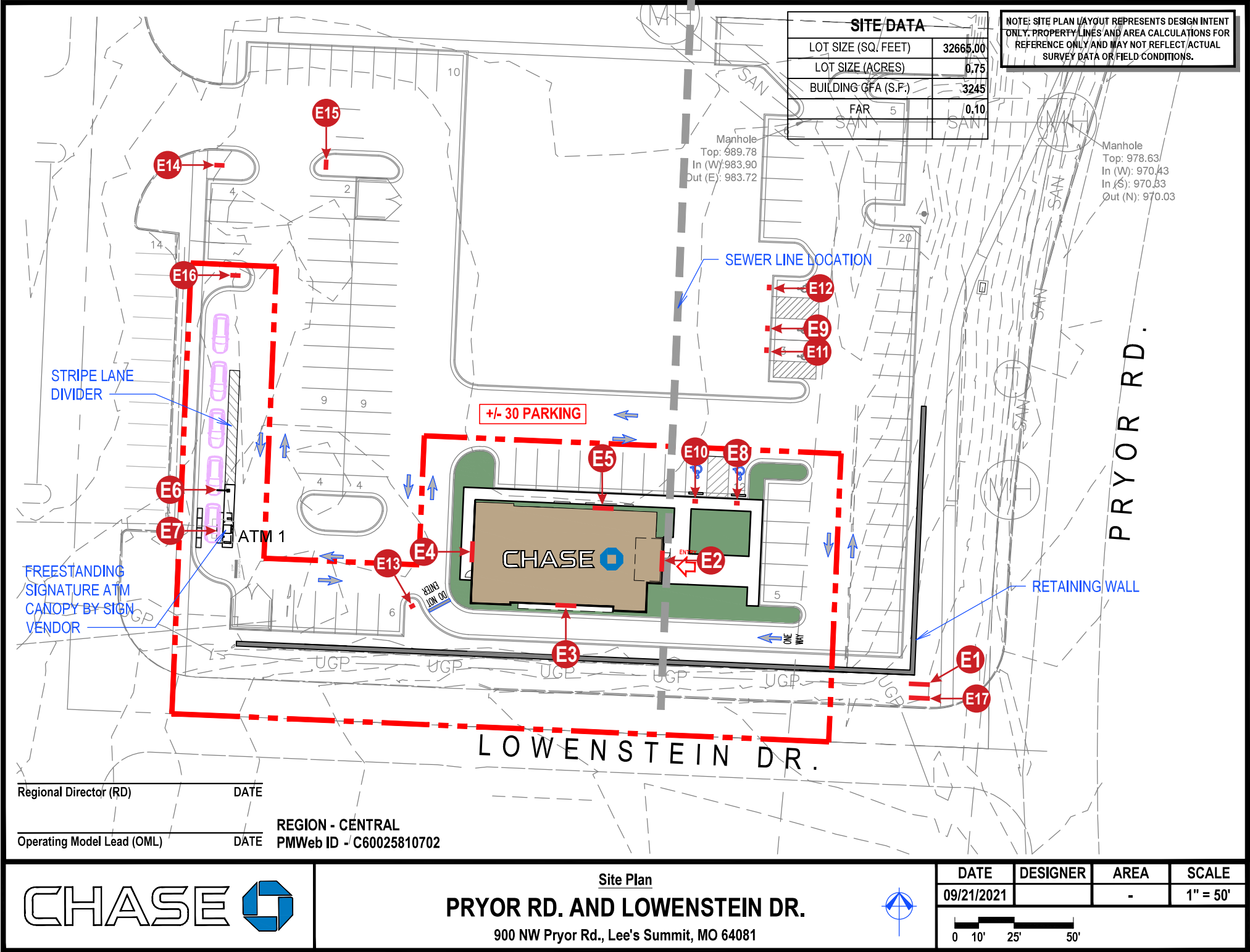
900 NW Pryor Rd.
Lee's Summit, MO 64081



SITE PLAN

SCOPE OF WORK			
E1	MT-N	Face Replacement	13.4 Sq.Ft.
E2	LIF-WBO-24	Illuminated Channel Letters	36.9 Sq.Ft.
E3	LIF-WBO-24	Illuminated Channel Letters	36.9 Sq.Ft.
E4	LIF-WBO-24	Illuminated Channel Letters	36.9 Sq.Ft.
E5	LIF-WBO-24	Illuminated Channel Letters	36.9 Sq.Ft.
E6	HB-U	Headache Bar	
E7	CAN-ATM-SIG-OCT	Signature ATM Canopy	
E8	TC-P-ADA-V-RE	Regulatory Sign	2.0 Sq.Ft.
E9	TC-P-ADA-V-RE	Regulatory Sign	2.0 Sq.Ft.
E10	TC-P-ADA-RE	Regulatory Sign	1.5 Sq.Ft.
E11	TC-P-ADA-RE	Regulatory Sign	1.5 Sq.Ft.
E12	TC-P-ADA-RE	Regulatory Sign	1.5 Sq.Ft.
E13	TC-P-DNE	"DO NOT ENTER" Regulatory	6.25 Sq.Ft.
E14	D5-RE	Directional Sign	5.7 Sq.Ft.
E15	D5-RE	Directional Sign	5.7 Sq.Ft.
E16	D5-RE	Directional Sign	5.7 Sq.Ft.
E17	4 x 8	Coming Soon Sign	

EXTERIOR	TOTAL AREA (Sq.Ft.)	192.85
----------	---------------------	--------



Stratus™

stratusunlimited.com

8959 Tyler Boulevard
Mentor, Ohio 44060
888.503.1569

CLIENT:

CHASE

ADDRESS:

900 NW Pryor Rd.
Lee's Summit, MO
64081

PAGE NO.:

3

ORDER NUMBER:

1156863

SITE NUMBER:

810702

ELECTRONIC FILE NAME:

K:\ACCOUNTS\CI\Chase Signature\Locations\2022\MO\810702_Lee's Summit\810702_Lee's Summit_R2.cdr

PROJECT NUMBER:

3456

PROJECT MANAGER:

ROB WONG

Rev #	Req #	Date/Artist	Description	Rev #	Req #	Date/Artist	Description
Original	366867	01/31/22 TI					
Rev 1	367624	02/02/22 TI	E1 placed on site plan				
Rev 2	383151	05/17/22 TI					

PRINTS ARE THE EXCLUSIVE PROPERTY OF STRATUS. THIS MATERIAL SHALL NOT BE USED, DUPLICATED, OR OTHERWISE REPRODUCED WITHOUT THE PRIOR WRITTEN CONSENT OF STRATUS.

E1

FACE REPLACEMENT

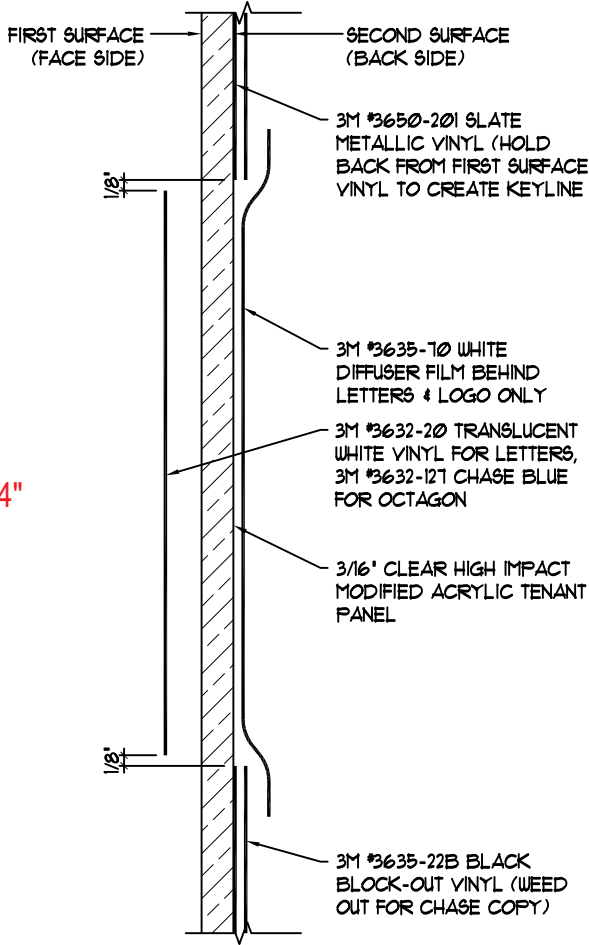
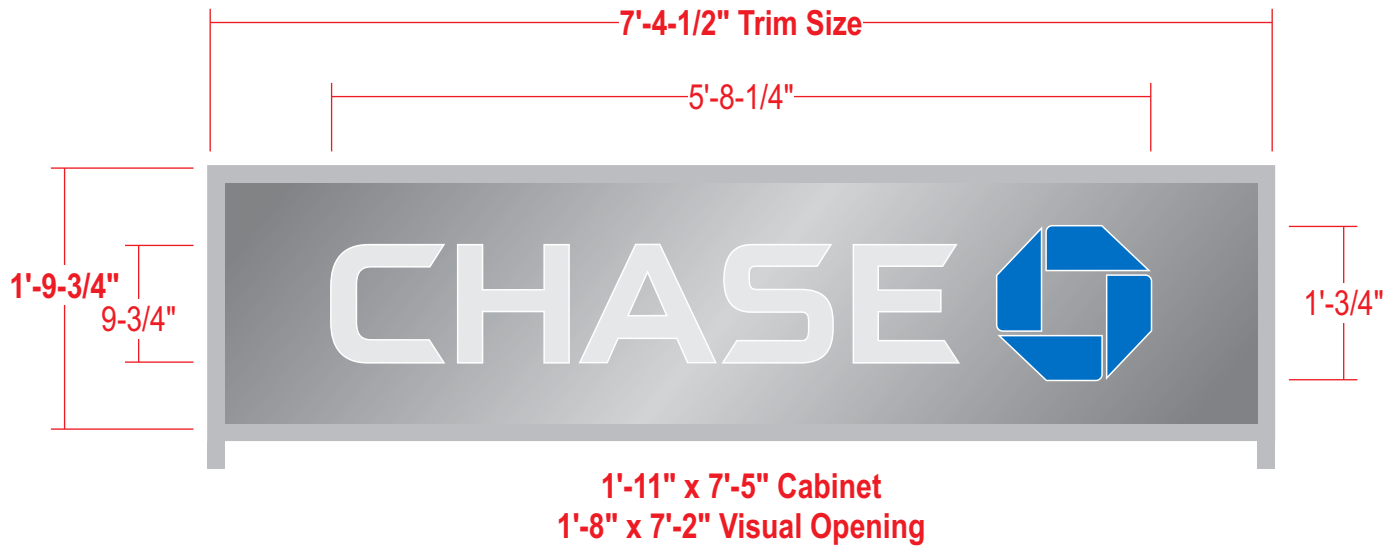
Scale: 3/4"=1'-0"

MT-N
13.4 square feet

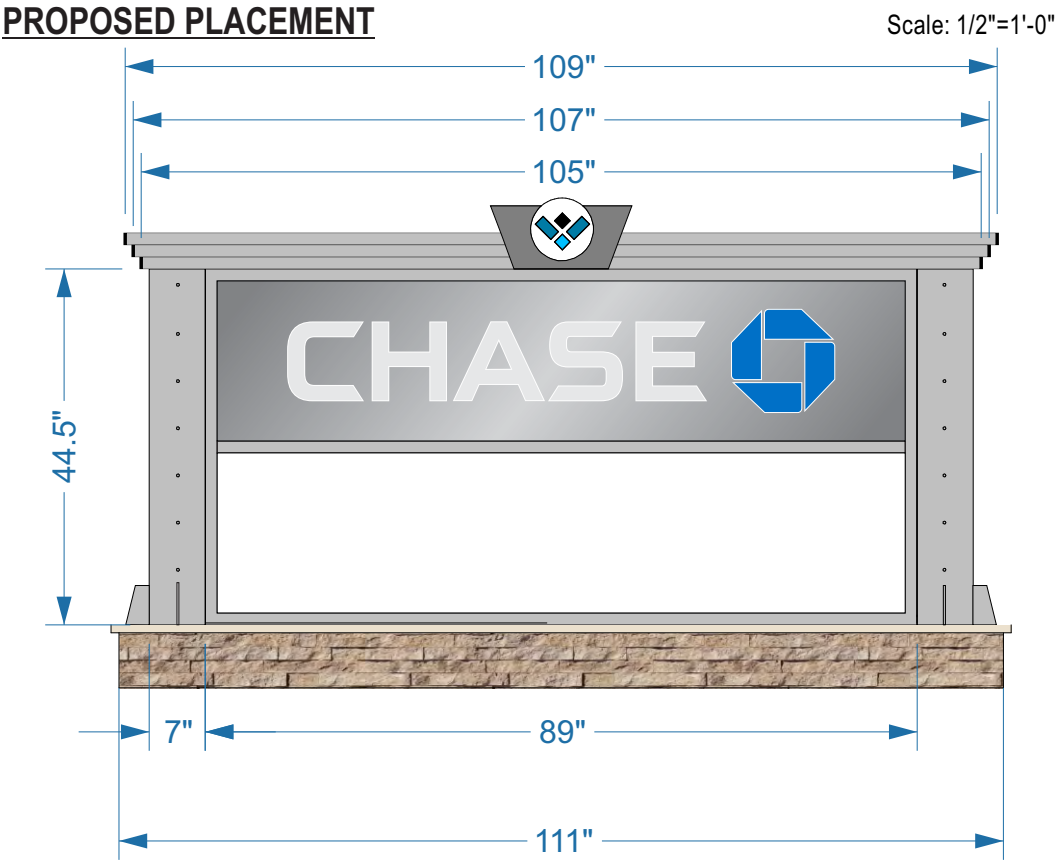


refer to
PRODUCTION SHOP DRAWING
B244100
for manufacturing details

QUANTITY: (2) Two required



VINYL APPLICATION DETAIL



DRC Page 5

StratusTM
stratusunlimited.com
8959 Tyler Boulevard
Mentor, Ohio 44060
888.503.1569

CLIENT: **CHASE**
ADDRESS: 900 NW Pryor Rd.
Lee's Summit, MO 64081
PAGE NO.: **5**

ORDER NUMBER: 1156863
PROJECT NUMBER: 3456
SITE NUMBER: 810702
PROJECT MANAGER: ROB WONG
ELECTRONIC FILE NAME: K:\ACCOUNTS\CI\Chase Signature\Locations\2022\MO\810702_Lee's Summit\810702_Lee's Summit_R2.cdr

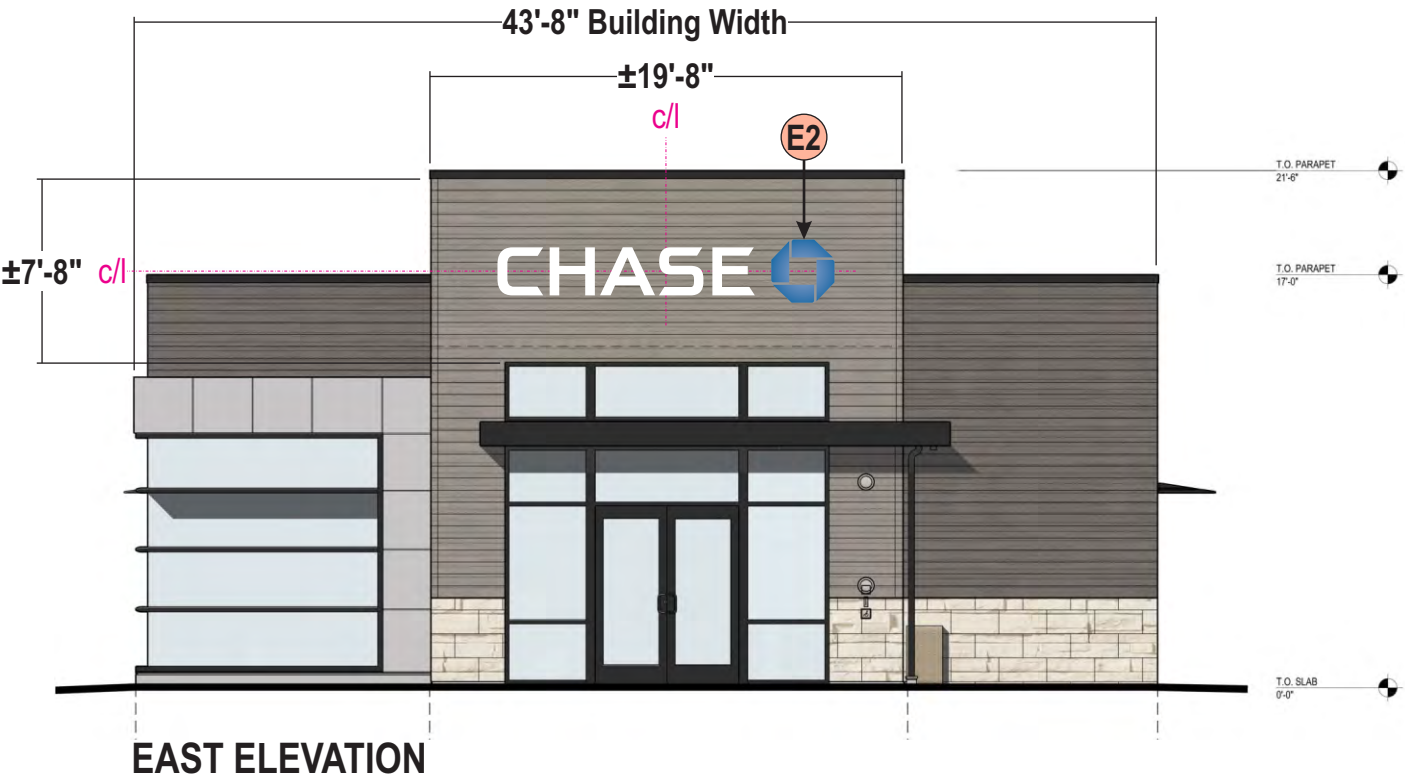
Rev #	Req #	Date/Artist	Description	Rev #	Req #	Date/Artist	Description
Original	366867	01/31/22 TI					
Rev 1	367624	02/02/22 TI					
Rev 2	383151	05/17/22 TI					

PRINTS ARE THE EXCLUSIVE PROPERTY OF STRATUS. THIS MATERIAL SHALL NOT BE USED, DUPLICATED, OR OTHERWISE REPRODUCED WITHOUT THE PRIOR WRITTEN CONSENT OF STRATUS.

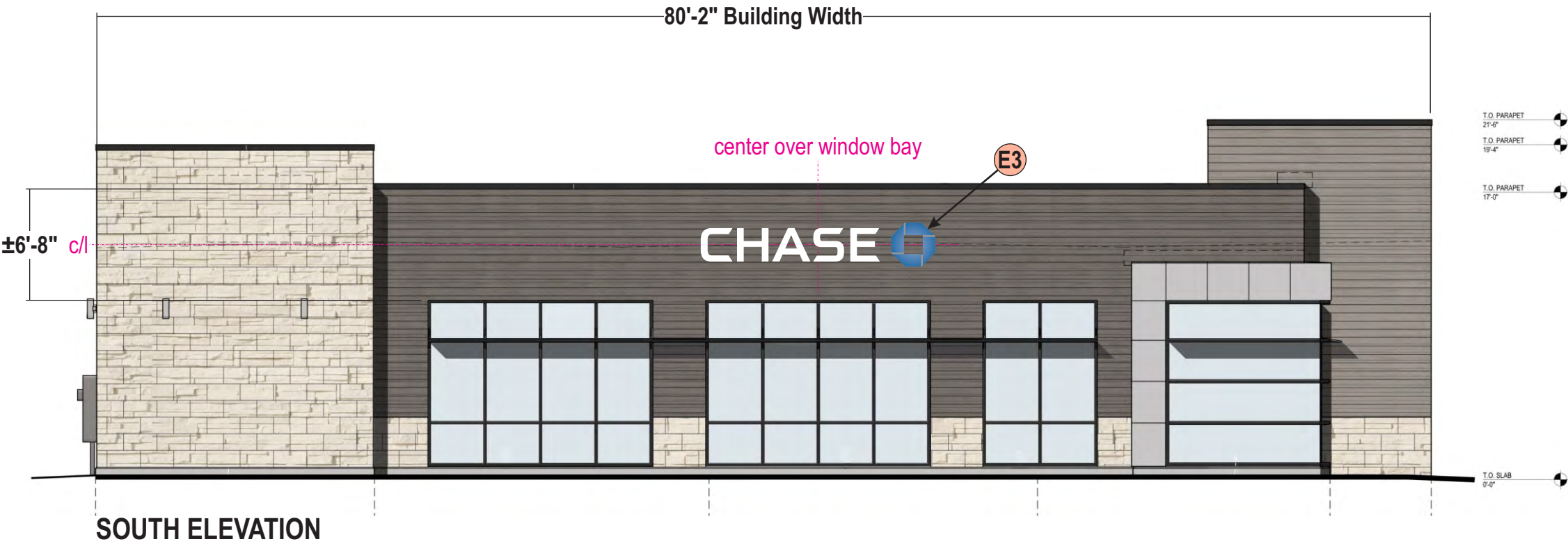


BUILDING ELEVATIONS

Scale: 1/8"=1'-0"



EXTERIOR FINISH MATERIALS		
ST-4	MANUFACTURED THIN STONE VENEER	
	MANUFACTURER	CORONADO STONE PRODUCTS
	PRODUCT	CHISELED LIMESTONE
	COLOR	CREAM
	SIZE	24" WIDE x 12" HIGH x 1" THICK
	GROUT	1/4" NOMINAL JOINTS WITH FULL SMOOTH TOOLED COLOR-MATCHED PORTLAND CEMENT GROUT
	NOTES	RUNNING BOND MANUFACTURED THIN STONE FIELD-CUT TO MAX. LENGTHS POSSIBLE WITH BUTTED AND LAPPED INSIDE CORNERS AND MANUFACTURER'S FABRICATED RETURN CORNER PIECES. MITERED CORNERS ARE NOT ACCEPTABLE. PLACE CONTROL JOINTS AS RECOMMENDED BY THE MANUFACTURER. REFER TO WALL SECTIONS AND DETAILS
FC-1	FIBER CEMENT PANEL- DARK	
	MANUFACTURER	NICHIHA FIBER CEMENT
	PRODUCT	VINTAGEWOOD AWP 1818 (AVAILABLE AS AWP 3030 FOR NON-PROTOTYPICAL PROJECTS)
	COLOR	BARK
	SIZE	18" NOMINAL x 72" NOMINAL AND 120" NOMINAL
	NOTES	INCLUDE 3.5" MANUFACTURED CORNERS AND MANUFACTURER'S "ESSENTIAL" FLASHING SYSTEM.
	FIBER CEMENT PANEL- LIGHT	
FC-2	MANUFACTURER	NICHIHA FIBER CEMENT
	PRODUCT	VINTAGEWOOD AWP 1818 (AVAILABLE AS AWP 3030 FOR NON-PROTOTYPICAL PROJECTS)
	COLOR	ASH
	SIZE	18" NOMINAL x 72" NOMINAL AND 120" NOMINAL
	NOTES	INCLUDE 3.5" MANUFACTURED CORNERS AND MANUFACTURER'S "ESSENTIAL" FLASHING SYSTEM.



Stratus™

stratusunlimited.com

8959 Tyler Boulevard
Mentor, Ohio 44060
888.503.1569

CLIENT:

CHASE

ADDRESS:

900 NW Pryor Rd.
Lee's Summit, MO 64081

PAGE NO.:

6

ORDER NUMBER:

1156863

SITE NUMBER:

810702

ELECTRONIC FILE NAME:

K:\ACCOUNTS\IC\Chase Signature\Locations\2022\MO\810702_Lee's Summit\810702_Lee's Summit_R2.cdr

PROJECT NUMBER:

3456

PROJECT MANAGER:

ROB WONG

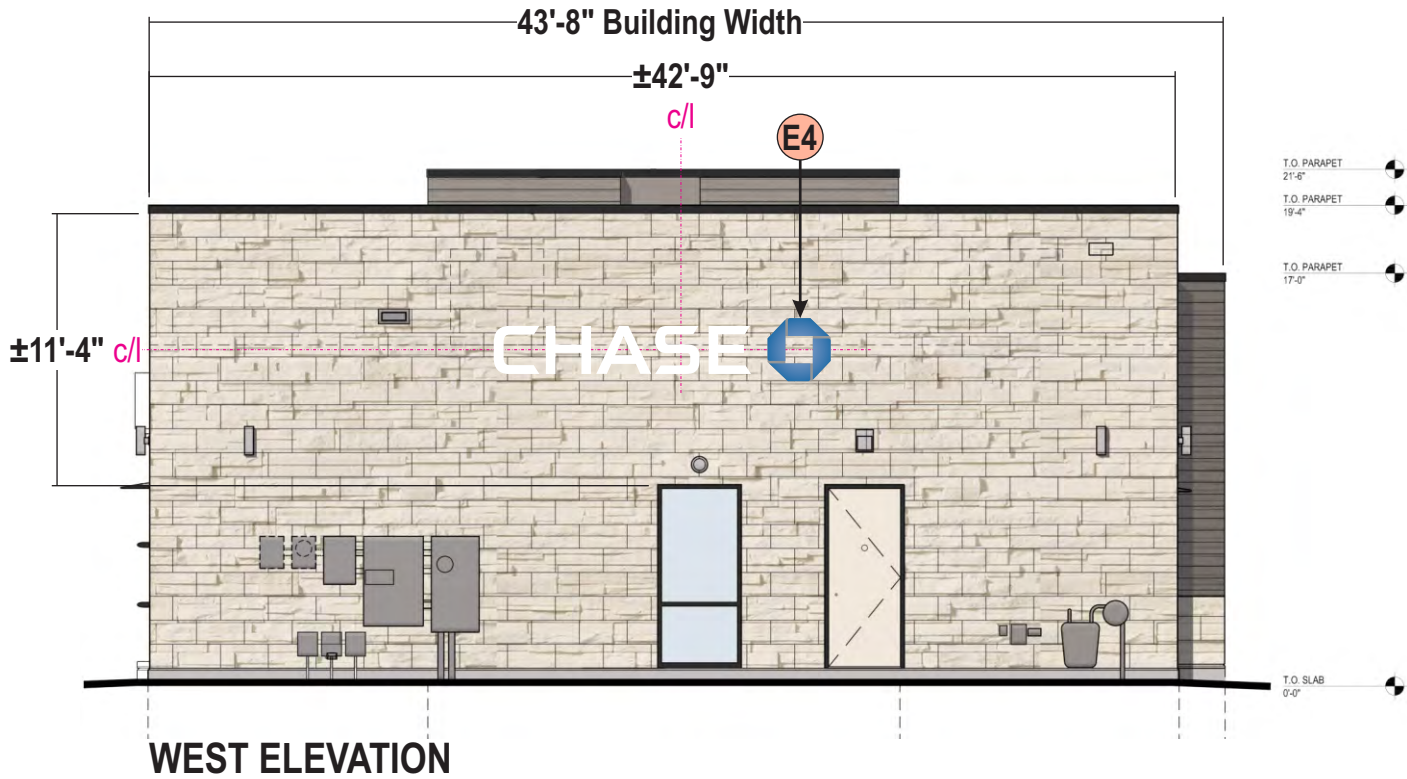
Rev #	Req #	Date/Artist	Description	Rev #	Req #	Date/Artist	Description
Original	366867	01/31/22 TI					
Rev 1	367624	02/02/22 TI	Updated elevations				
Rev 2	383151	05/17/22 TI					

PRINTS ARE THE EXCLUSIVE PROPERTY OF STRATUS. THIS MATERIAL SHALL NOT BE USED, DUPLICATED, OR OTHERWISE REPRODUCED WITHOUT THE PRIOR WRITTEN CONSENT OF STRATUS.

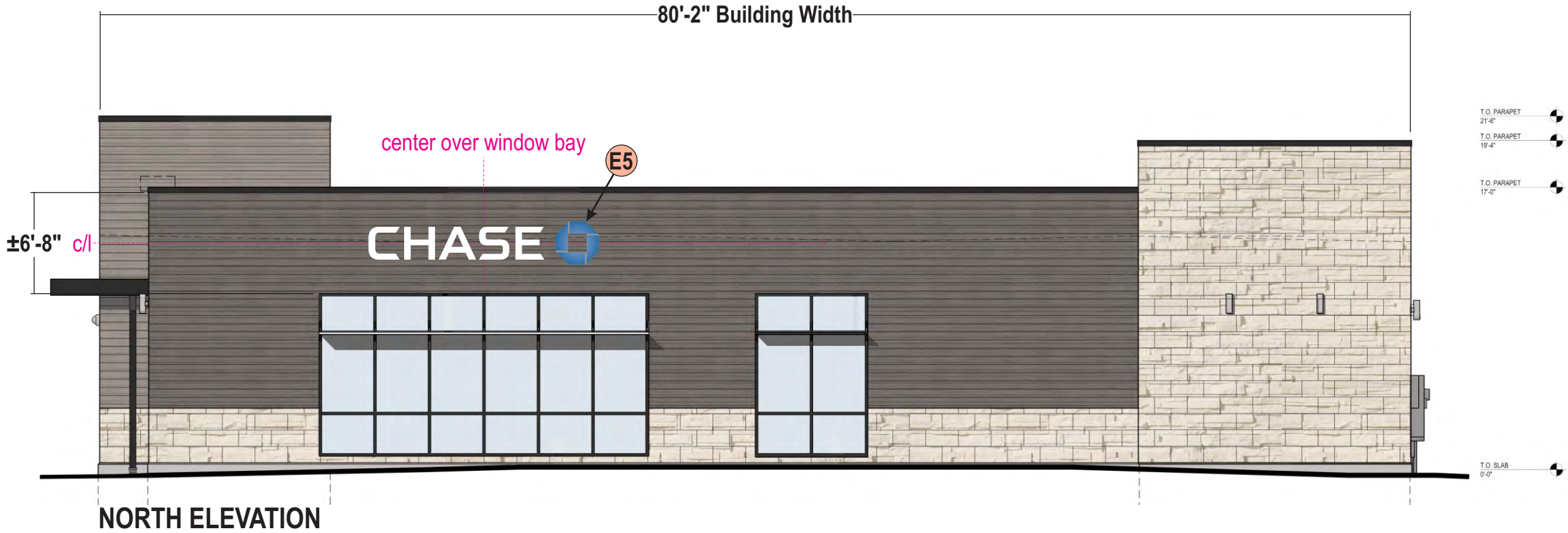


BUILDING ELEVATIONS

Scale: 1/8"=1'-0"



EXTERIOR FINISH MATERIALS		
ST-4	MANUFACTURED THIN STONE VENEER	
	MANUFACTURER	CORONADO STONE PRODUCTS
	PRODUCT	CHISELED LIMESTONE
	COLOR	CREAM
	SIZE	24" WIDE x 12" HIGH x 1" THICK
ST-4	GROUT	1/4" NOMINAL JOINTS WITH FULL SMOOTH TOOLED COLOR-MATCHED PORTLAND CEMENT GROUT
	NOTES	RUNNING BOND MANUFACTURED THIN STONE FIELD-CUT TO MAX. LENGTHS POSSIBLE WITH BUTTED AND LAPPED INSIDE CORNERS AND MANUFACTURER'S FABRICATED RETURN CORNER PIECES. MITERED CORNERS ARE NOT ACCEPTABLE. PLACE CONTROL JOINTS AS RECOMMENDED BY THE MANUFACTURER. REFER TO WALL SECTIONS AND DETAILS
FC-1	FIBER CEMENT PANEL- DARK	
	MANUFACTURER	NICHIHA FIBER CEMENT
	PRODUCT	VINTAGEWOOD AWP 1818 (AVAILABLE AS AWP 3030 FOR NON-PROTOTYPICAL PROJECTS)
	COLOR	BARK
	SIZE	18" NOMINAL x 72" NOMINAL AND 120" NOMINAL
FC-1	NOTES	INCLUDE 3.5" MANUFACTURED CORNERS AND MANUFACTURER'S "ESSENTIAL" FLASHING SYSTEM.
FC-2	FIBER CEMENT PANEL- LIGHT	
	MANUFACTURER	NICHIHA FIBER CEMENT
	PRODUCT	VINTAGEWOOD AWP 1818 (AVAILABLE AS AWP 3030 FOR NON-PROTOTYPICAL PROJECTS)
	COLOR	ASH
	SIZE	18" NOMINAL x 72" NOMINAL AND 120" NOMINAL
FC-2	NOTES	INCLUDE 3.5" MANUFACTURED CORNERS AND MANUFACTURER'S "ESSENTIAL" FLASHING SYSTEM.



Stratus™

stratusunlimited.com

8959 Tyler Boulevard
Mentor, Ohio 44060

888.503.1569

CLIENT:

CHASE

ADDRESS:

900 NW Pryor Rd.
Lee's Summit, MO
64081

PAGE NO.:

7

ORDER NUMBER:

1156863

SITE NUMBER:

810702

ELECTRONIC FILE NAME:

K:\ACCOUNTS\CI\Chase Signature\Locations\2022\MO\810702_Lee's Summit\810702_Lee's Summit_R2.cdr

PROJECT NUMBER:

3456

PROJECT MANAGER:

ROB WONG

Rev #	Req #	Date/Artist	Description	Rev #	Req #	Date/Artist	Description
Original	366867	01/31/22 TI					
Rev 1	367624	02/02/22 TI	Updated elevations, relocated E5				
Rev 2	383151	05/17/22 TI					

ILLUMINATED CHANNEL LETTERS

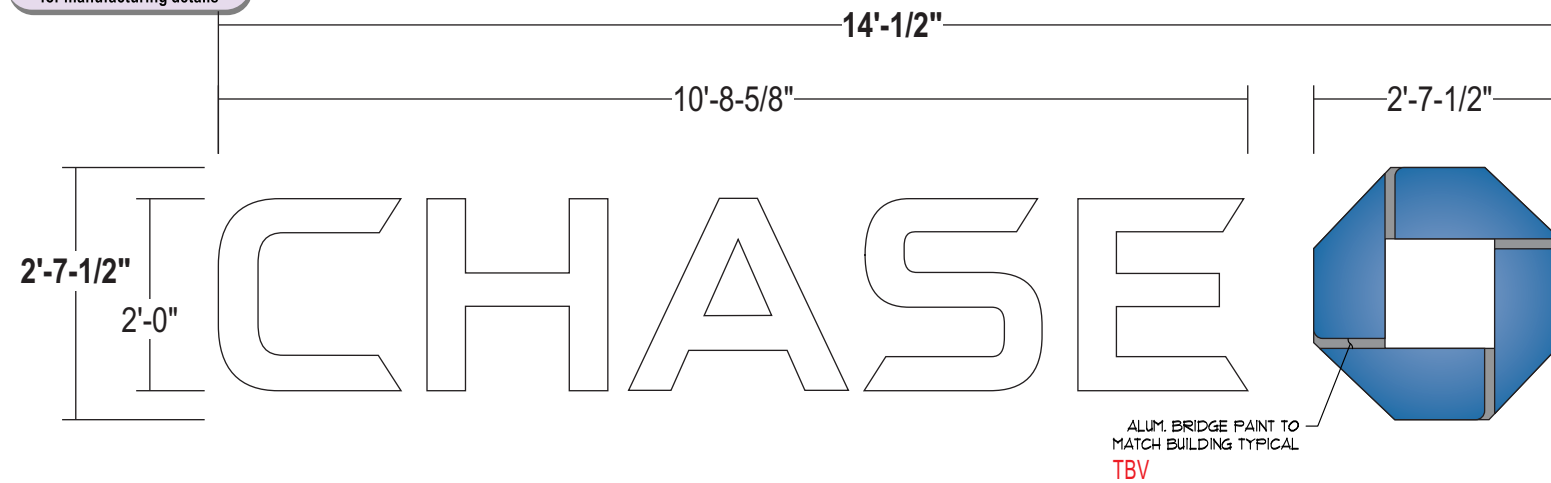
Scale: 1/2"=1'-0"

refer to
PRODUCTION SHOP DRAWING
B244005
for manufacturing details

LIF-WBO-24

36.9 square feet

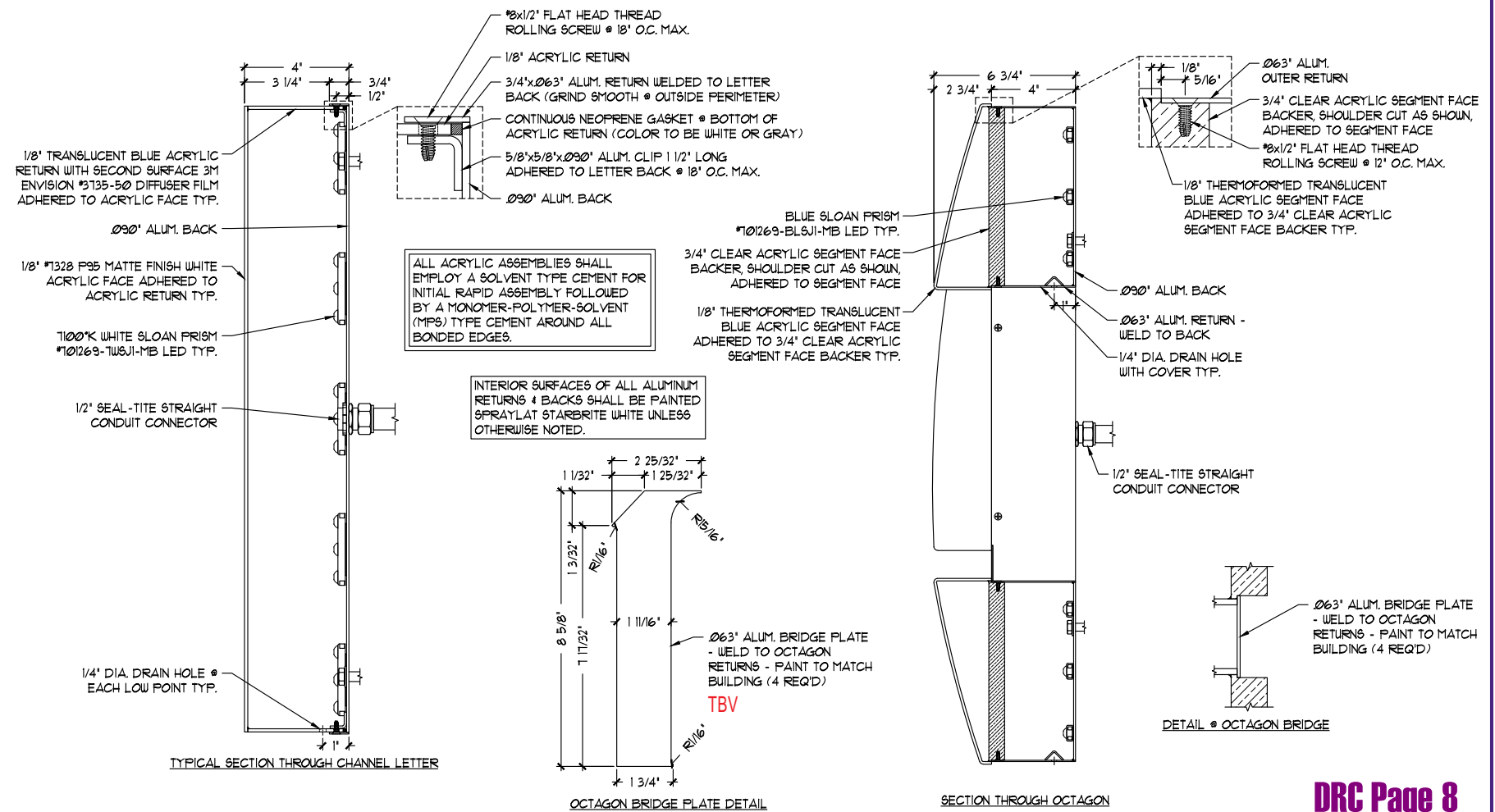
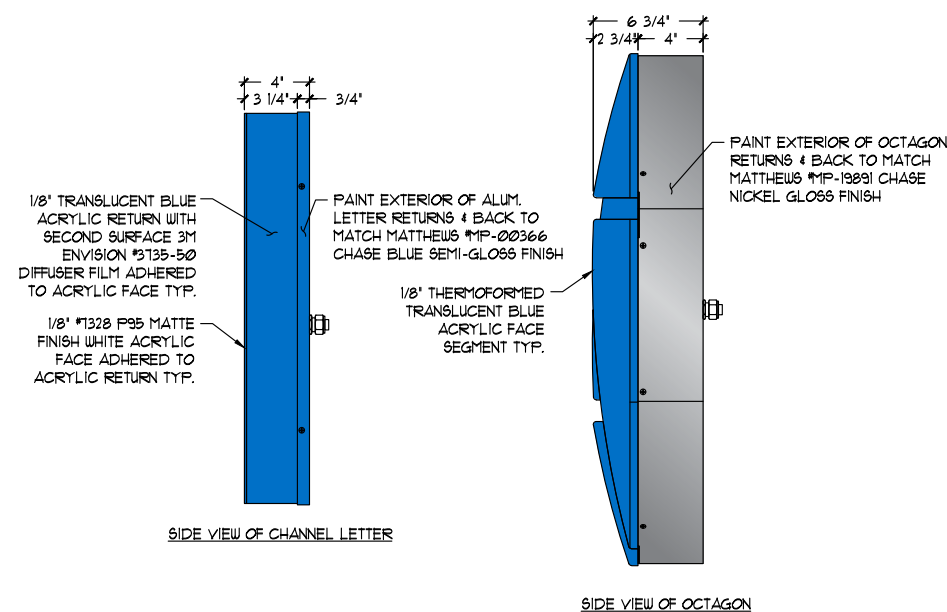
Simulated night time view



WALL MATERIAL: Fiber cement for Sign 2, 3 & 5, Chiseled limestone for Sign 4

INSTALL: Thru bolted using all thread into blocking as required
12" standard length of threaded rod will be supplied unless otherwise noted
3/8" threaded rod into blocking or Stratus approved equivalent

QUANTITY: (4) Four required



DRC Page 8

Stratus™

stratusunlimited.com

8959 Tyler Boulevard
Mentor, Ohio 44060

888.503.1569

CLIENT:



ADDRESS:

900 NW Pryor Rd.
Lee's Summit, MO
64081

PAGE NO.:

8

ORDER NUMBER:

1156863

SITE NUMBER:

810702

ELECTRONIC FILE NAME:

K:\ACCOUNTS\C\Chase Signature\Locations\2022\MO\810702_Lee's Summit\810702 Lee's Summit R2.cdr

PROJECT NUMBER:

3456

PROJECT MANAGER:

ROB WONG

Rev #	Req #	Date/Artist	Description	Rev #	Req #	Date/Artist	Description
Original	366867	01/31/22 TI					
Rev 1	367624	02/02/22 TI					
Rev 2	383151	05/17/22 TI					

PRINTS ARE THE EXCLUSIVE PROPERTY OF STRATUS. THIS MATERIAL SHALL NOT BE USED, DUPLICATED, OR OTHERWISE REPRODUCED WITHOUT THE PRIOR WRITTEN CONSENT OF STRATUS.

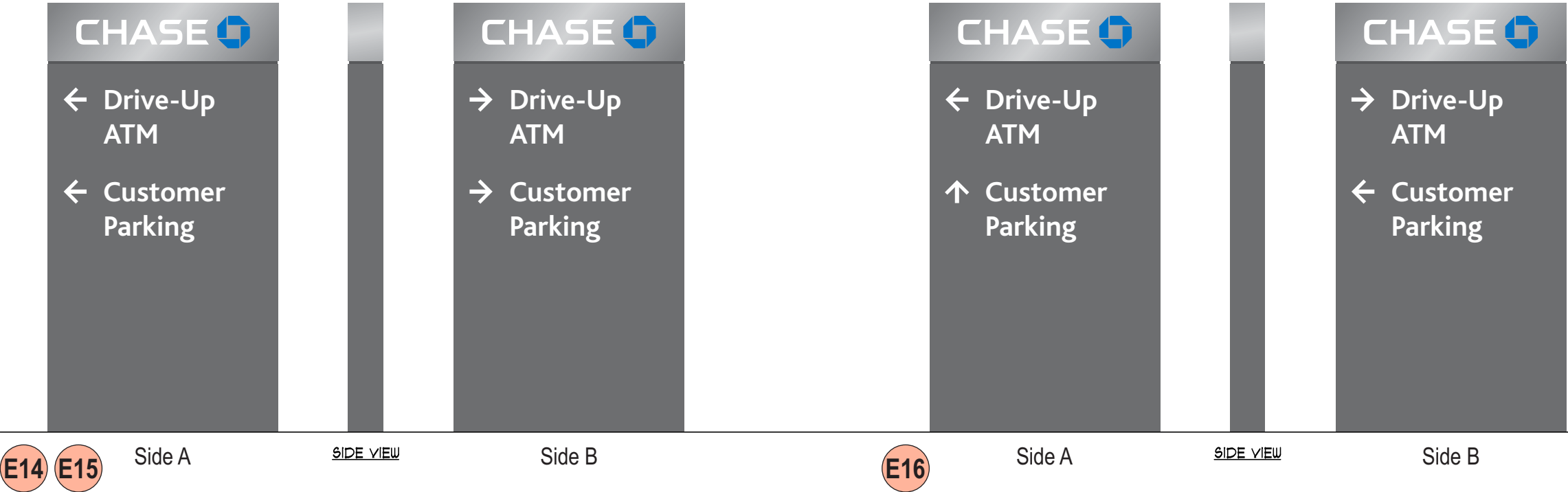


DIRECTIONAL SIGNS

Scale: 1"=1'-0"

D5-RE

5.7 square feet



E14 E15

Side A

SIDE VIEW

Side B

E16

Side A

SIDE VIEW

Side B

QUANTITY: (2) Two D/F directionals required

QUANTITY: (1) One D/F directional required

Stratus™

stratusunlimited.com

8959 Tyler Boulevard
Mentor, Ohio 44060
888.503.1569

CLIENT:
CHASE

ADDRESS:
900 NW Pryor Rd.
Lee's Summit, MO 64081

PAGE NO.:
14

ORDER NUMBER:
1156863

SITE NUMBER:
810702

ELECTRONIC FILE NAME:
K:\ACCOUNTS\CI\Chase Signature\Locations\2022\MO\810702_Lee's Summit\810702_Lee's Summit_R2.cdr

PROJECT NUMBER:
3456

PROJECT MANAGER:
ROB WONG

Rev #	Req #	Date/Artist	Description	Rev #	Req #	Date/Artist	Description
Original	366867	01/31/22 TI					
Rev 1	367624	02/02/22 TI					
Rev 2	383151	05/17/22 TI					

E14
E15
E16

D/F DIRECTIONAL SIGN

Scale: 1-1/2"=1'-0"

D5-RE

5.7 square feet

refer to
PRODUCTION SHOP DRAWING
B244653
for manufacturing details

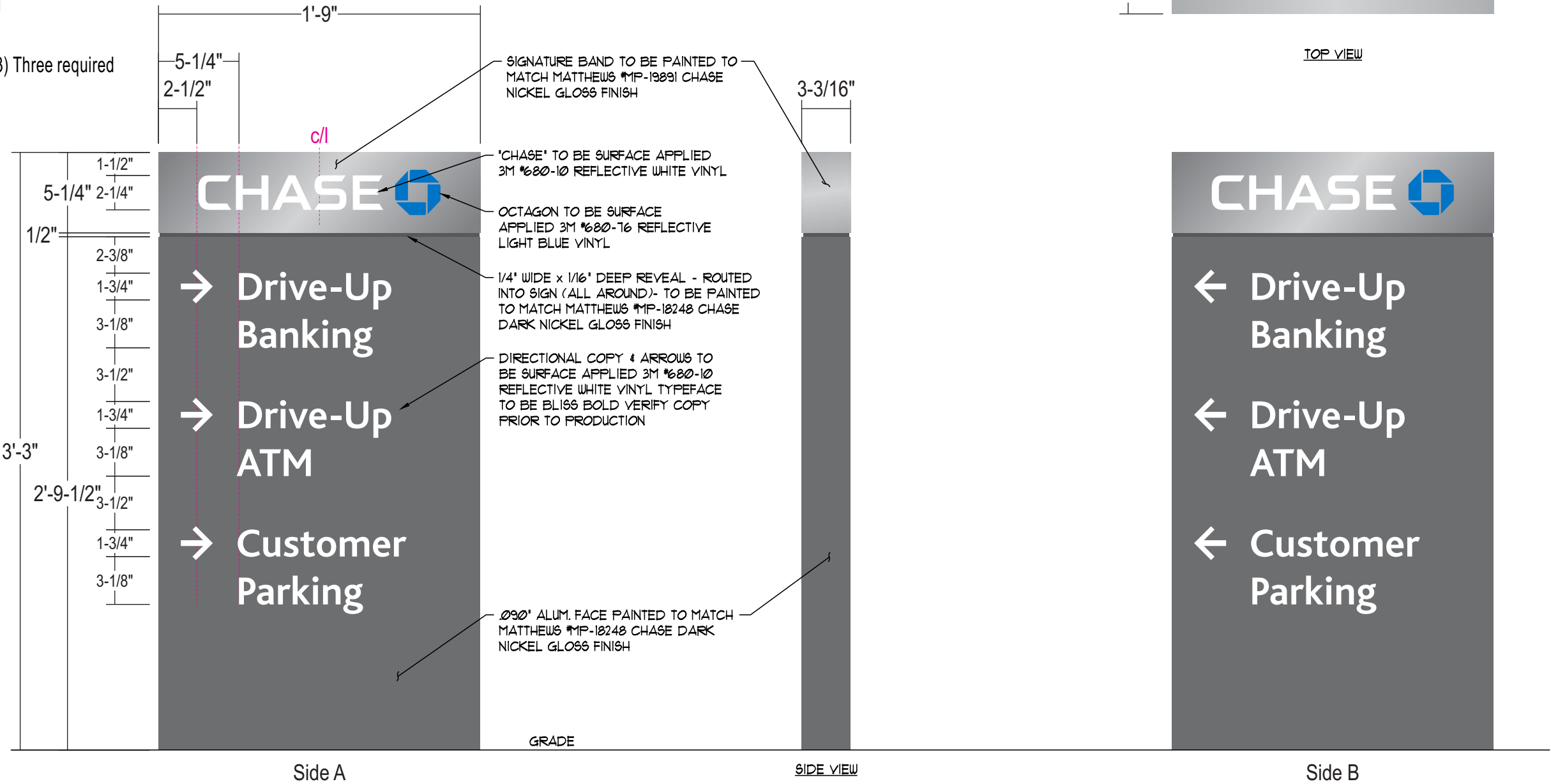
QUANTITY: (3) Three required

TYPICAL LAYOUT SHOWN. SEE PREVIOUS PAGE FOR ACTUAL COPY.

TOP OF SIGN TO BE PAINTED TO MATCH
MATTHEWS #MP-19891 CHASE NICKEL
GLOSS FINISH

3-3/16"

TOP VIEW





stratusunlimited.com

8959 Tyler Boulevard
Mentor, Ohio 44060

888.503.1569

CLIENT:



ADDRESS:

900 NW Pryor Rd.
Lee's Summit, MO
64081

PAGE NO.:

15

ORDER NUMBER:

1156863

SITE NUMBER:

810702

ELECTRONIC FILE NAME:

K:\ACCOUNTS\CI\Chase Signature\Locations\2022\MO\810702_Lee's Summit\810702_Lee's Summit_R2.cdr

PROJECT NUMBER:

3456

PROJECT MANAGER:

ROB WONG

Rev #	Req #	Date/Artist	Description	Rev #	Req #	Date/Artist	Description
Original	366867	01/31/22 TI					
Rev 1	367624	02/02/22 TI					
Rev 2	383151	05/17/22 TI					