

ACCOUNT:
3037

FILE:

REPRESENTATIVE:
Eric Journagan

ADDRESS:

ORIGINAL DRAWING DATE: 06.23.22

DRAWING NUMBER:
1 of 1

SCALE:
NTS

REV. #1 BY:

REV. DATE

REVISION NOTES:

REV. #2 BY:

REV. DATE

REVISION NOTES:

REV. #3 BY:

REV. DATE

REVISION NOTES:

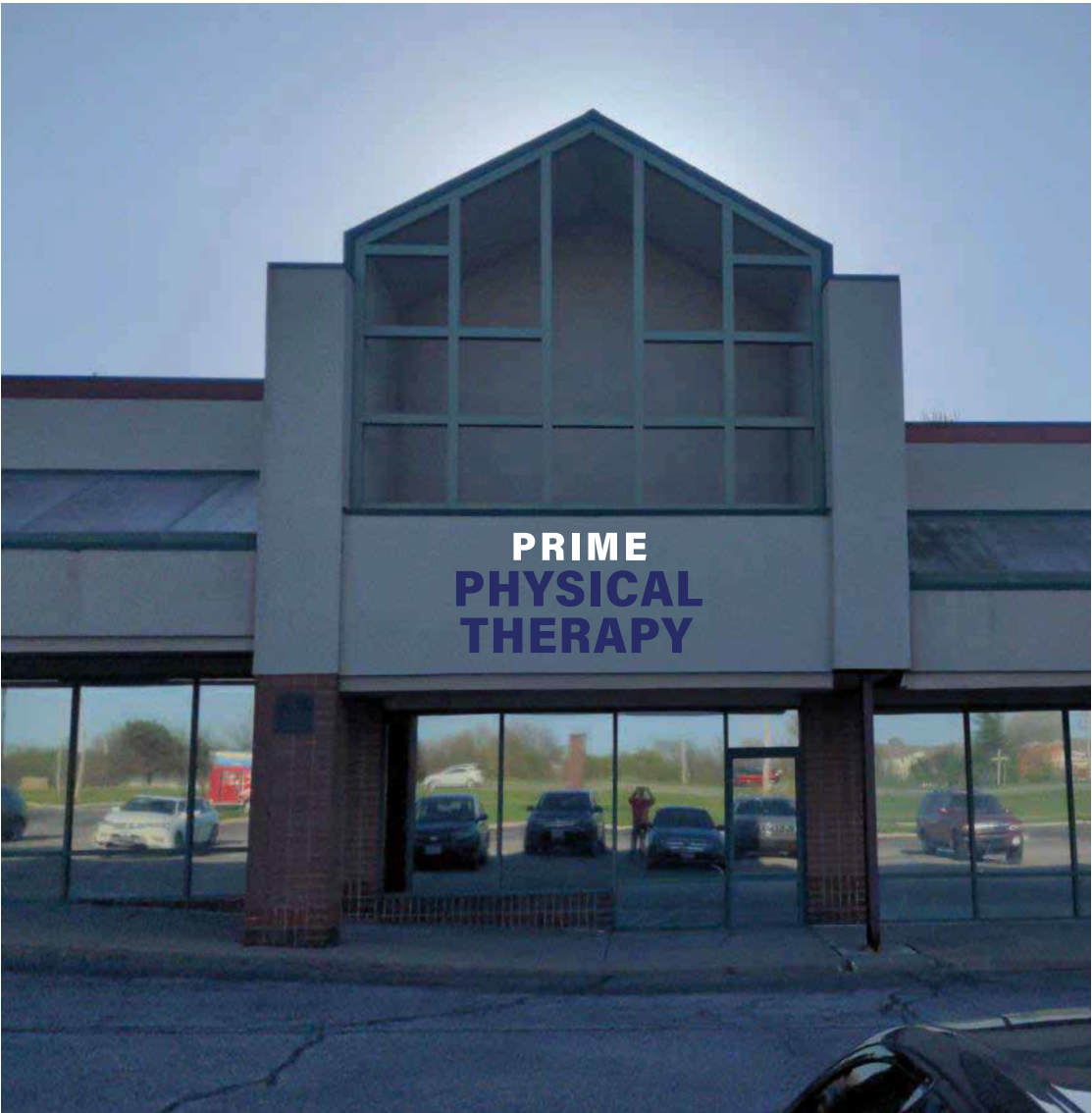
NOTES:

Illuminated Channel Letters
on wireway
Building Facade, total area:
750.5 sf
Signage, total area:
65 sf

DRAWN BY: BNS

REVISED BY:

THIS DRAWING IS THE
PROPERTY OF FASTSIGNS
INTERNATIONAL, INC.
THE BORROWER AGREES, IT
SHALL NOT BE REPRODUCED,
COPIED OR DISPOSED OF,
DIRECTLY OR INDIRECTLY, NOR
USED FOR ANY PURPOSE
WITHOUT PERMISSION.



SIGNATURE
HERE

X

Please sign & return drawing/s to **FASTSIGNS**
Signature below indicates approval of BOTH design & placement of sign/s

DATE _____

FIELD VERIFY ALL MEASUREMENTS BEFORE BEGINNING ANY WORK.
INSTALLER TO VERIFY MOUNTING SURFACE PRIOR TO INSTALLATION.