



June 27, 2022

Summit Homes  
120 SE 30<sup>th</sup> St.  
Lee's Summit, MO 64082

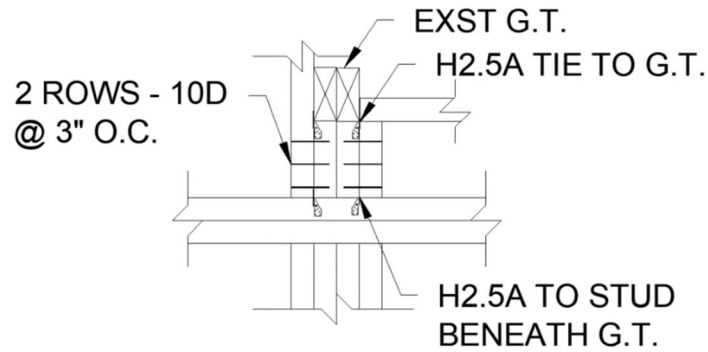
**RE: Field issue of G.T. bearing Lot #89 Reserve at Stoney Creek – 1536 SW Georgetown Dr. Lee's Summit, MO 64082 – Permit # PRRES20215418**

City of Lee's Summit Comment: Dbl girder truss at front bed #3 bearing on blocks above top plate, provide proper bearing and attach for uplift resistance.

- G.T. E5 is bearing on (2) 2x4 cripple studs due to change in elevation.
- 2x4 cripple studs supporting G.T. are approximately 1' tall.
- G.T. is spanning approximately 14' 4" and supported by exterior walls.

**Recommendations:**

- Attach H2.5A Hurricane Ties to G.T., top plate, and cripple studs.
- Nail outside cripple studs to cripple (2) studs supporting G.T. w/ 10d @ 3" O.C.
- Attach H2.5A Hurricane Ties per manufacturer's specifications given below.
- See image below for more details.



Model No.	Ga.	Fasteners (in.)			DF/SP Allowable Loads			Uplift with 0.131" x 1 1/2" Nails (160)	SPF/HF Allowable Loads			Uplift with 0.131" x 1 1/2" Nails (160)	Code Ref.
		To Rafters/Truss	To Plates	To Studs	Uplift (160)	Lateral (160)			Uplift (160)	Lateral (160)			
						F <sub>1</sub>	F <sub>2</sub>			F <sub>1</sub>	F <sub>2</sub>		
H1	18	(6) 0.131 x 1 1/2	(4) 0.131 x 2 1/2	—	480	510	190	455	425	440	165	370	IBC, FL, LA
H1.81Z	18	(6) 0.131 x 1 1/2	(4) 0.131 x 2 1/2	—	540	440	170	460	465	380	130	395	—
H2A	18	(5) 0.131 x 1 1/2	(2) 0.131 x 1 1/2	(5) 0.131 x 1 1/2	525	130	55	—	495	130	55	—	IBC, FL, LA
H2ASS	18	(5) 0.131 x 1 1/2	(2) 0.131 x 1 1/2	(5) 0.131 x 1 1/2	400	130	55	400	345	130	55	345	—
H2.5A	18	(5) 0.131 x 2 1/2	(5) 0.131 x 2 1/2	—	700	110	110	625	615	110	110	540	IBC, FL, LA
H2.5ASS	18	(5) 0.131 x 2 1/2	(5) 0.131 x 2 1/2	—	440	75	70	365	380	75	70	310	—
H2.5T	18	(5) 0.131 x 2 1/2	(5) 0.131 x 2 1/2	—	590	135	145	480	565	135	145	475	IBC, FL, LA

Sincerely,

Bradley Huxol, PE

