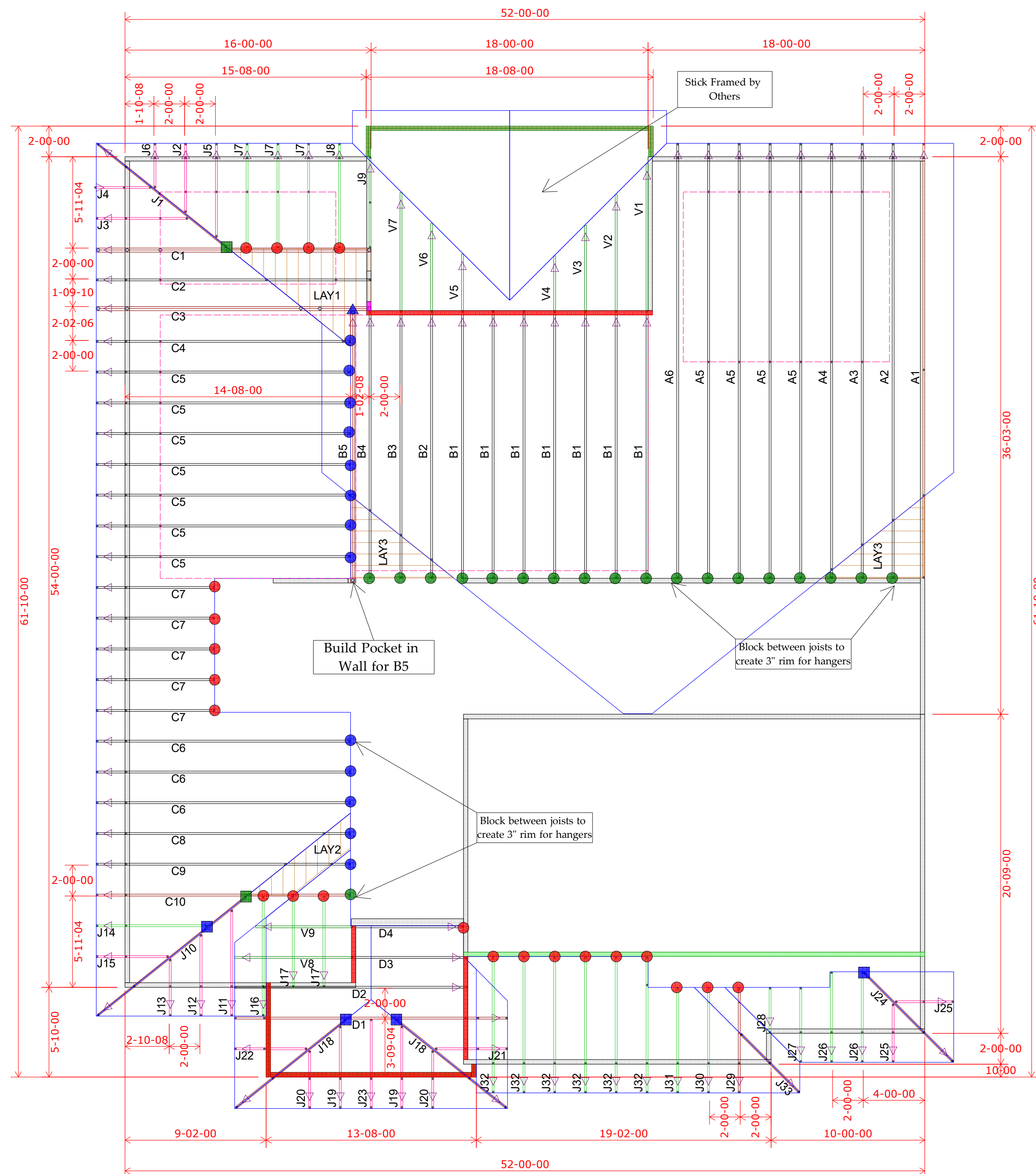


RELEASE FOR CONSTRUCTION  
AS NOTED ON PLANS REVIEW  
DEVELOPMENT SERVICES  
LEE'S SUMMIT, MISSOURI  
06/28/2022 8:25:46

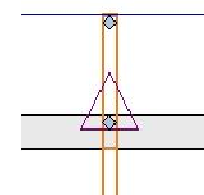


## 1st Floor Truss Layout

Scale: 3/16" = 1'

	HANGER SCHEDULE	Quantity
●	LUS24	25
●	LUS26	13
●	HUS26	28
▲	HHUS26-2	0
▲	HGUS26-2	1
▲	HGUS28-3	0
■	LTHJA26	0
■	TJC37	5
■	TJC57	8
▲	HTS20	0

Triangle denotes the left end of the Truss as it appears on the Engineered Drawings provided.






Unless otherwise specified  
by Engineer Of Record,  
Wheeler Lumber, LLC  
recommends an uplift  
connection at each bearing  
point per the following:

# of Uplift	Connector
0 - 495:	(1) H2.5A
495 - 990:	(2) H2.5A
990 - 1245:	(1) HTS20

Installation per Simpson  
Strong-Tie guidelines.

For Reactions greater than 1245#, refer to EOR.

Wall Heights:  
 1st Floor = 9-1-2 U.N.O.  
 2nd Floor = 8-1-2 U.N.O.

Wall Heights	
9-01-02	
10-01-02	
11-01-02	

EVERSTEAD  
SHOP DRAWINGS/SUBMITTAL REVIEW

SUBMITTAL WAS REVIEWED FOR DESIGN CONFORMITY  
AND GENERAL CONFORMANCE TO CONTRACT  
DOCUMENTS ONLY. THE CONTRACTOR IS RESPONSIBLE  
FOR CONFIRMING AND CORRELATING DIMENSIONS AT  
JOBSITE FOR TOLERANCE, CLEARANCE, QUANTITIES,  
FABRICATION, COORDINATION OF HIS OR HER WORK  
WITH OTHER TRADES, AND FULL COMPLIANCE WITH  
CONTRACT DOCUMENTS.

STATUS:

APPROVED

06/23/2022

REVIEWED BY:

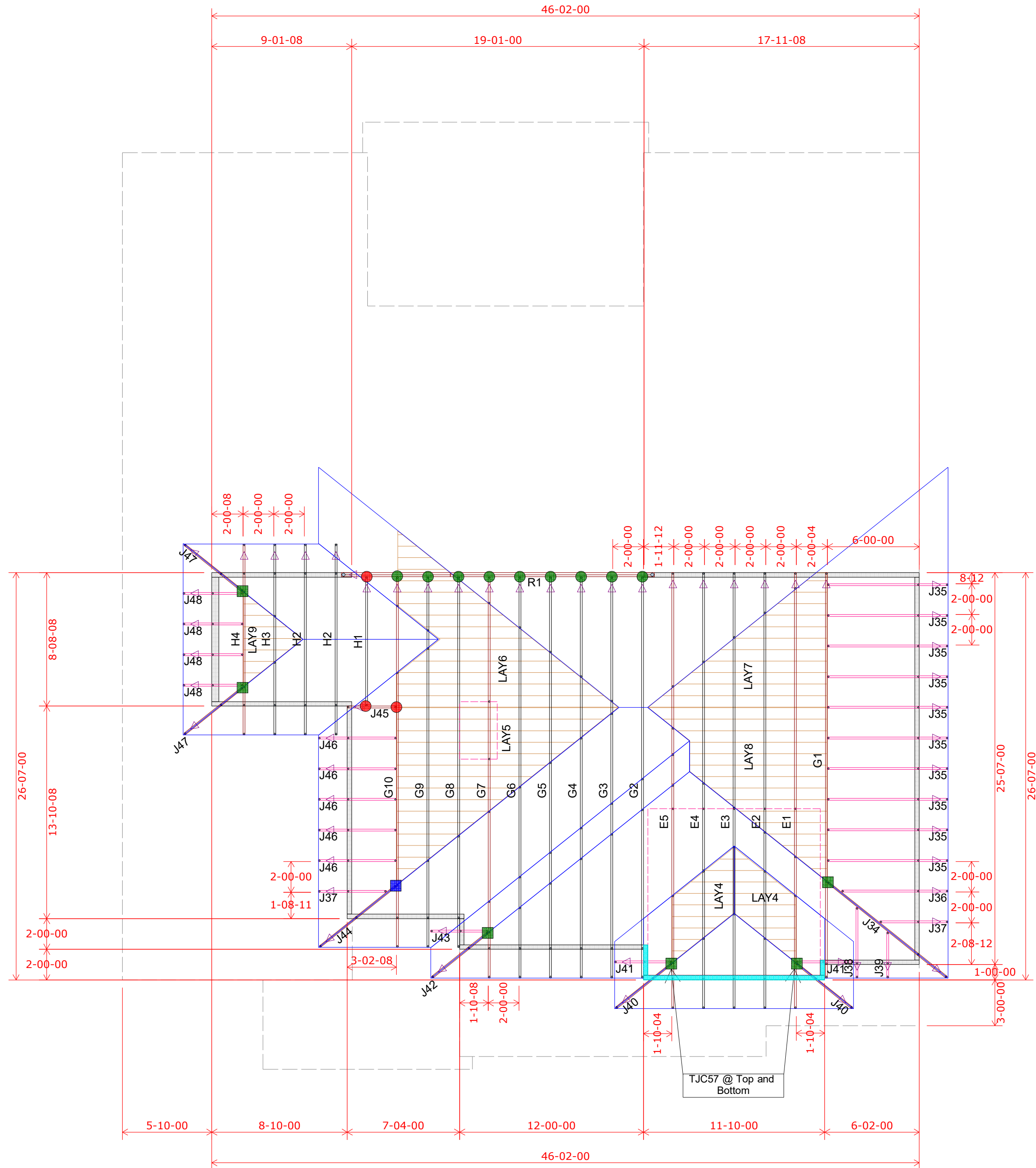
BH

ENGINEER, EVERSTEAD

[illegible]

*Wheeler Lumber  
1959 Old Hwy 50 NE  
Waverly, KS 66871*

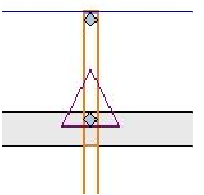
RELEASE FOR CONSTRUCTION  
AS NOTED ON PLANS REVIEW  
DEVELOPMENT SERVICES  
LEE'S SUMMIT, MISSOURI  
06/28/2022 8:25:36



2nd Floor Truss Layout  
Scale: 3/16" = 1'

HANGER SCHEDULE	Quantity
LUS24	25
LUS26	13
HUS26	28
HHUS26-2	0
HGUS26-2	1
HGUS28-3	0
LTHJA26	0
TJC37	5
TJC57	8
HTS20	0

Triangle denotes the left end of the Truss as it appears on the Engineered Drawings provided.





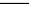
Unless otherwise specified by Engineer Of Record, Wheeler Lumber, LLC recommends an uplift connection at each bearing point per the following:

# of Uplift	Connector
0 - 495:	(1) H2.5A
495 - 990:	(2) H2.5A
990 - 1245:	(1) HTS20

Installation per Simpson Strong-Tie guidelines.

For Reactions greater than 1245#, refer to EOR.

Wall Heights:  
1st Floor = 9'-1-2 U.N.O.  
2nd Floor = 8'-1-2 U.N.O.

Wall Heights	
9-01-02	
10-01-02	
11-01-02	

EVERSTEAD  
SHOP DRAWINGS/SUBMITTAL REVIEW

SUBMITTAL WAS REVIEWED FOR DESIGN CONFORMITY AND GENERAL CONFORMANCE TO CONTRACT DOCUMENTS ONLY. THE CONTRACTOR IS RESPONSIBLE FOR CONFIRMING AND CORRELATING DIMENSIONS AT JOBSITE FOR TOLERANCE, CLEARANCE, QUANTITIES, FABRICATION, COORDINATION OF HIS OR HER WORK WITH OTHER TRADES, AND FULL COMPLIANCE WITH CONTRACT DOCUMENTS.

STATUS:  
**APPROVED**  
06/23/2022  
REVIEWED BY:  
**BH**  
ENGINEER, EVERSTEAD

Customer

Job Name

Job Site Address

City, State

Designer

6/14/2022

Summit Homes

Lot 156 Woodside Ridge

365 NW Patch Ct

Lee's Summit MO

Chuck Haspels (785) 746-4266

Job # B220101

Shop Drawing Approval

THIS LAYOUT IS THE SOLE SOURCE FOR FABRICATION OF TRUSSES AND VOIDS ALL PREVIOUS ARCHITECTURAL OR OTHER TRUSS LAYOUTS, REVIEW AND APPROVAL OF THIS LAYOUT MUST BE RECEIVED BEFORE ANY TRUSSES WILL BE BUILT. VERIFY ALL CONDITIONS TO INSURE AGAINST CHANGES THAT WILL RESULT IN EXTRA CHARGES TO YOU.

Wheeler Lumber

1959 Old Hwy 50 NE

Waverly, KS 66871