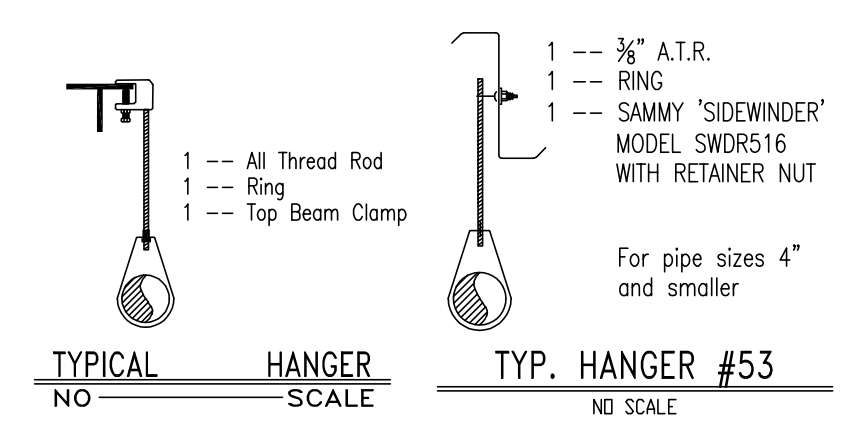


AREA #1

AREA CALCULATED	WORKSHOP
DENSITY	0.20
AREA	1528 sqft
BASIS OF DESIGN	0.20 gpm/sqft
NUMBER OF SPRINKLERS IN CALCULATED AREA	12
SPRINKLER FLOW	569.783 gpm
PRESSURE	48.133 psi
SYSTEM DEMAND	569.783 gpm
DEMAND LOCATION	HOSE ALLOW
CITY CONNECTION	250 gpm

1 FLOOR PLAN
1/8" = 1'-0"



- LEGEND**
- DN - VERTICAL PIPE DOWN OR DROP NIPPLE
 - RN - VERTICAL PIPE UP OR RISER NIPPLE
 - UP - VERTICAL PIPE UP
 - T.O.S. - TOP OF STEEL ELEVATION ABOVE FIN. FLR.
 - P.O.L. - PIPE-O-LET
 - G.S.N. - GROOVED SHAPE NIPPLE
 - U.N.O. - UNLESS NOTED OTHERWISE
 - A.F.F. - ABOVE FINISHED FLOOR
 - N.T.S. - NOT TO SCALE
 - H.L.F. - HANGER TO BE DETERMINED DURING INSTALLATION
 - C.O.J. - PIPING TO BE CUT ON JOB DURING INSTALLATION
 - [12'-4"] - ELEVATION OF PIPE CENTER-LINE ABOVE FIN. FLR.
 - [12 8H] - DISTANCE FROM PIPE CENTER-LINE TO STRUCTURE ATTACHMENT
 - PIPE HANGER
 - GROOVED COUPLING
 - ○ - HYDRAULIC REFERENCE POINT
 - ○ - FINISHED CEILING HEIGHT ABOVE THE FIN. FLR.

- CONSTRUCTION**
- METAL DECK ON STEEL BEAMS, PURLINS
- PIPE TYPE**
- STEEL PIPING:
 - ALL GROOVED PIPING TO BE SCH. 10 PIPE
 - ALL THREADED PIPING TO BE SCH. 40 PIPE

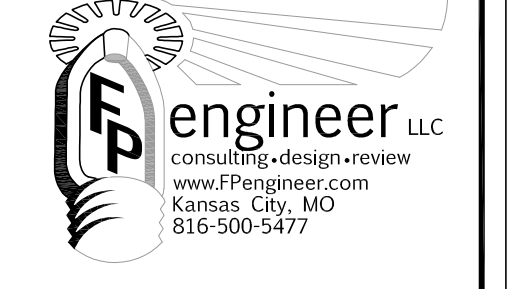
DESIGN CRITERIA

WORK SHOP AREAS: DESIGN IS IN ACCORDANCE WITH THE DENSITY/AREA HYDRAULIC CALCULATION METHOD OF NFPA 13 (2016 ED.) SECTION 11.2.3.2 FOR ORDINARY HAZARD GROUP II OCCUPANCY. THE DESIGN DENSITY IS 0.20 gpm/sqft. AND THE AREA OF SPRINKLER OPERATION IS 1500 sqft. TOTAL ALLOWANCE FOR HOSES IS 250 gpm IN ACCORDANCE WITH TABLE 11.2.3.1.2.

PAINT BOOTHS: PER NFPA 13, EXTRA HAZARD GROUP II OCCUPANCY THE DESIGN DENSITY IS 0.40 gpm/sqft. AND THE ENTIRE AREA OF SPRINKLER OPERATION IS 2500 sqft. OR AREA OF THE PAINT BOOTH. PROVIDE SEPARATE CONTROL VALVE FOR FIRE SPRINKLERS THAT IS OPERABLE FROM THE FLOOR LEVEL.

THREAD	MAKE	S.I.N.	MODEL	KF	TEMP.	SYMBOL	QUANT.
1/2"	VIKING	VK300	"MICROFAST" QUICK RESPONSE BRASS UPRIGHT	5.6	200°	○	88
1/2"	VIKING	VK302	"MICROFAST" QUICK RESPONSE CHROME PENDENT	5.6	155°	⊙	16
1/2"	VIKING	VK305	"MICROFAST" QUICK RESPONSE BRASS HSW	5.6	200°	◀	04
1"	VIKING	VK275	"MICROFAST" QUICK RESPONSE DRY BRASS HSW	8.0	286°	◀	01
3/4"	VIKING	VK531	QUICK RESPONSE ELO BRASS UPRIGHT	11.2	286°	⊙	02
3/4"	VIKING	VK536	QUICK RESPONSE ELO CHROME PENDENT	11.2	286°	⊙	06
TOTAL							117

REV.	DATE	DESCRIPTION
1	06/27/2022	REVISED PER CITY COMMENTS



FALCON FIRE PROTECTION, INC.
1239A CLAY STREET
N. KANSAS CITY, MO 64116
Ph# 816-734-0018

CONTRACT NUMBER

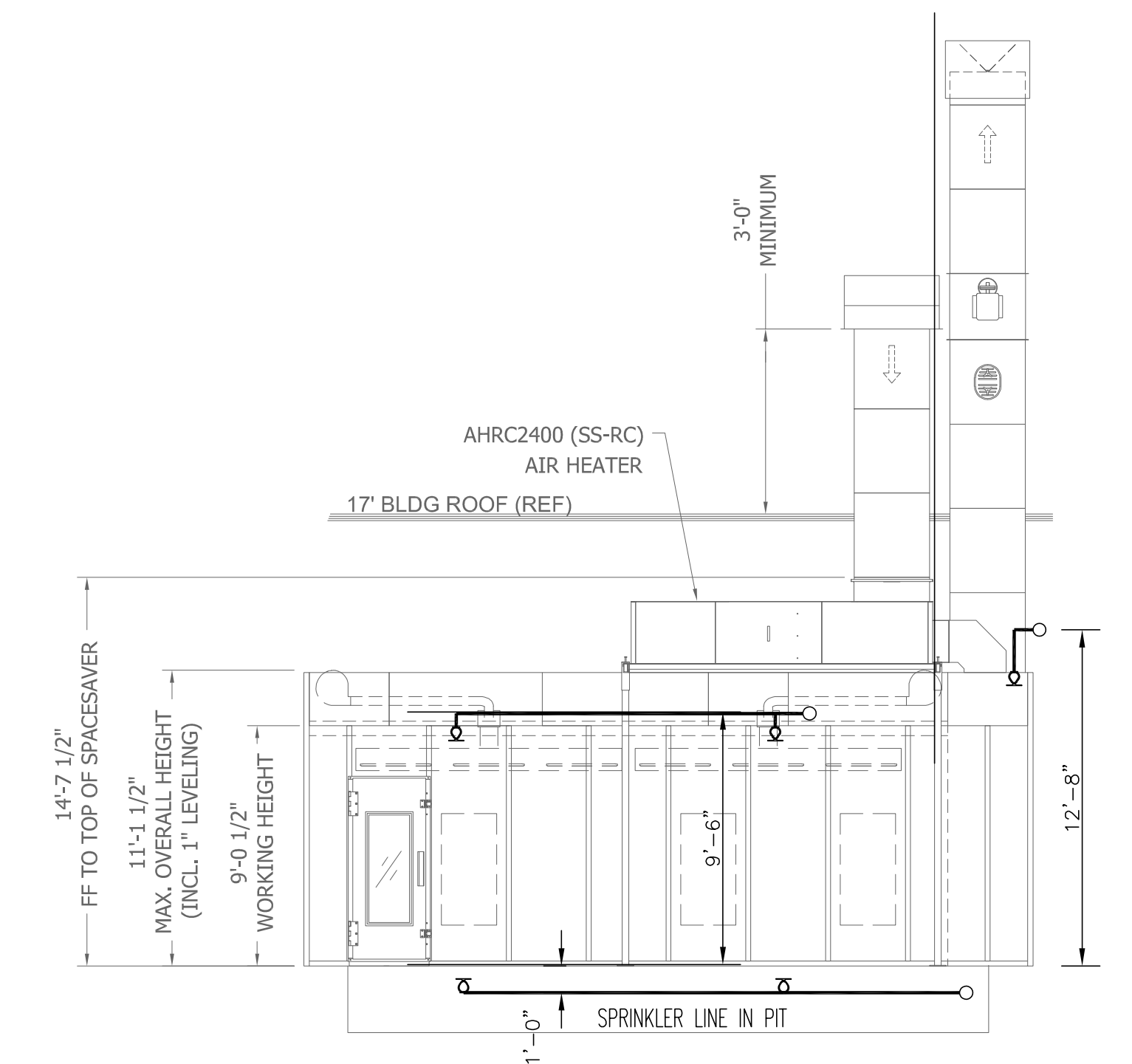
CALIBER COLLISION
710 SE BLUE PARKWAY
LEE'S SUMMIT, MO. 64063

DRAWN BY
R.V.

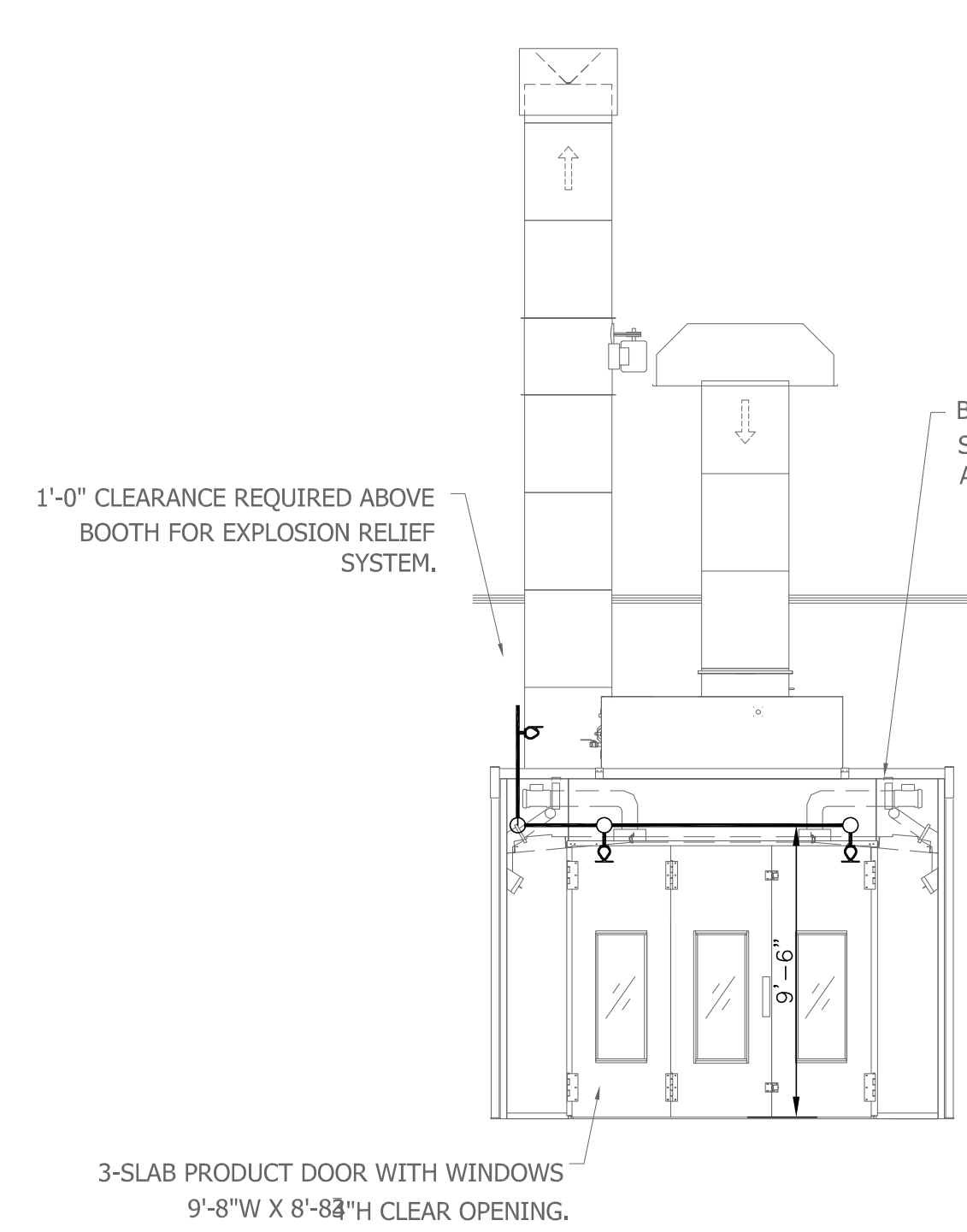
SCALE
1/8" = 1'-0"

DATE
04-14-2022

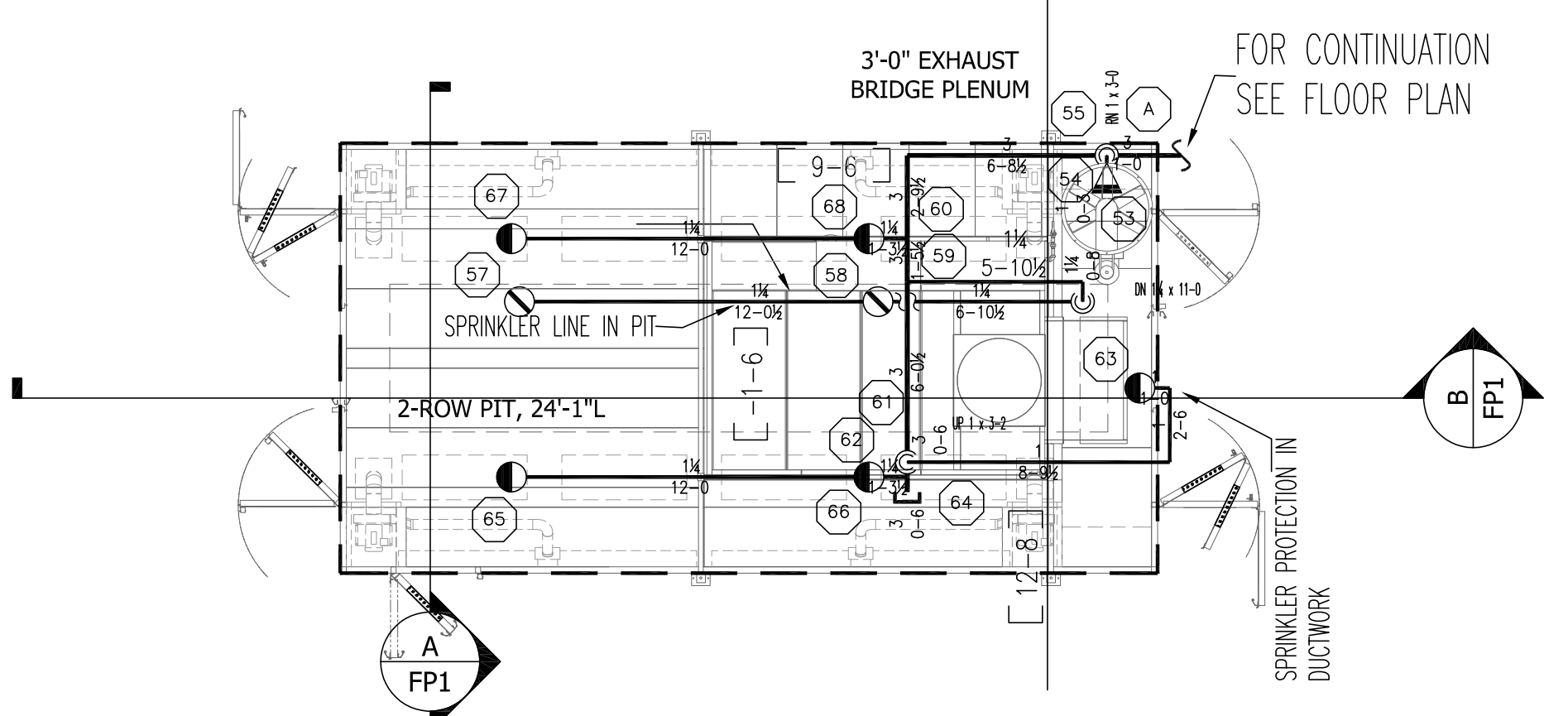
SHEET NUMBER
FP1 OF 1



B SIDE VIEW LOOKING NORTH
3/16" = 1'-0"



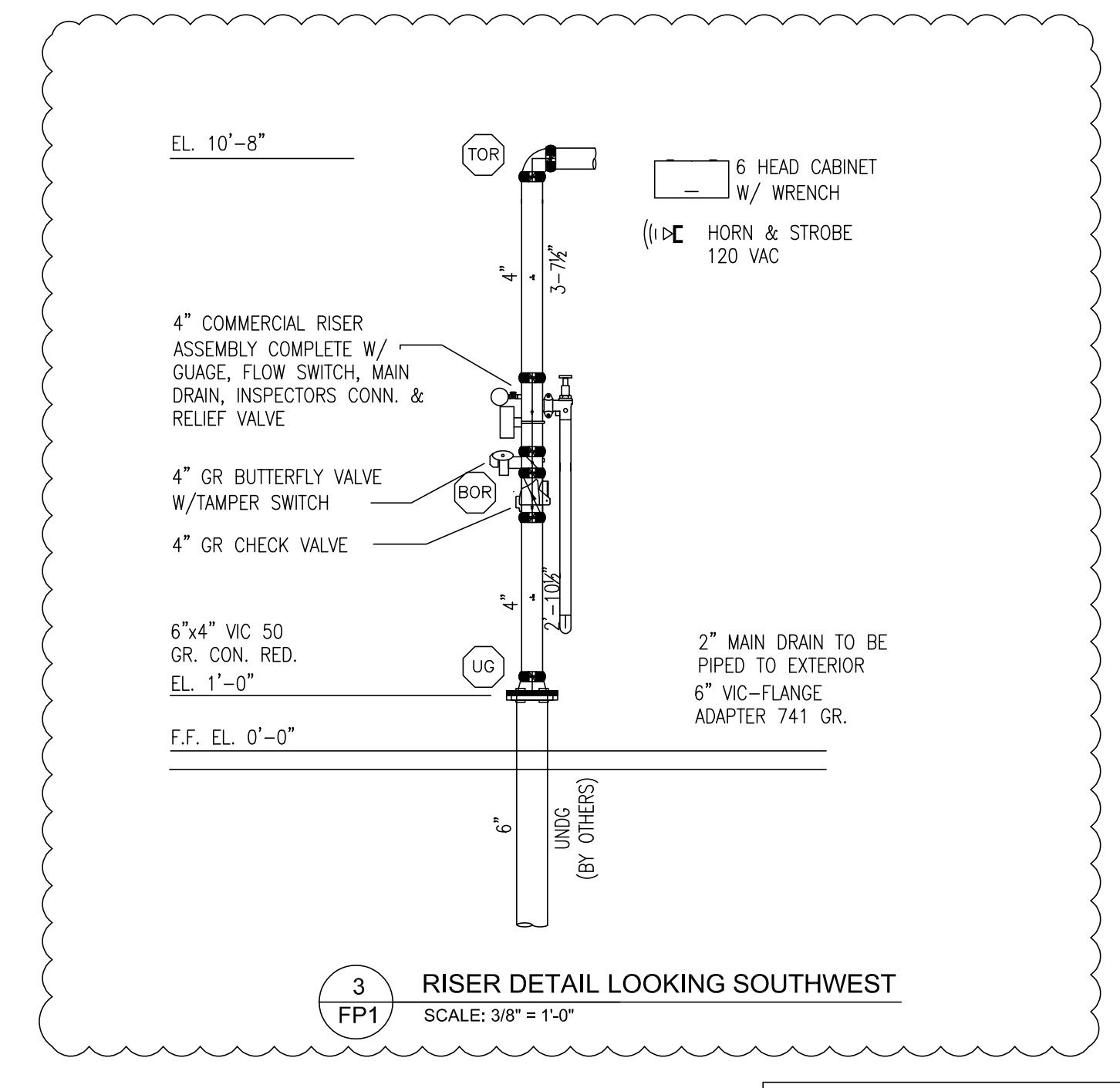
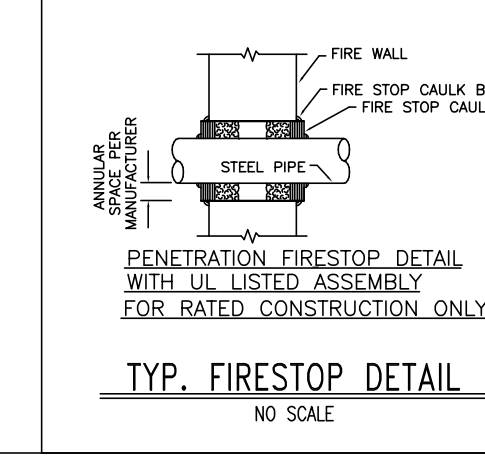
A FRONT VIEW LOOKING EAST
3/16" = 1'-0"



2 PAINT BOOTH
3/16" = 1'-0"

AREA #2

AREA CALCULATED	ONE PAINT BOOTH
DENSITY	0.40
AREA	6.86
BASIS OF DESIGN	0.40 gpm/sqft
NUMBER OF SPRINKLERS IN CALCULATED AREA	8
SPRINKLER FLOW	848.459 gpm
PRESSURE	68.828 psi
SYSTEM DEMAND	848.459 gpm
DEMAND LOCATION	HOSE ALLOW
CITY CONNECTION	500 gpm



3 RISER DETAIL LOOKING SOUTHWEST
SCALE: 3/8" = 1'-0"

CODE INFORMATION

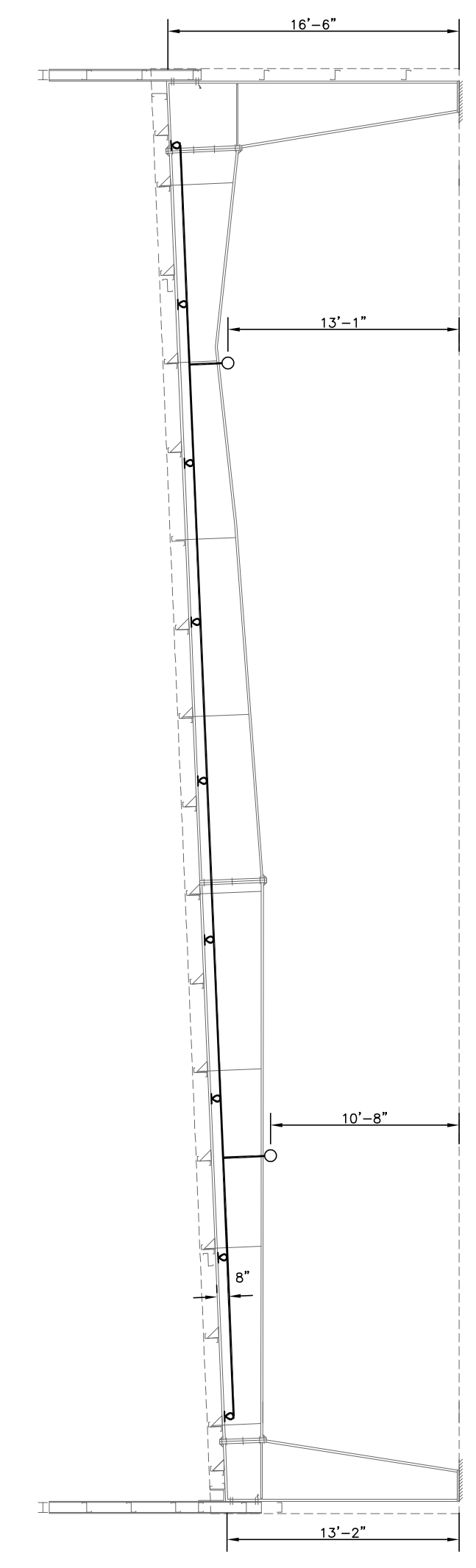
CODE INFORMATION
BUILDING CODE: INTERNATIONAL BUILDING CODE (2018 ED.)
INTERNATIONAL FIRE CODE (2018 ED.)
NFPA-13 (2016 ED.)

OCCUPANCY CLASSIFICATIONS
B - BUSINESS (OFFICE AREA)
S1 - MODERATE HAZARD STORAGE (SERVICE BAY AREA)

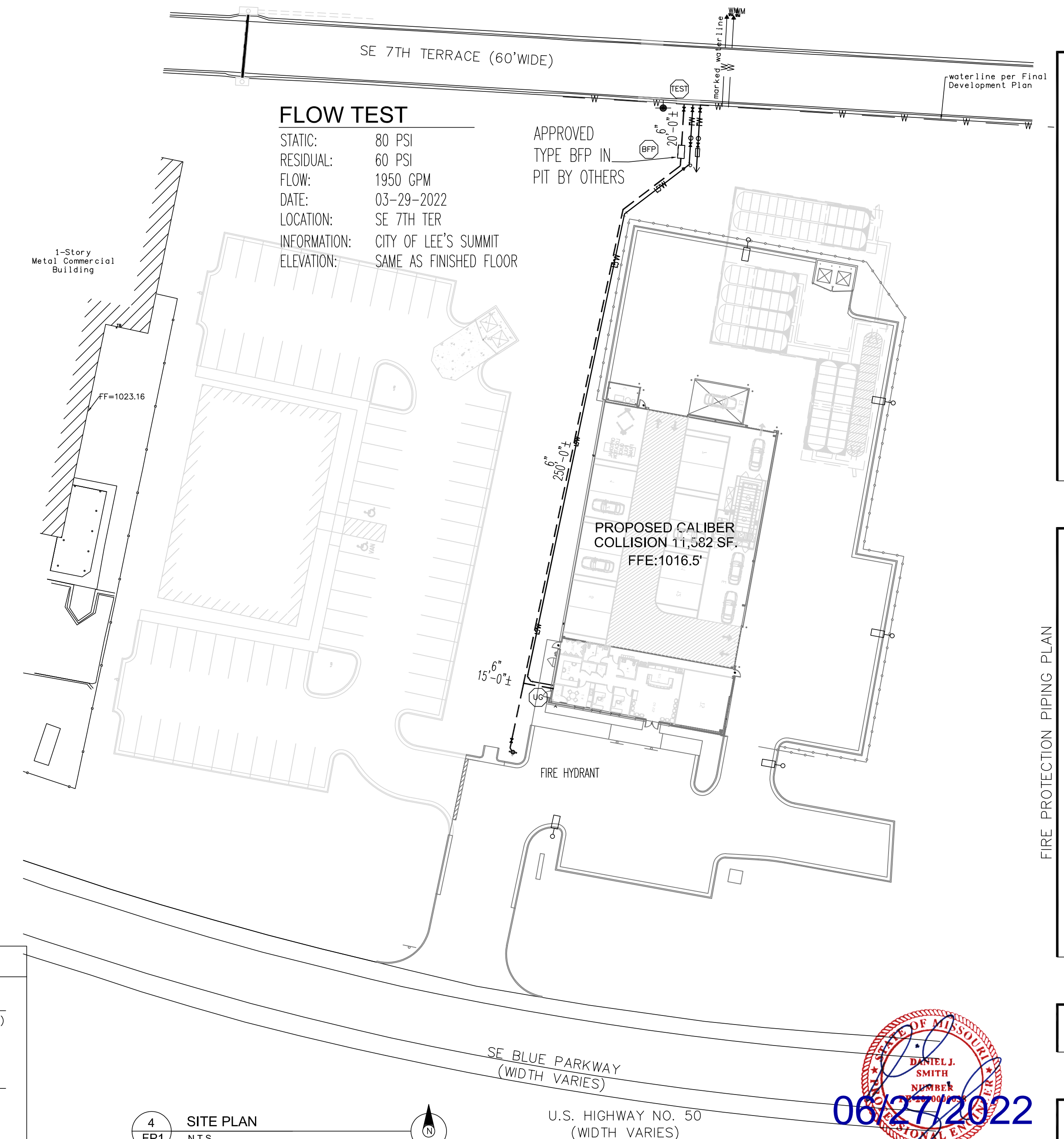
CONSTRUCTION TYPES
TYPE II-B (SPRINKLED)

HANGER SPACING TABLE

NOMINAL PIPE SIZE (IN.)	3/4"	1"	1 1/4"	1 1/2"	2"	2 1/2"	3"	3 1/2"	4"	5"	6"	8"
STEEL PIPE EXCEPT THREADED LIGHTWALL	N/A	12-0	12-0	15-0	15-0	15-0	15-0	15-0	15-0	15-0	15-0	15-0
THREADED LIGHTWALL STEEL PIPE	N/A	12-0	12-0	12-0	12-0	12-0	N/A	N/A	N/A	N/A	N/A	N/A
CPVC	5-6	6-0	6-6	7-0	8-0	9-0	10-0	N/A	N/A	N/A	N/A	N/A



FLOOR PLAN
1/8" = 1'-0"



FLOW TEST

STATIC: 80 PSI
RESIDUAL: 60 PSI
FLOW: 1950 GPM
DATE: 03-29-2022
LOCATION: SE 7TH TER
CITY OF LEE'S SUMMIT
ELEVATION: SAME AS FINISHED FLOOR

APPROVED
TYPE BFP IN
PIT BY OTHERS



S.E. HIGHWAY NO. 50
(WIDTH VARIES)