

UTILITY PLAN LEGEND

- PROPERTY LINE
- EXISTING SANITARY SEWER
- EXISTING STORM
- EXISTING WATER PIPE
- EXISTING OVERHEAD POWER LINE
- EXISTING UNDERGROUND POWER LINE
- STORM SEWER
- STORM HEADER PIPE AND ROOF DRAINS
- UNDERGROUND POWER CONDUIT
- NATURAL GAS PIPE
- CABLE TELEVISION CONDUIT
- WATER PIPE
- SANITARY SEWER SERVICE LINE
- SANITARY SEWER MAIN (PER SHEETS C6.08-C6.12)

KEYNOTES

- WATER (W#)**
- W1 APPROXIMATE LOCATION OF PROPOSED 12" PUBLIC WATERMAIN. CONTRACTOR SHALL COORDINATE WITH CITY ON FINAL LOCATION.
- W2 APPROXIMATE LOCATION OF PROPOSED 10" PRIVATE PRESSURIZED FIRE PROTECTION LOOP. INSTALL 3,200 LF ± 10" C900 DR 14. CONTRACTOR SHALL COORDINATE WITH CITY ON FINAL LOCATION.
- W3 DOMESTIC WATER SERVICE TAP. CONNECTION REQUIREMENTS TO BE DETERMINED. CONTRACTOR SHALL COORDINATE WITH CITY ON CONNECTION.
- W4 INSTALL WATER METER PER CITY WATER STANDARDS AND SPECIFICATIONS.
- W5 CONNECT TO MAIN 12"x12" TEE, AND INSTALL 250± LF OF 12" C900 DR 14 FOR FIRE PROTECTION WATER SERVICE. CONTRACTOR SHALL COORDINATE WITH CITY ON CONNECTION.
- W6 INSTALL DOUBLE CHECK VALVE ASSEMBLY IN VAULT TO MEET CITY WATER STANDARDS AND SPECIFICATIONS. TAMPER SWITCHES AND THEIR ASSOCIATED WIRING WILL BE PROVIDED FOR THE SHUT-OFF VALUES IN THE VAULT. COORDINATE INSTALL AND BACKFLOW PREVENTION WITH CITY WATER AND MEP PLANS.
- W7 APPROXIMATE LOCATION OF PROPOSED YARD FIRE HYDRANT BY CONTRACTOR. YARD HYDRANTS SHALL MATCH CITY STANDARD AND DETAILS. SHALL BE PAINTED RED.
- W8 APPROXIMATE LOCATION OF PROPOSED PRIVATE FIRE HYDRANT BY CONTRACTOR. PRIVATE HYDRANTS SHALL MATCH CITY STANDARD AND DETAILS. SHALL BE PAINTED YELLOW WITH A SILVER TOP.
- W9 PUBLIC FIRE HYDRANTS. SEE SEPARATE PLANS.
- GAS (G#)**
- G1 APPROXIMATE LOCATION OF PROPOSED GAS MAIN. CONTRACTOR SHALL COORDINATE WITH ENGINEER ON FINAL LOCATION OF GAS MAIN AND CONTACT ENGINEER WITH ANY CHANGES.
- G2 INSTALL ±209 LF OF NEW GAS SERVICE TO PROPOSED GAS MAIN. COORDINATE WITH UTILITY COMPANY FOR EXACT LOCATION, ROUTING, AND CONNECTION.
- ELECTRIC (E#)**
- E1 INSTALL APPROXIMATELY 100± LF OF PRIMARY ELECTRICAL SERVICE PER EVERGY/LEE'S SUMMIT DESIGN STANDARDS AND SPECIFICATIONS. VERIFY CONDUIT SIZE AND ROUTING WITH CITY AND EVERGY. THE ALIGNMENT IS APPROXIMATE. CONTRACTOR SHALL COORDINATE ELECTRICAL SERVICE ROUTE DIRECTLY WITH CITY AND EVERGY.
- E2 PROPOSED SITE LIGHTING. REFERENCE SITE LIGHTING PLANS FOR DETAILS.
- E3 INSTALL APPROXIMATELY 1000± LF OF SECONDARY ELECTRICAL SERVICE PER EVERGY/LEE'S SUMMIT DESIGN STANDARDS AND SPECIFICATIONS. VERIFY CONDUIT SIZE AND ROUTING WITH CITY AND EVERGY. THE ALIGNMENT IS APPROXIMATE. CONTRACTOR SHALL COORDINATE ELECTRICAL SERVICE ROUTE DIRECTLY WITH CITY AND EVERGY.

STORM ROOF DRAINS (RD#)

- RD1 INSTALL 12" HDPE FROM THE ROOF DRAIN TO STORM HEADER PIPE WITH A 1.0% MINIMUM SLOPE. MINIMUM COVER OF PIPE IS 2.5' AND SHALL COORDINATE WITH ALL OTHER IMPROVEMENTS. INCLUDE BENDS, FITTINGS, AND OTHER PARTS FOR INSTALLATION. SEE MEP PLANS FOR ROOF DRAIN LOCATIONS AND DETAILS.
- RD2 INSTALL BACK OF CURB PERFORATED PIPE WITH SOCK AND TIE INTO CLOSEST PRIVATE STORM SEWER.

SANITARY SEWER SERVICE (SS#)

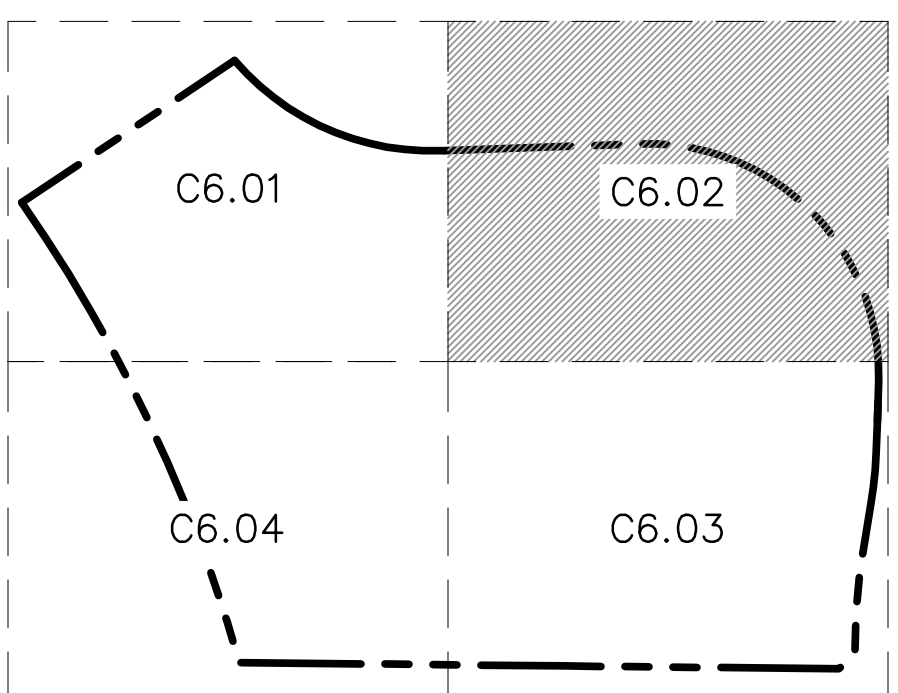
- SS1 SANITARY SEWER SERVICE LINES. REFERENCE SHEETS C6.05 -C6.07 FOR INFORMATION ON SANITARY SEWER SERVICE LINES.
- SS2 PRIVATE SANITARY SEWER MAIN EXTENSION. REFERENCE SHEETS C6.08 -C6.12 PRIVATE SANITARY SEWER SHEETS FOR MORE INFORMATION.

EXISTING UTILITIES (X#)

- X1 EXISTING SANITARY SEWER MAIN
- X2 EXISTING STORM SEWER
- X3 EXISTING WATER MAIN

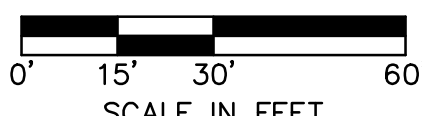
NOTE:

- FDC SHALL BE LOCATED WITH 100' OF FIRE HYDRANT.
- THE ALL ISSUES PERTAINING TO LIFE SAFETY AND PROPERTY PROTECTION FROM THE HAZARDS OF FIRE, EXPLOSION OR DANGEROUS CONDITIONS IN NEW AND EXISTING BUILDINGS, STRUCTURES AND PREMISES, AND TO THE SAFETY TO FIRE FIGHTERS AND EMERGENCY RESPONDERS DURING EMERGENCY OPERATIONS, SHALL BE IN ACCORDANCE WITH THE 2018 INTERNATIONAL FIRE CODE.



KEY MAP

NOT TO SCALE



7301 West 133rd Street, Suite 200
Overland Park, KS 66213-4755
TEL 913.381.1170
www.olson.com

SCANNELL PROPERTIES

MITCHELL ALAN
PE 2008001014
05-09-24
PROFESSIONAL ENGINEER

REV	DATE	DESCRIPTION
1	12.24.2021	CITY COMMENTS
2	01.03.2022	CITY COMMENTS
3	02.24.2022	CITY COMMENTS
4	02.24.2022	CITY COMMENTS
5	02.24.2022	CITY COMMENTS
6	02.24.2022	CITY COMMENTS
7	02.24.2022	CITY COMMENTS

UTILITY PLAN

PHASE I/FINAL DEVELOPMENT PLAN

SCANNELL DEVELOPMENT LEE'S SUMMIT LOGISTICS

NORTHWEST CORNER OF TUDOR ROAD AND MAIN STREET

LEE'S SUMMIT, MISSOURI

drawn by: OLSSON

checked by: ENG

approved by: ENG

checked by: ENG

project no: 021-04157

drawing no: 021-04157.dwg

date:

SHEET

C6.02

2021