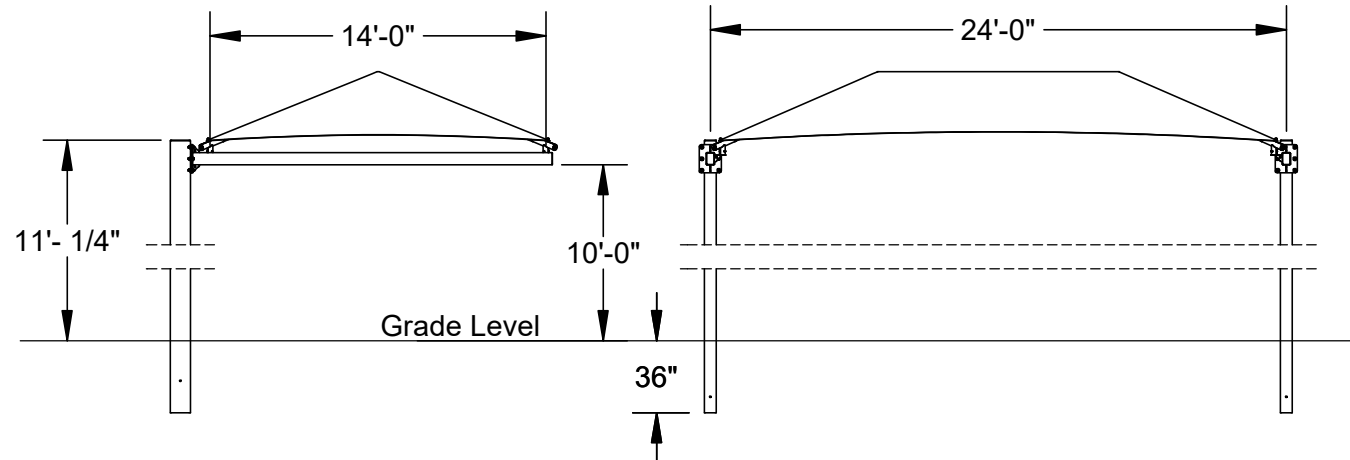

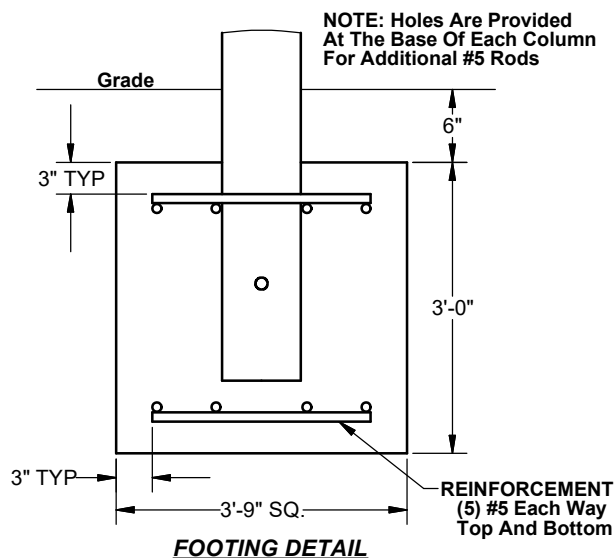



ItemNum.	QTY	ID	DESCRIPTION
01	2	HCC-241410IG	Wldmt - 6" x 10" x 0.25" x 168 1/4" Column
02	1	HCBL-241410IG	Wldmt - 4" x 6" x 180 3/8" Hanging Cantilever Beam (Left)
03	1	HCBR-241410IG	Wldmt - 4" x 6" x 180 3/8" Hanging Cantilever Beam (Right)
04	4	FAB-RA-2812-105_50XX	Rafter - Swaged Ø2 7/8" 12-Gauge x 105 1/2" (Coated)
05	1	FAB-RI-2812-110_50XX	Ridge - Swaged Both Ends Ø2 7/8" 12-Gauge x 110 1/2" (Coated)
06	2	YAN28812XX	Wdmt. - 2 7/8" OD "Y" Rect. Connect
07	4	GEL28812	Elbow - 2 7/8" OD With Glide Mechanism
08	12	HWB0441	Bolt 5/8"- x 2-1/2" HH Grade 5 Zn
09	24	HWWR0120	Washer - 5/8" ID x 1 3/4" OD Flat Zinc Steel USS
10	12	HWN0165	Nut - 5/8" w/ Nylock
11	22	HWS0021	Screw - 1/4" x 1" Self Tapping Torx w/Patch
12	4	HWB0246	Bolt - 3/8"-16 x 3-1/2" HH Grade 5 Zn
13	4	HWN0110	Nut - 3/8"- Zinc Steel Nylock

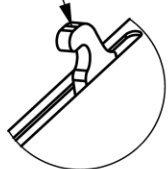


 SUPERIOR <small>RECREATIONAL PRODUCTS</small>	Rev	Date	Init.	Descr.	Superior Recreational Products <small>THIS DOCUMENT AND THE INFORMATION CONTAINED HEREIN IS THE EXCLUSIVE PROPERTY OF SUPERIOR RECREATIONAL PRODUCTS AND HAS BEEN PROVIDED TO YOU IN CONFIDENCE. THIS DOCUMENT AND THE INFORMATION HEREIN MAY NOT BE DISCLOSED OR PROVIDED TO ANY THIRD PARTY OR USED, COPIED, PHOTOGRAPHED OR OTHERWISE REPRODUCED WITHOUT PRIOR EXPRESS WRITTEN PERMISSION OF SUPERIOR RECREATIONAL PRODUCTS.</small>	Description: Hanging Cantilever Shade - 24x14x10, Embedded, with Glide					
						Material:	Rev:	Drawing Number:			
							00	HC241410IG			
						Weight:	Size:	Units:	Tol:	Scale:	Sheet:
						1518.6 lbs.	A	Inch	±.0625 Unless Otherwise Specified	1:84	1 of 2
Date:		04-28-2022		Drawn By:	Kelly.Madden		1050 Columbia Drive, Carrollton GA 30117		Toll Free: 800-327-8774 Local: 770-832-6660		

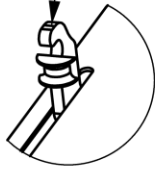


	Rev Date & Description:		Superior Recreational Products THIS DOCUMENT AND THE INFORMATION CONTAINED HEREIN IS THE EXCLUSIVE PROPERTY OF SUPERIOR RECREATIONAL PRODUCTS AND HAS BEEN PROVIDED TO YOU IN CONFIDENCE. THIS DOCUMENT AND THE INFORMATION HEREIN MAY NOT BE DISCLOSED OR PROVIDED TO ANY THIRD PARTY OR USED, COPIED, PHOTOGRAPHED OR OTHERWISE REPRODUCED WITHOUT PRIOR EXPRESS WRITTEN PERMISSION OF SUPERIOR RECREATIONAL PRODUCTS.		Description: Hanging Cantilever Shade - 24x14x10, Embedded, with Glide					
	Rev Date & Description:				Material:		Rev: 00		Drawing Number: HC241410IG	
	Date: 04-28-2022	Drawn By: Kelly.Madden	1050 Columbia Drive, Carrollton GA 30117 Toll Free: 800-327-8774 Local: 770-832-6660			Weight: 1518.6 lbs.	Size: A	Units: Inch	Tol: ±.0625 <small>Unless Otherwise Specified</small>	Scale: 1:84

2 1/2" & 2 7/8"
Glide Hook

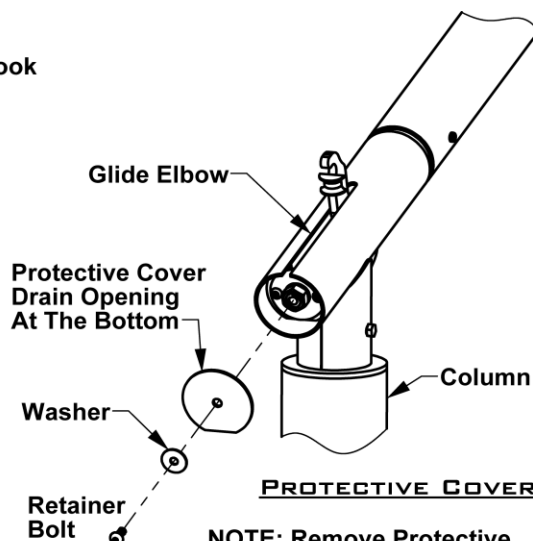


3 1/2" & 5" Glide Hook
With Cable Guide



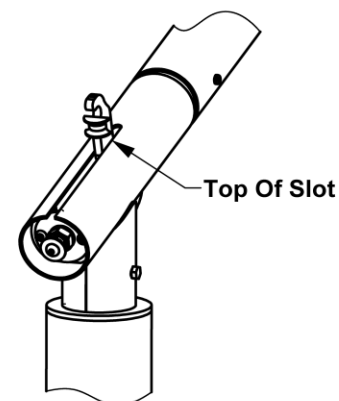
HOOK STYLES

NOTE: Larger Framework Will Have Glide Hooks With A Seperate Position For The Cable. For Standard Glide Elbows Both The Cable And Fabric Are Positioned Over Hook.



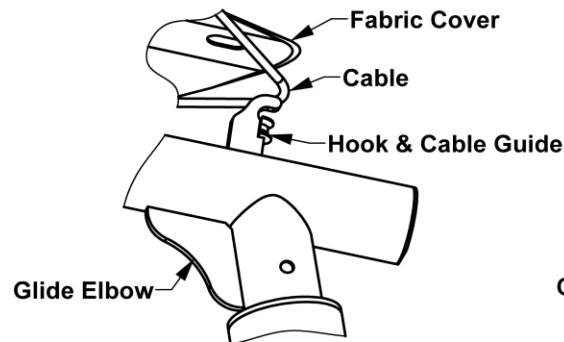
PROTECTIVE COVER

NOTE: Remove Protective Cover From End Of Glide Elbows.



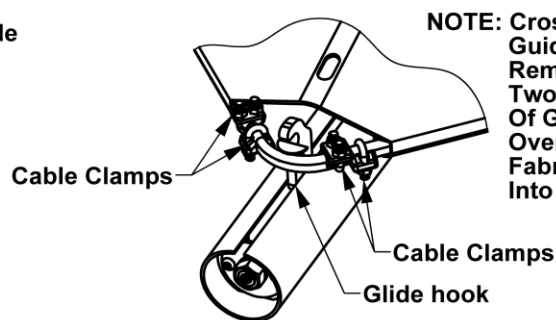
GLIDE ADJUSTMENT

NOTE: Rotate Hex Nut With Hand Tool To Adjust All Glide Hooks To The Top Of Slots Before Installing Fabric.



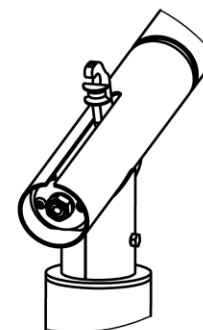
FABRIC INSTALLATION

NOTE: Pull Cable Over Hook Into Cable Guide. Pull Hole In Fabric Corner Over Hook. This Applies To Three Of Four fabric Corners.



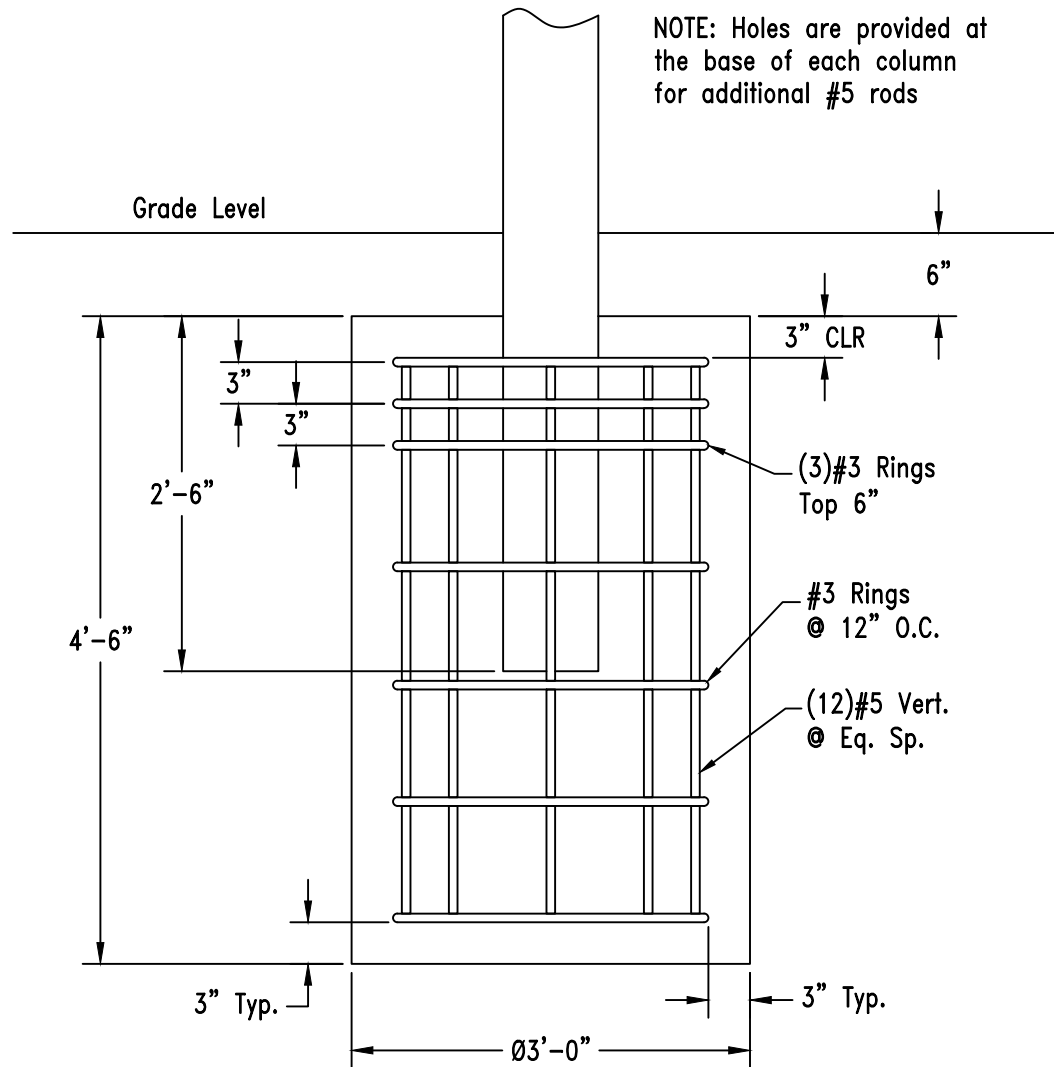
SECURE CABLE ENDS

NOTE: Cross Cable Ends Within Cable Guide. Pull Cables Tight To Remove Any Slack. Secure With Two Cable Clamps On Either Side Of Guide. Pull Strap On Fabric Corner Over Hook Followed By The Hole In Fabric. Tuck Loose cable Ends Back Into Fabric Hems.



FABRIC TENSION

NOTE: Rotate Glide Hex Nuts Equally With Hand Tool To Adjust Cable And Fabric Tension.



Pier Footing Detail
HC241410IG