

June 9, 2022

Summit Homes  
 120 SE 30<sup>th</sup> St.  
 Lee's Summit, MO 64082

**RE: Field Issue of CS-PF installation at great room for Lot #125 Manor at Stoney Creek –1920 SW Merryman Dr.  
 Lee's Summit, MO 64082 – Permit # PRRES20214879**

Findings:

- CS-PF bracing is required on the great room/ covered deck wall, per plans.
  - CS-PF bracing is required corner to corner on the great room/ covered deck wall.
  - Header to braced wall nail pattern is obscured by deck covering.

Recommendations:

- Install CS-PF panels on interior side of great room wall per detail shown in image below.**

For Rim joist attachment:

- Install 6" ledger Loks from sole plate to each floor joist below along the great room/ covered deck wall.
- Attach a H3 hurricane tie to each stud and attach to sole plate per manufacturer's specs.

Or

- Attach HDU2-SDS2.5 holdown device to the corner studs of the great room/covered deck wall.
- Device shall be connected at the top and bottom of the rim/band joists (see image below)
- Install per manufacturer's specs.

Holdowns (cont.)

These products are available with additional corrosion protection. For more information, see p. 14.

For stainless-steel fasteners, see p. 21.

Many of these products are approved for installation with Strong-Drive® SD Connector screws. See pp. 349-352 for more information.

	Model No.	Ga.	Dimensions (in.)					Fasteners (in.)		Minimum Wood Member Size (in.)	Allowable Tension Loads (160)			Code Ref.	
			W	H	B	CL	SO	Anchor Bolt Dia. (in.)	Wood Fasteners		DF/SP	SPF/HF	Deflection at Allowable Load (in.)		
	DTT1Z	14	1 1/2	7 1/2	1 1/2	3/4	3/4	3/4	(6) #9 x 1 1/2" SD	1 1/2 x 5 1/2	840	840	0.17	IBC, FL, LA	
									(8) 0.148 x 1 1/2		910	640	0.167		
									(8) 0.148 x 1 1/2		910	850	0.167		
	DTT2Z	14	3 1/4	6 1/4	1 1/2	3/4	1/2	(8) 1/4 x 1 1/2 SDS	1 1/2 x 3 1/2	1,825	1,800	0.105			
								(8) 1/4 x 1 1/2 SDS		3 x 3 1/2	2,145	1,835	0.128		
	DTT2Z-SDS2.5							(8) 1/4 x 2 1/2 SDS	3 x 3 1/2	2,145	2,105	0.128			
	HDU2-SDS2.5	14	3	8 3/4	3 1/4	1 1/2	1 1/2	3/4	(6) 1/4 x 2 1/2 SDS	3 x 3 1/2	3,075	2,215	0.088		
	HDU4-SDS2.5	14	3	10 3/4	3 1/4	1 1/2	1 1/2	3/4	(10) 1/4 x 2 1/2 SDS	3 x 3 1/2	4,565	3,285	0.114		
	HDU5-SDS2.5	14	3	13 3/4	3 1/4	1 1/2	1 1/2	3/4	(14) 1/4 x 2 1/2 SDS	3 x 3 1/2	5,645	4,340	0.115		
	HDU8-SDS2.5	10	3	16 3/4	3 1/4	1 1/2	1 1/2	3/4	(20) 1/4 x 2 1/2 SDS	3 1/2 x 3 1/2	6,765	5,820	0.11		
									3 1/2 x 3 1/2	6,970	5,995	0.116			
									3 1/2 x 4 1/2	7,870	6,580	0.113			
	HDU11-SDS2.5	10	3	22 1/4	3 1/4	1 1/2	1	3/4	(30) 1/4 x 2 1/2 SDS	3 1/2 x 5 1/2	9,535	8,030	0.137		
									3 1/2 x 5 1/2	11,175	9,610	0.137			
									3 1/2 x 7 1/4	10,770	9,260	0.122			
	HDU14-SDS2.5	7	3	25 3/4	3 1/4	1 1/2	1	3/4	(36) 1/4 x 2 1/2 SDS	3 1/2 x 5 1/2	14,390	12,375	0.177	IBC, FL, LA	
									3 1/2 x 5 1/2	14,445	12,425	0.172			

1. HDU14 requires heavy-hex anchor nut to achieve tabulated loads (supplied with holdown).

2. HDU14 loads on 4x6 post are applicable to installation on either the narrow or the wide face of the post.

3. Fasteners: Nail dimensions are listed diameter by length. SD and SDS screws are Simpson Strong-Tie® Strong Drive SD Connector and SDS Heavy-Duty Connector screws. See pp. 21-22 for fastener information.

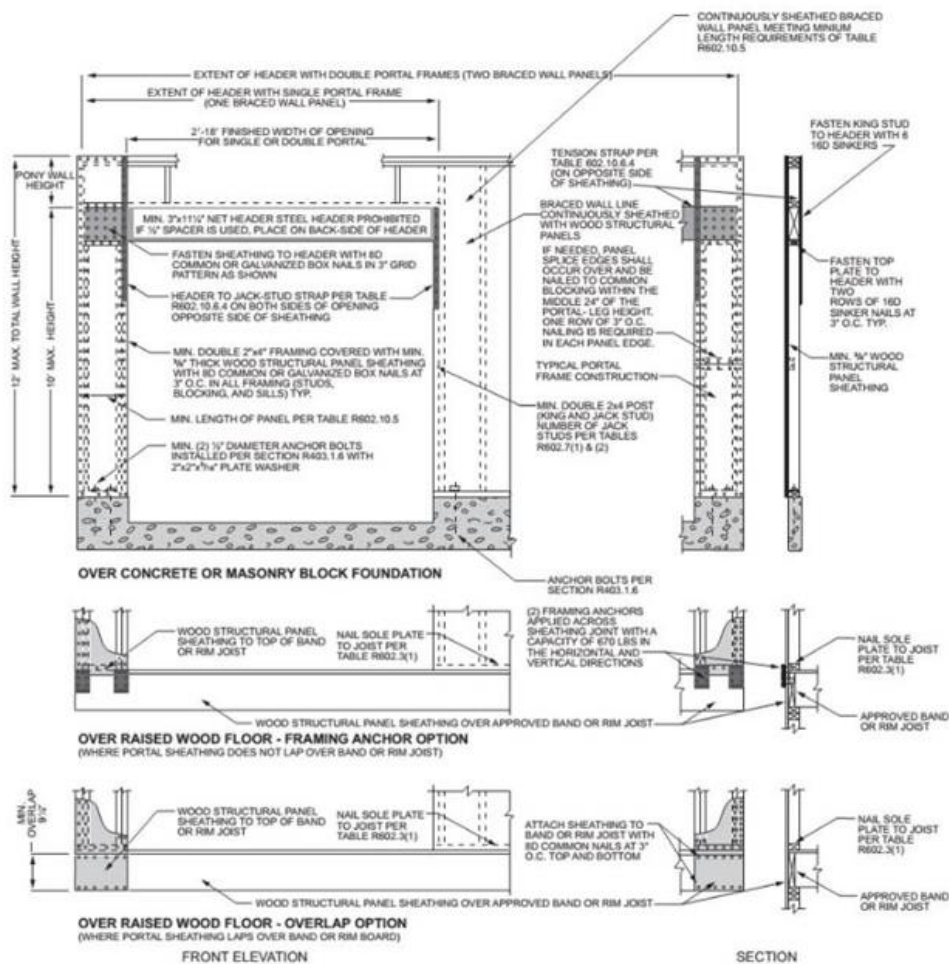


FIGURE R602.10.6.4 METHOD CS-PF—CONTINUOUSLY SHEATHED PORTAL FRAME PANEL CONSTRUCTION

Sincerely,

Bradley Huxol, PE

