

1

2

3

4

GENERAL STRUCTURAL NOTES

APPLY UNLESS NOTED ON DRAWINGS. IN CASE OF CONFLICT BETWEEN GSN, DETAILS AND PLANS, THE GREATER REQUIREMENTS GOVERN.

DESIGN INFORMATION:

BOOTH AND EQUIPMENT HAS BEEN DESIGNED BASED ON THE CURRENT EDITION OF THE INTERNATIONAL BUILDING CODE

RISK CATEGORY: II
SEISMIC IMPORTANCE FACTOR: IE=1
MAPPED SPECTRAL RESPONSE ACCELERATION:
Ss =0.100
S1 =0.068
SITE CLASS: D (ASSUMED)
SPECTRAL RESPONSE COEFFICIENT:
Sds=0.107
Sd1=0.109
SEISMIC DESIGN CATEGORY: B
SEISMIC-FORCE-RESISTING SYSTEMS:
STEEL SYSTEMS NOT SPECIFICALLY DETAILED FOR SEISMIC RESISTANCE, EXCLUDING CANTILEVER COLUMN SYSTEMS
RESPONSE MODIFICATION FACTOR: R=3
SEISMIC RESPONSE COEFFICIENT: Cs=0.036
LIGHT-FRAMED WALLS WITH SHEAR PANELS OF ALL OTHER MATERIALS
RESPONSE MODIFICATION FACTOR: R=2
SEISMIC RESPONSE COEFFICIENT: Cs=0.054
ANALYSIS PROCEDURE USED:
EQUIVALENT LATERAL FORCE PROCEDURE
BASIC WIND SPEED: 109 MPH
(PORTIONS OF EQUIPMENT THAT IS OUTDOOR ONLY - IE STACKS AND STANDS)
BUILDING CATEGORY: INDOOR
EXPOSURE: C
LATERAL LIVE LOAD: 5 PSF
DEAD LOADS: SELF-WEIGHT OF STRUCTURAL STEEL
- 3.2 PSF (ROOF)
- 5.7 PSF (WALLS)
- 2.5 PSF (PLENUM)
BOOTH ROOF LIVE LOADS: N/A PSF
LIVE LOADS: 300 LBS AT MIDPOINT OF FRAME BEAM

FOUNDATION INFORMATION:

CAPACITY OF THE FOUNDATION/SLAB TO SUPPORT GFS BOOTHS AND EQUIPMENT IS NOT THE RESPONSIBILITY OF GFS.

ANCHORS INDICATED ARE BASED ON ASSUMPTIONS OF EXISTING CONDITIONS (LISTED BELOW). THESE ASSUMPTIONS ARE MADE IN ORDER FOR GFS TO PROVIDE ANCHOR BOLT HOLES IN THE BASE PLATES AND PANELS. EXISTING CONDITIONS SHOULD BE VERIFIED BY THE OWNER AND ANY DEVIATIONS SHOULD BE CONVEYED TO GFS PRIOR TO FABRICATION.

1/4"Ø SCREW ANCHOR - 1/4"Ø POWERS (DEWALT) SCREW-BOLT+ SCREW ANCHORS EMBEDDED 1 15/16" PER ICC ESR-3889 TO SECURE PANELS TO CONCRETE. IN LIEU OF THE POWERS (DEWALT) ANCHOR, 1/4"Ø HILTI KWIK HUS-EZ SCREW ANCHORS EMBEDDED 1 15/16" PER ICC ESR-3027 MAY BE USED. EACH WALL/BAY IS REQUIRED TO HAVE ANCHORS AT 18" O.C. MAX, UNLESS NOTED OTHERWISE. EACH WALL SHALL HAVE (1) ANCHOR 6" MAXIMUM FROM END OR CORNER AND A MINIMUM OF (2) ANCHOR PER WALL/BAY. INSTALL ANCHORS PER MANUFACTURER'S RECOMMENDATION. SEE DETAILS FOR ADDITIONAL INFORMATION. A PREAPPROVED ANCHOR WITH A CAPACITY EQUAL TO OR GREATER THAN THE SPECIFIED ANCHOR AND WITH A CURRENT ICC REPORT MAY BE USED IN LIEU OF THE ANCHOR SPECIFIED. ALL OTHER RESTRICTIONS (INCLUDING BUT NOT LIMITED TO EDGE DISTANCE AND EMBEDMENT) SHALL BE CONSIDERED.

3/8"Ø WEDGE ANCHOR - 3/8"Ø POWERS (DEWALT) POWER-STUD+ SD1 WEDGE ANCHORS EMBEDDED 2" MINIMUM PER ICC ESR-2818. FOR OUTDOOR USE, USE 3/8"Ø POWERS (DEWALT) POWER-STUD+ SD4 WEDGE ANCHORS EMBEDDED 2" MINIMUM PER ICC ESR-2502. IN LIEU OF THE POWERS (DEWALT) ANCHOR, 3/8"Ø HILTI KWIK BOLT TZ WEDGE ANCHORS EMBEDDED 2" MINIMUM PER ICC ESR-1917 MAY BE USED. STAINLESS STEEL HILTI KWIK BOLT TZ SHALL BE USED FOR OUTDOOR CONDITIONS. SEE DETAILS FOR NUMBER OF ANCHORS REQUIRED AND ADDITIONAL INFORMATION. INSTALL ANCHORS PER MANUFACTURER'S RECOMMENDATION. A PREAPPROVED ANCHOR WITH A CAPACITY EQUAL TO OR GREATER THAN THE SPECIFIED ANCHOR AND WITH A CURRENT ICC REPORT MAY BE USED IN LIEU OF THE ANCHOR SPECIFIED. ALL OTHER RESTRICTIONS (INCLUDING BUT NOT LIMITED TO EDGE DISTANCE AND EMBEDMENT) SHALL BE CONSIDERED.

ANCHOR SPECIFICATION IS BASED ON THE FOLLOWING ASSUMPTIONS OF EXISTING CONDITIONS:
-- MINIMUM CONCRETE COMPRESSIVE STRENGTH IS 2500 PSI.
-- MINIMUM SLAB DEPTH IS 4".
-- MINIMUM SLAB DEPTH FOR PAINT KITCHEN IS 6".

COLD-FORMED STEEL:

ALL COLD-FORMED STEEL MEETS THE REQUIREMENTS OF THE LATEST EDITION OF THE AISI SPECIFICATION FOR THE DESIGN OF COLD-FORMED STEEL STRUCTURAL MEMBERS. ALL COLD-FORMED STEEL IS COMMERCIAL GRADE WITH A YIELD STRENGTH OF 24 KSI AND AN ULTIMATE STRENGTH OF 40 KSI.

STRUCTURAL STEEL:

ALL STRUCTURAL STEEL FABRICATION AND CONSTRUCTION COMPLY WITH THE LATEST AISC HANDBOOKS AND CODES. ALL STEEL IS ASTM A36, EXCEPT AS FOLLOWS:
-- WIDE FLANGE SECTIONS - ASTM A992,
-- PIPE SECTIONS - ASTM A53 GRADE B,
-- HSS SECTIONS - ASTM A500 GRADE B
-- BOLTS ARE A325-N AND SHALL BE SNUG-TIGHTENED.

WELDING:

WELDERS HOLD CURRENT VALID CERTIFICATES AND HAVE CURRENT EXPERIENCE IN TYPE OF WELD CALLED FOR. STRUCTURAL STEEL WELDING WITH LOW HYDROGEN TYPE, E70 AND E60 FOR LIGHT GAUGE STEEL. STRUCTURAL STEEL WELDING CONFORMS TO THE "STRUCTURAL WELDING CODES-STEEL" AWS D1.1, CURRENT EDITION.

GLOBAl FINISHING SOLUTIONS
12731 NORWAY ROAD
OSSEO, WI 54758 USA
800-848-8738
globalfinishing.com

STATE OF MISSOURI
DANIEL M
GEORGI
NUMBER
PE-2017014332
PROFESSIONAL NUMBER
10/18/2021

Civil #E-201806021 ENGINEERING
NOT VALID TO THE PRACTICE OF
ENGINEERING WITHOUT
LIABILITY TO THE PROFESSIONAL
MEMBER
GEOGRAPHIC JURISDICTION LIMITED TO
MISSOURI

SCALE
NTS
DRAWN BY
DAT
DATE
10/13/2021
REVIEW BY
DAT
REVIEW DATE
10/13/2021

MODEL INFO
GSN-NOTES
GENERAL STRUCTURAL NOTES

SHIP TO
CRASH CHAMPIONS LEE'S SUMMIT
451 SE OLDHAM PKWY
LEE'S SUMMIT, MO 64081

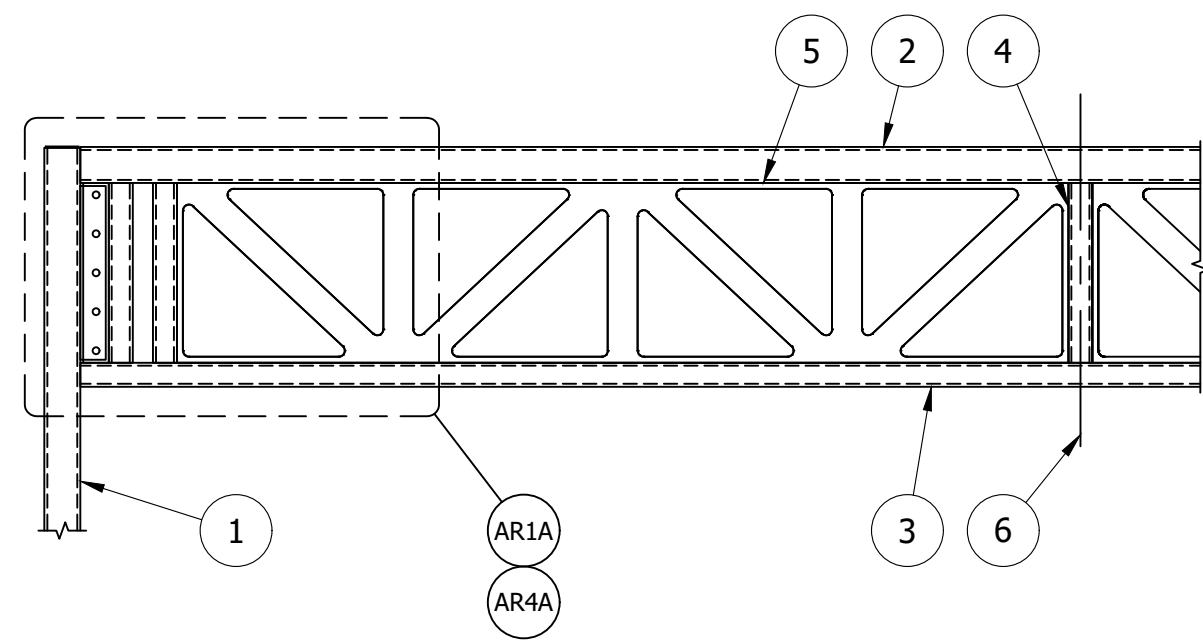
SOLD TO
CRASH CHAMPIONS
601 OAKMONT LN, SUITE 400
WESTMONT, IL 60559

ORDER/SERIAL NUMBER
U132448

DRAWING SET
SD

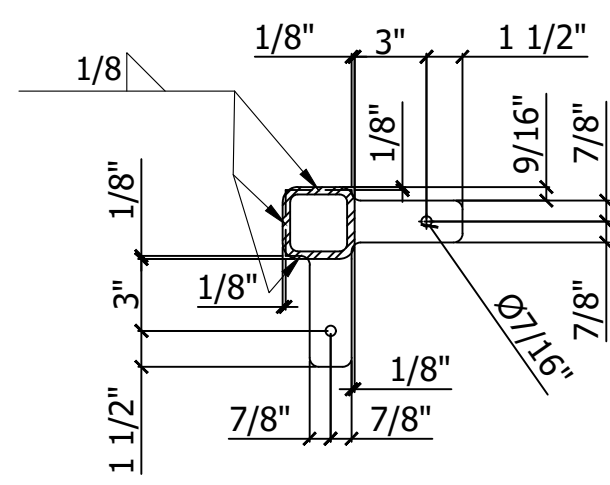
REVISION
A

DRAWING
GSN-NOTES

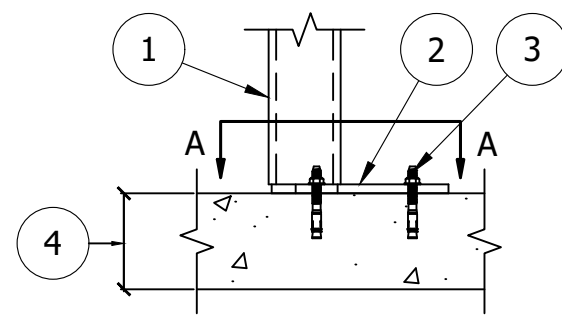


AR8A 12' TO 16' LONG FRAME ELEVATION
U132448-A

1. STEEL COLUMN - HSS3x3x5/16.
2. TRUSS TOP CHORD - HSS3x2x1/8.
3. TRUSS BOTTOM CHORD - HSS2x2x1/8.
4. VERTICAL TUBE WEB MEMBER - HSS2x2x1/4.
5. CUT OUT PLATE STEEL WEB - 3/8" THICKNESS.
6. SYMMETRICAL ABOUT CENTERLINE.

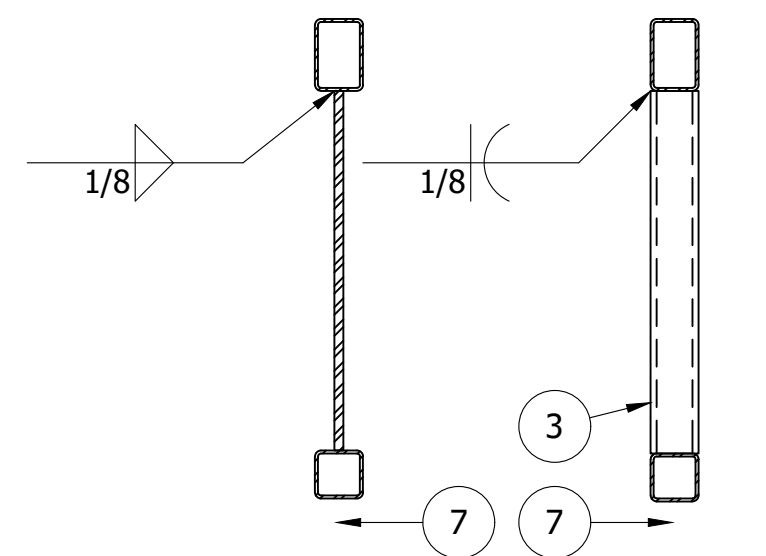


SECTION A-A



AR5A CORNER COLUMN
U132448-A

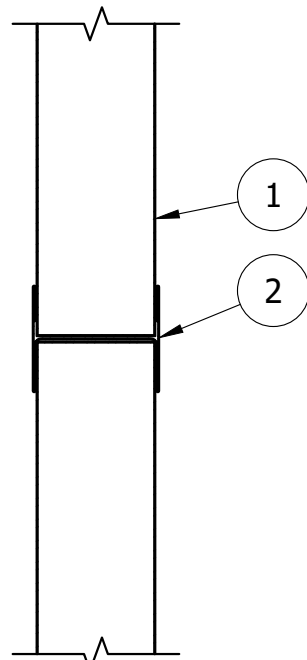
1. STEEL COLUMN PER FRAME ELEVATION (AR8A).
2. 3/8" BASE PLATE.
3. SEE 3/8"Ø WEDGE ANCHOR NOTES ON GSN.
4. EXISTING SLAB ON GRADE 4" MIN CONCRETE THICKNESS. VERIFICATION OF SLAB NOT BY GFS



SECTION A-A

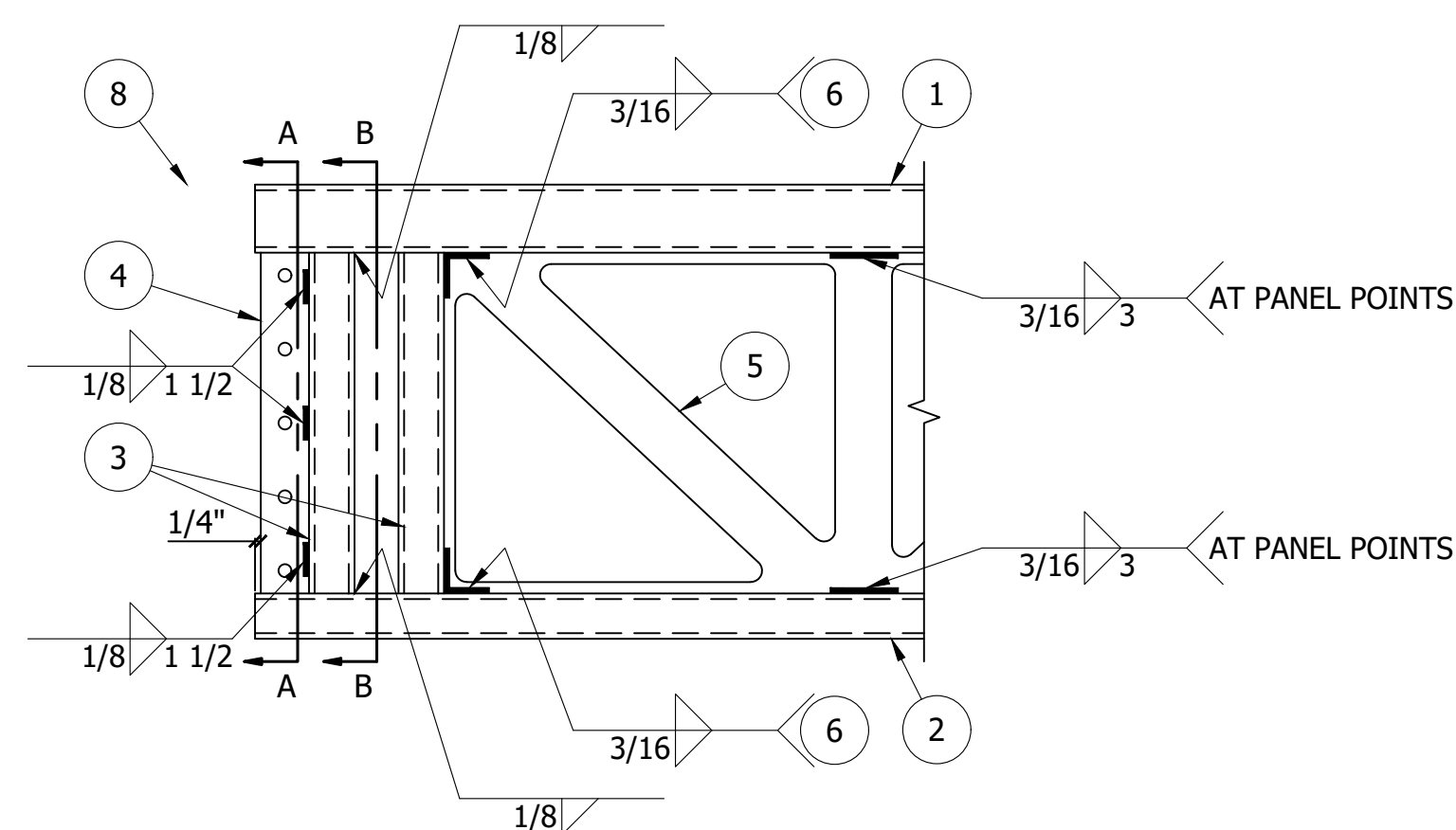
SECTION B-B

1. FRAME TOP CHORD - SEE FRAME ELEVATION FOR SIZE.
2. FRAME BOTTOM CHORD - SEE FRAME ELEVATION FOR SIZE.
3. HSS2x2x1/4 VERTICAL WEB MEMBER.
4. 3/8" PLATE WITH (5) 1/2"Ø A325-N BOLTS.
5. FRAME WEB PLATE - SEE FRAME ELEVATION FOR THICKNESS.
6. 2" LONG HORIZONTALLY FROM FRAME WEB PLATE TO CHORD AND 2" VERTICALLY FROM FRAME WEB PLATE TO VERTICAL WEB MEMBER - CONTINUOUS THROUGH CORNER.
7. SEE BOTTOM CHORD ATTACHMENT DETAIL (AR2C), IF OCCURS, FOR CONNECTION INFORMATION.
8. SEE COLUMN SHEAR TAB DETAIL (AR4A) FOR COLUMN & SHEAR TAB INFORMATION.



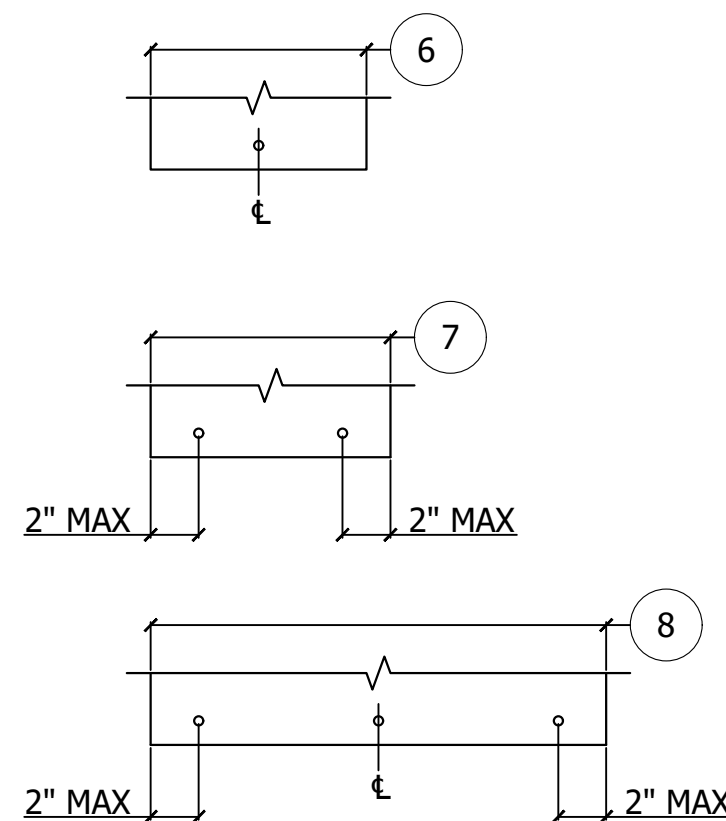
SCALE
3" = 1'-0"

1. DUAL SKIN INSULATED PANEL.
2. H-CHANNEL - 20GA.

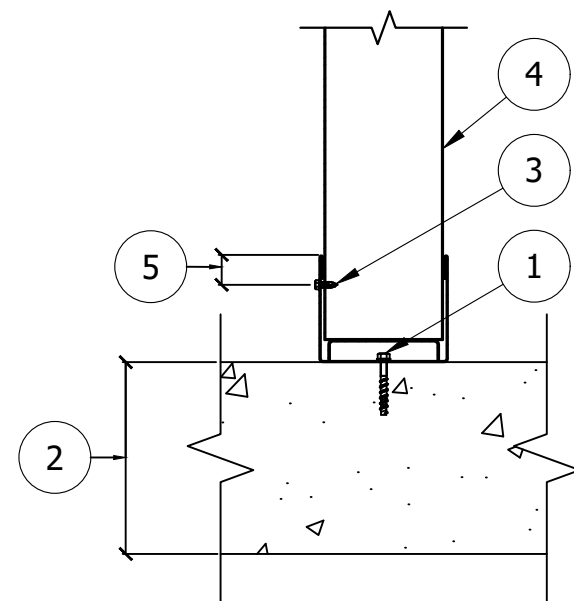


AR1A TRUSS CONNECTION TO COLUMN
U132448-A

1. SEE 1/4"Ø SCREW ANCHOR NOTES ON GSN.
2. EXISTING SLAB ON GRADE. 4" MIN CONCRETE THICKNESS. VERIFICATION OF SLAB NOT BY GFS.
3. #10 x 3/4" TEK SCREW. SEE PANEL BOTTOM ELEVATION FOR SPACING INFORMATION.
4. DUAL SKIN INSULATED PANEL.
5. 1/2" MIN - 3/4" MAX
6. 0" - 9" PANEL WIDTH.
7. 10" - 18" PANEL WIDTH.
8. 19" - 36" PANEL WIDTH.



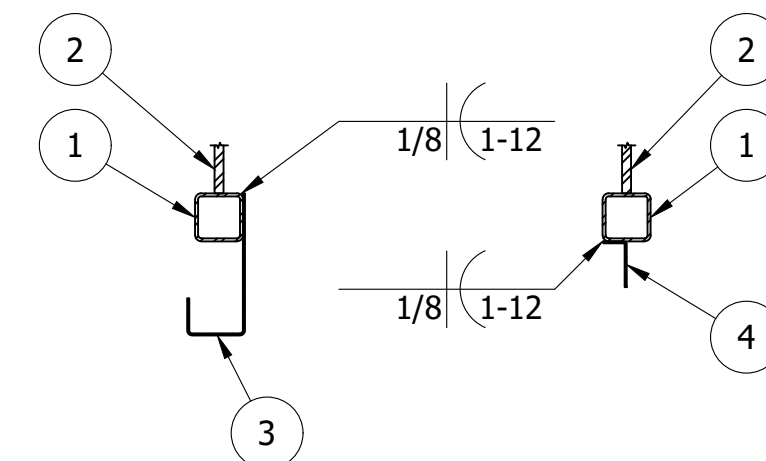
PANEL BOTTOM
ELEVATIONS



SCALE
3" = 1'-0"

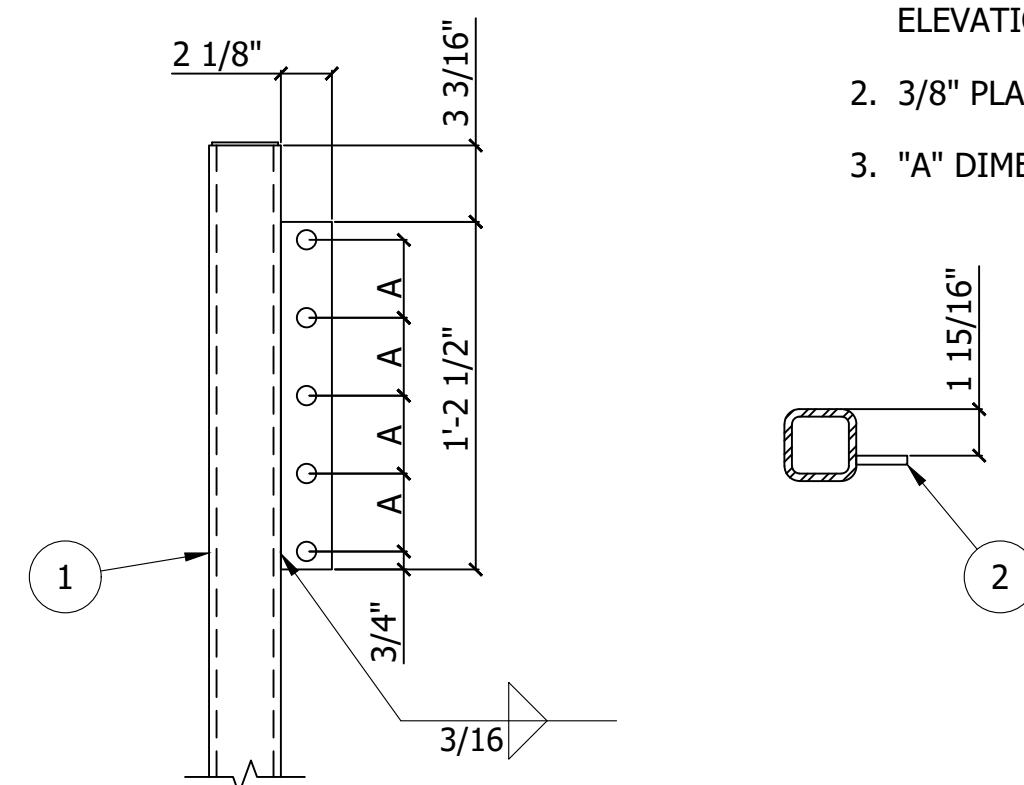
AR7 BASE CHANNEL
U132448-A,B,C

1. FRAME BOTTOM CHORD.
2. FRAME WEB PLATE.
3. 14 GA "J"
4. 14 GA "L"



AR2C **BOTTOM CHORD ATTACHMENT DETAIL**
U132448-A

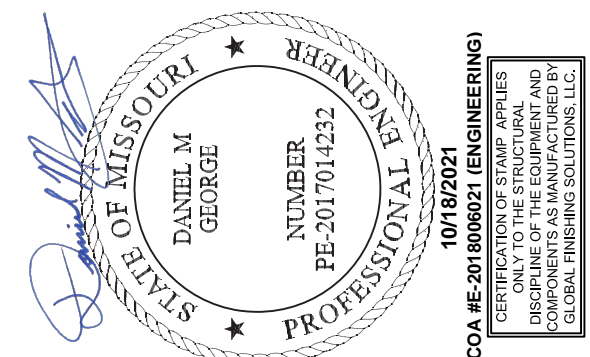
1. STEEL COLUMN - SEE FRAME ELEVATION FOR SIZE.
2. 3/8" PLATE.
3. "A" DIMENSION IS 3 1/4".



AR4A COLUMN SHEAR TAB
U132448-A

GLOBAL FINISHING SOLUTIONS
12731 NORWAY ROAD
OSSEO, WI 54758 USA
800-848-8738
globalfinishing.com

globalfinishing.com



MODEL INFO GSN-DETAILS STANDARD DETAILS		SCALE	
		NTS	
ORDER/SERIAL NUMBER U132448		DRAWN BY	
		DAT	
SOLD TO CRASH CHAMPIONS 601 OAKMONT LN, SUITE 400 WESTMONT, IL 60559		DATE	
		10/13/2021	
SHIP TO CRASH CHAMPIONS LEE'S SUMMIT 451 SE OLDHAM PKWY LEE'S SUMMIT, MO 64081		REVIEW BY	
		DAT	
DRAWING GSN-DETAILS		REVIEW DATE	
		10/13/2021	

IMPORTANT NOTE: This print and all information contained therein is the sole property of Global Finishing Solutions, LLC ("GFS"). It is not to be used or reproduced in any manner or submitted to other parties for examination without the express written approval of GFS pursuant to a fully-executed contract or purchase order for GFS-manufactured equipment. Customer may make and retain copies of this print for internal use only. Any use of this print for reproduction, distribution, sale, or otherwise without the prior written permission of GFS is strictly prohibited. The information and reference in this print for information and reference in connection with an equipment order; however, this print is not intended or represented to be suitable for re-use by customer or others on extensions of the order or on any other project. Any use without written verification is at Customer's sole risk and without warranty of any kind.

© Global Finishing Solutions, LLC (2021).

MODEL INFO		SCALE	
ULTRA XD PAINT MIX ROOM		3/8" = 1'-0"	
9'L x 12'W x 9'H, 2-SIDED		DRAWN BY	
		DAT	
		DATE	
SOLD TO		10/13/2021	
SHIP TO		REVIEW BY	
CRASH CHAMPIONS		DAT	
601 OAKMONT LN, SUITE 400		REVIEW DATE	
WESTMONT, IL 60559		10/13/2021	