



TH1



TH2-3



TH4-7



TH8



SE Oldham Parkway

Browning Street

SE Hamblen Rd



© 2022 Google



Test Hole 1:  
43' N of northern  
edge of driveway  
(4" ST IP main)

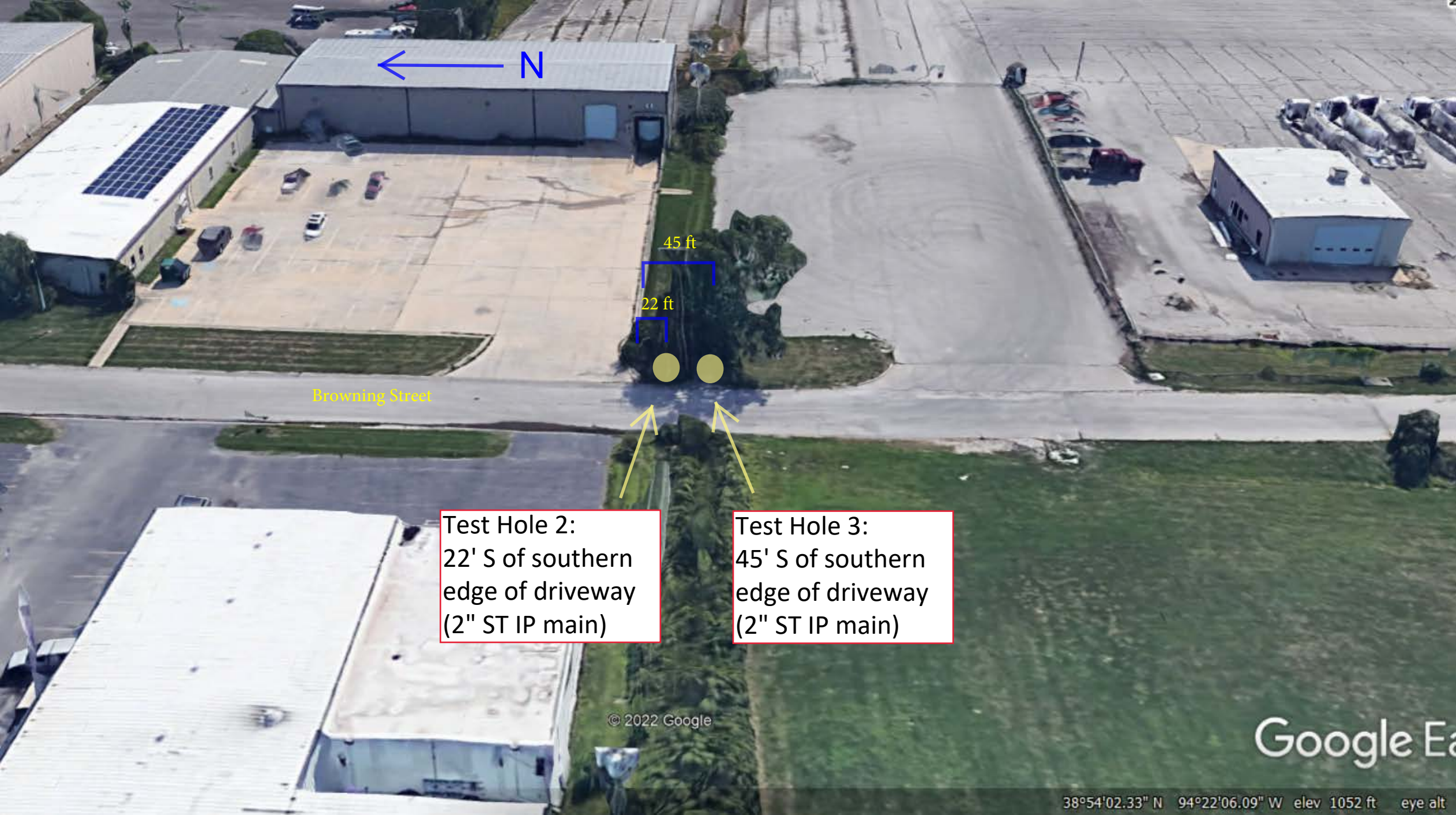
SE Oldham Parkway

43 ft

N

Browning Street

© 2022 Google



← N

45 ft

22 ft

Browning Street

Test Hole 2:  
22' S of southern  
edge of driveway  
(2" ST IP main)

Test Hole 3:  
45' S of southern  
edge of driveway  
(2" ST IP main)

© 2022 Google

Google Earth

38°54'02.33" N 94°22'06.09" W elev 1052 ft eye alt



← N

30 ft

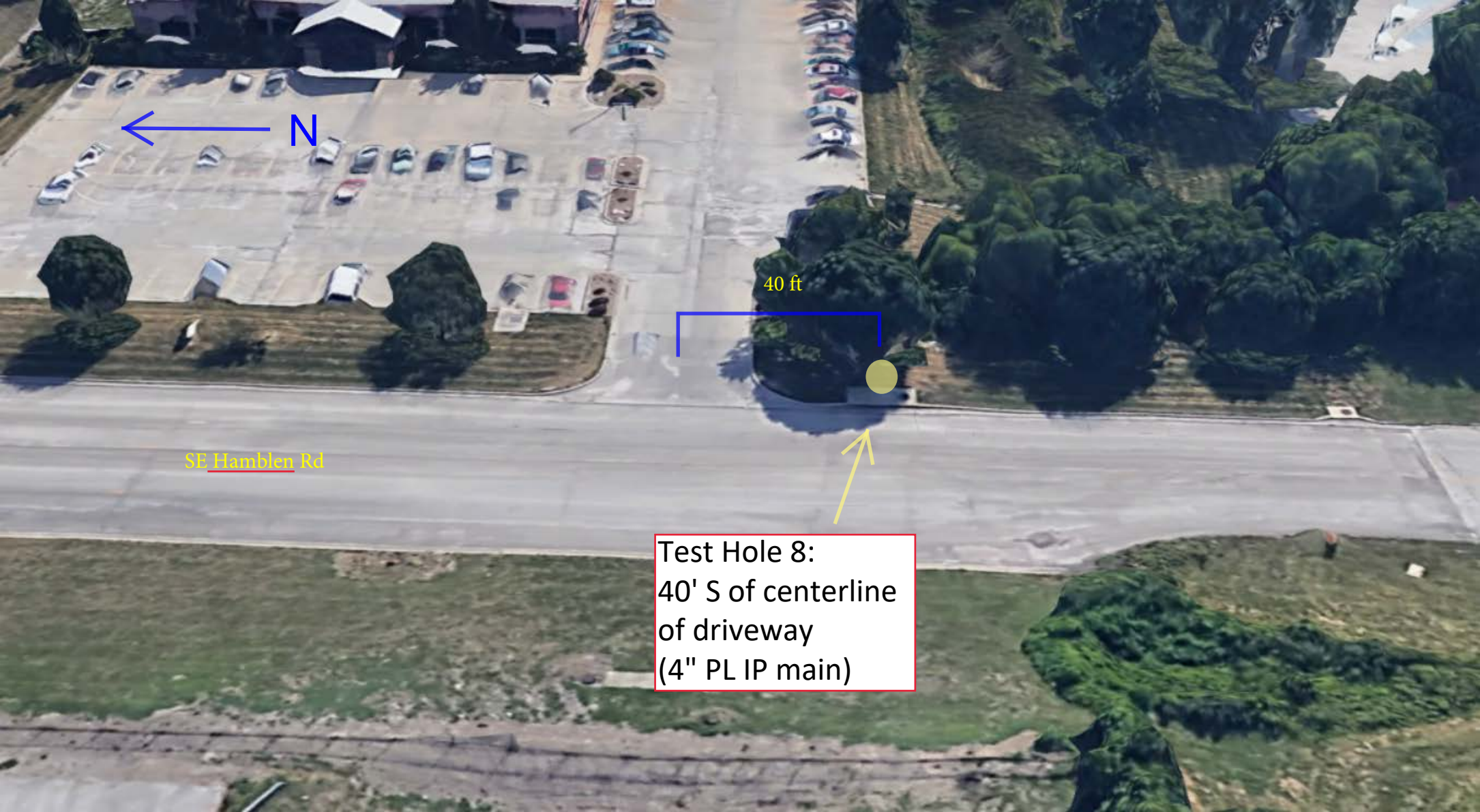
60 ft

90 ft

120 ft

Browning Street

Test Hole 4-7:  
30', 60', 90', and 120' S of  
southern edge of driveway  
(2" PL IP main)



← N

40 ft

SE Hamblen Rd

Test Hole 8:  
40' S of centerline  
of driveway  
(4" PL IP main)