

7

6

5

4

3

2

1

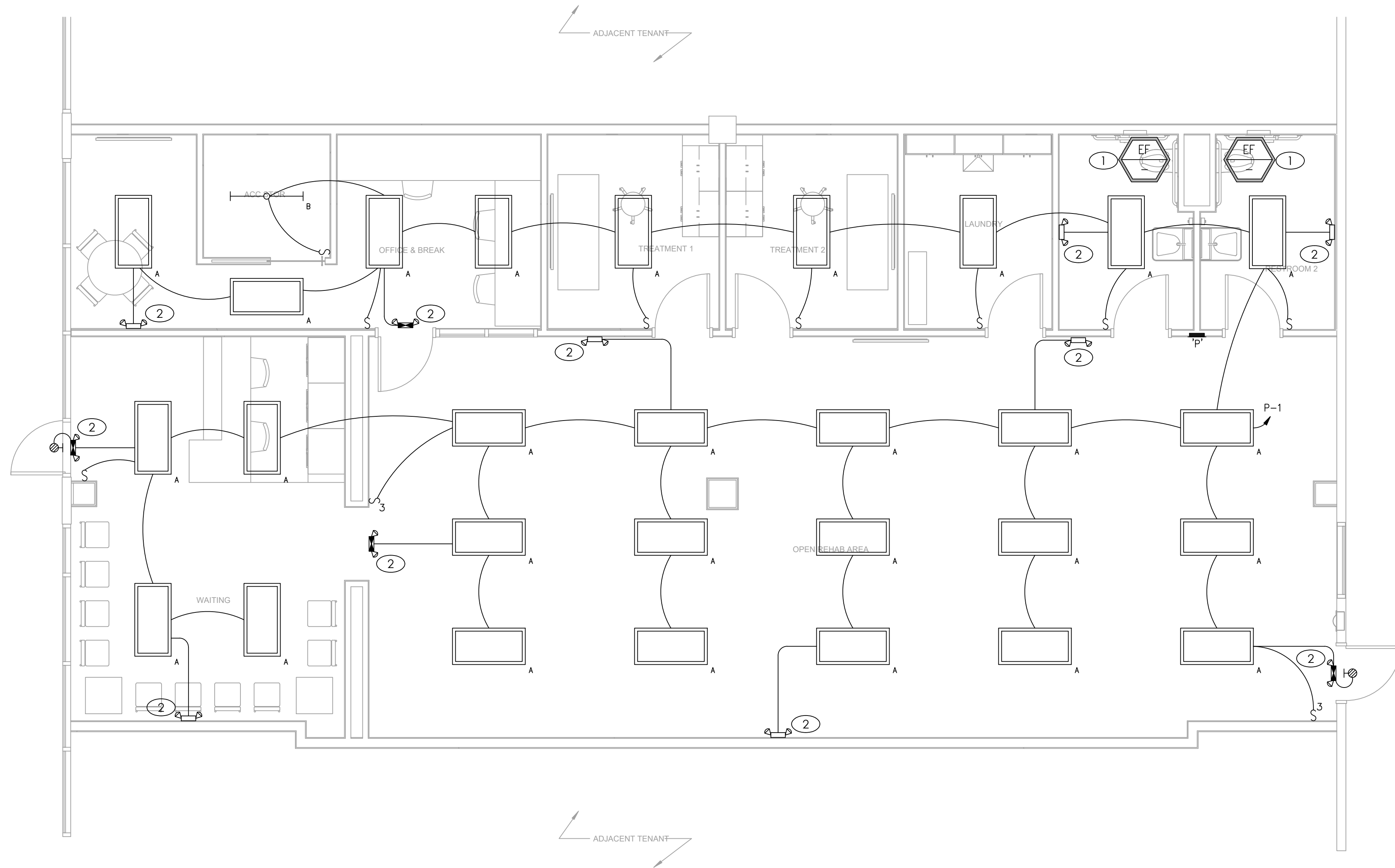
E

D

C

B

A



GENERAL NOTES

- A. REFER TO LIGHTING FIXTURE SCHEDULE FOR LIGHT FIXTURE TYPES AND REQUIREMENTS.
- B. CONNECT ALL EXIT SIGNS AND EMERGENCY LIGHTING UNITS TO THE INDICATED CIRCUIT WITH A SEPARATE AND UN-SWITCHED CONDUCTOR BYPASSING ALL CONTROLS AND CONTACTORS. REFER TO MANUFACTURER'S WRITTEN INSTRUCTIONS FOR PROPER INSTALLATION AND TESTING.
- C. CONTRACTOR SHALL BE RESPONSIBLE FOR ENSURING THAT COORDINATION AND CONFLICT ISSUES BE RESOLVED PRIOR TO INSTALLATION OF LIGHT FIXTURES.
- D. ROUTE ALL EXPOSED, RIGID CONDUIT TIGHT TO STRUCTURE, PARALLEL TO BUILDING LINES AND IN UNISTRUIT CABLE/PIPE TRAY WHERE POSSIBLE. COORDINATE CONDUIT ROUTING AND INSTALLATION WITH OTHER TRADES PRIOR TO ROUGH-IN. SUPPORT CONDUIT FROM STRUCTURE NOT ROOF DECK. MAINTAIN 2" MIN SPACING FROM BOTTOM OF ROOF DECK TO PREVENT ROOFING SCREWS FROM PENETRATING CONDUITS.
- E. THROUGH WIRING OF RECESSED LIGHT FIXTURES, IN SUSPENDED CEILINGS, IS NOT PERMITTED. CONNECT EACH LIGHT FIXTURE BY A WHIP TO A JUNCTION BOX. PROVIDE CABLE WHIPS OF SUFFICIENT LENGTH TO ALLOW FOR RELOCATING EACH LIGHT FIXTURE WITHIN A 5-FOOT RADIUS OF ITS INSTALLED LOCATION, BUT NOT EXCEEDING 6 FEET IN UNSUPPORTED LENGTH.
- F. ALL INTERNALLY ILLUMINATED SIGNS SHALL BE PROVIDED WITH AN ACCESSIBLE DISCONNECT MEANS. VERIFY EACH SIGN IS FURNISHED WITH AN INTEGRAL DISCONNECT SWITCH. PROVIDE WEATHERPROOF DISCONNECT SWITCHES WITHIN SIGHT OF ALL SIGNS AS REQUIRED. MAKE FINAL CONNECTION AS REQUIRED.

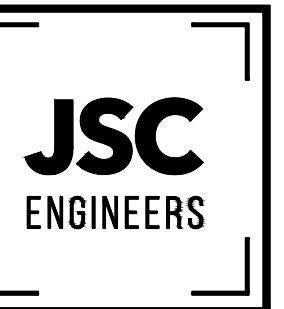
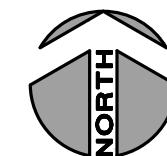
KEYED PLAN NOTES

- 1. EXHAUST FAN POWERED VIA CIRCUIT SERVING LIGHTING IN ROOM. WIRE SO THAT ON/OFF OPERATION OF FAN COORDINATES WITH LIGHTING FIXTURES.
- 2. MAKE CONNECTION TO EMERGENCY/EXIT LIGHT FIXTURE VIA UNSWITCHED HOT CONDUCTOR.

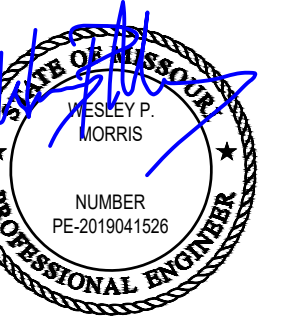
ELECTRICAL LIGHTING PLAN

SCALE: 1/4" = 1'-0"

1



MO COA NO. 2019008786 / KS COA NO. E-2818
1025 CENTRAL ST. SUITE #201
KANSAS CITY, MO 64108
phone: (816) 272-5289
email: jsmothers@jscengineers.com



05-06-2022

PRIME PHYSICAL THERAPY

1161 NE RICE RD.
LEE'S SUMMIT, MO 64064

REVISIONS: DATE / DESCRIPTION

1	
2	
3	
4	
5	

Copyright 2022
JSC Engineers

ISSUED:

PERMIT

SHEET TITLE:

ELECTRICAL PLANS

DATE: 05.06.2022

JOB NO.: 22-103

SHEET:

E1.1

7

6

5

4

3

2

1

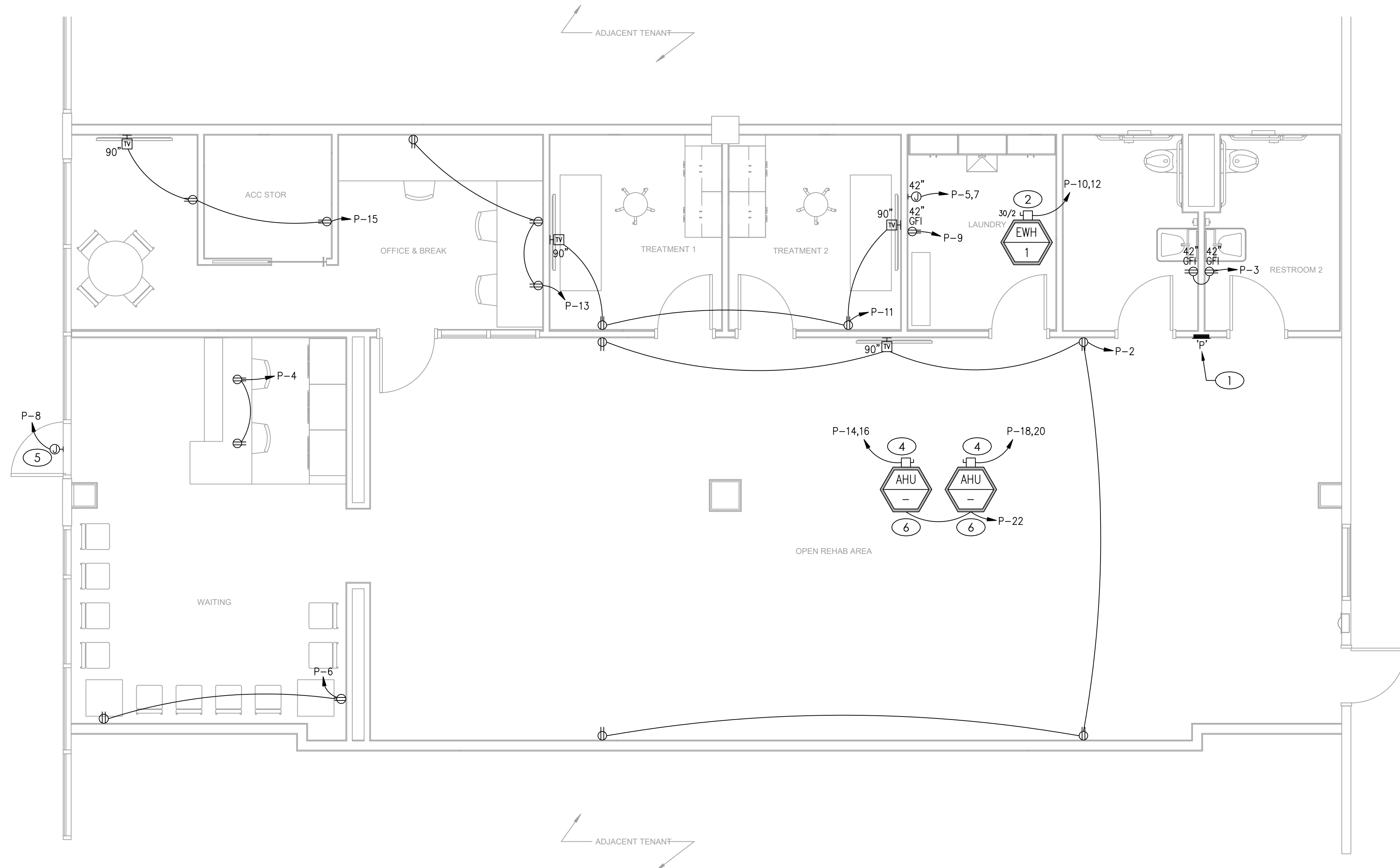
E

D

C

B

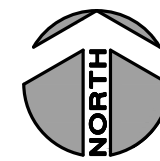
A



ELECTRICAL POWER PLAN

SCALE: 1/4" = 1'-0"

1

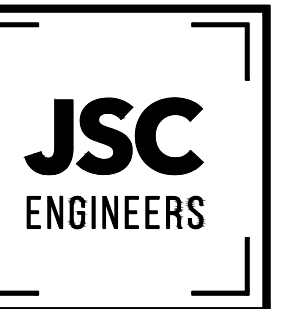


GENERAL NOTES

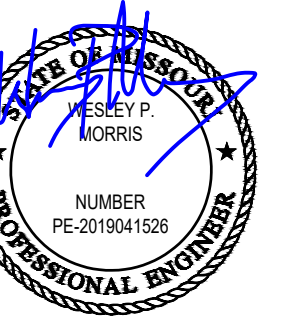
- A. REFER TO LIGHTING FIXTURE SCHEDULE FOR LIGHT FIXTURE TYPES AND REQUIREMENTS.
- B. CONNECT ALL EXIT SIGNS AND EMERGENCY LIGHTING UNITS TO THE INDICATED CIRCUIT WITH A SEPARATE AND UN-SWITCHED CONDUCTOR BYPASSING ALL CONTROLS AND CONTACTORS. REFER TO MANUFACTURER'S WRITTEN INSTRUCTIONS FOR PROPER INSTALLATION AND TESTING.
- C. CONTRACTOR SHALL BE RESPONSIBLE FOR ENSURING THAT COORDINATION AND CONFLICT ISSUES BE RESOLVED PRIOR TO INSTALLATION OF LIGHT FIXTURES.
- D. ROUTE ALL EXPOSED, RIGID CONDUIT TIGHT TO STRUCTURE, PARALLEL TO BUILDING LINES AND IN UNISTRUIT CABLE/PIPE TRAY WHERE POSSIBLE. COORDINATE CONDUIT ROUTING AND INSTALLATION WITH OTHER TRADES PRIOR TO ROUGH-IN. SUPPORT CONDUIT FROM STRUCTURE NOT ROOF DECK. MAINTAIN 2" MIN SPACING FROM BOTTOM OF ROOF DECK TO PREVENT ROOFING SCREWS FROM PENETRATING CONDUITS.
- E. THROUGH WIRING OF RECESSED LIGHT FIXTURES, IN SUSPENDED CEILINGS, IS NOT PERMITTED. CONNECT EACH LIGHT FIXTURE BY A WHIP TO A JUNCTION BOX. PROVIDE CABLE WHIPS OF SUFFICIENT LENGTH TO ALLOW FOR RELOCATING EACH LIGHT FIXTURE WITHIN A 5-FOOT RADIUS OF ITS INSTALLED LOCATION, BUT NOT EXCEEDING 6 FEET IN UNSUPPORTED LENGTH.
- F. ALL INTERNALLY ILLUMINATED SIGNS SHALL BE PROVIDED WITH AN ACCESSIBLE DISCONNECTION MEANS. VERIFY EACH SIGN IS FURNISHED WITH AN INTEGRAL DISCONNECT SWITCH. PROVIDE WEATHERPROOF DISCONNECT SWITCHES WITHIN SIGHT OF ALL SIGNS AS REQUIRED. MAKE FINAL CONNECTION AS REQUIRED.

KEYED PLAN NOTES

- 1. NEW LOCATION OF EXISTING 120/208V, 3-PHASE, 4-WIRE, 200A M.L.O PANEL 'P' THAT PREVIOUSLY SERVED THIS TENANT SPACE.
- 2. PROVIDE 30A-2P, NEMA 1 DISCONNECT SWITCH FOR ELECTRIC WATER HEATER. VERIFY EXACT LOCATION OF WATER HEATER WITH TENANT PRIOR TO INSTALLATION.
- 3. MAKE CONNECTION TO DIVISION 22/23 EQUIPMENT PER MANUFACTURER'S RECOMMENDATIONS AND NEC REQUIREMENTS. COORDINATE WORK WITH DIVISION 22/23 CONTRACTOR PRIOR TO CONSTRUCTION.
- 4. PROVIDE 60A-2P, NEMA 3R DISCONNECT SWITCH FOR AIR HANDLING UNIT. INSTALL ON SIDE OF UNIT. DO NOT INSTALL ON ACCESS PANEL. VERIFY EXACT LOCATION OF AIR HANDLING UNIT WITH TENANT PRIOR TO INSTALLATION.
- 5. EXISTING JUNCTION BOX FOR EXTERIOR SIGNAGE TO REMAIN. EXTEND CIRCUIT AS NECESSARY TO LAND HOMERUN ON BREAKER IN RELOCATED PANELBOARD LOCATION.
- 6. MAKE CONNECTION TO INTEGRAL SERVICE RECEPTACLE ON AHU. COORDINATE EXACT LOCATION AND HOMERUN ROUTING WITH MANUFACTURER'S LITERATURE PRIOR TO CONSTRUCTION.



MO COA NO. 201908786 / KS COA NO. E-2018
1025 CENTRAL ST. SUITE #201
KANSAS CITY, MO 64108
PHONE: (816) 272-5289
EMAIL: jsmith@jscengineers.com



05-06-2022

PRIME PHYSICAL THERAPY

1161 NE RICE RD.
LEE'S SUMMIT, MO 64064

REVISIONS:	DATE / DESCRIPTION
1	
2	
3	
4	
5	

Copyright 2022
JSC Engineers

ISSUED:

PERMIT

SHEET TITLE:

ELECTRICAL PLANS

DATE: 05.06.2022

JOB NO.: 22-103

SHEET:

E1.2

E

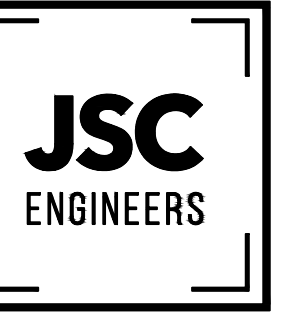
D

C

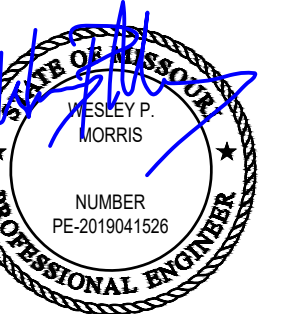
B

A

ELECTRICAL LIGHTING SCHEDULE (VERIFY ALL SELECTIONS AND FINISHES WITH OWNER AND ARCHITECT PRIOR TO ORDERING).							
FIXTURE TYPE	MANUFACTURER		VOLT AMPS	MOUNTING	LAMP TYPE	REMARKS	VOLT
	NAME	SERIES					
A	LITHONIA	EPANL 2X4	49	RECESSED	LED INCLUDED	2X4 FLAT PANEL - 5400LM OUTPUT	MVOLT
B	LITHONIA	CSS L48	35	SURFACE/PENDANT	LED INCLUDED	4' LINEAR LED STRIP LIGHT	MVOLT
	LITHONIA	ELM6L	10.6	SURFACE	INCLUDED LED	EMERGENCY LIGHTING UNIT WITH 90 MIN. BATTERY PACK	120/277
	LITHONIA	LHQM	5	SURFACE	INCLUDED LED	EMERGENCY EXIT EGRESS COMBO LIGHTING UNIT WITH RED FACE EXIT SIGN AND 90 MIN. BATTERY PACK	120/277
	LITHONIA	ERE	5	SURFACE	INCLUDED LED	OUTDOOR EMERGENCY REMOTE EGRESS LIGHTING UNIT - PROVIDE 700 LUMEN BATTERY PACK	120/277



MO COA NO. 201908786 / KS COA NO. E-2018
 1925 CENTRAL ST. SUITE #201
 KANSAS CITY, MO 64108
 phone: (816) 272-5289
 email: jsmothers@jscengineers.com



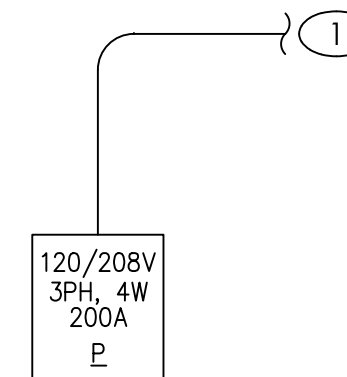
05-06-2022

PANELBOARD: P (RELOCATED)												FED FROM: METER CENTER			LINE-SIDE LUGS: MECHANICAL		
BUS AMPS: 225A												A/C RATING: 10000 FULLY RATED			EQUIPMENT GROUND BUS		
MAIN SIZE/TYPE: MLO												SERVES: PRIME PHYSICAL THERAPY					
VOLTS/PHASE: 208Y/120V, 3PH, 4W												MOUNTING: RECESSED					
SECTION: 1												LOCATION: OPEN/REHAB AREA					
CKT NO.	DESCRIPTION	VOLT AMPS/PHASE			WIRE NO.	BKR AMP	P	BKR WIRE	VOLT AMPS/PHASE			DESCRIPTION	CKT NO.				
		A	B	C					A	B	C						
1	LTG - INTERIOR	1,900			12	20	1	1	20	12	1,220			RCPT - OPEN REHAB AREA	2		
3	RCPT - RESTROOMS		360		12	20	1	1	20	12	1,000			RCPT - WAITING	4		
5	PWR - DRYER			2,184	10	30	2	1	20	12		360		RCPT - WAITING	6		
7		2,184						1	20	12	1,500			LTG - BUILDING SIGN	8		
9	RCPT - WASHING MACHINE		1,250		12	20	1	2	30	10		2,250		WATER HEATER	10		
11	RCPT - TREATMENT 1 & 2			1,360	12	20	1								12		
13	RCPT - OFFICE & BREAK	1,500			12	20	1	2	60	6	4,992			PWR - AIR HANDLING UNIT	14		
15	RCPT - STORAGE/BREAK		860		12	20	1				4,992			PWR - AIR HANDLING UNIT	16		
17	SPARE				20	1	2	45	8			3,744		PWR - AIR HANDLING UNIT	18		
19	SPARE				20	1	1							PWR - AIR HANDLING UNIT	20		
21	SPARE				20	1	1	20	12		360			RCPT - AHU MAINTENANCE	22		
23	SPARE				20	1	1	20						SPARE	24		
25	PROVISIONAL SPACE							1	1					PROVISIONAL SPACE	26		
27	PROVISIONAL SPACE							1	1					PROVISIONAL SPACE	28		
29	PROVISIONAL SPACE							1	1					PROVISIONAL SPACE	30		
31	PROVISIONAL SPACE							1	1					PROVISIONAL SPACE	32		
33	PROVISIONAL SPACE							1	1					PROVISIONAL SPACE	34		
35	PROVISIONAL SPACE							1	1					PROVISIONAL SPACE	36		
37	PROVISIONAL SPACE							1	1					PROVISIONAL SPACE	38		
39	PROVISIONAL SPACE							1	1					PROVISIONAL SPACE	40		
41	PROVISIONAL SPACE							1	1					PROVISIONAL SPACE	42		
SUBTOTAL		5,584	2,470	3,544							11,456	8,602	6,354	SUBTOTAL			
TOTAL PHASE A - VA		17,040	LOAD		CONN VA		DF	LOAD		CONN VA		DF					
AMPS		142	COOLING				0	REFRIG				1.00					
TOTAL PHASE B - VA		11,072	HEATING		17,472		1.00	SIGN/DISP				1.25					
AMPS		92	LIGHTING		3,400		1.25	KITCHEN				1.00					
TOTAL PHASE C - VA		9,898	RECEPTACLES		8,270		1.0/5	EXISTING				1.00					
AMPS		82	MOTORS				1.00	LRG MOTOR				1.25	TOTAL DEMAND				
TOTAL PNLBD - VA		38,010	SUPP HEAT				1.00	SHOW/WNDW				1.25	38,860 VA				
AMPS		106	MISC EQUIP		8,868		1.00	LTG TRACK				1.00	108 A				

PANELBOARD SCHEDULE

SCALE: NO SCALE

2



KEYED SLD NOTES

- EXTEND EXISTING CONDUIT AND SERVICE CONDUCTORS FROM EXTERIOR METER CENTER TO NEW LOCATION OF EXISTING PANEL THAT WAS RELOCATED. INSPECT CONDUIT AND SERVICE CONDUCTORS FOR DEFECTS AND REPAIR AS NECESSARY FOR COMPLETE AND OPERATIONAL SYSTEM.

ELECTRICAL SINGLE LINE DIAGRAM

SCALE: NO SCALE

1

PRIME PHYSICAL THERAPY
 1161 NE RICE RD.
 LEE'S SUMMIT, MO 64064

REVISIONS:	DATE / DESCRIPTION
1	
2	
3	
4	
5	

Copyright 2022
 JSC Engineers
 ISSUED:

PERMIT

SHEET TITLE:
 ELECTRICAL SCHEDULES & DIAGRAMS

DATE: 05.06.2022
 JOB NO.: 22-103
 SHEET:

E2.1