

CUSTOMER APPROVAL

☐ Approved

☐ Approved as Noted

☐ Not Approved
Resubmit with Changes

Print Name

Title

Signature

Date



BRAND STANDARD
REVISION DATE:

☐ All provided image elements and / or services meet the current brand revision.

☐ The following image elements and / or services do not meet the current brand standard due to municipal code and / or specific site conditions. _____

BRANDBOOK

CLIENT: PNC
LOCATION: West Pryor Development, Lot 9A
Lees Summit, MO 64086
STORE #: BAU531
DATE: 05/11/22
VARIANCE: N/A

TABLE OF CONTENTS

PAGE 1

- Cover Checklist

PAGE 2

- Cover

PAGE 3

- Site Plan

PAGE 4

- S1 Proposed

PAGE 5

- S1 Detail

PAGE 6

- S2 Proposed

PAGE 7

- S2 Detail

PAGE 8

- S3 Proposed

PAGE 9

- S3 Detail

PAGE 10

- S4 Detail

PAGE 11

- S5 Detail

PAGE 12

- S6-S7 Detail

PAGE 13

- S8-S9 Detail

PAGE 14

- S10-S11-S12 Detail

PAGE 15

- S13-S14 Detail

PAGE 16

- S15-S16 Detail

PAGE 17

- S17 Detail

PAGE 18

- S18-S19

PAGE 19

- Code Of Conduct / Safety Criteria

CONTACTS

PgM: Heather White
Email: hwhite@blairimage.com
Phone: 814-283-2020

PjM: Caleb Cox
Email: jcox@blairimage.com
Phone: 814-949-8287

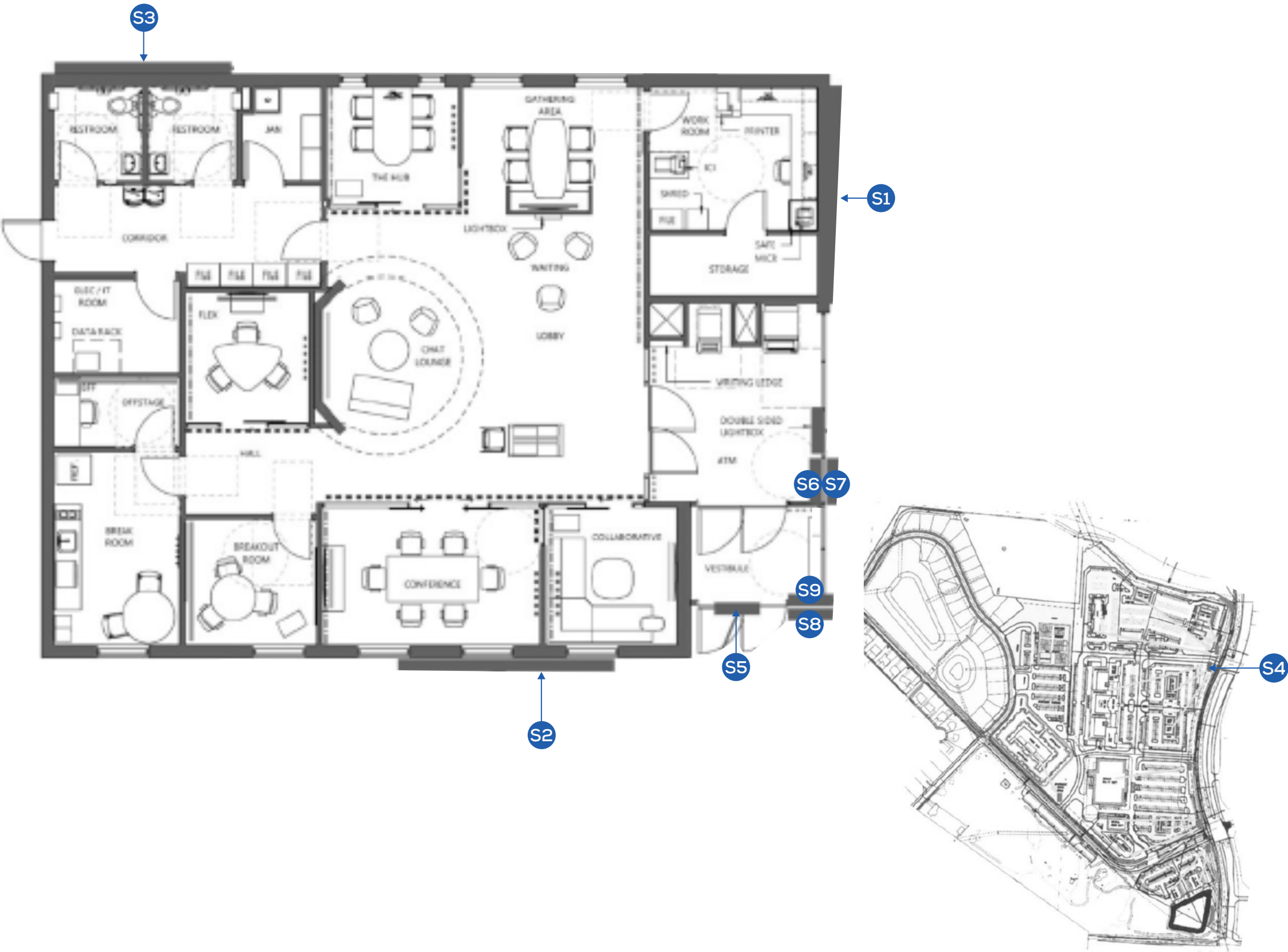
DOCUMENT INFO

BLAIR PROJECT #: 1000310
SALES ORDER # N/A
DOC #: AD-PNC-1000310-220511-1

REVISIONS

REV	DATE	DESCRIPTION
0	05/11/22	INITIAL RELEASE
1	05/12/22	ENLARGED ELEVATIONS



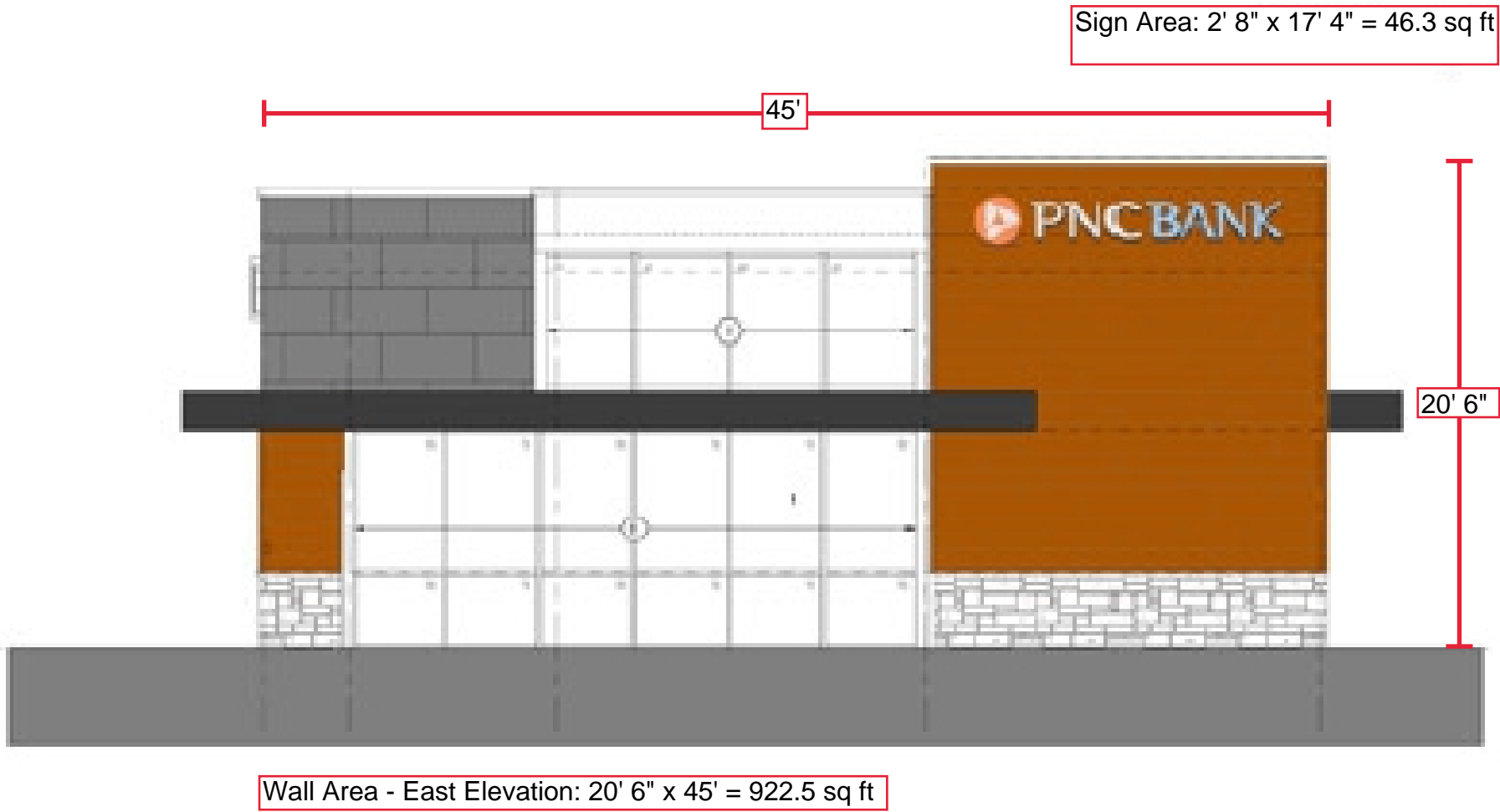


SIGN ID	DESCRIPTION	QTY
S1	24" CHANNEL LETTERS	1
S2	24" CHANNEL LETTERS	1
S3	18" CHANNEL LETTERS	1
S4	TENANT PANELS	2
S5	DOOR VINYL	1
S6	COMING SOON CONSTRUCTION VINYL	1
S7	NOW OPEN CONSTRUCTION VINYL	1
S8	CARD SWIPE MESSAGE PLAQUE	1
S9	ATM SUPPORT PLAQUE	1

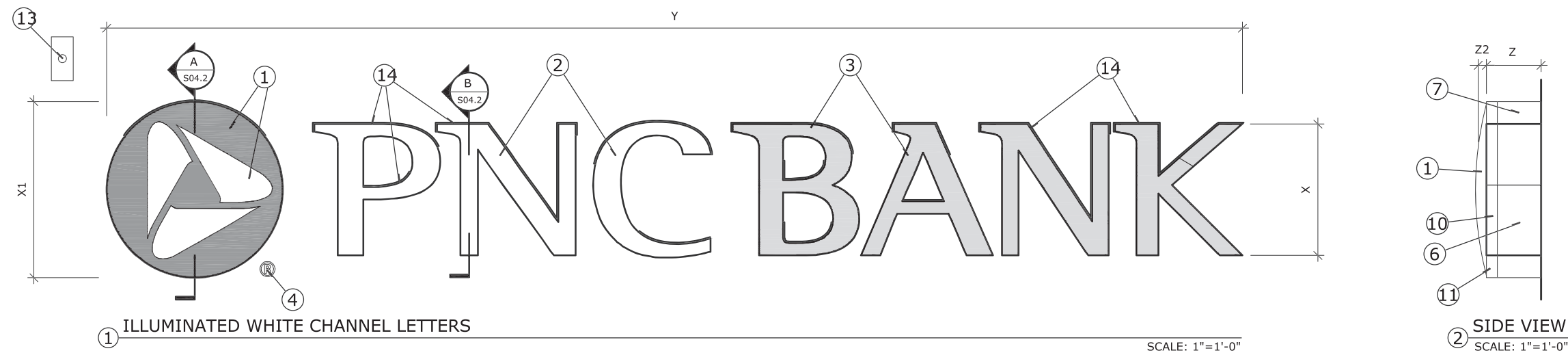
These drawings are not for construction purposes. The information contained herein is intended to express design intent only. This original design is the sole property of Blair Image Elements. It cannot be reproduced, copied or exhibited, in whole or in part, without first obtaining written consent from Blair Image Elements.

SCOPE OF WORK

- 1. 24" WHITE ILLUMINATED CHANNEL LETTERS
- 2. DIMENSIONS TO BE VERIFIED



These drawings are not for construction purposes. The information contained herein is intended to express design intent only. This original design is the sole property of Blair Image Elements. It cannot be reproduced, copied or exhibited, in whole or in part, without first obtaining written consent from Blair Image Elements.



Sign Type	X	X1	Y	Z	Z2
IL-12-W	1'-0"	1'-4 1/8"	8'-7 7/8"	5"	1"
IL-15-W	1'-3"	1'-8 1/8"	10'-9 7/8"	5"	1"
IL-18-W	1'-6"	2'-0 1/8"	12'-11 7/8"	5"	1 3/8"
IL-24-W	2'-0"	2'-8 1/8"	17'-3 3/4"	5"	1 3/4"
IL-30-W	2'-6"	3'-4 1/4"	21'-7 3/4"	5"	2 1/2"
IL-36-W	3'-0"	4'-0 1/4"	25'-11 5/8"	5"	2 3/4"

Sign Area: 2' 8" x 17' 4" = 46.3 sq ft

NOTES

- "POWERLINK" TO BE DROP FORMED .118" CLEAR IMPACT MODIFIED ACRYLIC (ACRYSTEEL OR APPROVED EQUAL). SEE CHART FOR FORMED DEPTH. SECOND SURFACE DECORATE WITH PNC TRANSLUCENT ORANGE. "ELEMENTS" OF POWERLINK TO BE DROP CUT AND DECORATED WITH PNC WHITE TRANSLUCENT FILM. 1/8" OVERLAP MAXIMUM. USE ARTWORK PROVIDED BY DESIGNER.
- "PNC" TO BE .118" WHITE TRANSLUCENT IMPACT MODIFIED ACRYLIC (ACRYSTEEL #7328 OR APPROVED EQUAL). USE ARTWORK PROVIDED BY DESIGNER.
- "BANK" TO BE .118" CLEAR IMPACT MODIFIED ACRYLIC (ACRYSTEEL OR APPROVED EQUAL). SECOND SURFACE DECORATE WITH PNC LT. BLUE TRANSLUCENT FILM. USE ARTWORK PROVIDED BY DESIGNER.
- "PNC" TO BE .25" CLEAR IMPACT MODIFIED ACRYLIC (ACRYSTEEL OR APPROVED EQUAL). FIRST SURFACE DECORATE WITH PNC BLUE DUAL COLOR FILM. SECOND SURFACE DECORATE WITH ARLON 5500-30 WHITE DIFFUSER. USE ARTWORK PROVIDED BY DESIGNER.
- TRADEMARK REGISTRATION TO BE .125" ALUMINUM PLATE. PAINT FINISH PNC BLUE. SATIN FINISH. "CIRCLE R" TO BE PNC ORANGE FILM. USE ARTWORK PROVIDED BY DESIGNER. WELD STUD SECOND SURFACE FOR WALL ATTACHMENT.
- LETTER RETURNS TO BE ALUMINUM. THICKNESS AS FOLLOWS PER CAP HEIGHTS: 12":.040", 15"-25": .050", 26"-35": .063", 36" AND LARGER: .090". PAINT FINISH EXTERIOR PNC BLUE. SATIN FINISH. PAINT FINISH INTERIOR SURFACES WITH LIGHT ENHANCEMENT PAINT.
- SYMBOL RETURNS TO BE .063" ALUMINUM UP TO 21" DIAMETER, .090" GREATER THAN 21" DIAMETER. PAINT FINISH PNC ORANGE. SATIN FINISH.
- LETTER BACKS TO BE ALUMINUM, THICKNESS AS FOLLOWS PER CAP HEIGHTS: 12": .063", 15"-35":.090", 36" AND LARGER:.125". PAINT FINISH EXTERIOR SURFACE PNC BLUE. SATIN FINISH. PAINT FINISH INTERIOR SURFACES WITH LIGHT ENHANCEMENT PAINT.
- SYMBOL BACKS TO BE .090" ALUMINUM UP TO 21" DIAMETER, .125" GREATER THAN 21" DIAMETER. PAINT FINISH EXTERIOR SURFACE PNC ORANGE. PAINT FINISH INTERIOR SURFACES WITH LIGHT ENHANCEMENT PAINT.
- LETTER TRIM CAP TO BE JEWELITE 1" BLUE. ATTACH WITH STAINLESS STEEL PAN HEAD SCREWS. PAINT HEADS TO MATCH.
- SYMBOL TRIM CAP TO BE JEWELITE 1" ORANGE PAINTED PNC ORANGE. SATIN FINISH. ATTACH WITH STAINLESS STEEL PAN HEAD SCREWS. PAINT HEADS TO MATCH.
- PROVIDE WEEP HOLES WITH LIGHT SCREENS IN EACH LETTER AND SYMBOL TO MEET U.L.
- PROVIDE SURFACE MOUNTED J-BOX FOR PHOTO CELL TO REGULATE CHANNEL LETTER OPERATION. PAINT FINISH TO MATCH EXISTING WALL SURFACE. PROVIDE PASS THRU AS REQ'D FOR ELECTRICAL FEED. DO NOT USE SURFACE CONDUIT FROM LETTERS / SYMBOL.
- USE CLEAR SILICONE CAULK TO SEAL LETTERS TO WALL AT TOP TO SEAL LETTER TO WALL TO PREVENT WATER PENETRATION. SEE SUGGESTED PLACEMENT.

GENERAL NOTES:

- ALL PAINTS TO BE TWO-PART POLY-URETHANE BY MATTHEWS. SATIN FINISH.
- ALL FILM TO BE 3M UNLESS OTHERWISE STATED.
- ALL STEEL COMPONENTS TO BE PRIMED WITH ZINC INHIBITOR (DEVCON-Z OR APPROVED EQUAL).
- ALL STRUCTURAL COMPONENTS TO BE SIZED BY A LICENSED STRUCTURAL ENGINEER TO MEET OR EXCEED ALL LOCAL, STATE, AND NATIONAL CODES.
- ALL ELECTRICAL WORK TO MEET OR EXCEED U.L. REQUIREMENTS.
- ALL EXPOSED FASTENERS TO BE PAINTED TO MATCH CABINET.
- ELECTRICAL LEADS FROM THE BACK OF ILLUMINATED LETTERS TO BE A MINIMUM OF 6'-0" LONG AS MEASURED FROM THE BACK OF THE LETTER.

MATERIAL SPECIFICATIONS:

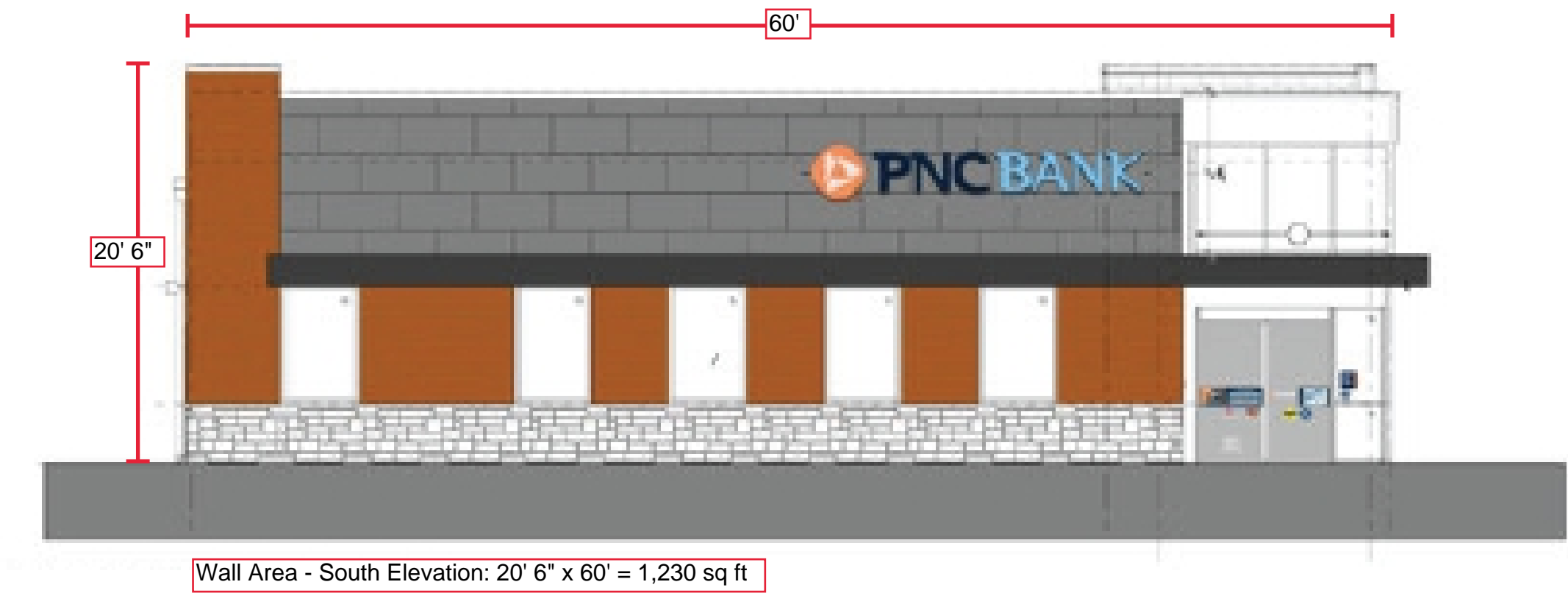
<u>PAINT:</u>	
PNC BLUE	- MATTHEWS MP31479
PNC LIGHT BLUE	- MATTHEWS MP23162
PNC ORANGE	- MATTHEWS MP01229
PNC SILVER METALLIC	- MATTHEWS MP18101
LIGHT ENHANCEMENT	- MP 74200SP ZAP WHITE
WHITE	- MP 6425SP SATIN HIGH HIDE WHITE
<u>VINYLS OPAQUE:</u>	
PNC BLUE	- 3M DN00499 DUAL COLOR (PERFORATED)
OPAQUE WHITE	- 3M 7725-10 (Door vinyl)
REFLECTIVE WHITE	- 3M 680-10
<u>VINYLS TRANSLUCENT:</u>	
PNC LIGHT BLUE	- 3M 3630-8037
PNC DARK BLUE	-3M 3630-8307
PNC ORANGE	- 3M3630-3318
TRANSLUCENT WHITE	- 3M 3630-20
DIFFUSER	- 3M 3635-30

These drawings are not for construction purposes. The information contained herein is intended to express design intent only. This original design is the sole property of Blair Image Elements. It cannot be reproduced, copied or exhibited, in whole or in part, without first obtaining written consent from Blair Image Elements.

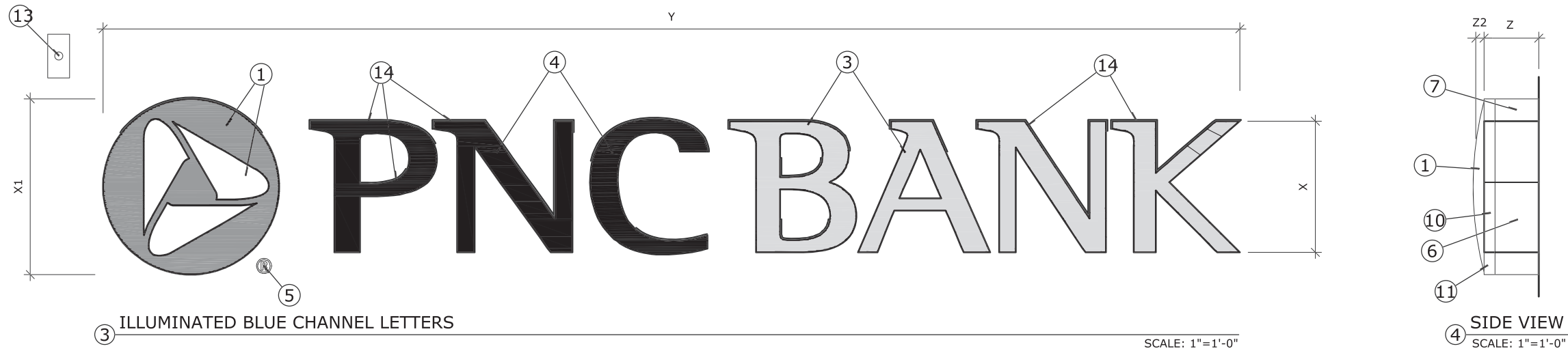
SCOPE OF WORK

- 1. 24" BLUE ILLUMINATED CHANNEL LETTERS
- 2. DIMENSIONS TO BE VERIFIED

Sign Area: 2' 8" x 17' 4" = 46.3 sq ft



These drawings are not for construction purposes. The information contained herein is intended to express design intent only. This original design is the sole property of Blair Image Elements. It cannot be reproduced, copied or exhibited, in whole or in part, without first obtaining written consent from Blair Image Elements.



③ ILLUMINATED BLUE CHANNEL LETTERS

SCALE: 1"=1'-0"

④ SIDE VIEW

SCALE: 1"=1'-0"

Sign Type	X	X1	Y	Z	Z2
IL-12-B	1'-0"	1'-4 1/8"	8'-7 7/8"	5"	1"
IL-15-B	1'-3"	1'-8 1/8"	10'-9 7/8"	5"	1"
IL-18-B	1'-6"	2'-0 1/8"	12'-11 7/8"	5"	1 3/8"
IL-24-B	2'-0"	2'-8 1/8"	17'-3 3/4"	5"	1 3/4"
IL-30-B	2'-6"	3'-4 1/4"	21'-7 3/4"	5"	2 1/2"
IL-36-B	3'-0"	4'-0 1/4"	25'-11 5/8"	5"	2 3/4"

Sign Area: 2' 8" x 17' 4" = 46.3 sq ft

NOTES

1. "POWERLINK" TO BE DROP FORMED .118" CLEAR IMPACT MODIFIED ACRYLIC (ACRYSTEEL OR APPROVED EQUAL). SEE CHART FOR FORMED DEPTH. SECOND SURFACE DECORATE WITH PNC TRANSLUCENT ORANGE. "ELEMENTS" OF POWERLINK TO BE DROP CUT AND DECORATED WITH PNC WHITE TRANSLUCENT FILM. 1/8" OVERLAP MAXIMUM. USE ARTWORK PROVIDED BY DESIGNER.
2. "PNC" TO BE .118" WHITE TRANSLUCENT IMPACT MODIFIED ACRYLIC (ACRYSTEEL #7328 OR APPROVED EQUAL). USE ARTWORK PROVIDED BY DESIGNER.
3. "BANK" TO BE .118" CLEAR IMPACT MODIFIED ACRYLIC (ACRYSTEEL OR APPROVED EQUAL). SECOND SURFACE DECORATE WITH PNC LT. BLUE TRANSLUCENT FILM. USE ARTWORK PROVIDED BY DESIGNER.
4. "PNC" TO BE .25" CLEAR IMPACT MODIFIED ACRYLIC (ACRYSTEEL OR APPROVED EQUAL). FIRST SURFACE DECORATE WITH PNC BLUE DUAL COLOR FILM. SECOND SURFACE DECORATE WITH ARLON 5500-30 WHITE DIFFUSER. USE ARTWORK PROVIDED BY DESIGNER.
5. TRADEMARK REGISTRATION TO BE .125" ALUMINUM PLATE. PAINT FINISH PNC BLUE. SATIN FINISH. "CIRCLE R" TO BE PNC ORANGE FILM. USE ARTWORK PROVIDED BY DESIGNER. WELD STUD SECOND SURFACE FOR WALL ATTACHMENT.
6. LETTER RETURNS TO BE ALUMINUM. THICKNESS AS FOLLOWS PER CAP HEIGHTS: 12":.040", 15"-25": .050", 26"-35": .063", 36" AND LARGER: .090". PAINT FINISH EXTERIOR PNC BLUE. SATIN FINISH. PAINT FINISH INTERIOR SURFACES WITH LIGHT ENHANCEMENT PAINT.
7. SYMBOL RETURNS TO BE .063" ALUMINUM UP TO 21" DIAMETER, .090" GREATER THAN 21" DIAMETER. PAINT FINISH PNC ORANGE. SATIN FINISH.
8. LETTER BACKS TO BE ALUMINUM, THICKNESS AS FOLLOWS PER CAP HEIGHTS: 12": .063", 15"-35":.090", 36" AND LARGER:.125". PAINT FINISH EXTERIOR SURFACE PNC BLUE. SATIN FINISH. PAINT FINISH INTERIOR SURFACES WITH LIGHT ENHANCEMENT PAINT.
9. SYMBOL BACKS TO BE .090" ALUMINUM UP TO 21" DIAMETER, .125" GREATER THAN 21" DIAMETER. PAINT FINISH EXTERIOR SURFACE PNC ORANGE. PAINT FINISH INTERIOR SURFACES WITH LIGHT ENHANCEMENT PAINT.
10. LETTER TRIM CAP TO BE JEWELITE 1" BLUE. ATTACH WITH STAINLESS STEEL PAN HEAD SCREWS. PAINT HEADS TO MATCH.
11. SYMBOL TRIM CAP TO BE JEWELITE 1" ORANGE PAINTED PNC ORANGE. SATIN FINISH. ATTACH WITH STAINLESS STEEL PAN HEAD SCREWS. PAINT HEADS TO MATCH.
12. PROVIDE WEEP HOLES WITH LIGHT SCREENS IN EACH LETTER AND SYMBOL TO MEET U.L.
13. PROVIDE SURFACE MOUNTED J-BOX FOR PHOTO CELL TO REGULATE CHANNEL LETTER OPERATION. PAINT FINISH TO MATCH EXISTING WALL SURFACE. PROVIDE PASS THRU AS REQ'D FOR ELECTRICAL FEED. DO NOT USE SURFACE CONDUIT FROM LETTERS / SYMBOL.
14. USE CLEAR SILICONE CAULK TO SEAL LETTERS TO WALL AT TOP TO SEAL LETTER TO WALL TO PREVENT WATER PENETRATION. SEE SUGGESTED PLACEMENT.

GENERAL NOTES:

- ALL PAINTS TO BE TWO-PART POLY-URETHANE BY MATTHEWS. SATIN FINISH.
- ALL FILM TO BE 3M UNLESS OTHERWISE STATED.
- ALL STEEL COMPONENTS TO BE PRIMED WITH ZINC INHIBITOR (DEVCON-Z OR APPROVED EQUAL).
- ALL STRUCTURAL COMPONENTS TO BE SIZED BY A LICENSED STRUCTURAL ENGINEER TO MEET OR EXCEED ALL LOCAL, STATE, AND NATIONAL CODES.
- ALL ELECTRICAL WORK TO MEET OR EXCEED U.L. REQUIREMENTS.
- ALL EXPOSED FASTENERS TO BE PAINTED TO MATCH CABINET.
- ELECTRICAL LEADS FROM THE BACK OF ILLUMINATED LETTERS TO BE A MINIMUM OF 6'-0" LONG AS MEASURED FROM THE BACK OF THE LETTER.

MATERIAL SPECIFICATIONS:

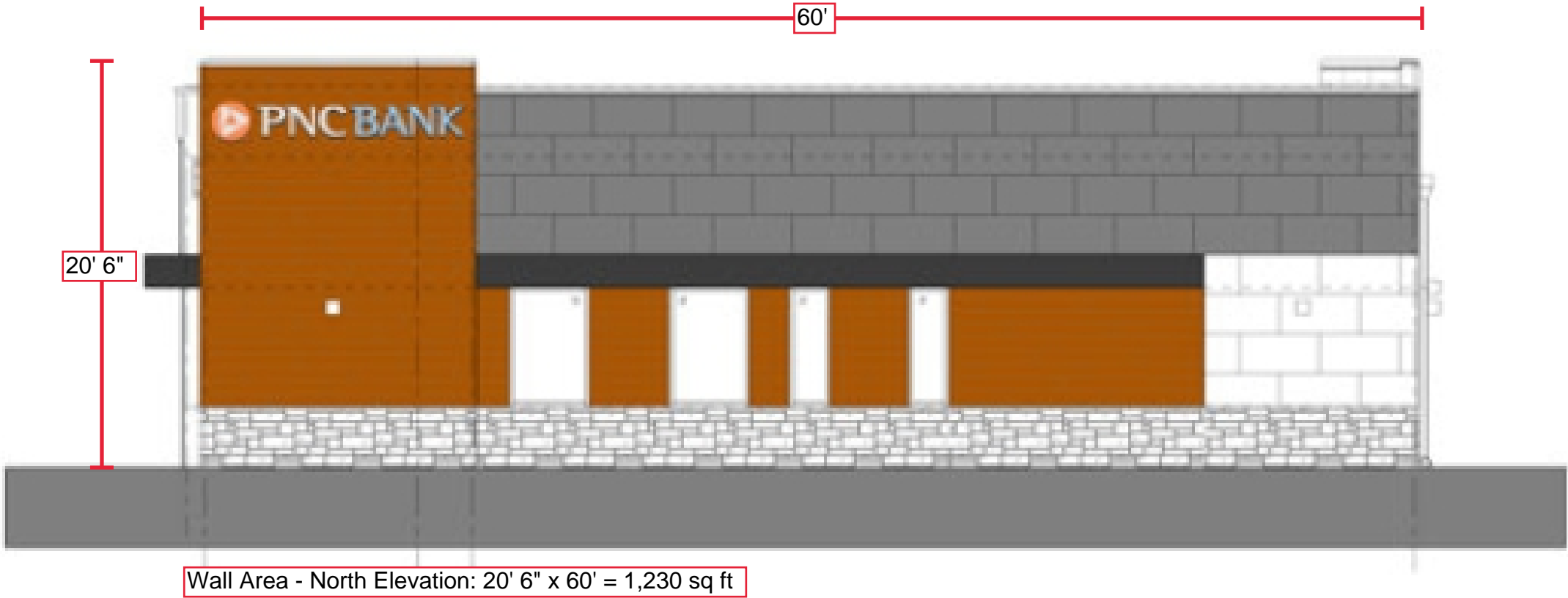
<u>PAINT:</u>	
PNC BLUE	- MATTHEWS MP31479
PNC LIGHT BLUE	- MATTHEWS MP23162
PNC ORANGE	- MATTHEWS MP01229
PNC SILVER METALLIC	- MATTHEWS MP18101
LIGHT ENHANCEMENT	- MP 74200SP ZAP WHITE
WHITE	- MP 6425SP SATIN HIGH HIDE WHITE
<u>VINYLS OPAQUE:</u>	
PNC BLUE	- 3M DN00499 DUAL COLOR (PERFORATED)
OPAQUE WHITE	- 3M 7725-10 (Door vinyl)
REFLECTIVE WHITE	- 3M 680-10
<u>VINYLS TRANSLUCENT:</u>	
PNC LIGHT BLUE	- 3M 3630-8037
PNC DARK BLUE	-3M 3630-8307
PNC ORANGE	- 3M3630-3318
TRANSLUCENT WHITE	- 3M 3630-20
DIFFUSER	- 3M 3635-30

These drawings are not for construction purposes. The information contained herein is intended to express design intent only. This original design is the sole property of Blair Image Elements. It cannot be reproduced, copied or exhibited, in whole or in part, without first obtaining written consent from Blair Image Elements.

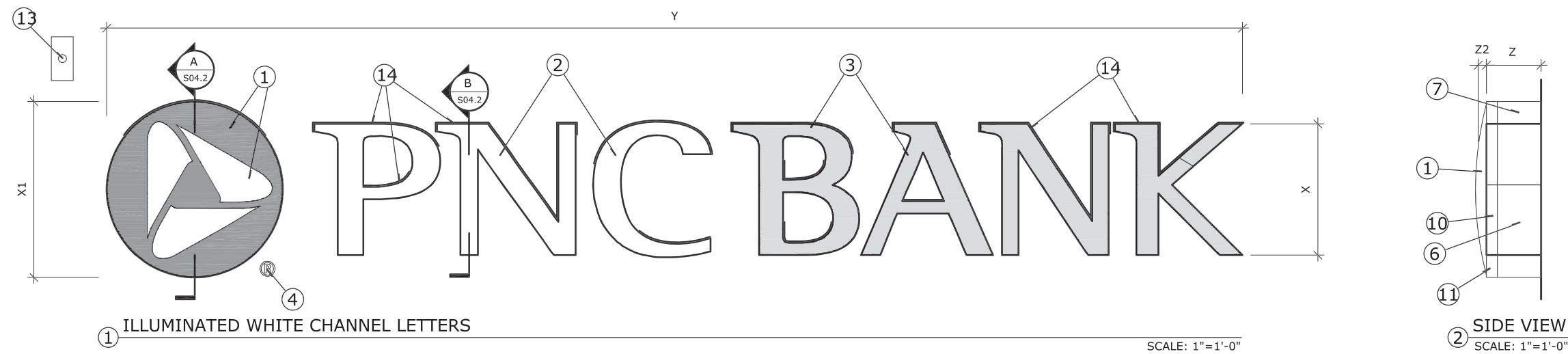
SCOPE OF WORK

- 1. 18" WHITE ILLUMINATED CHANNEL LETTERS
- 2. DIMENSIONS TO BE VERIFIED

Sign Area: 2' x 13' = 26 sq ft



These drawings are not for construction purposes. The information contained herein is intended to express design intent only. This original design is the sole property of Blair Image Elements. It cannot be reproduced, copied or exhibited, in whole or in part, without first obtaining written consent from Blair Image Elements.



Sign Type	X	X1	Y	Z	Z2
IL-12-W	1'-0"	1'-4 1/8"	8'-7 7/8"	5"	1"
IL-15-W	1'-3"	1'-8 1/8"	10'-9 7/8"	5"	1"
IL-18-W	1'-6"	2'-0 1/8"	12'-11 7/8"	5"	1 3/8"
IL-24-W	2'-0"	2'-8 1/8"	17'-3 3/4"	5"	1 3/4"
IL-30-W	2'-6"	3'-4 1/4"	21'-7 3/4"	5"	2 1/2"
IL-36-W	3'-0"	4'-0 1/4"	25'-11 5/8"	5"	2 3/4"

Sign Area: 2' x 13' = 26 sq ft

NOTES

- "POWERLINK" TO BE DROP FORMED .118" CLEAR IMPACT MODIFIED ACRYLIC (ACRYSTEEL OR APPROVED EQUAL). SEE CHART FOR FORMED DEPTH. SECOND SURFACE DECORATE WITH PNC TRANSLUCENT ORANGE. "ELEMENTS" OF POWERLINK TO BE DROP CUT AND DECORATED WITH PNC WHITE TRANSLUCENT FILM. 1/8" OVERLAP MAXIMUM. USE ARTWORK PROVIDED BY DESIGNER.
- "PNC" TO BE .118" WHITE TRANSLUCENT IMPACT MODIFIED ACRYLIC (ACRYSTEEL #7328 OR APPROVED EQUAL). USE ARTWORK PROVIDED BY DESIGNER.
- "BANK" TO BE .118" CLEAR IMPACT MODIFIED ACRYLIC (ACRYSTEEL OR APPROVED EQUAL). SECOND SURFACE DECORATE WITH PNC LT. BLUE TRANSLUCENT FILM. USE ARTWORK PROVIDED BY DESIGNER.
- "PNC" TO BE .25" CLEAR IMPACT MODIFIED ACRYLIC (ACRYSTEEL OR APPROVED EQUAL). FIRST SURFACE DECORATE WITH PNC BLUE DUAL COLOR FILM. SECOND SURFACE DECORATE WITH ARLON 5500-30 WHITE DIFFUSER. USE ARTWORK PROVIDED BY DESIGNER.
- TRADEMARK REGISTRATION TO BE .125" ALUMINUM PLATE. PAINT FINISH PNC BLUE. SATIN FINISH. "CIRCLE R" TO BE PNC ORANGE FILM. USE ARTWORK PROVIDED BY DESIGNER. WELD STUD SECOND SURFACE FOR WALL ATTACHMENT.
- LETTER RETURNS TO BE ALUMINUM. THICKNESS AS FOLLOWS PER CAP HEIGHTS: 12":.040", 15"-25": .050", 26"-35": .063", 36" AND LARGER: .090". PAINT FINISH EXTERIOR PNC BLUE. SATIN FINISH. PAINT FINISH INTERIOR SURFACES WITH LIGHT ENHANCEMENT PAINT.
- SYMBOL RETURNS TO BE .063" ALUMINUM UP TO 21" DIAMETER, .090" GREATER THAN 21" DIAMETER. PAINT FINISH PNC ORANGE. SATIN FINISH.
- LETTER BACKS TO BE ALUMINUM, THICKNESS AS FOLLOWS PER CAP HEIGHTS: 12": .063", 15"-35":.090", 36" AND LARGER:.125". PAINT FINISH EXTERIOR SURFACE PNC BLUE. SATIN FINISH. PAINT FINISH INTERIOR SURFACES WITH LIGHT ENHANCEMENT PAINT.
- SYMBOL BACKS TO BE .090" ALUMINUM UP TO 21" DIAMETER, .125" GREATER THAN 21" DIAMETER. PAINT FINISH EXTERIOR SURFACE PNC ORANGE. PAINT FINISH INTERIOR SURFACES WITH LIGHT ENHANCEMENT PAINT.
- LETTER TRIM CAP TO BE JEWELITE 1" BLUE. ATTACH WITH STAINLESS STEEL PAN HEAD SCREWS. PAINT HEADS TO MATCH.
- SYMBOL TRIM CAP TO BE JEWELITE 1" ORANGE PAINTED PNC ORANGE. SATIN FINISH. ATTACH WITH STAINLESS STEEL PAN HEAD SCREWS. PAINT HEADS TO MATCH.
- PROVIDE WEEP HOLES WITH LIGHT SCREENS IN EACH LETTER AND SYMBOL TO MEET U.L.
- PROVIDE SURFACE MOUNTED J-BOX FOR PHOTO CELL TO REGULATE CHANNEL LETTER OPERATION. PAINT FINISH TO MATCH EXISTING WALL SURFACE. PROVIDE PASS THRU AS REQ'D FOR ELECTRICAL FEED. DO NOT USE SURFACE CONDUIT FROM LETTERS / SYMBOL.
- USE CLEAR SILICONE CAULK TO SEAL LETTERS TO WALL AT TOP TO SEAL LETTER TO WALL TO PREVENT WATER PENETRATION. SEE SUGGESTED PLACEMENT.

GENERAL NOTES:

- ALL PAINTS TO BE TWO-PART POLY-URETHANE BY MATTHEWS. SATIN FINISH.
- ALL FILM TO BE 3M UNLESS OTHERWISE STATED.
- ALL STEEL COMPONENTS TO BE PRIMED WITH ZINC INHIBITOR (DEVCON-Z OR APPROVED EQUAL).
- ALL STRUCTURAL COMPONENTS TO BE SIZED BY A LICENSED STRUCTURAL ENGINEER TO MEET OR EXCEED ALL LOCAL, STATE, AND NATIONAL CODES.
- ALL ELECTRICAL WORK TO MEET OR EXCEED U.L. REQUIREMENTS.
- ALL EXPOSED FASTENERS TO BE PAINTED TO MATCH CABINET.
- ELECTRICAL LEADS FROM THE BACK OF ILLUMINATED LETTERS TO BE A MINIMUM OF 6'-0" LONG AS MEASURED FROM THE BACK OF THE LETTER.

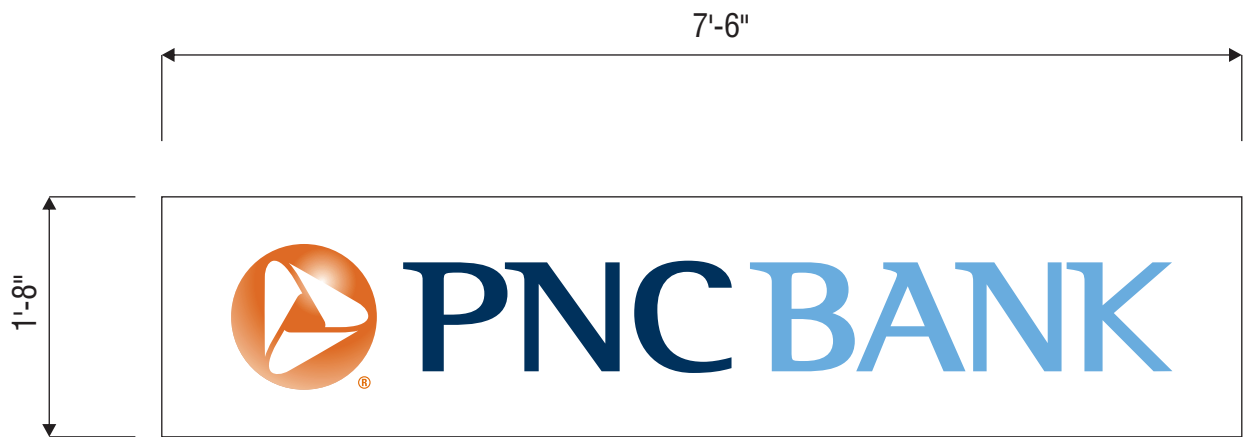
MATERIAL SPECIFICATIONS:

PAINT:	
PNC BLUE	- MATTHEWS MP31479
PNC LIGHT BLUE	- MATTHEWS MP23162
PNC ORANGE	- MATTHEWS MP01229
PNC SILVER METALLIC	- MATTHEWS MP18101
LIGHT ENHANCEMENT	- MP 74200SP ZAP WHITE
WHITE	- MP 6425SP SATIN HIGH HIDE WHITE
VINYLS OPAQUE:	
PNC BLUE	- 3M DN00499 DUAL COLOR (PERFORATED)
OPAQUE WHITE	- 3M 7725-10 (Door vinyl)
REFLECTIVE WHITE	- 3M 680-10
VINYLS TRANSLUCENT:	
PNC LIGHT BLUE	- 3M 3630-8037
PNC DARK BLUE	-3M 3630-8307
PNC ORANGE	- 3M3630-3318
TRANSLUCENT WHITE	- 3M 3630-20
DIFFUSER	- 3M 3635-30

These drawings are not for construction purposes. The information contained herein is intended to express design intent only. This original design is the sole property of Blair Image Elements. It cannot be reproduced, copied or exhibited, in whole or in part, without first obtaining written consent from Blair Image Elements.

SCOPE OF WORK

- 1. TENANT PANELS FOR SHARED SIGN
- 2. DIMENSIONS TO BE VERIFIED



Sign Area: 1' 8" x 7' 6" = 12.5 sq ft

SCALE: 3/4" = 1'

These drawings are not for construction purposes. The information contained herein is intended to express design intent only. This original design is the sole property of Blair Image Elements. It cannot be reproduced, copied or exhibited, in whole or in part, without first obtaining written consent from Blair Image Elements.



PNC
West Pryor Development, Lot 9A
Lees Summit, MO 64086

STORE #
BAU531

Issue Date: 05/11/22 Drawn By: RSF		
REV	DATE	DESCRIPTION
0	05/11/22	INITIAL RELEASE
1	05/12/22	ENLARGED ELEVATIONS

S4 DETAIL

Rev: 1
Date: 05/12/22
Doc #: AD-PNC-1000310-220511-1
Blair Project #: 1000310
Blair Sales Order #: N/A

Blair Image Elements
5107 Kissell Avenue
Altoona, PA 16601
P: (814) 949.8287
blairimage.com



SCOPE OF WORK

- 1. SLIDING DOOR VINYL HOURS SYSTEM WITH MARKETING INSERTS

V-6C-01
Hours windows

4.18 sqft



Sliding Door | Exterior View

These drawings are not for construction purposes. The information contained herein is intended to express design intent only. This original design is the sole property of Blair Image Elements. It cannot be reproduced, copied or exhibited, in whole or in part, without first obtaining written consent from Blair Image Elements.



PNC
West Pryor Development, Lot 9A
Lees Summit, MO 64086

STORE #
BAU531

Issue Date: 05/11/22 Drawn By: RSF		
REV	DATE	DESCRIPTION
0	05/11/22	INITIAL RELEASE
1	05/12/22	ENLARGED ELEVATIONS

S5 DETAIL

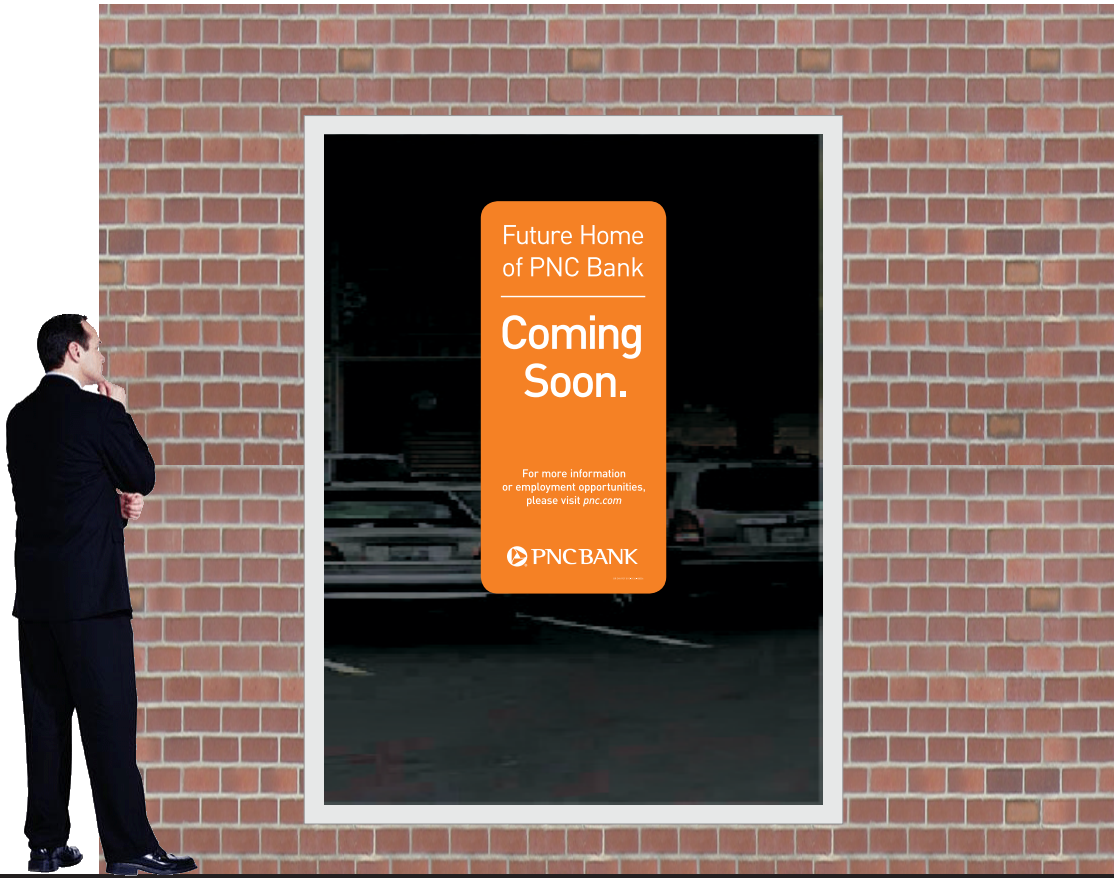
Rev: 1
Date: 05/12/22
Doc #: AD-PNC-1000310-220511-1
Blair Project #: 1000310
Blair Sales Order #: N/A

Blair Image Elements
5107 Kissell Avenue
Altoona, PA 16601
P: (814) 949.8287
blairimage.com

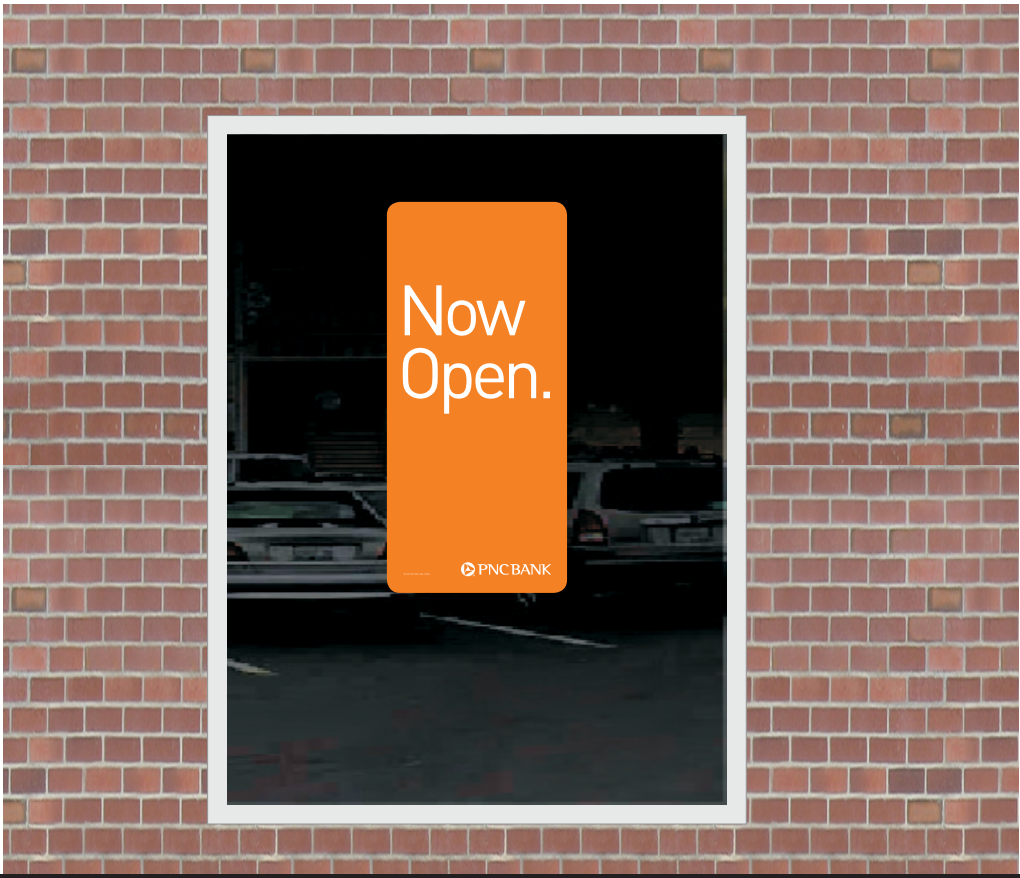


SCOPE OF WORK

- 1. COMING SOON TEMPORARY BANNER
- 2. NOW OPEN TEMPORARY BANNER



Const-33-orange
2'-0" x 4'-0" (8 sqft)
Vertical Coming Soon
Construction Window Cling



Const-33-orange
2'-0" x 4'-0" (8 sqft)
Vertical Now Open Coming Soon
Construction Window Cling

These drawings are not for construction purposes. The information contained herein is intended to express design intent only. This original design is the sole property of Blair Image Elements. It cannot be reproduced, copied or exhibited, in whole or in part, without first obtaining written consent from Blair Image Elements.



PNC
West Pryor Development, Lot 9A
Lees Summit, MO 64086

STORE #
BAU531

Issue Date: 05/11/22		
Drawn By: RSF		
REV	DATE	DESCRIPTION
0	05/11/22	INITIAL RELEASE
1	05/12/22	ENLARGED ELEVATIONS

S6-S7 DETAIL

Rev: 1
Date: 05/12/22
Doc #: AD-PNC-1000310-220511-1
Blair Project #: 1000310
Blair Sales Order #: N/A

Blair Image Elements
5107 Kissell Avenue
Altoona, PA 16601
P: (814) 949.8287
blairimage.com

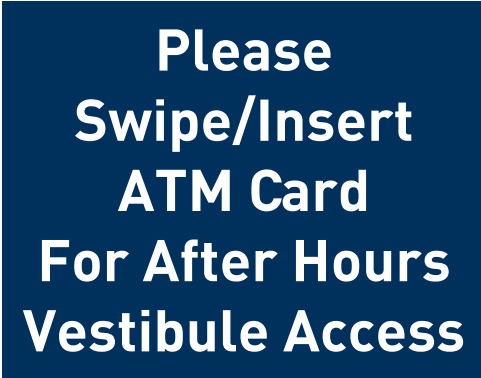


SCOPE OF WORK

- 1. ATM SUPPORT PLAQUE
- 2. CARD SWIPE MESSAGE



RW-0-ATM - Vinyl
Window Decal
1'-0" x 1'-0"
1 sqft



RW-5 - Card swipe plaque
5 1/2" x 7"
.26 sqft

These drawings are not for construction purposes. The information contained herein is intended to express design intent only. This original design is the sole property of Blair Image Elements. It cannot be reproduced, copied or exhibited, in whole or in part, without first obtaining written consent from Blair Image Elements.



PNC
West Pryor Development, Lot 9A
Lees Summit, MO 64086

STORE #
BAU531

Issue Date: 05/11/22 Drawn By: RSF		
REV	DATE	DESCRIPTION
0	05/11/22	INITIAL RELEASE
1	05/12/22	ENLARGED ELEVATIONS

S8-S9 DETAIL

Rev: 1
Date: 05/12/22
Doc #: AD-PNC-1000310-220511-1
Blair Project #: 1000310
Blair Sales Order #: N/A

Blair Image Elements
5107 Kissell Avenue
Altoona, PA 16601
P: (814) 949.8287
blairimage.com



SCOPE OF WORK

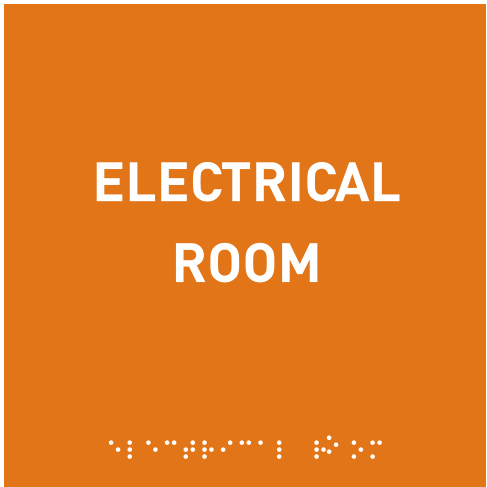
- 1. EMPLOYEES ONLY WALL PLAQUE (QTY 2)
- 2. ELECTRICAL ROOM WALL PLAQUE (QTY 1)
- 3. EMERGENCY EXIT WALL PLAQUE (QTY 3)

S10



IP-9-ADA-orange Interior Plaque
7 3/4" x 7 3/4"
QTY 2

S11

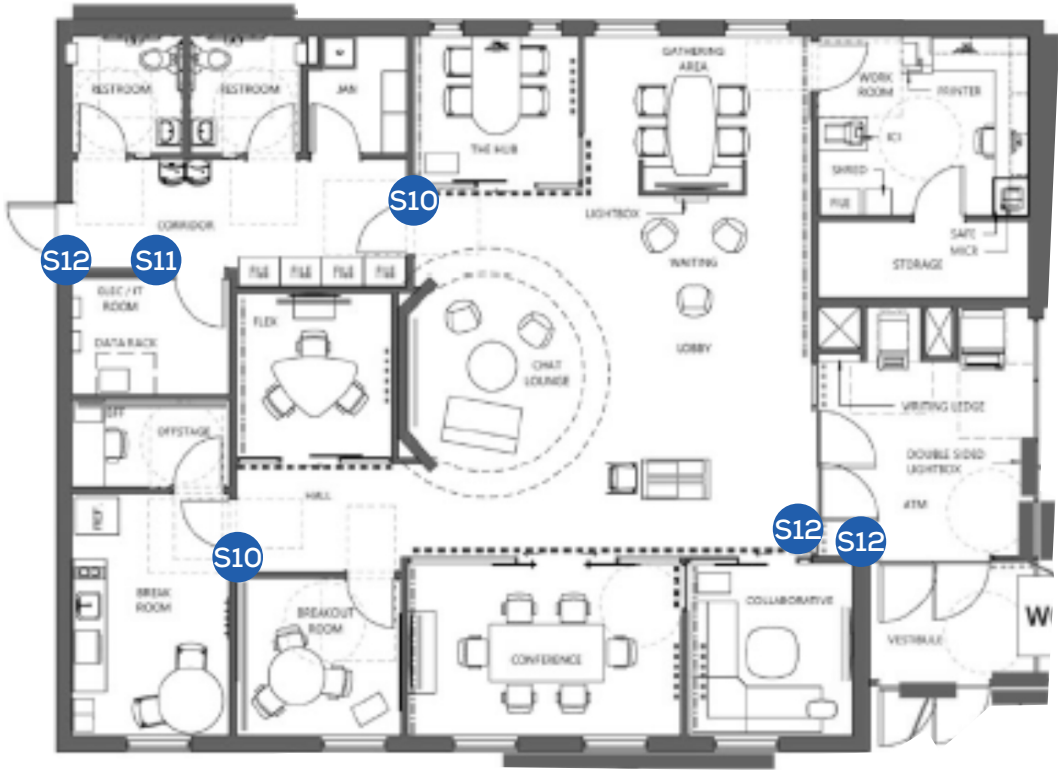


IP-10-ADA-orange Interior Plaque
7 3/4" x 7 3/4"

S12



IP-7-ADA-orange Interior Plaque
7 3/4" x 7 3/4"
QTY 3



These drawings are not for construction purposes. The information contained herein is intended to express design intent only. This original design is the sole property of Blair Image Elements. It cannot be reproduced, copied or exhibited, in whole or in part, without first obtaining written consent from Blair Image Elements.



PNC
West Pryor Development, Lot 9A
Lees Summit, MO 64086

STORE #
BAU531

Issue Date: 05/11/22 Drawn By: RSF		
REV	DATE	DESCRIPTION
0	05/11/22	INITIAL RELEASE
1	05/12/22	ENLARGED ELEVATIONS

S10-S11-S12 DETAIL

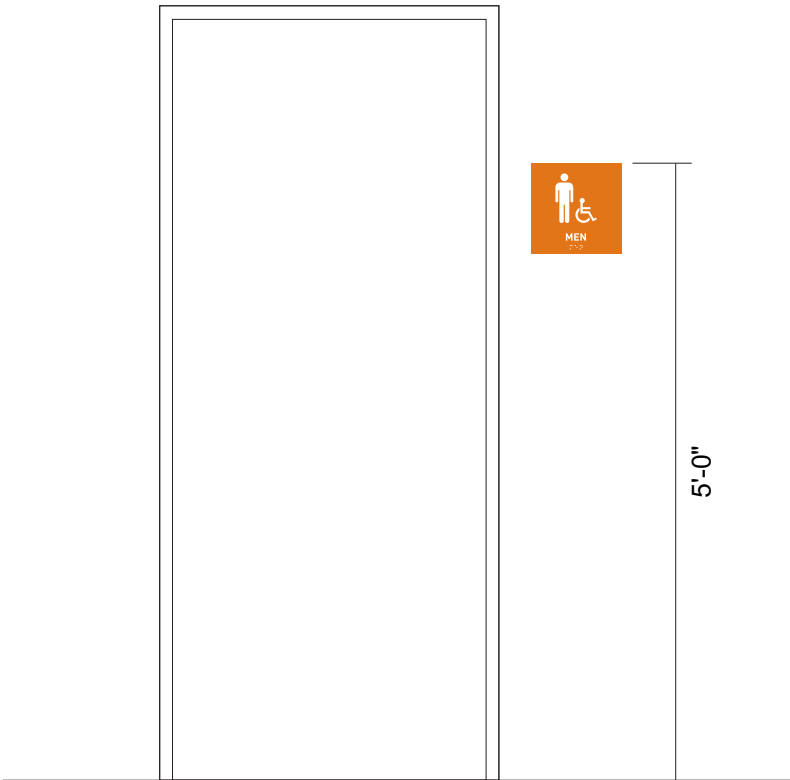
Rev: 1
Date: 05/12/22
Doc #: AD-PNC-1000310-220511-1
Blair Project #: 1000310
Blair Sales Order #: N/A

Blair Image Elements
5107 Kissell Avenue
Altoona, PA 16601
P: (814) 949.8287
blairimage.com



SCOPE OF WORK

- 1. RESTROOM PLAQUE - MEN
- 2. RESTROOM PLAQUE - WOMEN



S13

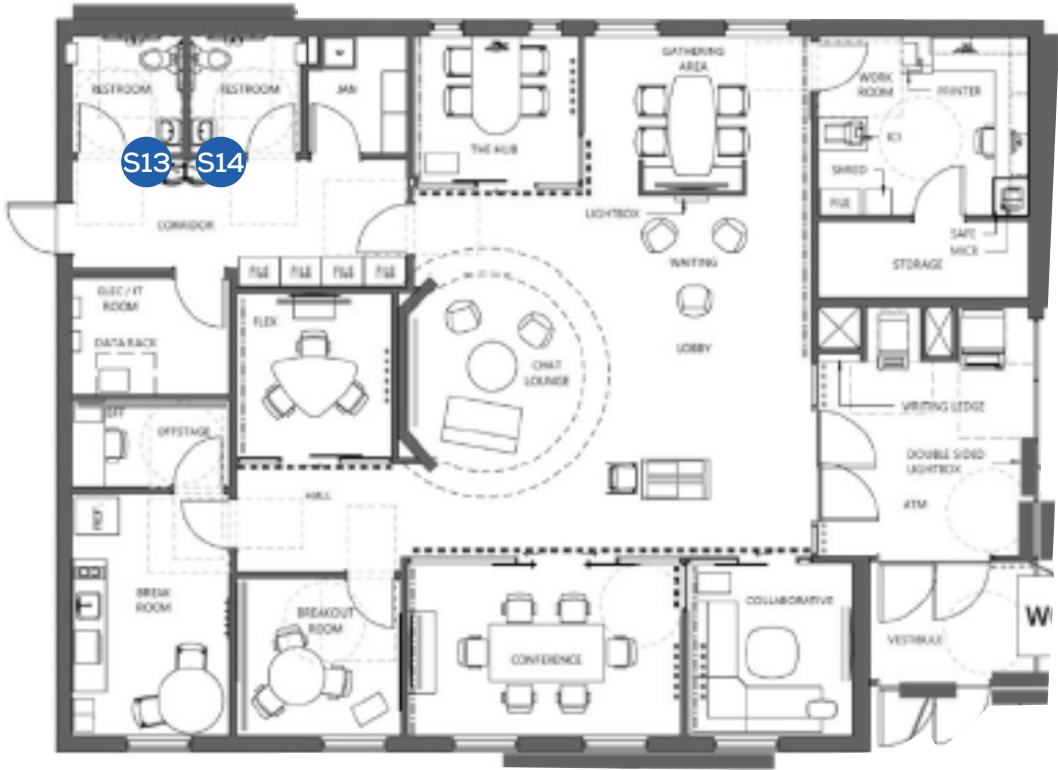


IP-3-ADA-orange Interior Plaque
7 3/4" x 7 3/4"

S14



IP-4-ADA-orange Interior Plaque
7 3/4" x 7 3/4"



These drawings are not for construction purposes. The information contained herein is intended to express design intent only. This original design is the sole property of Blair Image Elements. It cannot be reproduced, copied or exhibited, in whole or in part, without first obtaining written consent from Blair Image Elements.



PNC
West Pryor Development, Lot 9A
Lees Summit, MO 64086

STORE #
BAU531

Issue Date: 05/11/22 Drawn By: RSF		
REV	DATE	DESCRIPTION
0	05/11/22	INITIAL RELEASE
1	05/12/22	ENLARGED ELEVATIONS

S13-14 DETAIL

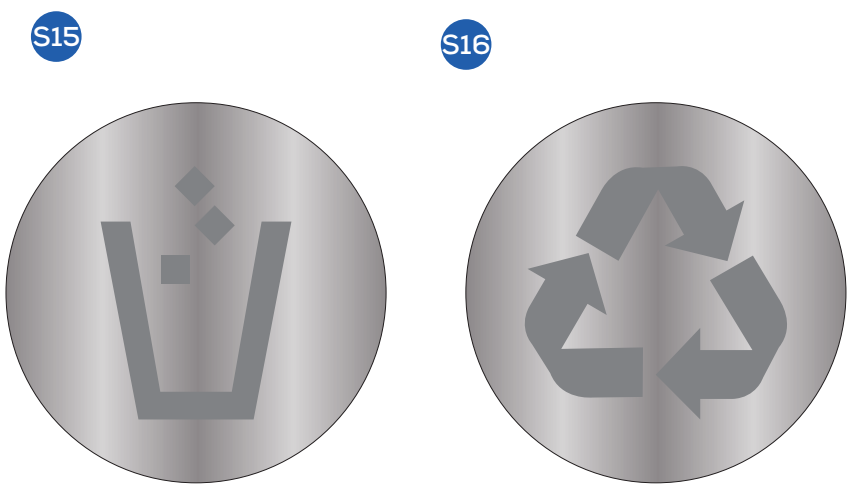
Rev: 1
Date: 05/12/22
Doc #: AD-PNC-1000310-220511-1
Blair Project #: 1000310
Blair Sales Order #: N/A

Blair Image Elements
5107 Kissell Avenue
Altoona, PA 16601
P: (814) 949.8287
blairimage.com

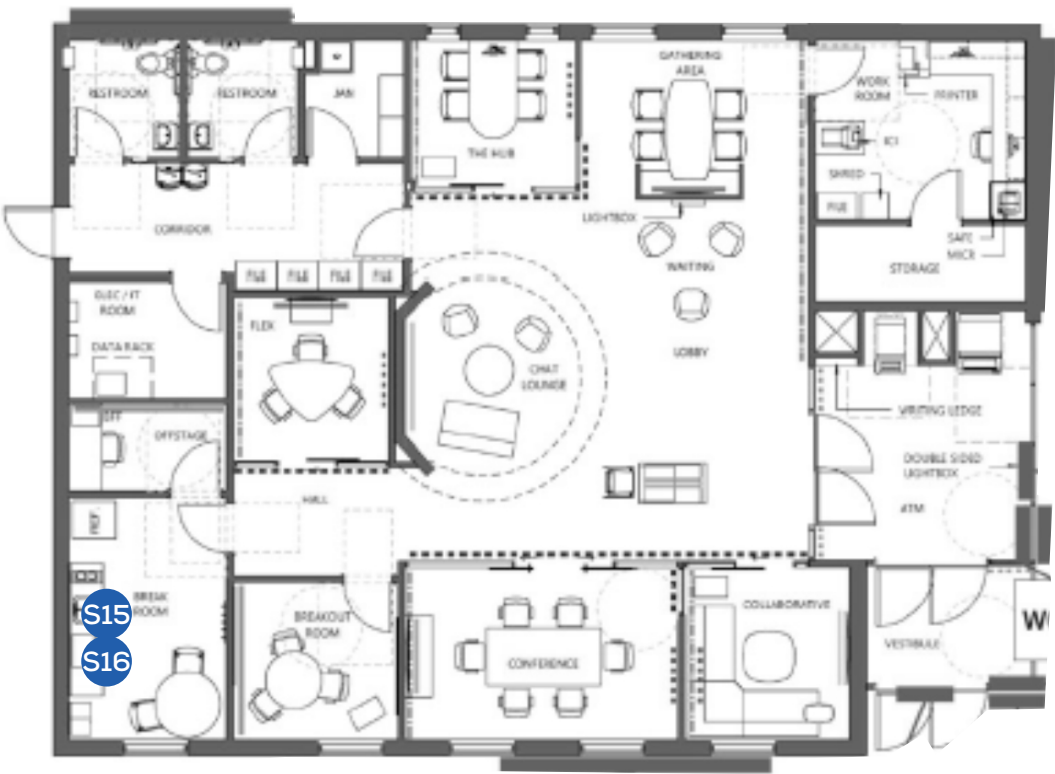


SCOPE OF WORK

1. TRASH & RECYCLING PLAQUES



Trash and Recycling Plaques
1 1/2" x 1 1/2"



These drawings are not for construction purposes. The information contained herein is intended to express design intent only. This original design is the sole property of Blair Image Elements. It cannot be reproduced, copied or exhibited, in whole or in part, without first obtaining written consent from Blair Image Elements.



PNC
West Pryor Development, Lot 9A
Lees Summit, MO 64086

STORE #
BAU531

Issue Date: 05/11/22 Drawn By: RSF		
REV	DATE	DESCRIPTION
0	05/11/22	INITIAL RELEASE
1	05/12/22	ENLARGED ELEVATIONS

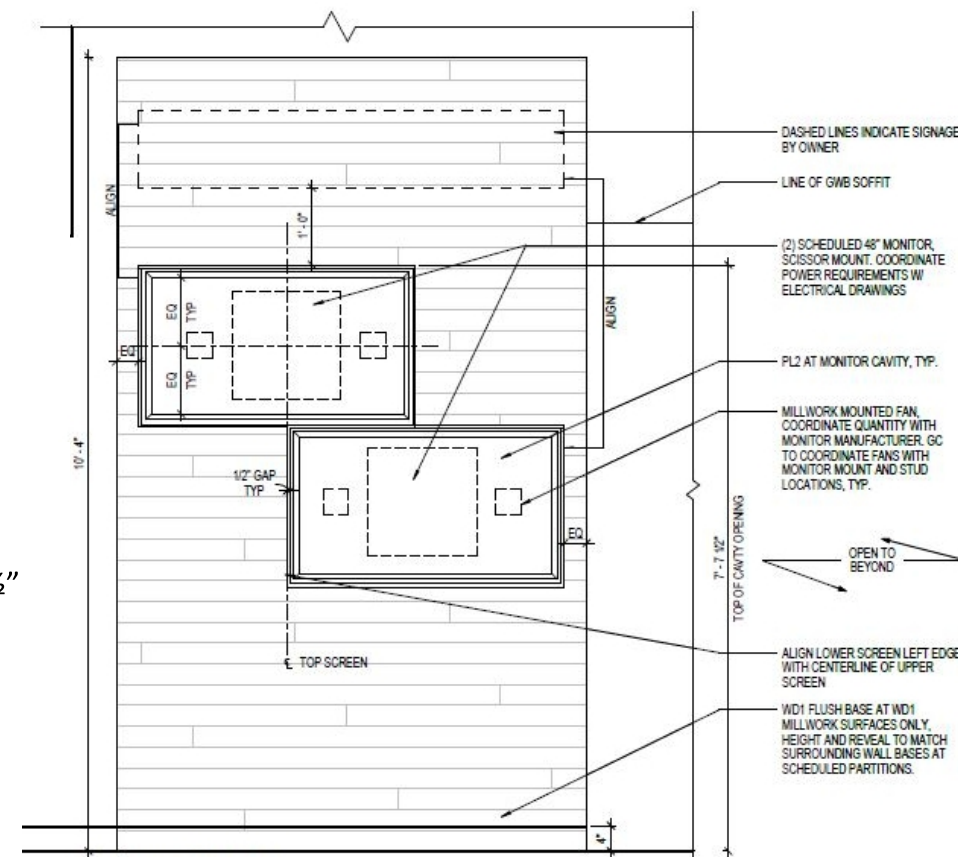
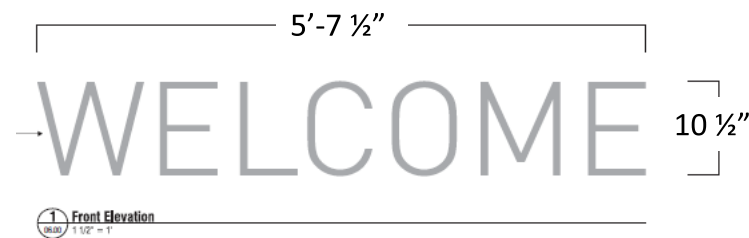
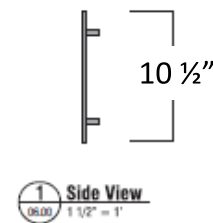
S15-16 DETAIL

Rev: 1
Date: 05/12/22
Doc #: AD-PNC-1000310-220511-1
Blair Project #: 1000310
Blair Sales Order #: N/A

Blair Image Elements
5107 Kissell Avenue
Altoona, PA 16601
P: (814) 949.8287
blairimage.com



- ¼" Thick Aluminum Letters
- Pin Mounted
- Painted Brush Aluminum



STORE #
BAU531

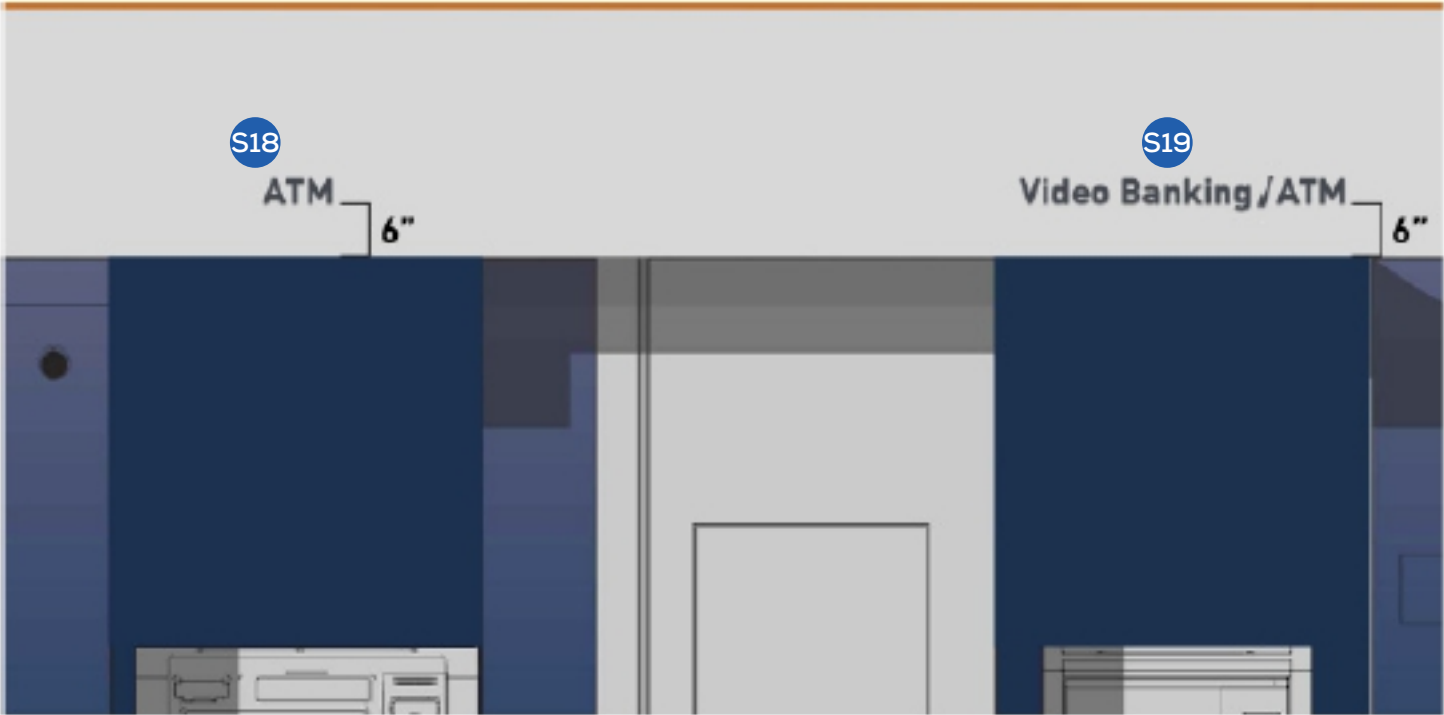
REV	DATE	DESCRIPTION
0	05/11/22	INITIAL RELEASE
1	05/12/22	ENLARGED ELEVATIONS

S17 DETAIL

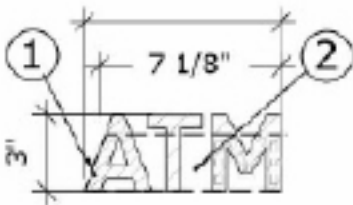
Page 17

Blair Image Elements
5107 Kissell Avenue
Altoona, PA 16601
P: (814) 949.8287
blairimage.com

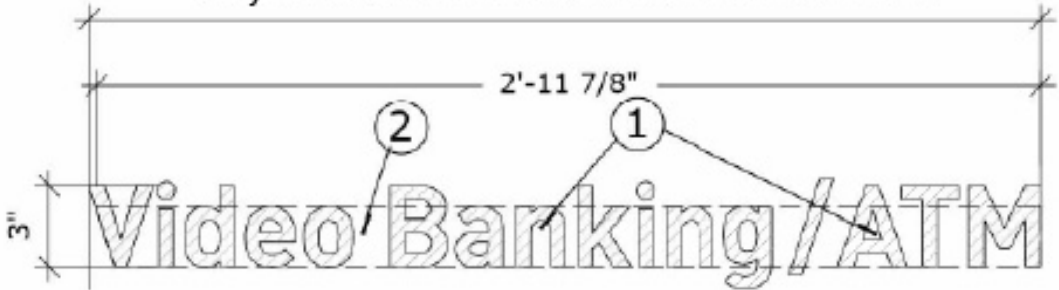
The logo for Blair Image Elements, featuring the word "blair" in a bold, lowercase sans-serif font, with a small blue square above the "i". Below "blair" is the text "IMAGE ELEMENTS" in a smaller, all-caps sans-serif font, with a trademark symbol.



Acrylic letters with brushed aluminum laminate.



Acrylic letters with brushed aluminum laminate.



SCOPE OF WORK

1. ATM LETTERS

2. VIDEO BANKING/ATM LETTERS



These drawings are not for construction purposes. The information contained herein is intended to express design intent only. This original design is the sole property of Blair Image Elements. It cannot be reproduced, copied or exhibited, in whole or in part, without first obtaining written consent from Blair Image Elements.

JOBSITE CODE OF CONDUCT and BASIC EXPECTATIONS

SUBCONTRACTOR recognizes and agrees, that while it is an Independent Contractor from BLAIR and OWNER, SUBCONTRACTOR is an extension of, and representing, the OWNER as perceived by the general public, SUBCONTRACTOR, and any and all Approved Subcontractors, shall abide by the following Code of Conduct while performing WORK for BLAIR to meet the collective professionalism required by SUBCONTRACTOR. BLAIR and OWNER.

- No profanity.
- No offensive clothing.
- No smoking unless in designated area away from the work area.
- No loud music.
- No Horseplay.
- Be respectful and courteous of the location and work site, customers, patrons and the general public,
- Notify location/site manager upon arrival to and departure from site/location_
- Review work and safety plan with location/site Manager .
- Mark *off* work areas with cones and caution tape.
- Use proper PPE (Personal Protective Equipment).
- Maintain a clean, organized and orderly work site.
- Dispose of trash properly; recycle as able.
- Do not bring pets or animals to work site.

Active site locations are not to be left unbranded at completion of daily work schedules. Temporary Banner(s) are to be installed at designated location(s).

INSTALLATION INSTRUCTIONS

Contact your Blair Image Elements' Project Manager for full product installation instructions.

Installation instructions will also be provided on the product crate upon delivery. They will typically be in a plastic sleeve attached directly to the product crate.

All necessary hardware to be provided by installer.

COMMUNICATION and WORK IN PROCESS and COMPLETION PHOTOGRAPHS

SUBCONTRACTOR and any and all Approved Subcontractors, will at a minimum, provide routine communication to BLAIR Project Manager with respect to WORK at the site/location, including but not limited to:

- confirmation text within 15 minutes of arrival at site/location
- mid-day text providing WORK status
- text within 15 minutes of leaving site providing completed WORK status and related photographs of completed WORK and work in process
- completion photographs of lit branding elements requires either night time photographs or photographs showing illuminated LEDs or bulbs.

This communication is required by OWNER who routinely expects daily updates to WORK progress at any given site/location.

SUBCONTRACTOR and any and all Approved Subcontractors, will not begin WORK at site/location, or leave WORK site/location without first communicating with BLAIR Project Manager.

In the event there are questions, concerns, or additional direction is needed, SUBCONTRACTOR and any and all Approved Subcontractors. while on site/location will contact BLAIR Project Manager over the site/location for assistance

Upon completion of WORK, SUBCONTRACTOR and any and all Approved Subcontractors, will obtain written acceptance of completed WORK from site/location Manager and provide a copy of such to BLAIR.

SAFETY CRITERIA

All installers working for Blair must complete the Blair Safety Certification Program.

All Blair subcontractors working on a petroleum site must have a valid API Certification, follow the established guidelines set forth by API as well as follow any local, state. or federal laws.

- Perform a Pre-Task Job Safety Analysis.
- Understand how and where to obtain First-Aid and medical treatment. including CPR.
- Use the proper level of PPE per the assigned task.
- Only use tools that are insafe working orderbefore using them.
- Always use tools for their intended purpose and never over their safe working limit.
- Employees operating vehicles must conform to all DOT requirements as well as API regulations.
- Use proper fall arrest equipment.
- Understand the requirements for working at height on a job site.
- Properly barricade the work area from the public in accordance with Section 8 of the API guidelines.
- Only competent and trained people using approved equipment in a manner in accordance with Section 10 of the API guidelines should perform lifting duties.

Examples of Equipment Include: Personal Protective Equipment. Barricade, Crane, Hoist, Bucket Truck, Scissor Lift, Ladder, Vinyl Applicators (Squeegee or Application Liquid). Welder/Torch. and Hand Tools/Power Tools

SERVICE CONTACT

Service Contact: (814) 283-2177
Service Hours: 8:00 am to 4:30 pm EST, Monday - Friday
website: www.blairimage.com/support
email: service@blairimage.com

After hours I holiday emergencies, call (800) 563-9598

These drawings are not for construction purposes. The information contained herein is intended to express design intent only. This original design is the sole property of Blair Image Elements. It cannot be reproduced, copied or exhibited, in whole or in part, without first obtaining written consent from Blair Image Elements.