



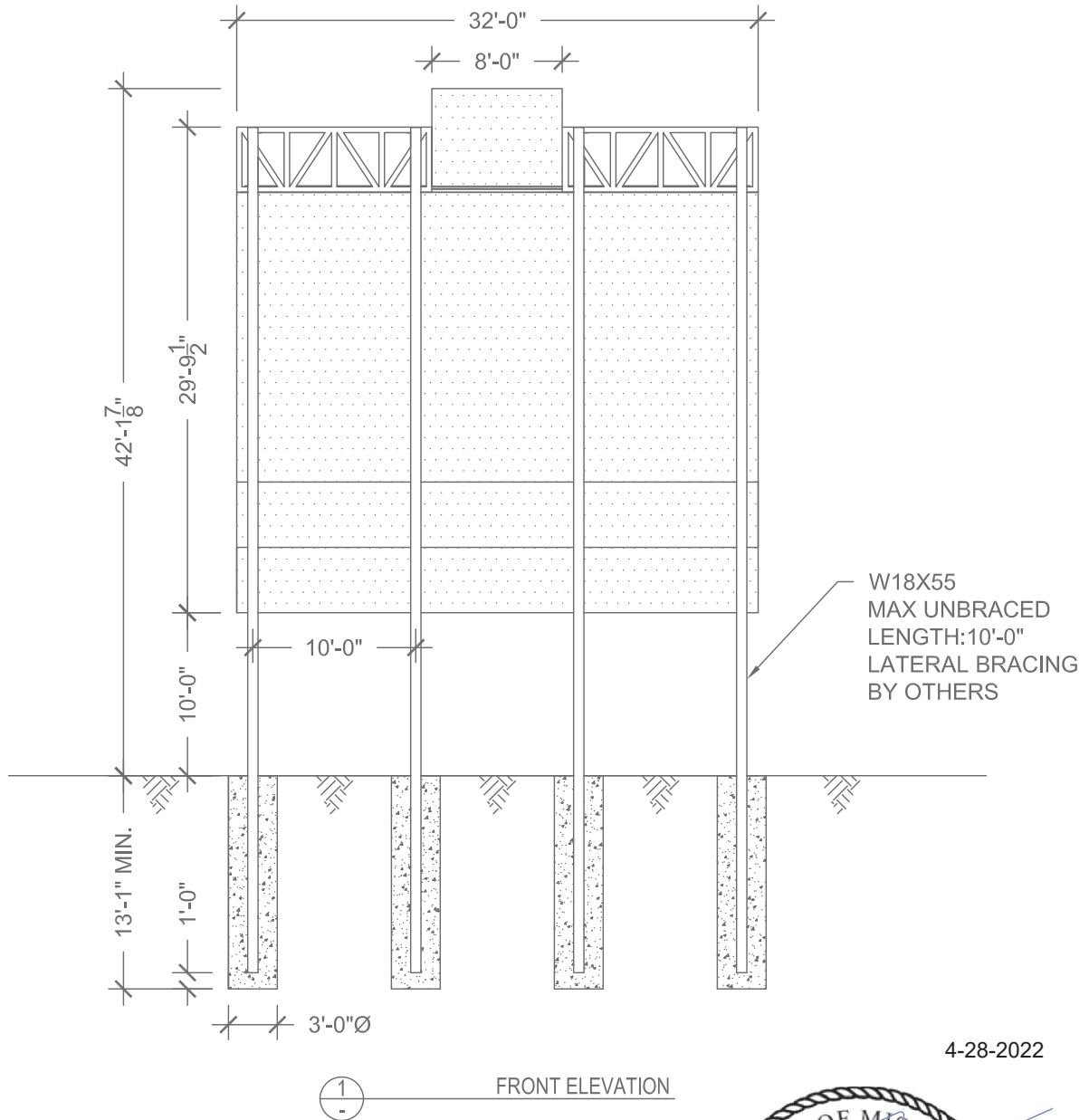
11545 W. BERNARD COURT
SUITE 201, SAN DIEGO, CA 92127

PROJECTMANAGER@SULLAWAYENG.COM

PHONE: 1-858-312-5150 FAX: 1-858-777-3534

PROJECT: LEE'S SUMMIT HIGH SCHOOL - 400 SE BLUE PARKWAY, LEE'S SUMMIT, MO
PROJECT #: 34803
CLIENT: NEVCO

DATE: 4/27/2022
ENGINEER: AV
LAST REVISED:



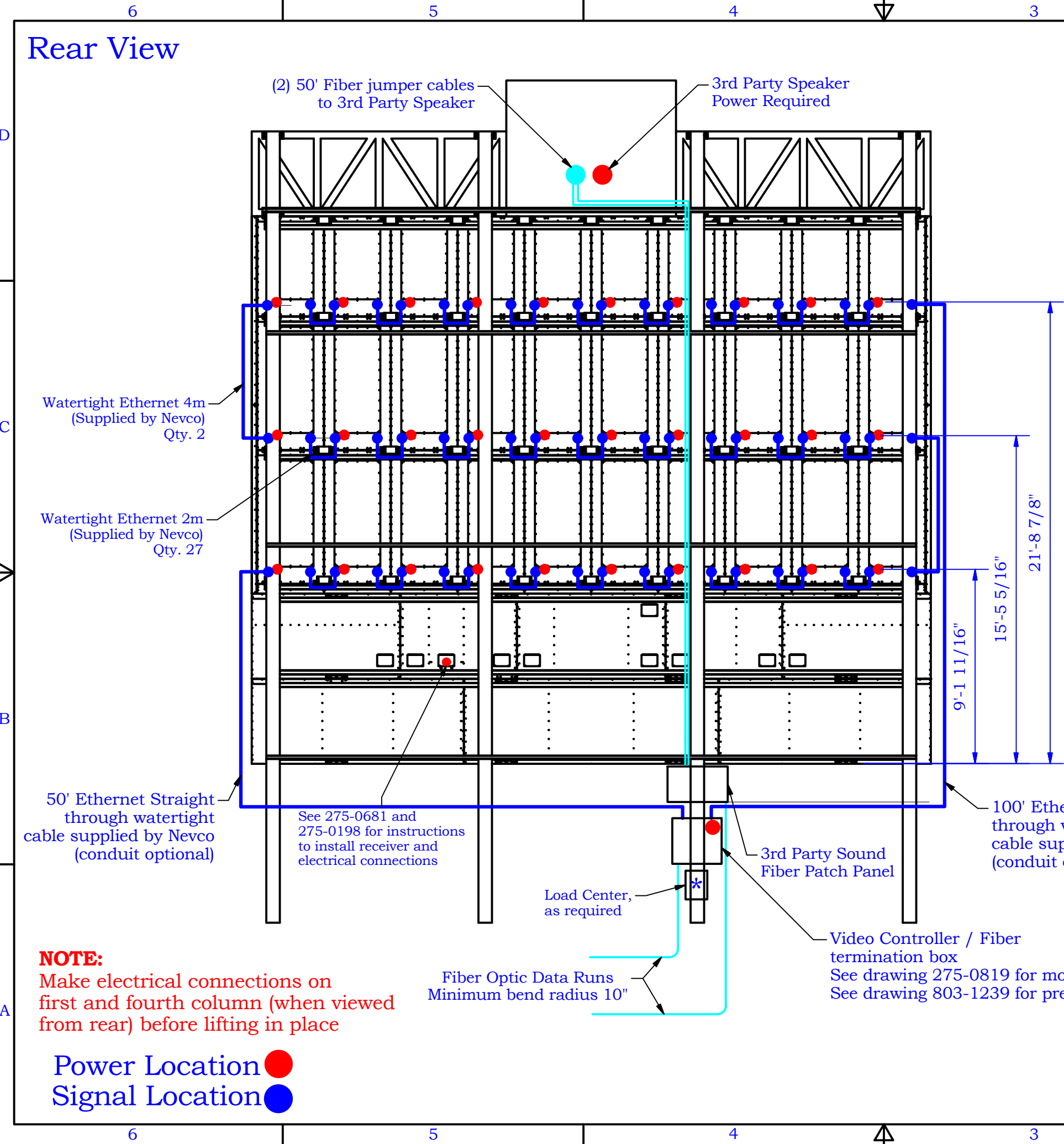
4-28-2022

GENERAL NOTES

1. DESIGN CODE: IBC 2018
2. DESIGN LOADS: ASCE 7-16
3. WIND VELOCITY: 110 MPH EXPOSURE C
4. CONCRETE 2500 PSI MIN.
5. WIDE FLANGE STEEL ASTM A992, Fy = 50 KSI MIN.
6. PROVIDE 3" CONCRETE COVER MIN. ON ALL STEEL EMBEDDED IN CONCRETE WHEN CAST AGAINST SOIL
7. PROVIDE PROTECTION AGAINST DISSIMILAR METALS USING ANTI-CORROSIVE PAINT OR NEOPRENE GASKETS.
8. LATERAL SOIL BEARING PER IBC CLASS 4 (150 PSF/FT)
9. ALL DIMENSIONS TO BE VERIFIED PRIOR TO FABRICATION.



Rear View



NOTE:
Make electrical connections on first and fourth column (when viewed from rear) before lifting in place

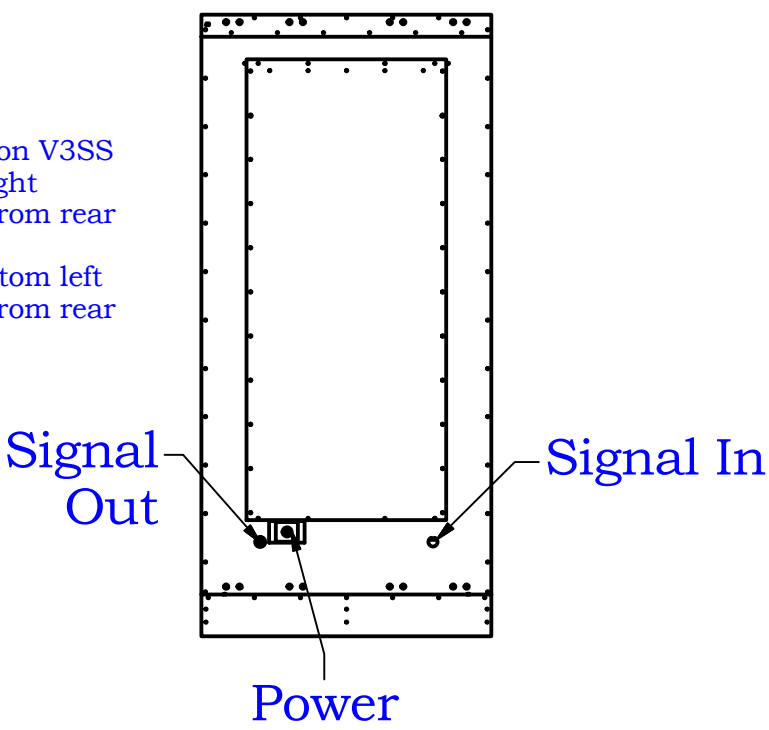
Power Location ●
Signal Location ●

Actual Full-Load Power Consumption (120-240VAC, 50/60Hz)				As Noted on Plans Review
Description	@120V	@208VAC	@240V	Quantity
Custom Scoreboard	5.0	2.9	2.5	1
16mm Video Module 6.30'x3.14'	6.7	3.8	3.3	20
16mm Video Module 4.72'x3.14'	5.0	2.9	2.5	10
3rd Party Sound System	N/A	12	N/A	1
Fiber Converters	0.1	N/A	N/A	2
MPC Receiver	0.2	N/A	N/A	1
Total + 30% Margin	277.2A	159.9 A	138.6A	

Use high inrush current circuit breakers for video display.
* National Electrical Code requires a disconnect switch within sight of sign or lockable within the building. If a subpanel is fed via a breaker from a main panel inside the building, ensure a lockable panel is installed.

Important. Read before Installation.
This display is intended to be installed in accordance with the requirements of Article 600 of the National Electrical Code and/or other applicable local codes. This includes proper grounding and bonding of the sign. All personnel who work with electrical connections must be educated in the safe procedures for installing and repairing electrical connections before they are given the responsibility of performing such tasks.

Controller Configuration V3SS
PortA: Signal In top right cabinet when viewed from rear
Port B: Signal Out bottom left cabinet when viewed from rear



* Load center, power wire, conduit and fittings are supplied by installer.


Lee's Summit High School
Lee's Summit, MO
Custom Video

Nevco, Inc.
Greenville, Illinois 62246

Last ECO	Drawing No.
Drawn MJM	Date 4/28/2022
Sheet 1 of 2	Quote 43546 Elec

Panel Schedule						
	208 VAC-3Phase					
Description	ØA	ØB	ØC	breaker	trip	Loads
16mm Tall Modules	1.608			2-pole	20A	2 Tall
16mm Tall Modules		1.608				2 Tall
16mm Tall Modules			1.608	2-pole	20A	2 Tall
16mm Tall Modules	1.608					2 Tall
16mm Tall Modules		1.608		2-pole	20A	2 Tall
16mm Tall Modules			1.608			2 Tall
16mm Tall Modules	1.608			2-pole	20A	2 Tall
16mm Tall Modules		1.608				2 Tall
16mm Tall Modules			1.608	2-pole	20A	2 Tall
16mm Tall Modules	1.608					2 Tall
16mm Short Modules		1.8		2-pole	20A	3 Short
16mm Short Modules			1.2			2 Short
16mm Short Modules	1.8			2-pole	20A	3 Short
16mm Short Modules		1.2				2 Short
Sound System			1.248	2-pole	20A	Sound
Sound System	1.248					System
Scoreboard		1.04		1-pole	20A	120VAC
Fiber Adaptors			0.048	1-pole	20 A	120VAC
Total	9.48	8.864	7.32			
max KVA		9.48				
Max phase Line Current with 30% margin		102.50				

Lee's Summit
High School
Lee's Summit, MO
Custom Video


Nevco, Inc.
Greenville, Illinois 62246

Last ECO

Drawn MJM


Date 4/28/2022

Sheet 2 of 2

Quote 43546 Elec

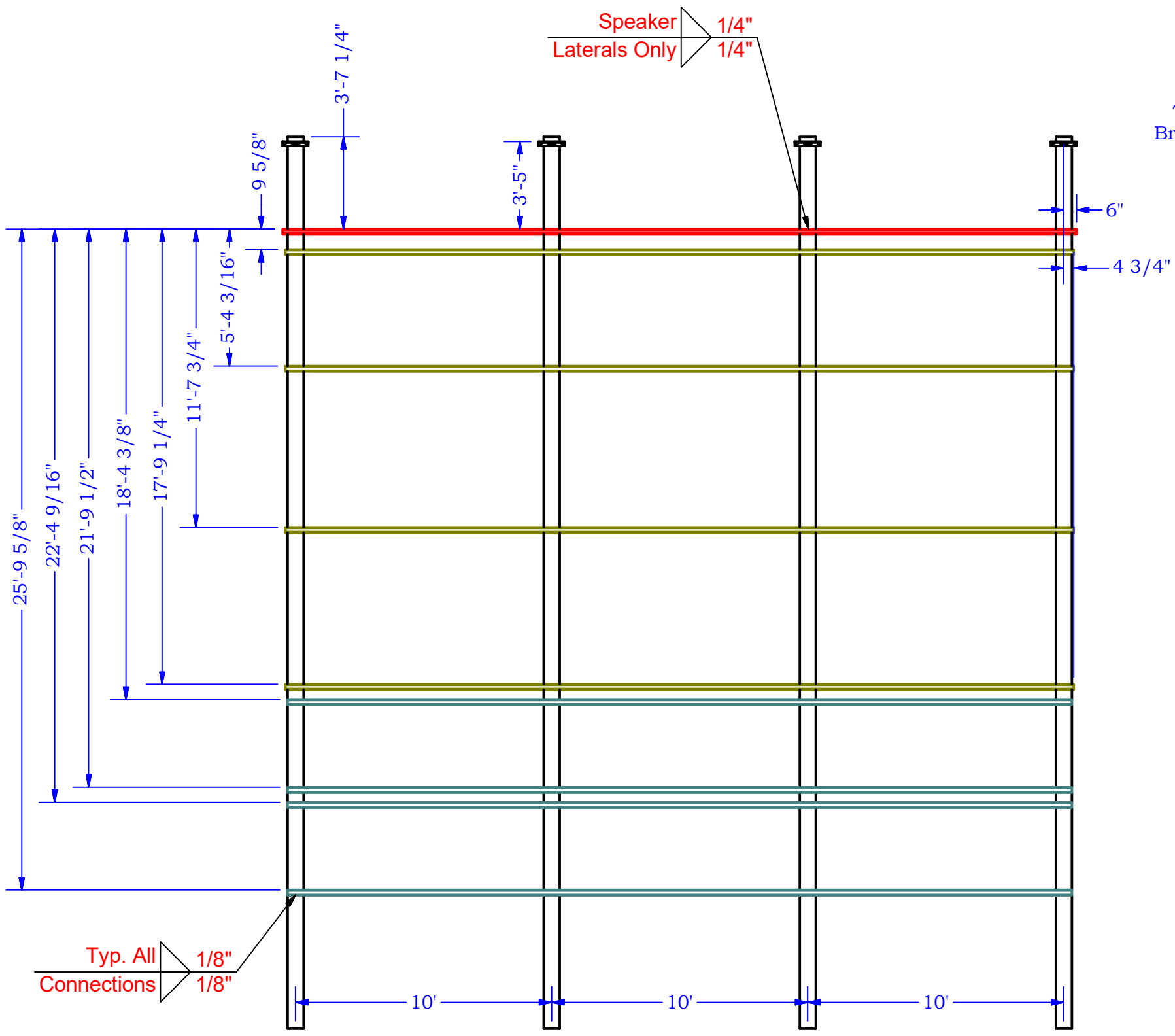
General Notes:

1. Column steel to be grade A992 (50 ksi steel minimum).
2. Bracing steel to be ASTM A500 Grade B minimum
3. Minimum bolt grade: A307
4. Per IBC standards, welds to conform to AWS standard

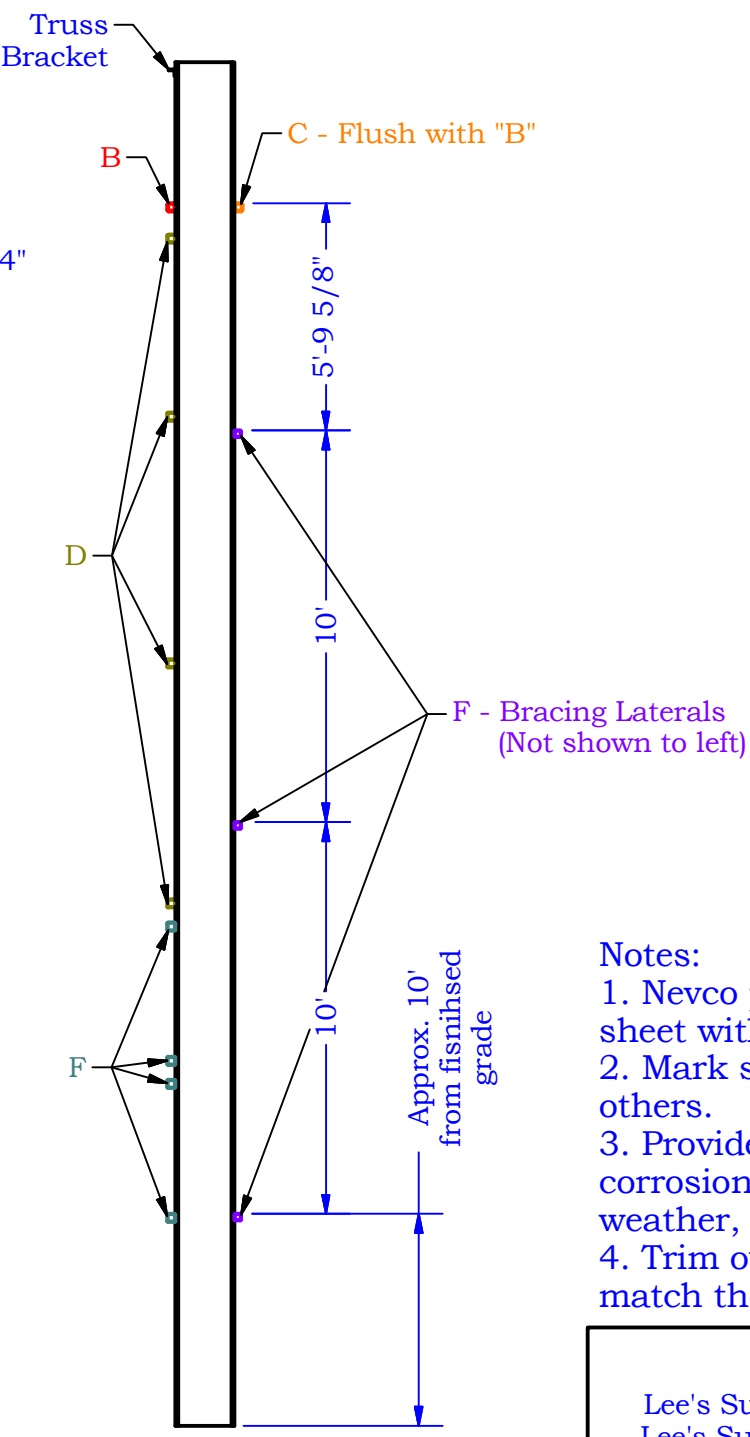
<p>Lee's Summit HS, Lee's Summit, MO Custom Video Installation</p>		 <p>Nevco, Inc. Greenville, Illinois 62246</p>
<p>Last ECO</p>		<p>Drawing No. Quote 43546 MECH</p>
<p>Drawn MJM</p>	<p>Date 4/28/2022</p>	<p>Sheet 1 of 5</p>

Laterals and Brackets Installation

* All Dimensions to TOP of laterals and brackets



Front View



Side View

Steel Supplied by Others				As Noted on Plans	Rev
Part	Description	Size	Length	Quantity	
A	Columns	W18 x 55	51' 10-1/4"	4	
B	Front Speaker Lateral	HSS 2-1/2" x 2-1/2" x 1/4"	31'	1	
C	Back Speaker Lateral	HSS 2-1/2" x 2-1/2" x 1/4"	30' 7-1/2"	1	
D	Video Laterals	HSS 2-1/2" x 2-1/2" x 1/8"	30' 9-7/16"	4	
E	Scoreboard/Sign Lateral	HSS 2-1/2" x 2-1/2" x 1/8"	30' 7-1/2"	4	
F	Bracing Laterals	HSS 2" x 2" x 1/8"	30' 7-1/2"	3	

- Notes:
1. Nevco provided hardware itemized on sheet with bolt/nut/screw bags.
 2. Mark shortest column, then level across to others.
 3. Provide a protective coating to minimize corrosion for all steel members exposed to weather, moisture, or soil.
 4. Trim outer columns after installation to match the shape of the arched truss.

Lee's Summit HS,
Lee's Summit, MO
Custom Video
Installation

Nevco, Inc.
Greenville, Illinois 62246

Last ECO

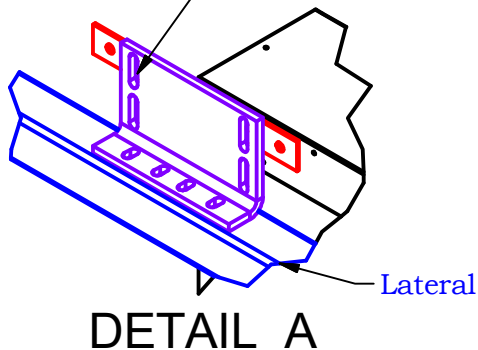
Drawn **MJM** Date **4/28/2022**

Drawing No.
Quote 43546 MECH

Sheet **2** of **5**

Video Display Installation

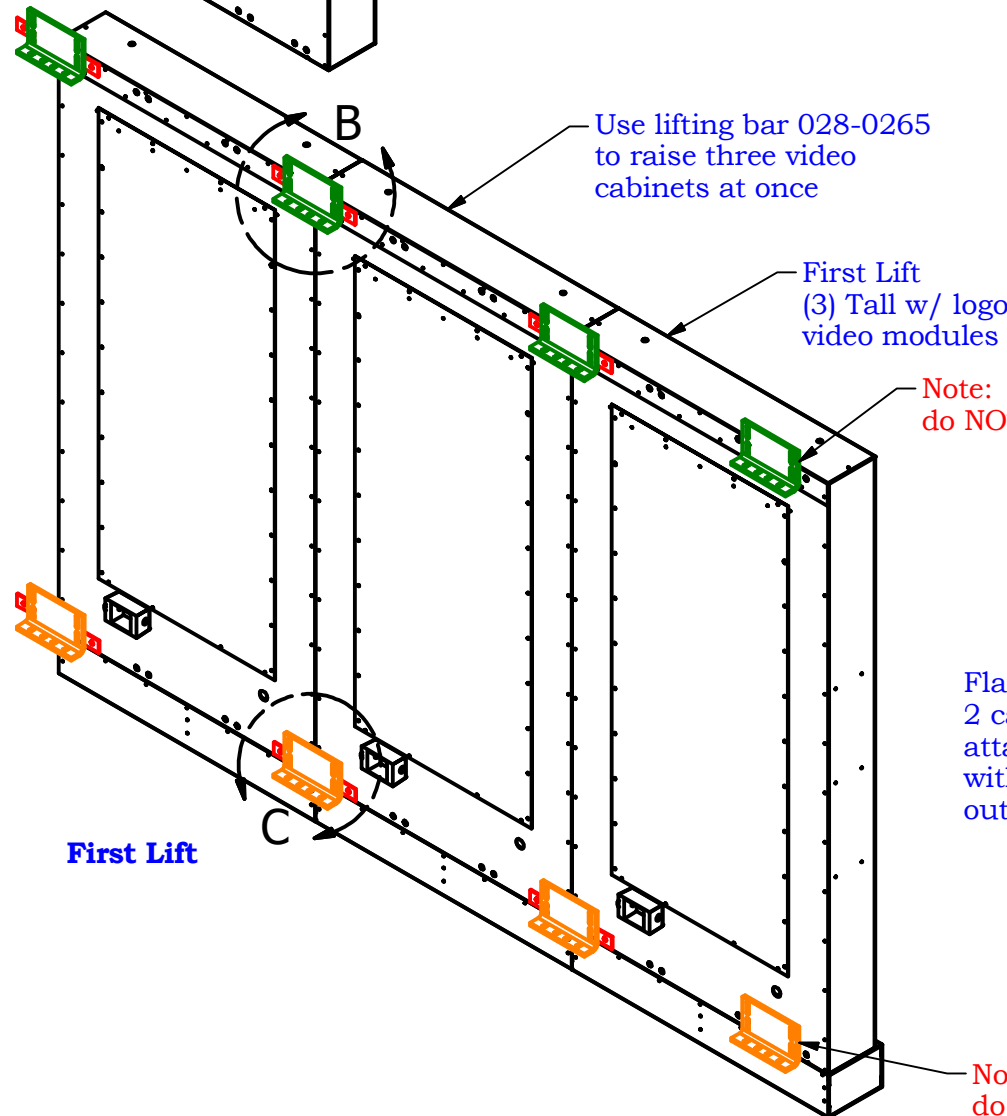
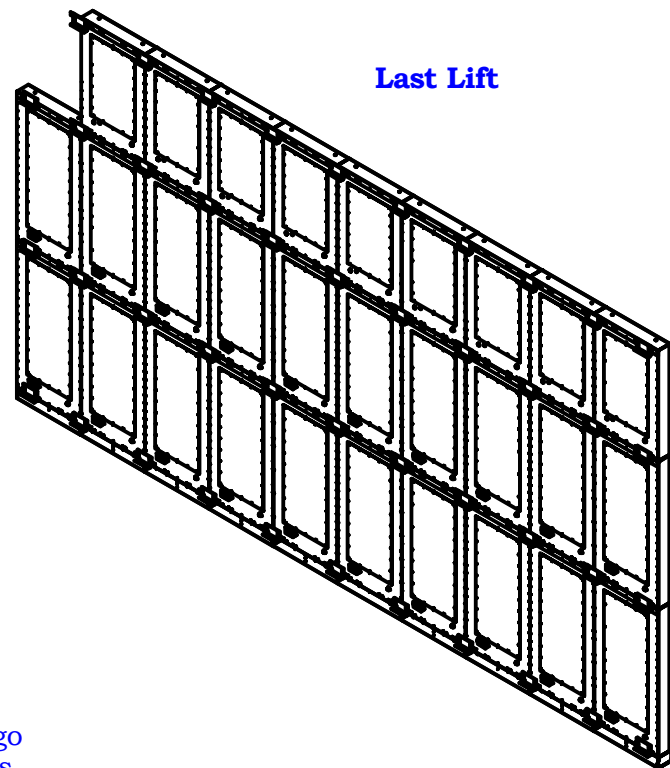
Top row of video cabinets should use top slotted holes in bracket.



Note: Side brackets do NOT have straps



Last Lift



Note: Side brackets do NOT have straps

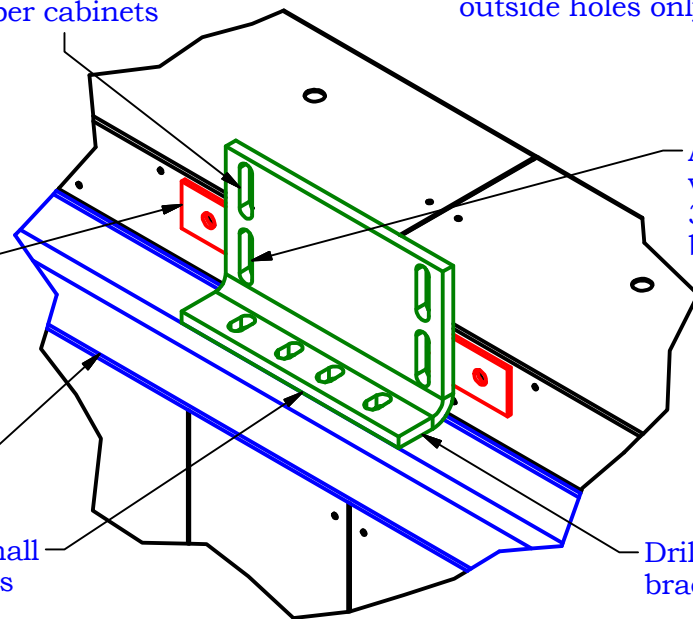
Top slots are for attachment of upper cabinets

Flat bracket shall span 2 cabinets and be attached to the cabinets with bolts on the outside holes only

Lateral

8" "Video" bracket shall face down on all rows

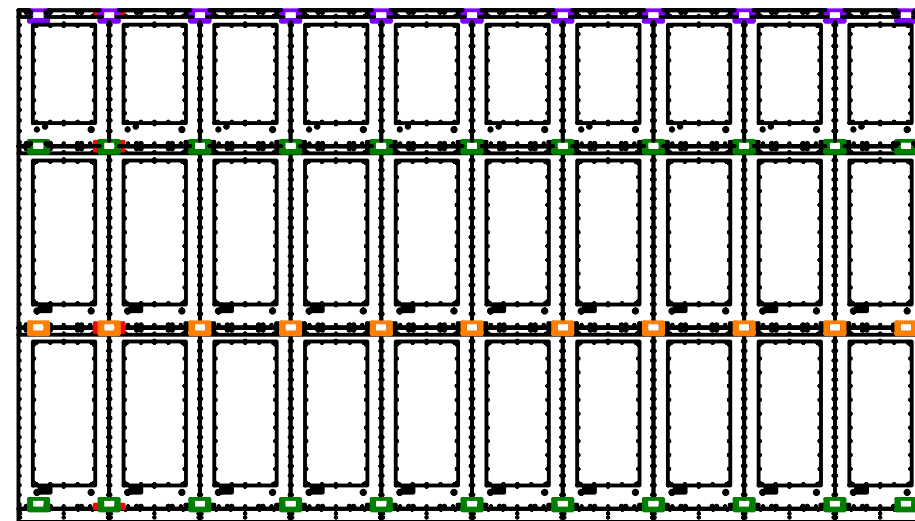
Note: Side brackets do NOT have straps



DETAIL B

*Note: The brackets on the far left and right end of the display do not require straps.

Order of video modules as seen from the rear



Rear View

See page 1 for front view video block orientation.

Attach bracket to the video cabinet using 3/8" serrated flange bolts (provided by Nevco)

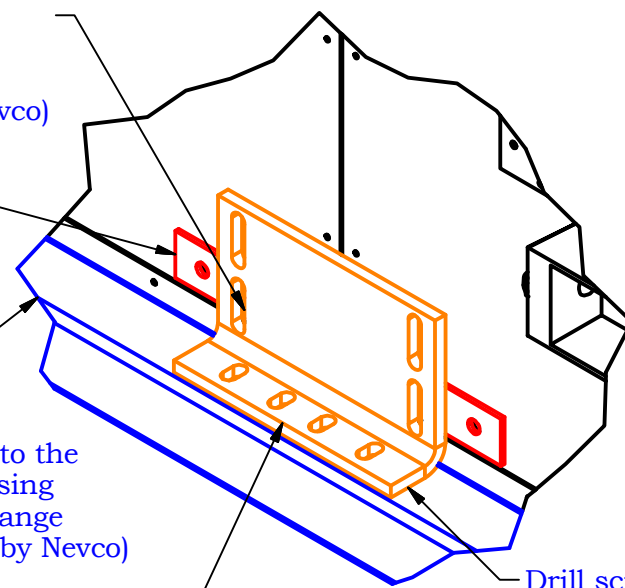
Flat bracket shall span 2 cabinets and be attached to the cabinets with bolts on the outside holes only

Lateral

Attach bracket to the video cabinet using 3/8" serrated flange bolts (provided by Nevco)

8" "Video" bracket shall face down on all rows

Drill screw or weld bracket to lateral



DETAIL C

Lee's Summit HS,
Lee's Summit, MO
Custom Video
Installation



Nevco, Inc.
Greenville, Illinois 62246

Last ECO

Drawing No.

Quote 43546 MECH

Drawn MJM

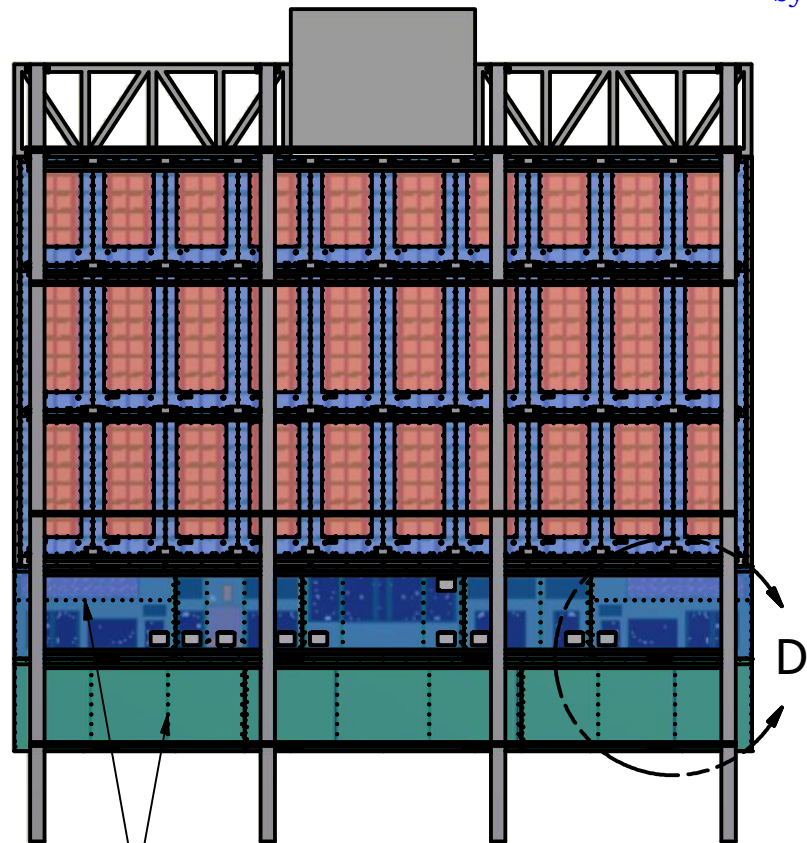
Date

4/28/2022

Sheet 3 of 5

Filler Panel and Scoreboard Installation

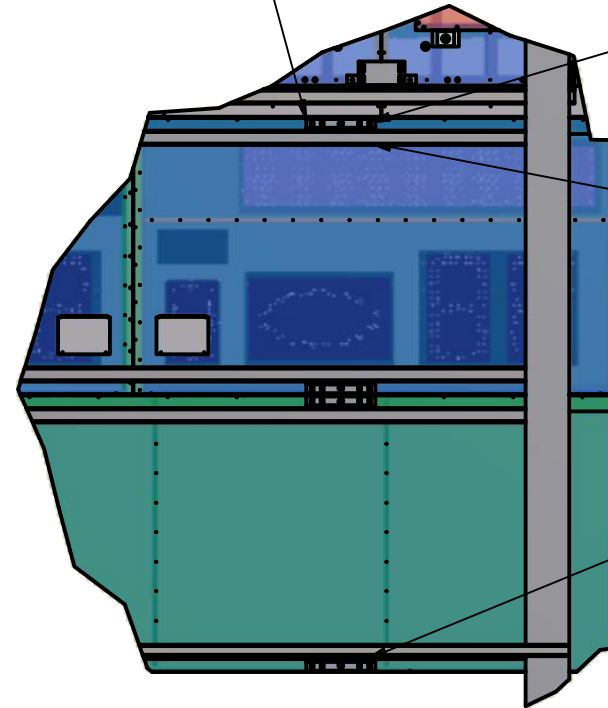
(See 241-0357 and 241-0365 for more details)



Scoreboard and sign use same connection method

Connect brackets to laterals using 3/8" bolts, washers, and nuts or by welding (Conenction by Others)

Mount 12" scoreboard brackets to back of cabinets using 3/8" serrated flange bolts (Provided by Nevco). Top brackets face down and bottom brackets face up.

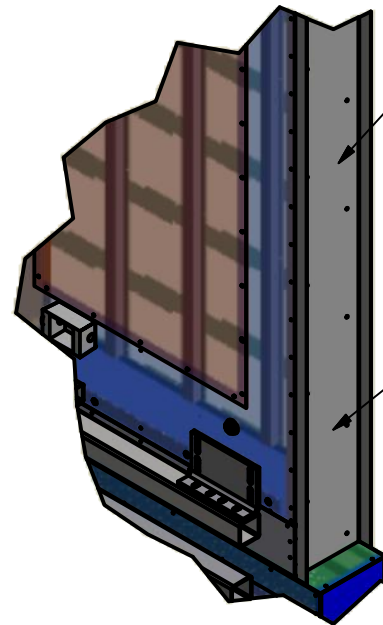
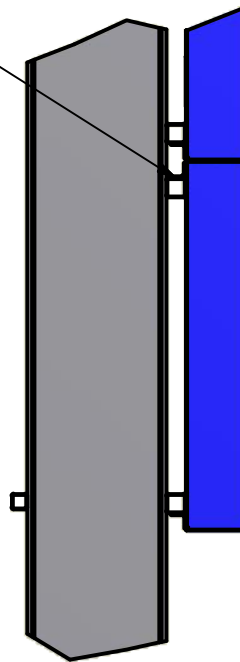


DETAIL D

Top bracket connects to top of lateral

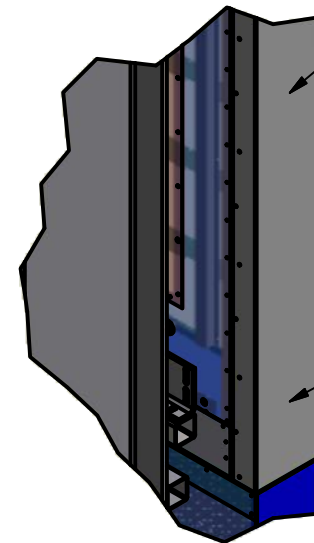
Bottom brackets connect to bottom of lateral

DETAIL E



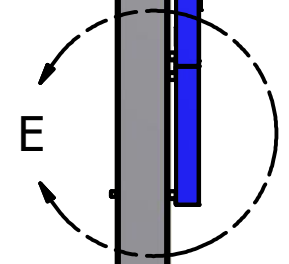
Attach inner channel of filler panel to side of video cabinets using sheet metal screw (Provided by Nevco) in each pre-punched location

Center inner channel on side of video block



After inner channels have been installed, slide out channel over inner channel and attach channels together using drill screws in each pre-punched hole. Outer channel to be flush with outside of scoreboard. (Provided by Nevco)

Center channels in vertical and horizontal directions



E

Lee's Summit HS,
Lee's Summit, MO
Custom Video
Installation



Nevco, Inc.
Greenville, Illinois 62246

Last ECO

Drawing No.

Drawn MJM

Date 4/28/2022

Quote 43546 MECH

Sheet 4 of 5

RELEASED FOR
CONSTRUCTION

As Noted on Plans Review

Development Services Department
Lee's Summit, Missouri
06/03/2022

