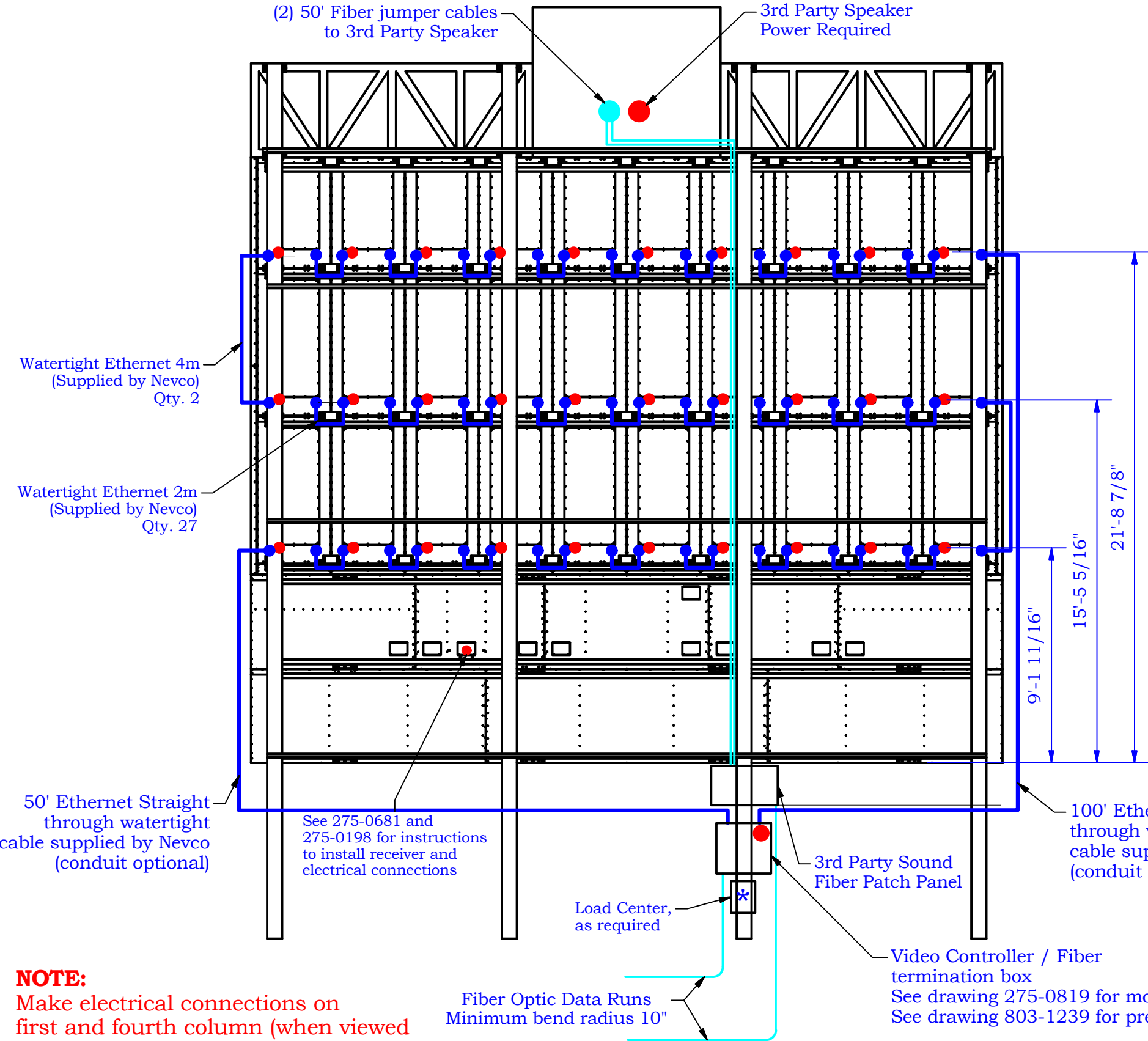


Rear View



NOTE:
Make electrical connections on first and fourth column (when viewed from rear) before lifting in place

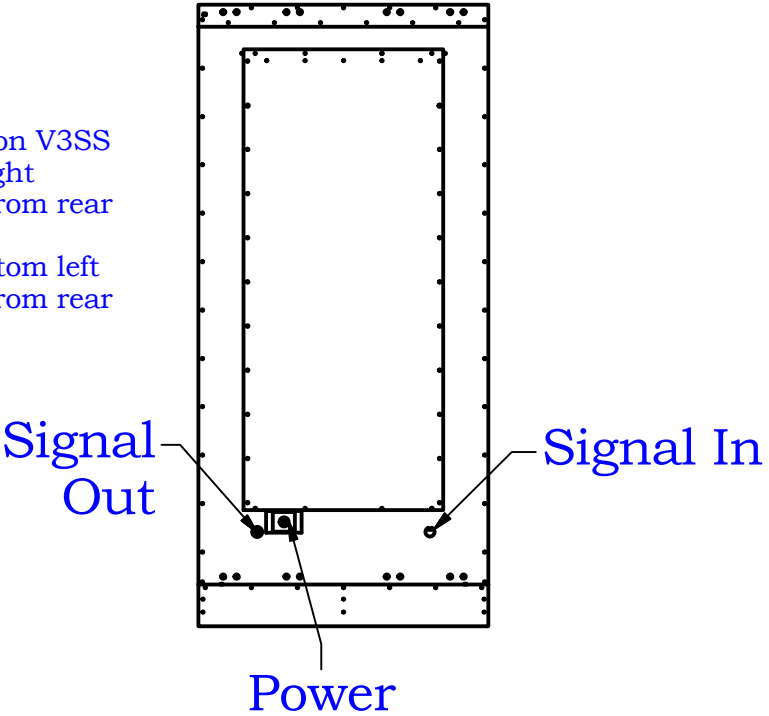
Power Location ●
Signal Location ●

Actual Full-Load Power Consumption (120-240VAC, 50/60Hz)				
Description	@120V	@208VAC	@240VA	Quantity
Custom Scoreboard	5.0	2.9	2.5	1
16mm Video Module 6.30'x3.14'	6.7	3.8	3.3	20
16mm Video Module 4.72'x3.14'	5.0	2.9	2.5	10
3rd Party Sound System	N/A	12	N/A	1
Fiber Converters	0.1	N/A	N/A	2
MPC Receiver	0.2	N/A	N/A	1
Total + 30% Margin	277.2A	159.9 A	138.6A	

Use high inrush current circuit breakers for video display.
* National Electrical Code requires a disconnect switch within sight of sign or lockable within the building. If a subpanel is fed via a breaker from a main panel inside the building, ensure a lockable panel is installed.

Important. Read before Installation.
This display is intended to be installed in accordance with the requirements of Article 600 of the National Electrical Code and/or other applicable local codes. This includes proper grounding and bonding of the sign. All personnel who work with electrical connections must be educated in the safe procedures for installing and repairing electrical connections before they are given the responsibility of performing such tasks.

Controller Configuration V3SS
PortA: Signal In top right cabinet when viewed from rear
Port B: Signal Out bottom left cabinet when viewed from rear



* Load center, power wire, conduit and fittings are supplied by installer.


Lee's Summit
West High School
Lee's Summit, MO
Custom Video

Nevco, Inc.
Greenville, Illinois 62246

Last ECO	Drawing No.
Drawn MJM	Date 4/27/2022
Sheet 1 of 2	Quote 43549 Elec

Panel Schedule						
	208 VAC-3Phase					
Description	ØA	ØB	ØC	breaker	trip	Loads
16mm Tall Modules	1.608			2-pole	20A	2 Tall
16mm Tall Modules		1.608				2 Tall
16mm Tall Modules			1.608	2-pole	20A	2 Tall
16mm Tall Modules	1.608					2 Tall
16mm Tall Modules		1.608		2-pole	20A	2 Tall
16mm Tall Modules			1.608			2 Tall
16mm Tall Modules	1.608			2-pole	20A	2 Tall
16mm Tall Modules		1.608				2 Tall
16mm Tall Modules			1.608	2-pole	20A	2 Tall
16mm Tall Modules	1.608					2 Tall
16mm Short Modules		1.8		2-pole	20A	3 Short
16mm Short Modules			1.2			2 Short
16mm Short Modules	1.8			2-pole	20A	3 Short
16mm Short Modules		1.2				2 Short
Sound System			1.248	2-pole	20A	Sound
Sound System	1.248					System
Scoreboard		1.04		1-pole	20A	120VAC
Fiber Adaptors			0.048	1-pole	20 A	120VAC
Total	9.48	8.864	7.32			
max KVA		9.48				
Max phase Line Current with 30% margin		102.50				

Lee's Summit
West High School
Lee's Summit, MO
Custom Video


Nevco, Inc.
Greenville, Illinois 62246

Last ECO

Drawn MJM

Drawing No. Quote 43549 Elec

Date 4/27/2022

Sheet 2 of 2