



# HD Engineering & Design

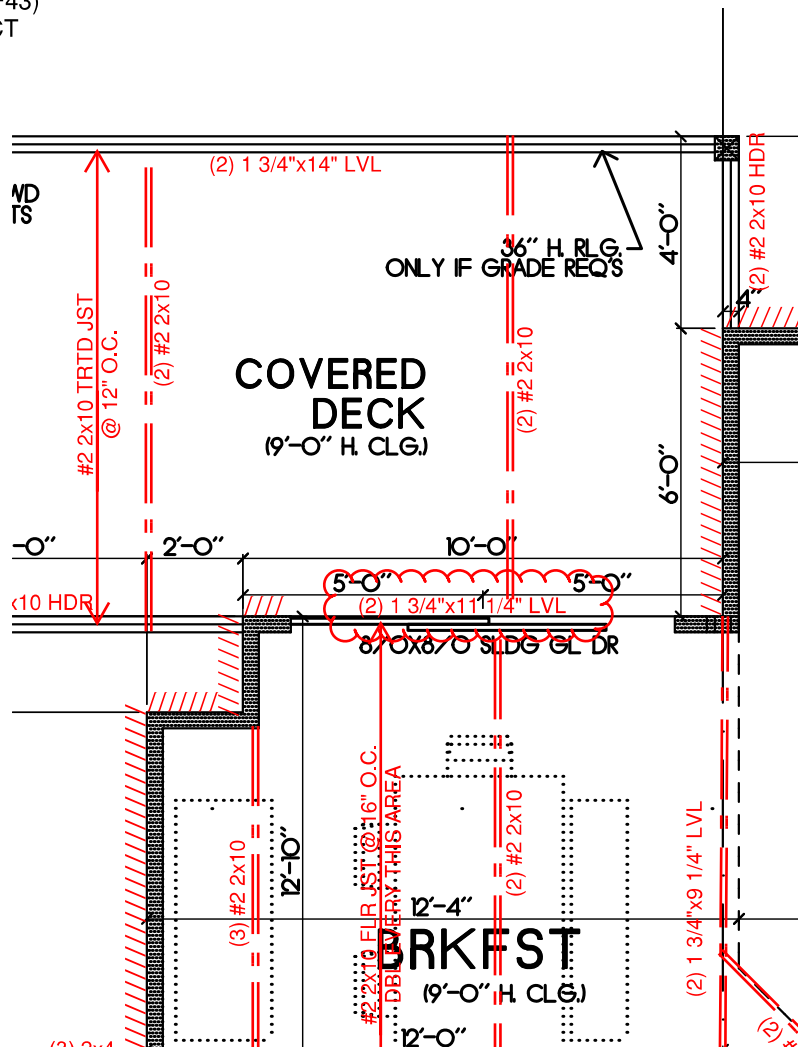
*Solutions for all your engineering and design needs*

## FRAMING ADDENDUM

5/19/2022

SAB HOMES

RE: STRATOGA EXP. (HF43)  
2023 WHEATFIELD CT  
LEE'S SUMMIT, MO.



This report has been prepared for the exclusive use of our client for specific application to the project discussed and has been prepared in accordance with generally accepted engineering practices. No warranties, either express or implied, are intended or made.

We appreciate the opportunity to be of service to you on this project. If you have any questions regarding this report, please contact us.

Very truly yours,  
HD ENGINEERING & DESIGN, INC.

John Hulse, Principal

