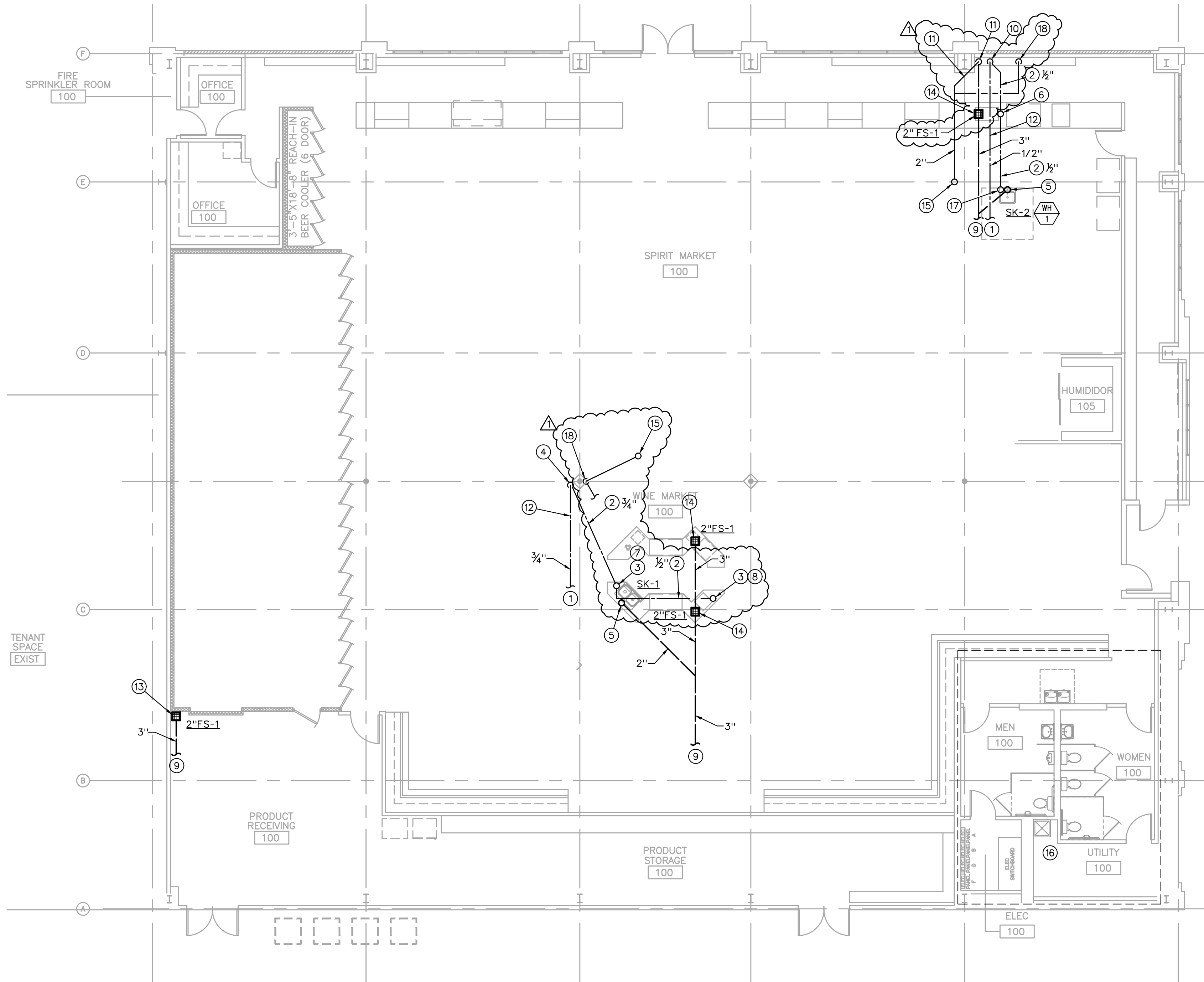
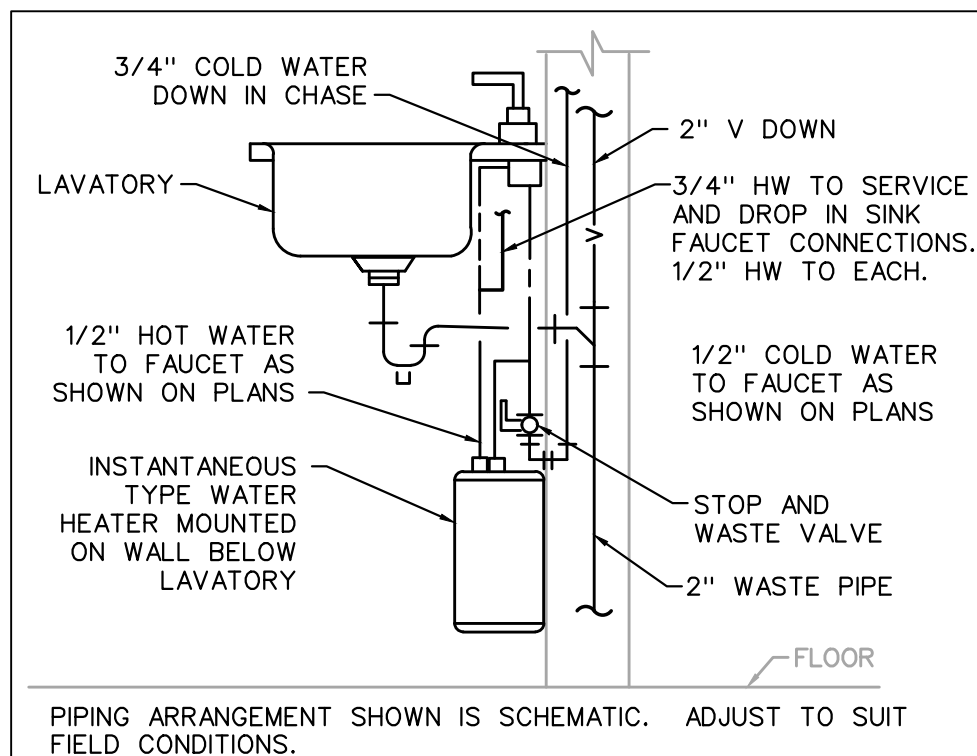


X:\AEC-PROJECTS\2022 PROJECTS\20035G_MACADOODLES LEE'S SUMMIT\22035G_P200_2022-04-13_JEE_24X36.DWG : 5/5/2022 1:44:03 PM : jeshnour



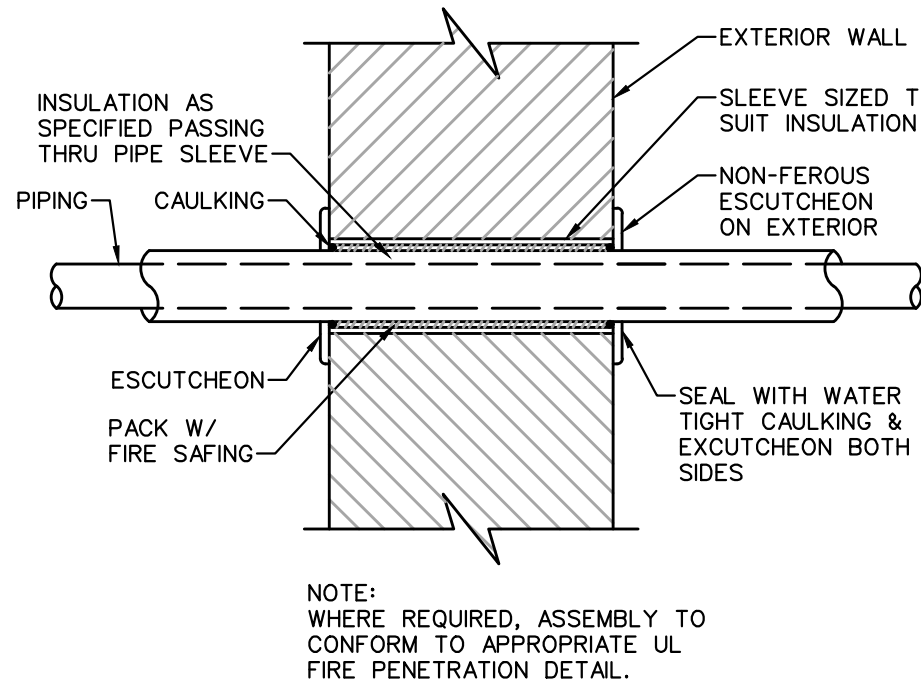
PLUMBING FLOOR PLAN

1/8" = 1'-0"

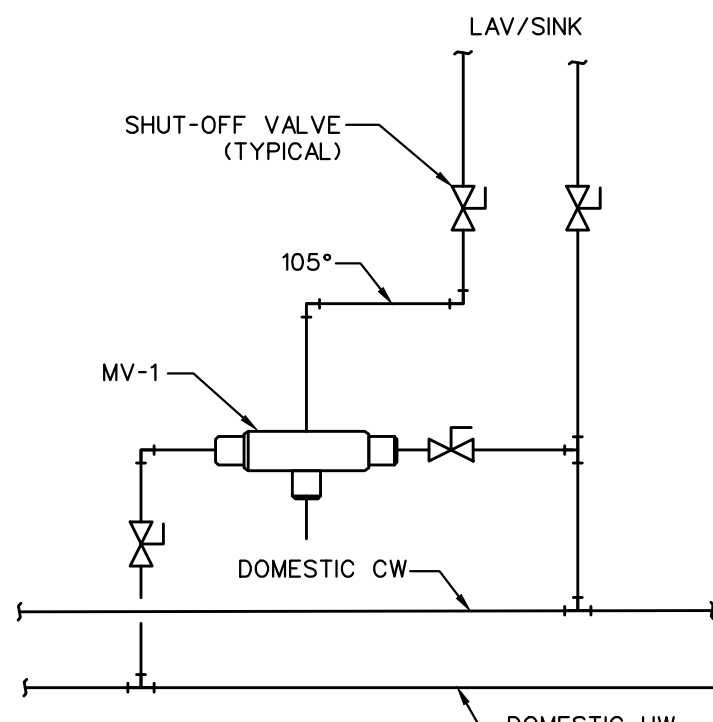


1
P200 INSTANTANEOUS WATER HEATER
NO SCALE

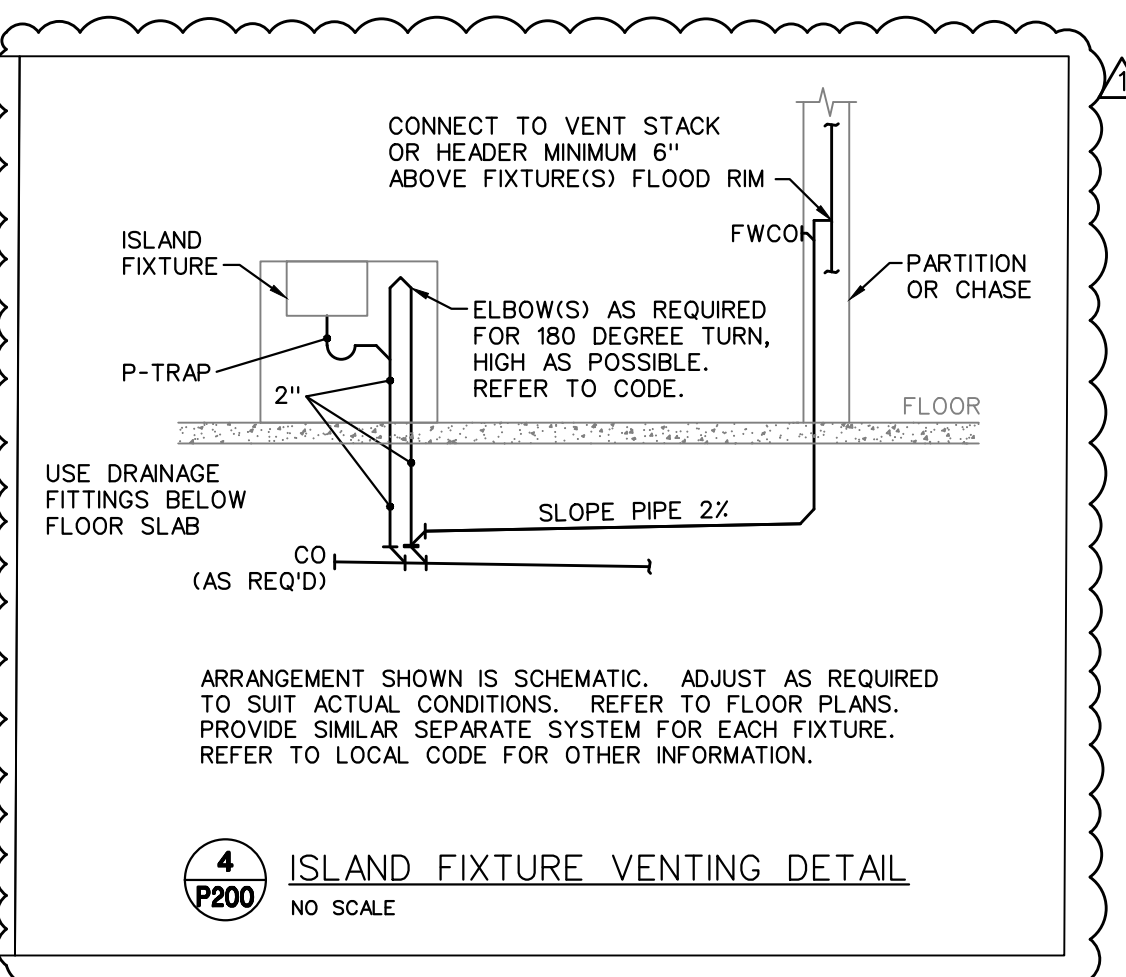
PD003B



2
P200 EXTERIOR WALL PIPE PENETRATION DETAIL
NO SCALE



3
P200 MIXING VALVE DETAIL
NO SCALE



4
P200 ISLAND FIXTURE VENTING DETAIL
NO SCALE

PLUMBING PLAN NOTES

1. EXTEND CW FROM NEAREST CW PIPING OF SAME SIZE OR LARGER.
2. CW PIPING BELOW FLOOR SLAB.
3. 1/2" CW UP THRU FLOOR TO SINK OR DISHWASHER.
4. CW DOWN ALONG COLUMN.
5. 2" W DOWN. SEE "ISLAND FIXTURE VENT DETAIL", THIS SHEET, FOR CONFIGURATION OF WASTE AND VENT PIPING AT ISLAND SINK.
6. 1/2" CW UP THRU FLOOR TO SODA DISPENSER.
7. 1/2" CW TO INSTANTANEOUS WATER HEATER, 1/2" CW AND HW TO SINK FAUCET.
8. 1/2" CW TO INSTANTANEOUS WATER HEATER, 1/2" HW TO DISHWASHER.
9. CONNECT NEW W OR SAN TO EXISTING 4" SAN. FIELD VERIFY EXACT LOCATION AND SIZE.
10. 1/2" CW DOWN IN WALL. INSTALL ON INTERIOR SIDE INSULATION (WARM SIDE).
11. 2" V UP TO ABOVE CEILING.
12. PIPING ABOVE CEILING.
13. EXTEND CONDENSATE DRAINS FROM BEER COOLER TO DAYLIGHT OVER FLOOR SINK.
14. EXTEND DRAIN FROM WINE COOLER, SODA FOUNTAIN OR DISHWASHER TO DAYLIGHT ABOVE FLOOR SINK.
15. 3" VTR.
16. EXISTING PLUMBING IN THIS AREA SHALL REMAIN AS CURRENTLY INSTALLED EXCEPT REPLACE EXISTING FIXTURES WITH NEW. REWORK PLUMBING PIPING AS REQUIRED TO ACCOMMODATE NEW FIXTURES.
17. 1/2" CW UP THRU FLOOR. 1/2" CW TO INSTANTANEOUS WATER HEATER, 1/2" CW AND HW TO SINK FAUCET.
18. 2" V FROM BELOW FLOOR (FROM LOOP VENT).

PLUMBING GENERAL NOTES

- A) ALL FIXTURES USED SPECIFICALLY FOR HANDWASHING PURPOSES (LAVATORIES, HAND SINKS, ETC.) SHALL BE PROVIDED WITH A TEMPERING VALVE TO TEMPER THE HOT WATER TO THE FIXTURE (MAXIMUM OF 105-DEGREES F).
- B) SEE "PLUMBING RISER DIAGRAMS", THIS SHEET, FOR PIPING NOT SHOWN ON THE PLANS.

PLUMBING SYMBOLS

- EXISTING TO REMAIN.
- NEW PIPING WORK.
- DOMESTIC COLD WATER (CW).
- DOMESTIC HOT WATER (HW).
- HOT WATER RECIRCULATION (HWR).
- PLUMBING VENT ABOVE FLOOR (V).
- SANITARY WASTE ABOVE FLOOR (W).
- SANITARY WASTE BELOW FLOOR (W).
- GAS (NATURAL) (NG).
- ELBOW DOWN.
- ELBOW UP.
- TEE DOWN.
- TEE UP.
- CAP.
- PIPE UNION.
- 1/4 TURN SHUT-OFF VALVE.
- CHECK VALVE.
- VENT THRU ROOF (VTR).
- EXISTING TO REMAIN.
- PLAN NOTE DESIGNATION.
- PLAN REVISION DESIGNATION.
- CONNECT TO EXISTING.
- PLUMBING EQUIPMENT DESIGNATION - TOP PORTION IS EQUIPMENT (HW, RTU, ETC.), BOTTOM PORTION IS NO. OR LETTER (SEE APPROPRIATE SCHEDULE).



MACADOODLES
1499 MARKET STREET
LEE'S SUMMIT, MISSOURI



JOB NO.: 22035
DATE: 04/13/2022
REVISIONS:
CITY COMMENTS
05/05/2022
DESIGNED BY: GEG
DRAWN BY: GEG
CHECKED BY: GEG
SHEET NO.

P200