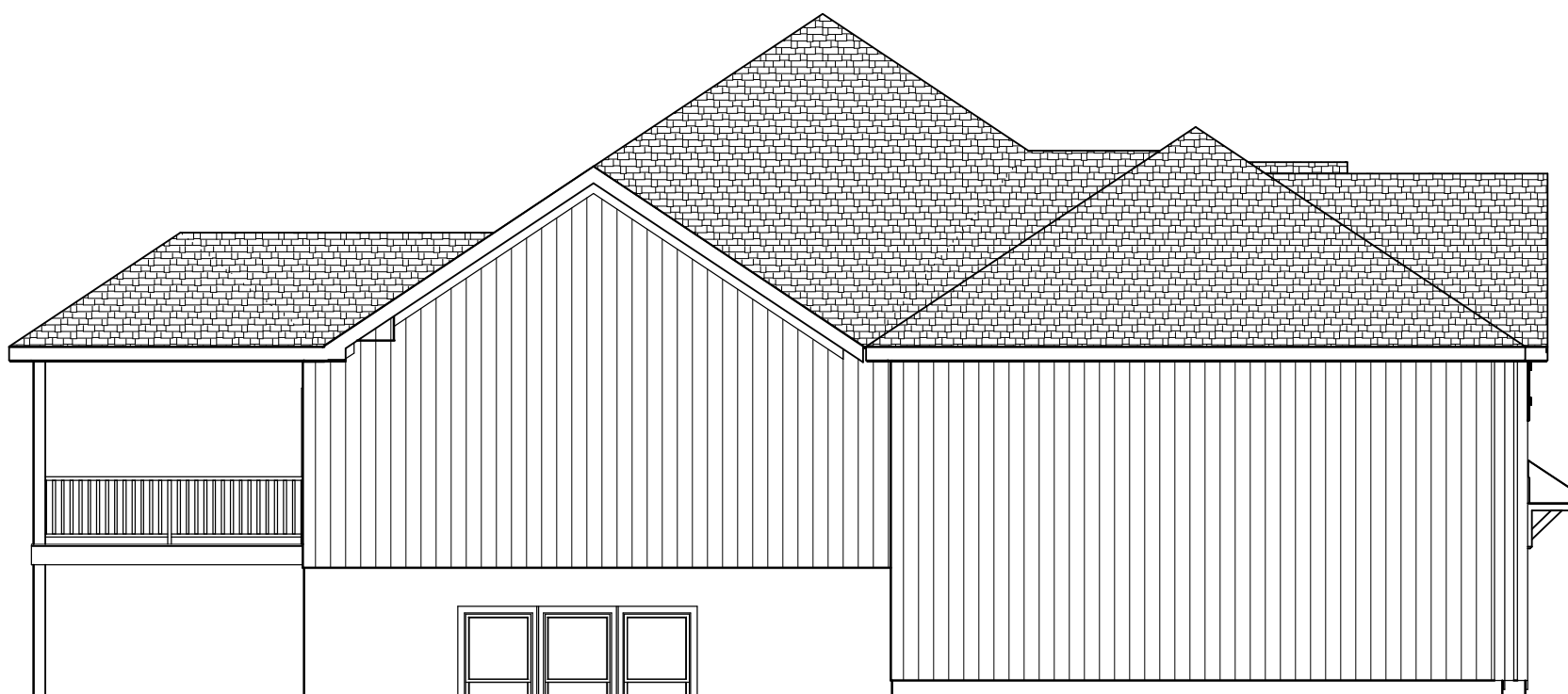




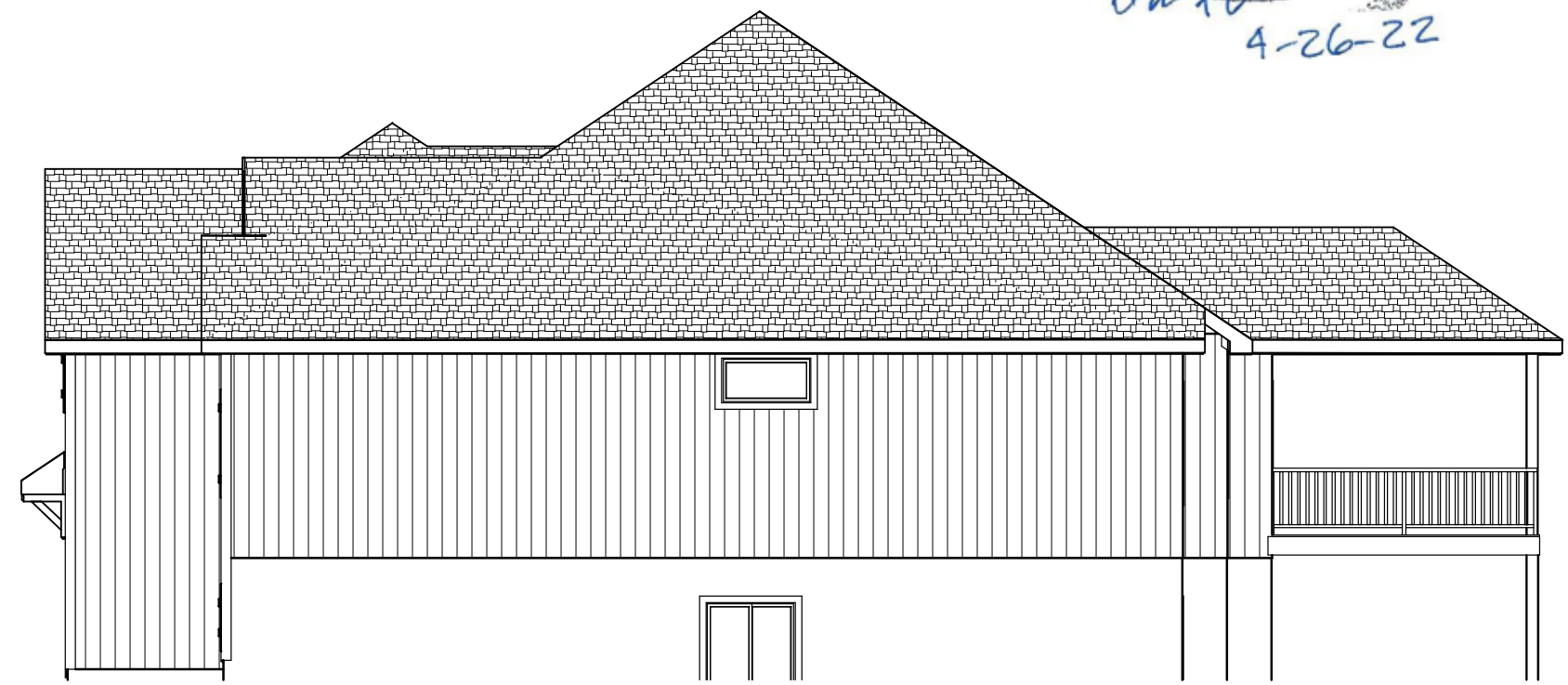
FRONT EL.
STUCCO AND STONE
ELEVATION B



REAR EL.
1/8 = 1-0



LEFT EL.
1/8 = 1-0



RIGHT EL.
1/8 = 1-0



BUILD IN ACCORDANCE WITH
2018 INTERNATIONAL
RESIDENTIAL CODE AND
LOCAL CODES.

TRUMARK HOMES
AUSTIN III
LOT 79 MONTICELLO
1117 NE GOSHEN DR
LEE SUMMIT MO

SCALE
1/4" = 1-0

DATE
4-25-22

PLAN NO.
3786

SHEET NO.
1 OF 5

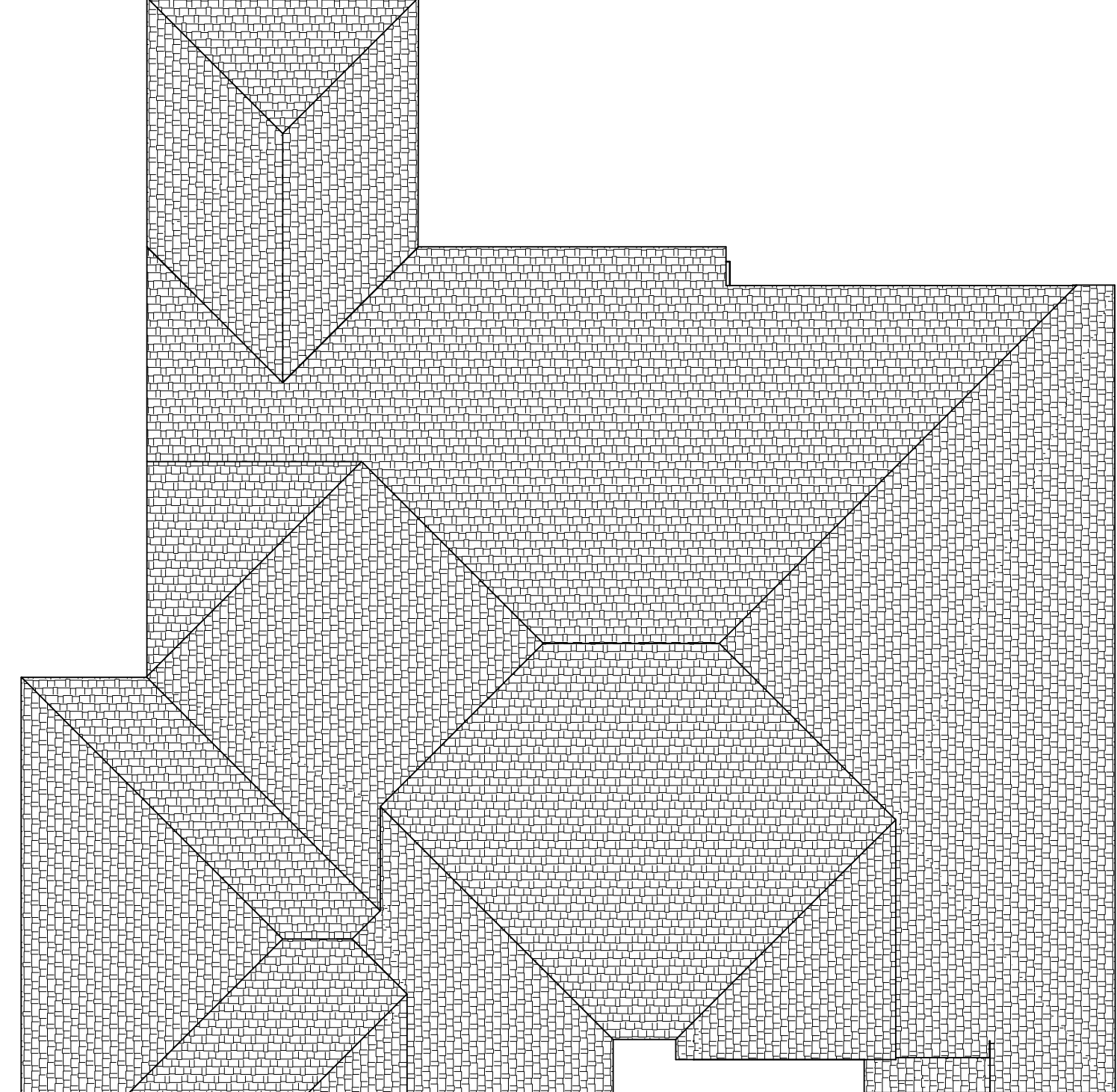
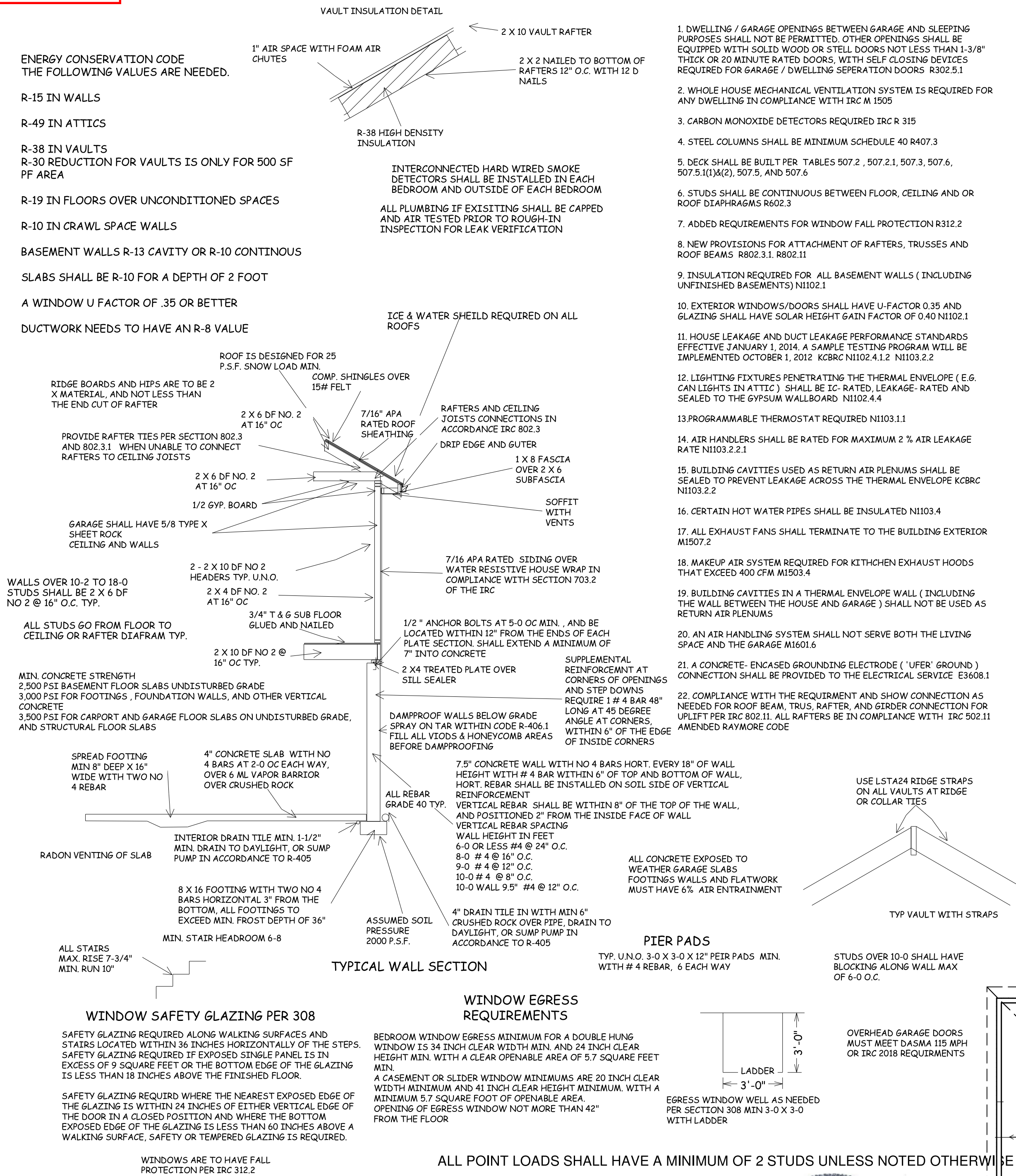
TRUMARK HOMES
AUSTIN III
LOT 79 MONTICELLO
1117 NE GOSHEN DR
LEE SUMMIT MO

DATE
4-25-22

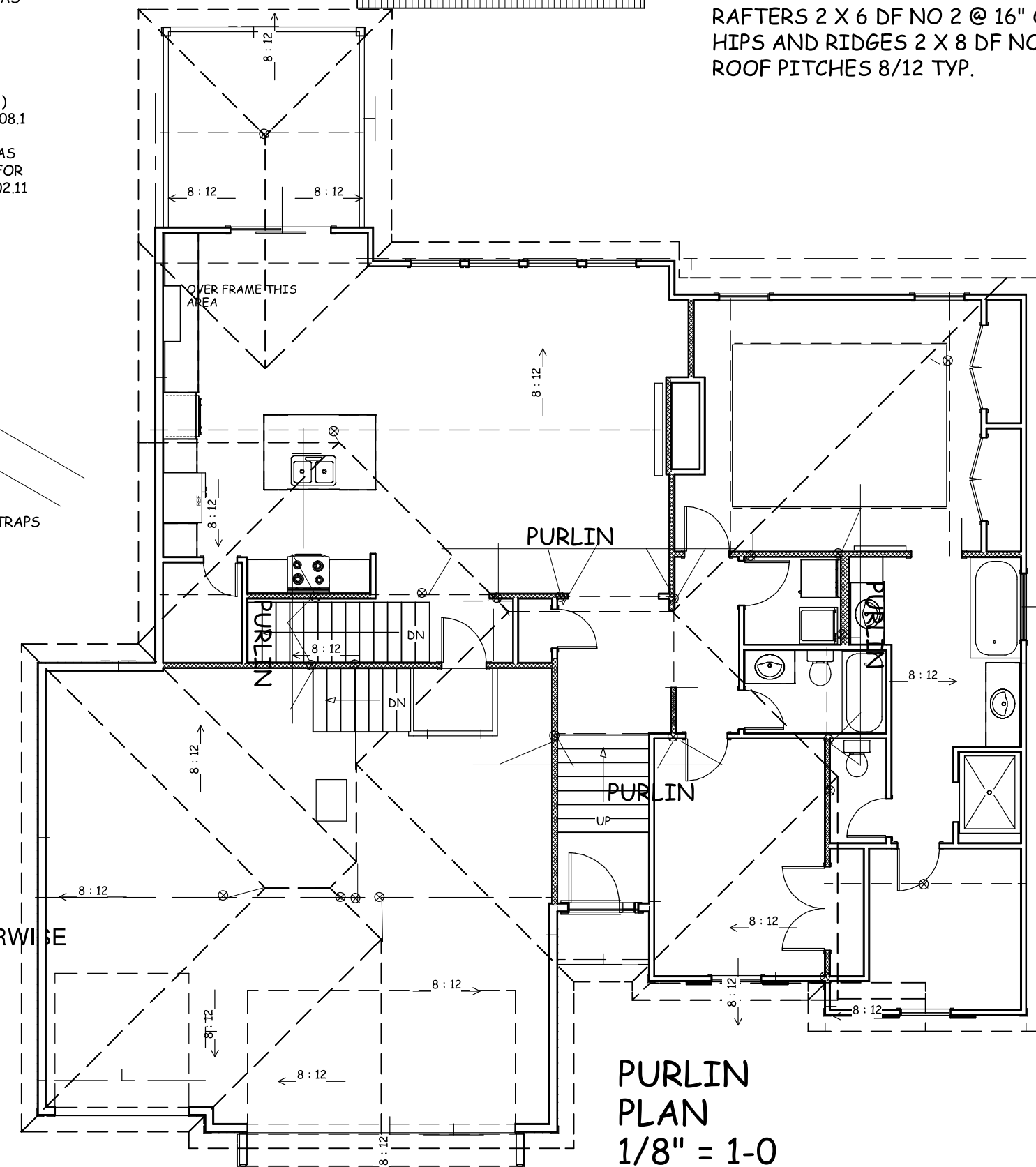
SHEET NO.

2 OF 5





ROOF PLAN
1/8" = 1-0
RAFTERS 2 X 6 DF NO 2 @ 16" O.C.
HIPS AND RIDGES 2 X 8 DF NO 2
ROOF PITCHES 8/12 TYP.



PURLIN
PLAN
1/8" = 1-0

BUILD IN ACCORDANCE WITH
2018 INTERNATIONAL
RESIDENTIAL CODE AND
LOCAL CODES.

TRUMARK HOMES
AUSTIN III
LOT 79 MONTICELLO
1117 NE GOSHEN DR
LEE SUMMIT MO

SCALE
1/4" = 1-0

DATE
4-25-22

PLAN NO.
3786

SHEET NO.

4 OF 5



BUILD IN ACCORDANCE WITH
2018 INTERNATIONAL
RESIDENTIAL CODE AND
LOCAL CODES.

TRUMARK HOMES
AUSTIN III
LOT 79 MONTICELLO
1117 NE GOSHEN DR
LEE SUMMIT MO

SCALE

1/4" = 1-0

DATE

4-25-22

PLAN NO.

3786

SHEET NO.

5 OF 5

TABLE R602.10.3(1)
BRACING REQUIREMENTS BASED ON WIND SPEED

EXPOSURE CATEGORY B 35-FOOT MEAN ROOF HEIGHT 10-FOOT WALL HEIGHT 2 BRACED WALL LINES		MINIMUM TOTAL LENGTH (FEET) OF BRACED WALL PANELS REQUIRED ALONG EACH BRACED WALL LINE ^a				
Ultimate Design Wind Speed (mph)	Story Location	Braced Wall Line Spacing ^b (feet)	Method LIB ^c	Method GB	Methods DWB, WSP, SFB, PFB, PCP, HPS, BV-WSP, ABW, PPF, CS-PF, CS-SFB	Methods CS-WSP, CS-G, CS-PF
≤ 115		10	3.5	3.5	2.0	2.0
		20	6.5	6.5	3.5	3.5
		30	9.5	9.5	5.5	4.5
		40	12.5	12.5	7.0	6.0
		50	15.0	15.0	9.0	7.5
		60	18.0	18.0	10.5	9.0
		10	7.0	7.0	4.0	3.5
		20	12.5	12.5	7.5	6.5
		30	18.0	18.0	10.5	9.0
		40	23.5	23.5	13.5	11.5
		50	29.0	29.0	16.5	14.0
		60	34.5	34.5	20.0	17.0
		10	NP	10.0	6.0	5.0
		20	NP	18.5	11.0	9.0
		30	NP	27.0	15.5	13.0
		40	NP	35.0	20.0	17.0
		50	NP	43.0	24.5	21.0
		60	NP	51.0	29.0	25.0

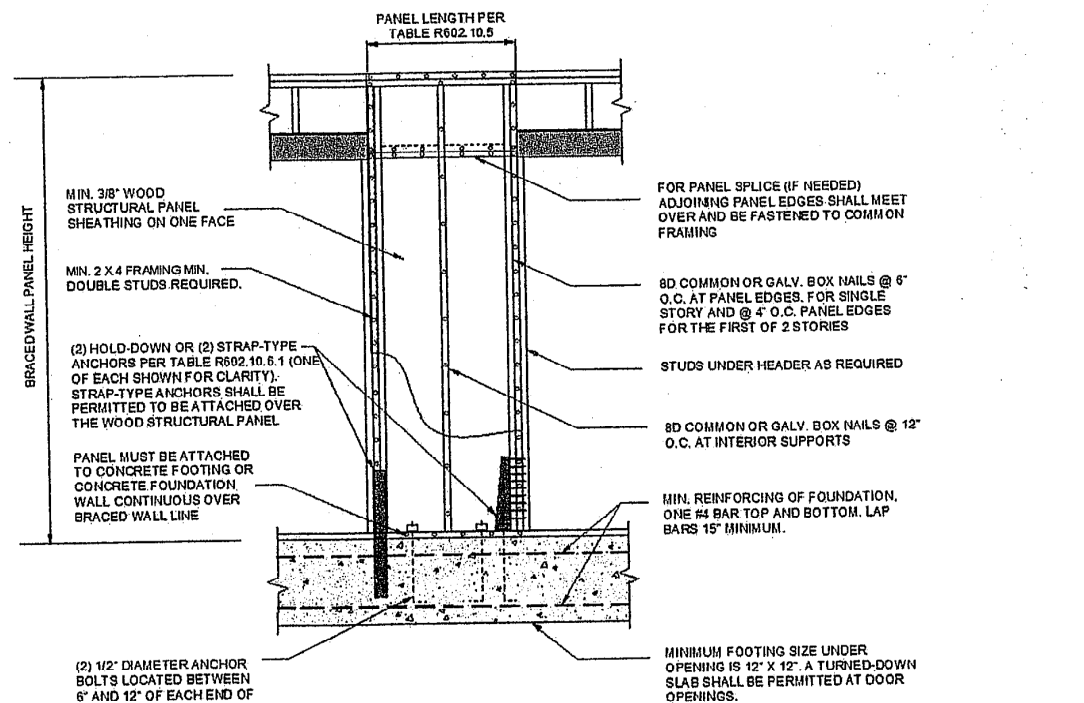


FIGURE R602.10.6.1
METHOD ABW—ALTERNATE BRACED WALL PANEL

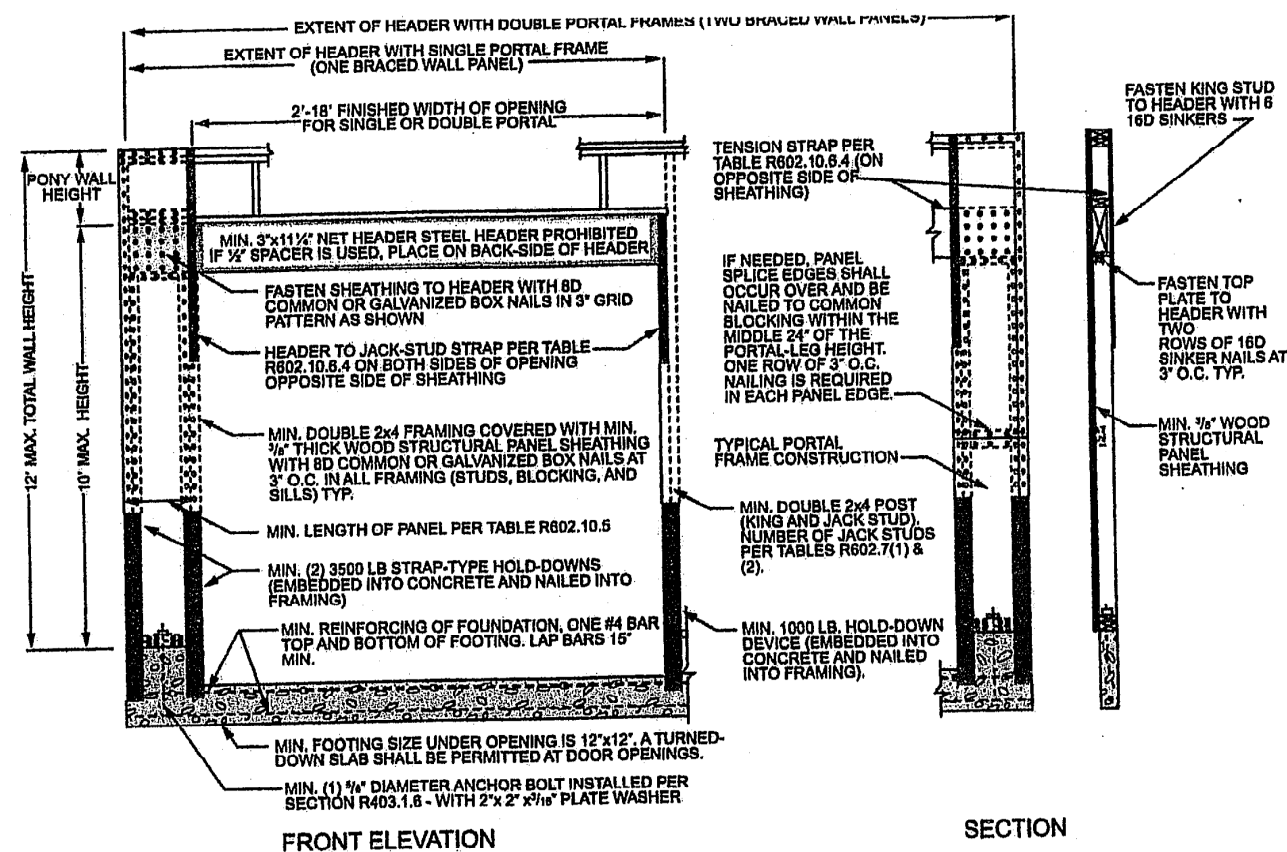


FIGURE R602.10.6.2
METHOD PFH—PORTAL FRAME WITH HOLD-DOWNS

TABLE R602.10.4
BRACING METHODS

METHODS, MATERIAL	MINIMUM THICKNESS	FIGURE	CONNECTION CRITERIA ^a	
			Fasteners	Splicing
LIB Let-in-bracing	1 x 4 wood or approved metal straps at 45° to 60° angles for maximum 16\"/>		Wood: 2-8d common nails or 3-8d (2 1/2\"/>	Wood: per stud and top and bottom plates
DWB Diagonal wood boards	3/4\"/>		2-8d (2 1/2\"/>	Per stud
WSP Wood structural panel (See Section R604)	3/8\"/>		Exterior sheathing per Table R602.3(3) Interior sheathing per Table R602.3(1) or R602.3(2)	6\"/>
BV-WSP ^b Wood structural panels with stone or masonry veneer (See Section R602.10.6.5)	3/16\"/>	See Figure R602.10.6.5	8d common (2 1/2\"/>	4\"/>
SFB Structural fiberboard sheathing	1/2\"/>		1 1/2\"/>	3\"/>
GB Gypsum board	1/2\"/>		Nails or screws per Table R602.3(1) for exterior locations Nails or screws per Table R702.3.5 for interior locations	For all braced wall panel locations: 7\"/>
PFB Particleboard sheathing (See Section R605)	3/4\"/>		For 3/4\"/>	3\"/>
PCP Portland cement plaster	See Section R703.7 for maximum 16\"/>		1 1/2\"/>	6\"/>
HPS Hardboard panel siding	3/16\"/>		0.092\"/>	4\"/>
ABW Alternate braced wall	3/8\"/>		See Section R602.10.6.1	See Section R602.10.6.1

TABLE R602.10.5
MINIMUM LENGTH OF BRACED WALL PANELS

METHOD (See Table R602.10.4)		MINIMUM LENGTH ^a (Inches)					CONTRIBUTING LENGTH (Inches)
		Wall Height					
		8 feet	9 feet	10 feet	11 feet	12 feet	
DWB, WSP, SFB, PBS, FCP, HPS, BV-WSP		48	48	48	53	58	Actual ^b
GB		48	48	48	53	58	Double sided = Actual Single sided = 0.5 × Actual
LIB		55	62	69	NP	NP	Actual ^b
ABW	SDC A, B and C, ultimate design wind speed < 140 mph	28	32	34	38	42	48
	SDC D ₁ , D ₁ and D ₂ ultimate design wind speed < 140 mph	32	32	34	NP	NP	
CS-G		24	27	30	33	36	Actual ^b
CS-WSP, CS-SFB	Adjacent clear opening height (Inches)						Actual ^b
	≤ 64	24	27	30	33	36	
	68	26	27	30	33	36	
	72	27	27	30	33	36	
	76	30	29	30	33	36	
	80	32	30	30	33	36	
	84	35	32	32	33	36	
	88	38	35	33	33	36	
	92	43	37	35	35	36	
	96	48	41	38	36	36	
	100	—	44	40	38	38	
	104	—	49	43	40	39	
	108	—	54	46	43	41	
	112	—	—	50	45	43	
	116	—	—	55	48	45	
	120	—	—	60	52	48	
	124	—	—	—	56	51	
	128	—	—	—	61	54	
	132	—	—	—	66	58	
	136	—	—	—	—	62	
	140	—	—	—	—	66	
144	—	—	—	—	72		
METHOD (See Table R602.10.4)		Portal header height					
PFH	Supporting roof only	16	16	16	Note c	Note c	48
	Supporting one story and roof	24	24	24	Note c	Note c	
	PFG	24	27	30	Note d	Note d	1.3 × Actual ^b
CS-PF	SDC A, B and C	16	18	20	Note e	Note e	1.3 × Actual ^b
	SDC D ₁ , D ₂ and D ₃	16	18	20	Note e	Note e	

For SI: 1 inch = 25.4 mm, 1 foot = 304.8 mm, 1 mile per hour = 0.447 m/s.
NP = Not Permitted.
a. Linear interpolation shall be permitted.
b. Use the actual length where it is greater than or equal to the minimum length.
c. Maximum header height for PFH is 10 feet in accordance with Figure R602.10.6.2, but wall height shall be permitted to be increased to 12 feet with pony wall.
d. Maximum header height for CS-PF is 10 feet in accordance with Figure R602.10.6.3, but wall height shall be permitted to be increased to 12 feet with pony wall.
e. Maximum header height for CS-PF is 10 feet in accordance with Figure R602.10.6.4, but wall height shall be permitted to be increased to 12 feet with pony wall.

TABLE R602.10.4—continued
BRACING METHODS

METHODS, MATERIAL	MINIMUM THICKNESS	FIGURE	CONNECTION CRITERIA ^a	
			Fasteners	Splicing
PFH Portal frame with hold-downs	3/4\"/>		See Section R602.10.6.2	See Section R602.10.6.2
PFH Portal frame at garage	3/16\"/>		See Section R602.10.6.3	See Section R602.10.6.3
CS-WSP Continuously sheathed wood structural panel	3/8\"/>		Exterior sheathing per Table R602.3(3) Interior sheathing per Table R602.3(1) or R602.3(2)	6\"/>
CS-G ^b Continuously sheathed wood structural panel adjacent to garage openings	3/8\"/>		See Method CS-WSP	See Method CS-WSP
CS-PF Continuously sheathed portal frame	3/16\"/>		See Section R602.10.6.4	See Section R602.10.6.4
CS-SFB ^c Continuously sheathed structural fiberboard	1/2\"/>		1 1/2\"/>	3\"/>

For SI: 1 inch = 25.4 mm, 1 foot = 304.8 mm, 1 degree = 0.0175 rad, 1 pound per square foot = 47.8 N/m², 1 mile per hour = 0.447 m/s.
a. Adhesive attachment of wall sheathing, including Method GB, shall not be permitted in Seismic Design Categories C, D₁, D₂ and D₃.
b. Applies to panels next to garage door opening where supporting gable and wall or roof load only. Shall only be used on one wall of the garage. In Seismic Design Categories D₁, D₂ and D₃, roof covering dead load shall not exceed 5 psf.
c. Garage openings adjacent to a Method CS-G panel shall be provided with a header in accordance with Table R602.7(1). A full-height clear opening shall not be permitted adjacent to a Method CS-G panel.
d. Method CS-SFB does not apply in Seismic Design Categories D₁, D₂ and D₃.
e. Method applies to detached one- and two-family dwellings in Seismic Design Categories D₁ through D₂ only.

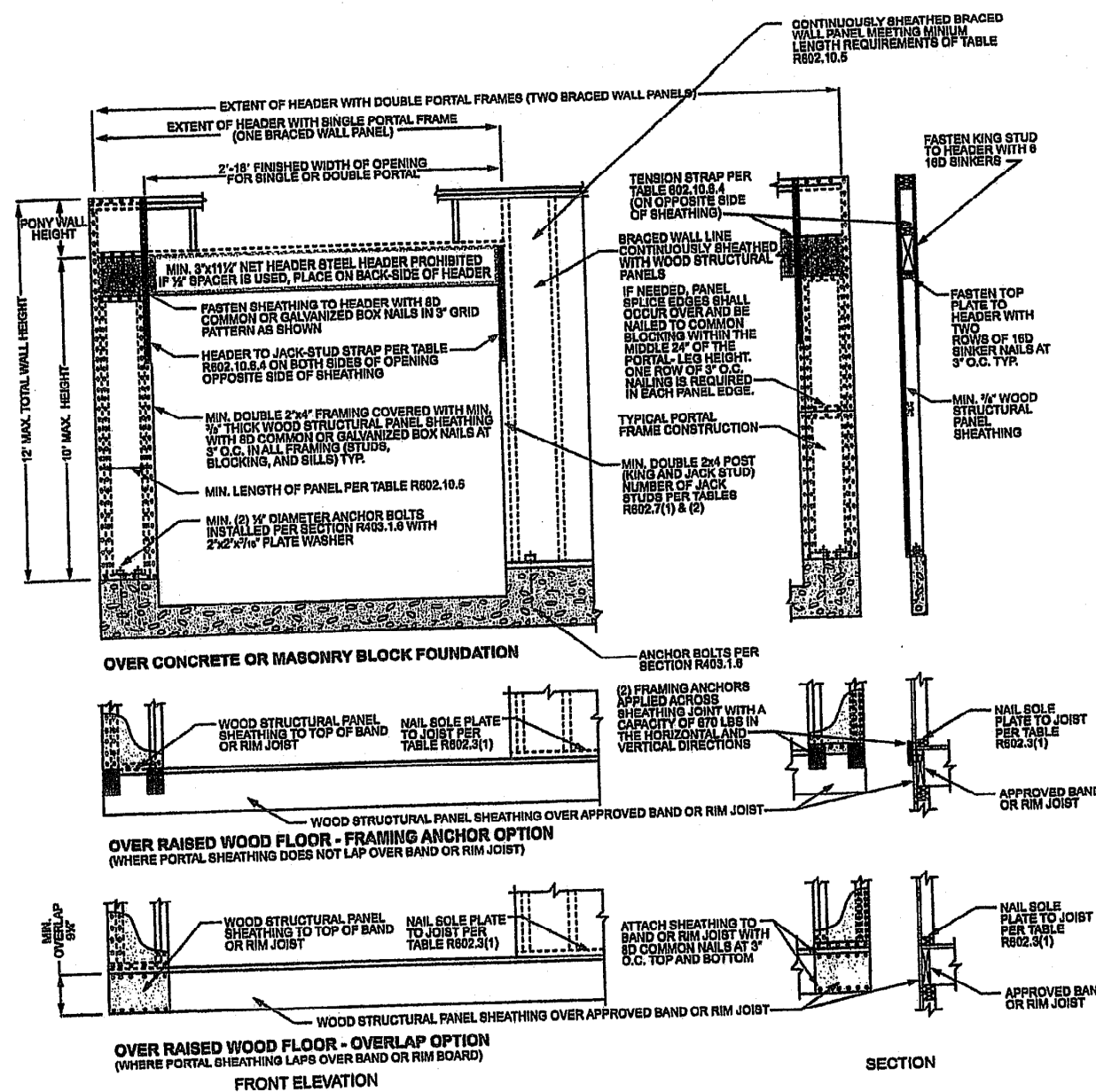


FIGURE R602.10.6.4
METHOD CS-PF—CONTINUOUSLY SHEATHED PORTAL FRAME PANEL CONSTRUCTION

