

NOTE:

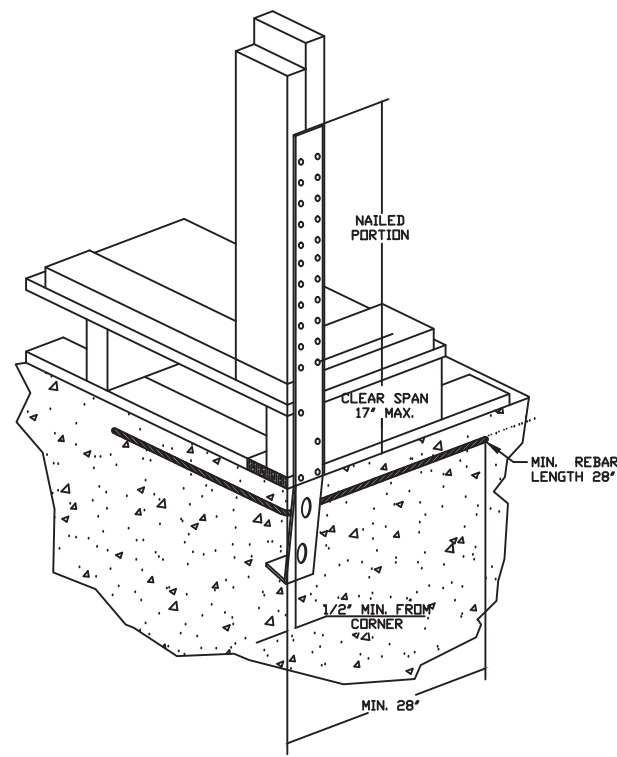
ALL CONSTRUCTION SHALL CONFORM TO 2018 INTERNATIONAL RESIDENTIAL CODE OR ATTACHED ENGINEER SPECIFICATIONS WHERE APPLICABLE.

FOUNDATION NOTES:
ALL FOOTINGS MEET OR EXCEED MINIMUM FROST DEPTH OF 36".
SOIL BEARING CAPACITY SHALL BE 1500 PSF.
COMPRESSIVE STRENGTH OF CONCRETE F'C COMPRESSIVE STRENGTH SHALL BE AS SPECIFIED IN IRC TABLE R402.2. REQUIRED AIR ENTRAINMENT SHALL BE 5-7%.
ALL FOUNDATION WALLS ENCLOSING BELOW GRADE SPACE SHALL BE DAMPPROOFED. DAMPPROOFING SHALL EXTEND FROM THE EDGE OF THE FOOTING TO THE FINISHED GRADE (R-406.1). METHOD OF DAMPPROOFING OR WATERPROOFING SHALL BE A MINIMUM 6-MIL THICK MOISTURE BARRIER OVER POROUS GRAVEL BASE UNDER BASEMENT FLOOR SLAB PER R405.2.2. LAP JOINTS SHALL BE A MINIMUM 6".
FOUNDATION WALLS SHALL BE DAMPPROOFED PER IRC SECTION R406.
FOUNDATION DRAINAGE WILL BE IN ACCORDANCE WITH WITH IRC SECTION R405.
BASEMENT EGRESS OPENINGS SHALL BE IN ACCORDANCE WITH IRC SECTION R310.1.
ALL INTERIOR FOOTINGS OF LOAD BEARING WALLS AND COLUMNS SHALL BE ISOLATED FROM THE BASEMENT FLOOR SLAB.
ALL ANCHOR BOLTS SHALL NOT BE SPACED MORE THAN 6' O.C. AND BE EMBEDDED INTO THE CONCRETE A MINIMUM OF 7'.

ALL UNMARKED HEADERS SHALL BE A MINIMUM #2 DOUGLAS FIR LARCH (2) 2 X 10 ON LOAD BEARING WALLS.

BACKFILL SHALL NOT BE PLACED AGAINST THE WALL UNTIL THE WALL HAS SUFFICIENT STRENGTH OR HAS BEEN SUFFICIENTLY BRACED TO PREVENT DAMAGE BY BACKFILL.

IF BASEMENT SLAB ELEVATION IS ABOVE GRADE CONSULT ENGINEER.



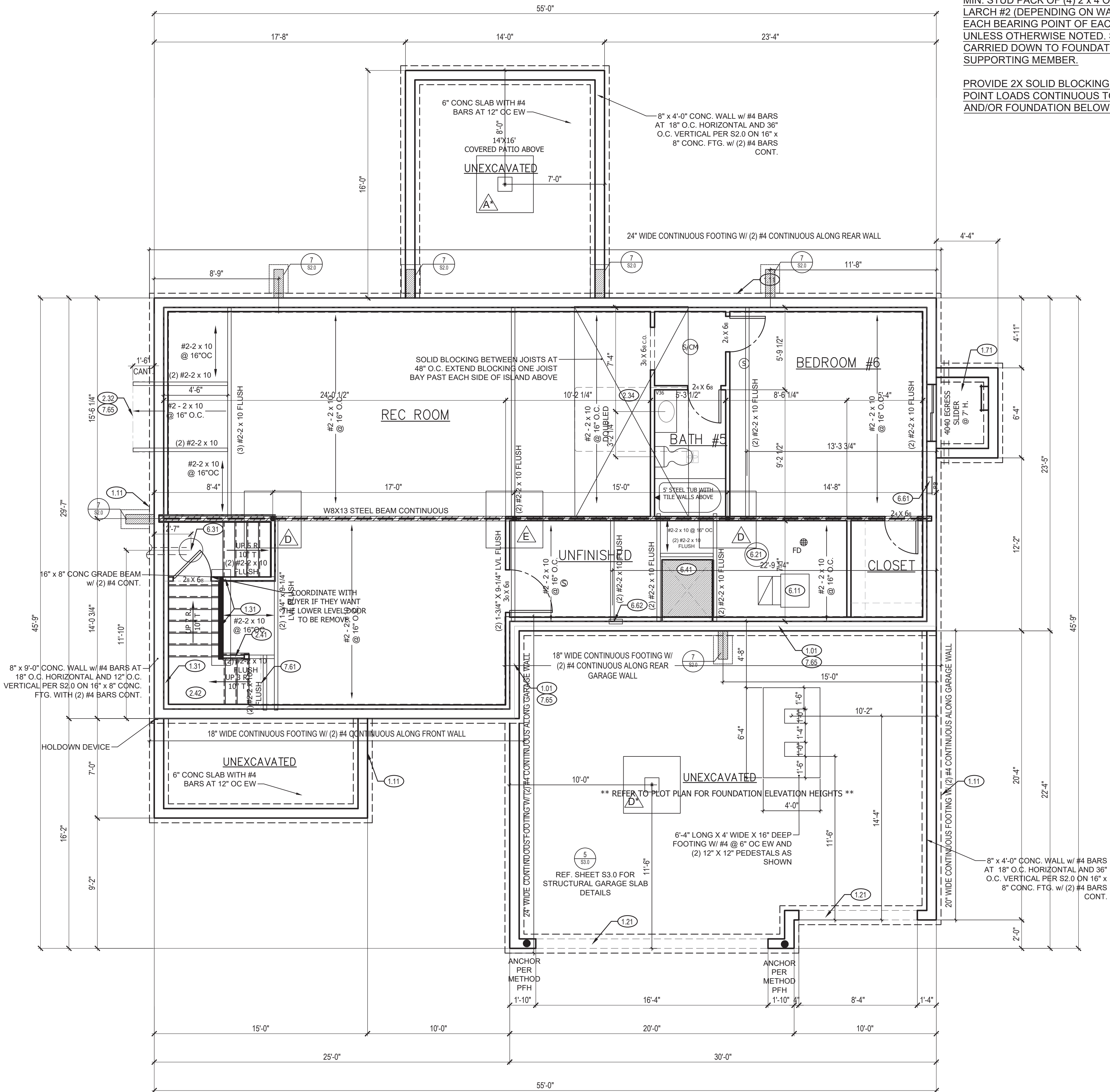
HOLDOWN DEVICE:
TYPICAL SHD14RJ CORNER INSTALLATION
N.T.S.

STEEL BEAM FLANGE WIDTH:
W8 x 13 - 4"

ISOLATED FOOTINGS AND COLUMN PADS				
SYM	PIER PAD SIZE	DEPTH	MINIMUM REINFORCEMENT GRADE 60 KSI STEEL	SCHEDULE 40 STEEL COLUMN, MIN FY = 35 KSI
A	30"x30"	1'-0"	(5) #4 BAR E.W.	3" DIAMETER
B	36"x36"	1'-0"	(6) #4 BAR E.W.	3" DIAMETER
C	42"x42"	1'-2"	(7) #4 BAR E.W.	3" DIAMETER
D	48"x48"	1'-4"	(8) #4 BAR E.W.	3" DIAMETER
E	54"x54"	1'-4"	(9) #4 BAR E.W.	3.5" DIAMETER
F	60"x60"	1'-6"	(10) #4 BAR E.W.	3.5" DIAMETER
ANY SIZE FOOTING WITH AN (*)				NO COLUMN NEEDED

ISOLATED FOOTINGS AND COLUMN PADS			
SYM	PIER DIAMETER	DEPTH	MINIMUM REINFORCEMENT GRADE 40 KSI STEEL
G	12"	3'-0"	(4) VERTICAL #4
H	16"	3'-0"	(4) VERTICAL #4
I	18"	3'-0"	(4) VERTICAL #4
K	24"	3'-0"	(4) VERTICAL #4
L	28"	3'-0"	(4) VERTICAL #4

COLUMN AND PAD SIZES ARE FOR A MAXIMUM COLUMN HEIGHT OF 10'. COLUMNS GREATER THAN 10' REQUIRE A SEPARATE ENGINEERED DESIGN. FOOTINGS A-F SPACING OF 6' O.C. WITH 3" CLEAR COVER.



GIRDER TRUSS BEARING:
MIN. STUD PACK OF (4) 2 x 4 OR (4) 2 x 6 DOUGLAS FIR LARCH #2 (DEPENDING ON WALL THICKNESS) BELOW EACH BEARING POINT OF EACH GIRDER TRUSS, UNLESS OTHERWISE NOTED. STUD PACKS SHALL BE CARRIED DOWN TO FOUNDATION OR LOAD SUPPORTING MEMBER.

PROVIDE 2X SOLID BLOCKING SUPPORT BELOW ALL POINT LOADS CONTINUOUS TO BEARING STRUCTURE AND/OR FOUNDATION BELOW.

FOUNDATION PLAN NOTES

- 1.01 HOLD SILL PLATE BACK 4"
- 1.11 CONTINUOUS CONCRETE FOOTING
- 1.21 RECESS TOP OF FOUNDATION WALL
- 1.31 2X4 STUD WALL WITH TREATED SILL PLATE
- 1.71 CONCRETE WINDOW WELL FOR EGRESS WITH LADDER. PROVED SLEEVE THROUGH WALL FOR FOUNDATION DRAIN. TOP OF WINDOW WELL TO BE 3" BELOW TOP OF FOUNDATION.
- 2.32 INSULATE CANTILEVER AS REQUIRED PRIOR TO BLOCKING
- 2.34 PROVIDE ADDITIONAL BRACING FOR ISLAND ABOVE.
- 2.41 CURB STAIR SYSTEM WITH OPEN HANDRAILS
- 2.42 FIRE RATED SHEETROCK UNDER STAIRS
- 6.11 DIRECT FURNACE, FUEL BURNING APPLIANCES SHALL BE DIRECT VENTED TO EXTERIOR FOR COMBUSTION AIR.
- 6.21 HOT WATER HEATER WITH THERMAL EXPANSION CONTROL DEVICE
- 6.31 SUMP PIT AND PUMP. PROVIDE ELECTRICAL GFCI PROTECTION. PROVIDE SLEEVE THROUGH FOOTING.
- 6.41 HVAC CHASE ABOVE
- 6.61 200 AMP ELECTRICAL PANEL. LOCATION TO BE DETERMINED ON SITE.
- 6.62 UFER GROUND- VERIFY LOCATION WITH PROJECT MANAGER.
- 7.61 DASHED LINE REPRESENTS STAIRS ABOVE
- 7.65 LINE OF FLOOR ABOVE

RELEASE FOR CONSTRUCTION
AS NOTED FOR PLAN REVIEW
DEVELOPMENT SERVICES
LEE'S SUMMIT, MISSOURI

04/29/2022

CPG DBA



120 SE 30TH ST.
LEE'S SUMMIT, MO 64082
816-246-6700

COPYRIGHT 2017

THIS DRAWING HAS BEEN PREPARED BY SUMMIT HOMES, OR UNDER THEIR DIRECT SUPERVISION AS AN INSTRUMENT OF SERVICE AND IS INTENDED FOR USE ONLY ON THIS PROJECT. ALL DRAWINGS, SPECIFICATIONS, AND DESIGNS, INCLUDING THE OVERALL LAYOUT, FORM, AND COMPOSITION OF SPACES ARE PROTECTED BY COPYRIGHT REGISTERED TO CPG, INC. ANY REPRODUCTION, USE, OR DISCLOSURE OF THE INFORMATION CONTAINED HEREIN WITHOUT THE WRITTEN CONSENT FROM CPG, INC. DBA SUMMIT HOMES EXCEPT AS REQUIRED FOR BIDDING AND CONSTRUCTION OF THIS PROJECT IS STRICTLY PROHIBITED.

ADDRESS:
2114 NW KILLARNEY LN
LEE'S SUMMIT, MO

WINCHESTER
MODERN PRAIRIE
MASTER PLAN

PROFESSIONAL SEAL



EVERSTEAD IS RESPONSIBLE FOR STRUCTURAL SPECIFICATIONS ONLY. ARCHITECTURAL PLANS WERE PRODUCED BY OTHERS.

EVERSTEAD
3741 NE TROON DRIVE
SUITE 200
LEE'S SUMMIT, MO 64064
816-399-4901

DRAWN BY:
C.HOOPER

ISSUE DATE:
03.17.21

SHEET NUMBER:

A3.0

LOWER LEVEL FINISH + 1167 SF

FOUNDATION PLAN 1
SCALE: 1/4" = 1'-0"