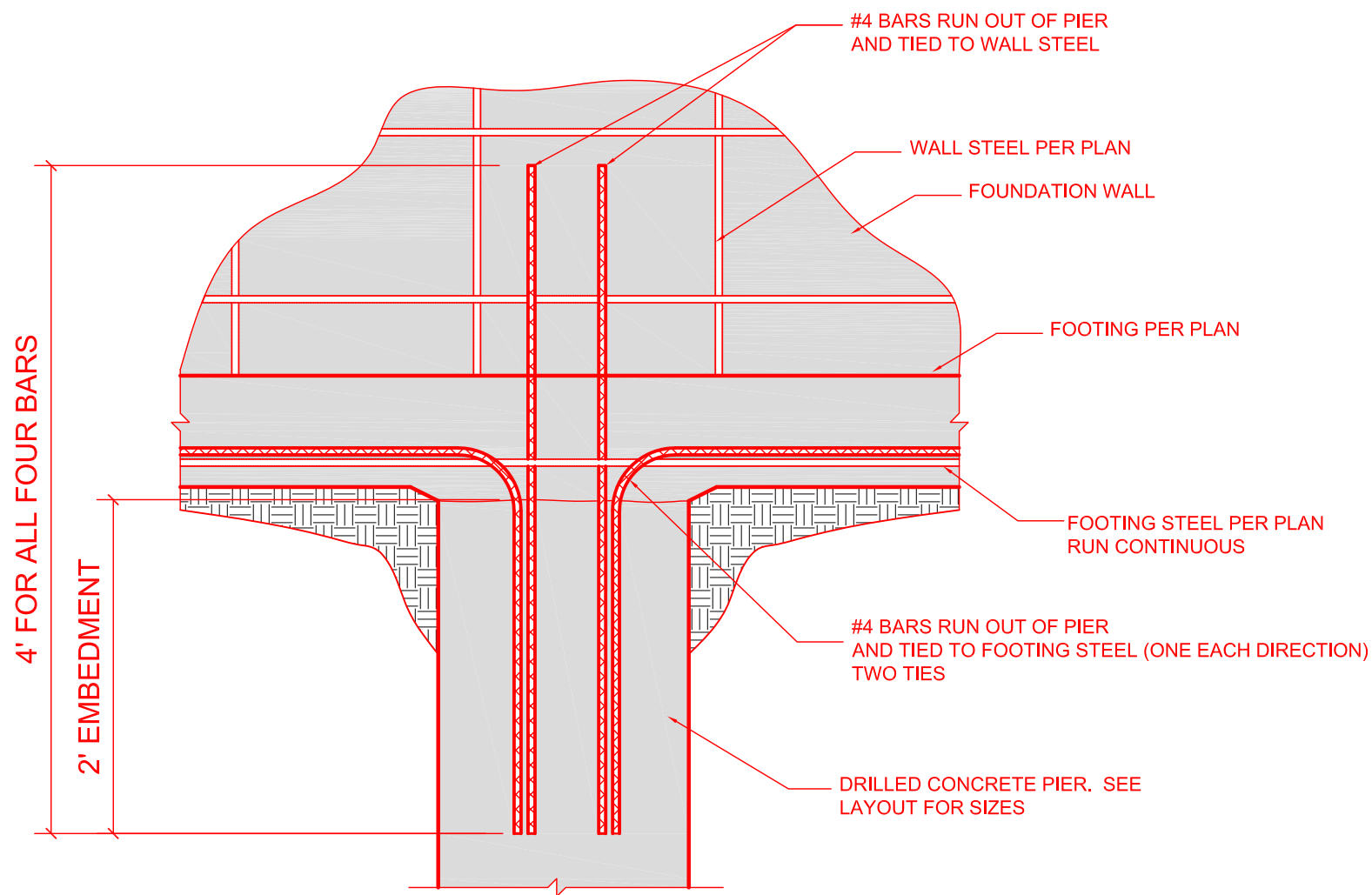
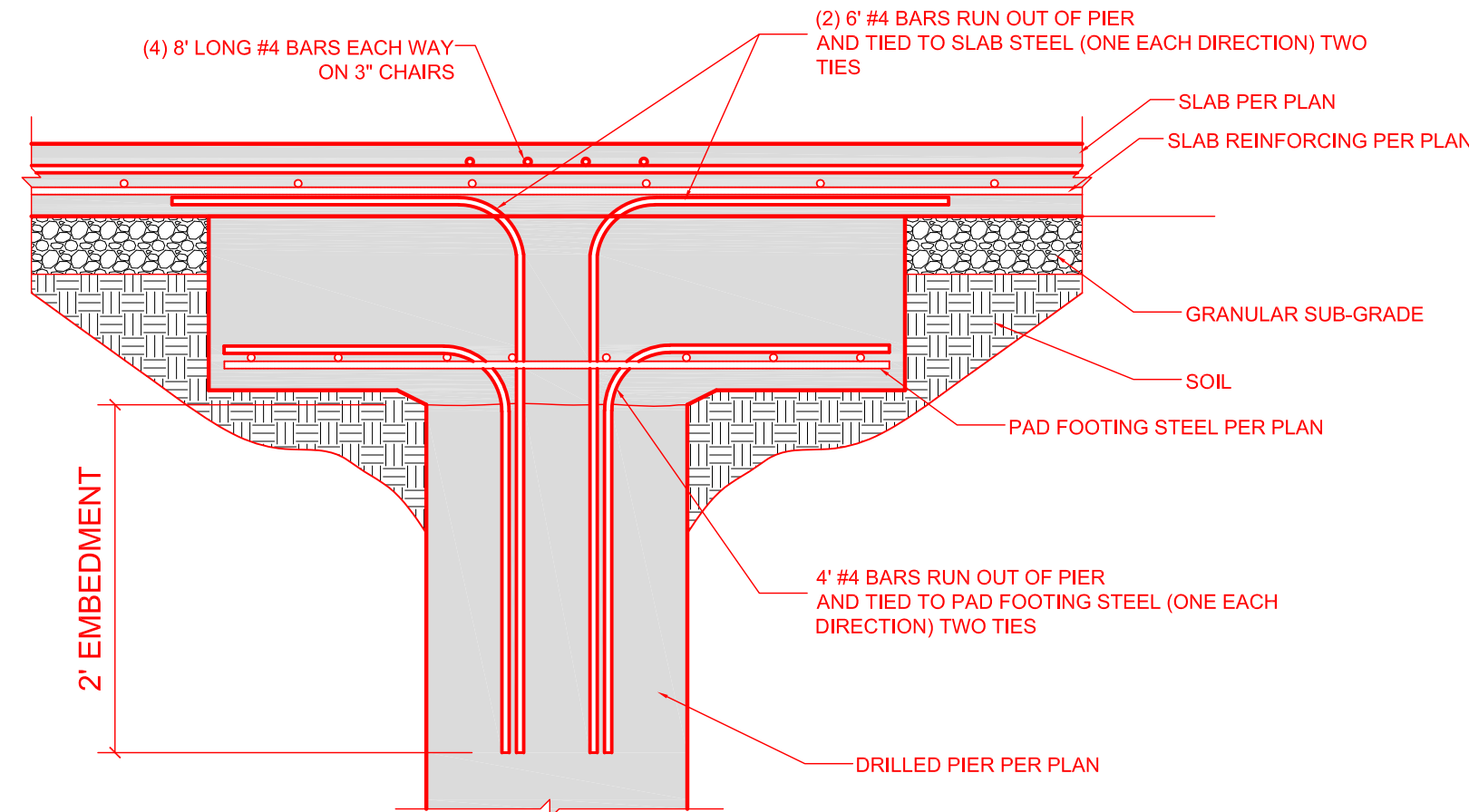


PIER TO STRUCTURAL SLAB DETAIL
SCALE: 1" = 1'-0"



PIER TO FOUNDATION WALL DETAIL
SCALE: 1" = 1'-0"



PIER TO COLUMN PAD DETAIL
SCALE: 1" = 1'-0"

CONTRACTUAL BENEFIT: HD ENGINEERING & DESIGN HAS PRODUCED OR WORKED ON THESE DRAWINGS IN THE INTEREST OF OUR CLIENT. NO CONTRACTUAL OBLIGATION OR BENEFIT IS ASSUMED BETWEEN HD ENGINEERING & DESIGN AND ANY OTHER ENTITY.

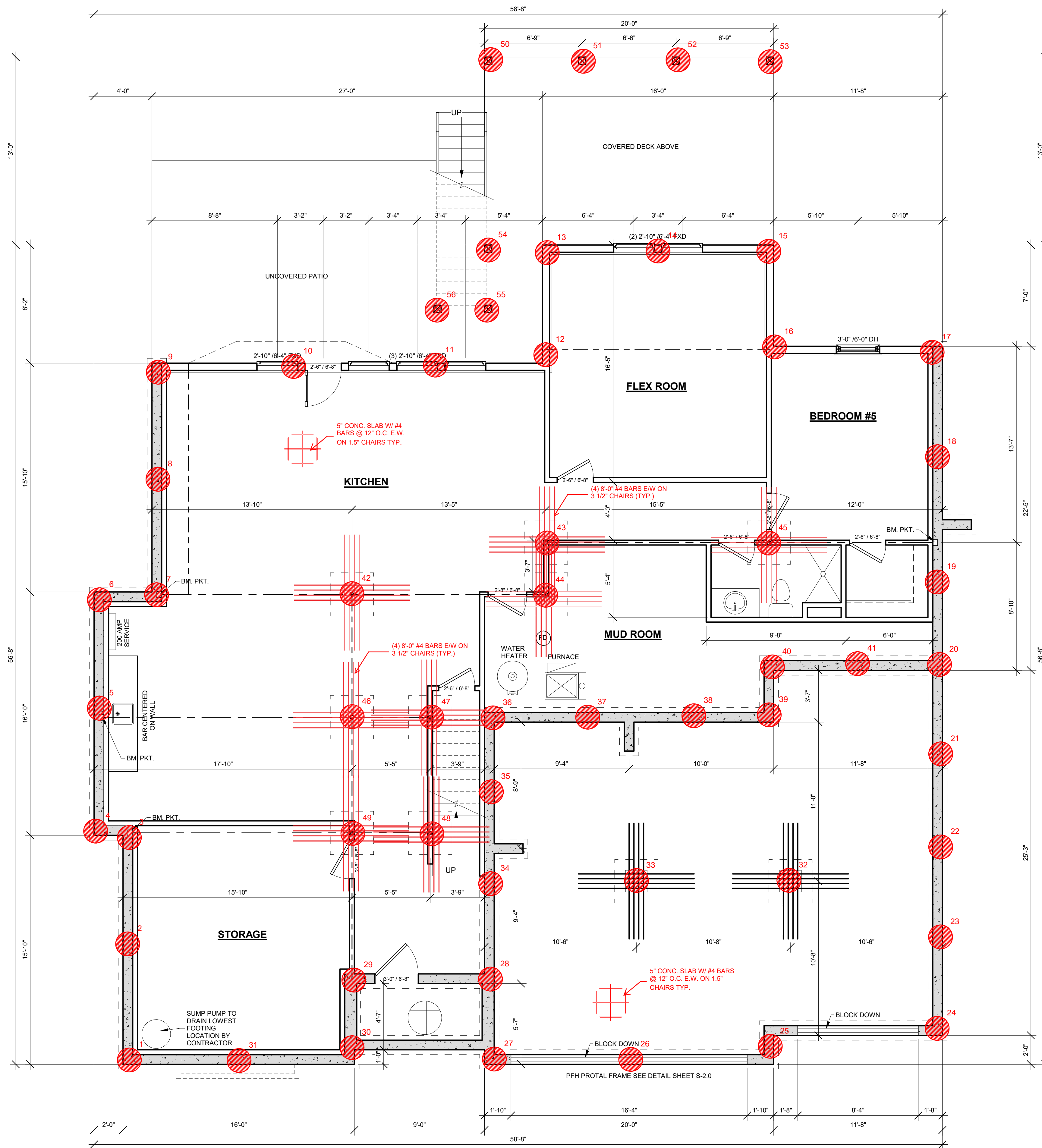
EXISTING CONDITIONS: HD ENGINEERING & DESIGN WILL ONLY BE HELD LIABLE FOR THESE DRAWINGS. HD ENGINEERING & DESIGN WILL NOT BE HELD LIABLE FOR EXISTING BUILDING STRUCTURES, SITE CONDITIONS, EXISTING CONSTRUCTION ELEMENTS, OR ANY OTHER DOCUMENTS, DRAWINGS, OR OTHER INSTRUMENTS RELATED TO OR INTENDED TO BE USED FOR ANY PART OF THIS PROJECT.

OUR DESIGN ASSUMES THAT THE BEARING CAPACITY OF THE SHALE, LIMESTONE, OR SANDSTONE SHALL BE A MINIMUM OF 8000 PSF.

A PIER PLAN OF THIS NATURE IS ONLY INTENDED TO PROVIDE EQUIVALENT BEARING FOR GRAVITY LOADS. NO MEASURES HAVE BEEN TAKEN TO RESIST UPLIFT DUE TO THE EFFECTS OF EXPANSIVE SOIL OR LATERAL RESTRAINT DUE TO SITE STABILITY.

- 57 PIERS TOTAL FOR HOUSE SUPPORT
- PIERS ARE TO BE 18"
- PIERS TO TERMINATE SHALE, SANDSTONE OR LIMESTONE.

*THIS PIER DESIGN WAS MADE AT THE CLIENT REQUEST HD ENGINEERING HAS NOT VISITED THE SITE. THIS PIER DESIGN DOES NOT ACCOUNT FOR ANY GLOBAL STABILITY PROBLEMS THAT THE SITE MAY HAVE. HD ENGINEERING RECOMMENDS THAT A GEOTECHNICAL FIRM REVIEW AND ASSESS THE SITE TO VERIFY THAT HELICAL PIERS ARE SUITABLE FOR THE SITE CONDITIONS AND SOIL BEARING.



PIER PLAN
SEE FOUNDATION PLAN FOR DIMENSIONS

THIS PLAN HAS BEEN DESIGNED TO
CONFIRM WITH THE 2018 IRC

THIS DOCUMENT CONTAINS
COPYRIGHTED MATERIAL AND
CONFIDENTIAL INFORMATION
BELONGING TO HD ENGINEERING.
UNAUTHORIZED USE, DISCLOSURE,
REPRODUCTION, OR DUPLICATION OF
ANY OF THE INFORMATION
CONTAINED HEREIN MAY RESULT IN
LIABILITY UNDER APPLICABLE LAW.

HD ENGINEERING & DESIGN, INC
11656 W. 75TH STREET
SHAWNEE, KS 66214
WWW.HDENGINEERS.COM
913.631.2222
SERVICE@HDENGINEERS.COM



WOOD BROTHERS CONSTRUCTION
DURANGO-2 LOT 93 SVF PIER DESIGN
3104 SW SUMMIT VIEW TRAIL LEE'S SUMMIT, MO

STRUCTURAL DETAILS & NOTES

RELEASE FOR CONSTRUCTION
AS NOTED FOR PLAN REVIEW
DEVELOPMENT SERVICES
LEE'S SUMMIT, MISSOURI
04/27/2022

HD#:	43348	
DATE:	04/13/2022	
CHECKED BY:	CLS	
NO.	ISSUE/REVISION	Revision Date