



HD Engineering & Design

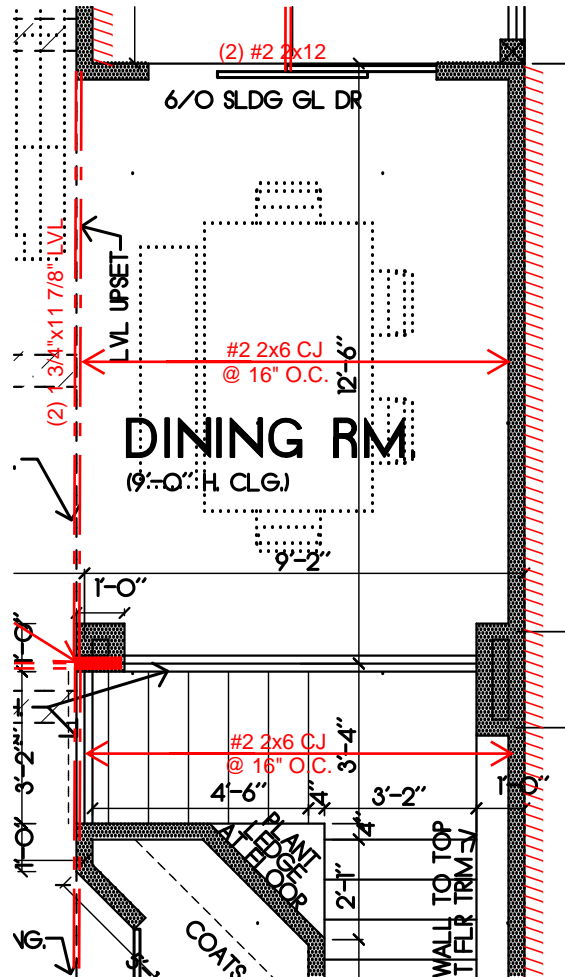
Solutions for all your engineering and design needs

FRAMING ADENDUM

4/25/2022

SAB HOMES

Re: WESTHAMPTON (HF23)
2617 SW HOOK FARM DR.
LEE'S SUMMIT, MO



DINING FRAMING ALTERNATE



THIS DOCUMENT CONTAINS
COPYRIGHTED MATERIAL AND
CONFIDENTIAL INFORMATION
BELONGING TO HD ENGINEERING.
UNAUTHORIZED USE, DISCLOSURE,
DISSEMINATION, OR DUPLICATION OF
ANY OF THE INFORMATION
CONTAINED HEREIN MAY RESULT IN
LIABILITY UNDER APPLICABLE LAW.

STRUCTURAL REVIEW
HD ENGINEERING & DESIGN
HD: 42607 DATE: 4/25/2022