

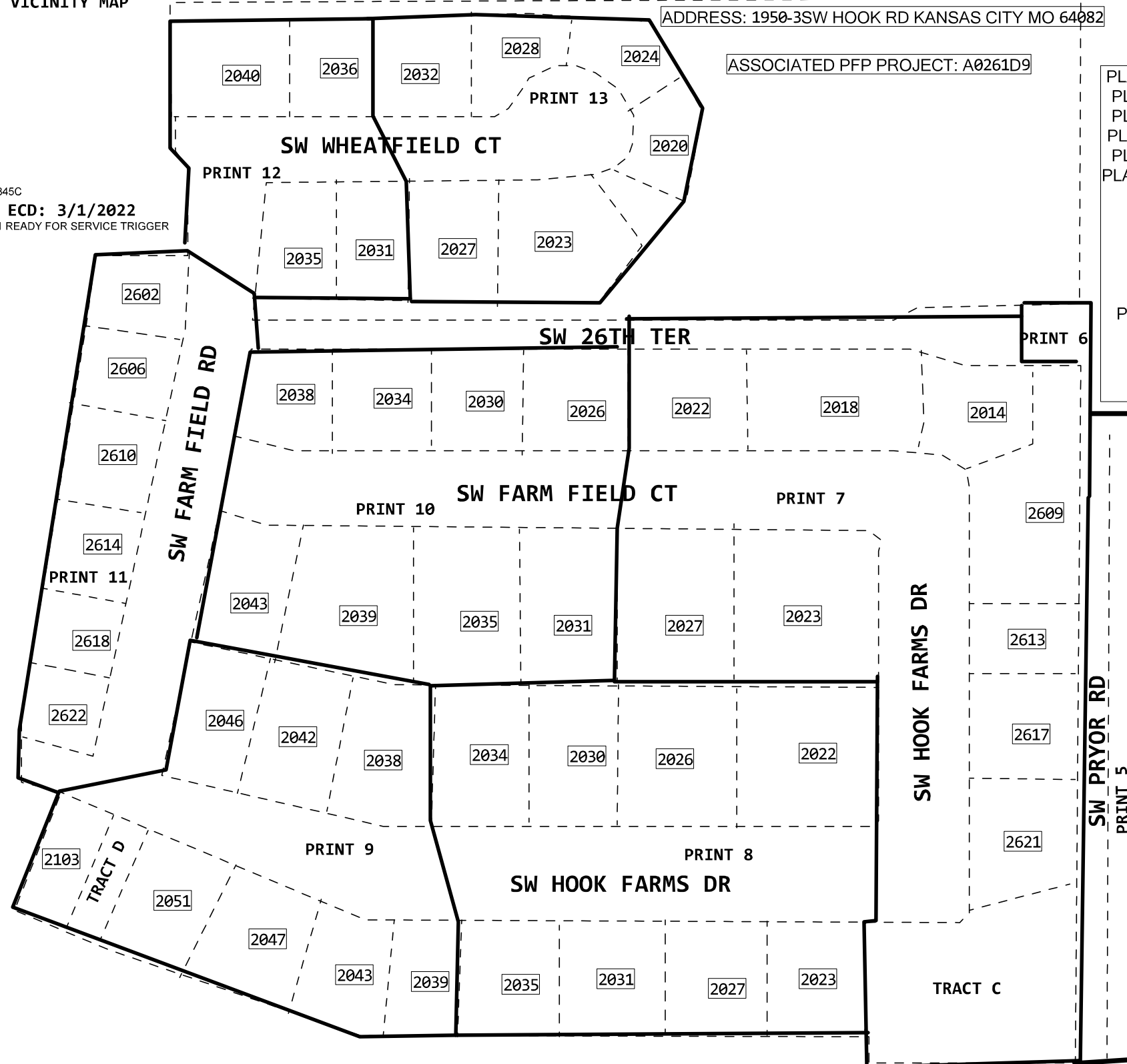
VICINITY MAP

ADDRESS: 1950-3SW HOOK RD KANSAS CITY MO 64082

HOOK FARMS - JOB 7158

ASSOCIATED PFP PROJECT: A0261D9

845C
ECD: 3/1/2022
1 READY FOR SERVICE TRIGGER



- PLACE 2853' OF 5BQ2MR-288 BURIED FIBER (845C)
- PLACE 311' OF 5BQ2MT-144 BURIED FIBER (845C)
- PLACE 504' OF 5BQ2MT-048 BURIED FIBER (845C)
- PLACE 1393' OF 5BQ2MT-024 BURIED FIBER (845C)
- PLACE 514' OF 5BQ2MT-012 BURIED FIBER (845C)
- PLACE 1314' OF 5BQ1M6-006 BURIED FIBER (845C)
- PLACE 16 GROUND RODS (845C)
- PLACE 5 HH-30 X48 X 36 (845C)
- PLACE 7 PED (845C)
- PLACE 17 DROP PRD 9"X12" (8645C)
- PLACE 11 BFGNNL-6 BURIED TERMINALS (845C)
- PLACE 1831' OF INNERDUCT1-1.5" (8645C)
- PLACE 2697' OF INNERDUCT1-2" (845C)
- PLACE 2757' OF INNERDUCT1-3" (845C)
- PLACE 2465' OF INNERDUCT1-4" (845C)

TERMINALS
845C
BFGNNL6
11 EXEMPT MATERIAL ONLY
11 SVA ONLY - PLACE PEDESTAL

HH PROTECTION
845C
5 SVA ONLY - HAND WORK 1 PE

DROP PED
8645C
HH-9X12
17 EXEMPT MATERIAL ONLY
17 SVA ONLY - PLACE BURIED S

AGGREGATE 1-2" INNERDUCT 845C
TOTAL LENGTH= 2697'
845C
INNERDUCT1-2"
2013 EXEMPT MATERIAL ONLY
2013 SVA ONLY - BORE ? INCLUDE
845C
INNERDUCT1-2"
684 EXEMPT MATERIAL ONLY
684 SVA ONLY - ADDER: PULLBAC

AGGREGATE 1-1.5" DROP INNERDUCT 8645C
TOTAL LENGTH=1831'
8645C
INNERDUCT1-1.5
1081 EXEMPT MATERIAL ONLY
1081 SVA ONLY - BORE - INCL PU
8645C
INNERDUCT1-1.5
750 EXEMPT MATERIAL ONLY
750 SVA ONLY - ADDER: PULLBAC

AGGREGATE 1-3" INNERDUCT 845C
TOTAL LENGTH=2757'
845C
INNERDUCT1-3
2864 EXEMPT MATERIAL ONLY
2864 SVA ONLY - BORE ? INCLUDE

AGGREGATE 1-4" INNERDUCT 845C
TOTAL LENGTH=2465'
845C
INNERDUCT1-4
2465 EXEMPT MATERIAL ONLY
2465 SVA ONLY - BORE ? INCLUDE

XGS-PON Optics (Choose Class N1 or Class N2 from drop-down list)	Class N1
Feeder Fiber Length (kft) from CO or Remote OLT	4.6
Avg. Feeder Splicing Interval (kft) - This is not the number of splices	0.9
OptiTip Connectors in lieu of splices (Choose 0-2 from drop-down list)	2
FiberWise - Add SFCM7 (Choose Yes or No from drop-down list)	No
FiberWise - Add SFCM6 (Choose Yes or No from drop-down list)	No
Distribution Length (kft) - PFP to FST	4.5
Total Length	9.1
Splitter Type	1x64
Max. Feeder + Splitter EML - Engineered Measured Loss (dBm) for 1310 nm downstream from distribution side of PFP splitter to OSP fiber panel at OLT location (Location "Q" to "H" on Optical Budget Diagram)	22.5
Max. Feeder + Splitter EML - Engineered Measured Loss (dBm) for 1550 nm upstream from OSP fiber panel at OLT location to distribution side of PFP splitter (Location "H" to "Q" on Optical Budget Diagram)	22.4
Distribution F2 EML - PFP to FST for 1310nm	3.0
Distribution F2 EML - PFP to FST for 1550nm*	3.0
Total EML OLT to FST for 1310nm	25.5
Total EML OLT to FST for 1550nm*	25.4

WC: BELTON
NPANNX:816524
CLLI:KSCYMO41

PLEASE CONTACT BRICE DISNEY AT 805-712-1073 OR BRICE.DISNEY@PEARCE-SERVICES.COM FOR ANY QUESTIONS OR ISSUE REGARDING THIS PROJECT

BEFORE YOU DIG
2 DAYS PRIOR
CALL 811

PERMIT REQ. BY BELTON, KS
ALL U/E & R/W TO BE SURVEYED & STAKED PRIOR TO ANY PLACEMENT
BURY/BORE ALL FIBER CABLES AND INNERDUCT AT 36" MIN DEPTH UNLESS OTHERWISE NOTED

PROJECT # A025771	DATE SVC REQ'D 05/01/2022	
NPANNX 816524	GEO LOC EE4160	CLLI KSCYMO41
PRIMARY ENGR.: JARMAN, SHANE R		
ENGR. ID: SJ3085	PERMIT REQ'D.	N
PHONE #: 8169449428	PRINT 1 OF 13	

1 (PPA) 845C 2853'
5BQ2MR-288
PON1950H,1-84 NC
(PON1950H,85-156) <A025785> A,85-156
PON1950H,157-288 NC

2 (PPA) 845C 311'
5BQ2MT-144
PON1950H,1-80
B,81-144

3 (PPA) 845C 744'
5BQ2MT-024
PON1950H,1-24

4 (PPA) 845C 59'
5BQ2MT-024
PON1950H,73-80
A,81-96

5 (PPA) 845C 4504'
5BQ2MT-048
PON1950H,25-66
C,43-48

6 (PPA) 845C 159'
5BQ1M6-006
PON1950H,67-72

11 (PPA) 845C 215'
5BQ1M6-006
PON1950H,61-66

12 (PPA) 845C 59'
5BQ1M6-006
PON1950H,55-60

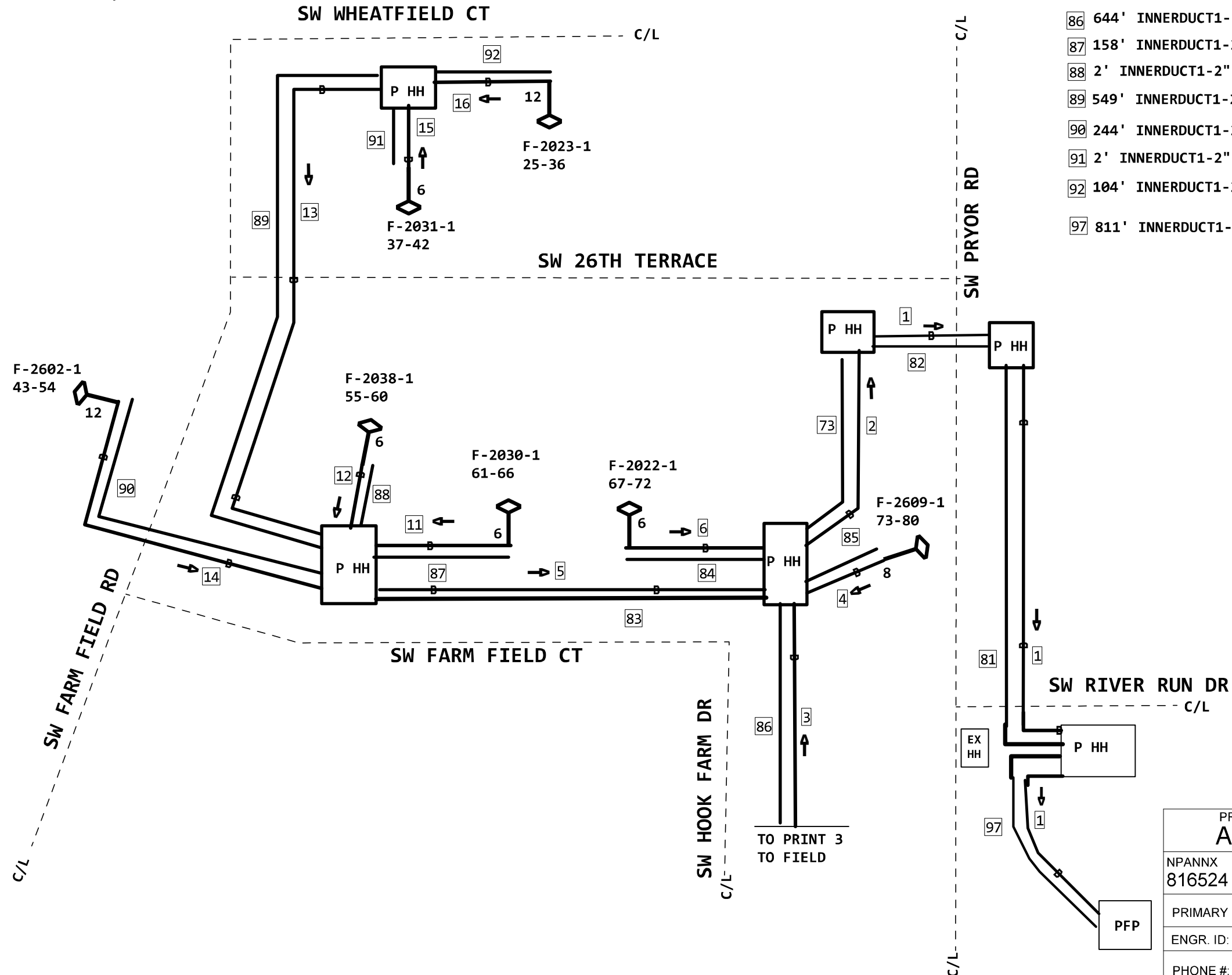
13 (PPA) 845C 649'
5BQ2MT-024
PON1950H,25-42
A,43-48

14 (PPA) 845C 301'
5BQ2MT-012
PON1950H,43-54

15 (PPA) 845C 59'
5BQ1M6-006
PON1950H,37-42

16 (PPA) 845C 161'
5BQ2MT-012
PON1950H,25-36

81 1654' INNERDUCT1-3"(PPA) 845C
82 188' INNERDUCT1-3"(PPA) 845C
73 211' INNERDUCT 1-3" (PPA) 845C
83 404' INNERDUCT1-2"(PPA) 845C
84 102' INNERDUCT1-2"(PPA) 845C
85 2' INNERDUCT1-2"(PPA) 845C
86 644' INNERDUCT1-2"(PPA) 845C
87 158' INNERDUCT1-2"(PPA) 845C
88 2' INNERDUCT1-2"(PPA) 845C
89 549' INNERDUCT1-2"(PPA) 845C
90 244' INNERDUCT1-2"(PPA) 845C
91 2' INNERDUCT1-2"(PPA) 845C
92 104' INNERDUCT1-2"(PPA) 845C
97 811' INNERDUCT1-3" (PPA) 845C



3 (PPA) 845C
5BQ2MT-024
PON1950H, 1-24

7 (PPA) 845C 209'
5BQ1M6-006
PON1950H, 19-24

8 (PPA) 845C 59'
5BQ1M6-006
PON1950H, 13-18

9 (PPA) 845C 205'
5BQ1M6-006
PON1950H, 7-12

10 (PPA) 845C 349'
5BQ1M6-006
PON1950H, 1-6

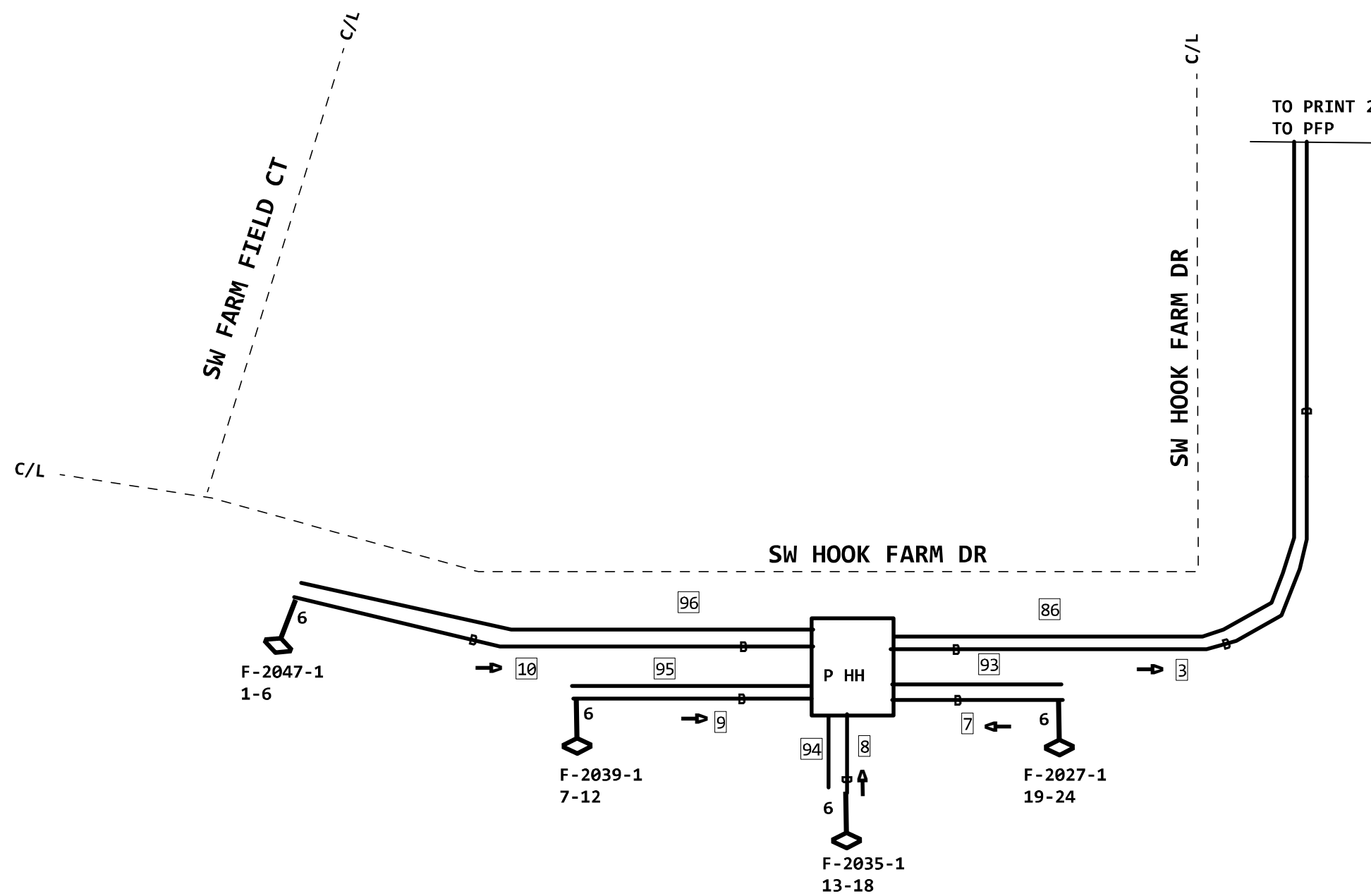
86 INNERDUCT1-2" (PPA) 845C

93 152' INNERDUCT1-2" (PPA) 845C

94 2' INNERDUCT1-2" (PPA) 845C

95 148' INNERDUCT1-2" (PPA) 845C

96 299' INNERDUCT1-2" (PPA) 845C



PROJECT # A025771		DATE SVC REQ'D 03/01/2022	
NPANNX 816524	GEO LOC EE4160	CLLI KSCYMO41	
PRIMARY ENGR.: JARMAN, SHANE R			
ENGR. ID: SJ3085		PERMIT REQ'D.	N
PHONE #: 8169449428		PRINT 3 OF 13	

- PLACED ON A0261D9
- 21 LESMMOVL
1950-3 SW HOOK RD
BABMS576-100ST (PPA) 845C
IN SPT3215ZC,1-128
OUT PON1950H,1-576
 - 22 1950-3 SW HOOK RD
FDF-072 (PPA) 845C
C,1-72
 - 23 LESMMOVL
1950- 3 SW HOOK RD
SPLSCAPC1X64LS (PPA) 845C
OLT1390HR,13-14
1X64 SPT3215ZC,1-128
 - 24 (PPA) 845C 100'
INV
C,1-72
 - 25 (PPA) 845C 100'
INV
OLT1390HR,13-14
D,3-48
 - 26 (PPA) 845C 100'
INV
OUT PON1950H,1-288
 - 27 (PPA) 845C 100'
INV
OUT PON1950H,289-576

- 11 E00587 LESNMOAH
1950 SW HOOK RD
7330FTTNALP248C (2008) 9257C
CABINET
Y L2009,253-256
Y C,5-24
Y 3215FN_I,1-400
3215FN_O,1-400

- 12 S 1950 HOOK RD
BxBNNL1200*710 (2005) 45C

- 151 (2008) 85C 1'
5BQ2MT24-100LP
L2009,253-256
C,5-24

- 152 (2008) 5C 40'
ANMW-900
3215FN_I,1-400
3215FN_O,1-400
A,801-900

- 153 (2005) 45C 358'
ANMW-25
1950HR,51-75

**BORE BELOW EXISTING
SAI AND HANDHOLE
AND PLACE 288F IN 3" DUCT
4" DUCT IS FOR FUTURE
ROAD MOVE PROJECT**

- 4 845C
5BQ2MR-288
3153 MATERIAL ONLY
3153 SVA ONLY - PLACE ITEM IN
- 1 (PPA) 845C 3153'
5BQ2MR-288
PON1950H,1-84 NC
(PON1950H,85-156) <A025785> A,85-156

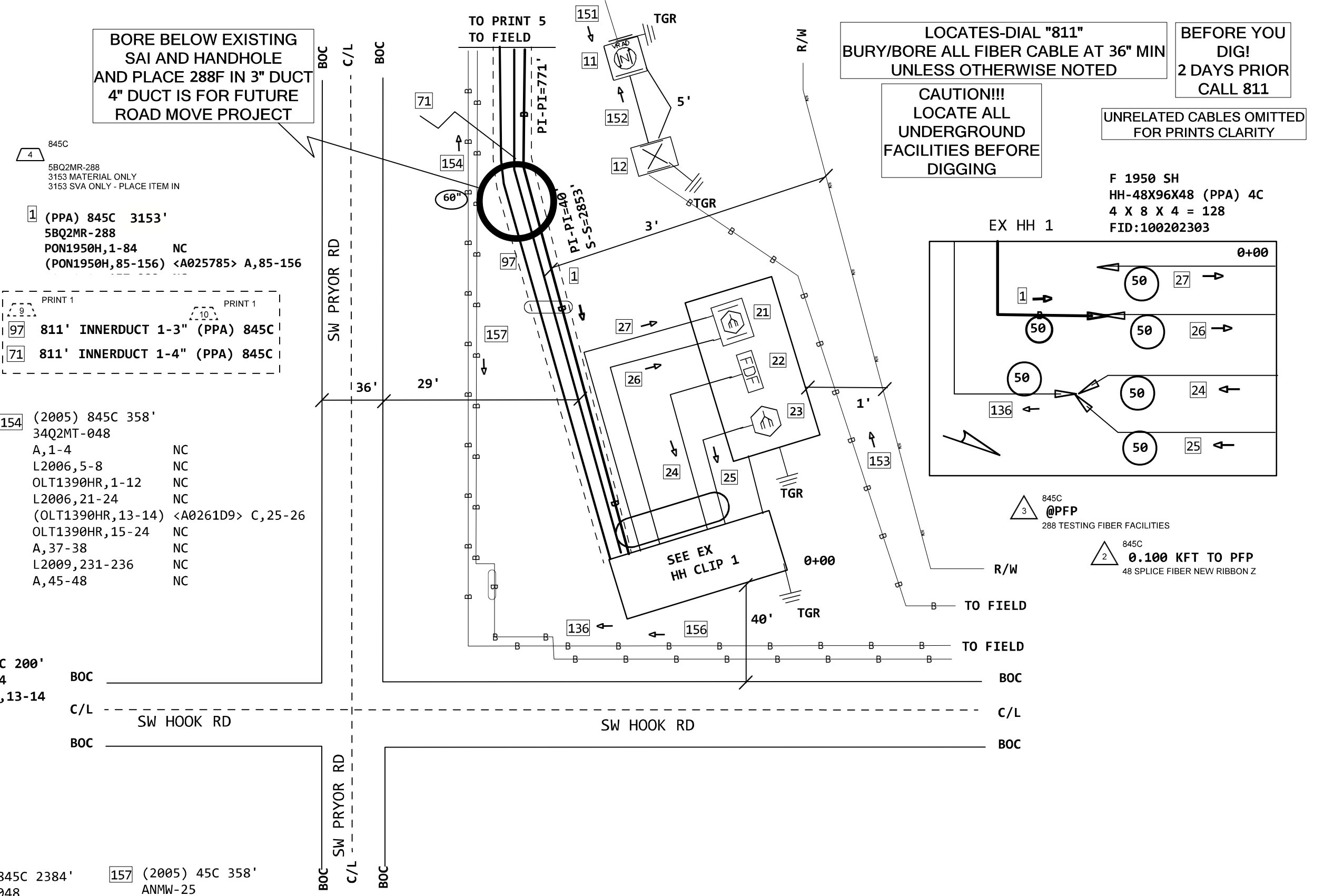
- PRINT 1
- 97 811' INNERDUCT 1-3" (PPA) 845C
 - 71 811' INNERDUCT 1-4" (PPA) 845C

- 154 (2005) 845C 358'
34Q2MT-048
A,1-4 NC
L2006,5-8 NC
OLT1390HR,1-12 NC
L2006,21-24 NC
(OLT1390HR,13-14) <A0261D9> C,25-26
OLT1390HR,15-24 NC
A,37-38 NC
L2009,231-236 NC
A,45-48 NC

- 136 (PPA) 845C 200'
5BQ2MT-024
OLT1390HR,13-14
B,3-24

- 156 (2020) 845C 2384'
5BQ2MT-048
A,1-4
L2006,5-8
A,9-20
L2006,21-24
A,25-38
L2009,231-236
A,45-48

- 157 (2005) 45C 358'
ANMW-25
1950HR,51-75



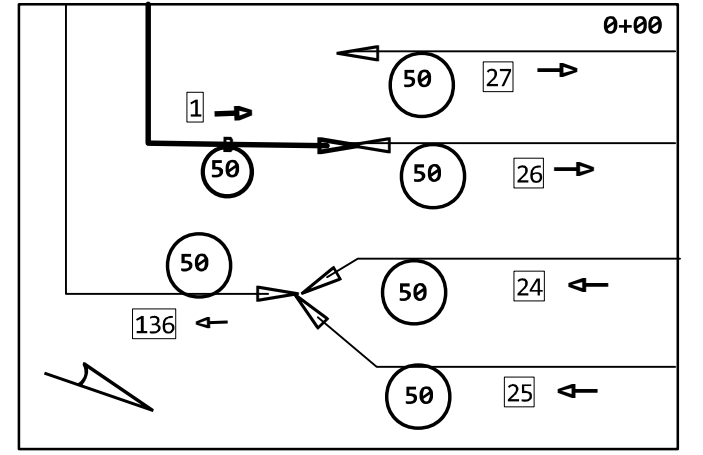
**LOCATES-DIAL "811"
BURY/BORE ALL FIBER CABLE AT 36" MIN
UNLESS OTHERWISE NOTED**

**BEFORE YOU
DIG!
2 DAYS PRIOR
CALL 811**

**CAUTION!!!
LOCATE ALL
UNDERGROUND
FACILITIES BEFORE
DIGGING**

UNRELATED CABLES OMITTED
FOR PRINTS CLARITY

F 1950 SH
HH-48X96X48 (PPA) 4C
4 X 8 X 4 = 128
FID:100202303



- 3 845C
@PFP
288 TESTING FIBER FACILITIES
- 2 845C
0.100 KFT TO PFP
48 SPLICE FIBER NEW RIBBON Z

PROJECT # A025771		DATE SVC REQ'D 05/01/2022	
NPANNX 816524	GEO LOC EE4160	CLLI KSCYMO41	
PRIMARY ENGR.: JARMAN, SHANE R			
ENGR. ID: SJ3085		PERMIT REQ'D.	Y
PHONE #: 8169449428		PRINT 4 OF 13	

PRINT 4
 1 (PPA) 845C
 5BQ2MR-288
 PON1950H,1-84 NC
 (PON1950H,85-156) <A025785> A,85-156
 PON1950H,157-288 NC

PRINT 1
 9
 10
 81 1654' INNERDUCT1-3" (PPA) 845C
 97 INNERDUCT1-3" (PPA) 845C
 71 INNERDUCT 1-4" (PPA) 845C
 72 1654' INNERDUCT 1-4" (PPA) 845C

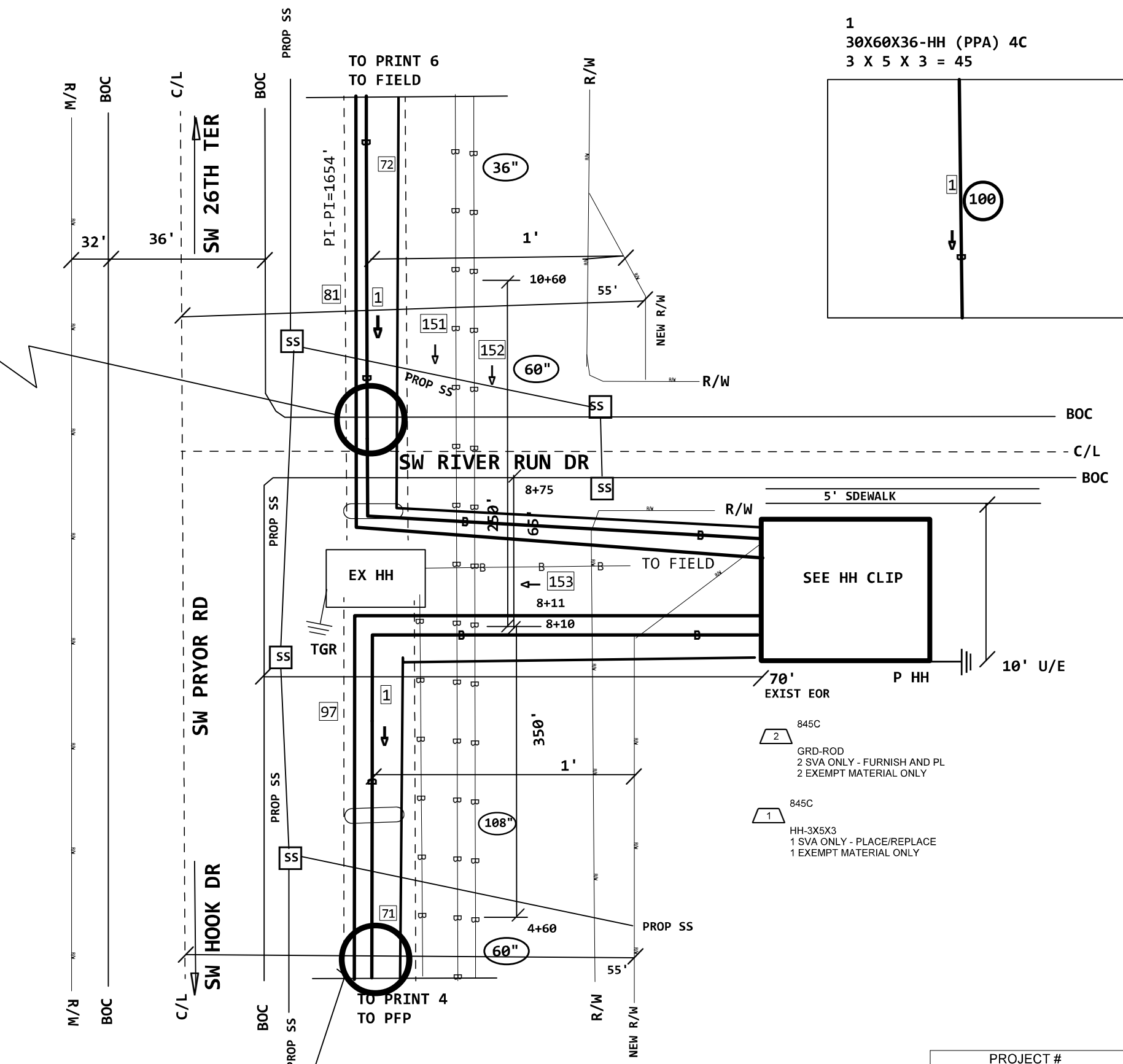
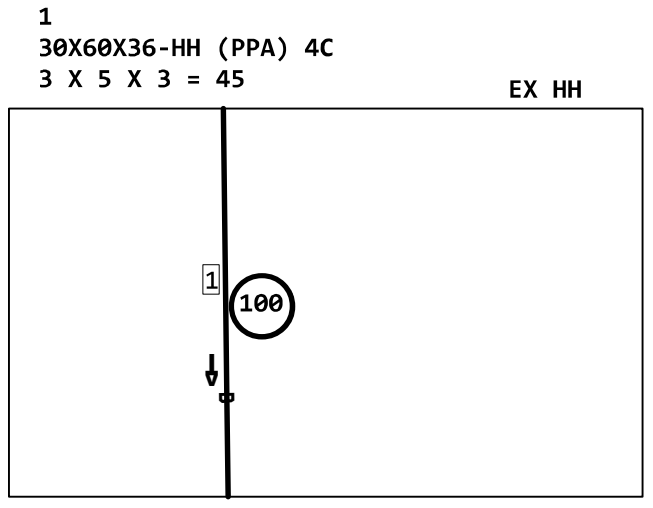
153 (2019) 845C 1400'
 5BQ2MT-024
 B,1-6
 OLT1390HR,19-24
 B,13-24

151 (2005) 845C 2529'
 34Q2MT-048
 A,1-4 NC
 L2006,5-8 NC
 OLT1390HR,1-12 NC
 L2006,21-24 NC
 (OLT1390HR,13-18) <A0261D9> F,13-18
 <A01N932> A,31-36 NC
 A,37-38 NC
 L2009,231-236 NC
 A,45-48 NC

152 (2005) 45C 981'
 ANMW-1500
 PG3213,201-300 NC
 (PG3213,501-600) <DC856528KS> DD,501-600
 PG3213,401-500 NC
 DPG3213,301-400 NC
 B,401-800 NC
 FH3213,11-20 NC
 B,811-825 NC
 FH3213,111-120 NC
 B,836-890 NC
 BR3213,11-15 NC
 B,896-900 NC
 PG3213,1-125 NC
 DPG3213,401-450 NC
 PG3213,176-200 NC
 A,1101-1500 NC

AT PROP SS CROSSING
 EGR = EL957
 PGR = EL962
 BASE OF SS = EL956
 PL CA = EL953
 APPROX 4' DEPTH

EGR = EL960
 PGR = EL960
 BASE OF SS = EL955
 PL CA = EL953
 APPROX 7' DEPTH



- 845C
2 GRD-ROD
2 SVA ONLY - FURNISH AND PL
2 EXEMPT MATERIAL ONLY
- 845C
1 HH-3X5X3
1 SVA ONLY - PLACE/REPLACE
1 EXEMPT MATERIAL ONLY

PROJECT # A025771		DATE SVC REQ'D 05/01/2022	
NPANNX 816524	GEO LOC EE4160	CLLI KSCYMO41	
PRIMARY ENGR.: JARMAN, SHANE R			
ENGR. ID: SJ3085		PERMIT REQ'D.	Y
PHONE #: 8169449428		PRINT 5 OF 13	

- PRINT 4
- 1 (PPA) 845C 2
 - 5BQ2MR-288
 - PON1950H,1-84 NC
 - (PON1950H,85-156) <A025785> A,85-156
 - PON1950H,157-288 NC

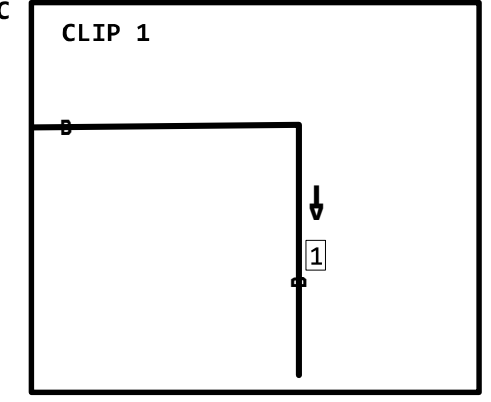
- 845C
- 1 5BQ2MT-144
 - 311 MATERIAL ONLY
 - 311 SVA ONLY - PLACE ITEM IN
 - 2 (PPA) 845C 311'
 - 5BQ2MT-144
 - PON1950H,1-80
 - B,81-144

- PRINT 1
- 71 211' INNERDUCT 1-3" (PPA) 845C
 - 81 INNERDUCT 1-3" (PPA) 845C
 - 82 188' INNERDUCT 1-3" (PPA) 845C
 - 72 INNERDUCT 1-4" (PPA) 845C

- 151 (2005) 845C 2529'
- 34Q2MT-048
- A,1-4 NC
- L2006,5-8 NC
- OLT1390HR,1-12 NC
- L2006,21-24 NC
- (OLT1390HR,13-18) <A0261D9> F,13-18
- <A01N932> A,31-36 NC
- A,37-38 NC
- L2009,231-236 NC
- A,45-48 NC

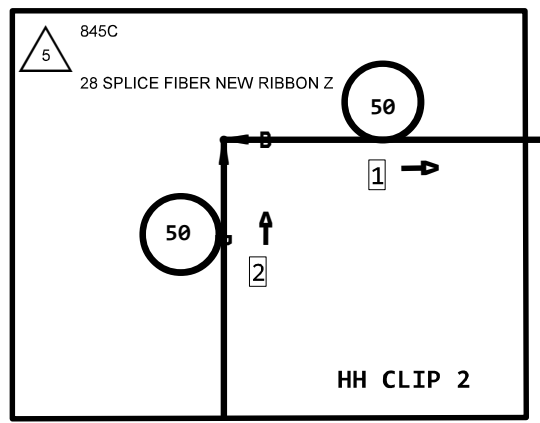
- 152 (2005) 45C 981'
- ANMW-1500
- PG3213,201-300 NC
- (PG3213,501-600) <DC856528KS> DD,501-600
- PG3213,401-500 NC
- DPG3213,301-400 NC
- B,401-800 NC
- FH3213,11-20 NC
- B,811-825 NC
- FH3213,111-120 NC
- B,836-890 NC
- BR3213,11-15 NC
- B,896-900 NC
- PG3213,1-125 NC
- DPG3213,401-450 NC
- PG3213,176-200 NC
- A,1101-1500 NC

HH-3X5X3 (PPA) 845C
3X5X3=45
FID:100382494



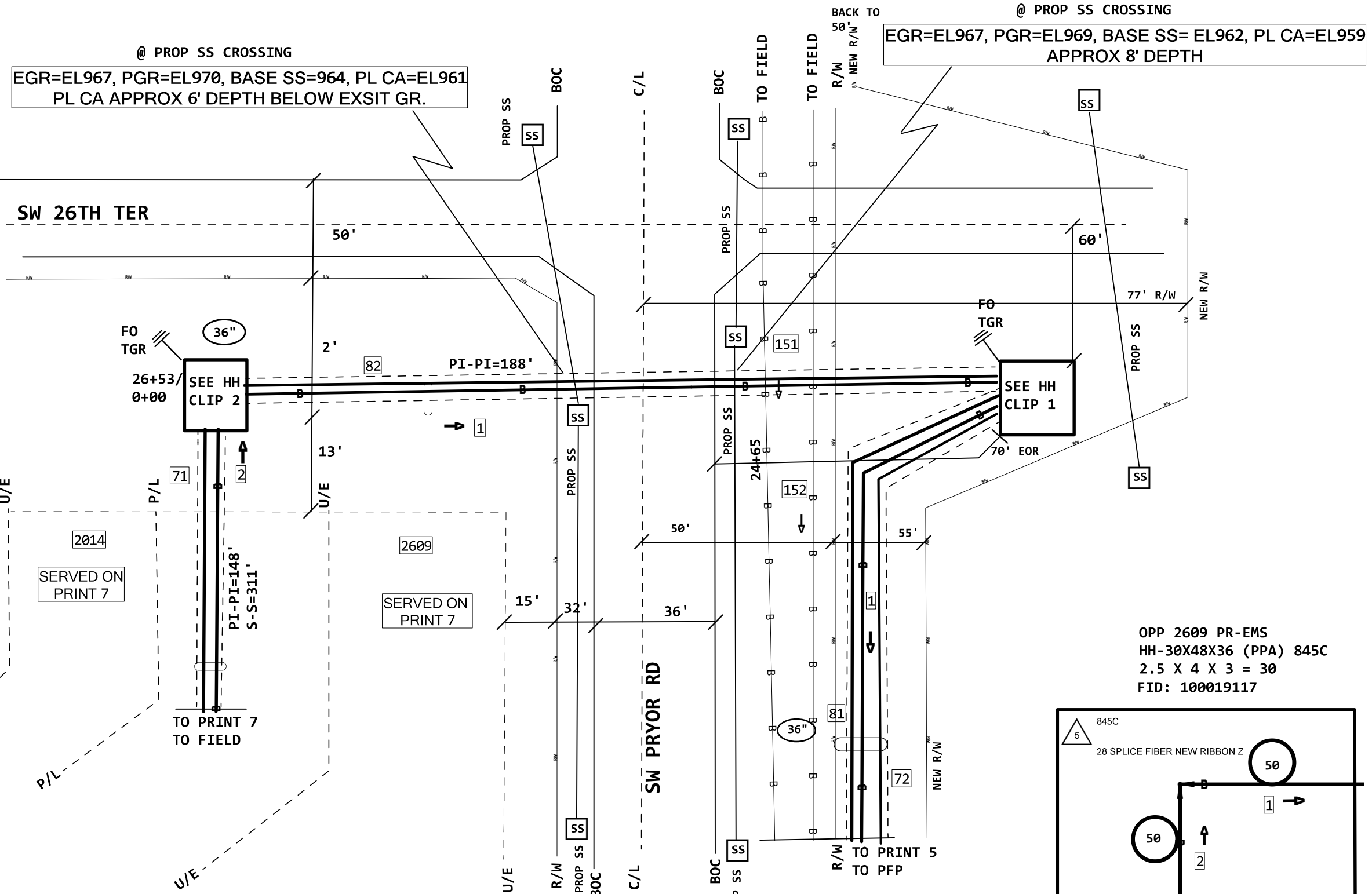
- 9 845C
- HH-3X5X3
- 1 EXEMPT MATERIAL ONLY
- 1 SVA ONLY - PLACE/REPLACE
- 7 845C
- GRD-ROD
- 2 EXEMPT MATERIAL ONLY
- 2 SVA ONLY - FURNISH AND PL
- 8 845C
- 2.715 KFT TO PFP
- CONT-PL-CABLE
- 10 EXEMPT MATERIAL ONLY
- 10 SVA ONLY - HAND DIG AND P

- 2 845C
- HH-30X48X36
- 1 EXEMPT MATERIAL ONLY
- 1 SVA ONLY - PLACE/REPLACE
- 3 845C
- GRD-ROD
- 2 EXEMPT MATERIAL ONLY
- 2 SVA ONLY - FURNISH AND PL
- 4 845C
- CONT-PL-CABLE
- 10 EXEMPT MATERIAL ONLY
- 10 SVA ONLY - HAND DIG AND P



2.953 KFT TO PFP

PROJECT #		DATE SVC REQ'D	
A025771		05/01/2022	
NPANNX	GEO LOC	CLLI	
816524	EE4160	KSCYMO41	
PRIMARY ENGR.: JARMAN, SHANE R			
ENGR. ID: SJ3085		PERMIT REQ'D.	Y
PHONE #: 8169449428		PRINT 6 OF 13	



PRINT 6
 (PPA) 845C
 5BQ2MT-144
 PON1950H,1-80
 B,81-144

PRINT 1
 3.316 KFT TO PFP
 F 2609-1 SW FARM FIELD C
 BFGNNL6 (PPA) 845C
 PON1950H,73-80

PRINT 1
 3.416 KFT TO PFP
 F 2022-1 SW FARM FIELD CT
 BFGNNL6 (PPA) 845C
 PON1950H,67-72

845C
 5BQ2MT-024
 744 MATERIAL ONLY
 744 SVA ONLY - PLACE ITEM IN
 (PPA) 845C 744'
 5BQ2MT-024
 PON1950H,1-24

845C
 1 SINGLE DISPATCH ONLY MISC
 845C
 1 SPLICE FIBER NEW STRANDED

845C
 GRD-ROD
 2 EXEMPT MATERIAL ONLY
 2 SVA ONLY - FURNISH AND PL
 845C
 CONT-PL-CABLE
 10 EXEMPT MATERIAL ONLY
 10 SVA ONLY - HAND DIG AND P

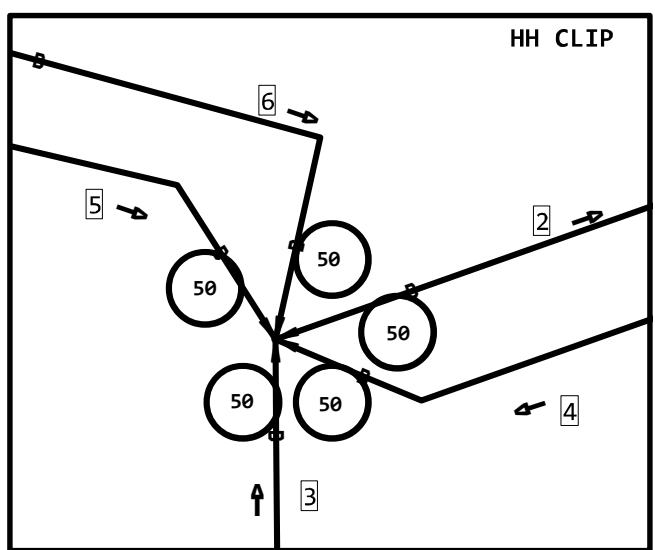
845C
 5BQ2MT-024
 59 MATERIAL ONLY
 59 SVA ONLY - PLACE ITEM IN
 (PPA) 845C 59'
 5BQ2MT-024
 PON1950H,73-80
 A,81-96

845C
 5BQ2MT-048
 504 MATERIAL ONLY
 504 SVA ONLY - PLACE ITEM IN
 (PPA) 845C 504'
 5BQ2MT-048
 PON1950H,25-66
 C,43-48

845C
 5BQ1M6-006
 159 MATERIAL ONLY
 159 SVA ONLY - PLACE ITEM IN
 (PPA) 845C 159'
 5BQ1M6-006
 PON1950H,67-72

F 2609 SW FF CT
 HH-30X48X36 (PPA) 845C
 2.5 X 4 X 3 = 30
 FID:100019165

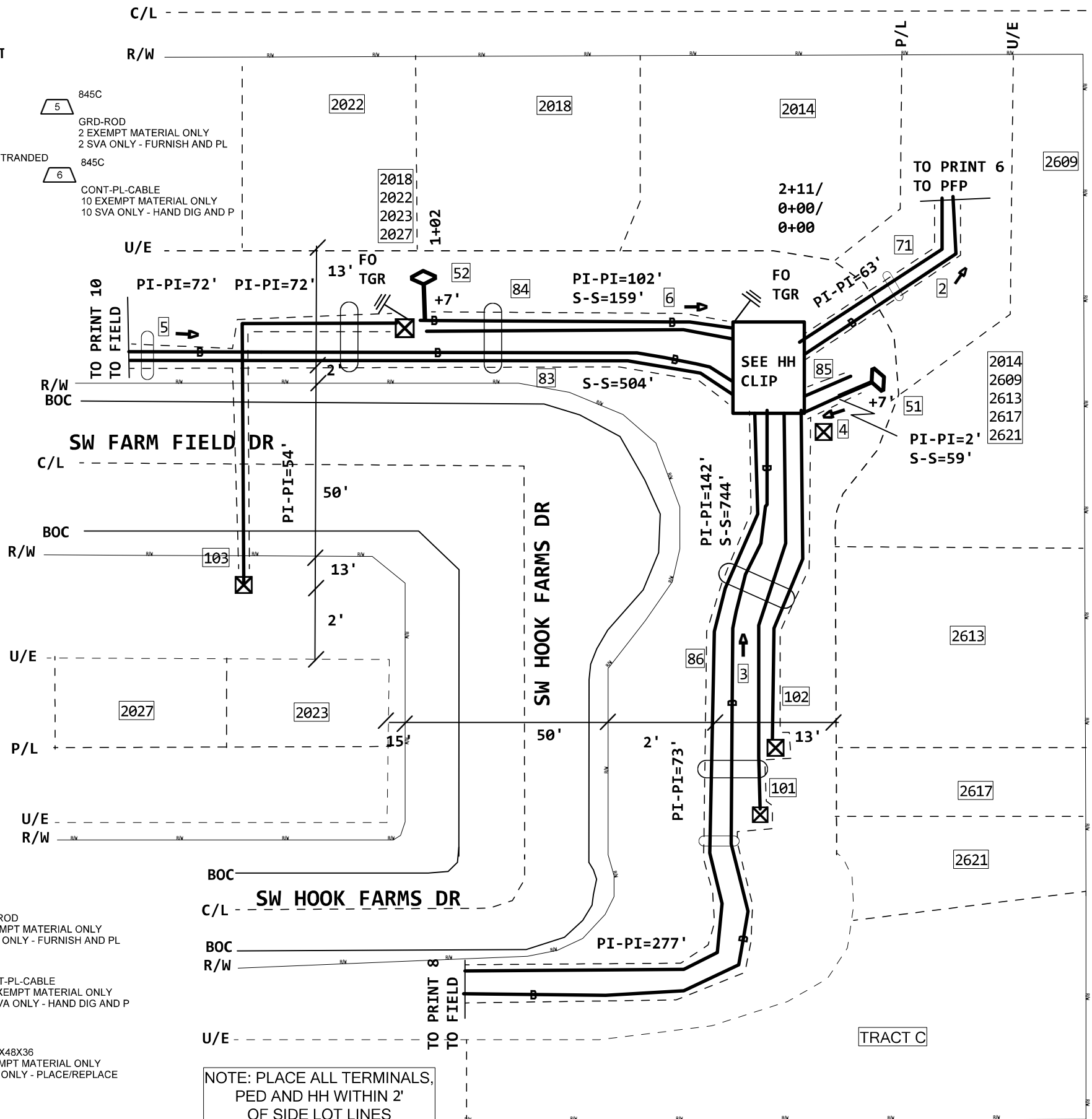
845C
 3.264 KFT TO PFP
 39 SPLICE FIBER NEW RIBBON Z



845C
 GRD-ROD
 2 EXEMPT MATERIAL ONLY
 2 SVA ONLY - FURNISH AND PL
 845C
 CONT-PL-CABLE
 10 EXEMPT MATERIAL ONLY
 10 SVA ONLY - HAND DIG AND P
 845C
 HH-30X48X36
 1 EXEMPT MATERIAL ONLY
 1 SVA ONLY - PLACE/REPLACE
 845C
 1 SINGLE DISPATCH ONLY MISC

NOTE: PLACE ALL TERMINALS,
 PED AND HH WITHIN 2'
 OF SIDE LOT LINES

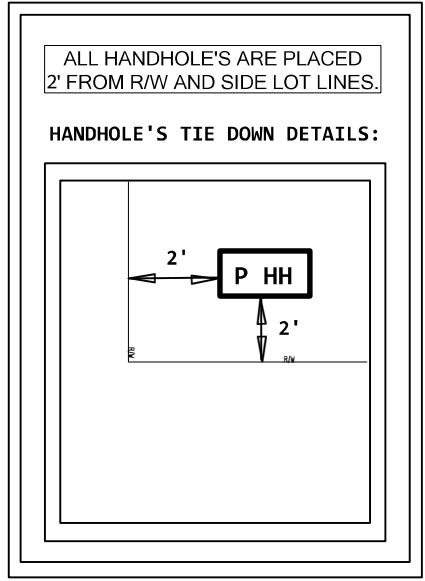
SW 26TH TER



- PRINT 1
 71 INNERDUCT1-3" (PPA) 845C
- PRINT 1 PRINT 1
 83 404' INNERDUCT1-2" (PPA) 845C
- 84 102' INNERDUCT1-2" (PPA) 845C
- 85 2' INNERDUCT1-2" (PPA) 845C
- 86 644' INNERDUCT1-2" (PPA) 845C

- PRINT 1 PRINT 1
 101 215' INNERDUCT1-1.5" (PPA) 8645C
- 102 142' INNERDUCT1-1.5" (PPA) 8645C
- 103 126' INNERDUCT1-1.5" (PPA) 8645C

SW PRYOR RD



PROJECT # A025771		DATE SVC REQ'D 05/01/2022	
NPANNX 816524	GEO LOC EE4160	CLLI KSCYMO41	
PRIMARY ENGR.: JARMAN, SHANE R			
ENGR. ID: SJ3085	PERMIT REQ'D.	Y	
PHONE #: 8169449428	PRINT 7 OF 13		

3 (PPA) 845C
5BQ2MT-024
PON1950H,1-24

1 845C
5BQ1M6-006
209 MATERIAL ONLY
209 SVA ONLY - PLACE ITEM IN

7 (PPA) 845C 209'
5BQ1M6-006
PON1950H,19-24

2 845C
5BQ1M6-006
59 MATERIAL ONLY
59 SVA ONLY - PLACE ITEM IN

8 (PPA) 845C 59'
5BQ1M6-006
PON1950H,13-18

3 845C
5BQ1M6-006
205 MATERIAL ONLY
205 SVA ONLY - PLACE ITEM IN

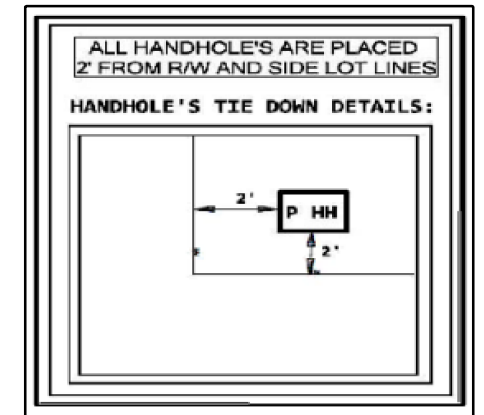
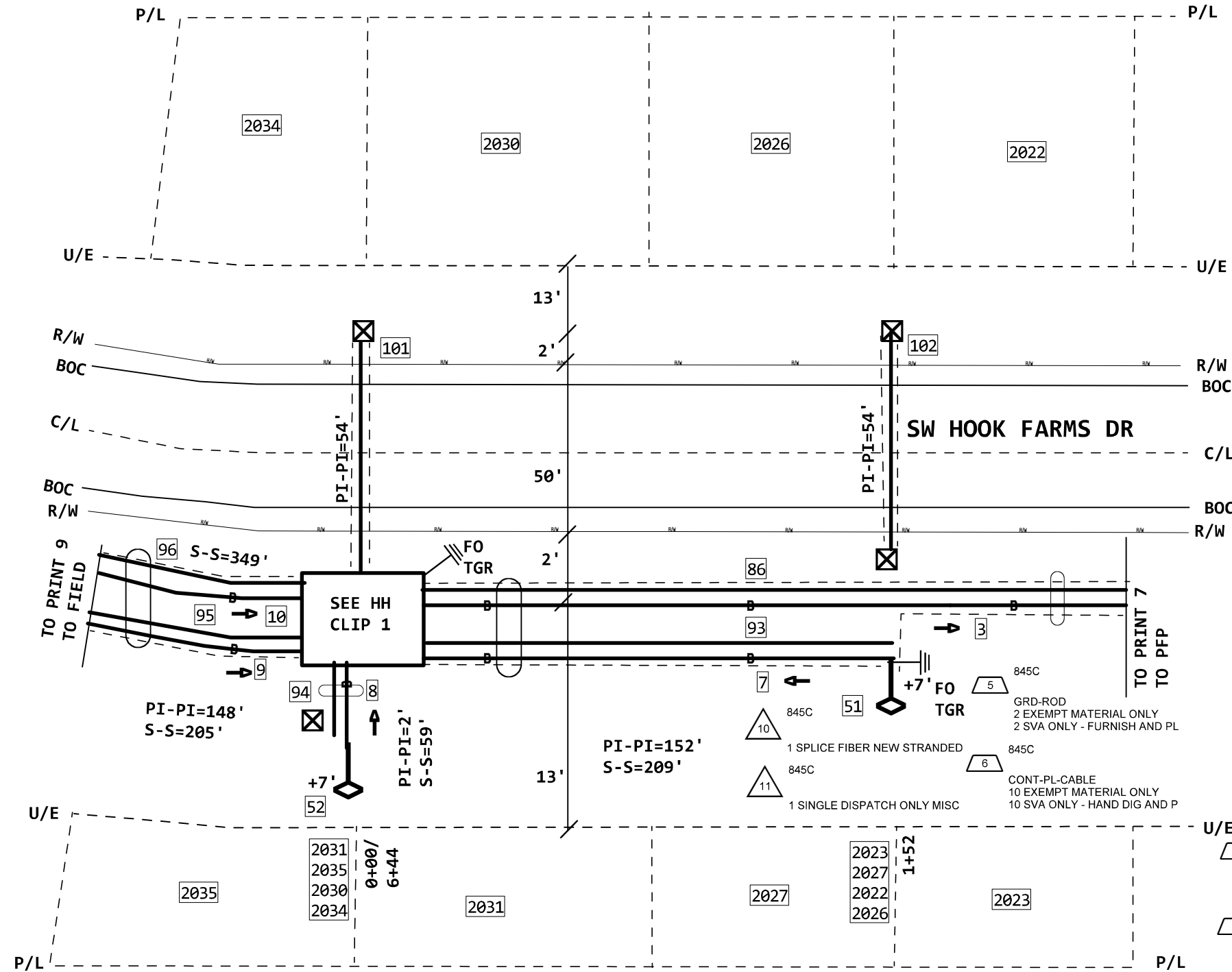
9 (PPA) 845C : 205'
5BQ1M6-006
PON1950H,7-12

4 845C
5BQ1M6-006
349 MATERIAL ONLY
349 SVA ONLY - PLACE ITEM IN

10 (PPA) 845C 349'
5BQ1M6-006
PON1950H,1-6

PRINT 1
4.210 KFT TO PFP
51 F 2027-1 SW HOOK FARM DR
BFGNNL6 (PPA) 845C
PON1950H,19-24

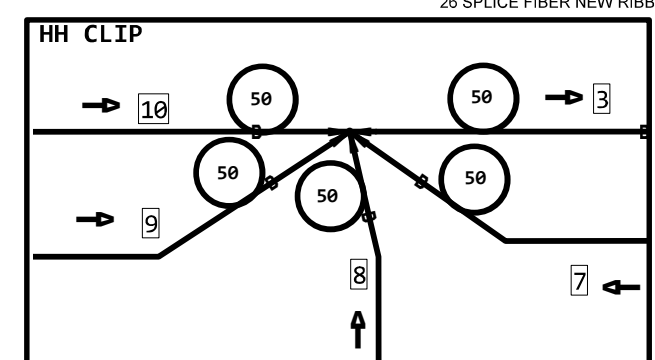
PRINT 1
4.060 KFT TO PFP
52 F 2035-1 SW HOOK FARM DR
BFGNNL6 (PPA) 845C
PON1950H,13-18



NOTE: PLACE ALL TERMINALS,
PED AND HH WITHIN 2'
OF SIDE LOT LINES

- 7 845C
GRD-ROD
2 EXEMPT MATERIAL ONLY
2 SVA ONLY - FURNISH AND PL
- 8 845C
CONT-PL-CABLE
10 EXEMPT MATERIAL ONLY
10 SVA ONLY - HAND DIG AND P
- 9 845C
HH-30X48X36
1 EXEMPT MATERIAL ONLY
1 SVA ONLY - PLACE/REPLACE
- 12 845C
1 SINGLE DISPATCH ONLY MISC

F 2035 SW HF DR
HH-30X48X36 (PPA) 845C
2.5 X 4 X 3 = 30
FID:100019236
13 845C
4.008 KFT TO PFP
26 SPLICE FIBER NEW RIBBON Z



- 5 845C
INNERDUCT1-2" (PPA) 845C
- 6 845C
152' INNERDUCT1-2" (PPA) 845C
- 8 845C
2' INNERDUCT1-2" (PPA) 845C
- 9 845C
148' INNERDUCT1-2" (PPA) 845C
- 10 845C
292' INNERDUCT1-2" (PPA) 845C

- 11 845C
54' INNERDUCT1-1.5" (PPA) 8645C
- 12 845C
54' INNERDUCT1-1.5" (PPA) 8645C

PROJECT # A025771		DATE SVC REQ'D 05/01/2022	
NPANNX 816524	GEO LOC EE4160	CLLI KSCYMO41	
PRIMARY ENGR.: JARMAN, SHANE R			
ENGR. ID: SJ3085		PERMIT REQ'D.	Y
PHONE #: 8169449428		PRINT 8 OF 13	

PRINT 8
 9 (PPA) 845C :
 5BQ1M6-006
 PON1950H,7-12

PRINT 8
 10 (PPA) 845C
 5BQ1M6-006
 PON1950H,1-6

PRINT 1
 2 4.206 KFT TO PFP
 51 F 2039-1 SW HOOK FARMS DR
 BFGNNL6 (PPA) 845C
 PON1950H,7-12

PRINT 1
 2 4.350 KFT TO PFP
 52 F 2047-1 SW HOOK FARMS DR
 BFGNNL6 (PPA) 845C
 PON1950H,1-6

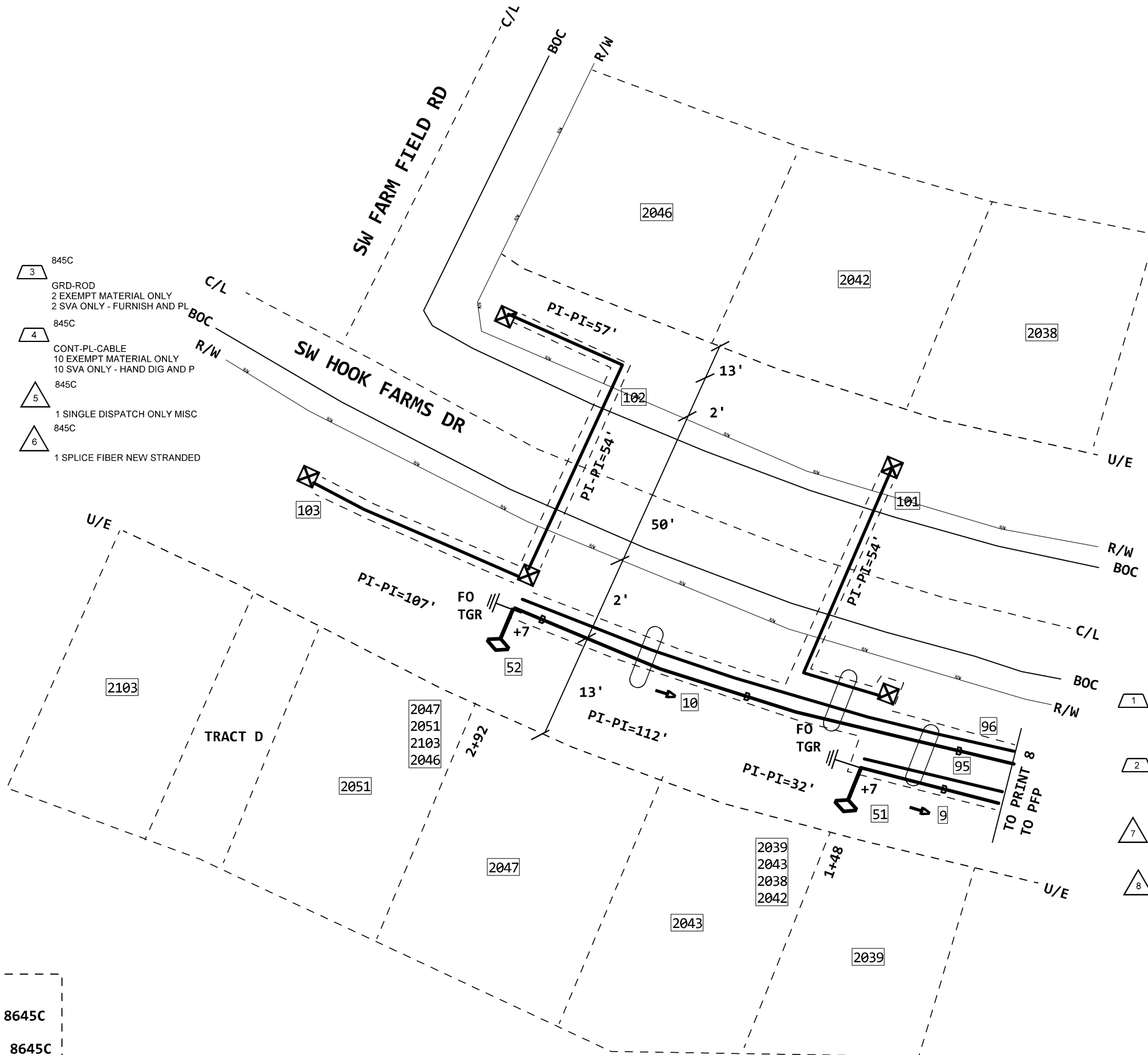
PRINT 1 PRINT 1
 95 INNERDUCT1-2" (PPA) 845C
 96 INNERDUCT1-2" (PPA) 845C

PRINT 1 PRINT 1
 101 86' INNERDUCT1-1.5" (PPA) 8645C
 102 111' INNERDUCT1-1.5" (PPA) 8645C
 103 107' INNERDUCT1-1.5" (PPA) 8645C

- 3 845C
GRD-ROD
2 EXEMPT MATERIAL ONLY
2 SVA ONLY - FURNISH AND PL
- 4 845C
CONT-PL-CABLE
10 EXEMPT MATERIAL ONLY
10 SVA ONLY - HAND DIG AND P
- 5 845C
1 SINGLE DISPATCH ONLY MISC
- 6 845C
1 SPLICE FIBER NEW STRANDED

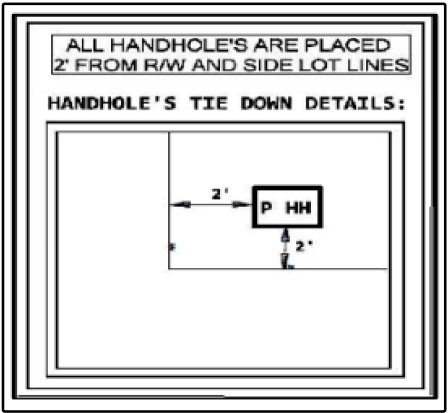
- 1 845C
GRD-ROD
2 EXEMPT MATERIAL ONLY
2 SVA ONLY - FURNISH AND PL
- 2 845C
CONT-PL-CABLE
10 EXEMPT MATERIAL ONLY
10 SVA ONLY - HAND DIG AND P
- 7 845C
1 SINGLE DISPATCH ONLY MISC
- 8 845C
1 SPLICE FIBER NEW STRANDED

NOTE: PLACE ALL TERMINALS,
 PED AND HH WITHIN 2'
 OF SIDE LOT LINES



PROJECT # A025771		DATE SVC REQ'D 05/01/2022
NPANNX 816524	GEO LOC EE4160	CLLI KSCYMO41
PRIMARY ENGR.: JARMAN, SHANE R		
ENGR. ID: SJ3085	PERMIT REQ'D.	Y
PHONE #: 8169449428	PRINT 9 OF 13	

- PRINT 10
- 3 (PPA) 845C
5BQ2MT-024
PON1950H, 25-42
A, 43-48
 - 1 845C
5BQ1M6-006
59 MATERIAL ONLY
59 SVA ONLY - PLACE ITEM IN
 - 15 (PPA) 845C 59'
5BQ1M6-006
PON1950H, 37-42

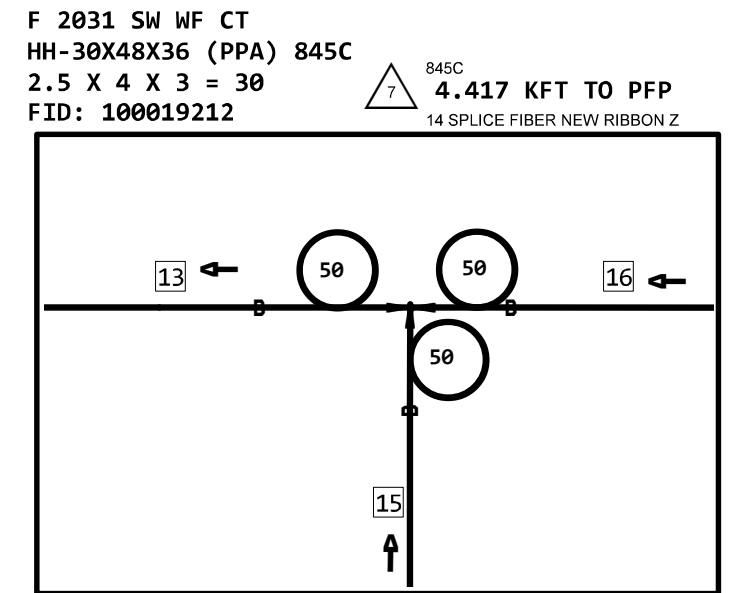
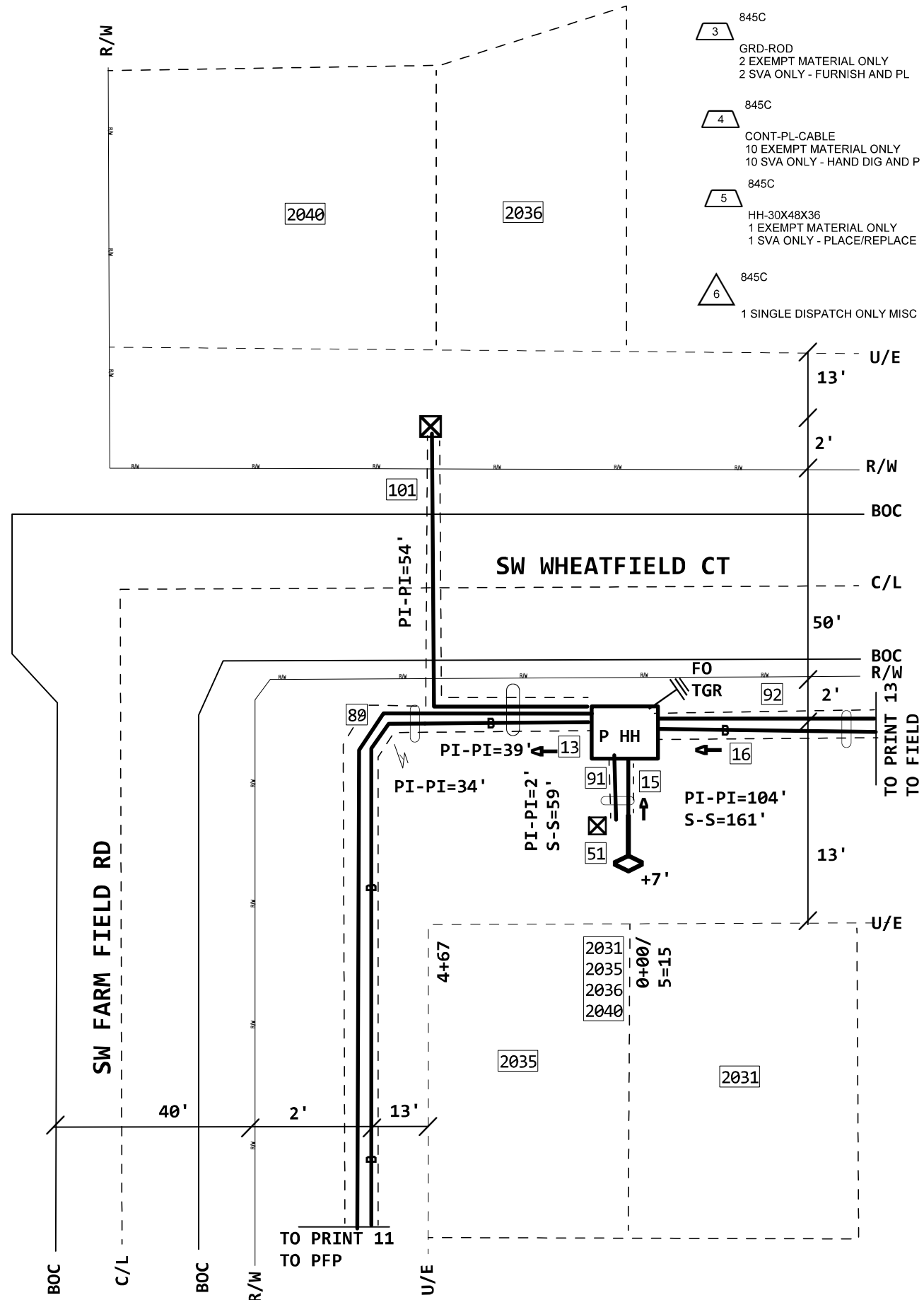


- 2 845C
5BQ2MT-012
161 MATERIAL ONLY
161 SVA ONLY - PLACE ITEM IN
- 16 (PPA) 845C 161'
5BQ2MT-012
PON1950H, 25-36

- PRINT 1
- 2 4.469 KFT TO PFP
 - 51 F 2031-1 SW WHEATFIELD CT
BFGNNL6 (PPA) 845C
PON1950H, 37-42

- PRINT 1
- 5 89 INNERDUCT1-2" (PPA) 845C
 - 91 2' INNERDUCT1-2" (PPA) 845C
 - 92 104' INNERDUCT1-2" (PPA) 845C

- PRINT 1
- 8 101 93' INNERDUCT1-1.5" (PPA) 8645C



NOTE: PLACE ALL TERMINALS, PED AND HH WITHIN 2' OF SIDE LOT LINES

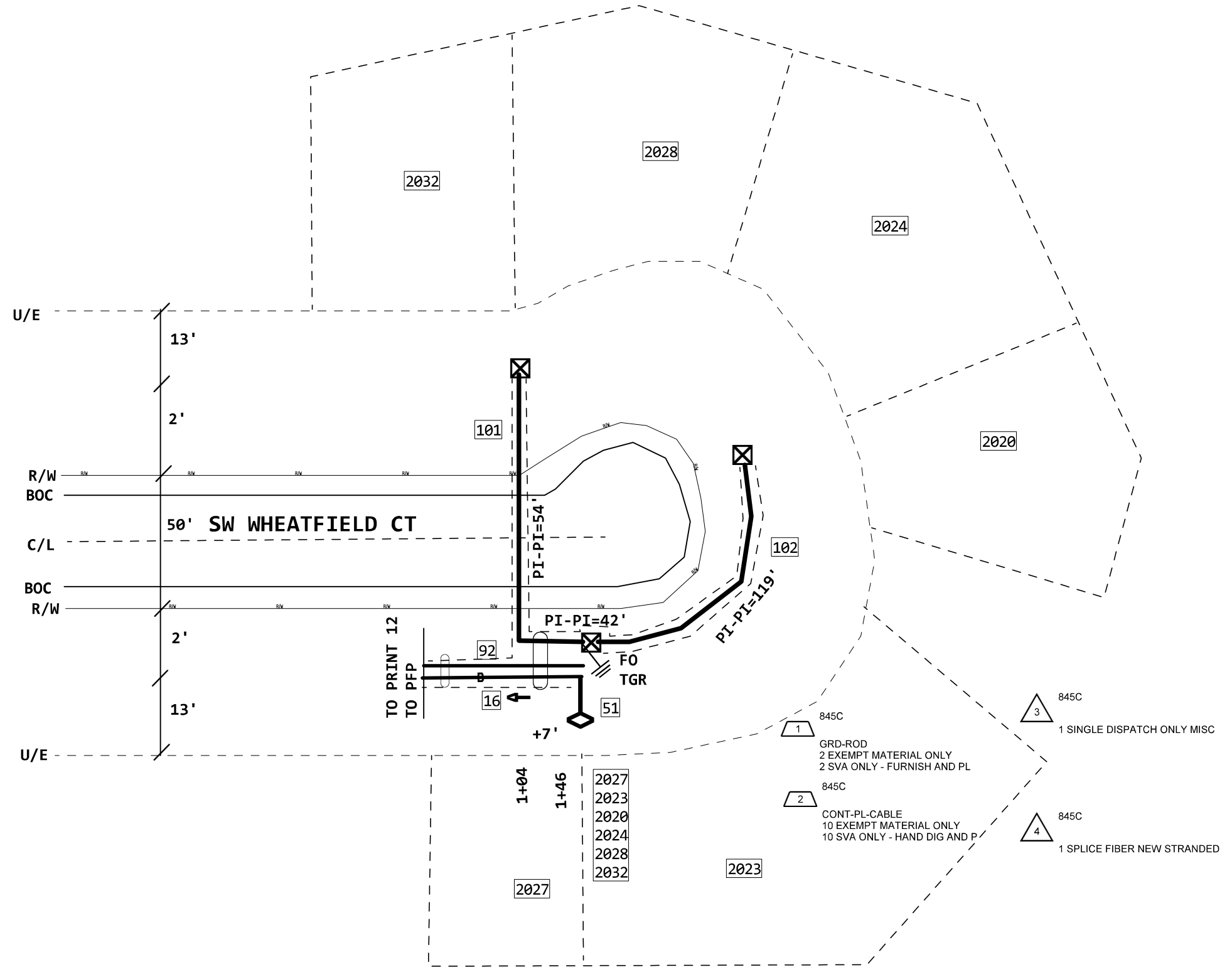
PROJECT # A025771		DATE SVC REQ'D 05/01/2022	
NPANNX 816524	GEO LOC EE4160	CLLI KSCYMO41	
PRIMARY ENGR.: JARMAN, SHANE R			
ENGR. ID: SJ3085		PERMIT REQ'D.	Y
PHONE #: 8169449428		PRINT 12 OF 13	

PRINT 13
 2 (PPA) 845C
 16 5BQ2MT-012
 PON1950H,25-36

PRINT 1
 2 4.571 KFT TO PFP
 51 F 2023-1 SW WHEATFIELD CT
 BFGNNL6 (PPA) 845C
 PON1950H,25-36

PRINT 1
 5 92 INNERDUCT1-2" (PPA) 845C

PRINT 1 PRINT 1
 7 101 96' INNERDUCT1-1.5" (PPA) 8645C
 8 102 119' INNERDUCT1-1.5" (PPA) 8645C



NOTE: PLACE ALL TERMINALS,
 PED AND HH WITHIN 2'
 OF SIDE LOT LINES

- 1 845C
 GRD-ROD
 2 EXEMPT MATERIAL ONLY
 2 SVA ONLY - FURNISH AND PL
- 2 845C
 CONT-PL-CABLE
 10 EXEMPT MATERIAL ONLY
 10 SVA ONLY - HAND DIG AND P
- 3 845C
 1 SINGLE DISPATCH ONLY MISC
- 4 845C
 1 SPLICE FIBER NEW STRANDED

PROJECT # A025771		DATE SVC REQ'D 05/01/2022	
NPANNX 816524	GEO LOC EE4160	CLLI KSCYMO41	
PRIMARY ENGR.: JARMAN, SHANE R			
ENGR. ID: SJ3085		PERMIT REQ'D.	Y
PHONE #: 8169449428		PRINT 13 OF 13	