

PELLA

BUILDING SYSTEMS

906 West 9th Street Pella, IA 50219
 (800) 225-0481 www.pellabuildings.com

BUILDING LOADS / DESCRIPTION:

WIDTH: 65 LENGTH: 70 HEIGHT: 16.0 / 16.0
 (BUILDING DIMENSIONS ARE NOMINAL. REFER TO PLANS).

THIS STRUCTURE IS DESIGNED UTILIZING THE LOADS INDICATED AND APPLIED AS REQUIRED BY : IBC 18

THE CONTRACTOR IS TO CONFIRM THAT THESE LOADS COMPLY WITH THE REQUIREMENTS OF THE LOCAL BUILDING DEPARTMENT.

ROOF DEAD LOAD: 2.000 PSF (ROOF PANELS & PURLINS)

COLLATERAL LOAD: 0.5 PSF

ROOF LIVE LOAD: 20.00 PSF

ROOF SNOW LOAD: 16.8 PSF

GROUND SNOW LOAD: 20.00 PSF

SNOW EXPOSURE: 1.0

THERMAL FACTOR: 1.2

BASIC WIND SPEED: 110 MPH

WIND EXPOSURE: C

INTERNAL PRESSURE COEFF.:

0.18 / 0.18

IMPORTANCE FACTORS:

WIND LOAD 1.0

SNOW LOAD 1.0

SEISMIC LOAD 1.0

SITE CLASS: D

SEISMIC ZONE: B

SEISMIC DESIGN CATEGORY: B

SPECTRAL RESPONSE COEFF.

S_{ds} 0.107

S_{d1} 0.109

MAPPED SPECTRAL RESPONSE ACC.

S_s 0.100

S₁ 0.068



ROOF PANELS:

COLOR: Galvalume

WALL PANELS:

COLOR: TBD

TRIM COLORS:

CABLE: TBD

CORNER: TBD

EAVE: TBD

FRAMED OPENINGS: TBD

LINER PANELS:

COLOR: Galvalume

LINER TRIM:

COLOR: Galvalume

DEFLECTION LIMITS:

EW COL:	180
EW RAF LIVE:	180
EW RAF WIND:	180
WALL GIRT:	90
PURL LIVE:	180
PURL WIND:	150
WALL PANEL:	60
ROOF PANEL LIVE:	60
ROOF PANEL WIND:	60
RF HORIZONTAL:	180
RF VERTICAL:	60
WIND BENT:	60

IMPORTANT NOTE: FINAL DETAILING, FABRICATION, AND DELIVERY DATE OF THIS PROJECT CANNOT BE COMPLETED UNTIL THE SIGNED APPROVALS ARE RETURNED TO THE METAL BUILDING MANUFACTURER.

△		
△		
△		
△		FOR CONSTRUCTION
△	1/21/22	FOR APPROVAL
REV.	DATE	REVISION

PURCHASER: Mega Storage
 PROJECT: Lee's Summit, MO
 JOB NUMBER: 2022-05

BUILDER / CONTRACTOR RESPONSIBILITIES

IT IS THE RESPONSIBILITY OF THE BUILDER/CONTRACTOR TO INSURE THAT ALL PROJECT PLANS AND SPECIFICATIONS COMPLY WITH THE APPLICABLE REQUIREMENTS OF THE GOVERNING BUILDING AUTHORITIES. THE SUPPLYING OF SEALED ENGINEERING DATA AND DRAWINGS FOR THE METAL BUILDING SYSTEM DOES NOT IMPLY OR CONSTITUTE AN AGREEMENT THAT THE METAL BUILDING SYSTEM MANUFACTURER OR ITS DESIGN ENGINEER IS ACTING AS THE ENGINEER OF RECORD OR DESIGN PROFESSIONAL FOR A CONSTRUCTION PROJECT.

THE CONTRACTOR MUST SECURE ALL REQUIRED APPROVALS AND PERMITS FROM THE APPROPRIATE AGENCY AS REQUIRED. APPROVAL OF THE METAL BUILDING SYSTEM MANUFACTURER'S DRAWINGS AND CALCULATIONS INDICATE THAT THE METAL BUILDING SYSTEM MANUFACTURER CORRECTLY INTERPRETED AND APPLIED THE REQUIREMENTS OF THE CONTRACT DRAWINGS AND SPECIFICATIONS. (SECT. 4.2.1 AISC CODE OF STANDARD PRACTICES, 9TH ED.) WHERE DISCREPANCIES EXIST BETWEEN THE METAL BUILDING SYSTEM MANUFACTURER'S STRUCTURAL STEEL PLANS AND THE PLANS FOR OTHER TRADES, THE STRUCTURAL STEEL PLANS SHALL GOVERN. (SECT. 3.3 AISC CODE OF STANDARD PRACTICE 9TH ED.)

DESIGN CONSIDERATIONS OF ANY MATERIALS IN THE STRUCTURE WHICH ARE NOT FURNISHED BY THE METAL BUILDING SYSTEM MANUFACTURER ARE THE RESPONSIBILITY OF THE CONTRACTORS AND ENGINEERS OTHER THAN THE METAL BUILDING SYSTEM MANUFACTURER'S ENGINEER UNLESS SPECIFICALLY INDICATED.

THE CONTRACTOR IS RESPONSIBLE FOR ALL ERECTION OF STEEL AND ASSOCIATED WORK IN COMPLIANCE WITH THE METAL BUILDING SYSTEM MANUFACTURER "FOR CONSTRUCTION" DRAWINGS.

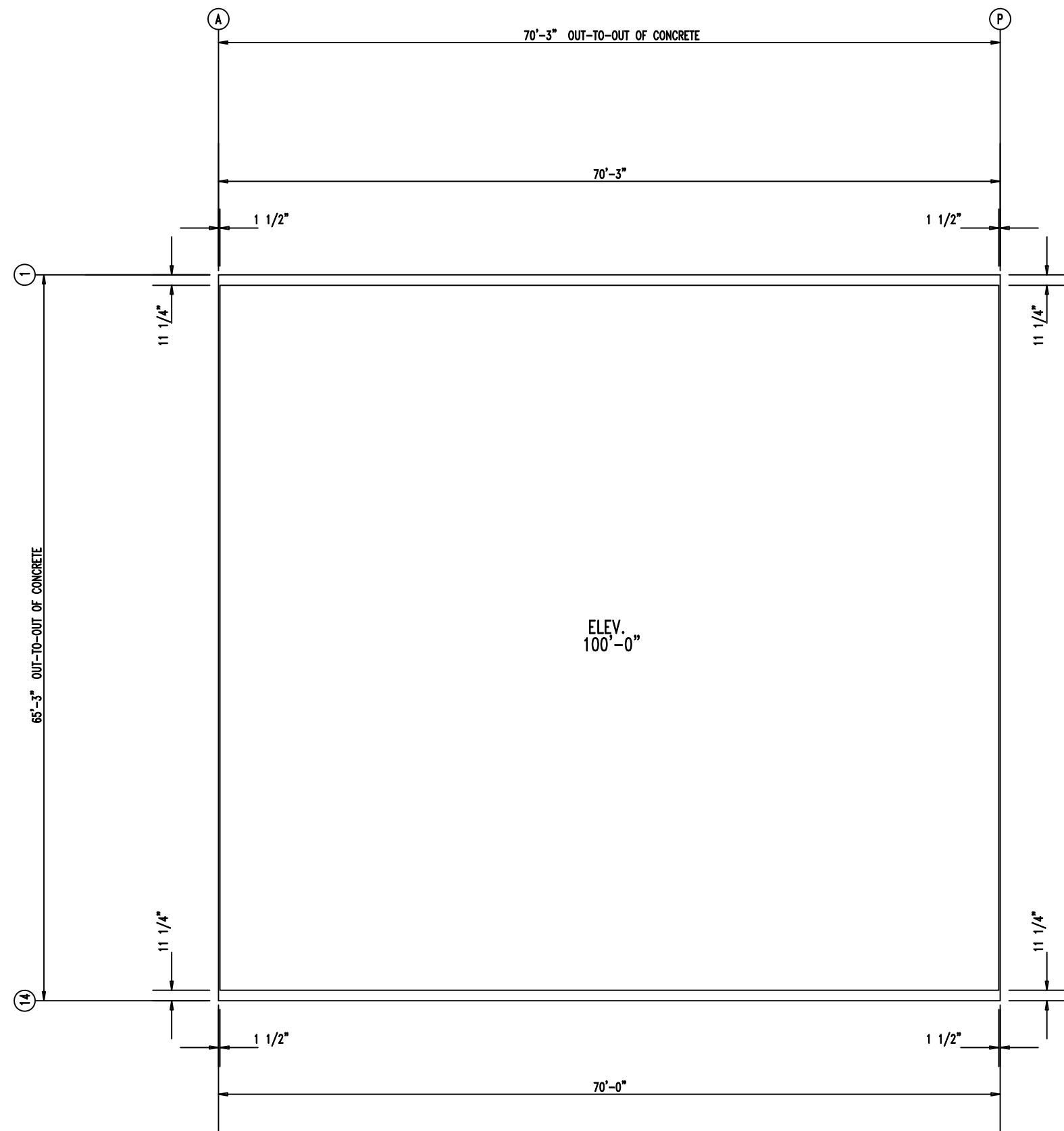
ALL BRACING AS SHOWN AND PROVIDED BY THE METAL BUILDING SYSTEM MANUFACTURER FOR THIS BUILDING IS REQUIRED AND SHALL BE INSTALLED BY THE ERECTOR AS A PERMANENT PART OF THE STRUCTURE.

TEMPORARY SUPPORTS, SUCH AS TEMPORARY GUYS, BRACES, FALSE WORK, CRIBBING OR OTHER ELEMENTS REQUIRED FOR THE ERECTION OPERATION WILL BE DETERMINED AND FURNISHED AND INSTALLED BY THE ERECTOR. THESE TEMPORARY SUPPORTS WILL SECURE THE STEEL FRAMING, OR ANY PARTLY ASSEMBLED STEEL FRAMING, AGAINST LOADS COMPARABLE IN INTENSITY TO THOSE FOR WHICH THE STRUCTURE WAS DESIGNED, RESULTING FROM WIND, SEISMIC FORCES AND ERECTION OPERATIONS, BUT NOT THE LOADS RESULTING FROM THE PERFORMANCE OF WORK BY OR THE ACTS OF OTHERS, NOR SUCH UNPREDICTABLE LOADS AS THOSE DUE TO TORNADO, EXPLOSION, OR COLLISION. (SECT. 7.9.1 AISC CODE OF STANDARD PRACTICE, 9TH ED.)

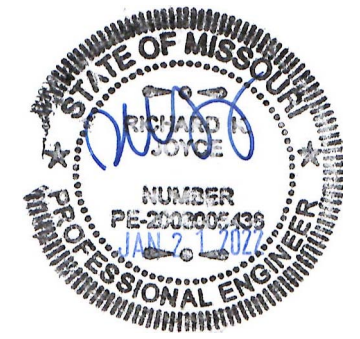
WARNING: IN NO CASE SHOULD GALVALUME STEEL PANELS BE USED IN CONJUNCTION WITH LEAD OR COPPER. BOTH LEAD AND COPPER HAVE HARMFUL CORROSION EFFECTS ON THE ALUMINUM ZINC ALLOY COATING WHEN THEY ARE USED IN CONTACT WITH GALVALUME STEEL PANELS. EVEN RUN-OFF FROM COPPER FLASHING, WIRING, OR TUBING ONTO GALVALUME SHOULD BE AVOIDED.


APPROVAL NOTES

THE FOLLOWING CONDITIONS APPLY IN THE EVENT THAT THESE DRAWINGS ARE USED AS APPROVAL DRAWINGS: IT IS IMPERATIVE THAT ANY CHANGES TO THESE DRAWINGS BE MADE IN CONTRASTING INK (PREFERABLY RED INK), HAVE ALL INSTANCES OF CHANGE CLEARLY INDICATED, AND BE LEGIBLE AND UNAMBIGUOUS. A SIGNATURE AND DATE IS REQUIRED ON ALL PAGES. MANUFACTURER RESERVES THE RIGHT TO RE-SUBMIT DRAWINGS WITH EXTENSIVE OR COMPLEX CHANGES REQUIRED TO AVOID MISFABRICATION. THIS MAY IMPACT THE DELIVERY SCHEDULE. APPROVAL OF THESE DRAWINGS INDICATES CONCLUSIVELY THAT THE METAL BUILDING SYSTEM MANUFACTURER HAS CORRECTLY INTERPRETED THE CONTRACT REQUIREMENTS, AND FURTHER CONSTITUTES AGREEMENT THAT THE BUILDING AS DRAWN WITH INDICATED CHANGES REPRESENTS THE TOTAL OF THE MATERIALS TO BE SUPPLIED BY MANUFACTURER. ANY CHANGES NOTED ON THE DRAWINGS NOT IN COMPLIANCE WITH THE TERMS AND REQUIREMENTS OF THE CONTRACT BETWEEN MANUFACTURER AND ITS CUSTOMER ARE NOT BINDING ON MANUFACTURER UNLESS SUBSEQUENTLY SPECIFICALLY ACKNOWLEDGED AND AGREED TO IN WRITING BY CHANGE ORDER OR SEPARATE DOCUMENTATION. MANUFACTURER RECOGNIZES THAT RUBBER STAMPS ARE ROUTINELY USED FOR INDICATING APPROVAL, DISAPPROVAL, REJECTION, OR MERE REVIEW OF THE DRAWINGS SUBMITTED. HOWEVER, MANUFACTURER DOES NOT ACCEPT CHANGES OR ADDITIONS TO CONTRACTUAL TERMS AND CONDITIONS THAT MAY APPEAR WITH USE OF A STAMP OR SIMILAR INDICATION OF APPROVAL, DISAPPROVAL, ETC. SUCH LANGUAGE APPLIED TO MANUFACTURER'S DRAWINGS BY THE CUSTOMER, ARCHITECT, ENGINEER, OR ANY OTHER PARTY WILL BE CONSIDERED AS UNACCEPTABLE ALTERNATIONS TO THESE DRAWING NOTES, AND WILL NOT ALTER THE CONTRACTUAL RIGHTS AND OBLIGATIONS EXISTING BETWEEN MANUFACTURER AND ITS CUSTOMER.

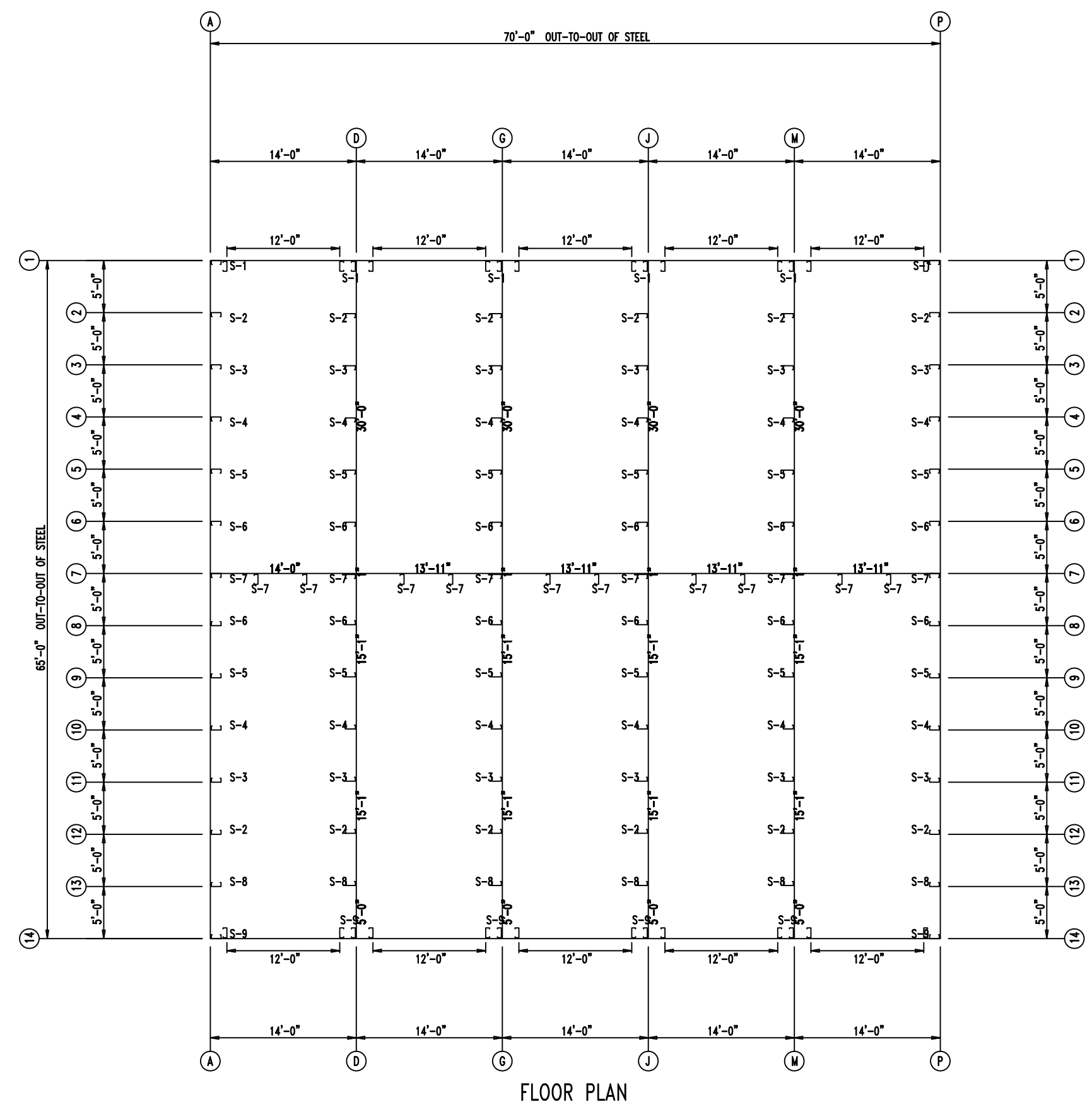


ANCHOR PLAN




 906 West 9th Street Pella, IA 50219 (800) 225-0481 www.pellabuildings.com		DESCRIPTION: ANCHOR PLAN		PROJECT: Bldg 9 and 10	
		CUSTOMER: Mega Storage		LOCATION: Lee's Summit, MO	
DRN. BY JB	CK'D BY DES	DATE 1/21/22	SCALE N.T.S.	REV. 00	QUOTATION NO. --
				SHEET NO. 2 OF 15	

MEMBER TABLE		
RELEASED FOR CONSTRUCTION		
As Noted on Plans Review		
MARK	PART	LENGTH
S-1	6X2C16	16'-2 1/2"
S-2	6X2C16	16'-3 1/2"
S-3	6X2C16	16'-16"
S-4	6X2C16	16'-18 1/2"
S-5	6X2C16	16'-11"
S-6	6X2C16	17'-1 1/2"
S-7	6X2C16	17'-4"
S-8	6X2C16	16'-1"
S-9	6X2C16	16'-0"



FLOOR PLAN

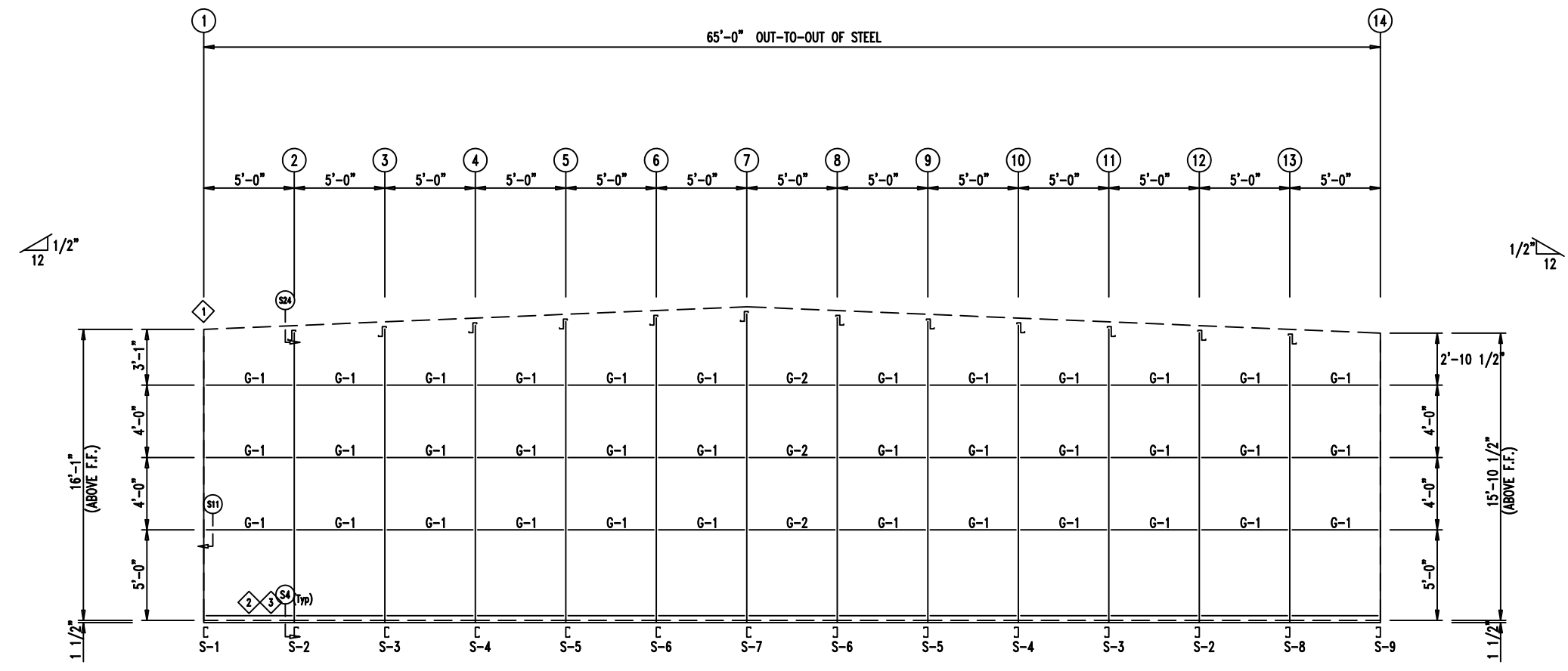


 <p>906 West 9th Street Pella, IA 50219 (800) 225-0481 www.pellabuildings.com</p>	DESCRIPTION: FLOOR PLAN		CUSTOMER: Mega Storage		PROJECT: Bldg 9 and 10	
	LOCATION: Lee's Summit, MO		DRN. BY: JB	CK'D BY: DES	DATE: 1/21/22	SCALE: N.T.S.
		QUOTATION NO. --	SHEET NO. 3 OF 15			

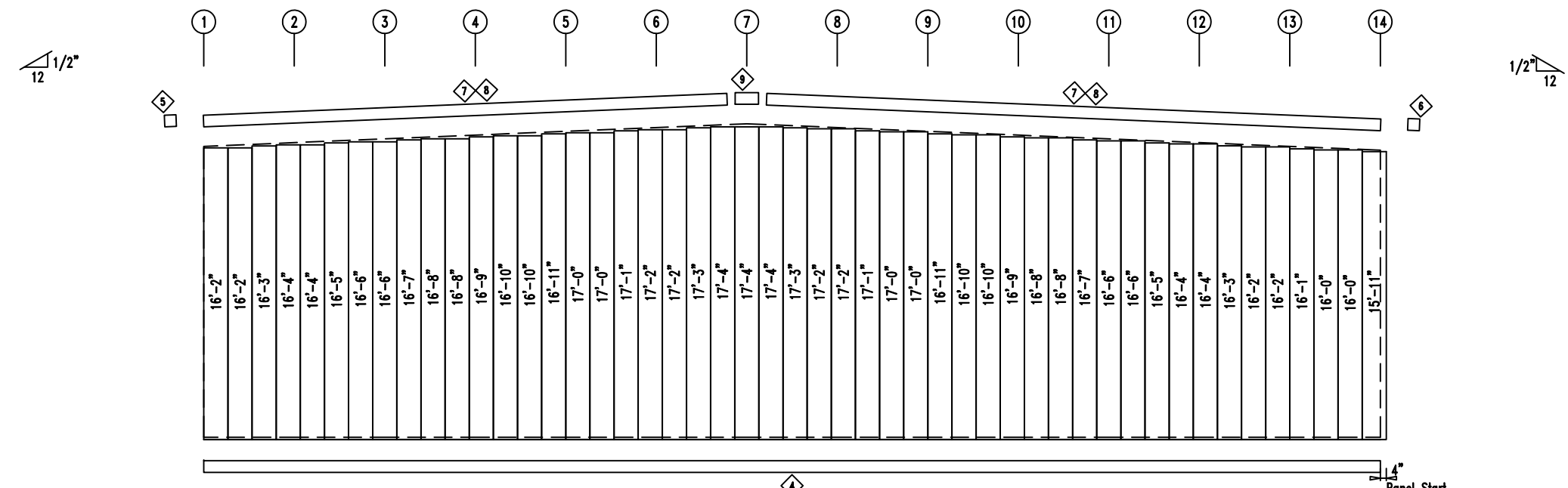
ID	PART	LENGTH	DETAIL
4	FL72	10'-2"	TRIM_74
5	FL16A	6"	
6	FL16A	6"	
7	FL16	10'-2"	TRIM_229
8	FL16D	20'-2"	TRIM_229
9	FL16B	1'-4"	

MARK	PART	LENGTH
S-1	6X2C16	16'-2 1/2"
S-2	6X2C16	16'-3 1/2"
S-3	6X2C16	16'-6"
S-4	6X2C16	16'-8 1/2"
S-5	6X2C16	16'-11"
S-6	6X2C16	17'-1 1/2"
S-7	6X2C16	17'-4"
S-8	6X2C16	16'-1"
S-9	6X2C16	16'-0"
G-1	4X20C16	4'-9 1/2"
G-2	4X20C16	4'-7 1/2"

ID	MARK	LENGTH
1	L3x3	20'-0"
2	BC-6	20'-0"
3	BC-6	SCRAP



ENDWALL FRAMING FRAME LINE: A



ENDWALL SHEETING & TRIM FRAME LINE: A

PANELS: 20 Ga. CP

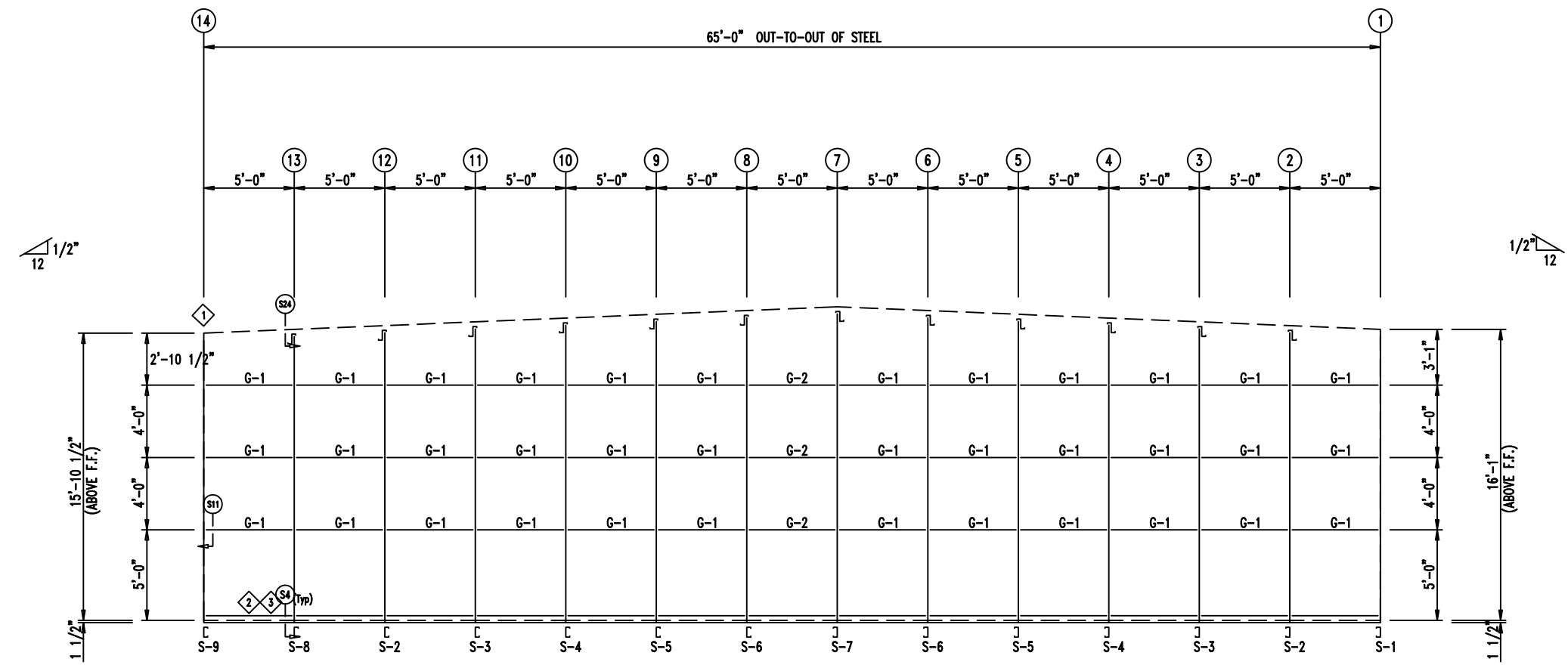


<p>906 West 9th Street Pella, IA 50219 (800) 225-0481 www.pellabuildings.com</p>	DESCRIPTION: ENDWALL DRAWING					
	CUSTOMER: Mega Storage	PROJECT: Bldg 9 and 10				
	LOCATION: Lee's Summit, MO					
DRN. BY: JB	CK'D BY: DES	DATE: 1/21/22	SCALE: N.T.S.	REV. 00	QUOTATION NO. --	SHEET NO. 4 OF 15

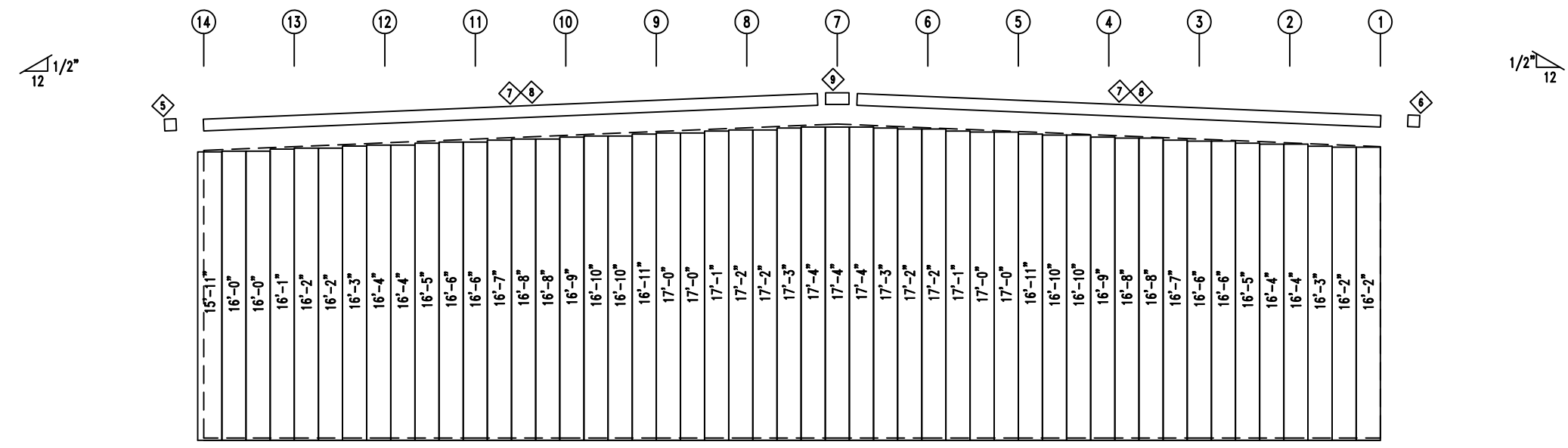
ID	PART	LENGTH	DETAIL
4	FL72	10'-2"	TRIM_74
5	FL16A	6"	
6	FL16A	6"	
7	FL16	10'-2"	TRIM_229
8	FL16D	20'-2"	TRIM_229
9	FL16B	1'-4"	TRIM_229

MARK	PART	LENGTH
S-1	6X2C16	16'-2 1/2"
S-2	6X2C16	16'-3 1/2"
S-3	6X2C16	16'-6"
S-4	6X2C16	16'-8 1/2"
S-5	6X2C16	16'-11"
S-6	6X2C16	17'-1 1/2"
S-7	6X2C16	17'-4"
S-8	6X2C16	16'-1"
S-9	6X2C16	16'-0"
G-1	4X20C16	4'-9 1/2"
G-2	4X20C16	4'-7 1/2"

ID	MARK	LENGTH
1	L3x3	20'-0"
2	BC-6	20'-0"
3	BC-6	SCRAP



ENDWALL FRAMING FRAME LINE: P



ENDWALL SHEETING & TRIM FRAME LINE: P

PANELS: 20 Ga. CP - NEED SIG 200



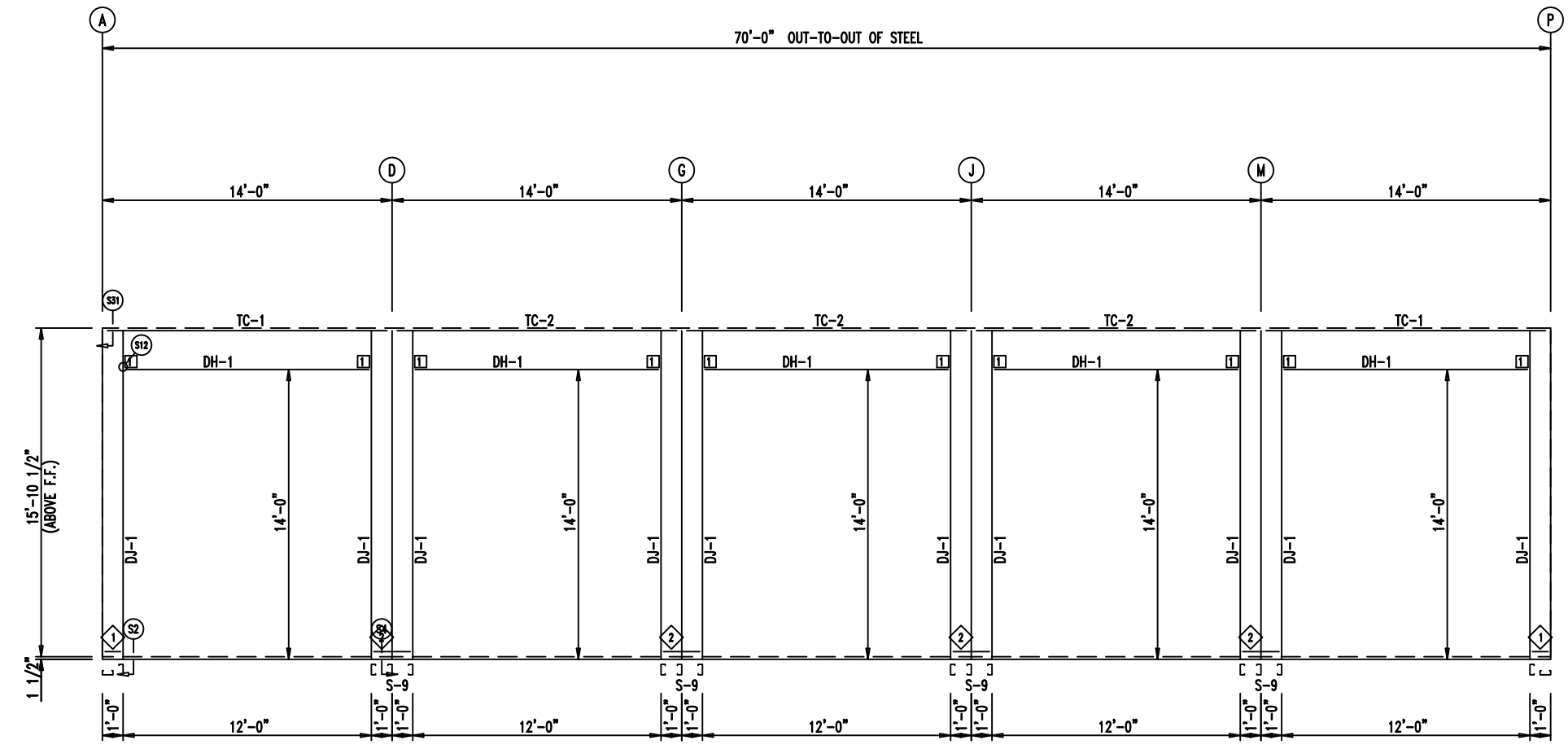
<p>906 West 9th Street Pella, IA 50219 (800) 225-0481 www.pellabuildings.com</p>	DESCRIPTION: ENDWALL DRAWING	
	CUSTOMER: Mega Storage	PROJECT: Bldg 9 and 10
	LOCATION: LEE'S SUMMIT MO	
	DRN. BY: JB	CK'D BY: DES
SCALE: N.T.S.	REV. 00	QUOTATION NO. --
SHEET NO. 5 OF 15		

ID	PART	LENGTH	DETAIL
3	6MCE12	14'-1"	
4	FL-HC6	12'-1"	
5	FL26B	20'-2"	
6	6MC24	14'-1"	
7	FL72	10'-2"	
8	FL835x	16'-0"	TRIM_74
9	FL16C	6"	TRIM_198
10	FL18A	6"	
11	FL18A	6"	
12	FL18D	20'-2"	

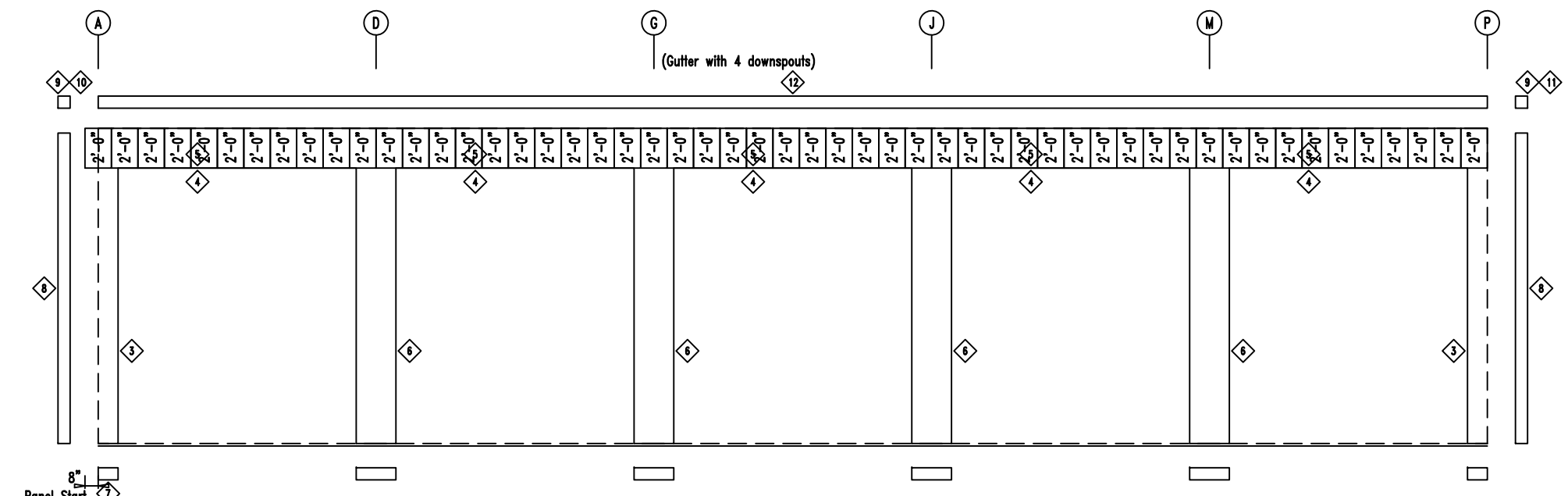
MARK	PART	LENGTH
S-9	6X2C16	16'-0"
DJ-1	6X35C16	16'-0"
TC-1	6X2CH16	13'-11 3/4"
TC-2	6X2CH16	14'-0"
DH-1	6X25C16	11'-11 1/2"

ID	MARK	LENGTH
1	MB612	11 3/4"
2	MB624	1'-11 3/4"

ID	MARK/PART
1	MCLP

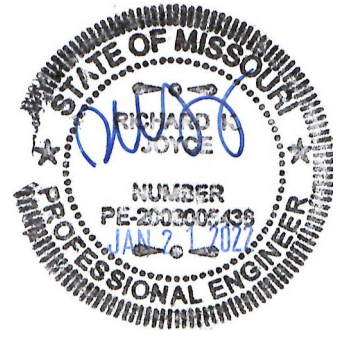


SIDEWALL FRAMING FRAME LINE: 14



SIDEWALL SHEETING & TRIM FRAME LINE: 14

PANELS: 20 Ga. CP - NEED SIG 200



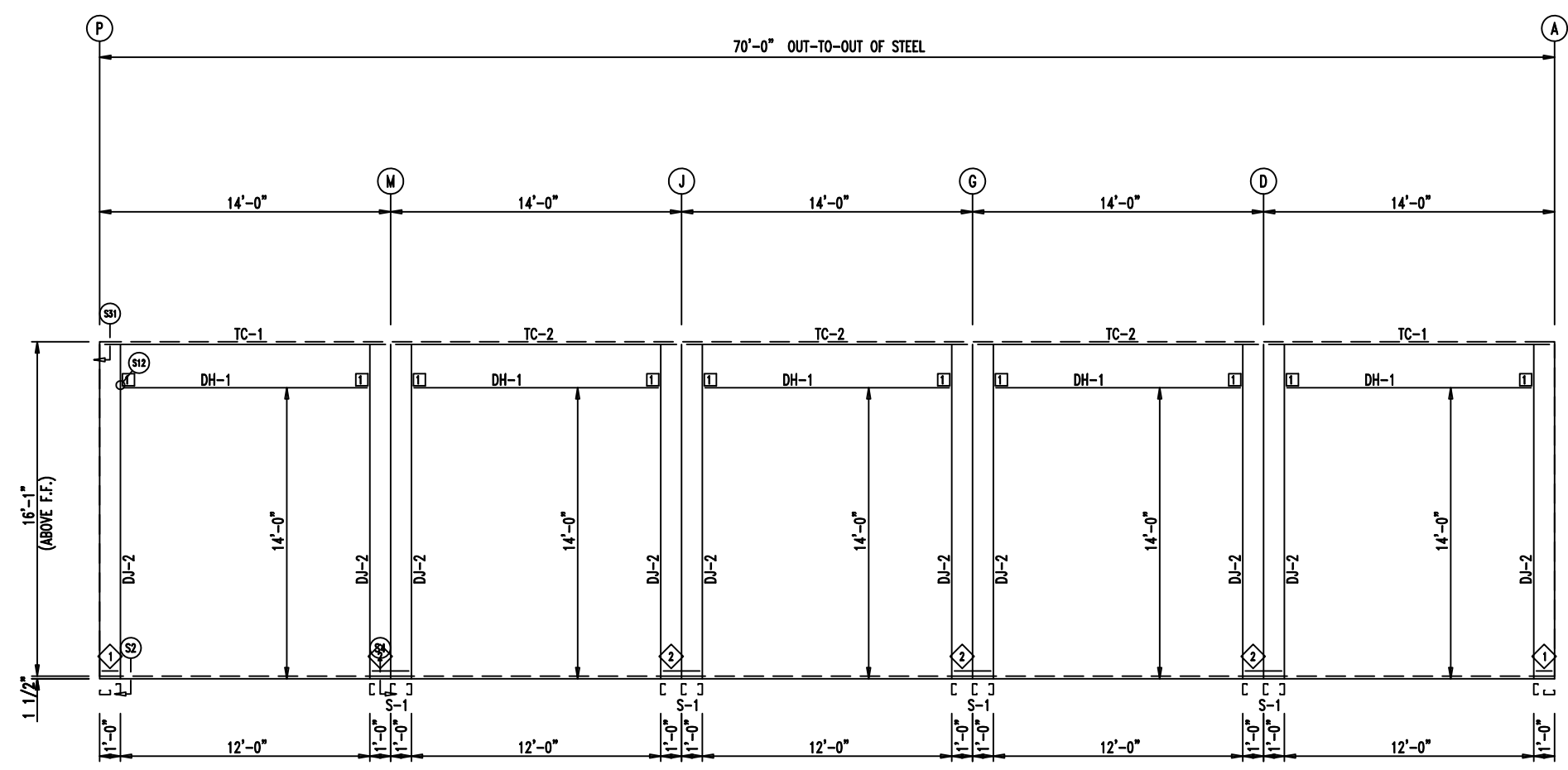
<p>906 West 9th Street Pella, IA 50219 (800) 225-0481 www.pellabuildings.com</p>	DESCRIPTION: SIDEWALL DRAWING		
	CUSTOMER: Mega Storage	PROJECT: Bldg 9 and 10	
	LOCATION: Lee's Summit, MO		
	DRN. BY: JB	CK'D BY: DES	DATE: 1/21/22
SCALE: N.T.S.	REV. 00	QUOTATION NO. --	SHEET NO. 6 OF 15

ID	PART	LENGTH	DETAIL
3	6MCE12	14'-1"	
4	FL-HC6	12'-1"	
5	FL26B	20'-2"	
6	6MC24	14'-1"	
7	FL72	10'-2"	
8	FL72	SCRAP	TRIM_74
9	FL835x	16'-2 1/2"	TRIM_74
10	FL16C	6"	TRIM_198
11	FL18A	6"	
12	FL18A	6"	
13	FL18D	20'-2"	

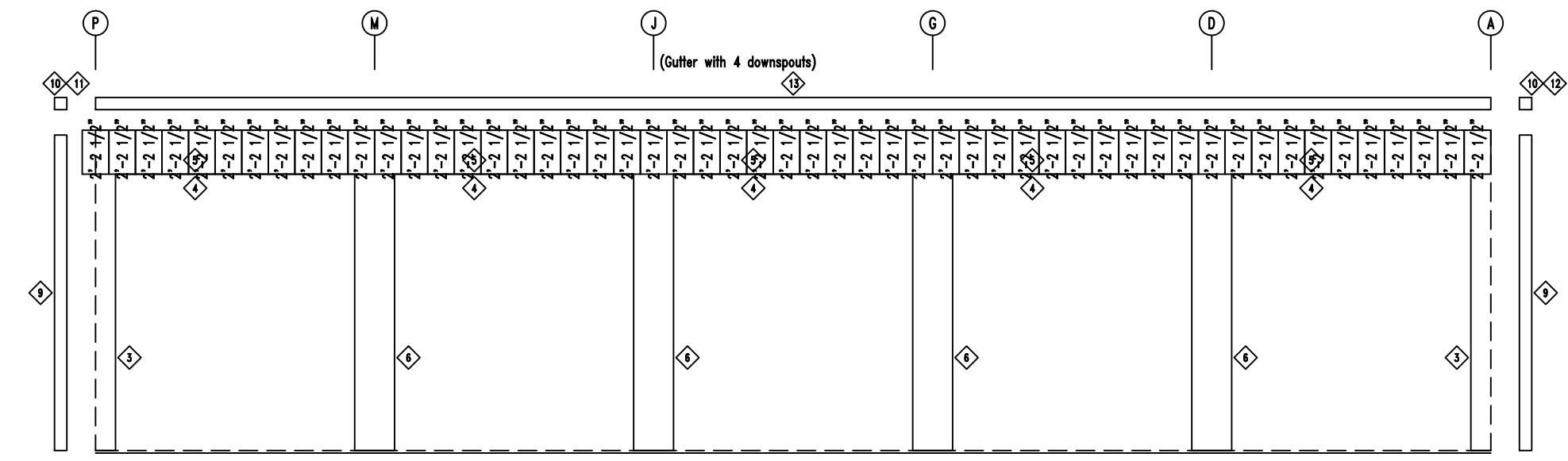
MARK	PART	LENGTH
S-1	6X2C16	16'-2 1/2"
DJ-2	6X35C16	16'-2 1/2"
TC-1	6X2CH16	13'-11 3/4"
TC-2	6X2CH16	14'-0"
DH-1	6X25C16	11'-11 1/2"

ID	MARK	LENGTH
1	MB612	11 3/4"
2	MB624	1'-11 3/4"

ID	MARK/PART
1	MCLP




SIDEWALL FRAMING FRAME LINE: 1



SIDEWALL SHEETING & TRIM FRAME LINE: 1

PANELS: 20 Ga. CP - NEED SIG 200





906 West 9th Street Pella, IA 50219
(800) 225-0481 www.pellabuildings.com

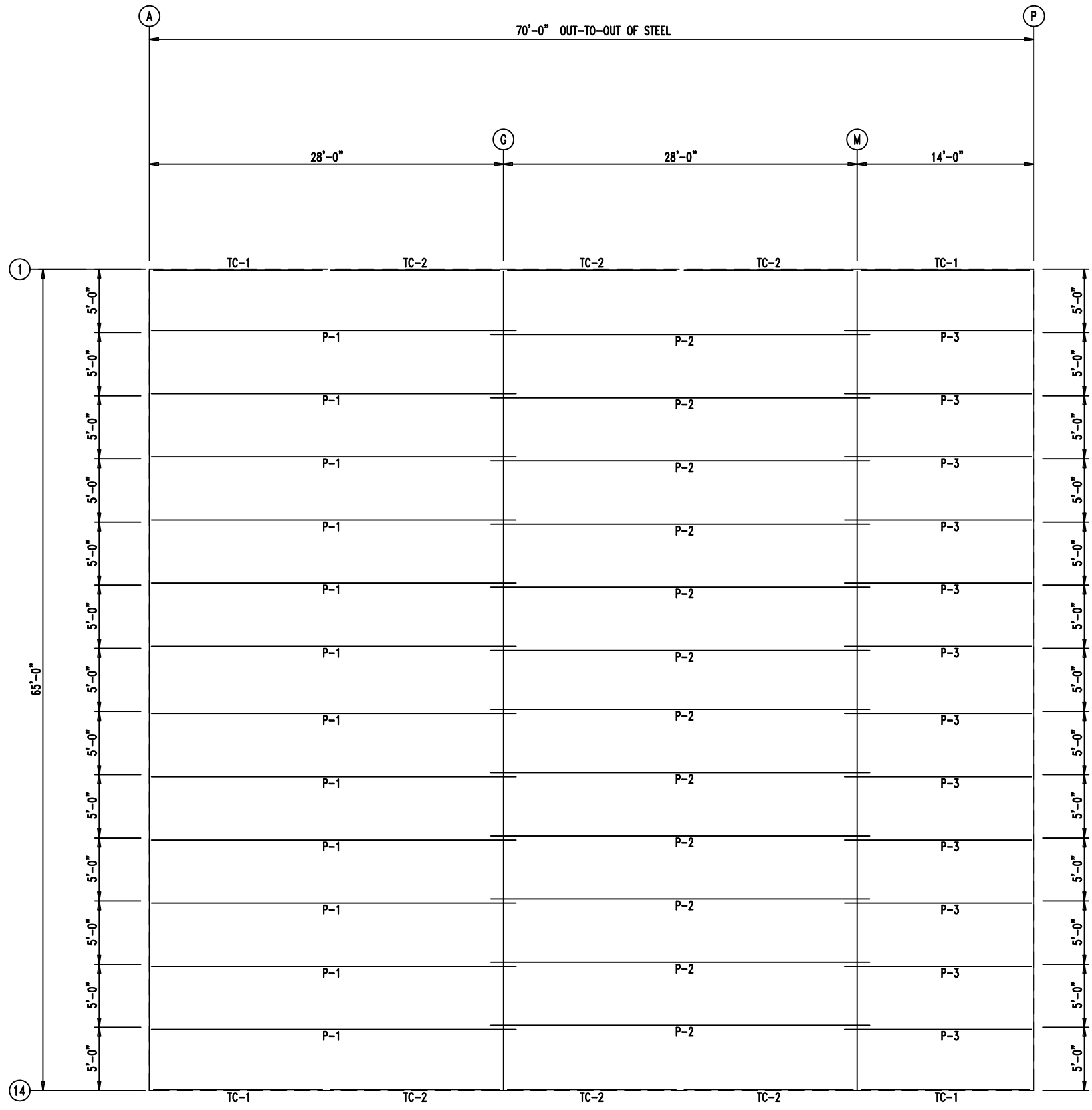
DESCRIPTION: SIDEWALL DRAWING

CUSTOMER: Mega Storage PROJECT: Bldg 9 and 10

LOCATION: Lee's Summit, MO

DRN. BY	CK'D BY	DATE	SCALE	REV.	QUOTATION NO.	SHEET NO.
JB	DES	1/21/22	N.T.S.	00	--	7 OF 15

MEMBER TABLE		
CONSTRUCTION		
As Noted on Plans Review		
MARK	PART	LENGTH
TC-1	6X2CH16	13'-11 3/4"
TC-2	6X2CH16	14'-0"
P-1	6X25Z14	29'-0"
P-2	6X25Z16	30'-0"
P-3	6X25Z16	15'-0"




PURLIN LAP

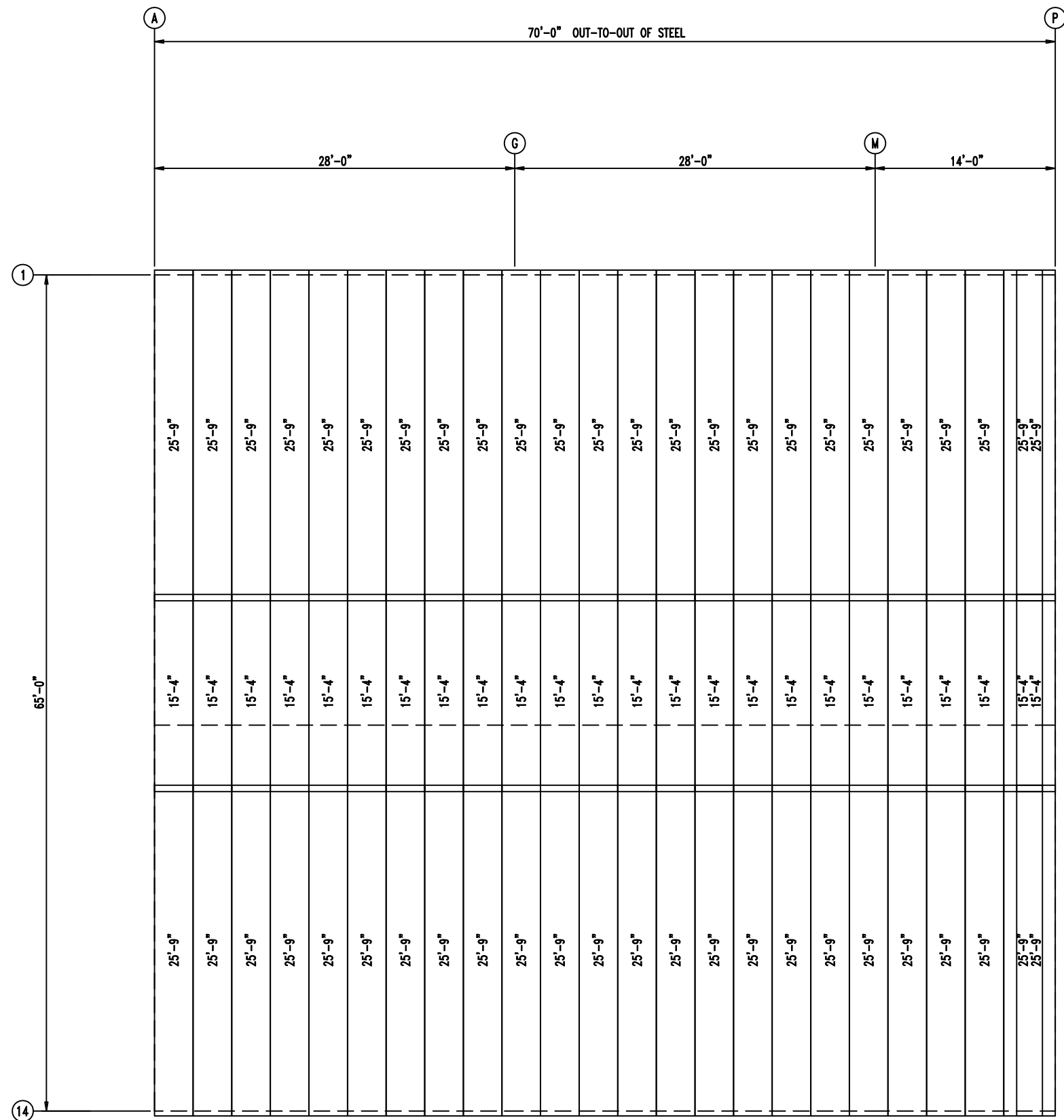
1'-0" / 1'-0"

1'-0" / 1'-0"

ROOF FRAMING




 <p>906 West 9th Street Pella, IA 50219 (800) 225-0481 www.pellabuildings.com</p>	DESCRIPTION: ROOF FRAMING					
	CUSTOMER: Mega Storage	PROJECT: Bldg 9 and 10				
	LOCATION: Lee's Summit, MO					
DRN. BY JB	CK'D BY DES	DATE 1/21/22	SCALE N.T.S.	REV. 00	QUOTATION NO. --	SHEET NO. 8 OF 15



ROOF SHEETING & TRIM
 PANELS: 26 Ga. PR - Galvalume+ w/ Drip Stop

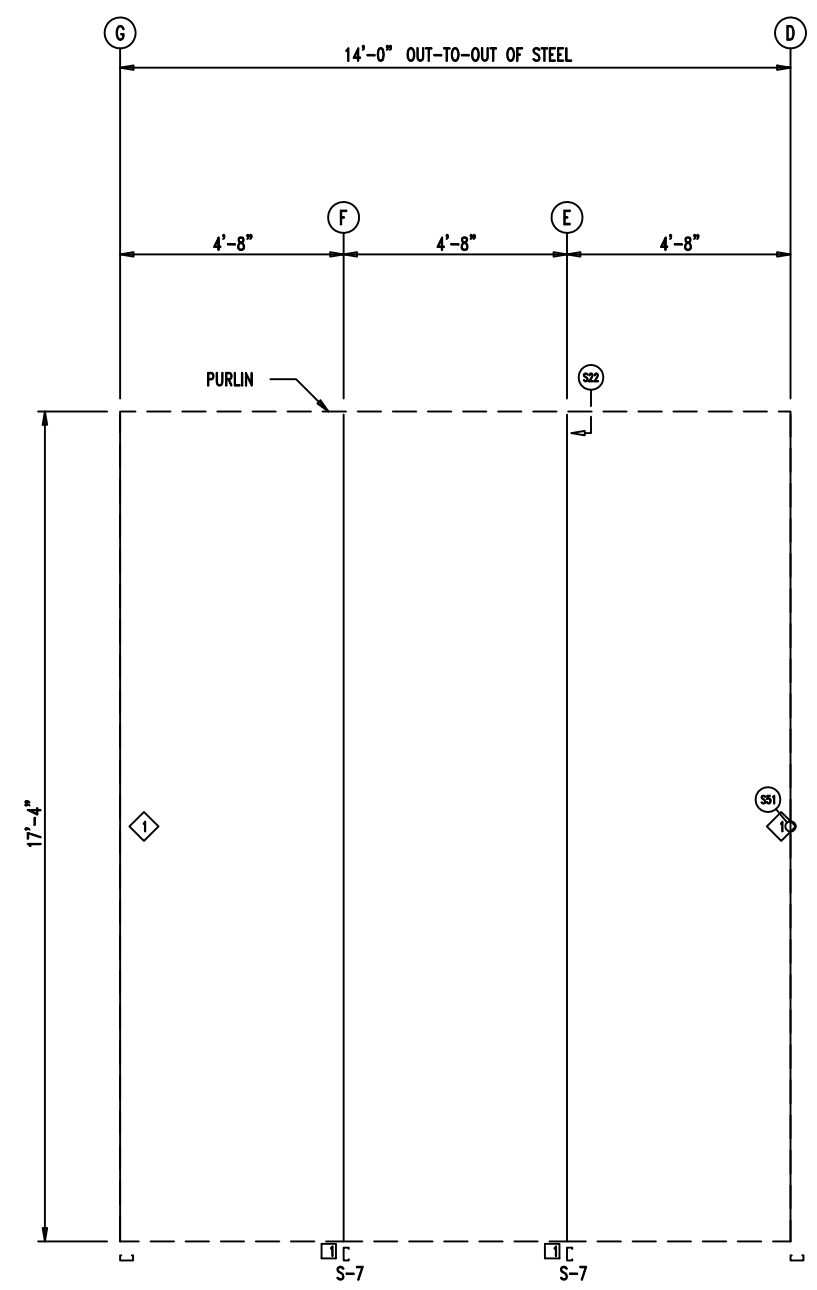


 906 West 9th Street Pella, IA 50219 (800) 225-0481 www.pellabuildings.com		DESCRIPTION: ROOF SHEETING	
		CUSTOMER: Mega Storage	PROJECT: Bldg 9 and 10
LOCATION: Lee's Summit, MO		SCALE: N.T.S.	REV. 00
DRN. BY: JB	CK'D BY: DES	DATE: 1/21/22	QUOTATION NO. --
		SHEET NO. 9 OF 15	

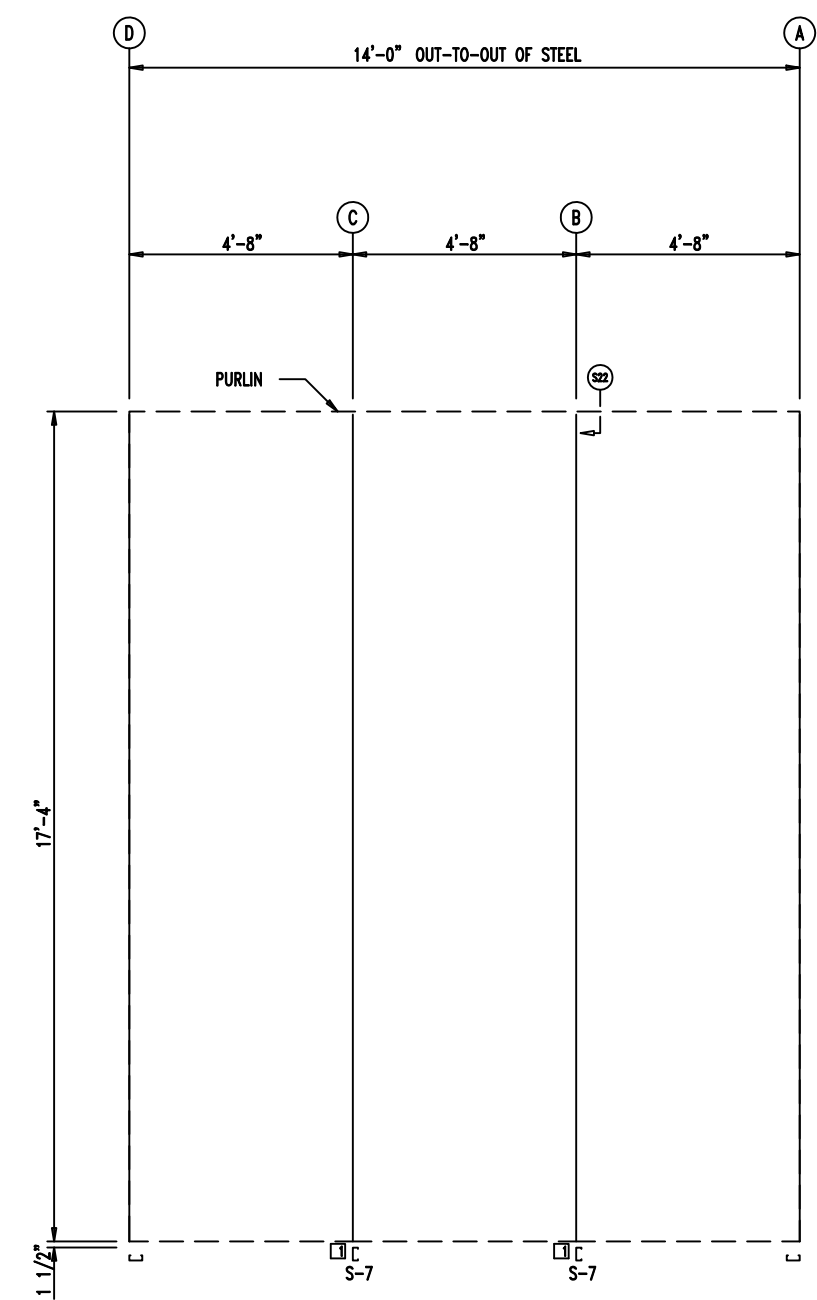
MEMBER TABLE		
MARK	PART	LENGTH
S-7	6K2C16	17'-4"
ANGLE TABLE		
◇ ID	MARK	LENGTH
1	STUD	10'-0"

RELEASED FOR CONSTRUCTION
 As Noted on Plans Review
 Development Services Department
 Lee's Summit, Missouri
 04/19/2022

CONNECTION PLATES		
□ ID	MARK/PART	
1	FC	




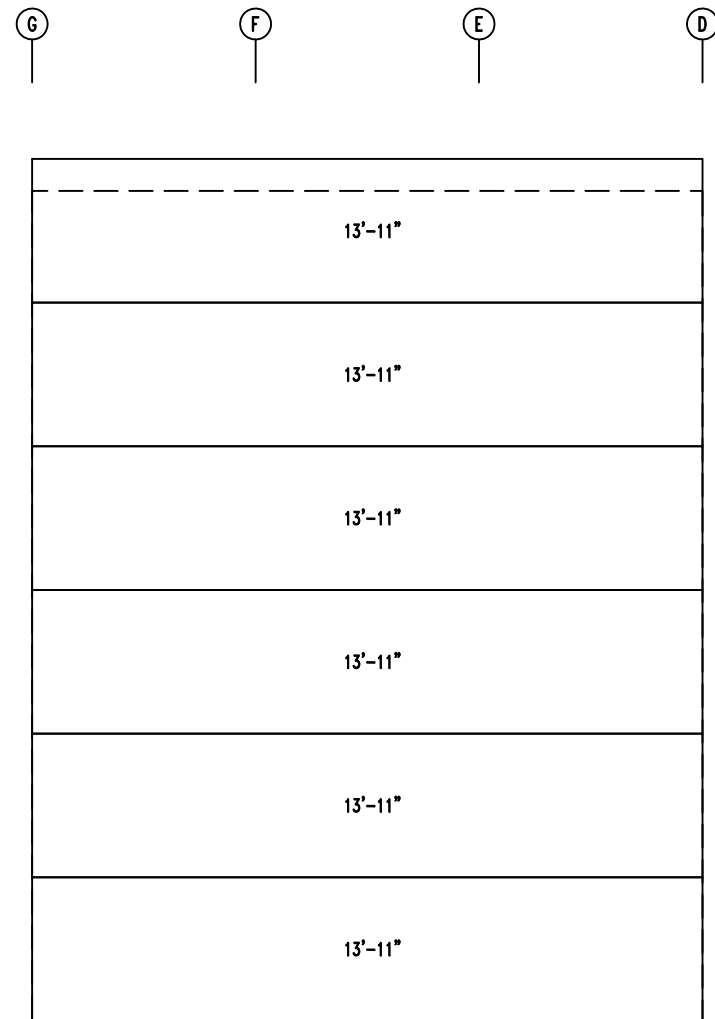
WALL FRAMING FRAME LINE: 7 (Typ of 4)
 GRID LINES: (D-P)



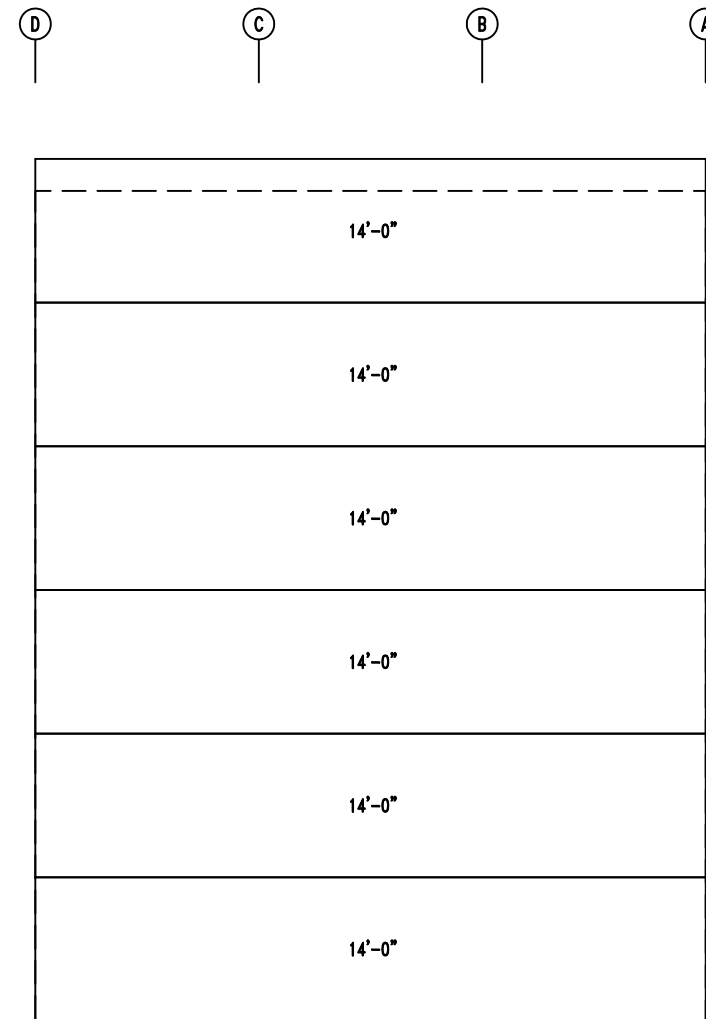
WALL FRAMING FRAME LINE: 7



 906 West 9th Street Pella, IA 50219 (800) 225-0481 www.pellabuildings.com	DESCRIPTION: PARTITION FRAMING					
	CUSTOMER: Mega Storage	PROJECT: Bldg 9 and 10				
	LOCATION: Lee's Summit, MO					
	DRN. BY: JB	CK'D BY: DES	DATE: 1/21/22	SCALE: N.T.S.	REV.: 00	QUOTATION NO.: --




WALL SHEETING & TRIM FRAME LINE: 7 (Typ of 4)
 GRID LINES: (D-P)
 PANELS: 29 Ga. PR - Galvalume +



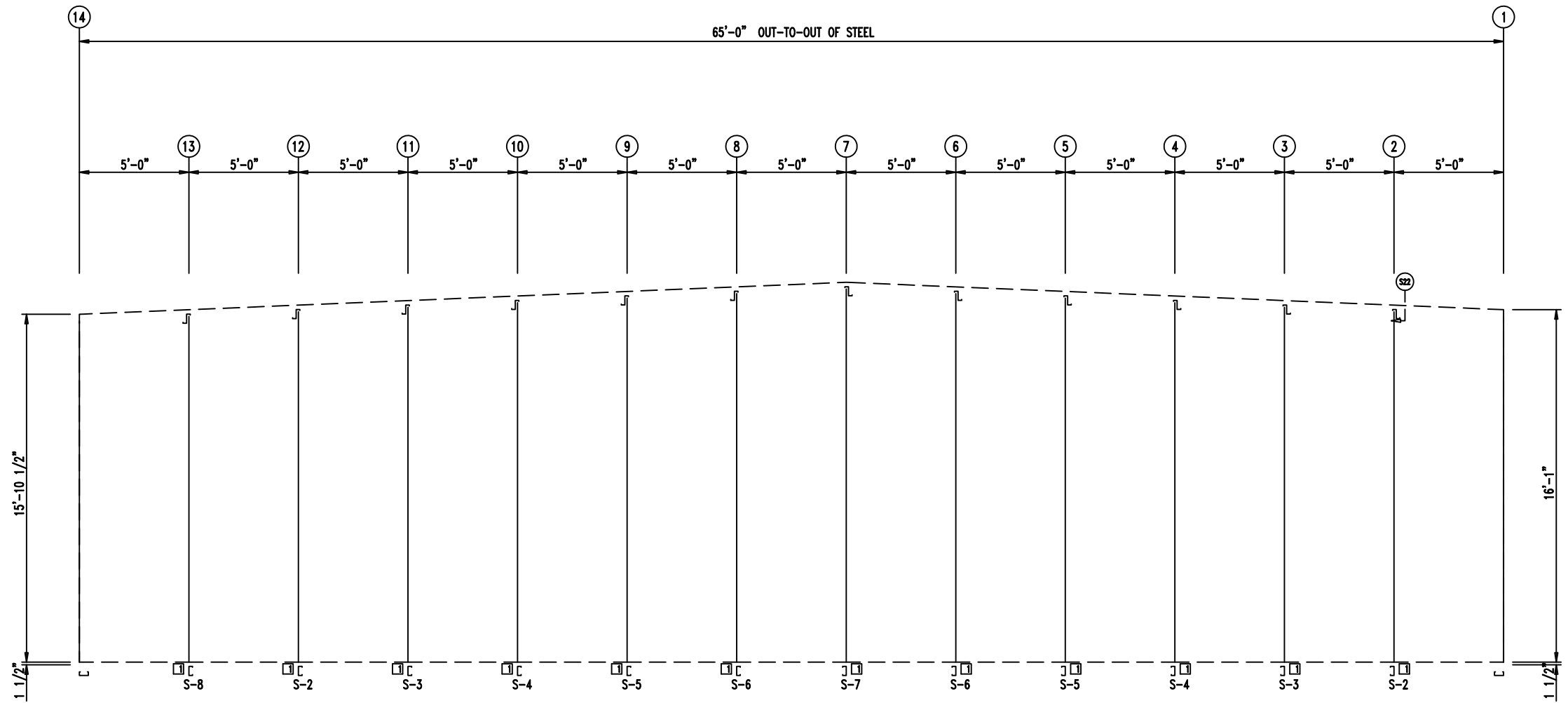
WALL SHEETING & TRIM FRAME LINE: 7
 PANELS: 29 Ga. PR - Galvalume +



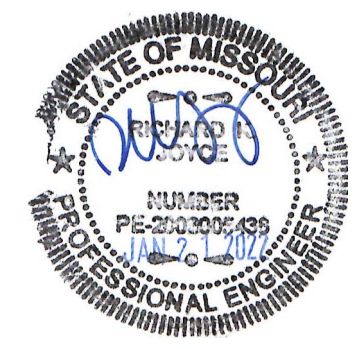
 906 West 9th Street Pella, IA 50219 (800) 225-0481 www.pellabuildings.com		DESCRIPTION: PARTITION SHEETING	
		CUSTOMER: Mega Storage	PROJECT: Bldg 9 and 10
LOCATION: Lee's Summit, MO			
DRN. BY JB	CK'D BY DES	DATE 1/21/22	SCALE N.T.S.
REV. 00	QUOTATION NO. --	SHEET NO. 11 OF 15	

MEMBER TABLE		
RELEASED FOR CONSTRUCTION		
As Noted on Plans Review		
MARK	PART	LENGTH
S-2	6X2C16	16'-3 1/2"
S-3	6X2C16	16'-6"
S-4	6X2C16	16'-8 1/2"
S-5	6X2C16	16'-11"
S-6	6X2C16	17'-1 1/2"
S-7	6X2C16	17'-4"
S-8	6X2C16	16'-1"

CONNECTION PLATES	
ID	MARK/PART
1	FC



WALL FRAMING FRAME LINE: (Typ of 4)



<p>906 West 9th Street Pella, IA 50219 (800) 225-0481 www.pellabuildings.com</p>	DESCRIPTION: PARTITION FRAMING	
	CUSTOMER: Mega Storage	PROJECT: Bldg 9 and 10
	LOCATION: Lee's Summit, MO	
	DRN. BY: JB	CK'D BY: DES
SCALE: N.T.S.	REV. 00	QUOTATION NO. --
		SHEET NO. 12 OF 14



1 1/2"
12

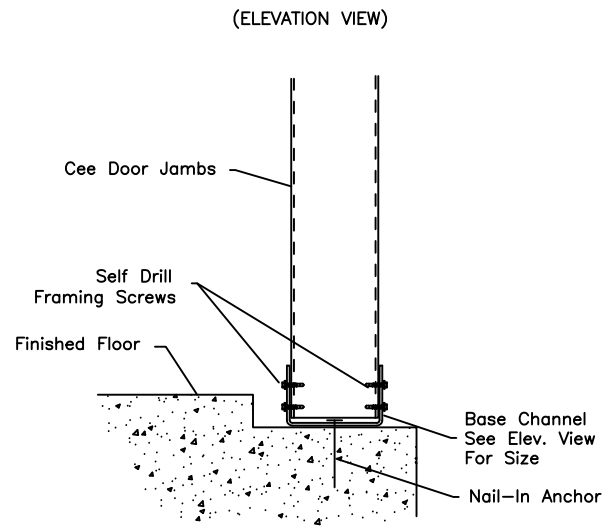
1 1/2"
12

5'-0"	15'-1"	15'-1"	30'-0"
5'-0"	15'-1"	15'-1"	30'-0"
5'-0"	15'-1"	15'-1"	30'-0"
5'-0"	15'-1"	15'-1"	30'-0"
5'-0"	15'-1"	15'-1"	30'-0"
5'-0"	15'-1"	15'-1"	30'-0"

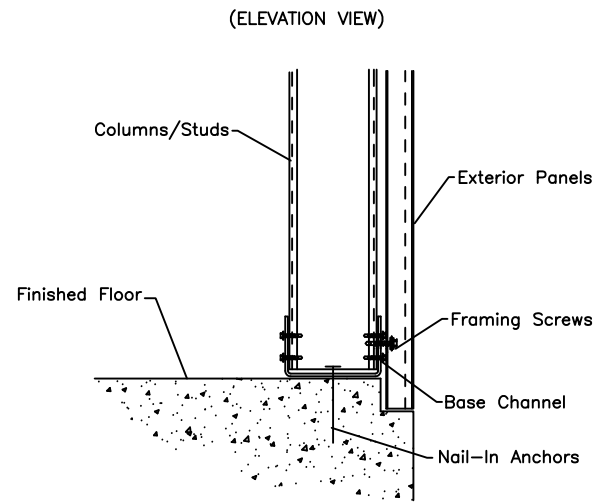
WALL SHEETING & TRIM FRAME LINE: (Typ of 4)
 PANELS: 29 Ga. PR - Galvalume +



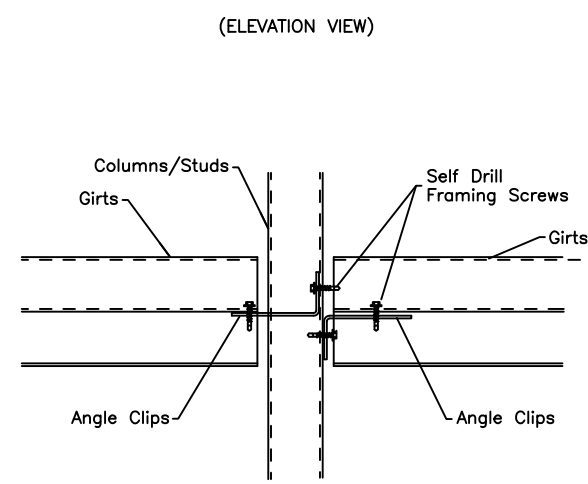
 906 West 9th Street Pella, IA 50219 (800) 225-0481 www.pellabuildings.com	DESCRIPTION: PARTITION SHEETING					
	CUSTOMER: Mega Storage	PROJECT: Bldg 9 and 10				
	LOCATION: Lee's Summit, MO					
	DRN. BY: JB	CK'D BY: DES	DATE: 1/21/22	SCALE: N.T.S.	REV.: 00	QUOTATION NO.: --



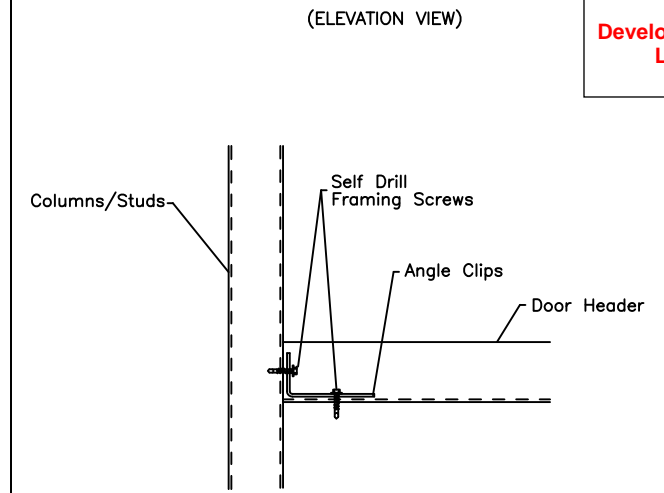
(S2) BASE @ DOOR JAMB



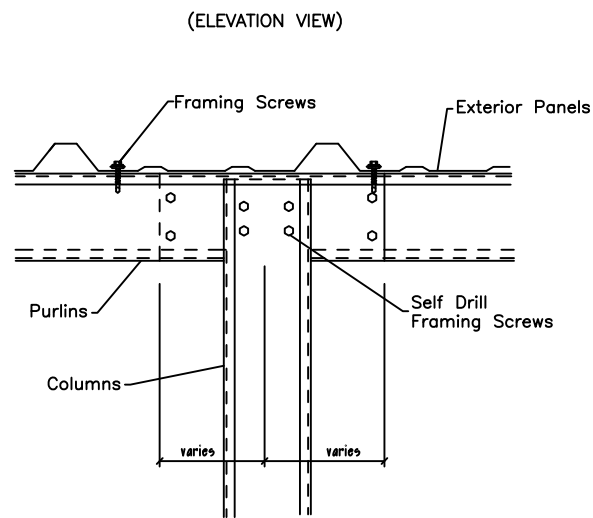
(S4) COLUMN BASE @ SHEETED WALL



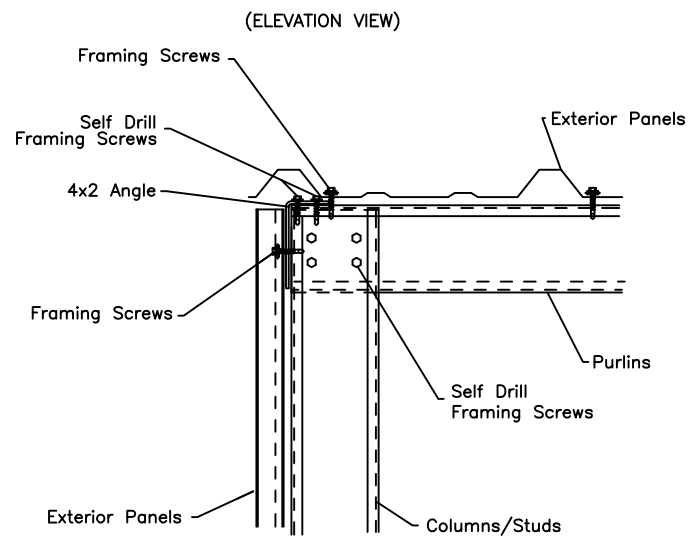
(S11) GIRT CONNECTION



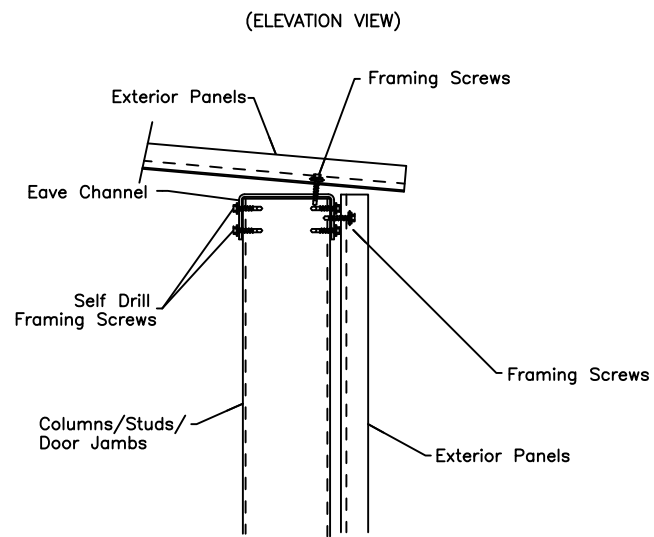
(S12) DOOR HEADER TO JAMB



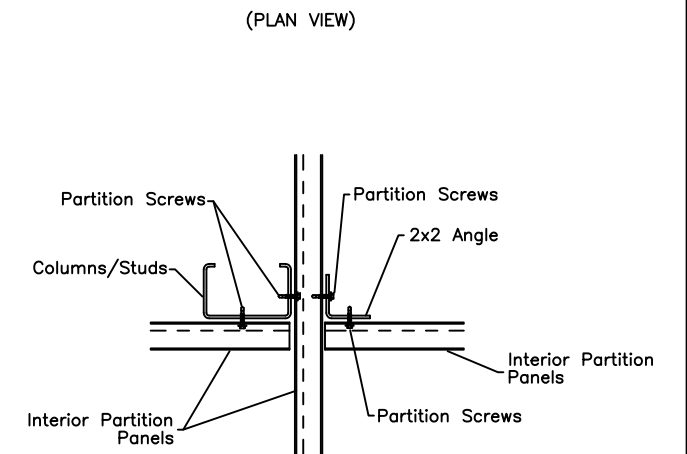
(S22) COLUMN TO PURLIN @ LAP



(S24) RAKE @ SHEETED ENDWALL



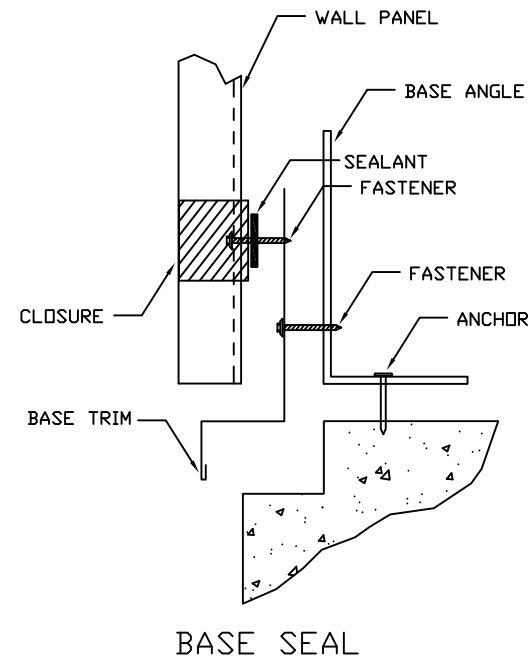
(S31) EAVE



(S51) PARTITION

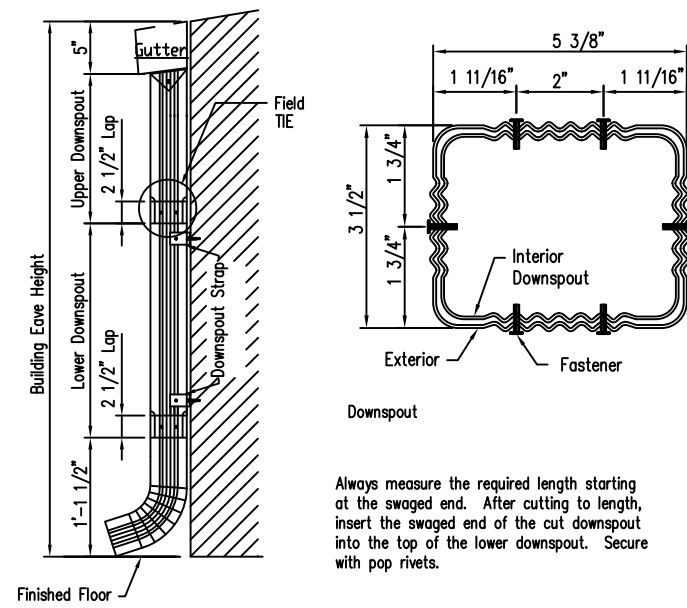


DESCRIPTION: DETAIL DRAWINGS						
CUSTOMER: Mega Storage				PROJECT: Bldg 9 and 10		
LOCATION: Lee's Summit, MO						
DRN. BY	CK'D BY	DATE	SCALE	REV.	QUOTATION NO.	SHEET NO.
JB	DES	1/21/22	N.T.S.	00	--	14 OF 15



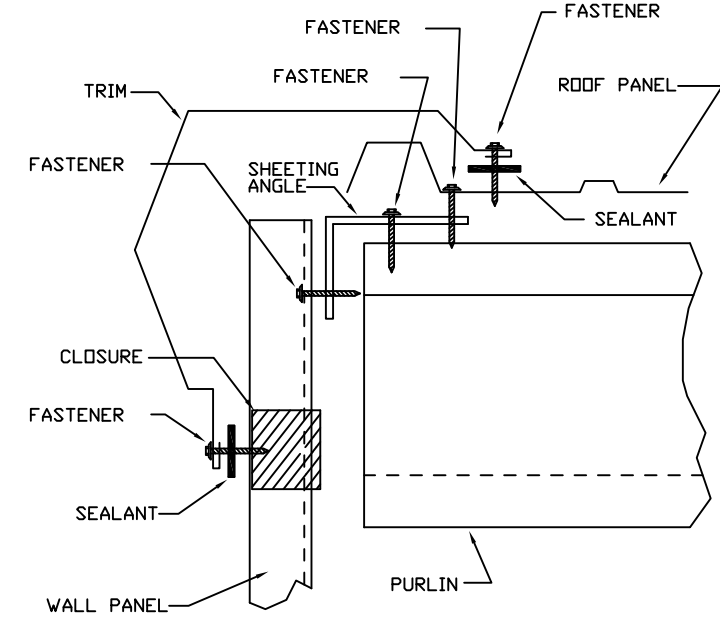
BASE SEAL

TRIM_74



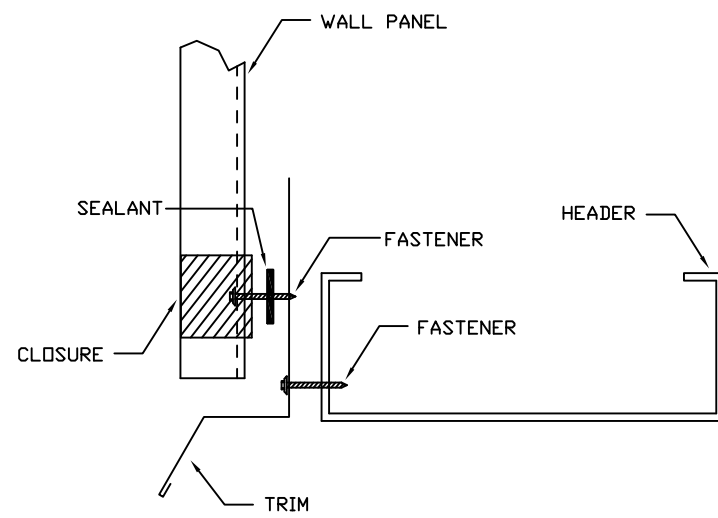
3 1/2" x 5 3/8" Roll Form Downspout Elevation

TRIM_175 1. A Downspout Strap is required at all Downspout Splices.



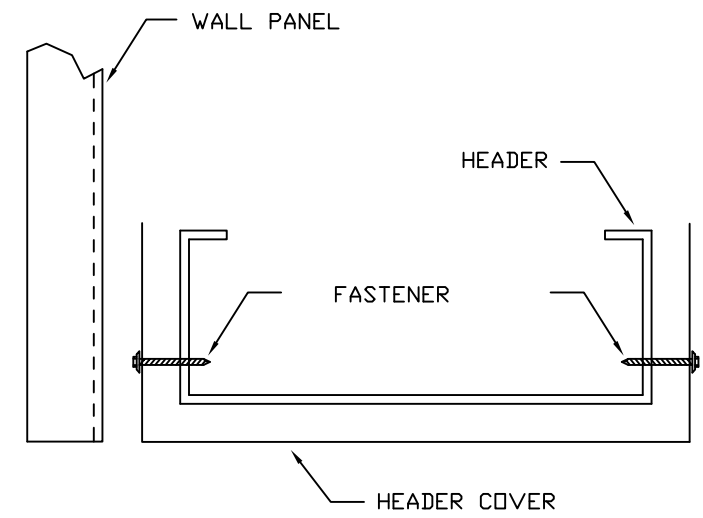
GABLE

TRIM_229



HEADER

TRIM_232



HEADER COVER

TRIM_235



DESCRIPTION: DETAIL DRAWINGS						
CUSTOMER: Mega Storage				PROJECT: Bldg 9 and 10		
LOCATION: Lee's Summit, MO						
DRN. BY	CK'D BY	DATE	SCALE	REV.	QUOTATION NO.	SHEET NO.
JB	DES	1/21/22	N.T.S.	00	--	15 OF 15