

# PELLA

BUILDING SYSTEMS

906 West 9th Street Pella, IA 50219  
 (800) 225-0481 www.pellabuildings.com

**BUILDING LOADS / DESCRIPTION:**

WIDTH: 40 LENGTH: 112 HEIGHT: 14.79 / 16.46  
 (BUILDING DIMENSIONS ARE NOMINAL. REFER TO PLANS).

THIS STRUCTURE IS DESIGNED UTILIZING THE LOADS INDICATED AND APPLIED AS REQUIRED BY : IBC 18

THE CONTRACTOR IS TO CONFIRM THAT THESE LOADS COMPLY WITH THE REQUIREMENTS OF THE LOCAL BUILDING DEPARTMENT.

ROOF DEAD LOAD: 2.000 PSF (ROOF PANELS & PURLINS)

COLLATERAL LOAD: 0.5 PSF

ROOF LIVE LOAD: 20.00 PSF

ROOF SNOW LOAD: 16.8 PSF

GROUND SNOW LOAD: 20.00 PSF

SNOW EXPOSURE: 1.0

THERMAL FACTOR: 1.2

BASIC WIND SPEED: 110 MPH

WIND EXPOSURE: C

INTERNAL PRESSURE COEFF.:

0.18 / 0.18

IMPORTANCE FACTORS:

WIND LOAD 1.0

SNOW LOAD 1.0

SEISMIC LOAD 1.0

SITE CLASS: D

SEISMIC ZONE: B

SEISMIC DESIGN CATEGORY: B

SPECTRAL RESPONSE COEFF.

S<sub>ds</sub> 0.107

S<sub>d1</sub> 0.109

MAPPED SPECTRAL RESPONSE ACC.

S<sub>s</sub> 0.100

S<sub>1</sub> 0.068

**ROOF PANELS:**

COLOR: Galvalume

**WALL PANELS:**

COLOR: TBD

**TRIM COLORS:**

CABLE: TBD

CORNER: TBD

EAVE: TBD

FRAMED OPENINGS: TBD

**LINER PANELS:**

COLOR: Galvalume

**LINER TRIM:**

COLOR: Galvalume

**DEFLECTION LIMITS:**

EW COL: 180  
 EW RAF LIVE: 180  
 EW RAF WIND: 180  
 WALL GIRT: 90  
 PURL LIVE: 180  
 PURL WIND: 150  
 WALL PANEL: 60  
 ROOF PANEL LIVE: 60  
 ROOF PANEL WIND: 60  
 RF HORIZONTAL: 180  
 RF VERTICAL: 60  
 WIND BENT: 60

**BUILDER / CONTRACTOR RESPONSIBILITIES**

IT IS THE RESPONSIBILITY OF THE BUILDER/CONTRACTOR TO INSURE THAT ALL PROJECT PLANS AND SPECIFICATIONS COMPLY WITH THE APPLICABLE REQUIREMENTS GOVERNING BUILDING AUTHORITIES. THE SUPPLYING OF SEALED ENGINEERING DATA AND DRAWINGS FOR THE METAL BUILDING SYSTEM DOES NOT IMPLY OR CONSTITUTE AN AGREEMENT THAT THE METAL BUILDING SYSTEM MANUFACTURER OR ITS DESIGN ENGINEER IS ACTING AS THE ENGINEER OF RECORD OR DESIGN PROFESSIONAL FOR A CONSTRUCTION PROJECT.

THE CONTRACTOR MUST SECURE ALL REQUIRED APPROVALS AND PERMITS FROM THE APPROPRIATE AGENCY AS REQUIRED. APPROVAL OF THE METAL BUILDING SYSTEM MANUFACTURER'S DRAWINGS AND CALCULATIONS INDICATE THAT THE METAL BUILDING SYSTEM MANUFACTURER CORRECTLY INTERPRETED AND APPLIED THE REQUIREMENTS OF THE CONTRACT DRAWINGS AND SPECIFICATIONS. (SECT. 4.2.1 AISC CODE OF STANDARD PRACTICES, 9TH ED.) WHERE DISCREPANCIES EXIST BETWEEN THE METAL BUILDING SYSTEM MANUFACTURER'S STRUCTURAL STEEL PLANS AND THE PLANS FOR OTHER TRADES, THE STRUCTURAL STEEL PLANS SHALL GOVERN. (SECT. 3.3 AISC CODE OF STANDARD PRACTICE 9TH ED.)

DESIGN CONSIDERATIONS OF ANY MATERIALS IN THE STRUCTURE WHICH ARE NOT FURNISHED BY THE METAL BUILDING SYSTEM MANUFACTURER ARE THE RESPONSIBILITY OF THE CONTRACTORS AND ENGINEERS OTHER THAN THE METAL BUILDING SYSTEM MANUFACTURER'S ENGINEER UNLESS SPECIFICALLY INDICATED.

THE CONTRACTOR IS RESPONSIBLE FOR ALL ERECTION OF STEEL AND ASSOCIATED WORK IN COMPLIANCE WITH THE METAL BUILDING SYSTEM MANUFACTURER "FOR CONSTRUCTION" DRAWINGS.

ALL BRACING AS SHOWN AND PROVIDED BY THE METAL BUILDING SYSTEM MANUFACTURER FOR THIS BUILDING IS REQUIRED AND SHALL BE INSTALLED BY THE ERECTOR AS A PERMANENT PART OF THE STRUCTURE.

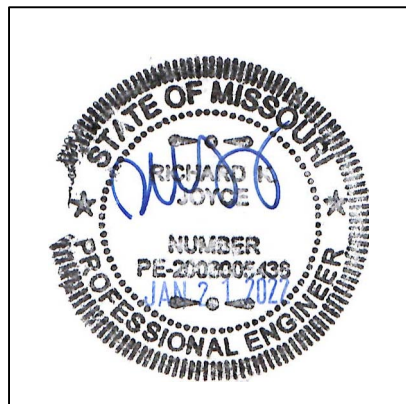
TEMPORARY SUPPORTS, SUCH AS TEMPORARY GUYS, BRACES, FALSE WORK, CRIBBING OR OTHER ELEMENTS REQUIRED FOR THE ERECTION OPERATION WILL BE DETERMINED AND FURNISHED AND INSTALLED BY THE ERECTOR. THESE TEMPORARY SUPPORTS WILL SECURE THE STEEL FRAMING, OR ANY PARTLY ASSEMBLED STEEL FRAMING, AGAINST LOADS COMPARABLE IN INTENSITY TO THOSE FOR WHICH THE STRUCTURE WAS DESIGNED, RESULTING FROM WIND, SEISMIC FORCES AND ERECTION OPERATIONS, BUT NOT THE LOADS RESULTING FROM THE PERFORMANCE OF WORK BY OR THE ACTS OF OTHERS, NOR SUCH UNPREDICTABLE LOADS AS THOSE DUE TO TORNADO, EXPLOSION, OR COLLISION. (SECT. 7.9.1 AISC CODE OF STANDARD PRACTICE, 9TH ED.)

**WARNING:** IN NO CASE SHOULD GALVALUME STEEL PANELS BE USED IN CONJUNCTION WITH LEAD OR COPPER. BOTH LEAD AND COPPER HAVE HARMFUL CORROSION EFFECTS ON THE ALUMINUM ZINC ALLOY COATING WHEN THEY ARE USED IN CONTACT WITH GALVALUME STEEL PANELS. EVEN RUN-OFF FROM COPPER FLASHING, WIRING, OR TUBING ONTO GALVALUME SHOULD BE AVOIDED.

**APPROVAL NOTES**

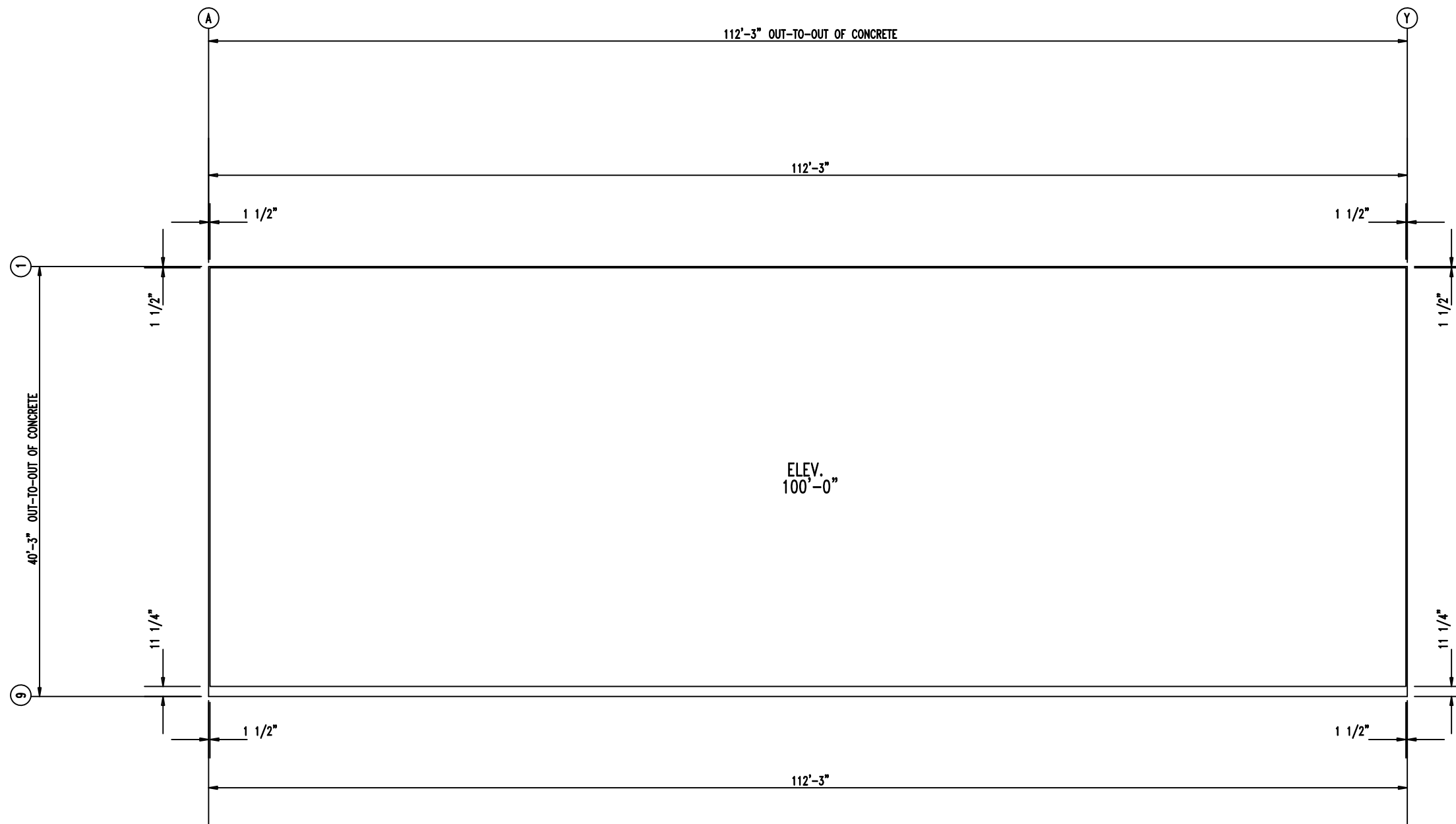
THE FOLLOWING CONDITIONS APPLY IN THE EVENT THAT THESE DRAWINGS ARE USED AS APPROVAL DRAWINGS: IT IS IMPERATIVE THAT ANY CHANGES TO THESE DRAWINGS BE MADE IN CONTRASTING INK (PREFERABLY RED INK), HAVE ALL INSTANCES OF CHANGE CLEARLY INDICATED, AND BE LEGIBLE AND UNAMBIGUOUS. A SIGNATURE AND DATE IS REQUIRED ON ALL PAGES. MANUFACTURER RESERVES THE RIGHT TO RE-SUBMIT DRAWINGS WITH EXTENSIVE OR COMPLEX CHANGES REQUIRED TO AVOID MISFABRICATION. THIS MAY IMPACT THE DELIVERY SCHEDULE. APPROVAL OF THESE DRAWINGS INDICATES CONCLUSIVELY THAT THE METAL BUILDING SYSTEM MANUFACTURER HAS CORRECTLY INTERPRETED THE CONTRACT REQUIREMENTS, AND FURTHER CONSTITUTES AGREEMENT THAT THE BUILDING AS DRAWN WITH INDICATED CHANGES REPRESENTS THE TOTAL OF THE MATERIALS TO BE SUPPLIED BY MANUFACTURER. ANY CHANGES NOTED ON THE DRAWINGS NOT IN COMPLIANCE WITH THE TERMS AND REQUIREMENTS OF THE CONTRACT BETWEEN MANUFACTURER AND ITS CUSTOMER ARE NOT BINDING ON MANUFACTURER UNLESS SUBSEQUENTLY SPECIFICALLY ACKNOWLEDGED AND AGREED TO IN WRITING BY CHANGE ORDER OR SEPARATE DOCUMENTATION. MANUFACTURER RECOGNIZES THAT RUBBER STAMPS ARE ROUTINELY USED FOR INDICATING APPROVAL, DISAPPROVAL, REJECTION, OR MERE REVIEW OF THE DRAWINGS SUBMITTED. HOWEVER, MANUFACTURER DOES NOT ACCEPT CHANGES OR ADDITIONS TO CONTRACTUAL TERMS AND CONDITIONS THAT MAY APPEAR WITH USE OF A STAMP OR SIMILAR INDICATION OF APPROVAL, DISAPPROVAL, ETC. SUCH LANGUAGE APPLIED TO MANUFACTURER'S DRAWINGS BY THE CUSTOMER, ARCHITECT, ENGINEER, OR ANY OTHER PARTY WILL BE CONSIDERED AS UNACCEPTABLE ALTERNATIONS TO THESE DRAWING NOTES, AND WILL NOT ALTER THE CONTRACTUAL RIGHTS AND OBLIGATIONS EXISTING BETWEEN MANUFACTURER AND ITS CUSTOMER.

**IMPORTANT NOTE: FINAL DETAILING, FABRICATION, AND DELIVERY DATE OF THIS PROJECT CANNOT BE COMPLETED UNTIL THE SIGNED APPROVALS ARE RETURNED TO THE METAL BUILDING MANUFACTURER.**

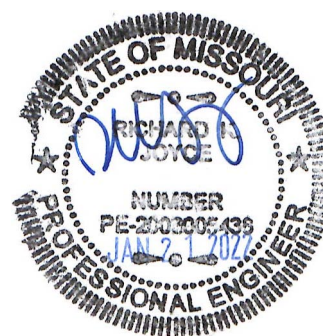


△		
△		
△		
△		FOR CONSTRUCTION
△	1/21/22	FOR APPROVAL
REV.	DATE	REVISION

PURCHASER: Mega Storage  
 PROJECT: Lee's Summit, MO  
 JOB NUMBER: 2022-03



ANCHOR PLAN



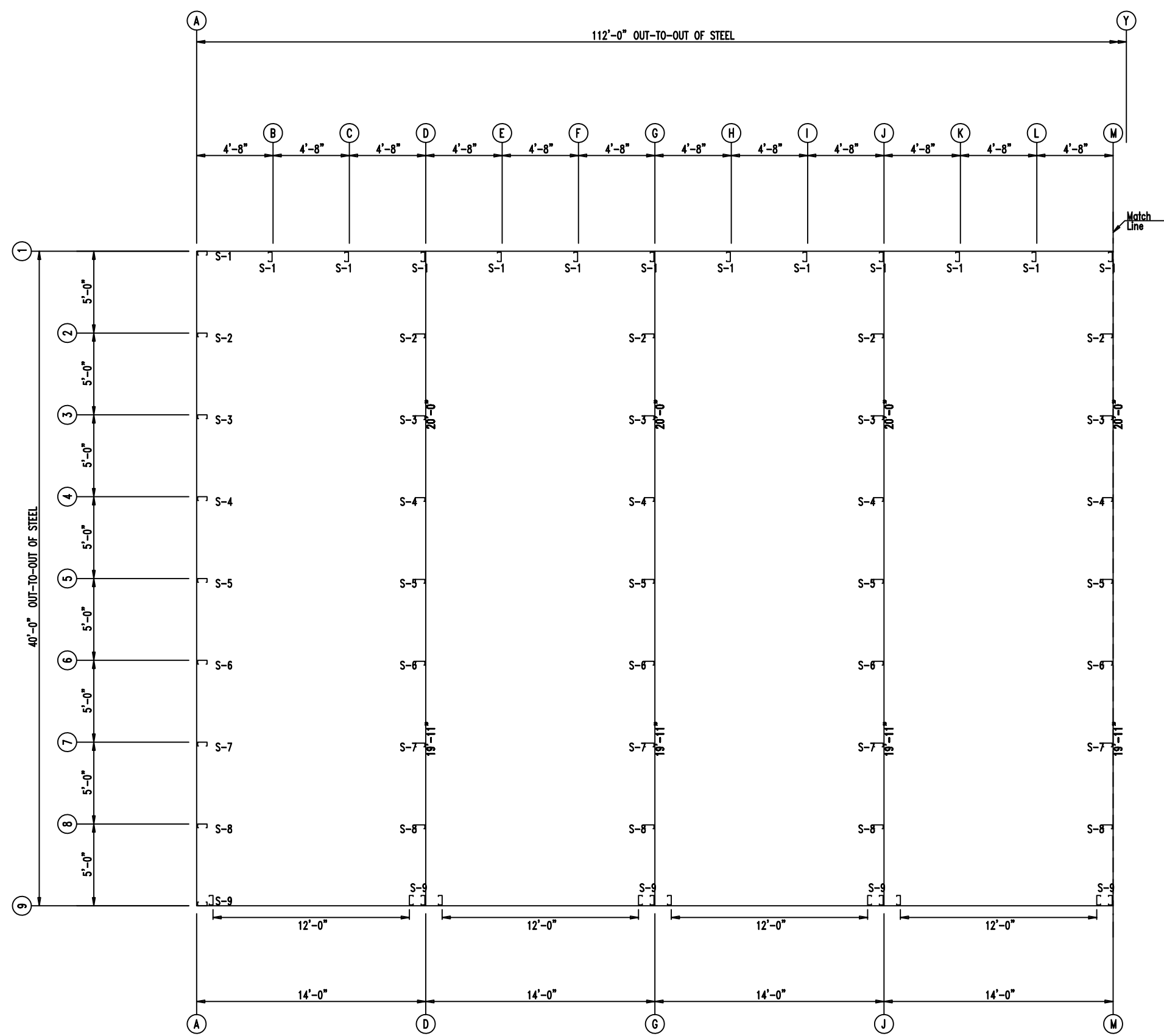
906 West 9th Street Pella, IA 50219  
(800) 225-0481 www.pellabuildings.com

DESCRIPTION: ANCHOR PLAN					
CUSTOMER: Mega Storage			PROJECT: Bldg 4 and 5		
LOCATION: Lee's Summit, MO					
DRN. BY JB	CK'D BY DES	DATE 1/21/22	SCALE N.T.S.	REV. 00	QUOTATION NO. --
				SHEET NO. 2	OF 20

MEMBER TABLE		
MARK	PART	LENGTH
S-1	6X2C16	14'-9 1/2"
S-2	6X2C16	15'-0"
S-3	6X2C16	15'-2 1/2"
S-4	6X2C16	15'-7 1/2"
S-5	6X2C16	15'-10"
S-6	6X2C16	16'-0 1/2"
S-7	6X2C16	16'-3"
S-8	6X2C16	16'-7"
S-9	6X2C16	16'-7"

CONSTRUCTION  
As Noted on Plans Review

Development Services Department  
Lee's Summit, Missouri  
04/15/2022



FLOOR PLAN

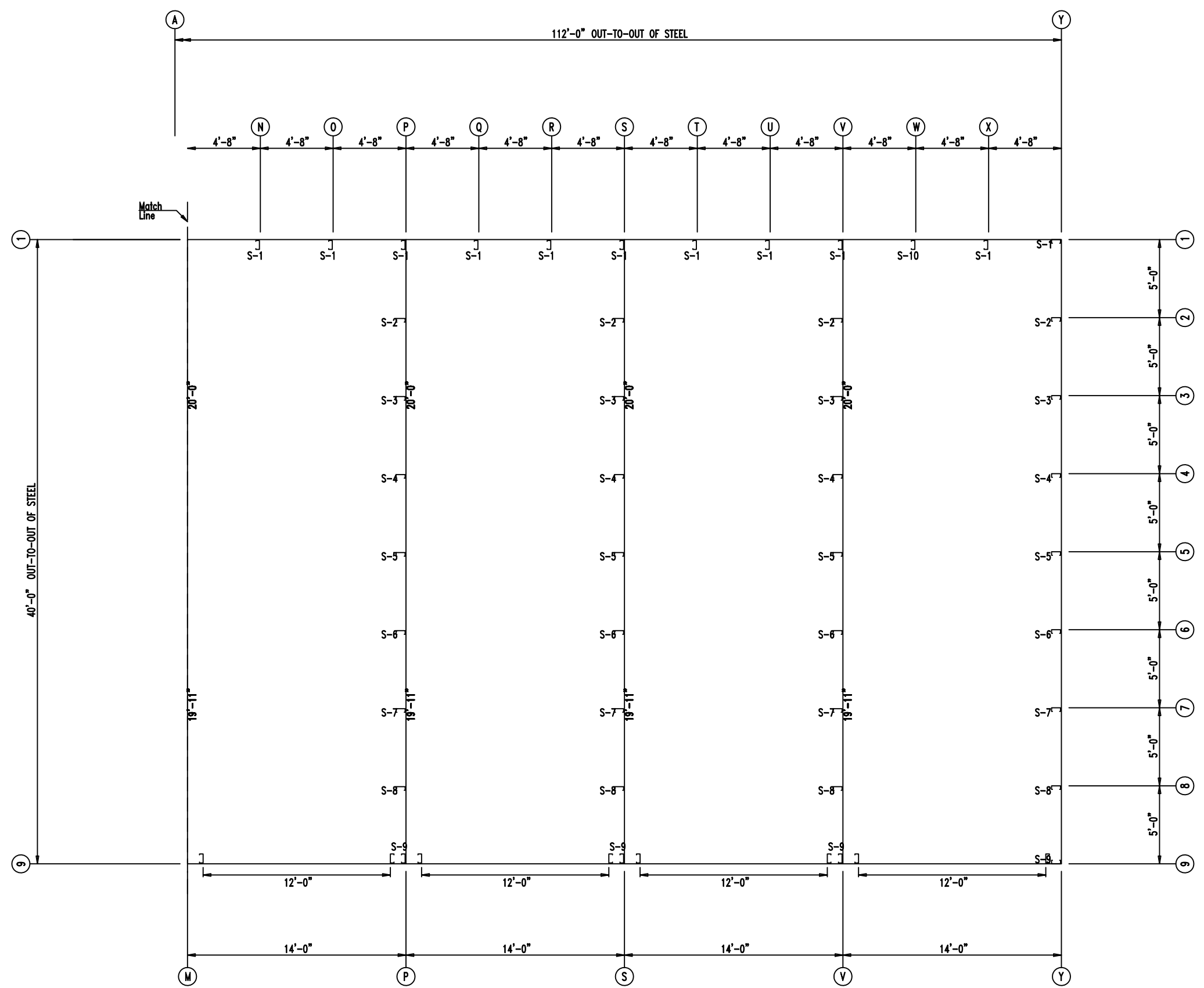


<p>PELLA BUILDING SYSTEMS</p> <p>906 West 9th Street Pella, IA 50219 (800) 225-0481 www.pellabuildings.com</p>	DESCRIPTION: FLOOR PLAN					
	CUSTOMER: Mega Storage	PROJECT: Bldg 4 and 5				
	LOCATION: Lee's Summit, MO					
DRN. BY JB	CK'D BY DES	DATE 1/21/22	SCALE N.T.S.	REV. 00	QUOTATION NO. --	SHEET NO. 3 OF 20

MEMBER TABLE		
MARK	PART	LENGTH
S-1	6X2C16	14'-9 1/2"
S-2	6X2C16	15'-0"
S-3	6X2C16	15'-2 1/2"
S-4	6X2C16	15'-7 1/2"
S-5	6X2C16	15'-10"
S-6	6X2C16	16'-0 1/2"
S-7	6X2C16	16'-3"
S-8	6X2C16	16'-7"
S-9	6X2C16	14'-9 1/2"
S-10	6X25C14	


CONSTRUCTION  
As Noted on Plans Review

Development Services Department  
Lee's Summit, Missouri  
04/15/2022



FLOOR PLAN



 <p>906 West 9th Street Pella, IA 50219 (800) 225-0481 www.pellabuildings.com</p>	DESCRIPTION: FLOOR PLAN	
	CUSTOMER: Mega Storage	PROJECT: Bldg 4 and 5
	LOCATION: Lee's Summit, MO	
	DRN. BY: JB	CK'D BY: DES
SCALE: N.T.S.	REV. 00	QUOTATION NO. --
SHEET NO. 4 OF 20		

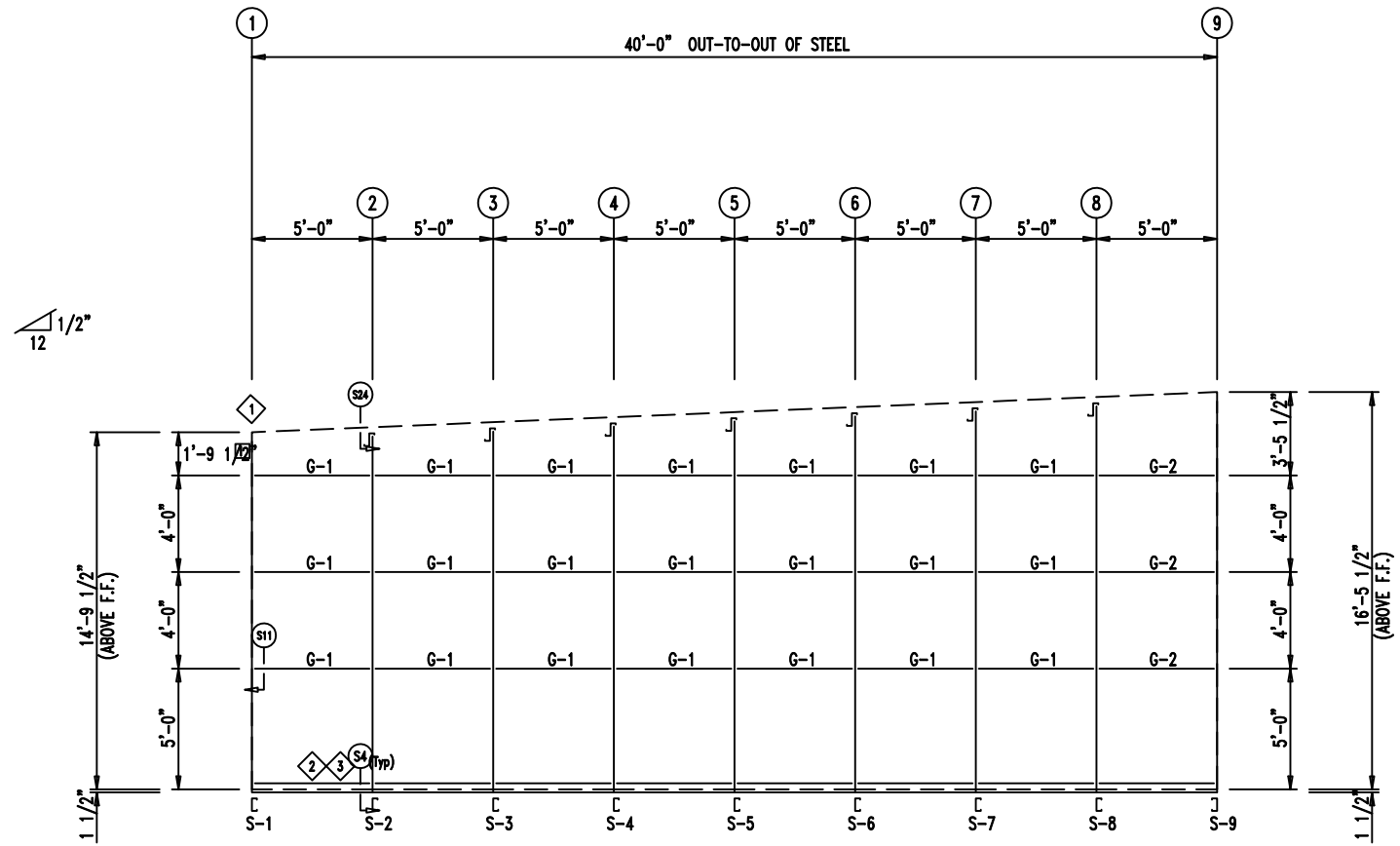
ID	PART	LENGTH	DETAIL
4	FL72	10'-2"	TRIM 74
5	FL16A	6"	
6	FL16A	6"	
7	FL16D	20'-2"	TRIM 229

MARK	PART	LENGTH
S-1	6X2C16	14'-9 1/2"
S-2	6X2C16	15'-0"
S-3	6X2C16	15'-2 1/2"
S-4	6X2C16	15'-5"
S-5	6X2C16	15'-7 1/2"
S-6	6X2C16	15'-10"
S-7	6X2C16	16'-0 1/2"
S-8	6X2C16	16'-3"
S-9	6X2C16	16'-7"
G-1	4X25Z16	4'-9 1/2"
G-2	4X25Z16	4'-7 1/2"

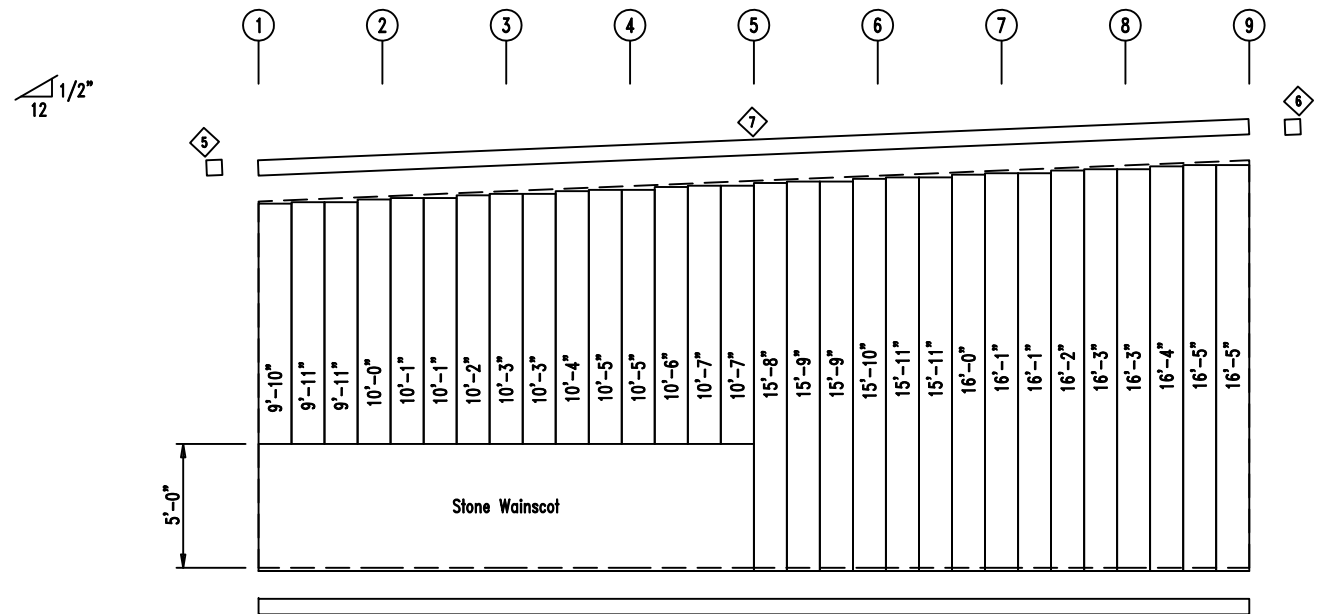
ID	MARK	LENGTH
1	L3x3	20'-0"
2	BC-6	20'-0"
3	BC-6	SCRAP

CONNECTION PLATES

ID	MARK/PART
1	MCLP

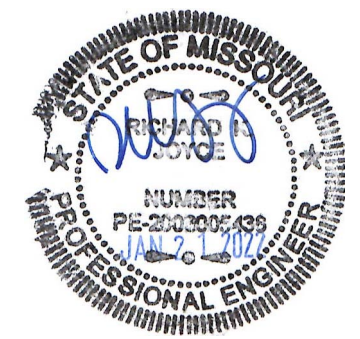


ENDWALL FRAMING FRAME LINE: A



ENDWALL SHEETING & TRIM FRAME LINE: A

PANELS: 20 Ga. CP



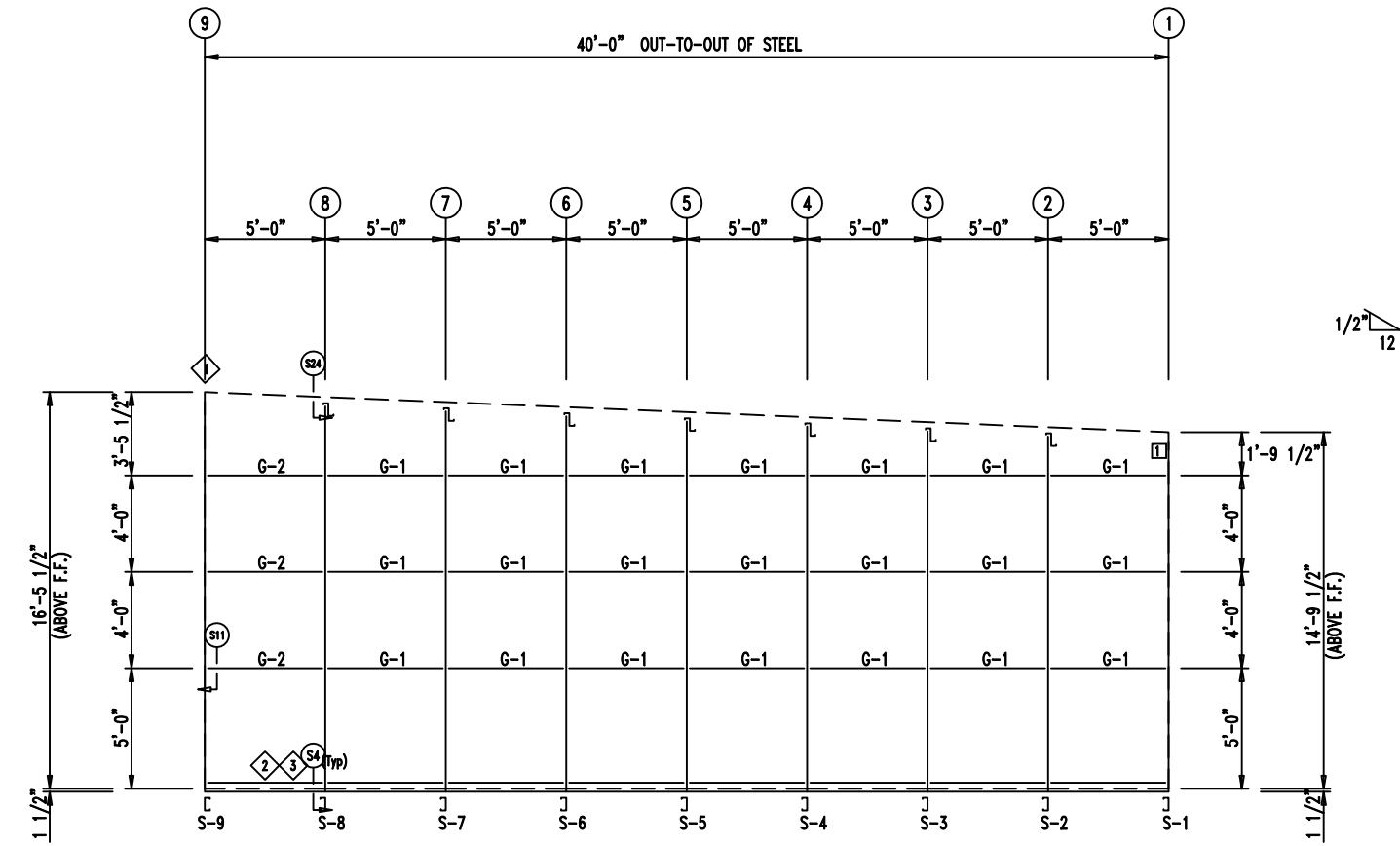
DESCRIPTION:		ENDWALL DRAWING			
CUSTOMER:		Mega Storage		PROJECT: Bldg 4 and 5	
LOCATION:		Lee's Summit, MO			
DRN. BY	CK'D BY	DATE	SCALE	REV.	QUOTATION NO.
JB	DES	1/21/22	N.T.S.	00	--
					SHEET NO.
					5 OF 20

ID	PART	LENGTH	DETAIL
4	FL72	10'-2"	TRIM_74
5	FL16A	6"	
6	FL16A	6"	
7	FL16D	20'-2"	TRIM_229

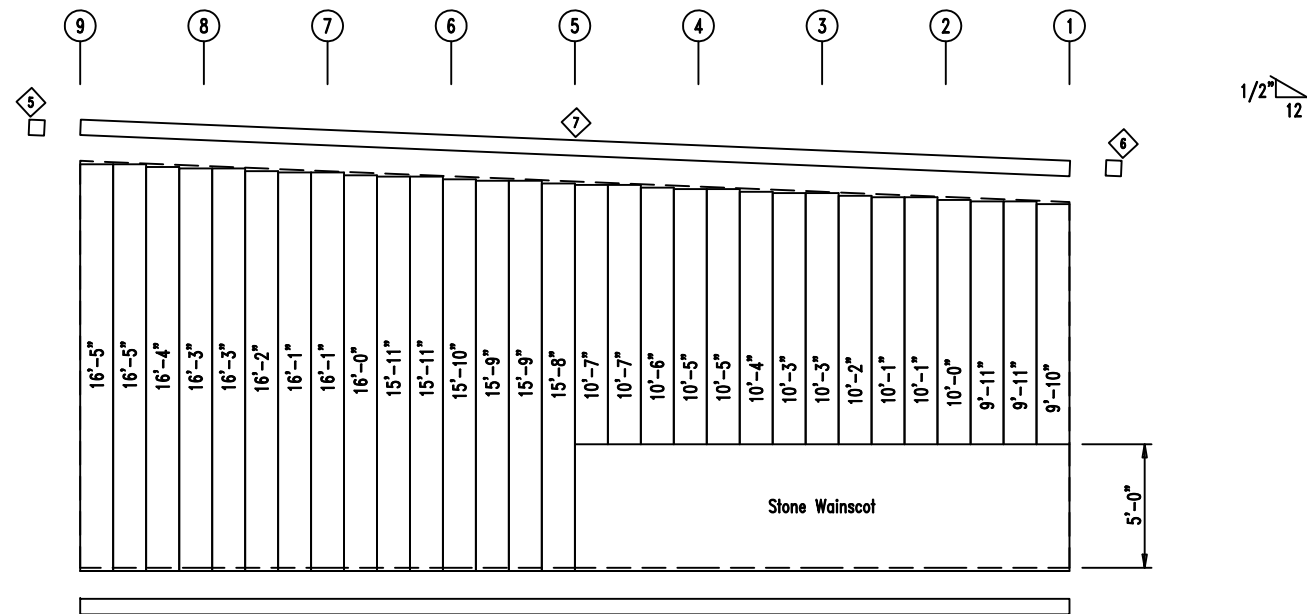
MARK	PART	LENGTH
S-1	6X2C16	14'-9 1/2"
S-2	6X2C16	15'-0"
S-3	6X2C16	15'-2 1/2"
S-4	6X2C16	15'-5"
S-5	6X2C16	15'-7 1/2"
S-6	6X2C16	15'-10"
S-7	6X2C16	16'-0 1/2"
S-8	6X2C16	16'-3"
S-9	6X2C16	16'-7"
G-1	4X25Z16	4'-9 1/2"
G-2	4X25Z16	4'-7 1/2"

ID	MARK	LENGTH
1	L3x3	20'-0"
2	BC-6	20'-0"
3	BC-6	SCRAP

ID	MARK/PART
1	MCLP



ENDWALL FRAMING FRAME LINE: Y



ENDWALL SHEETING & TRIM FRAME LINE: Y

PANELS: 20 Ga. CP

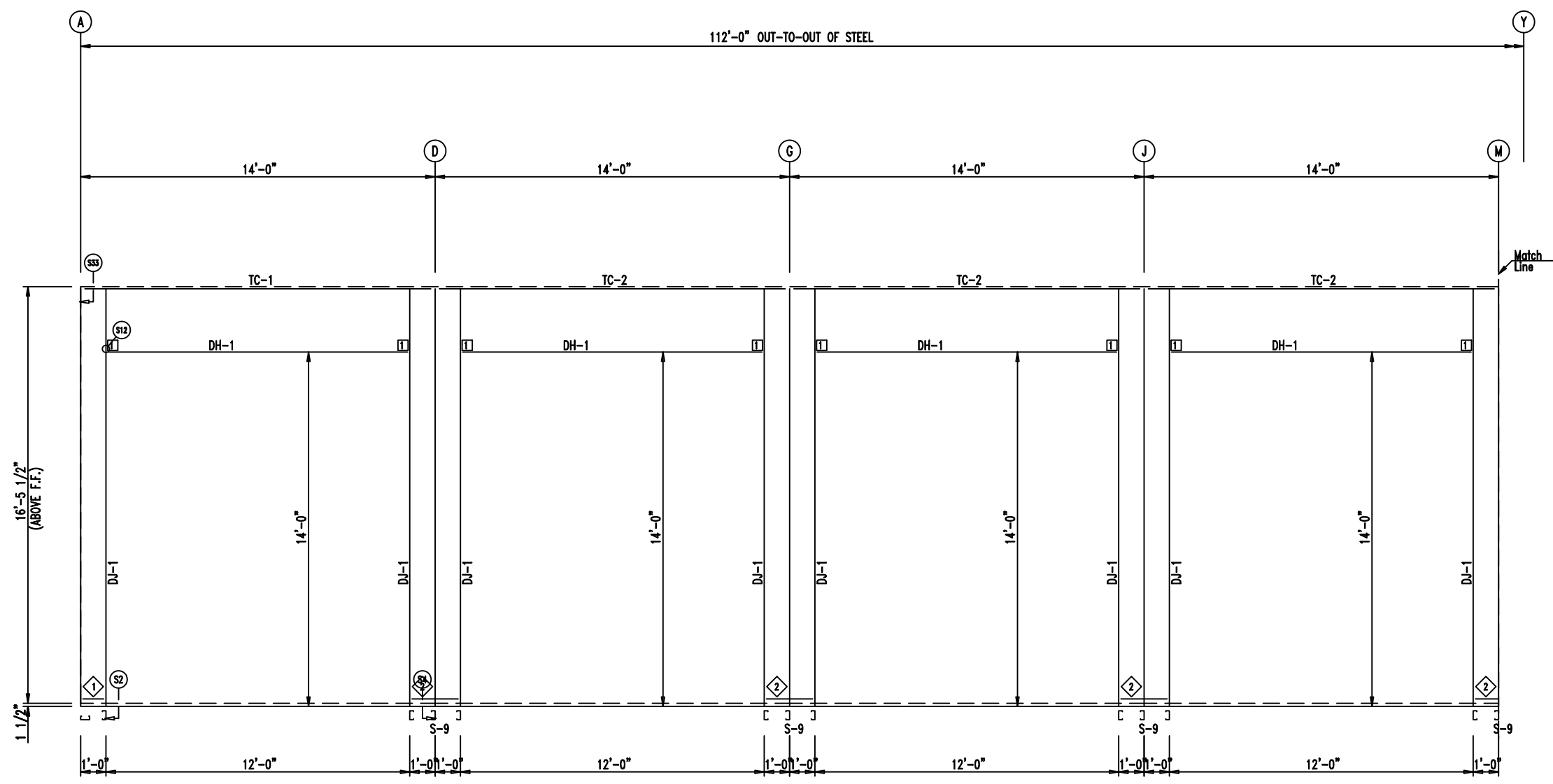


<p>906 West 9th Street Pella, IA 50219 (800) 225-0481 www.pellabuildings.com</p>	DESCRIPTION: ENDWALL DRAWING	
	CUSTOMER: Mega Storage	PROJECT: Bldg 4 and 5
	LOCATION: Lee's Summit, MO	
	DRN. BY: JB	CK'D BY: DES
SCALE: N.T.S.	REV. 00	QUOTATION NO. --
SHEET NO. 6		OF 20

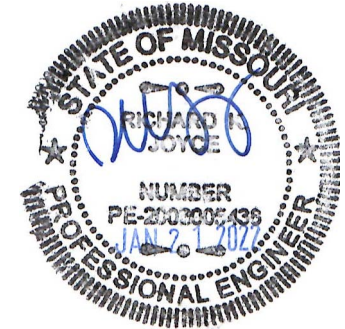
MEMBER TABLE		
MARK	PART	LENGTH
S-9	6X2C16	16'-7"
DJ-1	6X3SC16	16'-7"
TC-1	6X2CH16	15'-11 3/4"
TC-2	6X2CH16	11'-11 1/2"
DH-1	6X25C16	11'-11 1/2"


ANGLE TABLE		
ID	MARK	LENGTH
1	MB612	11 3/4"
2	MB624	1'-11 3/4"

CONNECTION PLATES		
ID	MARK/PART	
1	MCLP	



SIDEWALL FRAMING FRAME LINE: 9

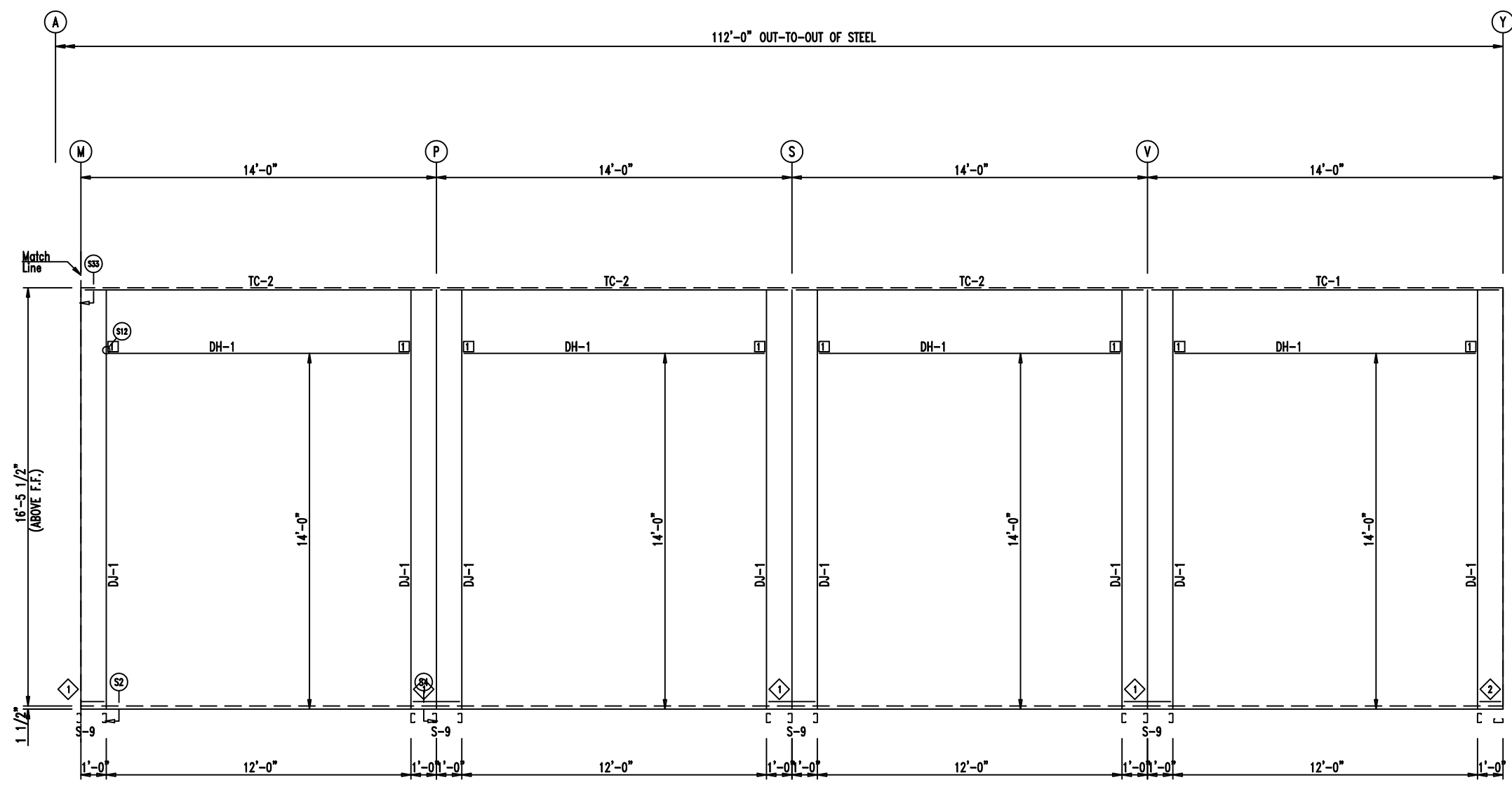


 <p>906 West 9th Street Pella, IA 50219 (800) 225-0481 www.pellabuildings.com</p>	DESCRIPTION: SIDEWALL FRAMING					
	CUSTOMER: Mega Storage	PROJECT: Bldg 4 and 5				
	LOCATION: Lee's Summit, MO					
DRN. BY: JB	CK'D BY: DES	DATE: 1/21/22	SCALE: N.T.S.	REV. 00	QUOTATION NO. --	SHEET NO. 7 OF 20

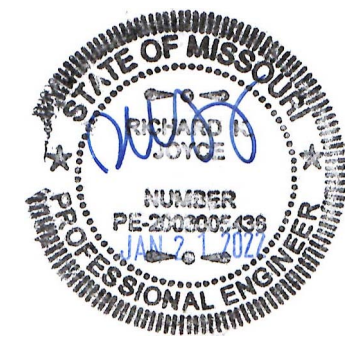
MARK	PART	LENGTH
S-9	6X2C16	16'-7"
DJ-1	6X3SC16	16'-7"
TC-1	6X2CH16	15'-11 3/4"
TC-2	6X2CH16	15'-11 3/4"
DH-1	6X25C16	11'-11 1/2"

ID	MARK	LENGTH
1	MB624	1'-11 3/4"
2	MB612	11 3/4"

ID	MARK/PART
1	MCLP



SIDEWALL FRAMING FRAME LINE: 9

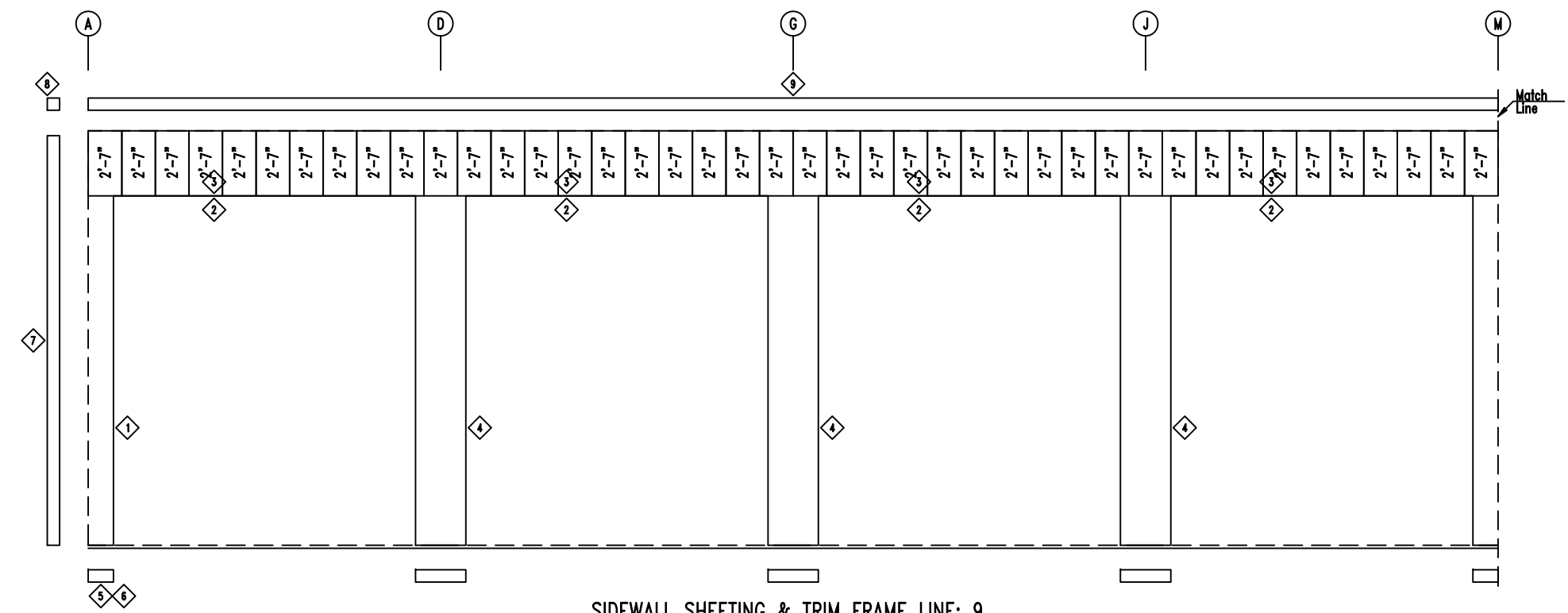


<p>906 West 9th Street Pella, IA 50219 (800) 225-0481 www.pellabuildings.com</p>	DESCRIPTION: SIDEWALL FRAMING	
	CUSTOMER: Mega Storage	PROJECT: Bldg 4 and 5
	LOCATION: Lee's Summit, MO	
	DRN. BY: JB	CK'D BY: DES
SCALE: N.T.S.	REV. 00	QUOTATION NO. --
		SHEET NO. 8 OF 20

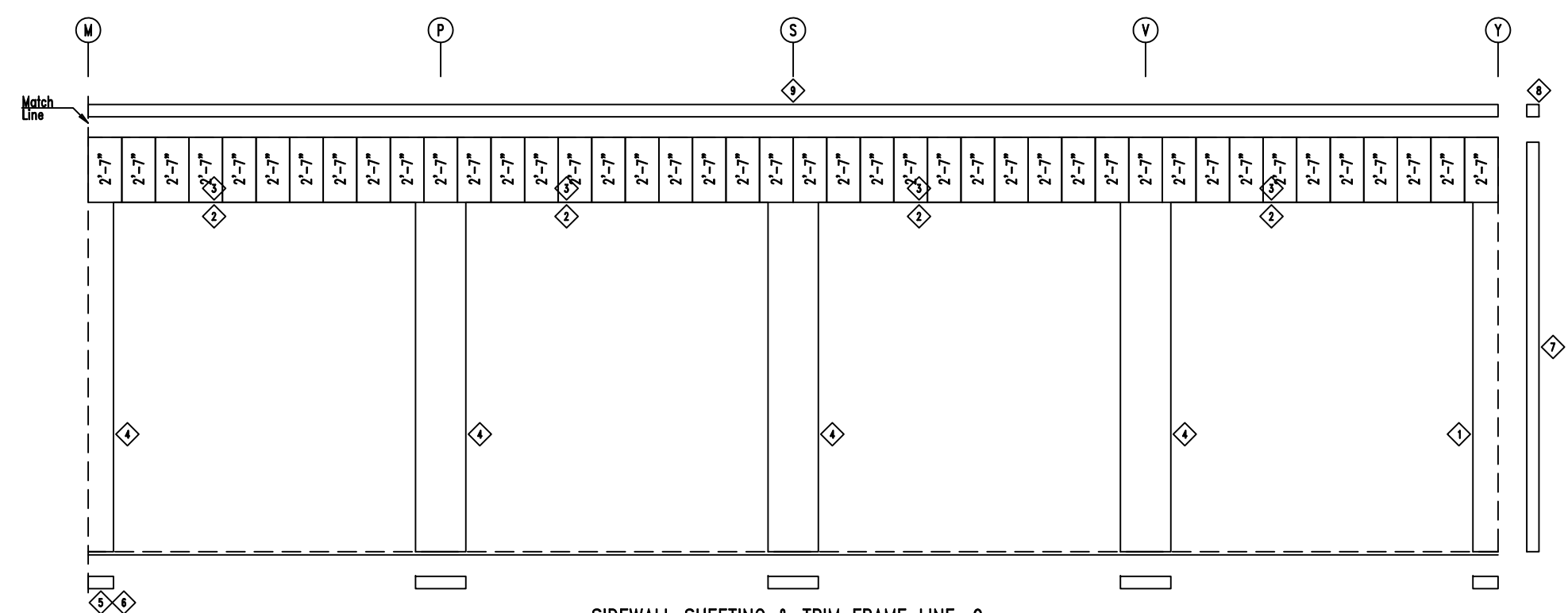


Development Services Department  
Lee's Summit, Missouri  
04/19/2022

TRIM TABLE		LENGTH	DETAIL
◇ ID	PART		
1	6MCE12	14'-1"	TRIM_235
2	FL-HC6	12'-1"	TRIM_235
3	FL26B	20'-2"	TRIM_198
4	6MC24	14'-1"	TRIM_232
5	FL72	10'-2"	TRIM_74
6	FL72	SCRAP	TRIM_74
7	FL835x	16'-7"	TRIM_198
8	FL16C	6"	TRIM_198
9	FL17A	20'-2"	TRIM_322




SIDEWALL SHEETING & TRIM FRAME LINE: 9  
PANELS: 20 Ga. CP - NEED SIG 200



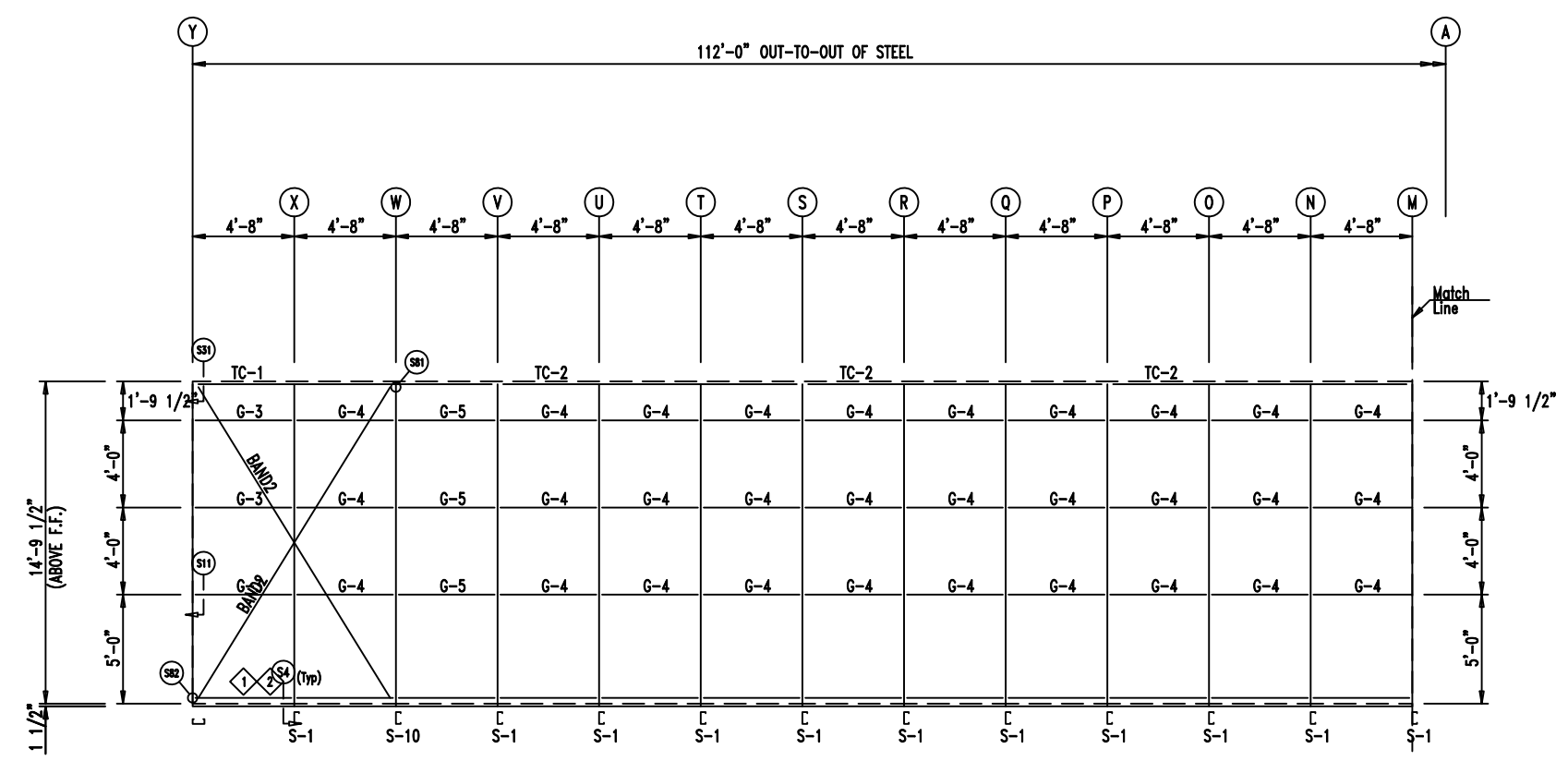
SIDEWALL SHEETING & TRIM FRAME LINE: 9  
PANELS: 20 Ga. CP - NEED SIG 200



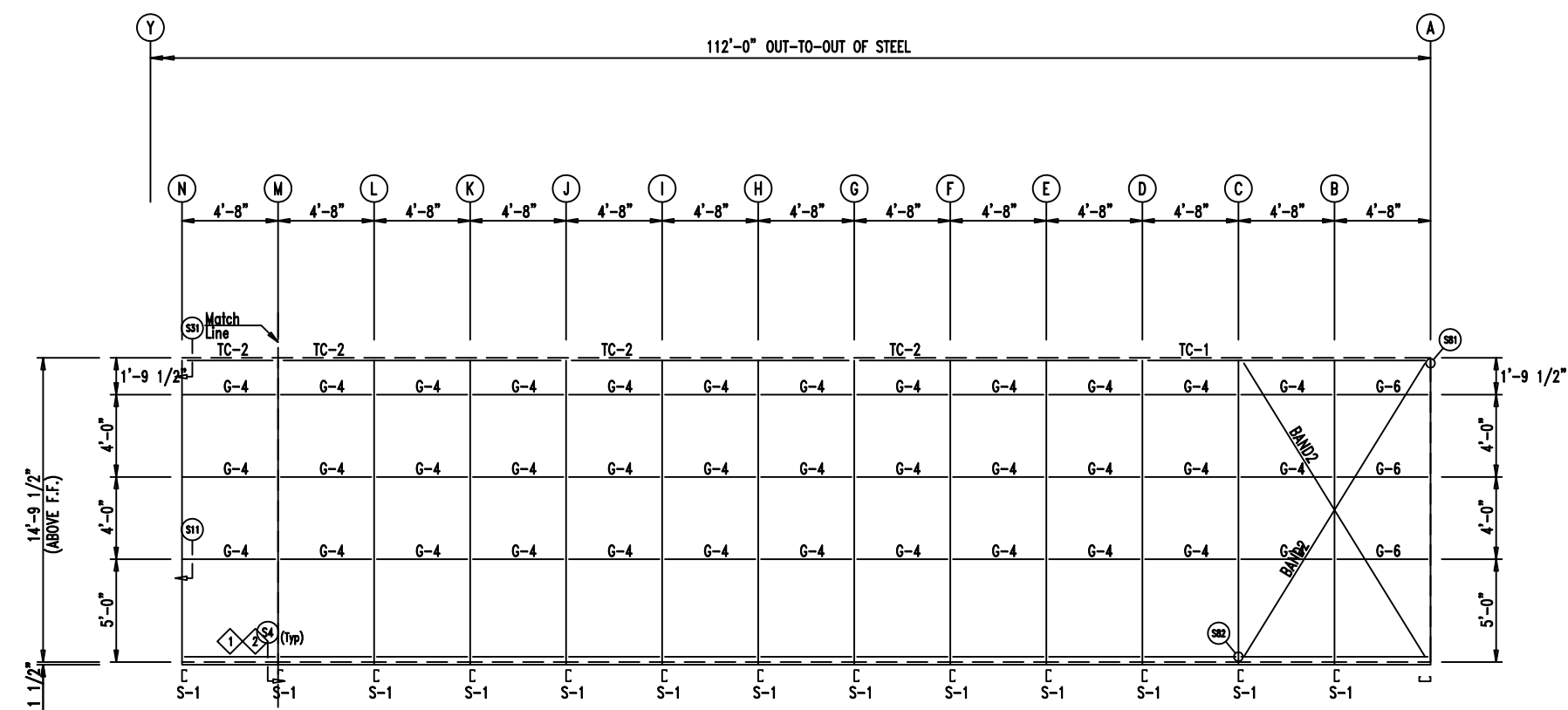
 <p>906 West 9th Street Pella, IA 50219 (800) 225-0481 www.pellabuildings.com</p>	DESCRIPTION: SIDEWALL SHEETING					
	CUSTOMER: Mega Storage	PROJECT: Bldg 4 and 5				
	LOCATION: Lee's Summit, MO					
DRN. BY JB	CK'D BY DES	DATE 1/21/22	SCALE N.T.S.	REV. 00	QUOTATION NO. --	SHEET NO. 9 OF 20

MEMBER TABLE		
MARK	PART	LENGTH
S-1	6X2C16	14'-9 1/2"
S-10	6X2C14	14'-9 1/2"
TC-1	6X2CH16	4'-8"
TC-2	6X2CH16	4'-8"
G-3	4X25Z16	4'-1 3/4"
G-4	4X25Z16	4'-5 1/2"
G-5	4X25Z16	4'-5"
G-6	4X25Z16	3'-11 3/4"

ANGLE TABLE		
ID	MARK	LENGTH
1	BC-6	20'-0"
2	BC-6	SCRAP



SIDEWALL FRAMING FRAME LINE: 1

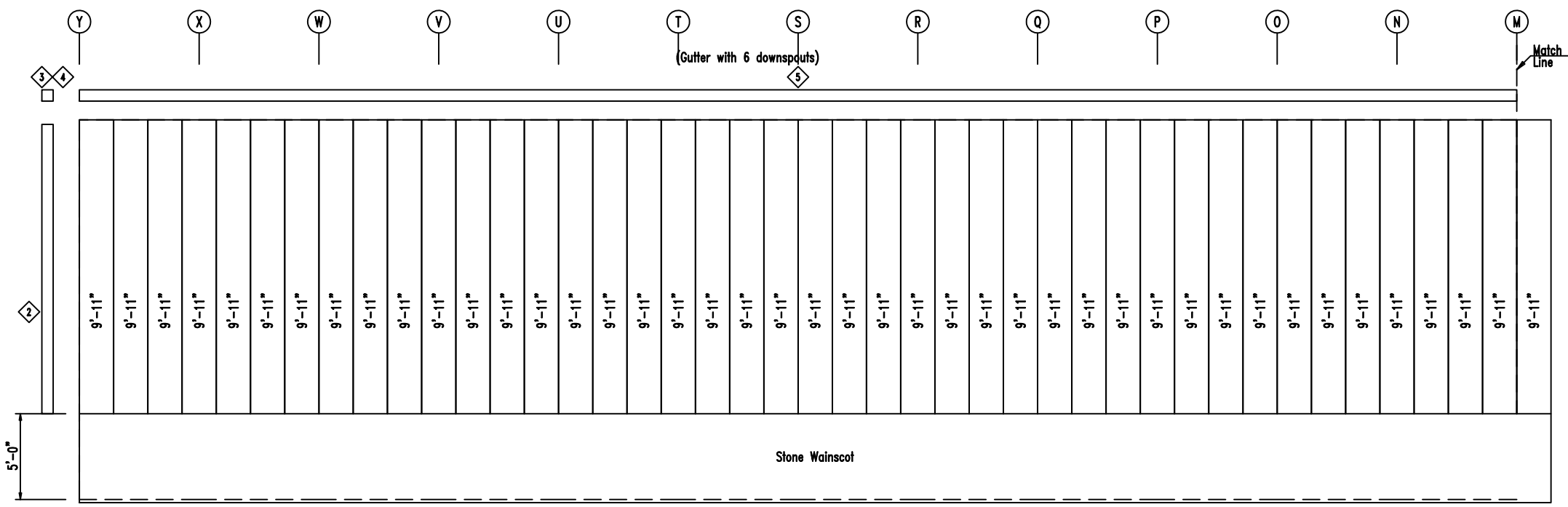


SIDEWALL FRAMING FRAME LINE: 1

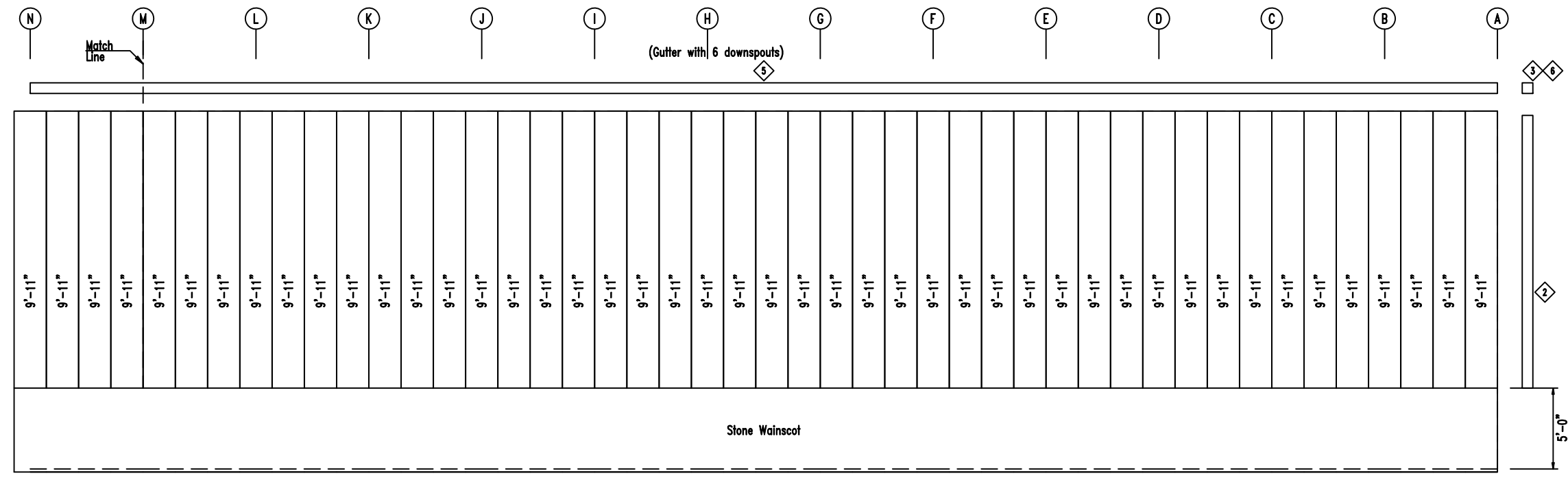


DESCRIPTION: SIDEWALL FRAMING	
CUSTOMER: Mega Storage	PROJECT: Bldg 4 and 5
LOCATION: Lee's Summit, MO	
DRN. BY: JB	CK'D BY: DES
DATE: 1/21/22	SCALE: N.T.S.
REV. 00	QUOTATION NO. --
SHEET NO. 10 OF 20	

TRIM TABLE			
ID	PART	LENGTH	DETAIL
1	FL72	10'-2"	TRIM 74
2	FL835x	14'-11"	TRIM 138
3	FL16C	6"	
4	FL18A	6"	
5	FL18D	20'-2"	
6	FL18A	6"	



SIDEWALL SHEETING & TRIM FRAME LINE: 1  
PANELS: 20 Ga. CP

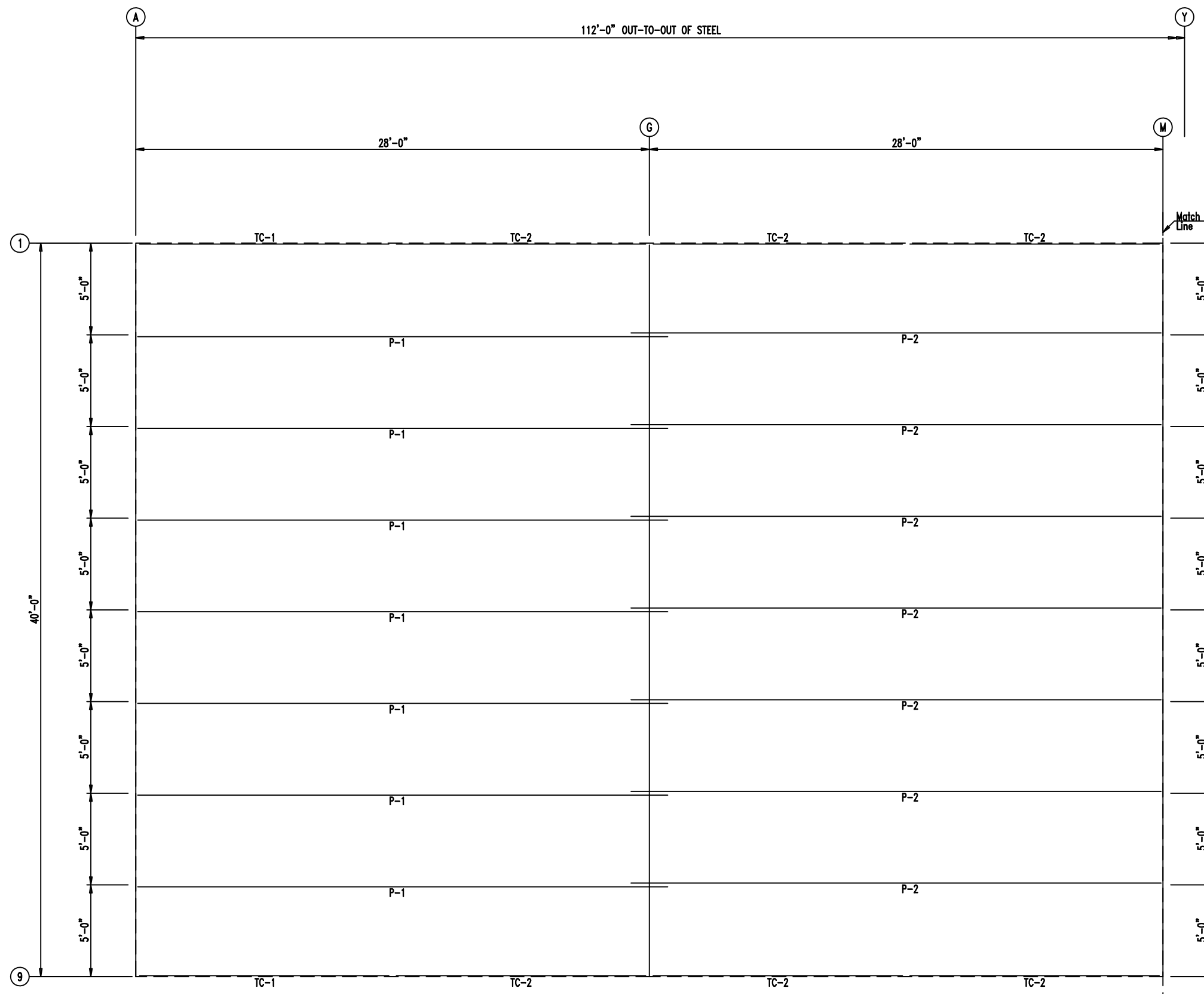


SIDEWALL SHEETING & TRIM FRAME LINE: 1  
PANELS: 20 Ga. CP

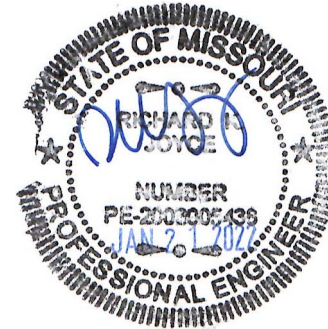


 906 West 9th Street Pella, IA 50219 (800) 225-0481 www.pellabuildings.com	DESCRIPTION: SIDEWALL SHEETING					
	CUSTOMER: Mega Storage	PROJECT: Bldg 4 and 5				
	LOCATION: Lee's Summit, MO					
	DRN. BY: JB	CK'D BY: DES	DATE: 1/21/22	SCALE: N.T.S.	REV.: 00	QUOTATION NO.: --

MEMBER TABLE		
RELEASED FOR CONSTRUCTION		
As Noted on Plans Review		
MARK	PART	LENGTH
TC-1	6K2CH16	13'-11 3/4"
TC-2	6K2CH16	28'-0"
P-1	6K25Z14	29'-0"
P-2	6K25Z16	30'-0"

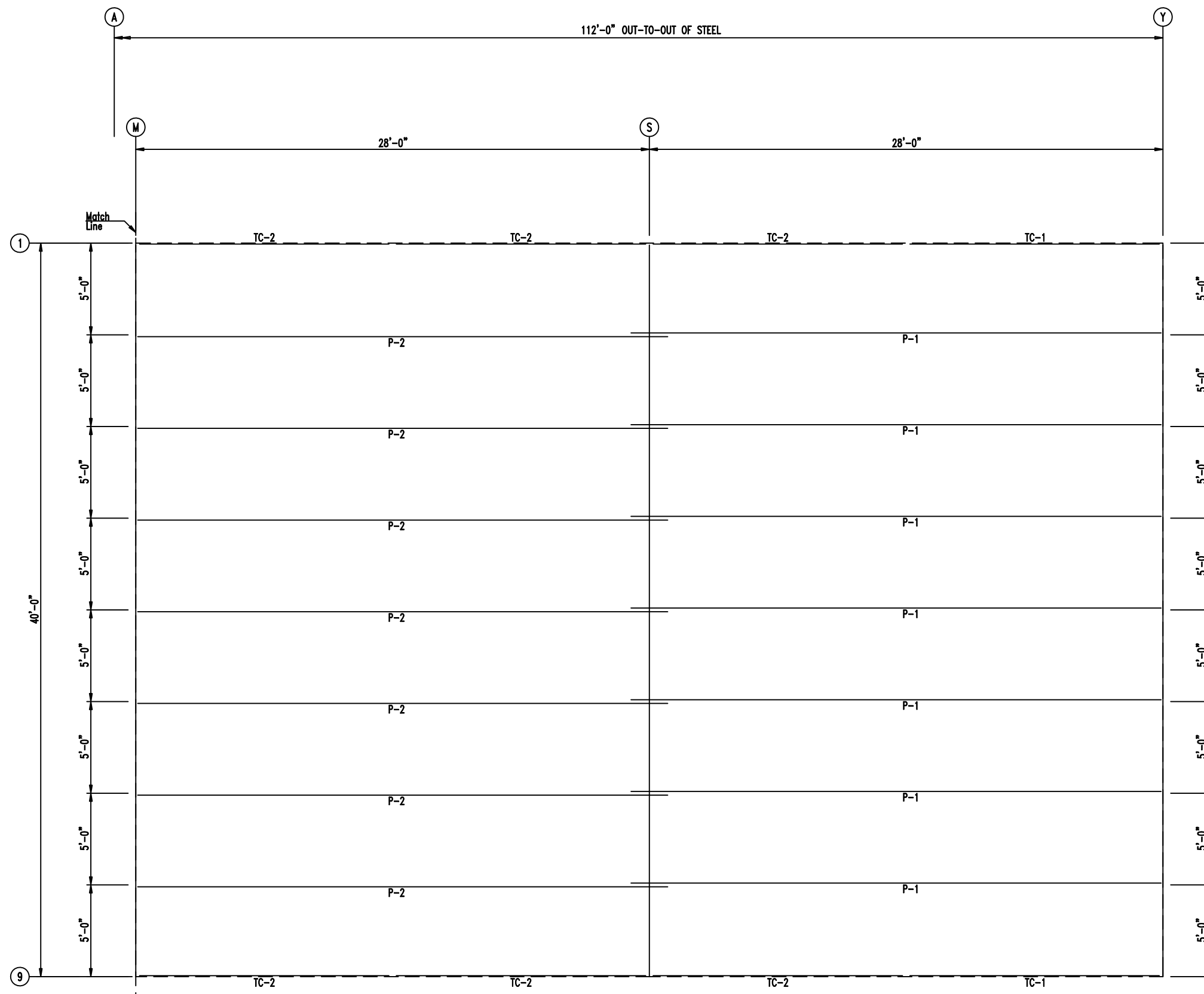


ROOF FRAMING



<p>906 West 9th Street Pella, IA 50219 (800) 225-0481 www.pellabuildings.com</p>	DESCRIPTION: ROOF FRAMING					
	CUSTOMER: Mega Storage	PROJECT: Bldg 4 and 5				
	LOCATION: Lee's Summit, MO					
DRN. BY: JB	CK'D BY: DES	DATE: 1/21/22	SCALE: N.T.S.	REV.: 00	QUOTATION NO.: --	SHEET NO.: 12 OF 20

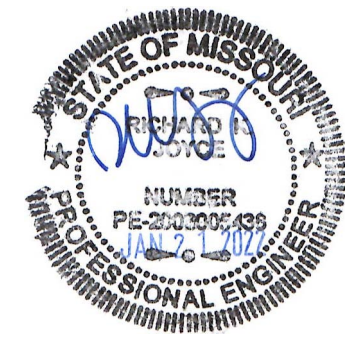
MEMBER TABLE			RELEASED FOR CONSTRUCTION
			As Noted on Plans Review
MARK	PART	LENGTH	
TC-1	6K2CH16	13'-11 3/4"	
TC-2	6K2CH16	28'-0"	
P-1	6K25Z14	28'-0"	
P-2	6K25Z16	30'-0"	




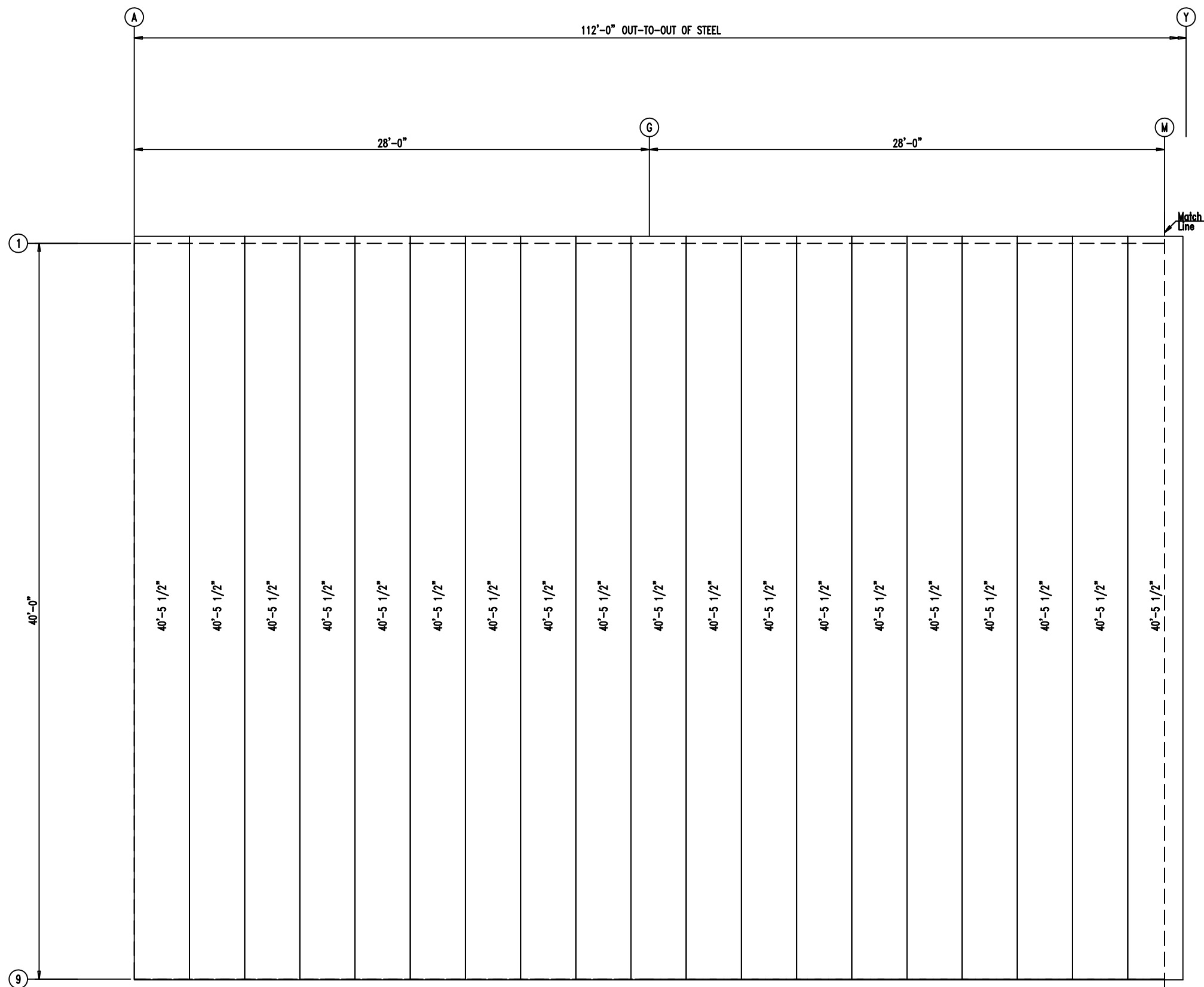
PURLIN LAP

1'-0" / 1'-0"

ROOF FRAMING




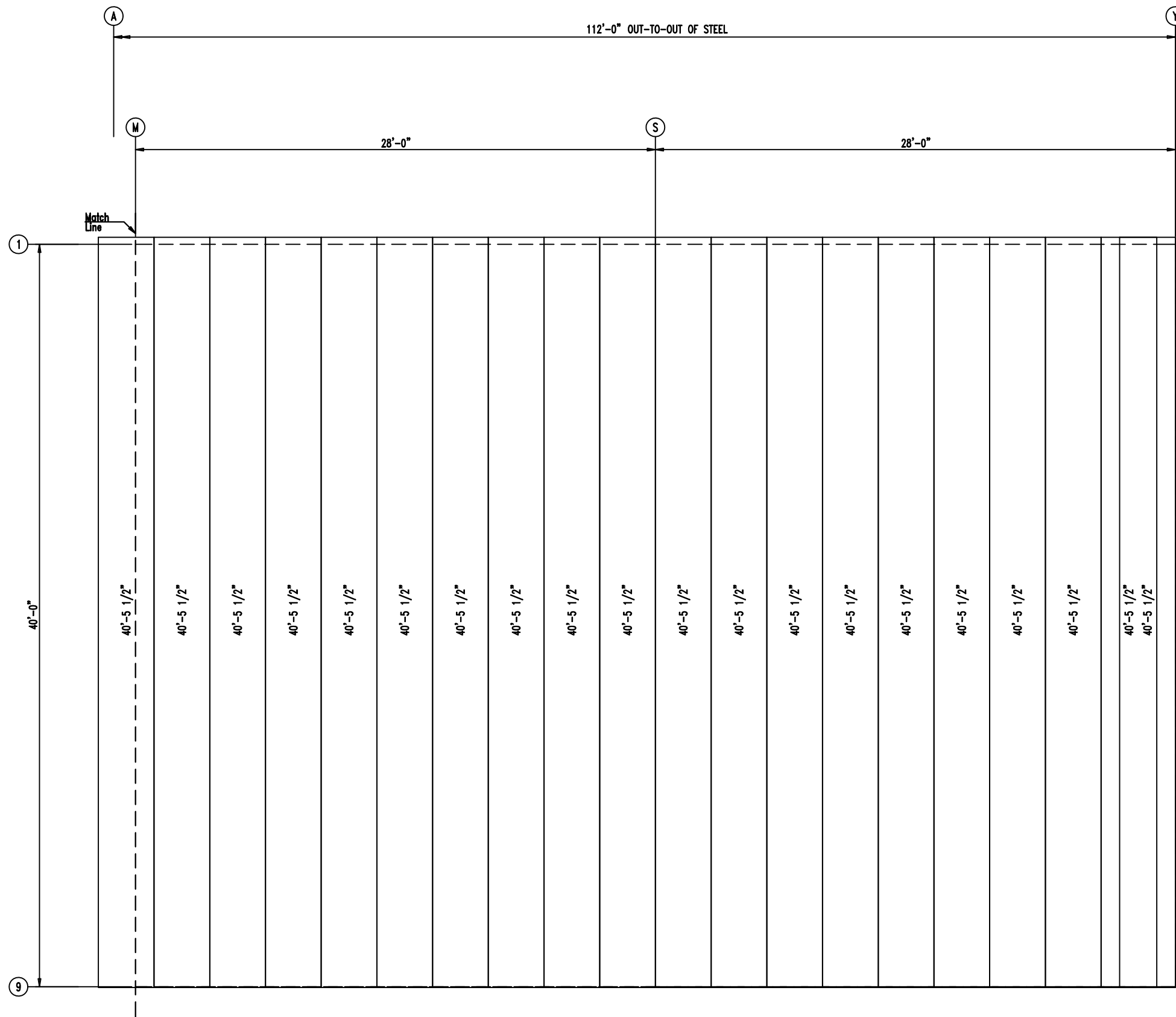
 <p>906 West 9th Street Pella, IA 50219 (800) 225-0481 www.pellabuildings.com</p>	DESCRIPTION: ROOF FRAMING		
	CUSTOMER: Mega Storage	PROJECT: Bldg 4 and 5	
	LOCATION: Lee's Summit, MO		
	DRN. BY: JB	CK'D BY: DES	DATE: 1/21/22
SCALE: N.T.S.	REV. 00	QUOTATION NO. --	SHEET NO. 13 OF 20



**ROOF SHEETING & TRIM**  
 PANELS: 26 Ga. PR - Galvalume+ w/ Drip Stop



 906 West 9th Street Pella, IA 50219 (800) 225-0481 www.pellabuildings.com		DESCRIPTION: ROOF SHEETING						
		CUSTOMER: Mega Storage	PROJECT: Bldg 4 and 5					
LOCATION: LEES SUMMIT MO		DRN. BY: JB	CK'D BY: DES	DATE: 1/21/22	SCALE: N.T.S.	REV.: 00	QUOTATION NO.: --	SHEET NO.: 14 OF 20



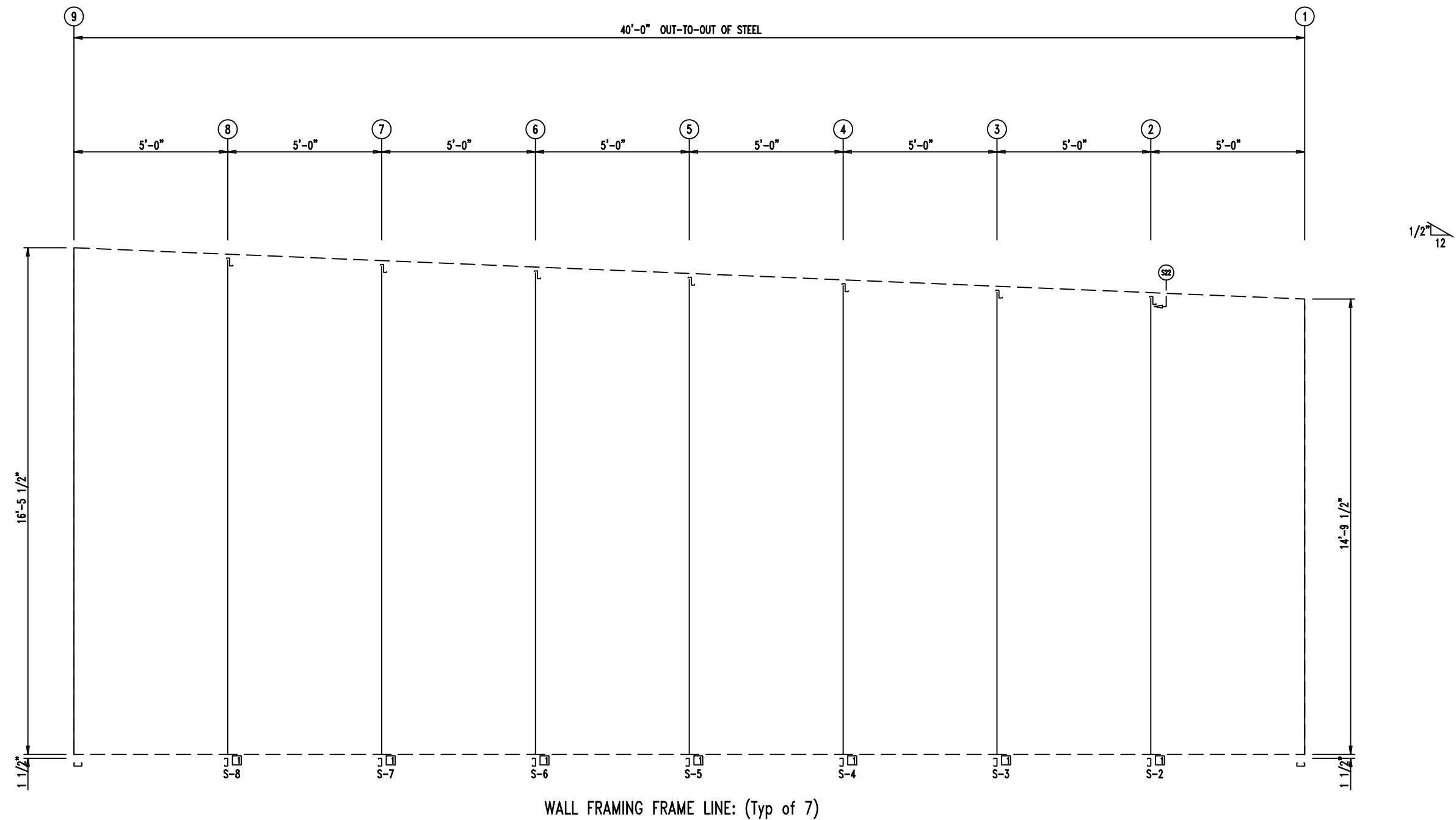
**ROOF SHEETING & TRIM**  
 PANELS: 26 Ga. PR - Galvalume+ w/ Drip Stop



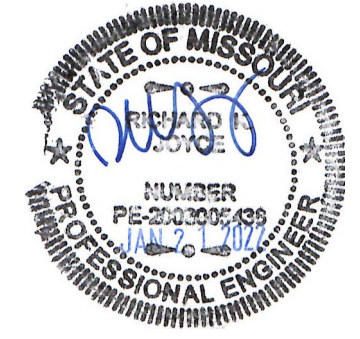
DESCRIPTION: ROOF SHEETING						
CUSTOMER: Mega Storage				PROJECT: Bldg 4 and 5		
LOCATION: LEES SUMMIT MO						
DRN. BY	CK'D BY	DATE	SCALE	REV.	QUOTATION NO.	SHEET NO.
JB	DES	1/21/22	N.T.S.	00	--	15 OF 20

MARK	PART	LENGTH
S-2	6X2C16	15'-0"
S-3	6X2C16	15'-2 1/2"
S-4	6X2C16	15'-3"
S-5	6X2C16	15'-3 1/2"
S-6	6X2C16	15'-10"
S-7	6X2C16	16'-0 1/2"
S-8	6X2C16	16'-3"

ID	MARK/PART
1	FC

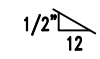
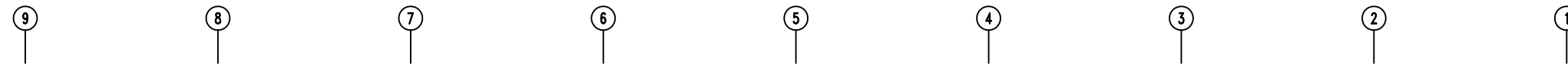


WALL FRAMING FRAME LINE: (Typ of 7)



<p>906 West 9th Street Pella, IA 50219 (800) 225-0481 www.pellabuildings.com</p>	DESCRIPTION: PARTITION FRAMING					
	CUSTOMER: Mega Storage	PROJECT: Bldg 4 and 5				
	LOCATION: Lee's Summit, MO					
DRN. BY: JB	CK'D BY: DES	DATE: 1/21/22	SCALE: N.T.S.	REV.: 00	QUOTATION NO.: --	SHEET NO.: 16 OF 20



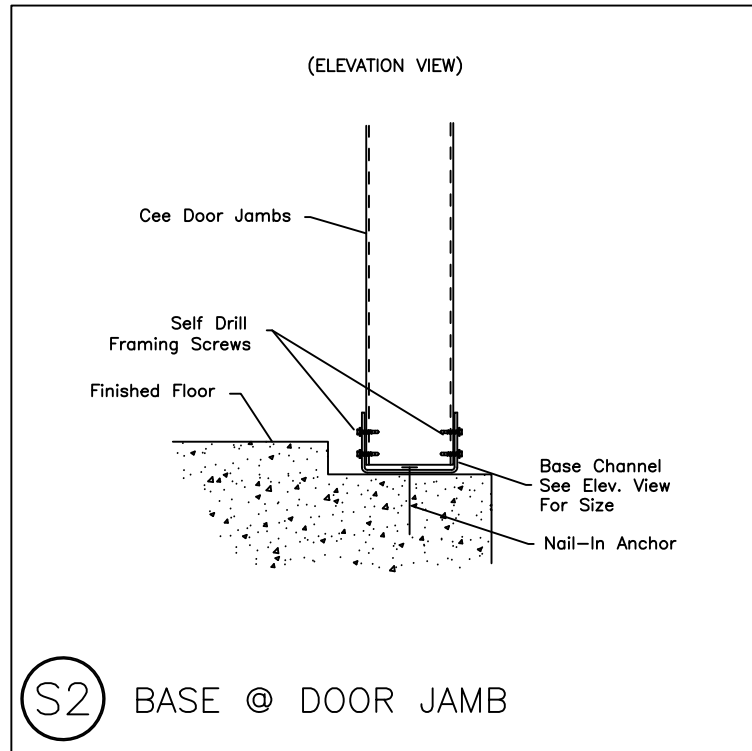


19'-11"	20'-0"
19'-11"	20'-0"
19'-11"	20'-0"
19'-11"	20'-0"
19'-11"	20'-0"

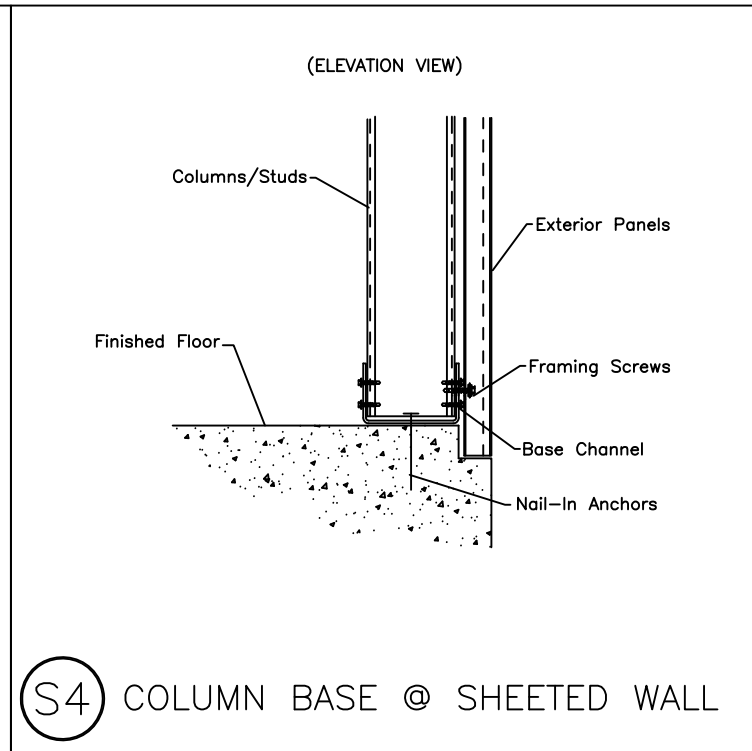
WALL SHEETING & TRIM FRAME LINE: (Typ of 7)  
 PANELS: 29 Ga. PR - Galvalume +



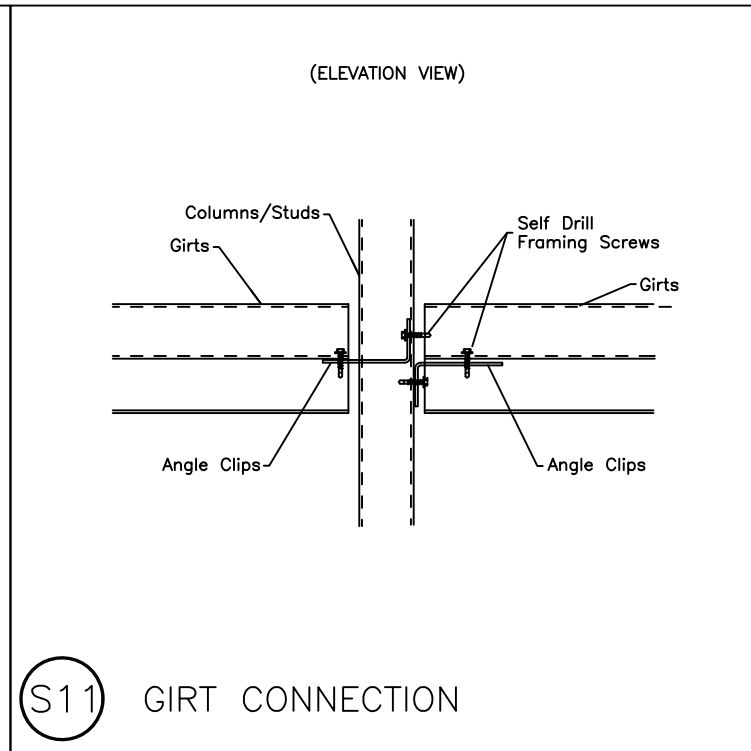
<p>PELLA BUILDING SYSTEMS 906 West 9th Street Pella, IA 50219 (800) 225-0481 www.pellabuildings.com</p>	DESCRIPTION: PARTITION SHEETING						
	CUSTOMER: Mega Storage				PROJECT: Bldg 4 and 5		
	LOCATION: Lee's Summit, MO						
	DRN. BY JB	CK'D BY DES	DATE 1/21/22	SCALE N.T.S.	REV. 00	QUOTATION NO. ---	SHEET NO. 17 OF 20



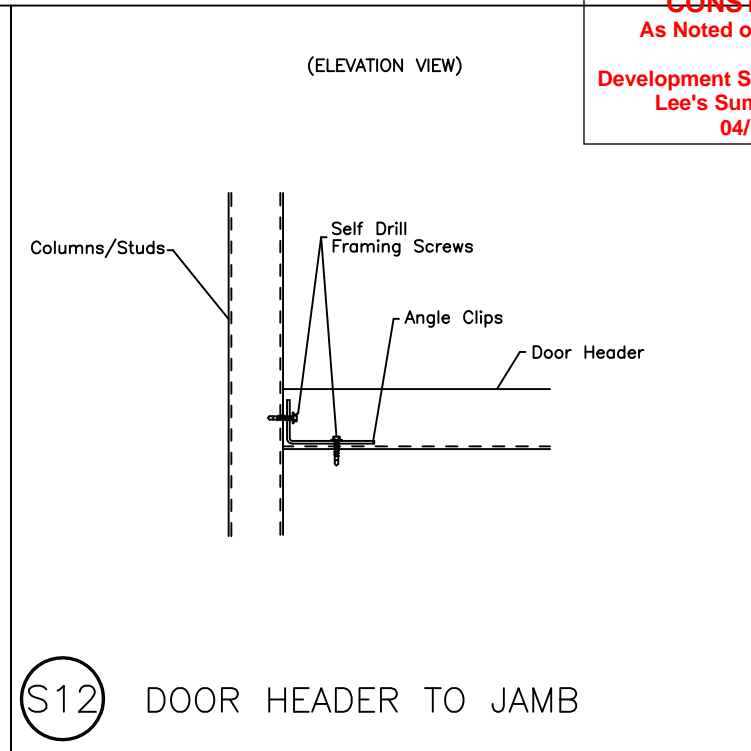
S2 BASE @ DOOR JAMB



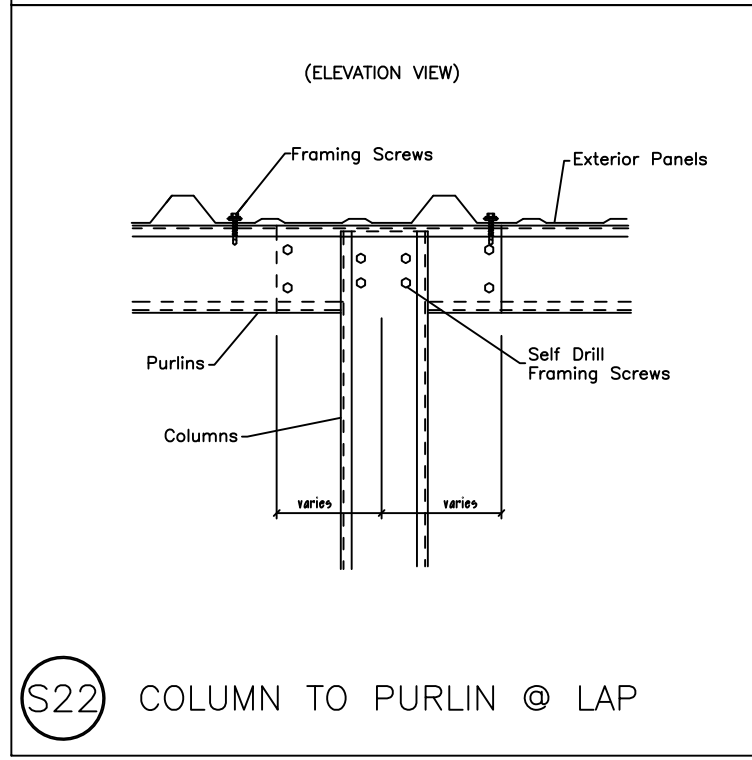
S4 COLUMN BASE @ SHEETED WALL



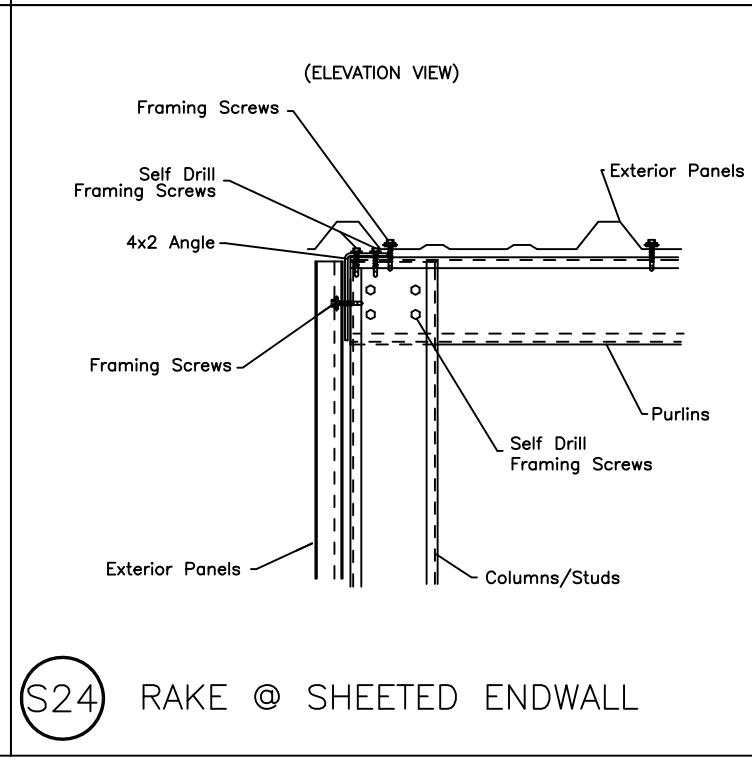
S11 GIRT CONNECTION



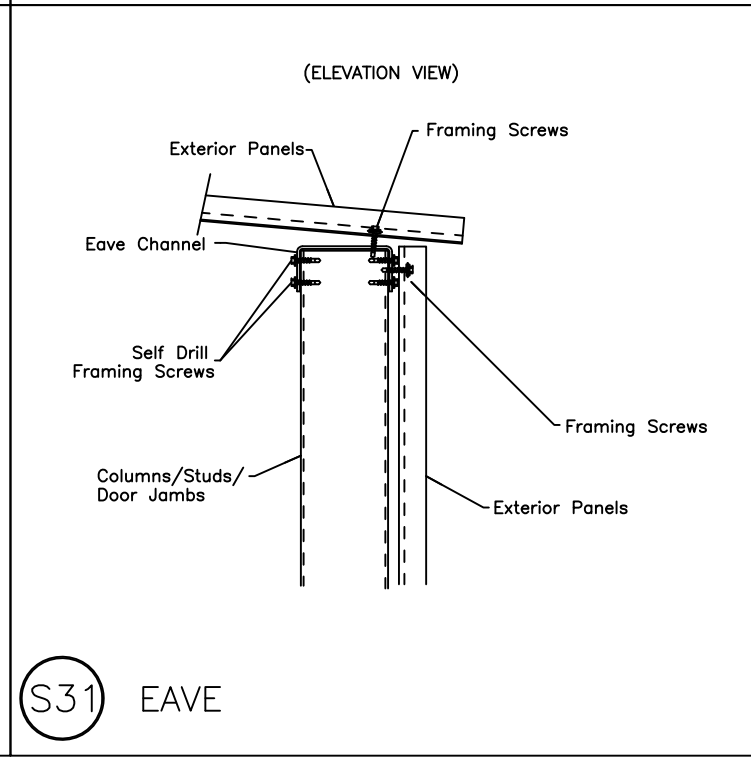
S12 DOOR HEADER TO JAMB



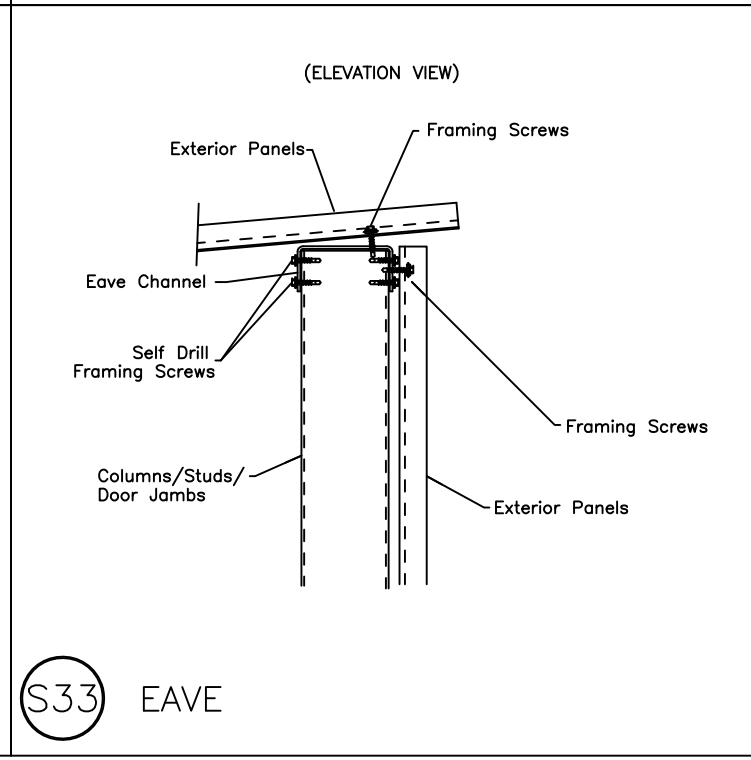
S22 COLUMN TO PURLIN @ LAP



S24 RAKE @ SHEETED ENDWALL



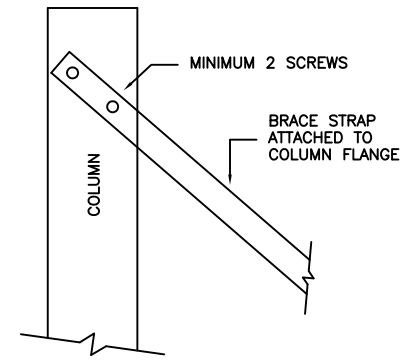
S31 EAVE



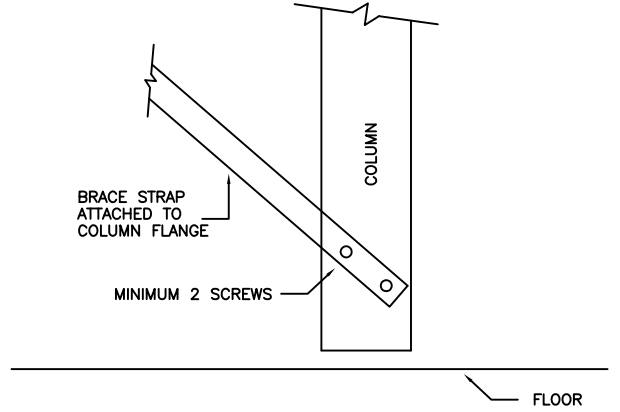
S33 EAVE



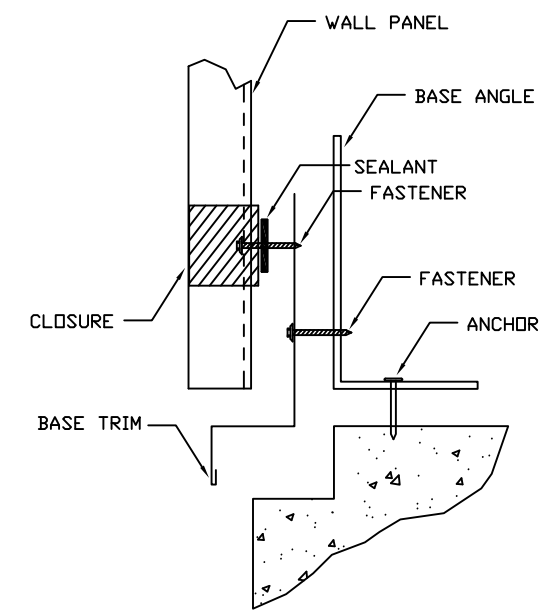
DESCRIPTION: DETAIL DRAWINGS					
CUSTOMER: Mega Storage			PROJECT: Bldg 4 and 5		
LOCATION: Lee's Storage, MO					
DRN. BY	CK'D BY	DATE	SCALE	REV.	QUOTATION NO.
JB	DES	1/21/22	N.T.S.	00	--
					SHEET NO.
					18 OF 20



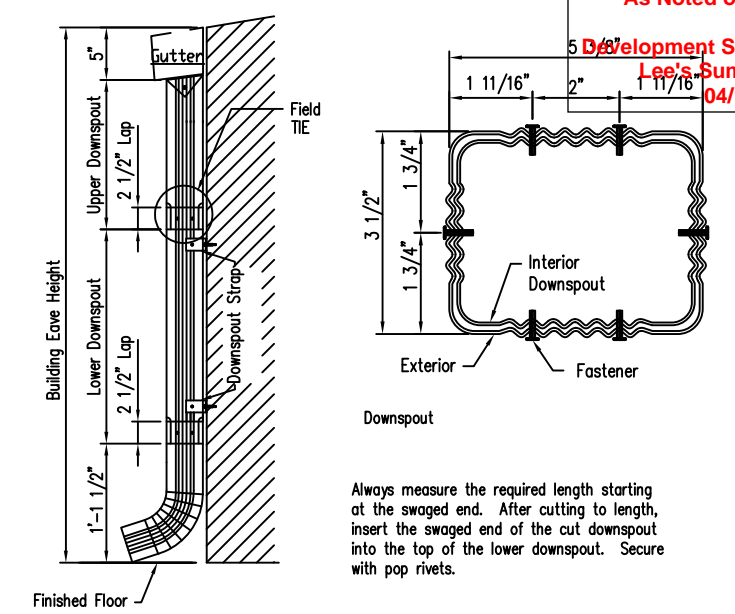
S81 BRACE STRAP TO COLUMN TOP



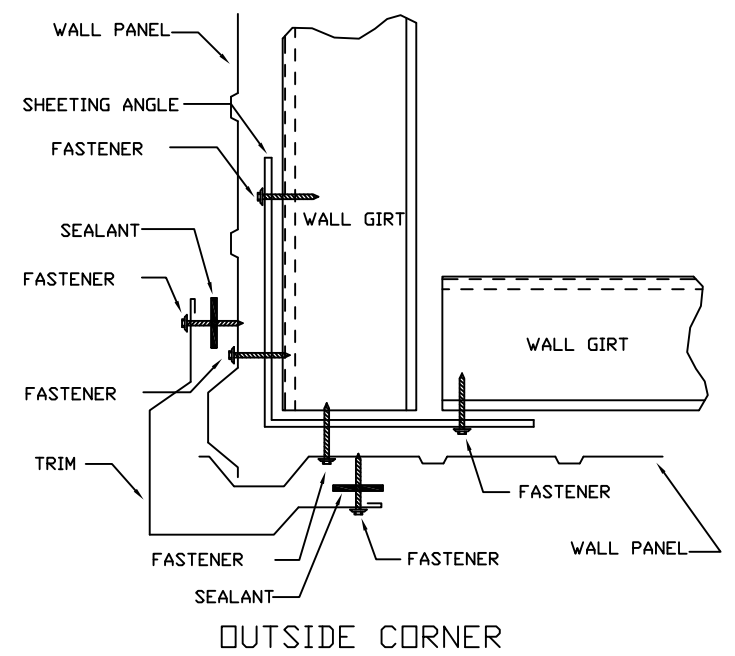
S82 BRACE STRAP TO COLUMN BOTTOM



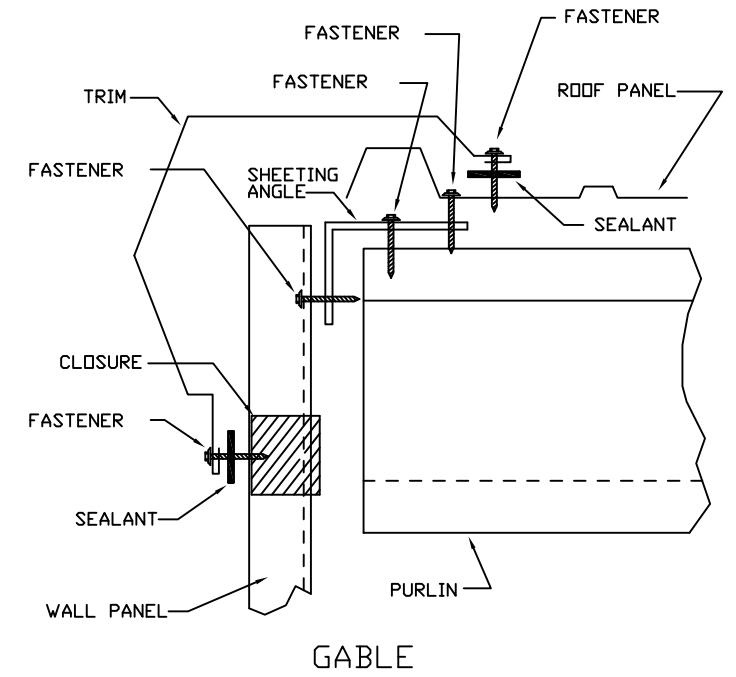
TRIM\_74 BASE SEAL



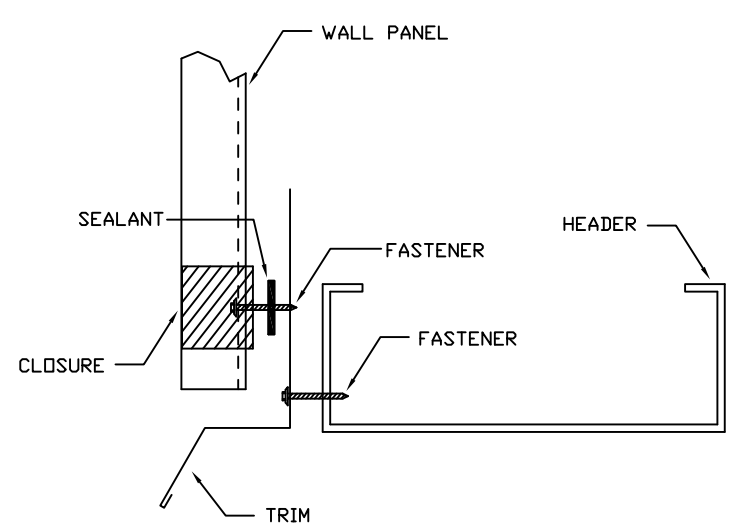
TRIM\_175 3 1/2" x 5 3/8" Roll Form Downspout Elevation  
DRAWING NO. 1. A Downspout Strap is required at all Downspout Splices.



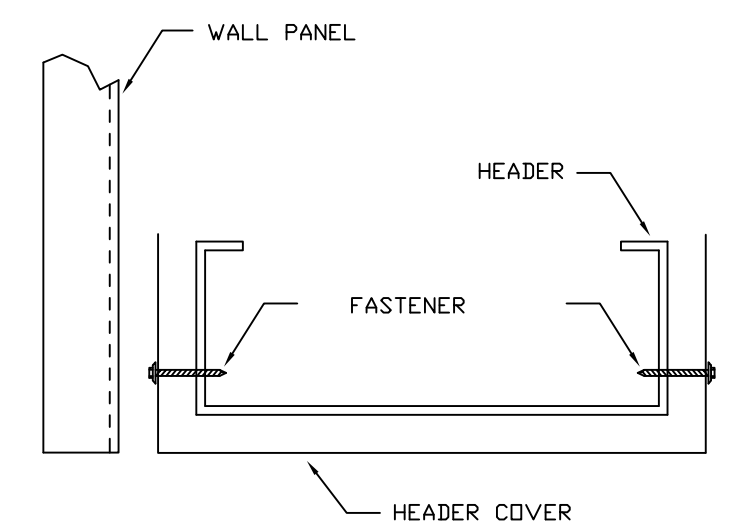
TRIM\_198 OUTSIDE CORNER



TRIM\_229 GABLE



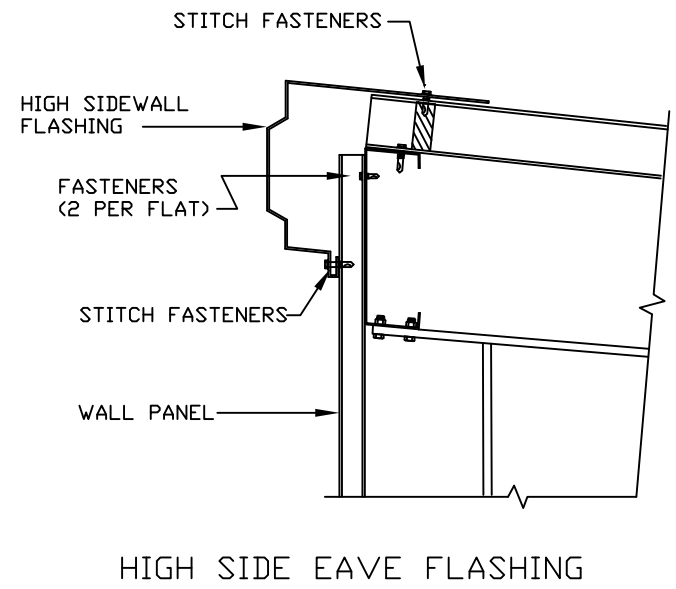
TRIM\_232 HEADER



TRIM\_235 HEADER COVER



DESCRIPTION:		DETAIL DRAWINGS			
CUSTOMER:		Mega Storage		PROJECT: Bldg 4 and 5	
LOCATION:		Lee's Summit, MO			
DRN. BY	CK'D BY	DATE	SCALE	REV.	QUOTATION NO.
JB	DES	1/21/22	N.T.S.	00	--
					SHEET NO.
					19 OF 20



TRIM\_322



DESCRIPTION: DETAIL DRAWINGS						
CUSTOMER: Mega Storage				PROJECT: Bldg 4 and 5		
LOCATION: Lee's Summit, MO						
DRN. BY	CK'D BY	DATE	SCALE	REV.	QUOTATION NO.	SHEET NO.
JB	DES	1/21/22	N.T.S.	00	--	20 OF 20