

PELLA

BUILDING SYSTEMS

906 West 9th Street Pella, IA 50219
(800) 225-0481 www.pellabuildings.com

BUILDING LOADS / DESCRIPTION:

WIDTH: 50 LENGTH: 100 HEIGHT: 14.79 / 16.88
(BUILDING DIMENSIONS ARE NOMINAL. REFER TO PLANS).

THIS STRUCTURE IS DESIGNED UTILIZING THE LOADS INDICATED AND APPLIED AS REQUIRED BY : IBC 18

THE CONTRACTOR IS TO CONFIRM THAT THESE LOADS COMPLY WITH THE REQUIREMENTS OF THE LOCAL BUILDING DEPARTMENT.

ROOF DEAD LOAD: 2.000 PSF (ROOF PANELS & PURLINS)

COLLATERAL LOAD: 0.5 PSF

ROOF LIVE LOAD: 20.00 PSF

ROOF SNOW LOAD: 16.8 PSF

GROUND SNOW LOAD: 20.00 PSF

SNOW EXPOSURE: 1.0

THERMAL FACTOR: 1.2

BASIC WIND SPEED: 110 MPH

WIND EXPOSURE: C

INTERNAL PRESSURE COEFF.:

0.18 / 0.18

IMPORTANCE FACTORS:

WIND LOAD 1.0

SNOW LOAD 1.0

SEISMIC LOAD 1.0

SITE CLASS: D

SEISMIC ZONE: B

SEISMIC DESIGN CATEGORY: B

SPECTRAL RESPONSE COEFF.

Sds 0.107

Sd1 0.109

MAPPED SPECTRAL RESPONSE ACC.

Ss 0.100

S1 0.068

ROOF PANELS:

COLOR: Galvalume

WALL PANELS:

COLOR: TBD

TRIM COLORS:

CABLE: TBD

CORNER: TBD

EAVE: TBD

FRAMED OPENINGS: TBD

LINER PANELS:

COLOR: Galvalume

LINER TRIM:

COLOR: Galvalume

DEFLECTION LIMITS:

EW COL: 180
EW RAF LIVE: 180
EW RAF WIND: 180
WALL GIRT: 90
PURL LIVE: 180
PURL WIND: 150
WALL PANEL: 60
ROOF PANEL LIVE: 60
ROOF PANEL WIND: 60
RF HORIZONTAL: 180
RF VERTICAL: 60
WIND BENT: 60

BUILDER / CONTRACTOR RESPONSIBILITIES

IT IS THE RESPONSIBILITY OF THE BUILDER/CONTRACTOR TO INSURE THAT ALL PERMITS, PLANS AND SPECIFICATIONS COMPLY WITH THE APPLICABLE REQUIREMENTS OF THE GOVERNING BUILDING AUTHORITIES. THE SUPPLYING OF SEALED ENGINEERING DATA AND DRAWINGS FOR THE METAL BUILDING SYSTEM DOES NOT IMPLY OR CONSTITUTE AN AGREEMENT THAT THE METAL BUILDING SYSTEM MANUFACTURER OR ITS DESIGN ENGINEER IS ACTING AS THE ENGINEER OF RECORD OR DESIGN PROFESSIONAL FOR A CONSTRUCTION PROJECT.

THE CONTRACTOR MUST SECURE ALL REQUIRED APPROVALS AND PERMITS FROM THE APPROPRIATE AGENCY AS REQUIRED. APPROVAL OF THE METAL BUILDING SYSTEM MANUFACTURER'S DRAWINGS AND CALCULATIONS INDICATE THAT THE METAL BUILDING SYSTEM MANUFACTURER CORRECTLY INTERPRETED AND APPLIED THE REQUIREMENTS OF THE CONTRACT DRAWINGS AND SPECIFICATIONS. (SECT. 4.2.1 AISC CODE OF STANDARD PRACTICES, 9TH ED.) WHERE DISCREPANCIES EXIST BETWEEN THE METAL BUILDING SYSTEM MANUFACTURER'S STRUCTURAL STEEL PLANS AND THE PLANS FOR OTHER TRADES, THE STRUCTURAL STEEL PLANS SHALL GOVERN. (SECT. 3.3 AISC CODE OF STANDARD PRACTICE 9TH ED.)

DESIGN CONSIDERATIONS OF ANY MATERIALS IN THE STRUCTURE WHICH ARE NOT FURNISHED BY THE METAL BUILDING SYSTEM MANUFACTURER ARE THE RESPONSIBILITY OF THE CONTRACTORS AND ENGINEERS OTHER THAN THE METAL BUILDING SYSTEM MANUFACTURER'S ENGINEER UNLESS SPECIFICALLY INDICATED.

THE CONTRACTOR IS RESPONSIBLE FOR ALL ERECTION OF STEEL AND ASSOCIATED WORK IN COMPLIANCE WITH THE METAL BUILDING SYSTEM MANUFACTURER "FOR CONSTRUCTION" DRAWINGS.

ALL BRACING AS SHOWN AND PROVIDED BY THE METAL BUILDING SYSTEM MANUFACTURER FOR THIS BUILDING IS REQUIRED AND SHALL BE INSTALLED BY THE ERECTOR AS A PERMANENT PART OF THE STRUCTURE.

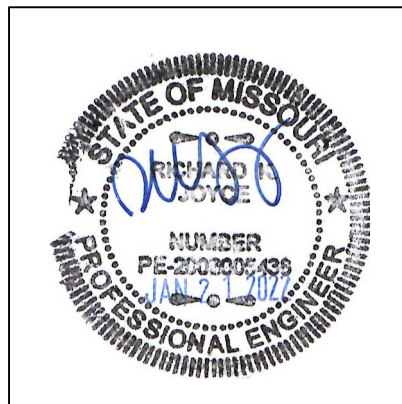
TEMPORARY SUPPORTS, SUCH AS TEMPORARY GUYS, BRACES, FALSE WORK, CRIBBING OR OTHER ELEMENTS REQUIRED FOR THE ERECTION OPERATION WILL BE DETERMINED AND FURNISHED AND INSTALLED BY THE ERECTOR. THESE TEMPORARY SUPPORTS WILL SECURE THE STEEL FRAMING, OR ANY PARTLY ASSEMBLED STEEL FRAMING, AGAINST LOADS COMPARABLE IN INTENSITY TO THOSE FOR WHICH THE STRUCTURE WAS DESIGNED, RESULTING FROM WIND, SEISMIC FORCES AND ERECTION OPERATIONS, BUT NOT THE LOADS RESULTING FROM THE PERFORMANCE OF WORK BY OR THE ACTS OF OTHERS, NOR SUCH UNPREDICTABLE LOADS AS THOSE DUE TO TORNADO, EXPLOSION, OR COLLISION. (SECT. 7.9.1 AISC CODE OF STANDARD PRACTICE, 9TH ED.)

WARNING: IN NO CASE SHOULD GALVALUME STEEL PANELS BE USED IN CONJUNCTION WITH LEAD OR COPPER. BOTH LEAD AND COPPER HAVE HARMFUL CORROSION EFFECTS ON THE ALUMINUM ZINC ALLOY COATING WHEN THEY ARE USED IN CONTACT WITH GALVALUME STEEL PANELS. EVEN RUN-OFF FROM COPPER FLASHING, WIRING, OR TUBING ONTO GALVALUME SHOULD BE AVOIDED.

APPROVAL NOTES

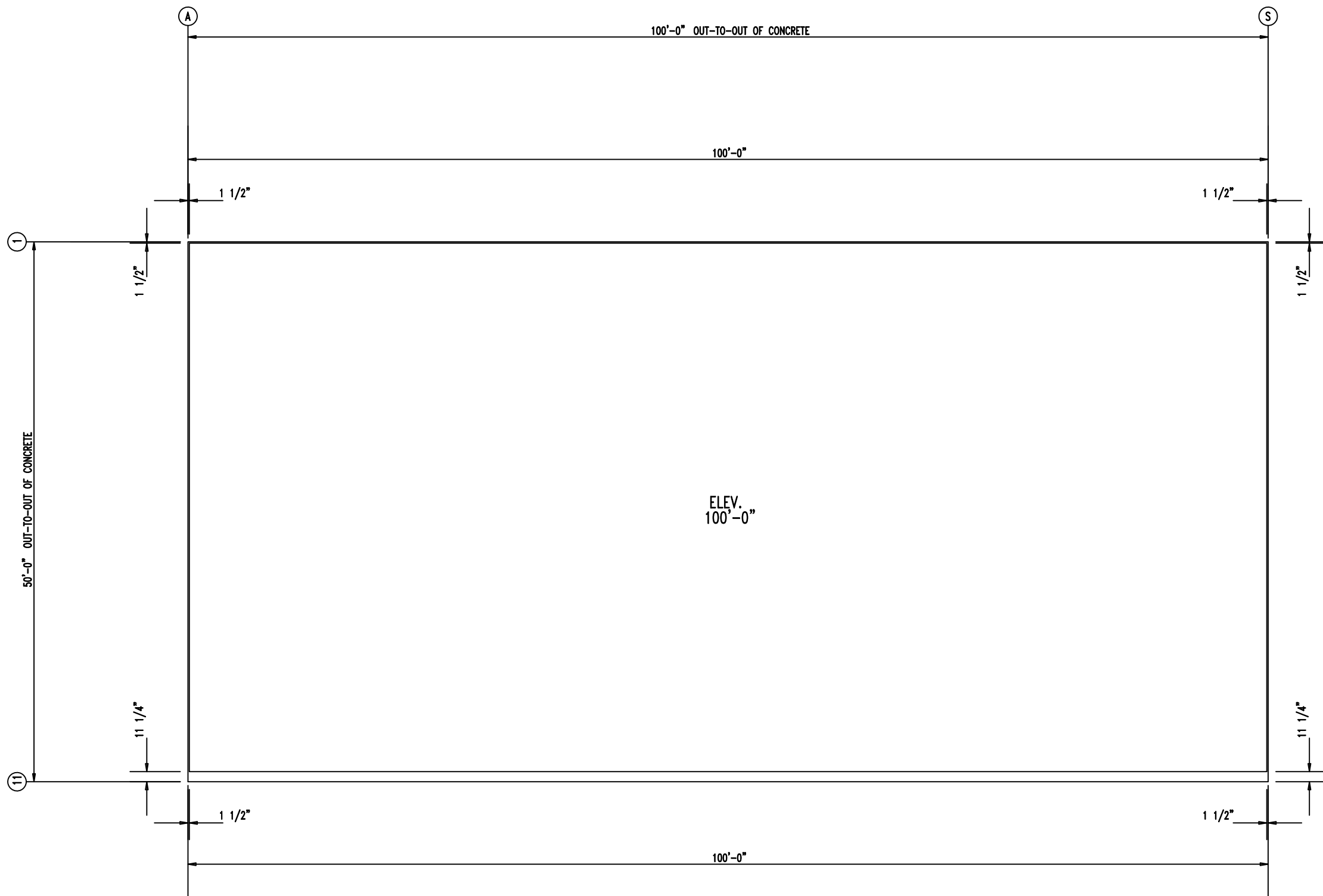
THE FOLLOWING CONDITIONS APPLY IN THE EVENT THAT THESE DRAWINGS ARE USED AS APPROVAL DRAWINGS: IT IS IMPERATIVE THAT ANY CHANGES TO THESE DRAWINGS BE MADE IN CONTRASTING INK (PREFERABLY RED INK), HAVE ALL INSTANCES OF CHANGE CLEARLY INDICATED, AND BE LEGIBLE AND UNAMBIGUOUS. A SIGNATURE AND DATE IS REQUIRED ON ALL PAGES. MANUFACTURER RESERVES THE RIGHT TO RE-SUBMIT DRAWINGS WITH EXTENSIVE OR COMPLEX CHANGES REQUIRED TO AVOID MISFABRICATION. THIS MAY IMPACT THE DELIVERY SCHEDULE. APPROVAL OF THESE DRAWINGS INDICATES CONCLUSIVELY THAT THE METAL BUILDING SYSTEM MANUFACTURER HAS CORRECTLY INTERPRETED THE CONTRACT REQUIREMENTS, AND FURTHER CONSTITUTES AGREEMENT THAT THE BUILDING AS DRAWN WITH INDICATED CHANGES REPRESENTS THE TOTAL OF THE MATERIALS TO BE SUPPLIED BY MANUFACTURER. ANY CHANGES NOTED ON THE DRAWINGS NOT IN COMPLIANCE WITH THE TERMS AND REQUIREMENTS OF THE CONTRACT BETWEEN MANUFACTURER AND ITS CUSTOMER ARE NOT BINDING ON MANUFACTURER UNLESS SUBSEQUENTLY SPECIFICALLY ACKNOWLEDGED AND AGREED TO IN WRITING BY CHANGE ORDER OR SEPARATE DOCUMENTATION. MANUFACTURER RECOGNIZES THAT RUBBER STAMPS ARE ROUTINELY USED FOR INDICATING APPROVAL, DISAPPROVAL, REJECTION, OR MERE REVIEW OF THE DRAWINGS SUBMITTED. HOWEVER, MANUFACTURER DOES NOT ACCEPT CHANGES OR ADDITIONS TO CONTRACTUAL TERMS AND CONDITIONS THAT MAY APPEAR WITH USE OF A STAMP OR SIMILAR INDICATION OF APPROVAL, DISAPPROVAL, ETC. SUCH LANGUAGE APPLIED TO MANUFACTURER'S DRAWINGS BY THE CUSTOMER, ARCHITECT, ENGINEER, OR ANY OTHER PARTY WILL BE CONSIDERED AS UNACCEPTABLE ALTERNATIONS TO THESE DRAWING NOTES, AND WILL NOT ALTER THE CONTRACTUAL RIGHTS AND OBLIGATIONS EXISTING BETWEEN MANUFACTURER AND ITS CUSTOMER.

IMPORTANT NOTE: FINAL DETAILING, FABRICATION, AND DELIVERY DATE OF THIS PROJECT CANNOT BE COMPLETED UNTIL THE SIGNED APPROVALS ARE RETURNED TO THE METAL BUILDING MANUFACTURER.




| | | |
|------|---------|------------------|
| △ | | |
| △ | | |
| △ | | |
| △ | | FOR CONSTRUCTION |
| △ | 1/21/22 | FOR APPROVAL |
| REV. | DATE | REVISION |

PURCHASER: Mega Storage
PROJECT: Lee's Summit, MO
JOB NUMBER: 2022-01

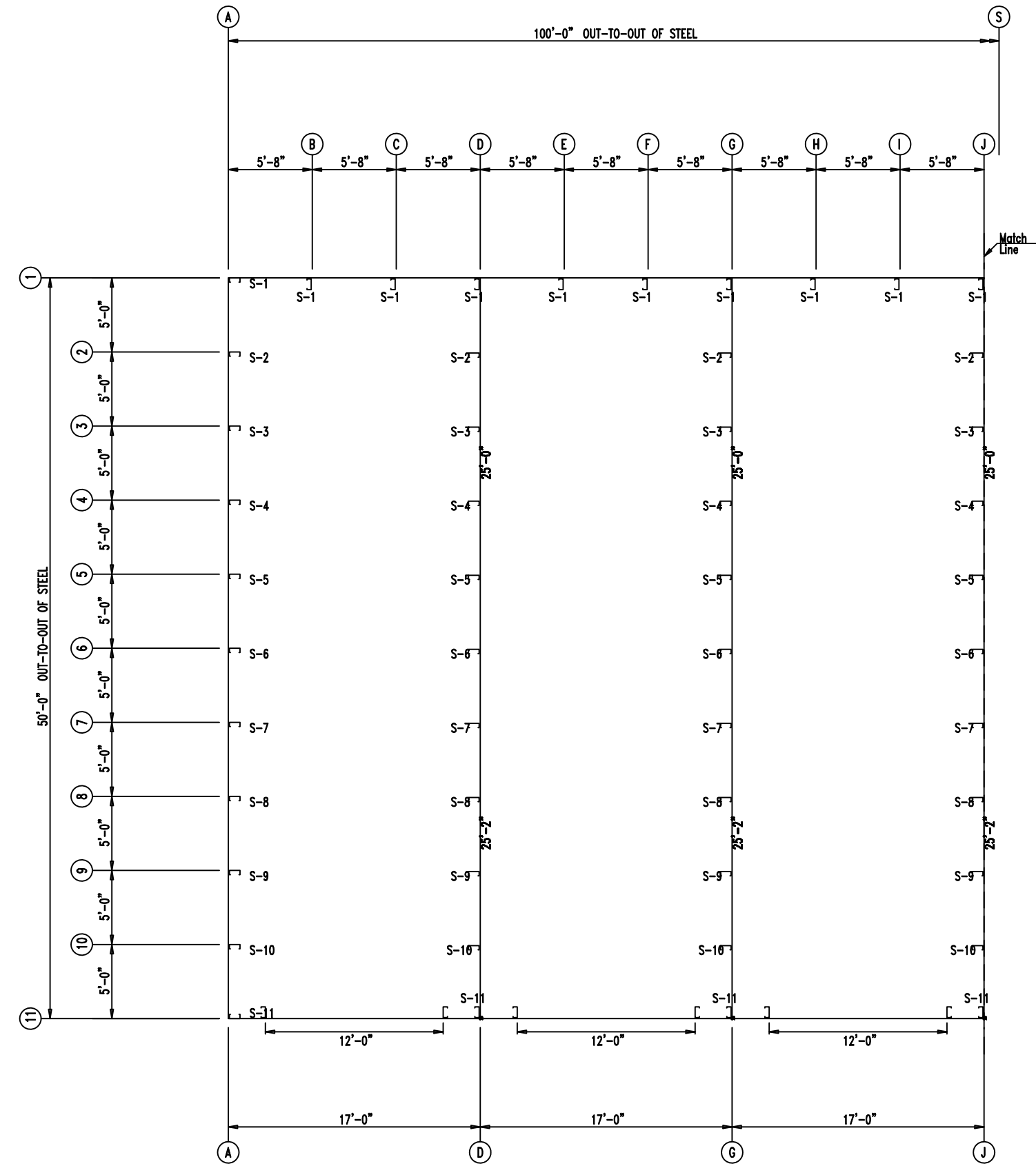


ANCHOR PLAN




| | | | | | |
|---|--------------------------|----------------|----------------------------|-----------------|------------|
|  906 West 9th Street Pella, IA 50219 (800) 225-0481 www.pellabuildings.com | DESCRIPTION: ANCHOR PLAN | | PROJECT: Bldg 1 and 3 | | |
| | CUSTOMER: Mega Storage | | LOCATION: Lee's Summit, MO | | |
| | DRN. BY JB | CK'D BY DES | DATE 1/21/22 | SCALE N.T.S. | REV. 00 |
| | QUOTATION NO. -- | | SHEET NO. 02 OF 15 | | |

| MARK | PART | LENGTH |
|------|--------|------------|
| S-1 | 6X2C16 | 14'-9 1/2" |
| S-2 | 6X2C16 | 15'-0" |
| S-3 | 6X2C16 | 15'-2 1/2" |
| S-4 | 6X2C16 | 15'-7 1/2" |
| S-5 | 6X2C16 | 15'-10" |
| S-6 | 6X2C16 | 16'-0 1/2" |
| S-7 | 6X2C16 | 16'-3" |
| S-8 | 6X2C16 | 16'-5 1/2" |
| S-9 | 6X2C16 | 16'-8" |
| S-10 | 6X2C16 | 17'-0" |
| S-11 | 6X2C16 | 17'-0" |

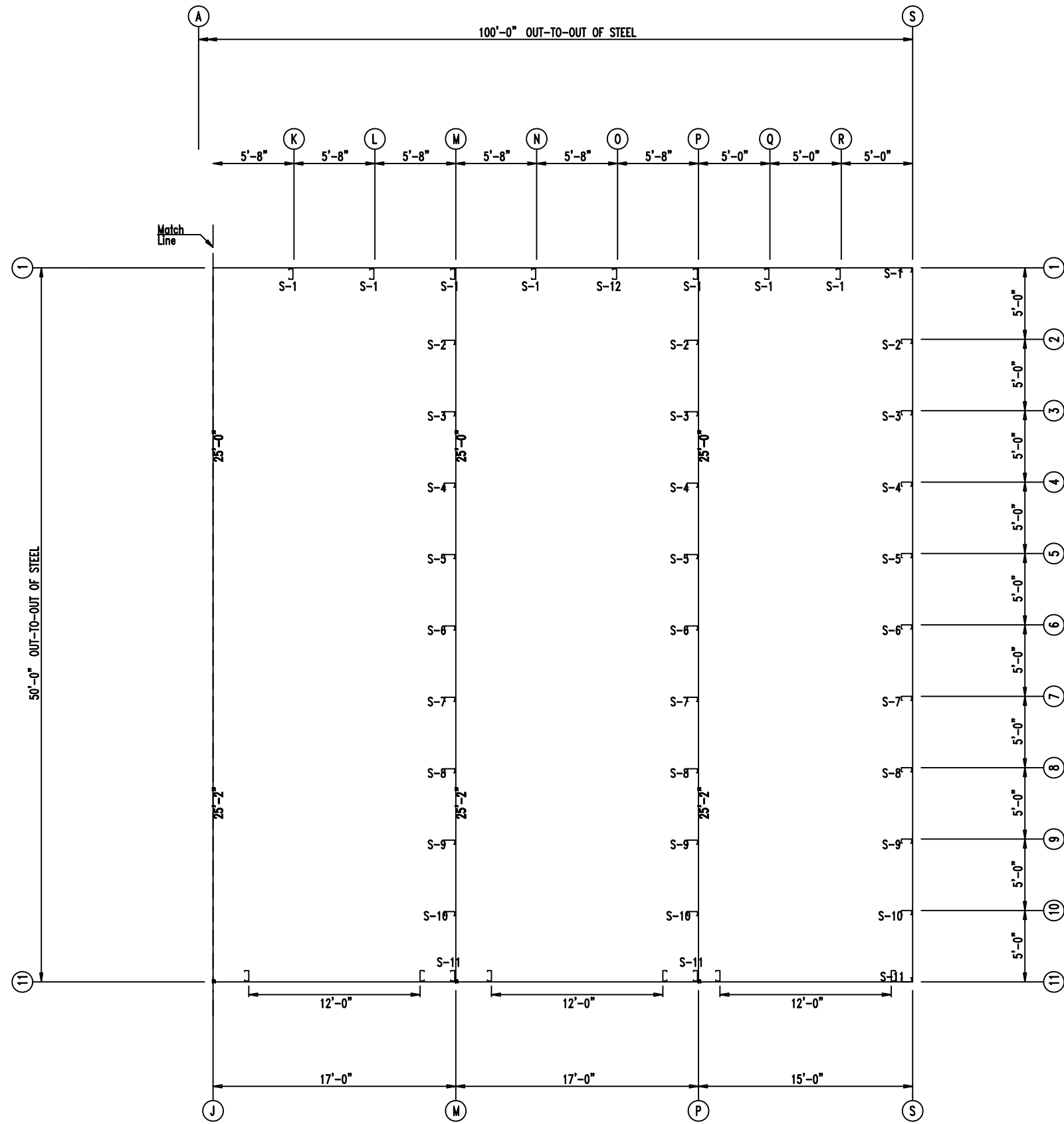


FLOOR PLAN

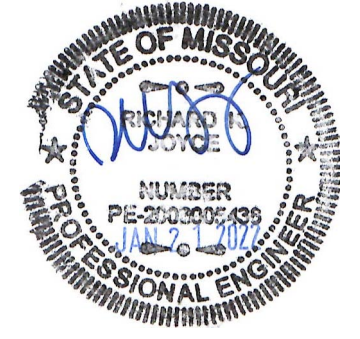



| | | | | | | |
|--|----------------------------|-----------------------|-----------------|------------|---------------------|-----------------------|
|  <p>906 West 9th Street Pella, IA 50219 (800) 225-0481 www.pellabuildings.com</p> | DESCRIPTION: FLOOR PLAN | | | | | |
| | CUSTOMER: Mega Storage | PROJECT: Bldg 1 and 3 | | | | |
| | LOCATION: Lee's Summit, MO | | | | | |
| DRN. BY JB | CK'D BY DES | DATE 1/21/22 | SCALE N.T.S. | REV. 00 | QUOTATION NO. -- | SHEET NO. 03 OF 15 |

| MARK | PART | LENGTH |
|------|---------|------------|
| S-1 | 6X2C16 | 14'-9 1/2" |
| S-2 | 6X2C16 | 15'-0" |
| S-3 | 6X2C16 | 15'-2" |
| S-4 | 6X2C16 | 15'-7 1/2" |
| S-5 | 6X2C16 | 15'-10" |
| S-6 | 6X2C16 | 16'-0 1/2" |
| S-7 | 6X2C16 | 16'-3" |
| S-8 | 6X2C16 | 16'-5 1/2" |
| S-9 | 6X2C16 | 16'-8" |
| S-10 | 6X2C16 | 17'-0" |
| S-11 | 6X2C16 | 17'-0" |
| S-12 | 6X25C14 | 14'-9 1/2" |



FLOOR PLAN



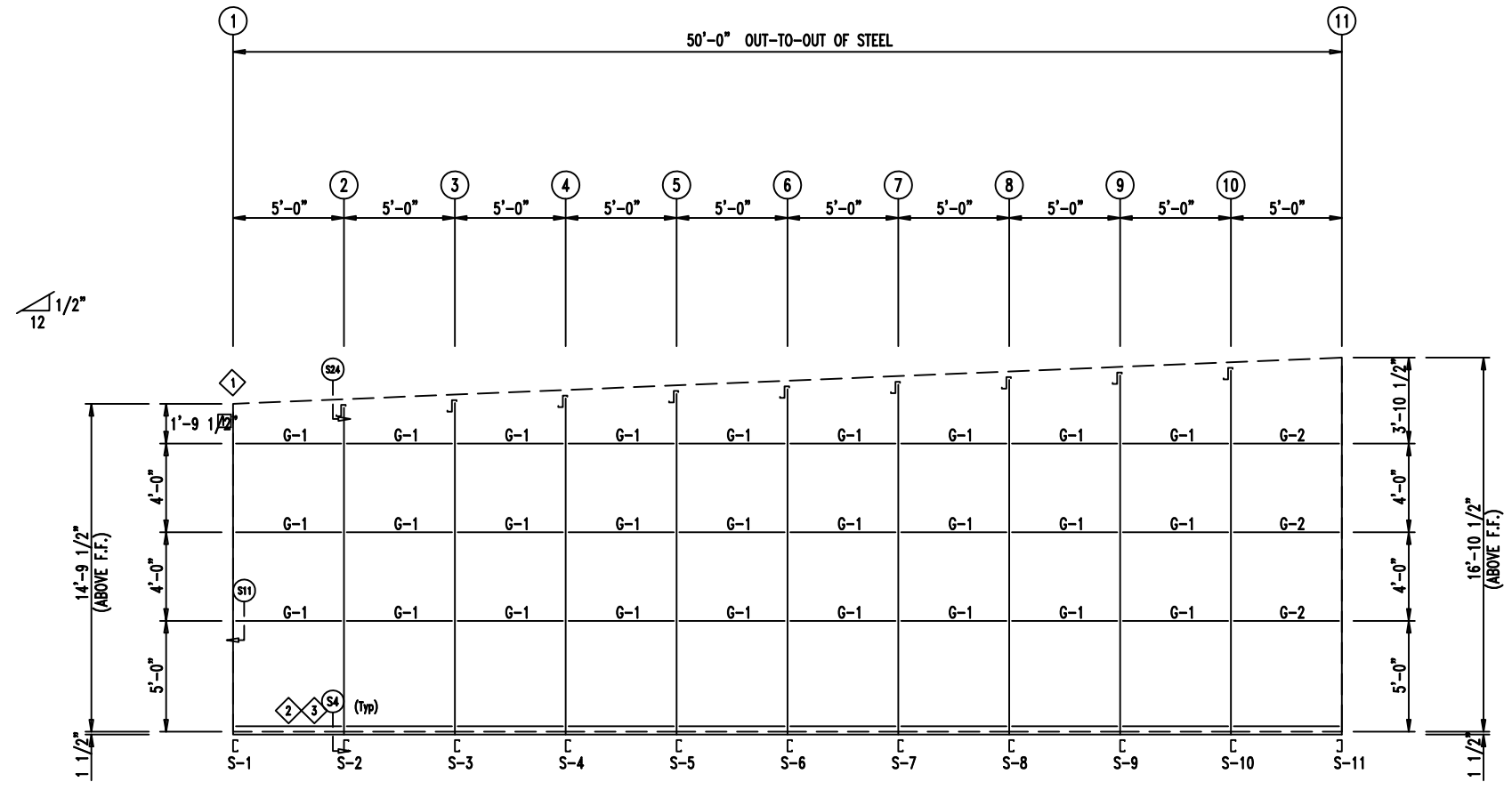
| | | | | | | |
|--|----------------------------|----------------|------------------------|-----------------|-----------------------|---------------------|
|  <p>906 West 9th Street Pella, IA 50219 (800) 225-0481 www.pellabuildings.com</p> | DESCRIPTION: FLOOR PLAN | | CUSTOMER: Mega Storage | | PROJECT: Bldg 1 and 3 | |
| | LOCATION: Lee's Summit, MO | | | | | |
| | DRN. BY JB | CK'D BY DES | DATE 1/21/22 | SCALE N.T.S. | REV. 00 | QUOTATION NO. -- |

| ID | PART | LENGTH | DETAIL |
|----|-------|--------|----------|
| 4 | FL72 | 10'-2" | TRIM_74 |
| 5 | FL16A | 6" | TRIM_229 |
| 6 | FL16A | 6" | TRIM_229 |
| 7 | FL16 | 10'-2" | TRIM_229 |
| 8 | FL16D | 20'-2" | TRIM_229 |

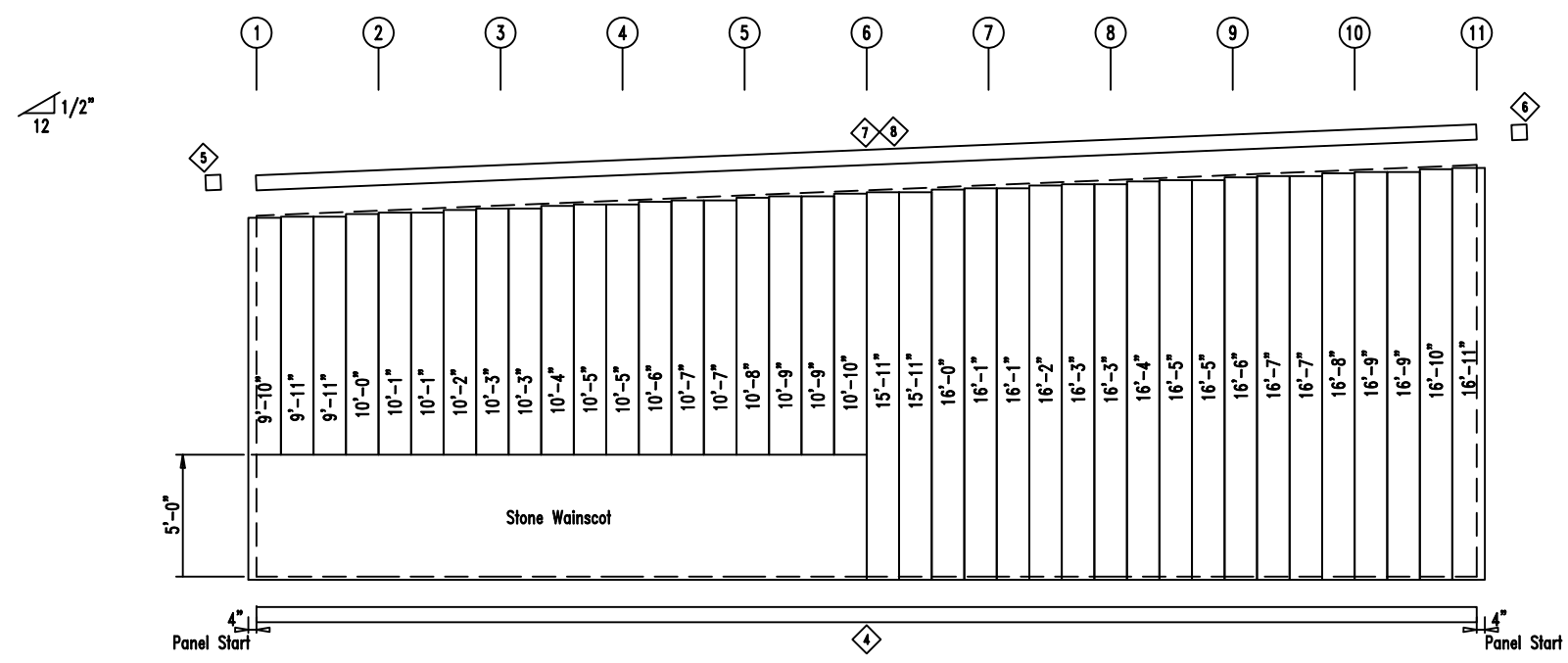
| MARK | PART | LENGTH |
|------|---------|------------|
| S-1 | 6X2C16 | 14'-9 1/2" |
| S-2 | 6X2C16 | 15'-0" |
| S-3 | 6X2C16 | 15'-2 1/2" |
| S-4 | 6X2C16 | 15'-5" |
| S-5 | 6X2C16 | 15'-7 1/2" |
| S-6 | 6X2C16 | 15'-10" |
| S-7 | 6X2C16 | 16'-0 1/2" |
| S-8 | 6X2C16 | 16'-3" |
| S-9 | 6X2C16 | 16'-5 1/2" |
| S-10 | 6X2C16 | 16'-8" |
| S-11 | 6X2C16 | 17'-0" |
| G-1 | 4X20C16 | 4'-9 1/2" |
| G-2 | 4X20C16 | 4'-7 1/2" |

| ID | MARK | LENGTH |
|----|------|--------|
| 1 | L3x3 | 20'-0" |
| 2 | BC-6 | 20'-0" |
| 3 | BC-6 | SCRAP |

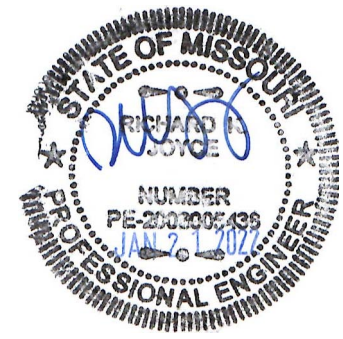
| ID | MARK/PART |
|----|-----------|
| 1 | MCLP |



ENDWALL FRAMING FRAME LINE: A



ENDWALL SHEETING & TRIM FRAME LINE: A
PANELS: 20 Ga. CP



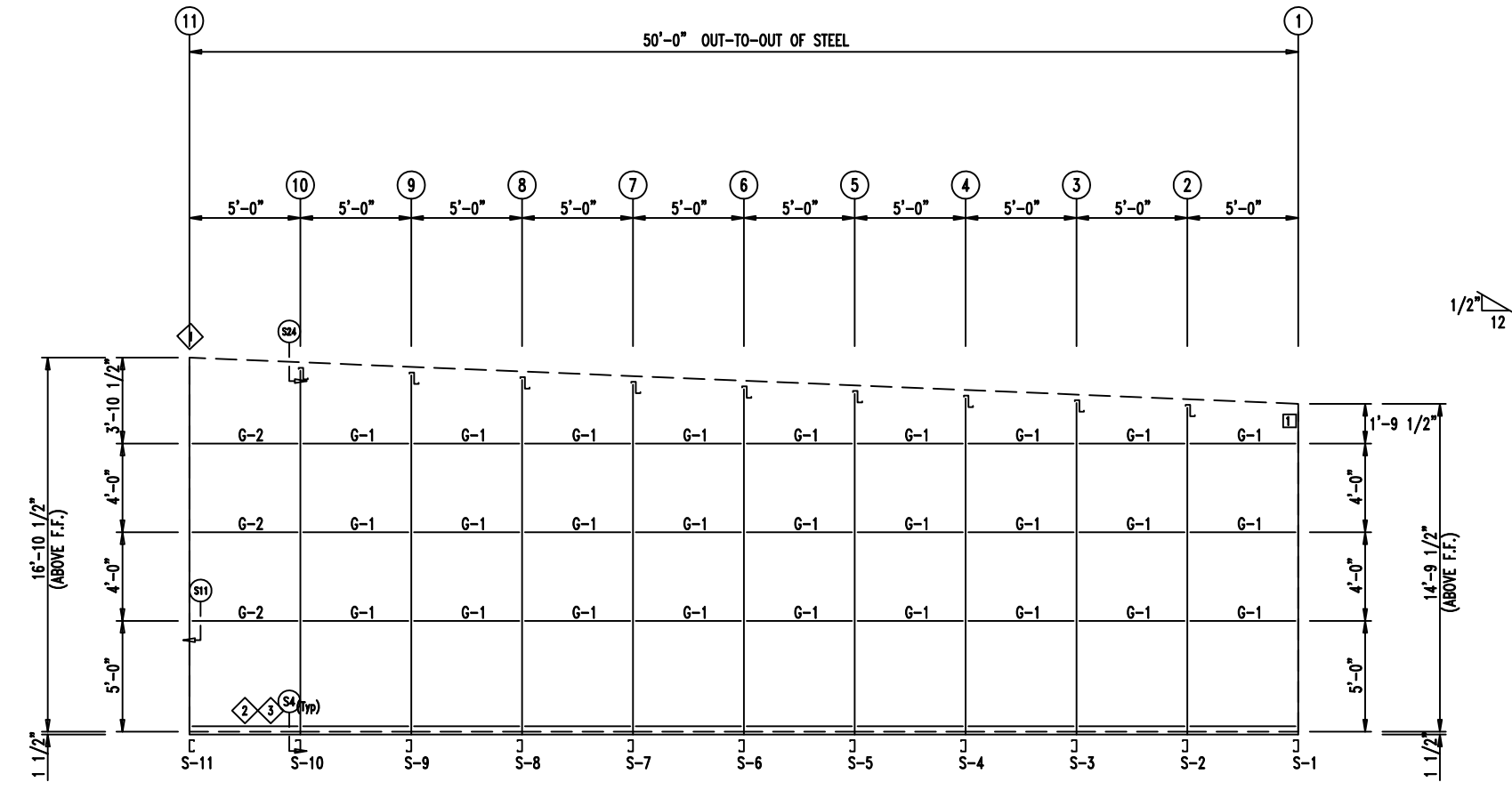
| | | |
|--|------------------------------|-----------------------|
| <p>906 West 9th Street Pella, IA 50219 (800) 225-0481 www.pellabuildings.com</p> | DESCRIPTION: ENDWALL DRAWING | |
| | CUSTOMER: Mega Storage | PROJECT: Bldg 1 and 3 |
| | LOCATION: Lee's Summit, MO | |
| | DRN. BY: JB | CK'D BY: DES |
| SCALE: N.T.S. | REV. 00 | QUOTATION NO. -- |
| | | SHEET NO. 05 OF 15 |

| TRIM TABLE | | LENGTH | DETAIL |
|------------|-------|--------|----------|
| ◇ ID | PART | | |
| 4 | FL72 | 10'-2" | TRIM 74 |
| 5 | FL16A | 6" | |
| 6 | FL16A | 6" | |
| 7 | FL16D | 20'-2" | TRIM 229 |

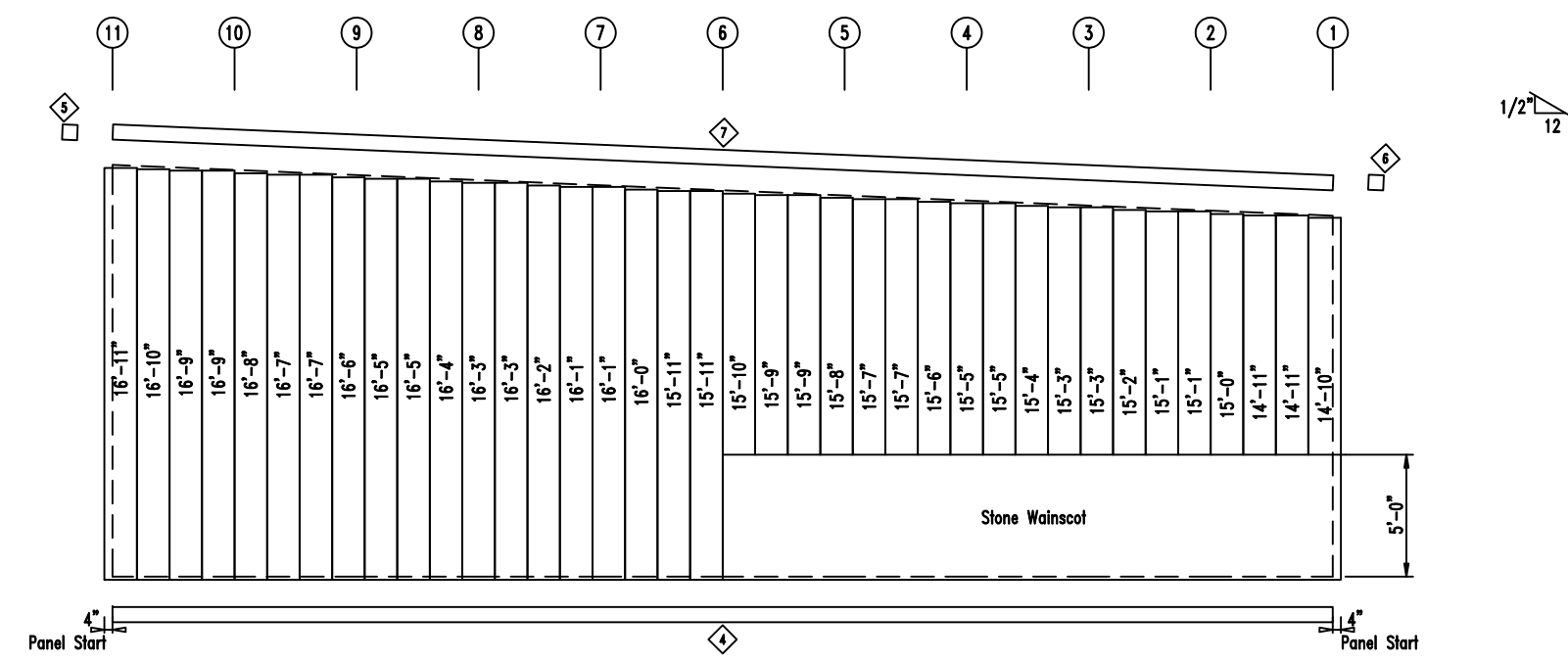
| MEMBER TABLE | | |
|--------------|---------|------------|
| MARK | PART | LENGTH |
| S-1 | 6X2C16 | 14'-9 1/2" |
| S-2 | 6X2C16 | 15'-0" |
| S-3 | 6X2C16 | 15'-2 1/2" |
| S-4 | 6X2C16 | 15'-5" |
| S-5 | 6X2C16 | 15'-7 1/2" |
| S-6 | 6X2C16 | 15'-10" |
| S-7 | 6X2C16 | 16'-0 1/2" |
| S-8 | 6X2C16 | 16'-3" |
| S-9 | 6X2C16 | 16'-5 1/2" |
| S-10 | 6X2C16 | 16'-8" |
| S-11 | 6X2C16 | 17'-0" |
| G-1 | 4X20C16 | 4'-9 1/2" |
| G-2 | 4X20C16 | 4'-7 1/2" |

| ANGLE TABLE | | |
|-------------|------|--------|
| ◇ ID | MARK | LENGTH |
| 1 | L3x3 | 20'-0" |
| 2 | BC-6 | 20'-0" |
| 3 | BC-6 | SCRAP |

| CONNECTION PLATES | |
|-------------------|-----------|
| ◇ ID | MARK/PART |
| 1 | MCLP |



ENDWALL FRAMING FRAME LINE: S



ENDWALL SHEETING & TRIM FRAME LINE: S

PANELS: 20 Ga. CP



| | | |
|--|------------------------------|-----------------------|
| <p>906 West 9th Street Pella, IA 50219 (800) 225-0481 www.pellabuildings.com</p> | DESCRIPTION: ENDWALL DRAWING | |
| | CUSTOMER: Mega Storage | PROJECT: Bldg 1 and 3 |
| LOCATION: Lee's Summit, MO | | |
| DRN. BY: JB | CK'D BY: DES | DATE: 1/21/22 |
| SCALE: N.T.S. | REV: 00 | QUOTATION NO.: -- |
| | | SHEET NO.: 06 OF 15 |

As Noted on Plans Review

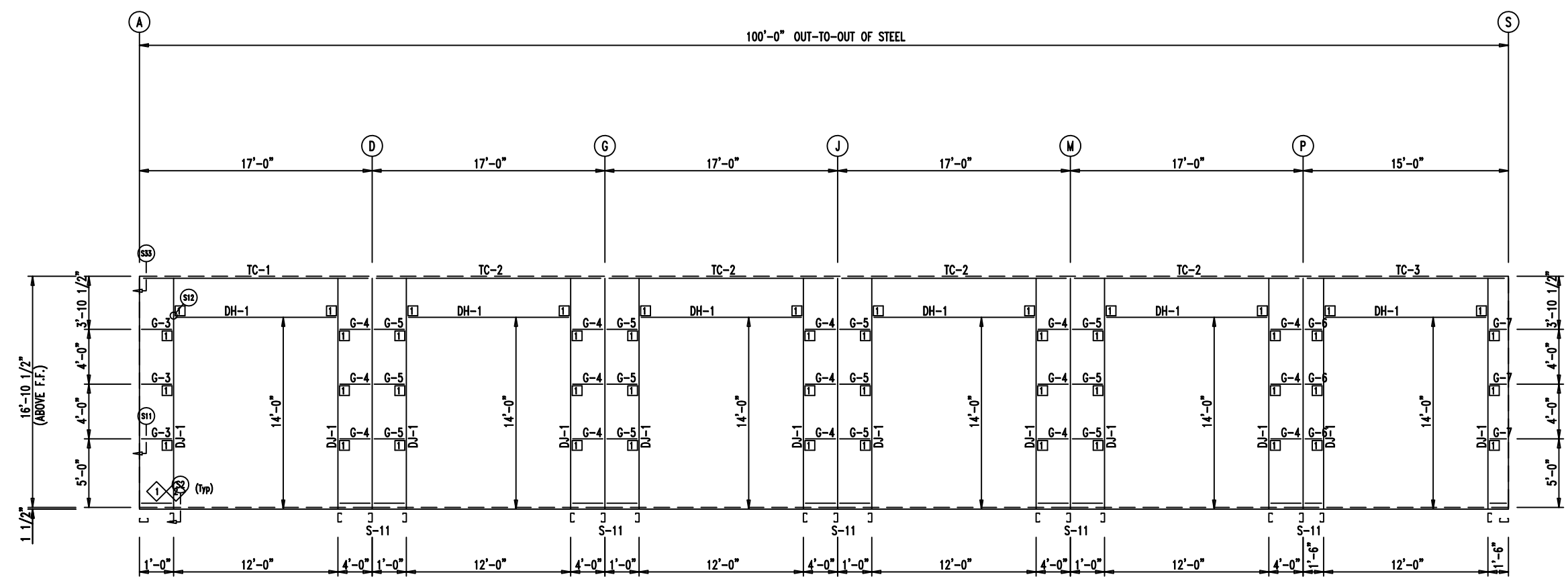
Development Services Department
Lee's Summit, Missouri
04/19/2024

| ID | PART | LENGTH | DETAIL |
|----|--------|--------|----------|
| 3 | FL23X | 14'-2" | TRIM_239 |
| 4 | FL-HC6 | 12'-1" | TRIM_239 |
| 5 | FL26B | 20'-2" | TRIM_252 |
| 6 | FL72 | 10'-2" | TRIM_274 |
| 7 | FL72 | SCRAP | TRIM_74 |
| 8 | FL835x | 17'-0" | TRIM_198 |
| 9 | FL16C | 6" | TRIM_198 |
| 10 | FL17A | 20'-2" | TRIM_322 |

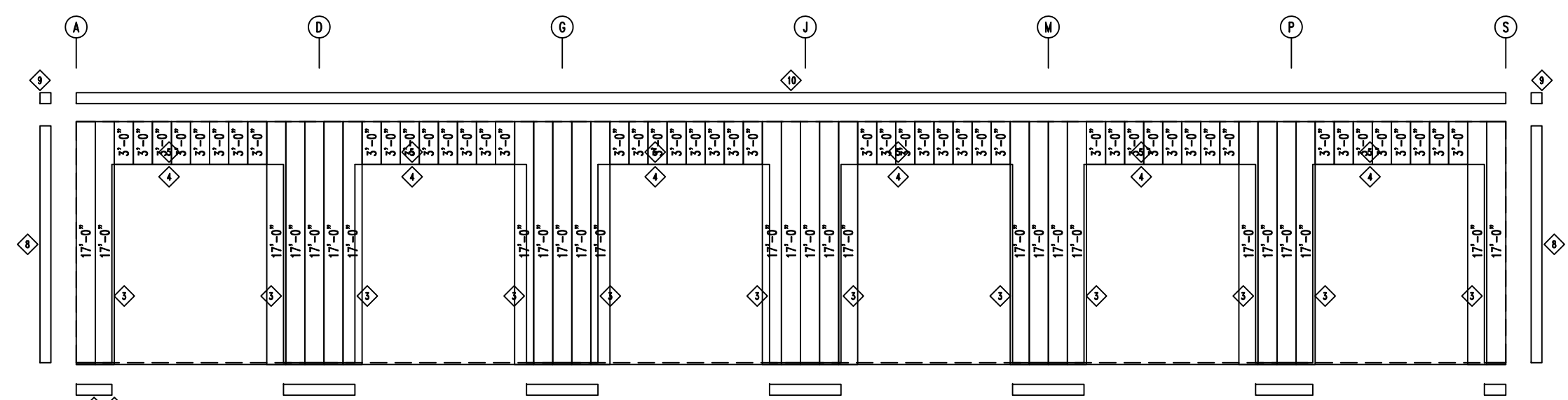
| MARK | PART | LENGTH |
|------|---------|-------------|
| S-11 | 6X2C16 | 17'-0" |
| DJ-1 | 6X40C14 | 17'-0" |
| TC-1 | 6X2CH16 | 16'-11 3/4" |
| TC-2 | 6X2CH16 | 17'-0" |
| TC-3 | 6X2CH16 | 14'-11 3/4" |
| DH-1 | 6X25C16 | 11'-11 1/2" |
| G-3 | 4X20C16 | --- |
| G-4 | 4X20C16 | --- |
| G-5 | 4X20C16 | --- |
| G-6 | 4X20C16 | 1'-1 3/4" |
| G-7 | 4X20C16 | 8" |

| ID | MARK | LENGTH |
|----|------|--------|
| 1 | BC-6 | 20'-0" |
| 2 | BC-6 | SCRAP |

| ID | MARK/PART |
|----|-----------|
| 1 | MCLP |




SIDEWALL FRAMING FRAME LINE: 11



SIDEWALL SHEETING & TRIM FRAME LINE: 11
PANELS: 20 Ga. CP

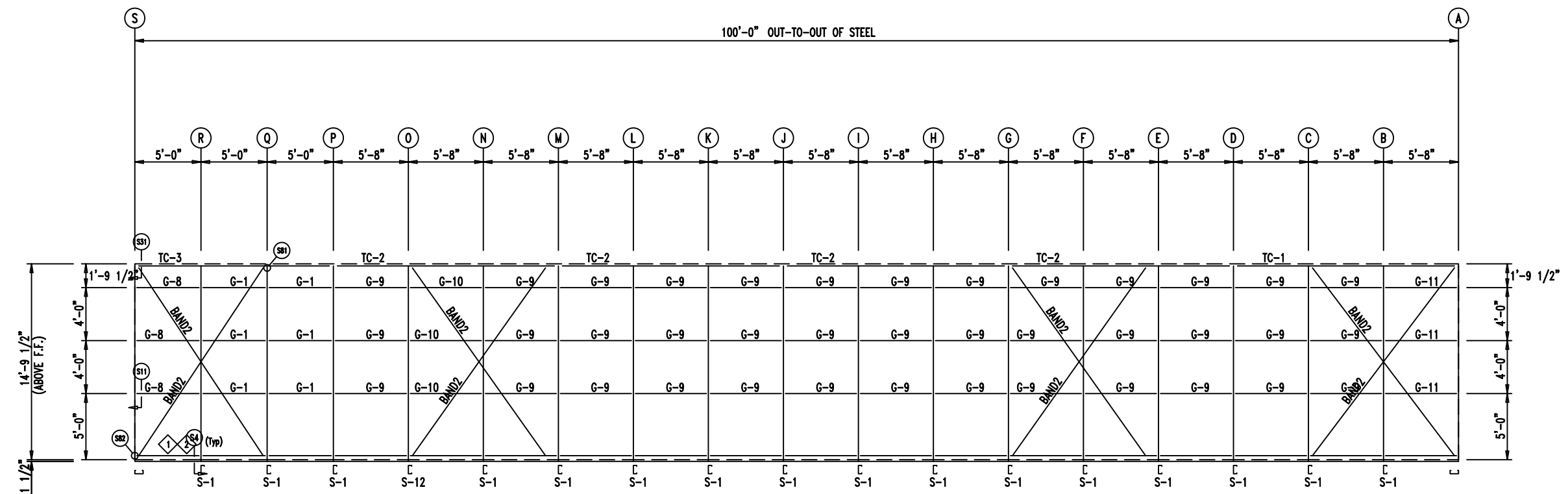


| | | |
|--|-------------------------------|-----------------------|
|  <p>906 West 9th Street Pella, IA 50219 (800) 225-0481 www.pellabuildings.com</p> | DESCRIPTION: SIDEWALL DRAWING | |
| | CUSTOMER: Mega Storage | PROJECT: Bldg 1 and 3 |
| LOCATION: Lee's Summit, MO | | |
| DRN. BY: JB | CK'D BY: DES | DATE: 1/21/22 |
| SCALE: N.T.S. | REV. 00 | QUOTATION NO. -- |
| SHEET NO. 7 OF 15 | | |

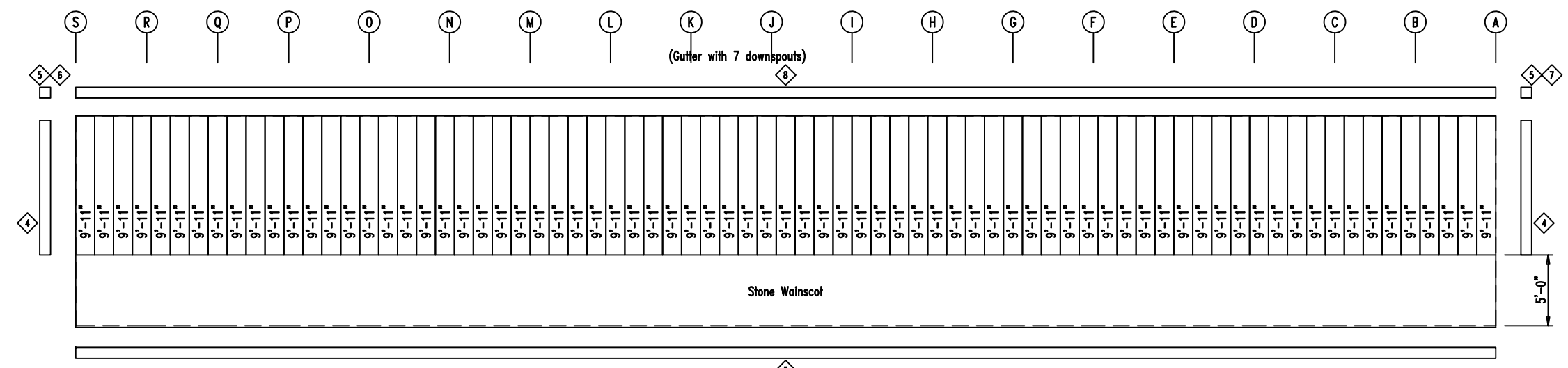
| ID | PART | LENGTH | DETAIL |
|----|--------|---------|---------|
| 3 | FL72 | 10'-2" | TRIM 74 |
| 4 | FL835x | 14'-11" | |
| 5 | FL16C | 6" | |
| 6 | FL18A | 6" | |
| 7 | FL18A | 6" | |
| 8 | FL18D | 20'-2" | |

| MARK | PART | LENGTH |
|------|---------|-------------|
| S-1 | 6X2C16 | 14'-9 1/2" |
| S-12 | 6X25C14 | 14'-9 1/2" |
| TC-1 | 6X2CH16 | 16'-11 3/4" |
| TC-2 | 6X2CH16 | 17'-0" |
| TC-3 | 6X2CH16 | 14'-11 3/4" |
| G-1 | 4X20C16 | 4'-9 1/2" |
| G-8 | 4X20C16 | 4'-5 3/4" |
| G-9 | 4X20C16 | 5'-5 1/2" |
| G-10 | 4X20C16 | 5'-5" |
| G-11 | 4X20C16 | 4'-11 3/4" |

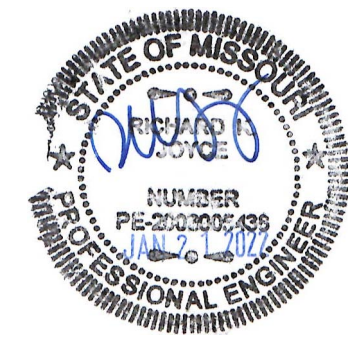
| ID | MARK | LENGTH |
|----|------|--------|
| 1 | BC-6 | 20'-0" |
| 2 | BC-6 | SCRAP |



SIDEWALL FRAMING FRAME LINE: 1

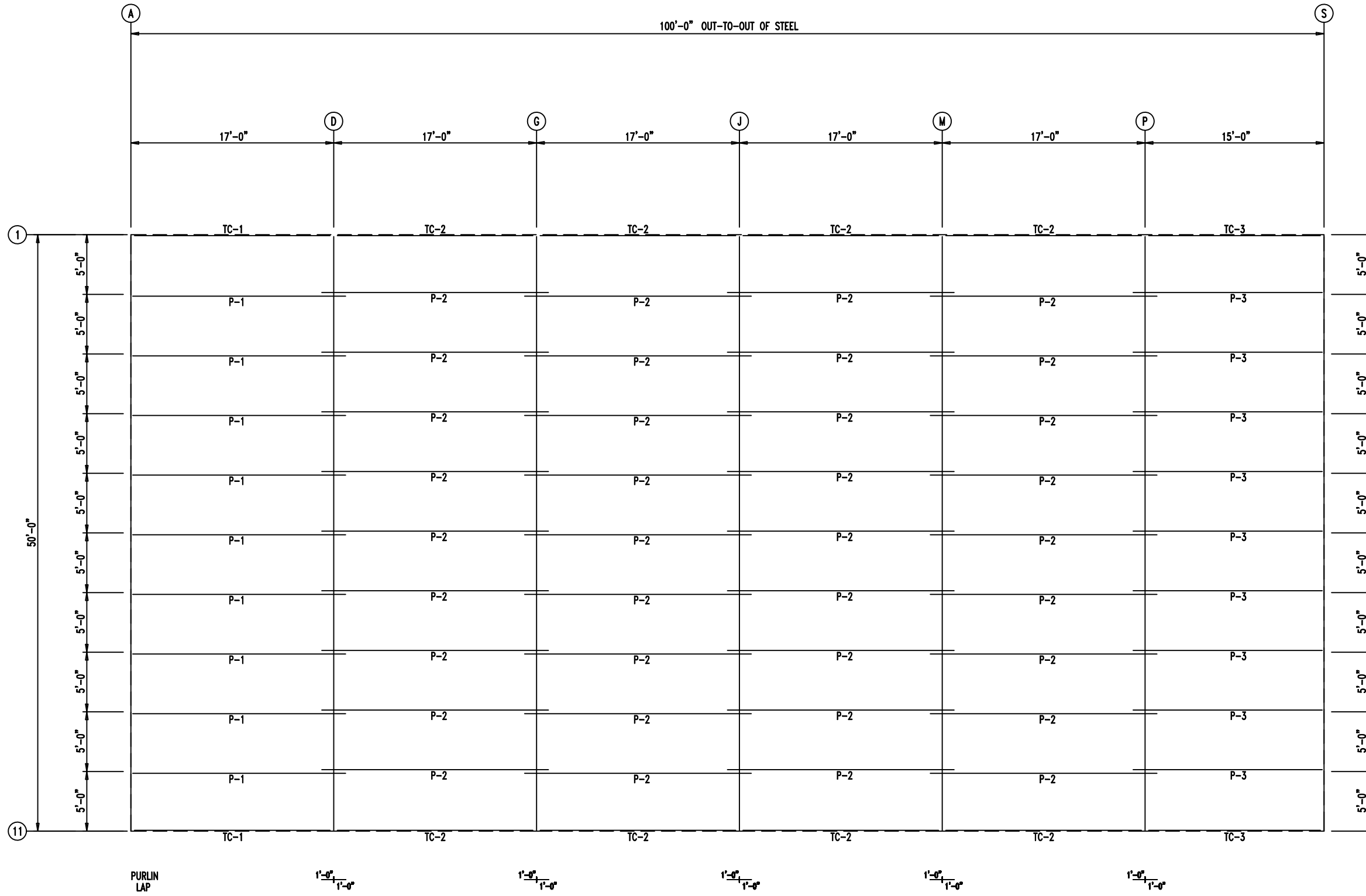


SIDEWALL SHEETING & TRIM FRAME LINE: 1
PANELS: 20 Ga. CP



| | | |
|--|-------------------------------|-----------------------|
| 906 West 9th Street Pella, IA 50219 (800) 225-0481 www.pellabuildings.com | DESCRIPTION: SIDEWALL DRAWING | |
| | CUSTOMER: Mega Storage | PROJECT: Bldg 1 and 3 |
| | LOCATION: Lee's Summit, MO | |
| | DRN. BY: JB | CK'D BY: DES |
| SCALE: N.T.S. | REV. 00 | QUOTATION NO. -- |
| SHEET NO. 8 OF 15 | | |

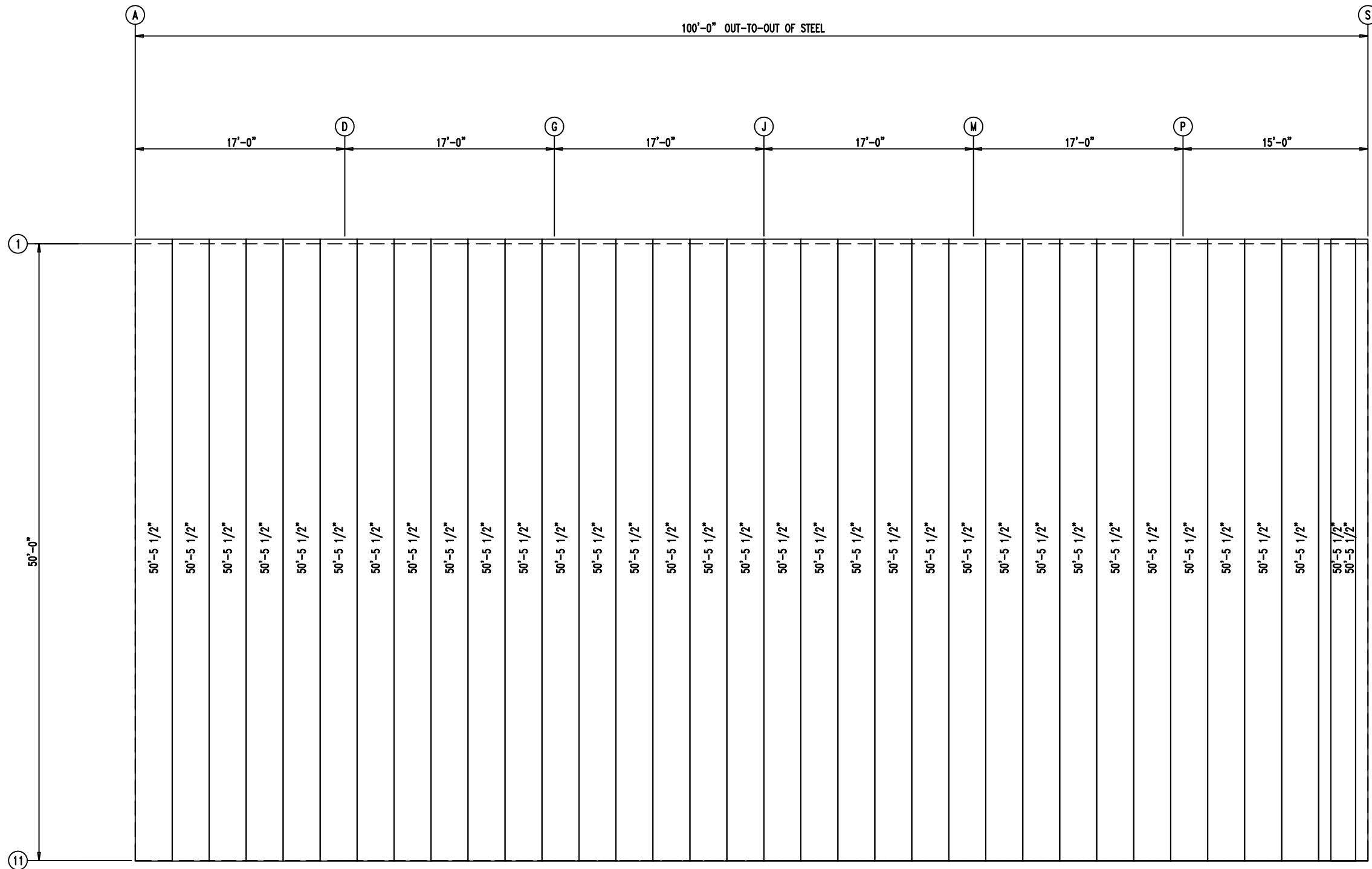
| MEMBER TABLE | | |
|---------------------------|---------|-------------|
| RELEASED FOR CONSTRUCTION | | |
| As Noted on Plans Review | | |
| MARK | PART | LENGTH |
| TC-1 | 6X2CH16 | 16'-11 3/4" |
| TC-2 | 6X2CH16 | 17'-0" |
| TC-3 | 6X2CH16 | 15'-0" |
| P-1 | 8X25Z16 | 19'-0" |
| P-2 | 8X25Z16 | 16'-0" |
| P-3 | 8X25Z16 | 16'-0" |



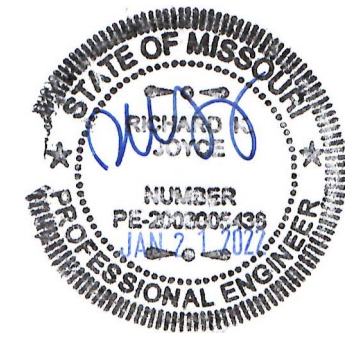
ROOF FRAMING



| | | | | | | |
|--|----------------------------|-----------------------|-----------------|------------|---------------------|----------------------|
| <p>PELLA BUILDING SYSTEMS</p> <p>906 West 9th Street Pella, IA 50219 (800) 225-0481 www.pellabuildings.com</p> | DESCRIPTION: ROOF FRAMING | | | | | |
| | CUSTOMER: Mega Storage | PROJECT: Bldg 1 and 3 | | | | |
| | LOCATION: Lee's Summit, MO | | | | | |
| DRN. BY JB | CK'D BY DES | DATE 1/21/22 | SCALE N.T.S. | REV. 00 | QUOTATION NO. -- | SHEET NO. 9 OF 15 |



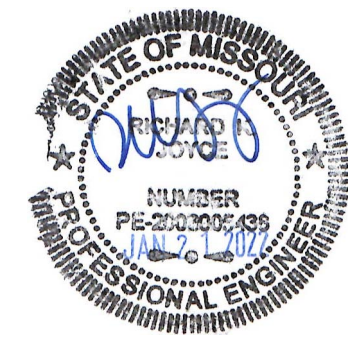
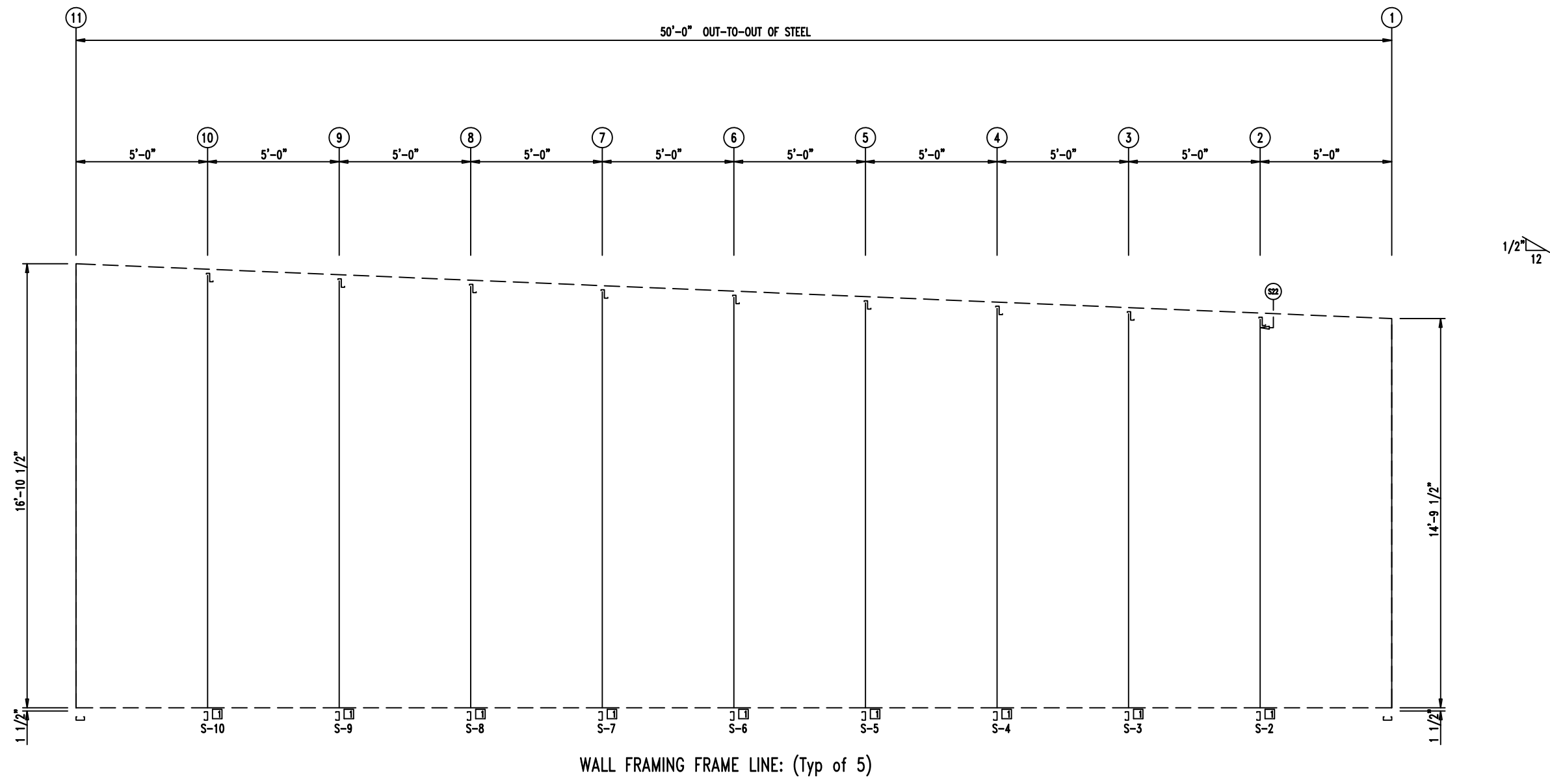
ROOF SHEETING & TRIM
 PANELS: 26 Ga. PR - Galvalume+ w/ Drip Stop



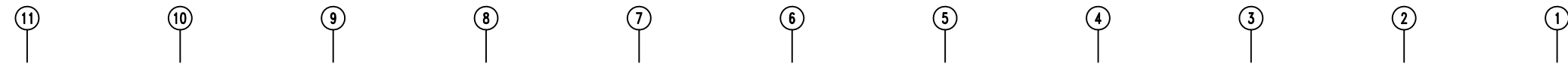
| | | | | | | |
|--|-----------------------------------|------------------------------|----------------------|----------------------|-----------------|--------------------------|
| 906 West 9th Street Pella, IA 50219 (800) 225-0481 www.pellabuildings.com | DESCRIPTION: ROOF SHEETING | | | | | |
| | CUSTOMER: Mega Storage | PROJECT: Bldg 1 and 3 | | | | |
| | LOCATION: Lee's Summit, MO | | | | | |
| | DRN. BY: JB | CK'D BY: DES | DATE: 1/21/22 | SCALE: N.T.S. | REV.: 00 | QUOTATION NO.: -- |

| MARK | PART | LENGTH |
|------|--------|------------|
| S-2 | 6X2C16 | 15'-0" |
| S-3 | 6X2C16 | 15'-2 1/2" |
| S-4 | 6X2C16 | 15'-3" |
| S-5 | 6X2C16 | 15'-3 1/2" |
| S-6 | 6X2C16 | 15'-10" |
| S-7 | 6X2C16 | 16'-0 1/2" |
| S-8 | 6X2C16 | 16'-3" |
| S-9 | 6X2C16 | 16'-5 1/2" |
| S-10 | 6X2C16 | 16'-8" |

| CONNECTION PLATES | |
|-------------------|-----------|
| ID | MARK/PART |
| 1 | FC |



| | | | | | | |
|--|--------------------------------|-----------------------|---------------|---------|------------------|--------------------|
| <p>906 West 9th Street Pella, IA 50219 (800) 225-0481 www.pellabuildings.com</p> | DESCRIPTION: PARTITION FRAMING | | | | | |
| | CUSTOMER: Mega Storage | PROJECT: Bldg 1 and 3 | | | | |
| | LOCATION: Lee's Summit, MO | | | | | |
| DRN. BY: JB | CK'D BY: DES | DATE: 1/21/22 | SCALE: N.T.S. | REV. 00 | QUOTATION NO. -- | SHEET NO. 11 OF 15 |



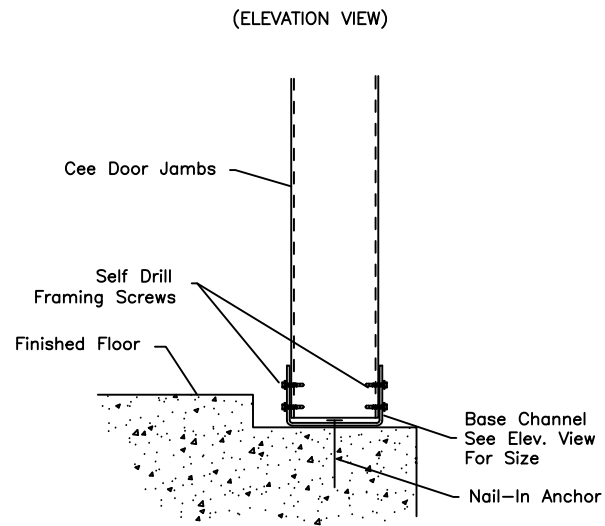
| | |
|--------|--------|
| 25'-2" | 25'-0" |
| 25'-2" | 25'-0" |
| 25'-2" | 25'-0" |
| 25'-2" | 25'-0" |
| 25'-2" | 25'-0" |
| 25'-2" | 25'-0" |

1/2" = 12'

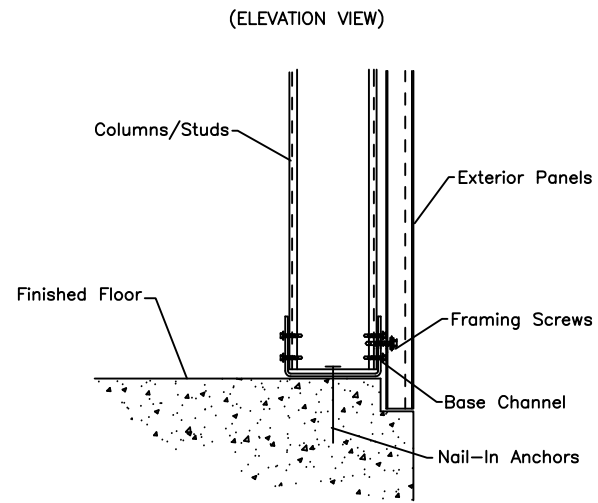
WALL SHEETING & TRIM FRAME LINE: (Typ of 5)
 PANELS: 29 Ga. PR - Galvalume +



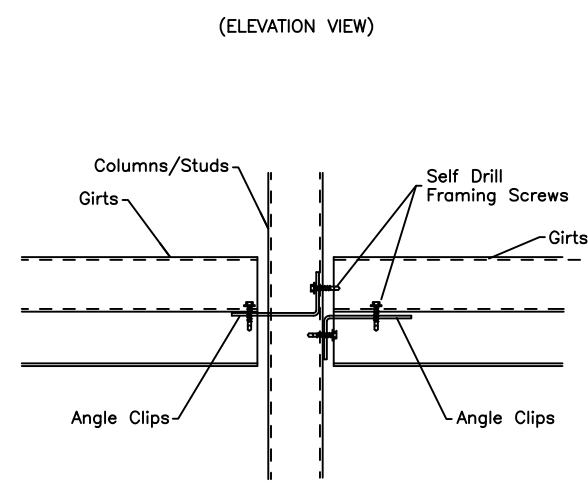
| | | | | | | |
|--|---------------------------------|-----------------------|---------------|---------------|----------|-------------------|
| 906 West 9th Street Pella, IA 50219 (800) 225-0481 www.pellabuildings.com | DESCRIPTION: PARTITION SHEETING | | | | | |
| | CUSTOMER: Mega Storage | PROJECT: Bldg 1 and 3 | | | | |
| | LOCATION: Lee's Summit, MO | | | | | |
| | DRN. BY: JB | CK'D BY: DES | DATE: 1/21/22 | SCALE: N.T.S. | REV.: 00 | QUOTATION NO.: -- |



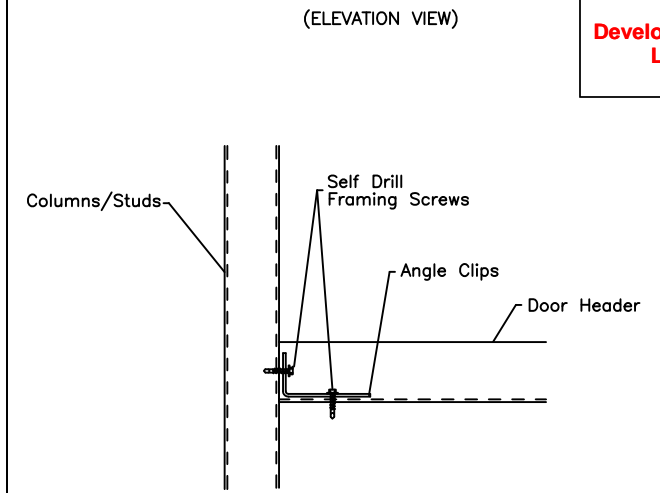
(S2) BASE @ DOOR JAMB



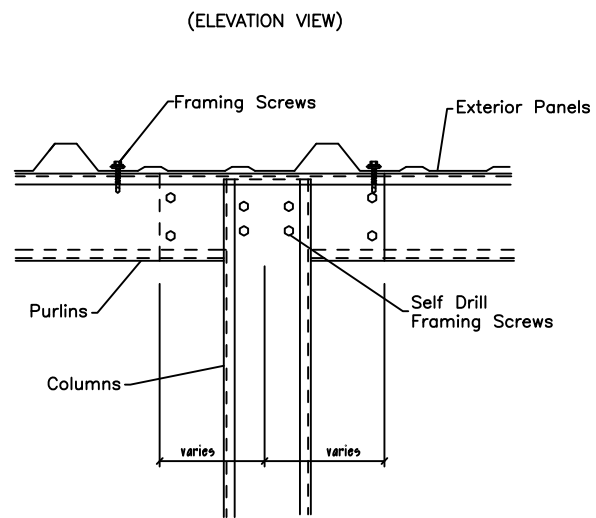
(S4) COLUMN BASE @ SHEETED WALL



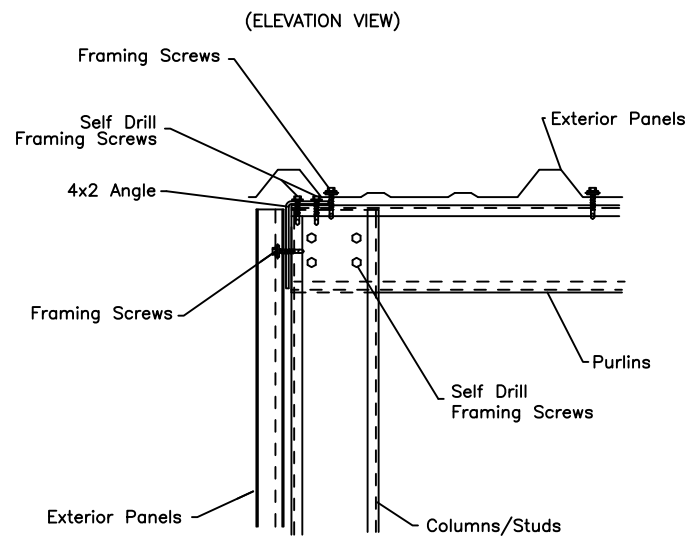
(S11) GIRT CONNECTION



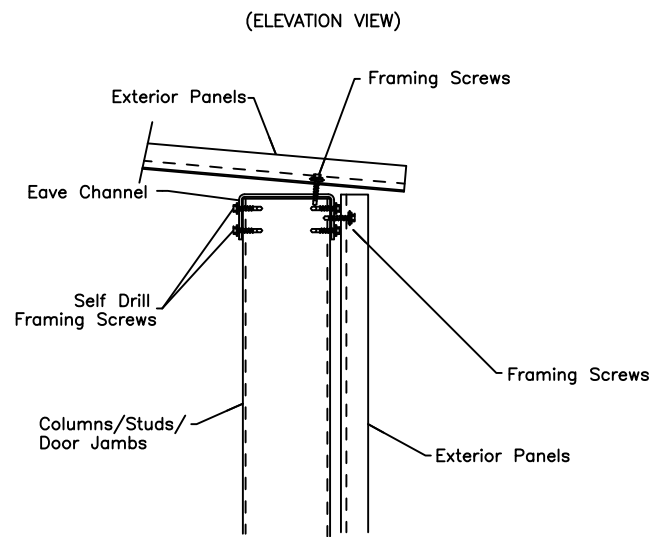
(S12) DOOR HEADER TO JAMB



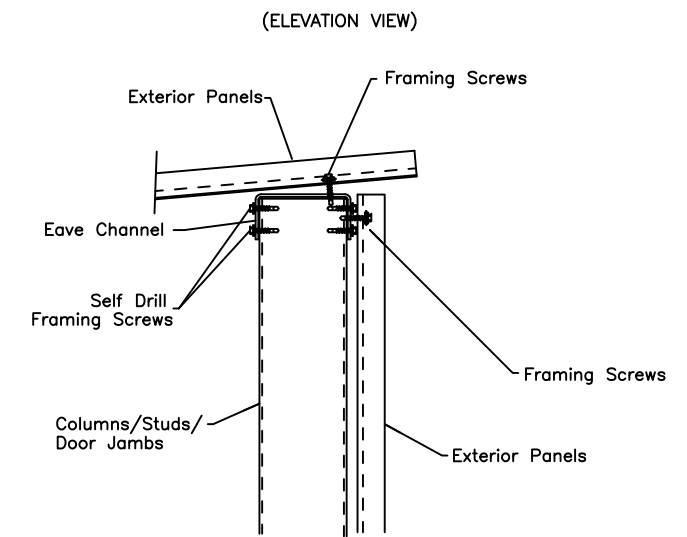
(S22) COLUMN TO PURLIN @ LAP



(S24) RAKE @ SHEETED ENDWALL



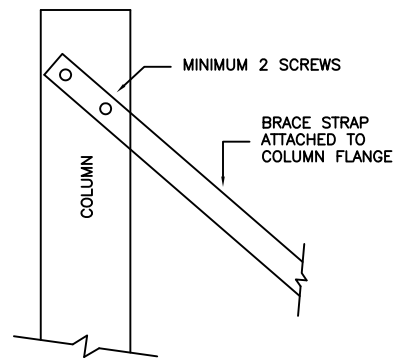
(S31) EAVE



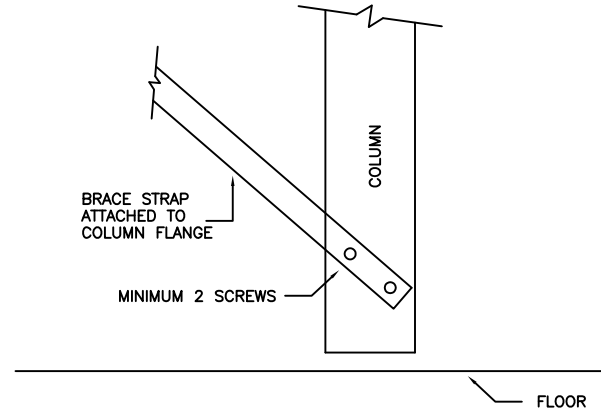
(S33) EAVE



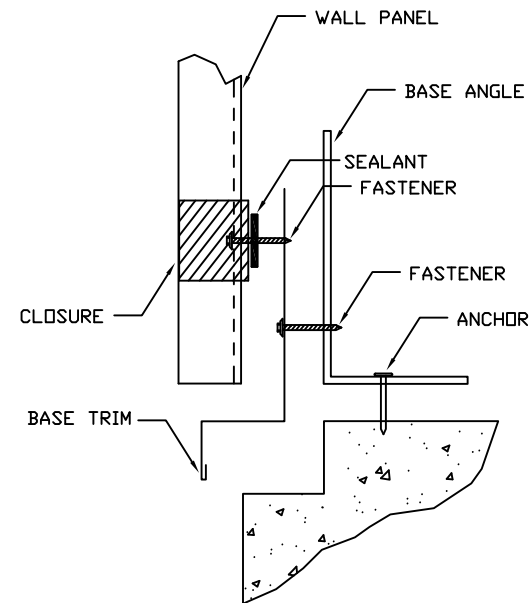
| | | | | | |
|------------------------------|----------------|-----------------|-----------------------|------------|-----------------------|
| DESCRIPTION: DETAIL DRAWINGS | | | | | |
| CUSTOMER: Mega Storage | | | PROJECT: Bldg 1 and 3 | | |
| LOCATION: Lee's Summit, MO | | | | | |
| DRN. BY JB | CK'D BY DES | DATE 1/21/22 | SCALE N.T.S. | REV. 00 | QUOTATION NO. -- |
| | | | | | SHEET NO. 13 OF 15 |



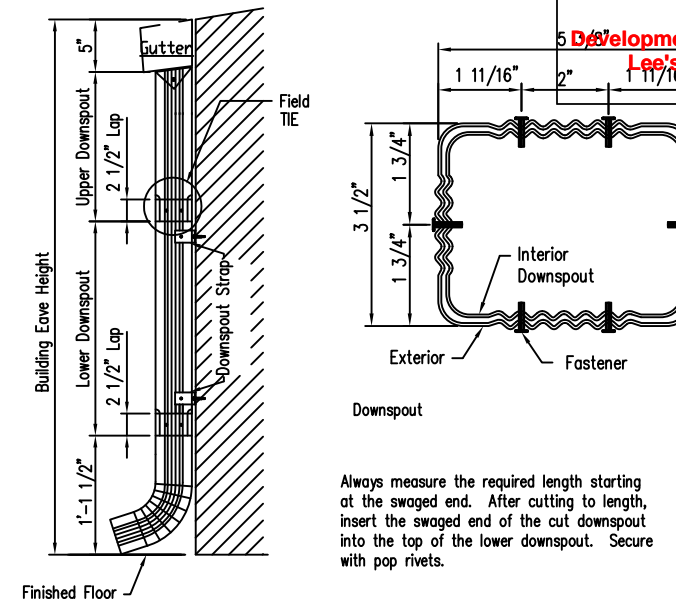
S81 BRACE STRAP TO COLUMN TOP



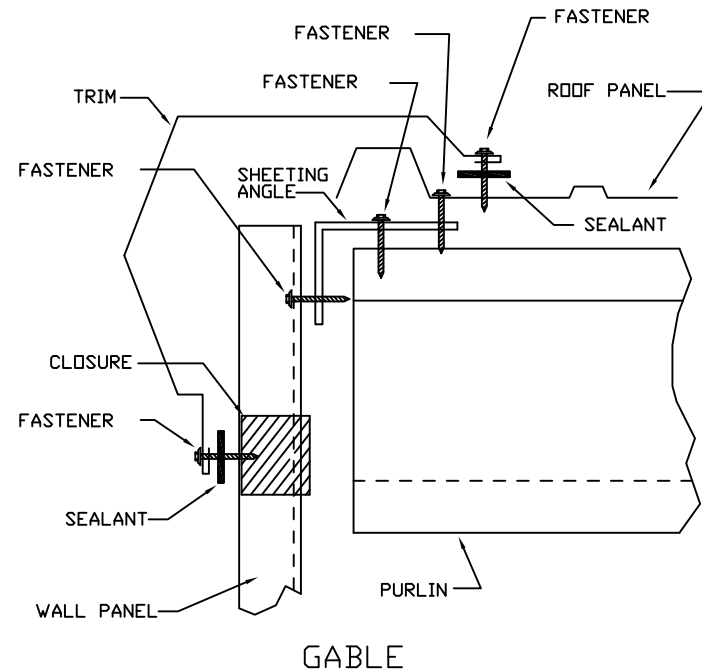
S82 BRACE STRAP TO COLUMN BOTTOM



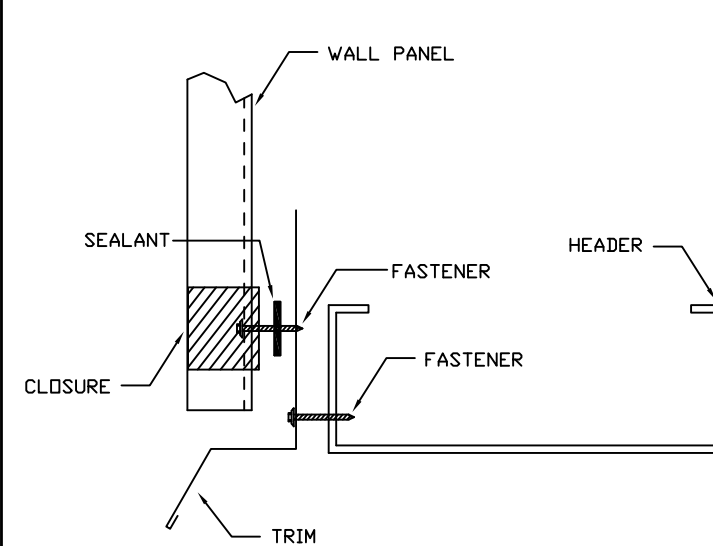
TRIM_74
BASE SEAL



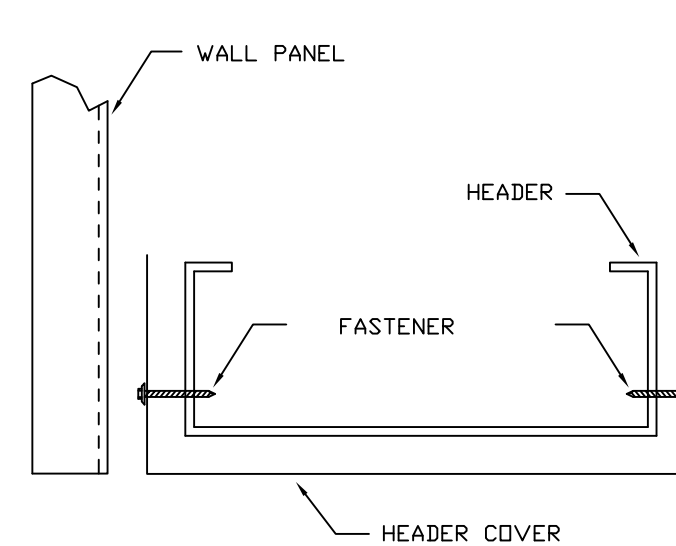
3 1/2" x 5 3/8" Roll Form Downspout Elevation
DRAWING NO. TRIM_175
1. A Downspout Strap is required at all Downspout Splices.



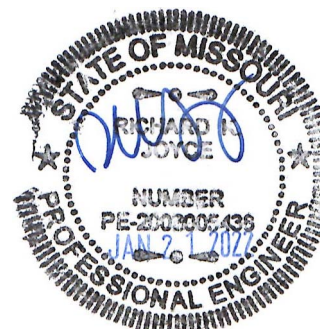
TRIM_229
GABLE



TRIM_232
HEADER

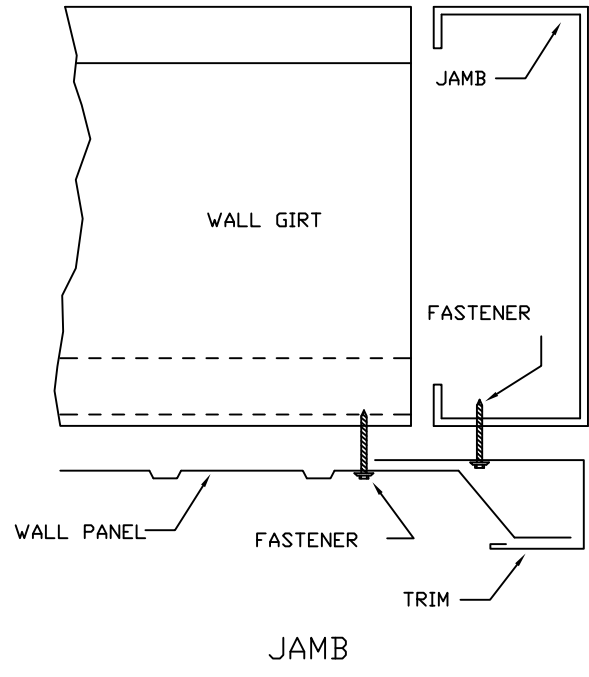


TRIM_235
HEADER COVER

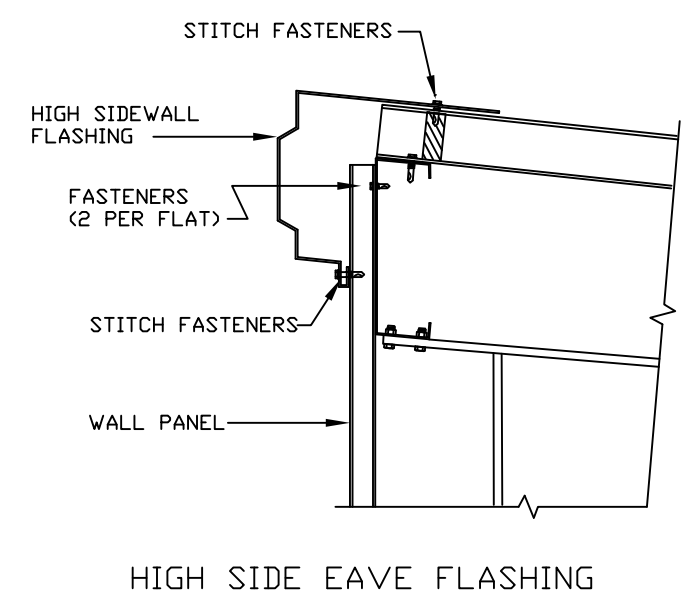


906 West 9th Street Pella, IA 50219
(800) 225-0481 www.pellabuildings.com

| | | | | |
|---------------|---------|------------------|-----------------------|------|
| DESCRIPTION: | | DETAIL DRAWINGS | | |
| CUSTOMER: | | Mega Storage | PROJECT: Bldg 1 and 3 | |
| LOCATION: | | Lee's Summit, MO | | |
| DRN. BY | CK'D BY | DATE | SCALE | REV. |
| JB | DES | 1/21/22 | N.T.S. | 00 |
| QUOTATION NO. | | | SHEET NO. | |
| -- | | | 14 OF 15 | |



TRIM_239



TRIM_322



| | | | | | | |
|------------------------------|---------|---------|--------|-----------------------|---------------|-----------|
| DESCRIPTION: DETAIL DRAWINGS | | | | | | |
| CUSTOMER: Mega Storage | | | | PROJECT: Bldg 1 and 3 | | |
| LOCATION: Lee's Summit, MO | | | | | | |
| DRN. BY | CK'D BY | DATE | SCALE | REV. | QUOTATION NO. | SHEET NO. |
| JB | DES | 1/21/22 | N.T.S. | 00 | -- | 15 OF 15 |