



April 11, 2022

Clover & Hive  
120 SE 30<sup>th</sup> St.  
Lee's Summit, MO 64082

**RE: Field Issue of header for CS-PF panel for Lot #156 Cobey Creek – 3534 SE Corbin Dr. Lee's Summit, MO 64082 – Permit # PRRES20220073**

This letter addresses the header for CS-PF panel for Lot # 156 Cobey Creek.

- Header extends approx. 9" past window opening on both sides at great room window.

**Recommended modifications:**

- Increase grid nail pattern to 2" at header to braced wall panel overlap.
- Install remaining portions of portal frame per CS-PF detail as shown in image below.

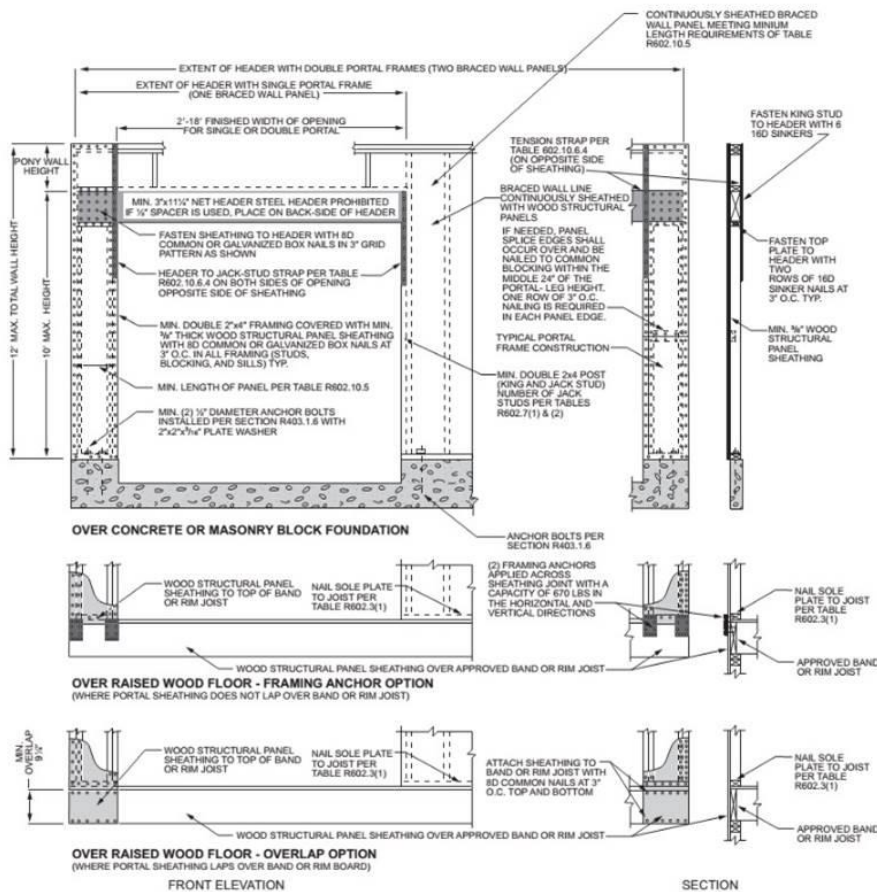


FIGURE R602.10.6.4 METHOD CS-PF—CONTINUOUSLY SHEATHED PORTAL FRAME PANEL CONSTRUCTION

Sincerely,

Bradley Huxol, PE

