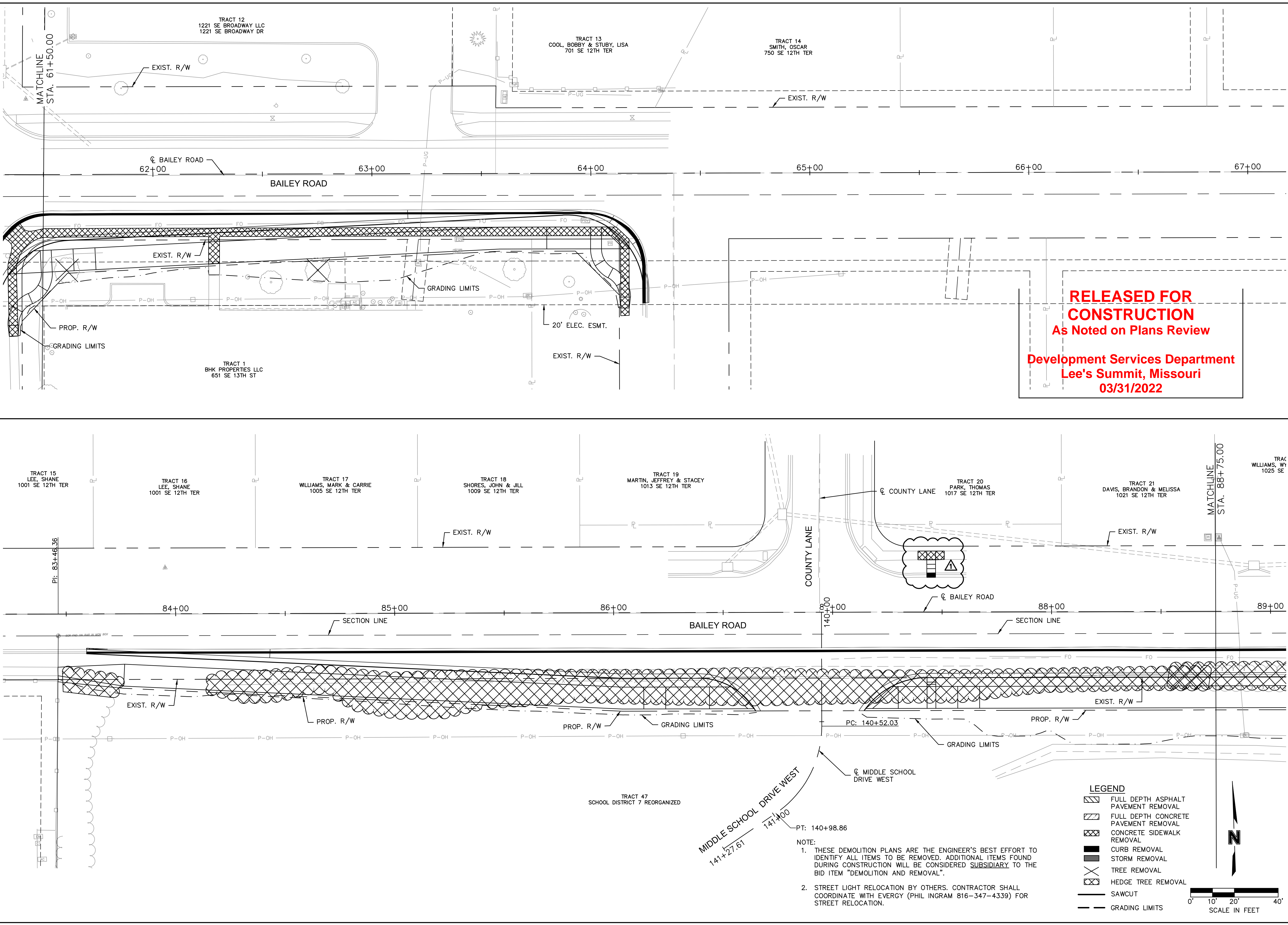
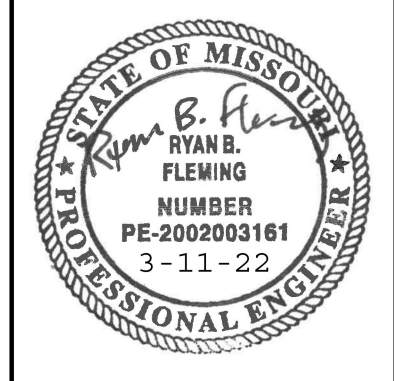


DWG: F:\2020\0001-0500\020-0103\40-Design\AutoCAD\Final Plans\Sheets\ROBR\Lee Summit Plan Set - (Century and Middle School Drives)\DEMOLITION & REMOVALS\T\_DEM01\_0200103.dwg  
 DATE: Mar 11, 2022 8:09am XREFS: T\_PBASE\_0200103 T\_PPATT\_0200103 V\_XBOU\_00103 V\_TOPO\_00103 V\_XTOPO-2\_00103 V\_XBOU-2\_00103 T\_PTBK\_0200103 T\_PP01\_0200103 T\_PSTRM\_0200103  
 USER: rhaller



**RELEASED FOR CONSTRUCTION**  
 As Noted on Plans Review  
 Development Services Department  
 Lee's Summit, Missouri  
 03/31/2022

**olsson**  
 Olsson Engineering - MO State Certificate of Authority #001592  
 7301 West 133rd Street, Suite 200 TEL: 913.381.1170  
 Overland Park, KS 66213-4750 FAX: 913.381.1174 www.ollsson.com



RYAN B. FLEMING  
 MO. NO. PE-2002003161

REV. NO.	DATE	REVISIONS DESCRIPTION	BY
1	03/11/2022	ASI #47	RPH

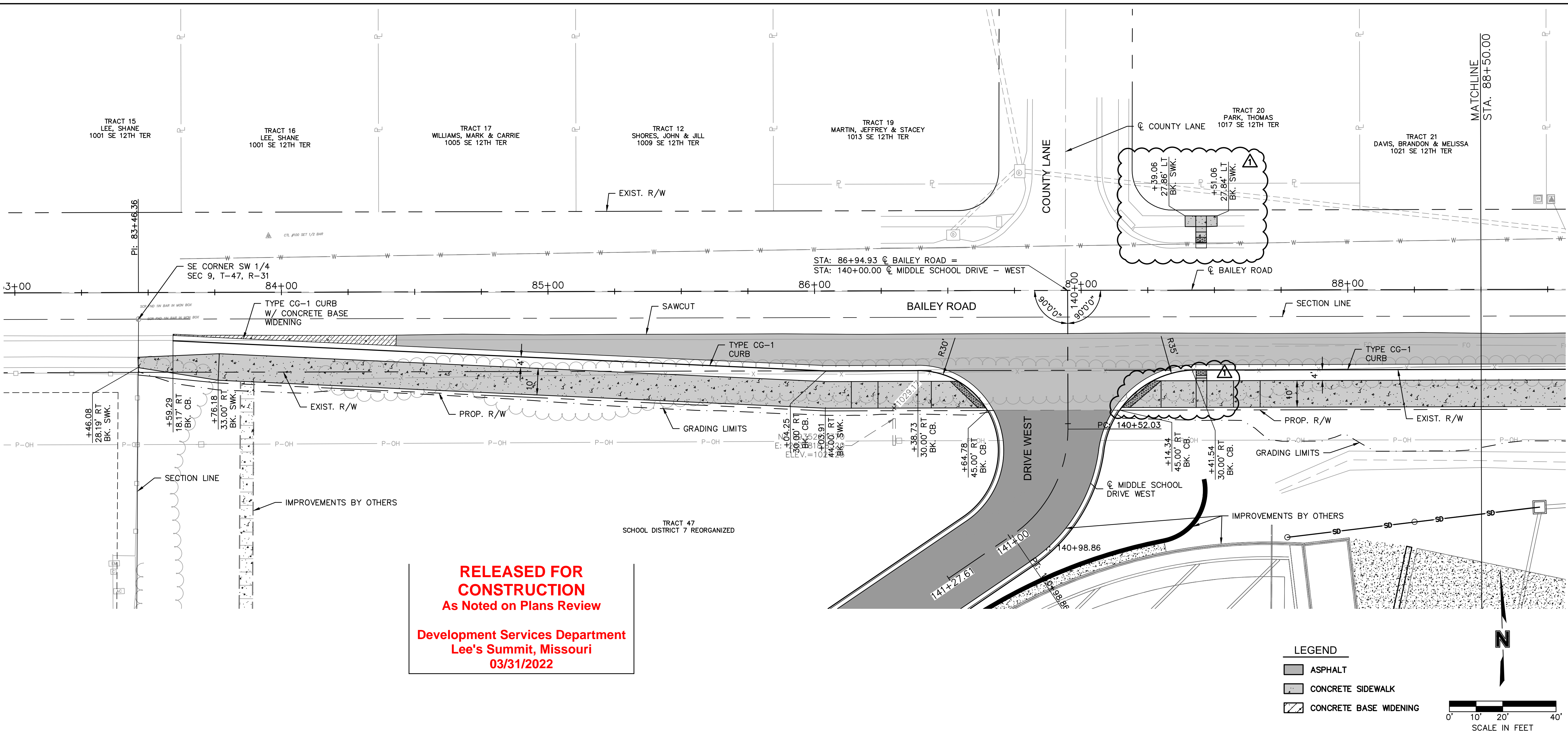
DEMOLITION & REMOVALS  
 BAILLEY ROAD  
 LEE'S SUMMIT MIDDLE SCHOOL #4  
 BAILLEY ROAD PUBLIC IMPROVEMENTS  
 LEE'S SUMMIT, MISSOURI

C.O.A. NO.: 001592  
 DRAWN BY: MLW  
 CHECKED BY: RPH  
 APPROVED BY: RBE  
 QA/QC BY: RBE  
 PROJECT NO.: 020-0103  
 DWG NO.: T\_DEM01\_0200103  
 DATE: 2021-02-01

SHEET 13 OF 101



DWG: F:\2020\0001-0500\020-0103\40-Design\AutoCAD\Final Plans\Sheets\RD\Lee Summit Plan Set - (Century and Middle School Drives)\PLAN & PROFILES\BAILEY ROAD\T\_RPP04\_0200103.dwg  
 DATE: Mar 11, 2022 8:11am XREFS: T\_PBASE\_0200103 V\_XTOPO-2\_00103 V\_XTOPO-2\_00103 V\_TOPO\_00103 C\_PBASE\_0200103 T\_PPAT\_0200103 T\_PPREF\_0200103  
 USER: rholter

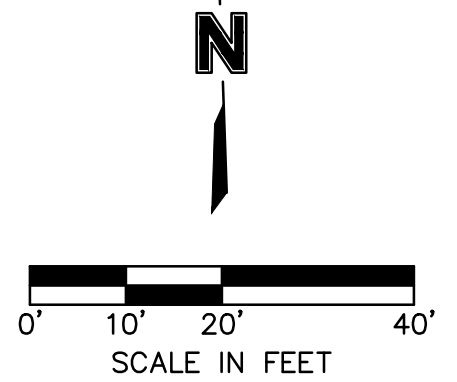


**RELEASED FOR  
CONSTRUCTION**  
As Noted on Plans Review

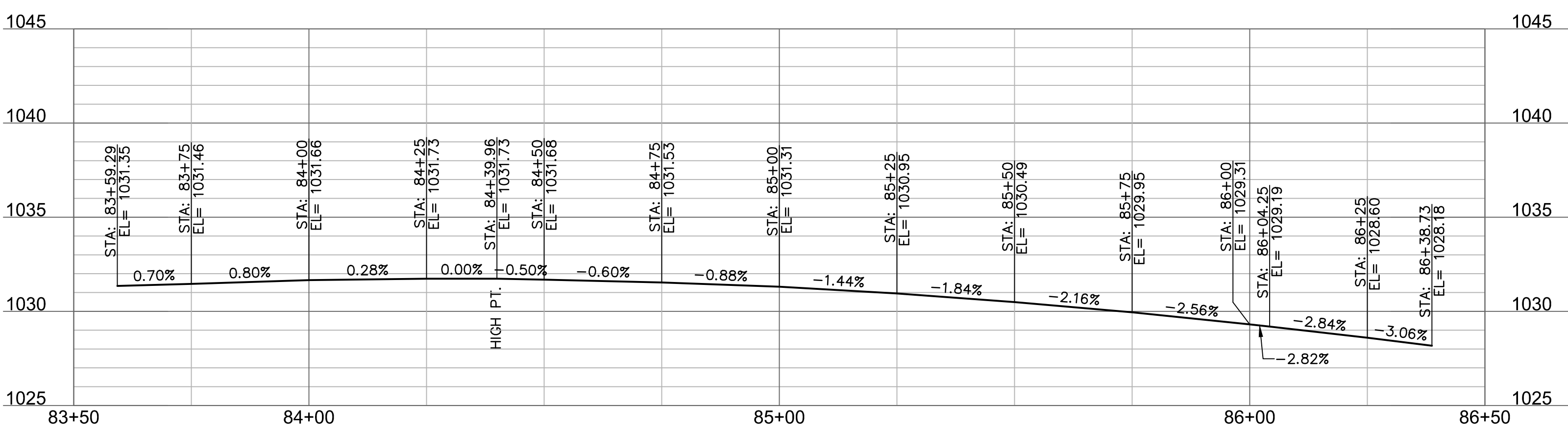
Development Services Department  
Lee's Summit, Missouri  
03/31/2022

**LEGEND**

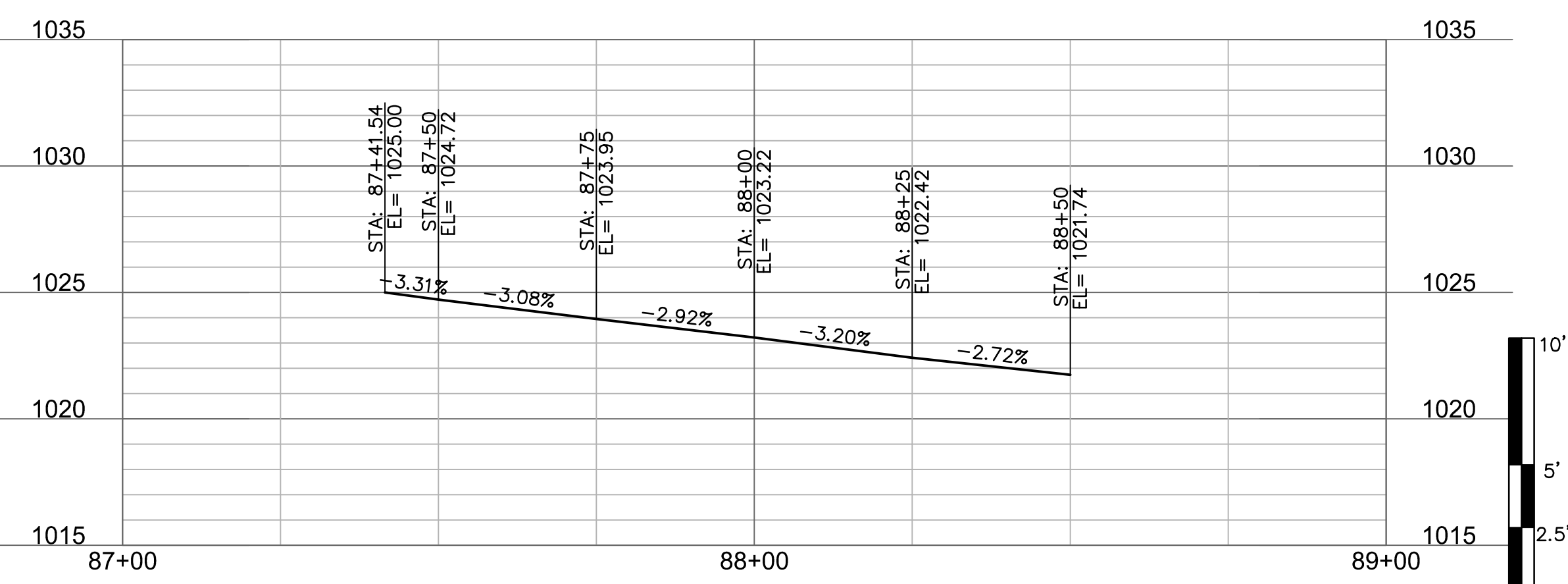
- ASPHALT
- CONCRETE SIDEWALK
- CONCRETE BASE WIDENING

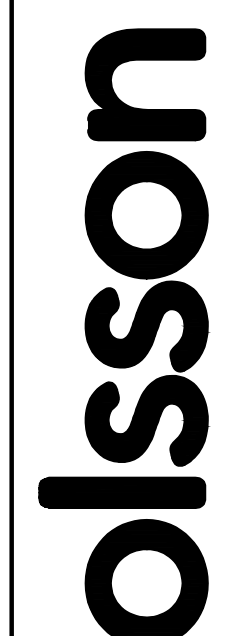


**BAILEY ROAD RIGHT EDGE OF PAVEMENT**

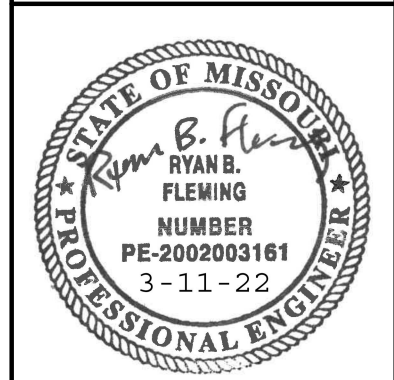


**BAILEY ROAD RIGHT EDGE OF PAVEMENT**





Olsson Engineering - MO State Certificate of Authority #001592  
 7301 West 133rd Street, Suite 200 TEL: 913.381.1170  
 Overland Park, KS 66213-4750 FAX: 913.381.1174  
 www.ollson.com



RYAN B. FLEMING  
 MO. NO. PE-2002003161

REV. NO.	DATE	REVISIONS DESCRIPTION	BY
1	03/11/2022	ASI #47	RPH

2021

**REVISIONS**

PLAN & EDGE OF PAVEMENT PROFILE  
 BAILEY ROAD

LEE'S SUMMIT MIDDLE SCHOOL #4  
 BAILEY ROAD PUBLIC IMPROVEMENTS

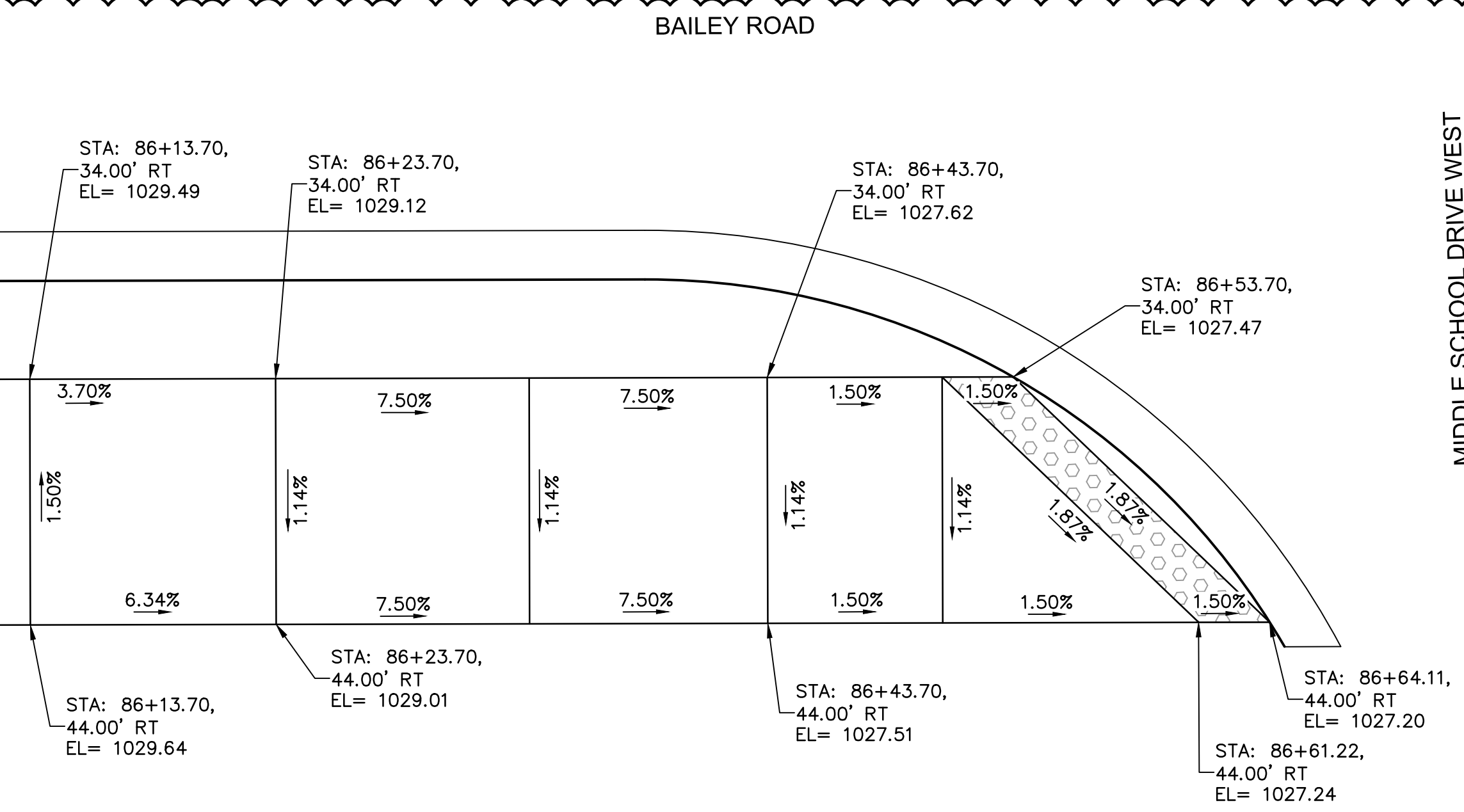
LEE'S SUMMIT, MISSOURI

C.O.A. NO.: 001592  
 DRAWN BY: MLW  
 CHECKED BY: RPH  
 APPROVED BY: RBE  
 QA/QC BY: RBE  
 PROJECT NO.: 020-0103  
 DWG NO.: T\_RPP04\_0200103  
 DATE: 2021-02-01

**SHEET  
27 OF 101**

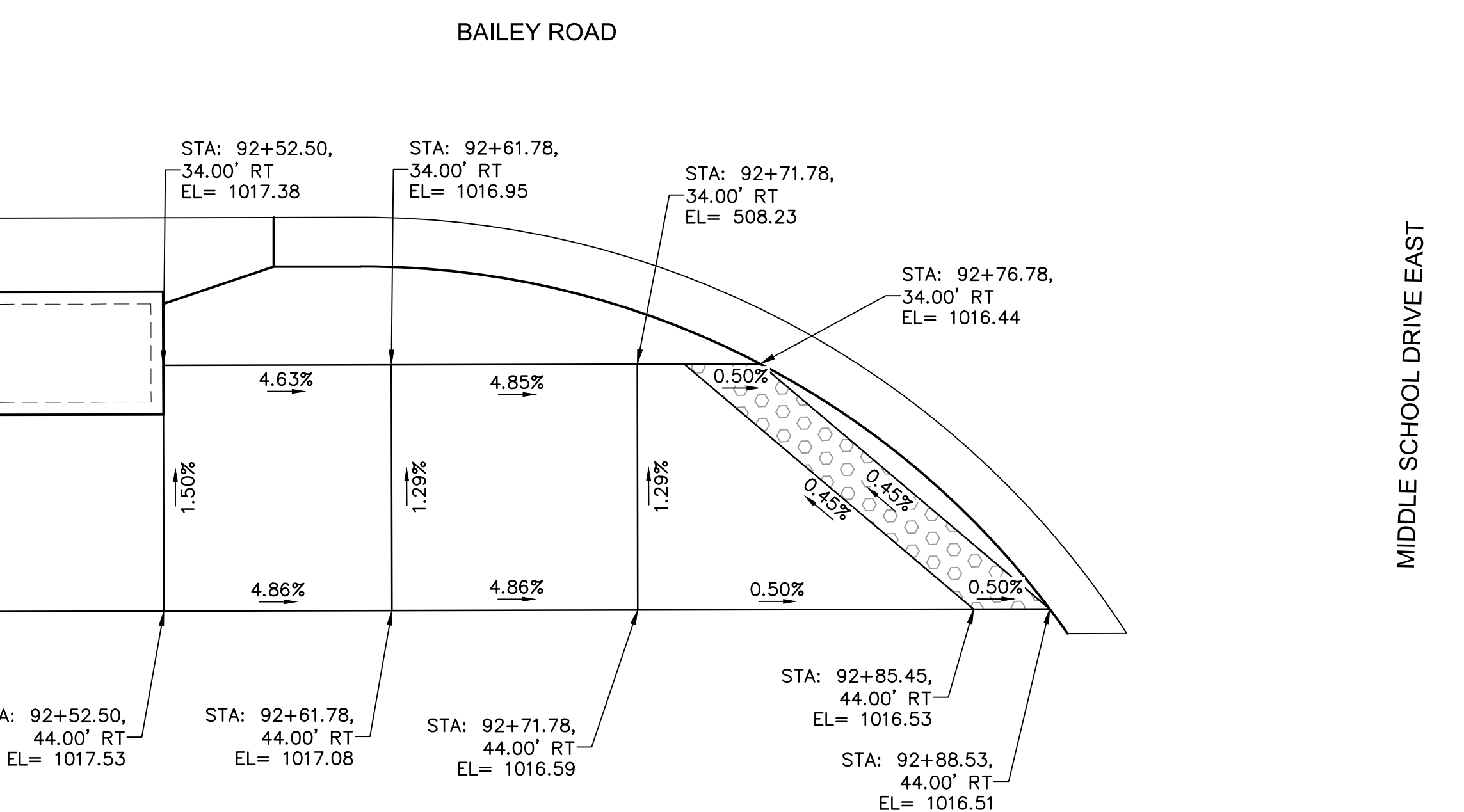


DWG: F:\2020\0001-0500\020-0103\40-Design\AutoCAD\Final Plans\Sheets\RDBR\Lee Summit Plan Set - (Century and Middle School Drives)\SIDEWALK RAMP LAYOUTS\I\_SWK01\_0200103\_LS.dwg  
 DATE: Mar 11, 2022 8:12am XREFS: I\_PBASE\_0200103 I\_PSTRM\_0200103 I\_PTBLK\_0200103 I\_PPATTI\_0200103 I\_V\_TPO\_00103 I\_V\_TPO\_00103 USER: rholler



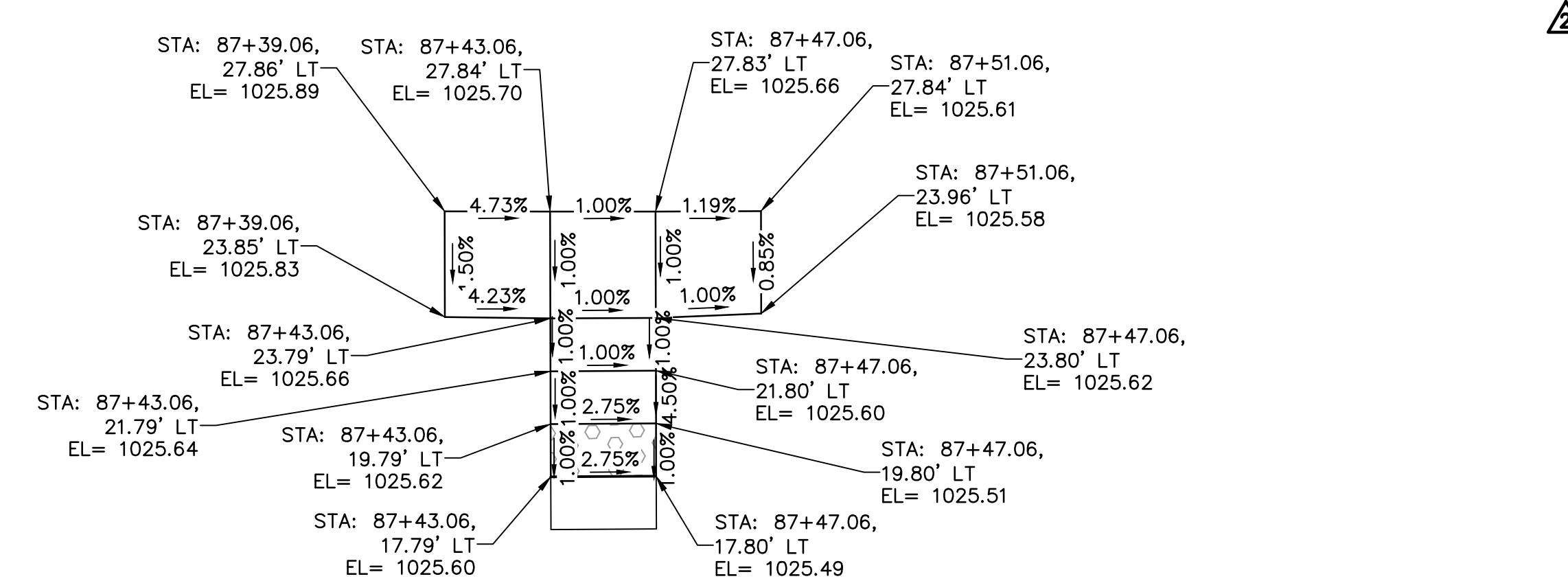
**RELEASED FOR CONSTRUCTION**  
**As Noted on Plans Review**  
 Development Services Department  
 Lee's Summit, Missouri  
 03/31/2022

SW CORNER OF BAILEY ROAD & MIDDLE SCHOOL WEST

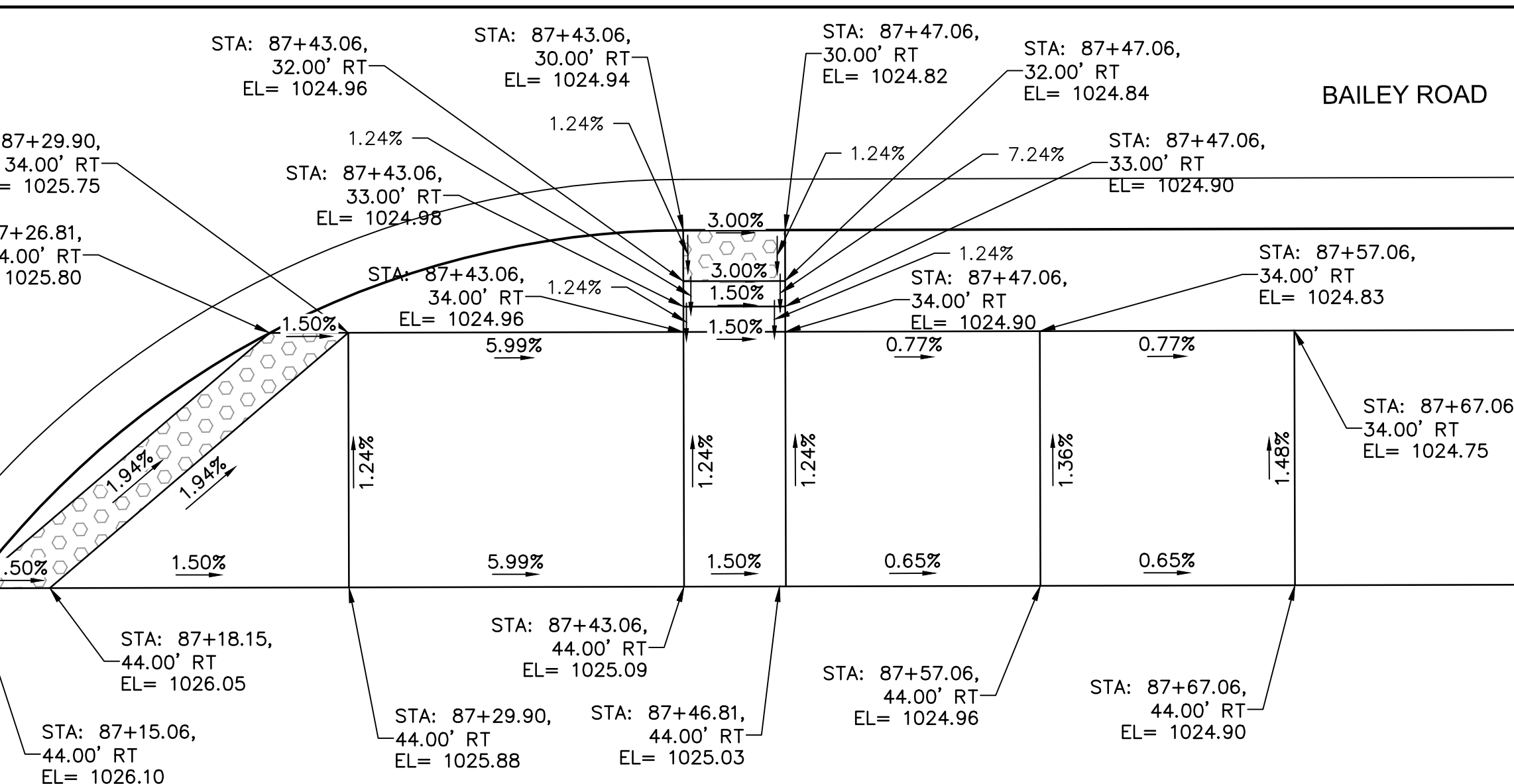


NOTE:  
 STATIONING BASED ON BAILEY ROAD ALIGNMENT

SW CORNER OF BAILEY ROAD & MIDDLE SCHOOL EAST

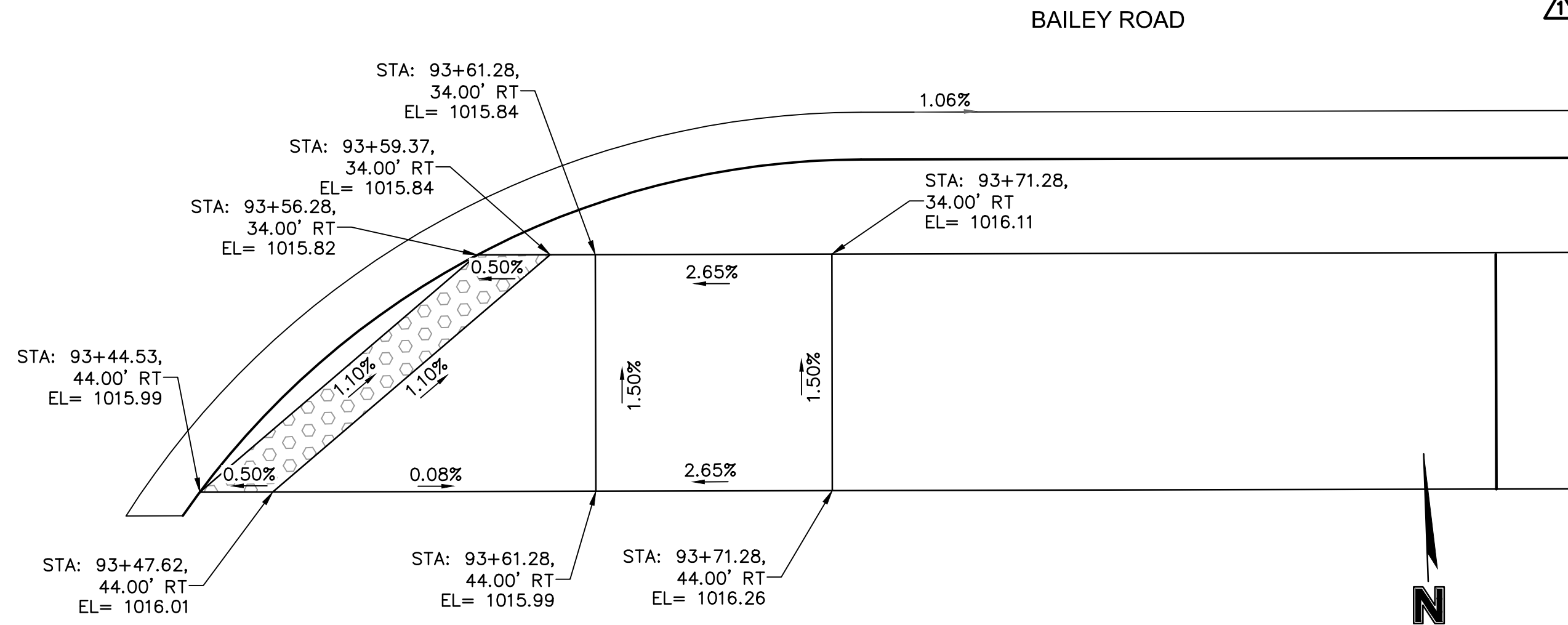


NOTE:  
 STATIONING BASED ON BAILEY ROAD ALIGNMENT



NOTE:  
 STATIONING BASED ON BAILEY ROAD ALIGNMENT

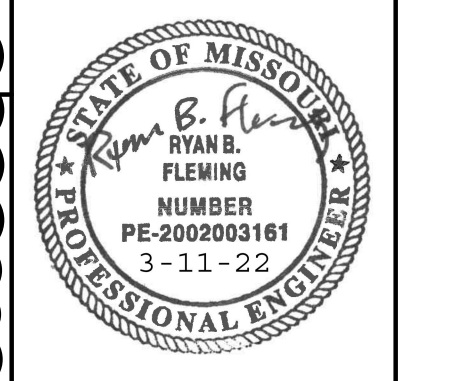
SE CORNER OF BAILEY ROAD & MIDDLE SCHOOL WEST



NOTE:  
 STATIONING BASED ON BAILEY ROAD ALIGNMENT

SE CORNER OF BAILEY ROAD & MIDDLE SCHOOL EAST

**olsson**  
 Olsson Engineering - MO State Certificate of Authority #001592  
 7301 West 133rd Street, Suite 200 TEL: 913.381.1170  
 Overland Park, KS 66213-4760 FAX: 913.381.1174 www.olsson.com



REV. NO.	DATE	DESCRIPTION
1	08/25/2021	ASI #29
2	03/11/2022	ASI #47

**REVISIONS**

BY: RPH  
 RPH  
 RPH

RYAN B. FLEMING  
 MO. NO. PE-2002003161

**SIDEWALK LAYOUTS**

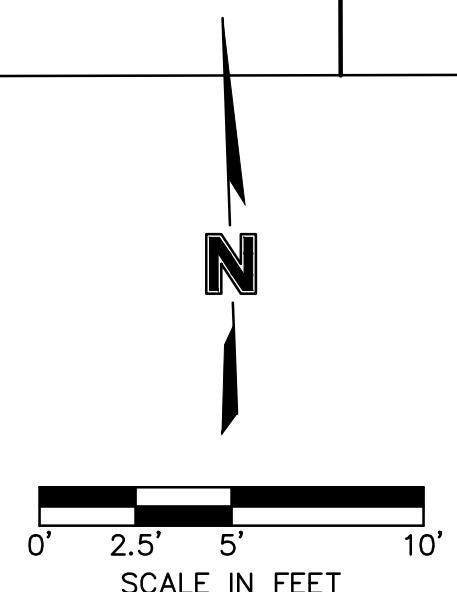
LEE'S SUMMIT MIDDLE SCHOOL #4  
 BAILEY ROAD PUBLIC IMPROVEMENTS

LEE'S SUMMIT, MISSOURI

2021

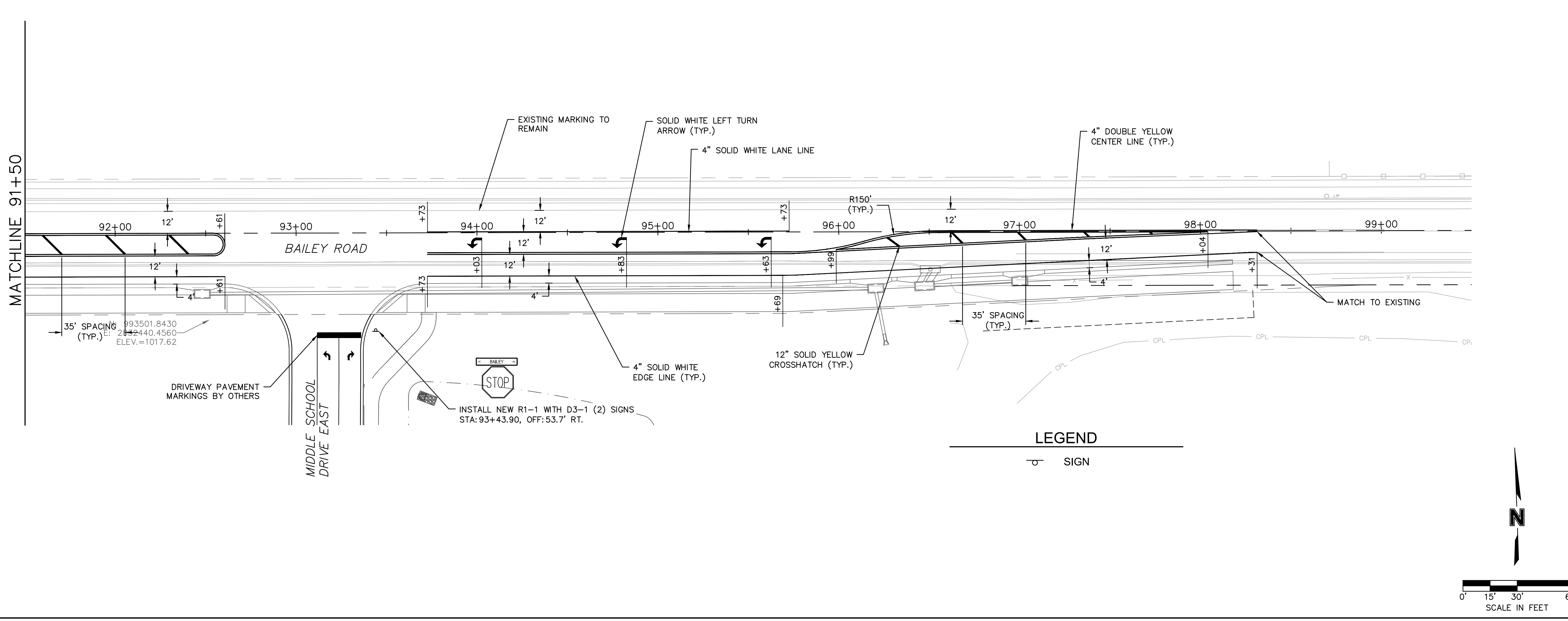
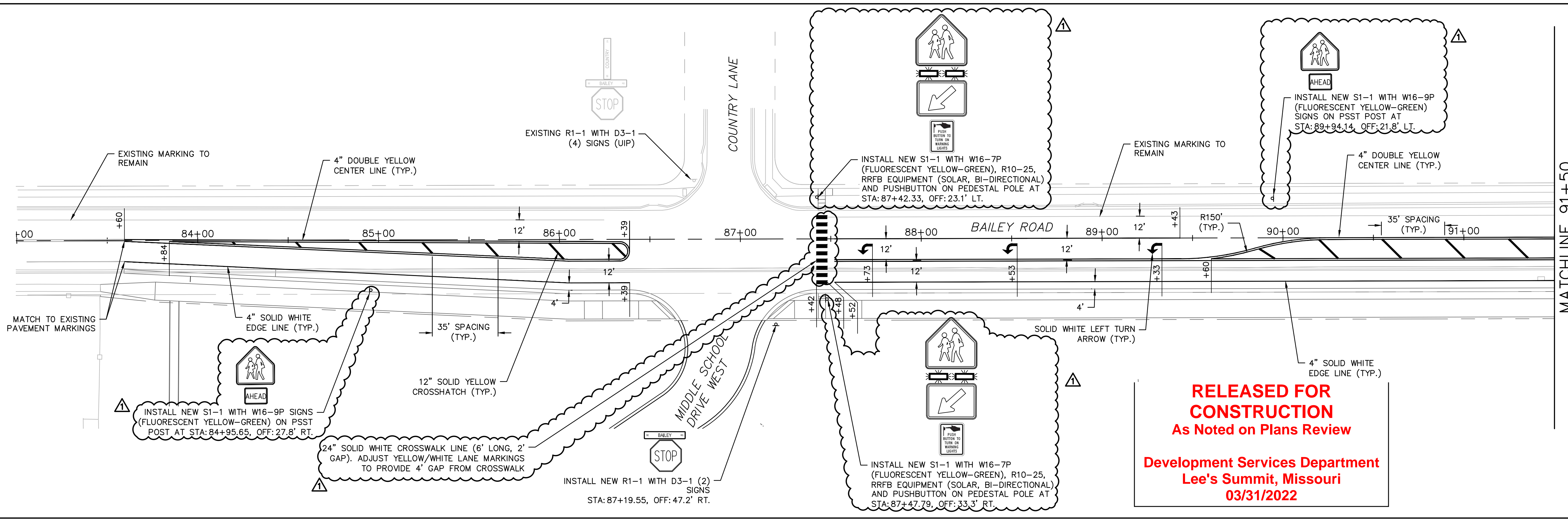
C.O.A. NO.: 001592  
 DRAWN BY: MLW  
 CHECKED BY: RPH  
 APPROVED BY: RBE  
 QA/QC BY: RBE  
 PROJECT NO.: 020-0103  
 DWG NO.: I\_SWK01\_0200103\_LS  
 DATE: 2021-02-01

**SHEET**  
 41 OF 101





DWG: \\lfe-oma-fst\k\_c\_projects\2020\0001-0500\020-0103\40-Design\AutoCAD\Final Plans\Sheets\TTC\PAVEMENT MARKING & SIGNING PLAN\LEE'S SUMMIT SET\F\_SAS\_0200103.dwg  
 DATE: Mar 11, 2022 8:01am XREFS: I\_PSTRM\_0200103 F\_PBASE\_0200103 V\_PBLK\_0200103 V\_XBOU\_2\_00103 V\_XTOPO\_2\_00103 V\_SAS\_BASE\_0200103 T\_PBASE\_0200103 C\_PBASE\_0200103  
 USER: jberry F\_SAS\_0200103 V\_XBOU\_2\_00103 V\_XTOPO\_2\_00103 V\_SAS\_BASE\_0200103 T\_PBASE\_0200103 C\_PBASE\_0200103



**olsson**

Olsson Engineering - MO State Certificate of Authority #001592  
 7301 West 133rd Street, Suite 200 TEL: 913.381.1170  
 Overland Park, KS 66213-4750 FAX: 913.381.1174 www.ollson.com

STATE OF MISSOURI  
 JEFFRIES NUMBER  
 PE 200800008  
 PROFESSIONAL ENGINEER  
 23.11.2324

REV. NO.	DATE	REVISIONS DESCRIPTION	BY
1	3/11/2022	ASI #47	JAB

REVISIONS

PAVEMENT MARKING AND SIGNING PLAN  
 BAILEY ROAD

LEE'S SUMMIT MIDDLE SCHOOL #4  
 PUBLIC ROAD IMPROVEMENTS

LEE'S SUMMIT, MISSOURI

2021

C.O.A. NO.: 001592  
 DRAWN BY: JRC  
 CHECKED BY: JAB  
 APPROVED BY: SLJ  
 QA/QC BY: THE  
 PROJECT NO.: 020-0103  
 DWG NO.: F\_SAS\_0200103  
 DATE: 3/11/2022

SHEET  
 80 OF 101