

EVERSTEAD
SHOP DRAWINGS/SUBMITTAL REVIEW

SUBMITTAL WAS REVIEWED FOR DESIGN CONFORMITY AND GENERAL CONFORMANCE TO CONTRACT DOCUMENTS ONLY. THE CONTRACTOR IS RESPONSIBLE FOR CONFIRMING AND CORRELATING DIMENSIONS AT JOBSITE FOR TOLERANCE, CLEARANCE, QUANTITIES, FABRICATION, COORDINATION OF HIS OR HER WORK WITH OTHER TRADES, AND FULL COMPLIANCE WITH CONTRACT DOCUMENTS.

STATUS:

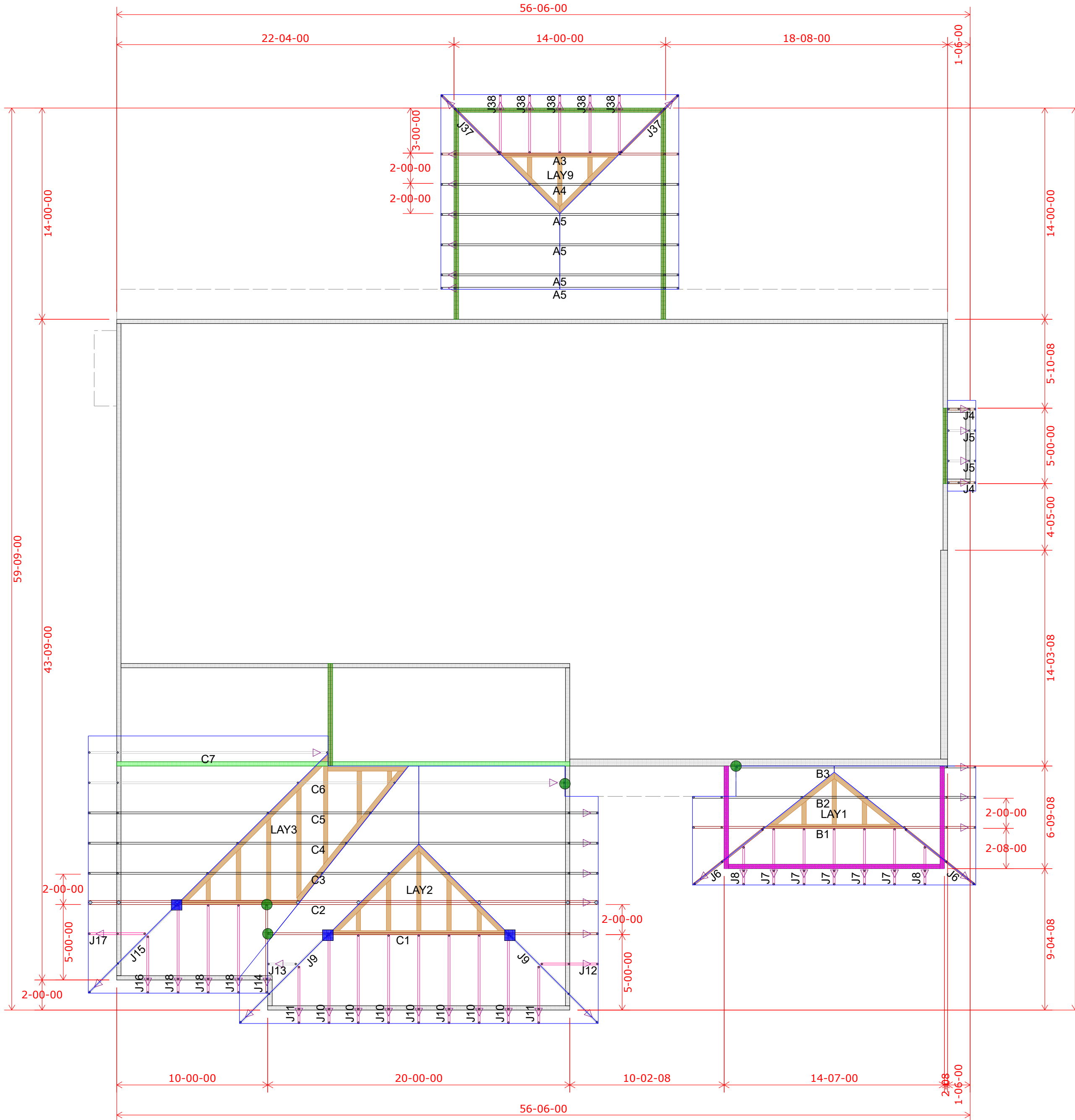
APPROVED

03/08/2022

REVIEWED BY:

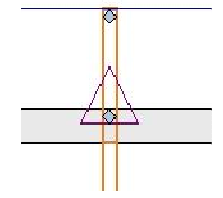
CPD

ENGINEER, EVERSTEAD



HANGER SCHEDULE	Quantity
LUS24	0
LUS26	0
HUS26	9
HHUS26-2	0
HGUS26-2	0
HGUS28-3	0
LTHJA26	0
TJC37	7
TJC57	0
HTS20	0

Triangle denotes the left end of the Truss as it appears on the Engineered Drawings provided.



Unless otherwise specified by Engineer Of Record, Wheeler Lumber, LLC recommends an uplift connection at each bearing point per the following:

# of Uplift	Connector
0 - 495:	(1) H2.5A
495 - 990:	(2) H2.5A
990 - 1245:	(1) HTS20

Installation per Simpson Strong-Tie guidelines.

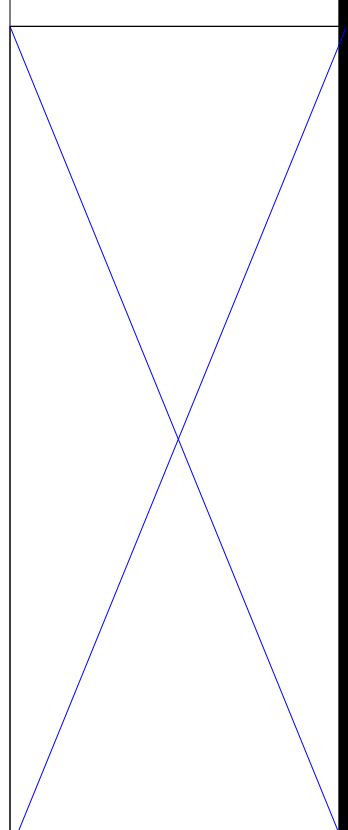
For Reactions greater than 1245#, refer to EOR.

Wall Heights:
1st Floor = 9-1-2 U.N.O.
2nd Floor = 8-1-2 U.N.O.

Wall Heights
9-01-02
10-01-02

Customer	Job Name	Job Site Address	City, State	Designer	Date
Summit Homes	Lot 111 Reserve at Stoney Creek	1904 SW Hightown Dr	Lee's Summit, MO	Chuck Haspels (785) 746-4266	Job # B220019

Wheeler Lumber
1959 Old Hwy 50 NE
Waverly, KS 66871



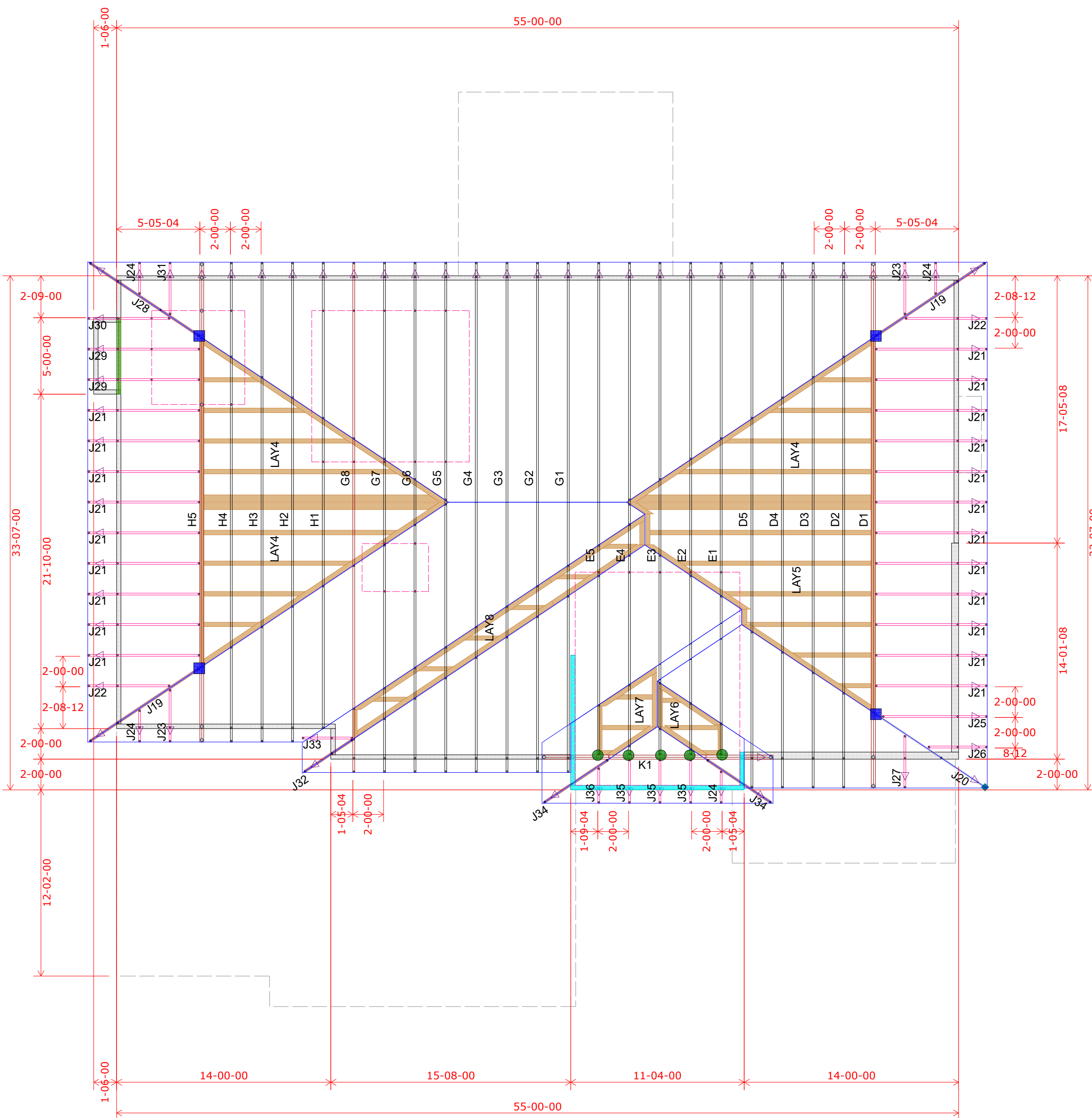
1st Floor Truss Layout
Scale: 3/16" = 1'

RELEASE FOR CONSTRUCTION
AS NOTED ON PLANS REVIEW
Development Services
LEE'S SUMMIT, MISSOURI

EVERSTEAD
SHOP DRAWINGS/SUBMITTAL REVIEW

SUBMITTAL WAS REVIEWED FOR DESIGN CONFORMITY AND GENERAL CONFORMANCE TO CONTRACT DOCUMENTS ONLY. THE CONTRACTOR IS RESPONSIBLE FOR CONFIRMING AND CORRELATING DIMENSIONS AT JOBSITE FOR TOLERANCE, CLEARANCE, QUANTITIES, FABRICATION, COORDINATION OF HIS OR HER WORK WITH OTHER TRADES, AND FULL COMPLIANCE WITH CONTRACT DOCUMENTS.

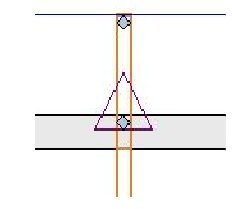
STATUS:
APPROVED
03/08/2022
REVIEWED BY:
CPD
ENGINEER, EVERSTEAD



2nd Floor Truss Layout
Scale: 3/16" = 1'

HANGER SCHEDULE	Quantity
● LUS24	0
● LUS26	0
● HUS26	9
▲ HHUS26-2	0
▲ HGUS26-2	0
▲ HGUS28-3	0
■ LTHJA26	0
■ TJC37	7
■ TJC57	0
▲ HTS20	0

Triangle denotes the left end of the Truss as it appears on the Engineered Drawings provided.



Unless otherwise specified by Engineer Of Record, Wheeler Lumber, LLC recommends an uplift connection at each bearing point per the following:

# of Uplift	Connector
0 - 495:	(1) H2.5A
495 - 990:	(2) H2.5A
990 - 1245:	(1) HTS20

Installation per Simpson Strong-Tie guidelines.
For Reactions greater than 1245#, refer to EOR.

Wall Heights:
1st Floor = 9-1-2 U.N.O.
2nd Floor = 8-1-2 U.N.O.

Wall Heights	
9-01-02	
10-01-02	

Customer		Job Name		Job Site Address		City, State		Designer		Date	
Summit Homes		Lot 111 Reserve at Stoney Creek		1904 SW Hightown Dr		Lee's Summit MO		Chuck Haspels (785) 746-4266		Job # B220019	
Job Name		Job Site Address		City, State		Designer		Date		1/25/2022	

Wheeler Lumber
1959 Old Hwy 50 NE
Waverly, KS 66871

RELEASE FOR CONSTRUCTION
AS NOTED ON PLANS REVIEW
Development Services
LEE'S SUMMIT, MISSOURI