

DECK PIER SCHEDULE

- △ MIN. 6X8 TRTD/CDR POST ON 12" CONC PIER WITH USP PAU 66 BASE OR = (1177# MAX)
- △ MIN. 6X8 TRTD/CDR POST ON 16" CONC PIER WITH USP PAU 66 BASE OR = (2050# MAX)
- △ MIN. 6X8 TRTD/CDR POST ON 18" CONC PIER WITH USP PAU 66 BASE OR = (2649# MAX)
- △ MIN. 6X8 TRTD/CDR POST ON 24" CONC PIER WITH USP PAU 66 BASE OR = (4710# MAX)

PIERS TO TERMINATE ON ORIGINAL SOIL OF 1500 PSF MINIMUM BEARING.
PIERS TO TERMINATE AT A POINT 36" MINIMUM BELOW FINISH GRADE.
POST ARE NOT TO EXCEED AN UNBRACED LENGTH OF 12' WITHOUT CONTACTING HD ENGINEERING FOR GUIDANCE.

COLUMN PAD SCHEDULE

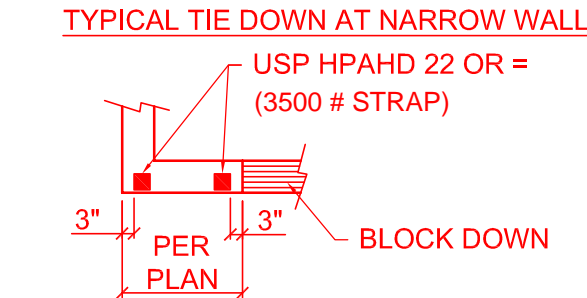
A	3" SCH. 40 STL. COL. ON 30"x30"x12" CONC. PAD W/ (5) #4 BARS E.W. (9.4K MAX.)
B	3" SCH. 40 STL. COL. ON 36"x36"x12" CONC. PAD W/ (6) #4 BARS E.W. (13.5K MAX.)
C	3 1/2" SCH. 40 STL. COL. ON 42"x42"x14" CONC. PAD W/ (7) #4 BARS E.W. (18.4K MAX.)
D	3 1/2" SCH. 40 STL. COL. ON 48"x48"x16" CONC. PAD W/ (8) #4 BARS E.W. (24K MAX.)
E	3 1/2" SCH. 40 STL. COL. ON 54"x54"x18" CONC. PAD W/ (9) #4 BARS E.W. (30.4K MAX.)
F	3 1/2" SCH. 40 STL. COL. ON 60"x60"x18" CONC. PAD W/ (10) #4 BARS E.W. (37.5K MAX.)

NOTES:

- COLUMN AND PIER PAD SIZES SHOWN ARE FOR MAX. COLUMN HEIGHT OF 10'-0" TALL.
- COLUMN AND PIER PAD SIZES SHOWN ARE BASED ON AN ASSUMED 1500 PSF. THIS IS THE CAPACITY REQUIRED BY AHJ. UNDERLINED GENERAL NOTES ON S-1.0 FOR MORE DETAILS.
- ALL STEEL COLUMNS SHALL BE ISOLATED FROM SLABS WITH APPROVED ISOLATION DEVICE OR JOINT.

GENERAL NOTES:

- WINDOW SHALL HAVE FALL PROTECTION PER IRC 312.2.4
- HOUSE WILL BE PROVIDED WITH A "UPPER" GROUND PER IRC SECTION 3608.1.5
- OVERHEAD GARAGE DOORS MUST MEET DASHA REQUIREMENTS SEE DETAIL SHEET S-1.0
- ALL HEADERS NOT LABELED SHALL BE MIN (2) #2-2X10 DFL
- DBL. ALL JST UNDER ISLAND
- SOILS IN THIS AREA COMMONLY HAVE A VERY HIGH SHRINK SWELL CAPACITY. OUR FIRM RECOMMENDS ALL SITES BE EVALUATED BY A GEOTECHNICAL FIRM PRIOR TO PLACEMENT OF FOUNDATIONS
- PROVIDE CARBON MONOXIDE AND SMOKE DETECTORS PER IRC REQUIREMENTS
- ANY PORTION OF THESE PRINTS ISSUED WITHOUT A MIN. OF S-1.0
- S-1.0 SHALL NOT BE CONSIDERED A COMPLETE SET OF CONSTRUCTION DOCUMENTS
- ICE AND WATER SHIELD AS REQUIRED PER IRC

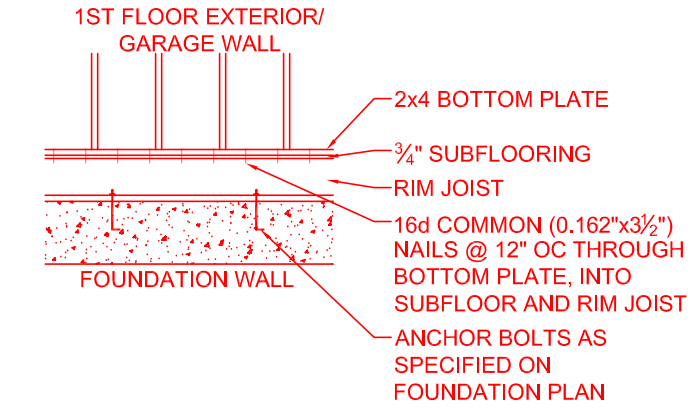


BRACED WALLS:
SEE CALCULATIONS ON SHEET S-2.0, PER ASC7-10 REQUIREMENTS AS ALLOWED BY IRC 2016 R301.2.1

ALL EXTERIOR WALLS SHALL BE SHEATHED PER ANY ONE OF THE FOLLOWING OPTIONS:

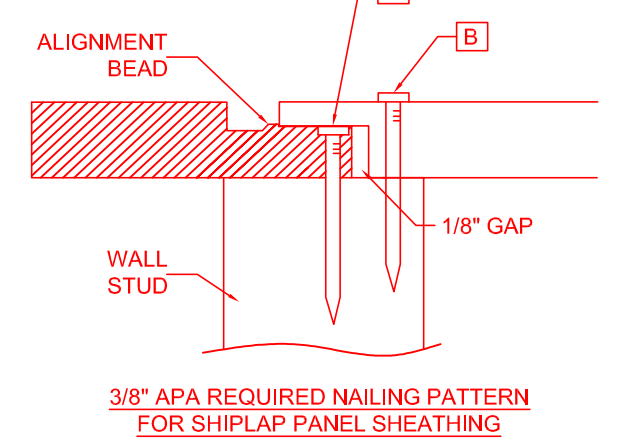
- 7/16" APA-RATED PLYWOOD/OSB WITH 8d NAILS @ 6" O.C. AT EDGES AND @ 12" O.C. IN THE FIELD
- 7/16" SHIPLAP PANEL SHEATHING (I.E. LP SMARTSIDE OR EQUIVALENT) WITH 8d NAILS @ 6" O.C. AT EDGES AND @ 12" O.C. IN THE FIELD
- 3/8" SHIPLAP PANEL SHEATHING (I.E. LP SMARTSIDE OR EQUIVALENT) WITH 8d NAILS @ 4" O.C. AT EDGES AND @ 12" O.C. IN THE FIELD

INTERIOR BRACED WALL LOCATIONS ONLY SHOWN WHEN REQUIRED BY ADDITIONAL BRACING SECTION OF CALCULATIONS ON SHEET S-2.0



FOUNDATION ANCHORING NOTES:

- MIN. 1/2" ANCHOR BOLTS SHALL BE INSTALLED @ 36" O.C. MAX AND WITHIN 6"-12" FROM THE END OF EACH SECTION OF SILL PLATE ALONG ENTIRE PERIMETER OF FOUNDATION



NAILING WITH SPACING AS SPECIFIED PER PLAN. FOR EXAMPLE, IF REQUIRED SPACING IS 4" O.C., BOTTOM LAP SHALL FIRST BE NAILED AT 4" O.C. (NAIL "A"), THEN FULL DEPTH SECTION OF OVERLAP PANEL SHALL BE NAILED @ 4" O.C. (NAIL "B")

STATE OF MISSOURI
CHRIS SAATHOFF
REGISTERED PROFESSIONAL ENGINEER
NO. 20080001865
10/07/2021

STRUCTURAL REVIEW
HDI#: 42609

HD ENGINEERING & DESIGN, INC.
1606 W. 27th STREET
SPRINGFIELD, MO 65814
WWW.HDENGINEERS.COM
913.831.2222
SERVICE@HDENGINEERS.COM

THIS DOCUMENT CONTAINS COPYRIGHTED MATERIAL AND CONFIDENTIAL INFORMATION BELONGING TO HD ENGINEERING. UNAUTHORIZED USE, DISCLOSURE, REPRODUCTION OR DISTRIBUTION OF ANY OF THE INFORMATION CONTAINED HEREIN MAY RESULT IN LIABILITY UNDER APPLICABLE LAW.

LOWER FLOOR PLAN
SCALE: 1/4"=1'-0" FUTURE FINISH= 960 SF

ADAPT FDTN WALL HTS FOR SITE TOPO

- ARCHITECTURAL NOTES:**
- WALL NOTE: SEE ELEVATIONS FOR EXTERIOR BRG. HEIGHTS
 - DOOR NOTE: 6/0 DOORS @ MAIN LEVEL & 6/8 DOORS @ UPPER & LOWER LEVEL
 - WINDOW NOTES: SEE ELEVATIONS FOR HDR. HTS
 - ALL TRADES TO REFER TO STRUCTURAL SHEETS IN THIS SET FOR ALL STRUCTURAL ITEMS ON THIS PROJECT.
 - IF THERE IS ANY CONFLICT BETWEEN ARCH SHEETS & ENG SHEETS, FOLLOW ENGINEERING SHEETS FOR ENGINEERING ITEMS AND/OR CONTACT ARCHITECT FOR CLARIFICATION.

RELEASE FOR CONSTRUCTION AS NOTED ON PLANS REVIEW Development Services LEE'S SUMMIT, MISSOURI