

COOPER'S HAWK WINERY & RESTAURANT  
LEE'S SUMMIT, MO  
  
SIGNAGE PACKAGE



Elevate Sign Group  
1120 N. Ridge Ave.  
Lombard, IL 60148  
T: 630-656-1085  
[www.elevatesigngroup.com](http://www.elevatesigngroup.com)

SUBMITTED TO:

Cooper's Hawk  
Winery & Restaurant  
  
Lee's Summit, MO

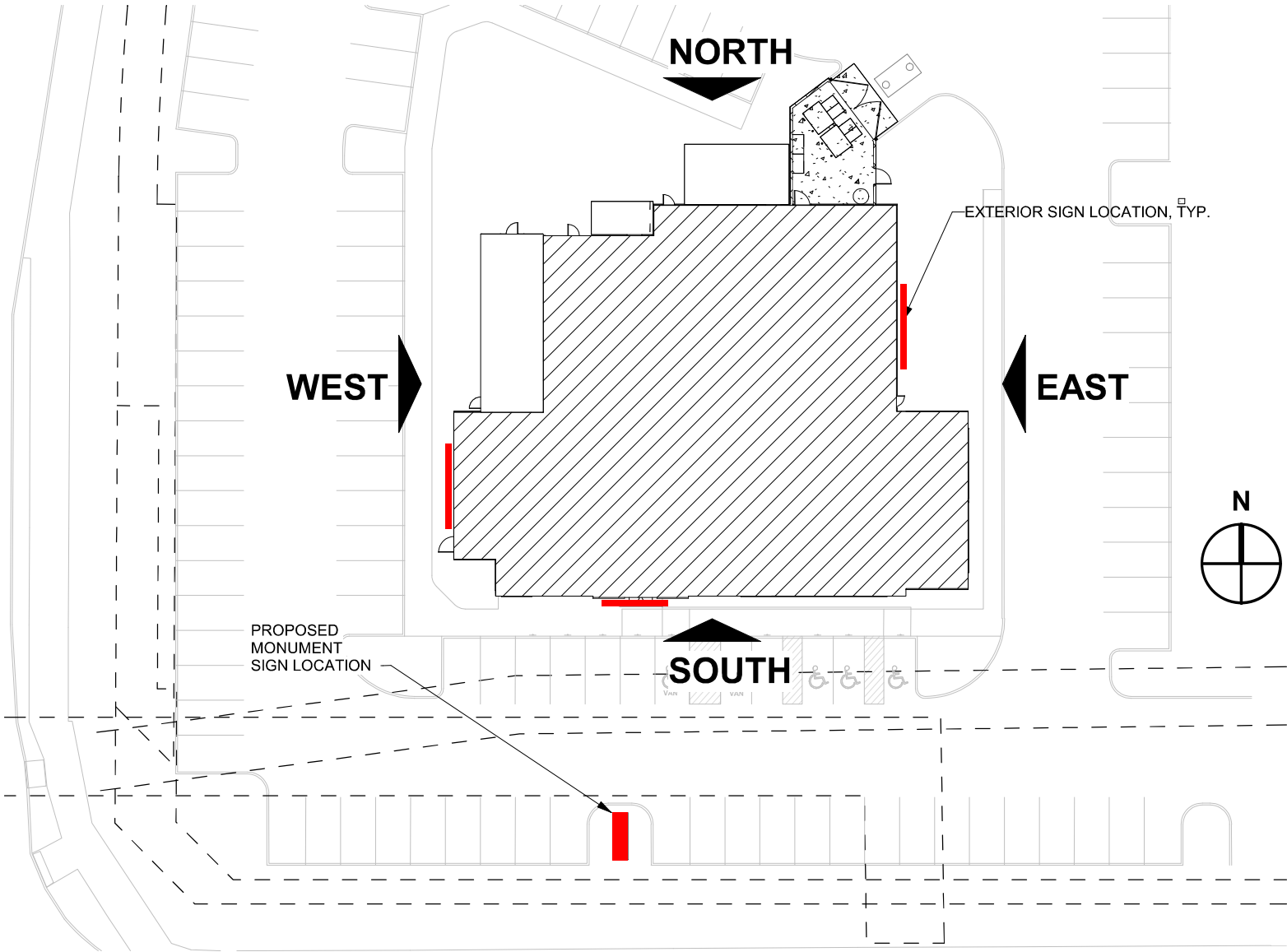
PROJECT:

10-06-2021

DATE:



COOPER'S HAWK WINERY & RESTAURANT - LEE'S SUMMIT, MO  
SIGNAGE SITE PLAN



Elevate Sign Group  
1120 N. Ridge Ave.  
Lombard, IL 60148  
T: 630-656-1085  
www.elevatesigngroup.com

SUBMITTED TO:

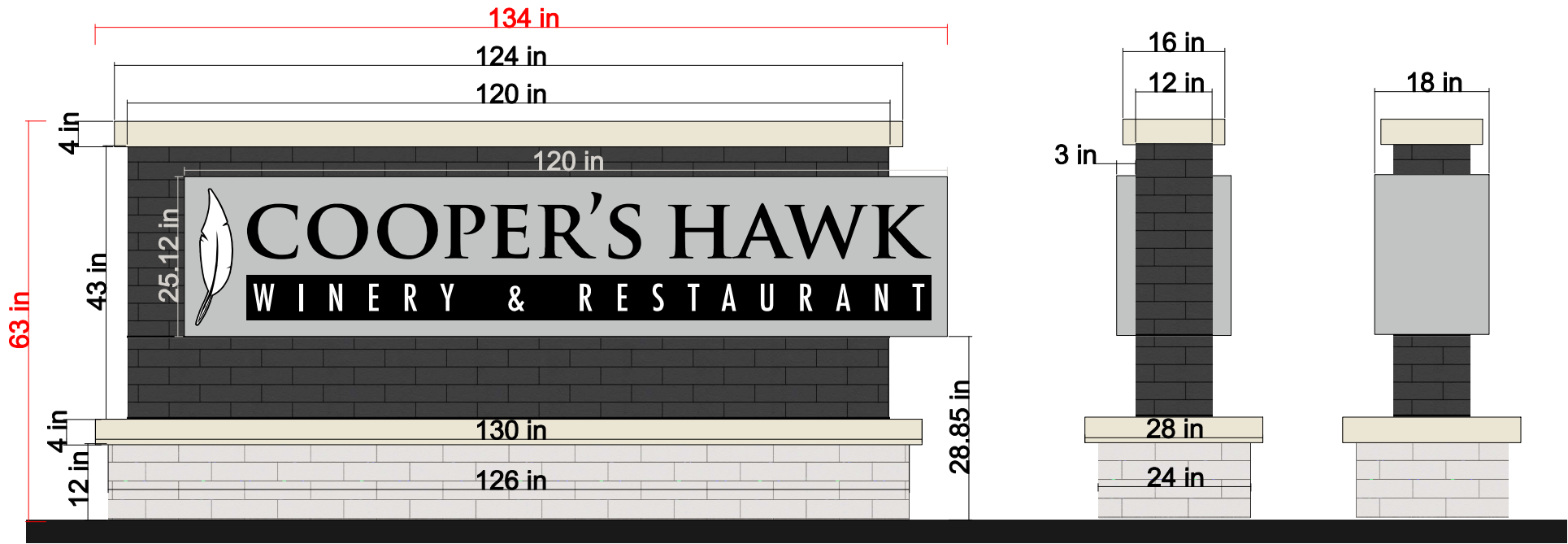
Cooper's Hawk  
Winery & Restaurant  
  
Lee's Summit, MO

PROJECT:

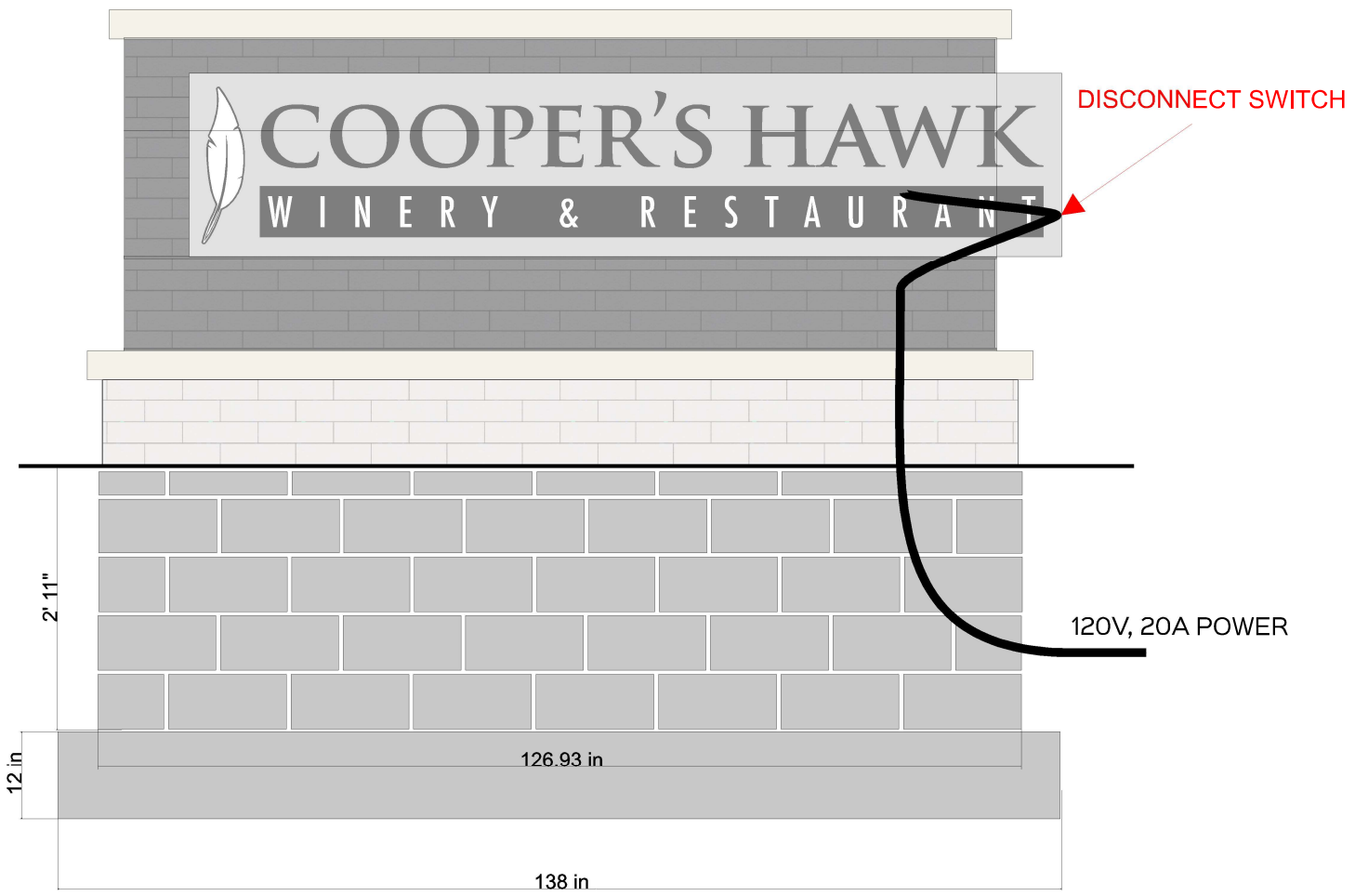
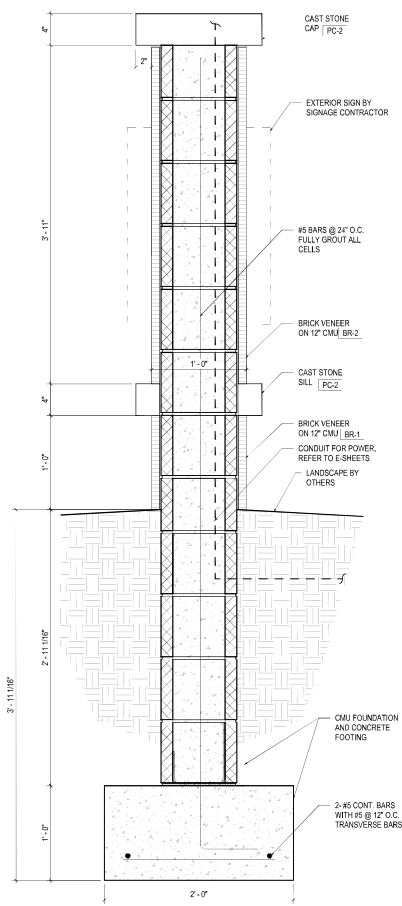
LS - SITE PLAN

DATE:





2-SIDED MONUMENT SIGN  
 ROUTED ALUMINUM FACES PAINTED AKZO 498D2 (GRAY) AND BLACK  
 SIGN WRAPS AROUND ONE END OF THE BRICK WALL  
 COOPER'S HAWK: 3/4" PUSH THROUGH ACRYLIC LETTERS WITH BLACK VINYL FACES,  
 AND RED TRANSLUCENT VINYL ON BACK SURFACE  
 FEATHER: WHITE 1/2" PUSH THROUGH ACRYLIC WITH BLACK VINYL FOR SPINE  
 WINERY & RESTAURANT: ROUTED ALUMINUM FACE (PAINTED BLACK) WITH  
 1/2" WHITE ACRYLIC PUSH THROUGH LETTERS  
 WHITE INTERNAL LEDs  
 BRICK BASE: ARRISCRAFT GEORGIA ARCHITECTURAL LINEAR, WHITE PEARL  
 4" CAST STONE SILL AND CAP  
 BRICK WALL: ARRISCRAFT ARCHITECTURAL LINEAR SERIES, OBSIDIAN



Elevate Sign Group  
1120 N. Ridge Ave.  
Lombard, IL 60148  
T: 630-656-1085  
www.elevatesigngroup.com

SUBMITTED TO:

Cooper's Hawk  
Winery & Restaurant  
  
Lee's Summit, MO

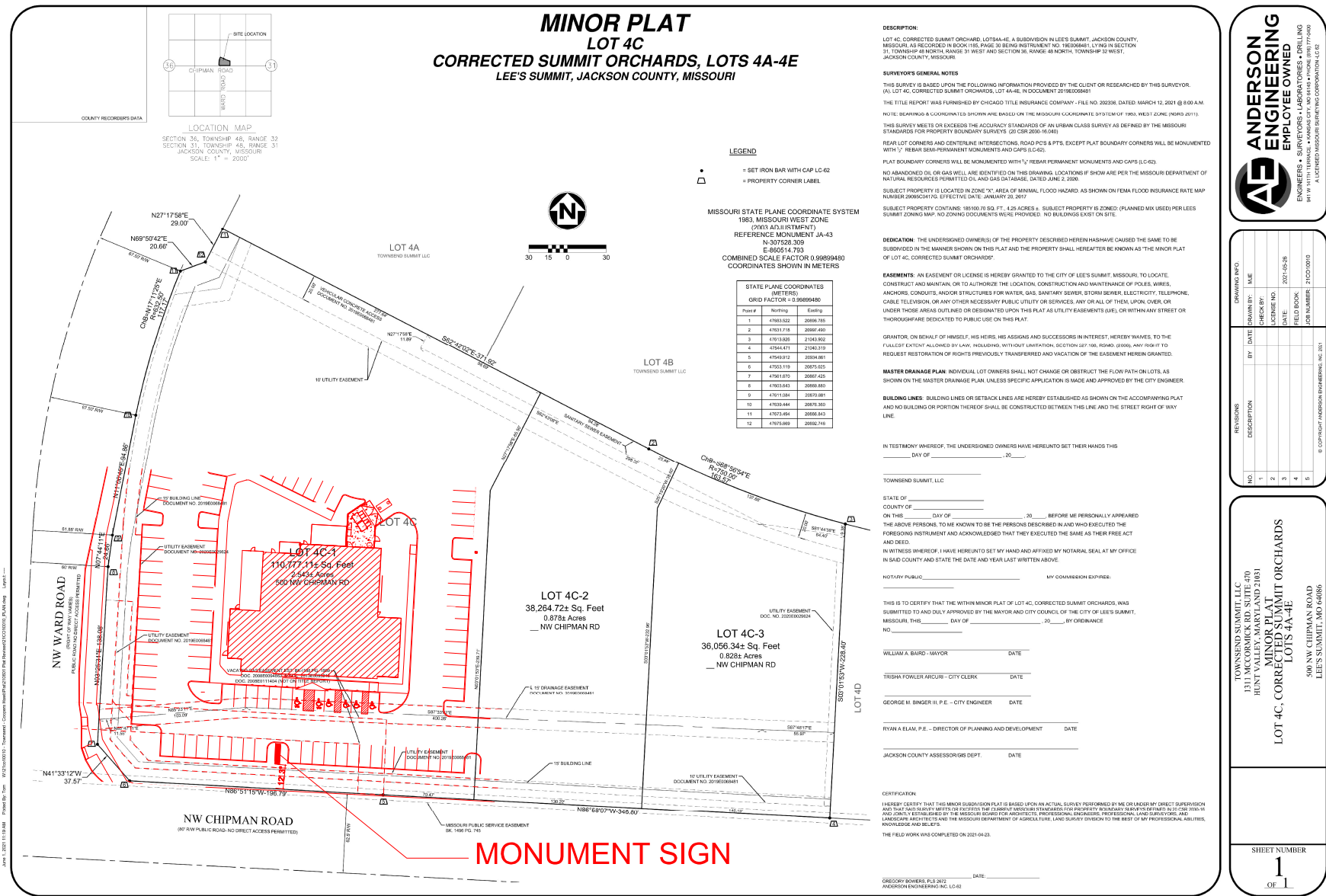
PROJECT:

LS - MONUMENT

DATE:



COOPER'S HAWK WINERY & RESTAURANT - LEE'S SUMMIT, MO  
MONUMENT SIGN SET BACK



**ANDERSON ENGINEERING**  
EMPLOYEE OWNED  
ENGINEERS • SURVEYORS • LABORATORIES • DRILLING  
814 W. 11TH TERRACE • KANSAS CITY, MO 64105 • PHONE (816) 777-0900  
A LICENSED MISSOURI SURVEYING CORPORATION, L.L.C.

**TOWNSEND SUMMIT, LLC**  
1311 MCCORMICK RD. SUITE 470  
HUNT VALLEY, MARYLAND 21151  
LOT 4C, CORRECTED SUMMIT ORCHARDS  
LOTS 4A-4E  
500 NW CHIPMAN ROAD  
LEE'S SUMMIT, MO 64086

**SHEET NUMBER**  
1  
OF 1



Elevate Sign Group  
1120 N. Ridge Ave.  
Lombard, IL 60148  
T: 630-656-1085  
www.elevatesigngroup.com

SUBMITTED TO:

Cooper's Hawk  
Winery & Restaurant  
Lee's Summit, MO

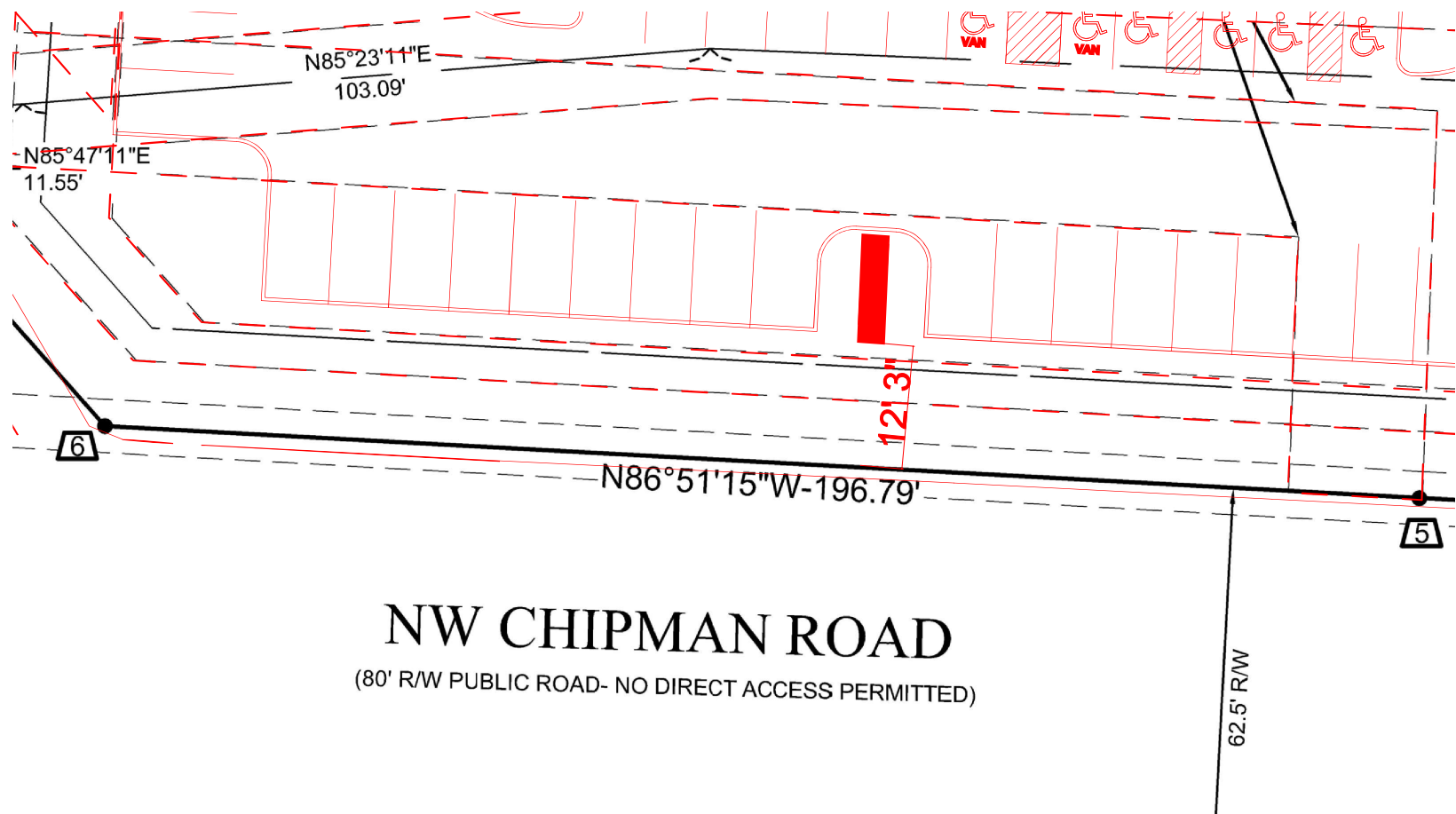
PROJECT:

LS - MONUMENT SIGN

DATE:



COOPER'S HAWK WINERY & RESTAURANT - LEE'S SUMMIT, MO  
MONUMENT SIGN SET BACK



NW CHIPMAN ROAD  
(80' R/W PUBLIC ROAD- NO DIRECT ACCESS PERMITTED)

62.5' R/W



Elevate Sign Group  
1120 N. Ridge Ave.  
Lombard, IL 60148  
T: 630-656-1085  
www.elevatesigngroup.com

SUBMITTED TO:

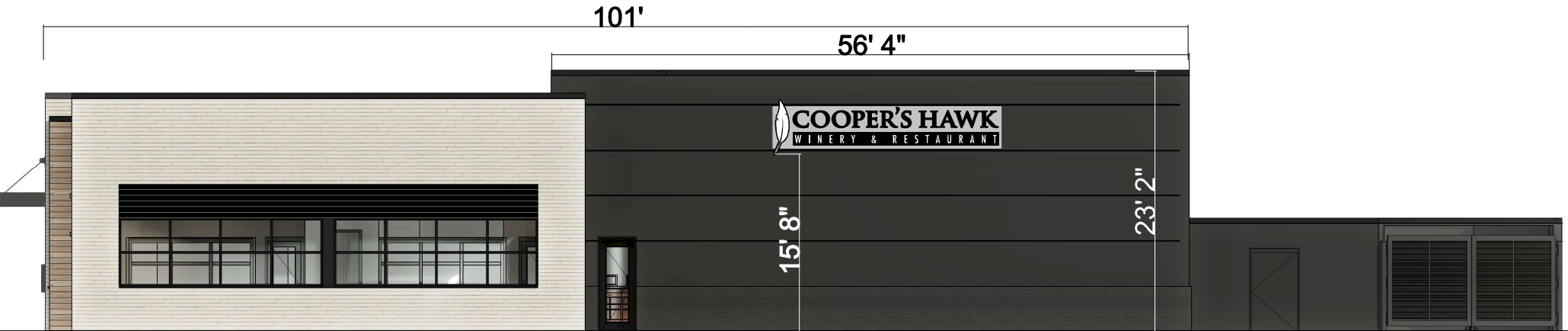
Cooper's Hawk  
Winery & Restaurant  
  
Lee's Summit, MO

PROJECT:

LS - MONUMENT SIGN

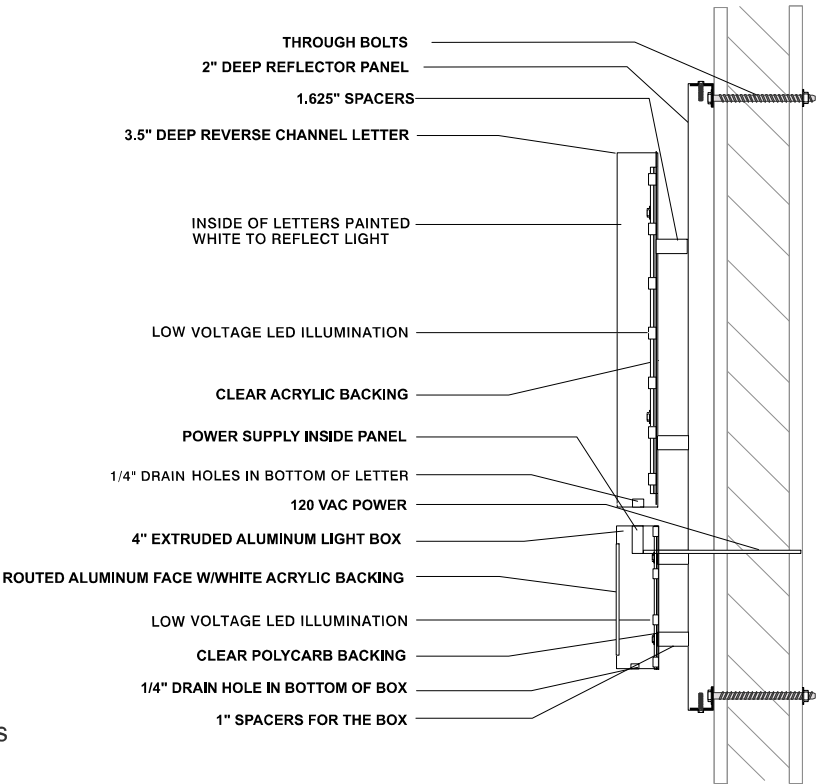
DATE:

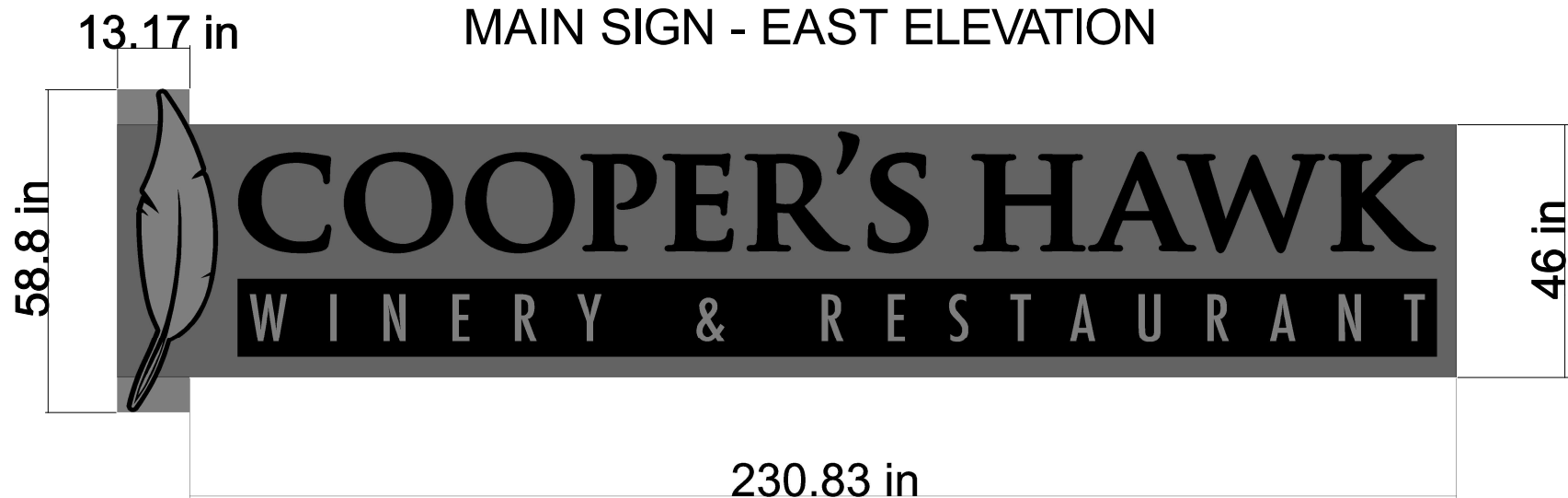




## MAIN SIGN - EAST ELEVATION

REVERSED CHANNEL LETTERS MOUNTED ON REFLECTOR PANEL  
WIREWAY REFLECTOR PANEL: 46" x 244" PAINTED AKZO 498D2 (GRAY)  
COOPER'S HAWK: 17.7" REVERSE LIT LETTERS PAINTED BLACK, RED LEDs  
FEATHER: 58.8" X 16.7" FRONT LIT/REVERSE LIT CAPSULE. SIDES PAINTED BLACK, WHITE LEDs  
WINERY & RESTAURANT: 14.3" X 218.5" FRONT LIT / REVERSE LIT LIGHT BOX,  
ROUTED ALUMINUM FACE, WITH WHITE ACRYLIC BACKING, BOX PAINTED BLACK, WHITE LEDs





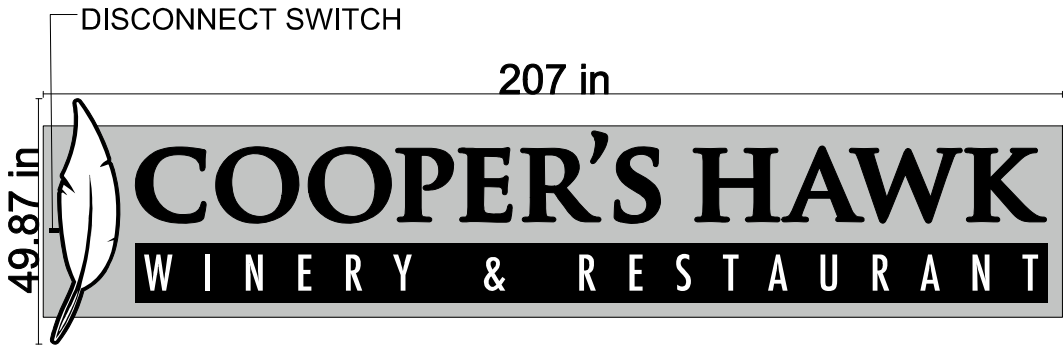
ALLOWABLE AREA:  $56.33 \times 23.17 \times 0.1 = 130.5$  SQ FT

SIGN AREA CALCULATION

$$(58.8 \times 13.17) + (46 \times 230.83) = 11,393 \text{ SQ IN}$$
$$= 79.1 \text{ SQ FT}$$

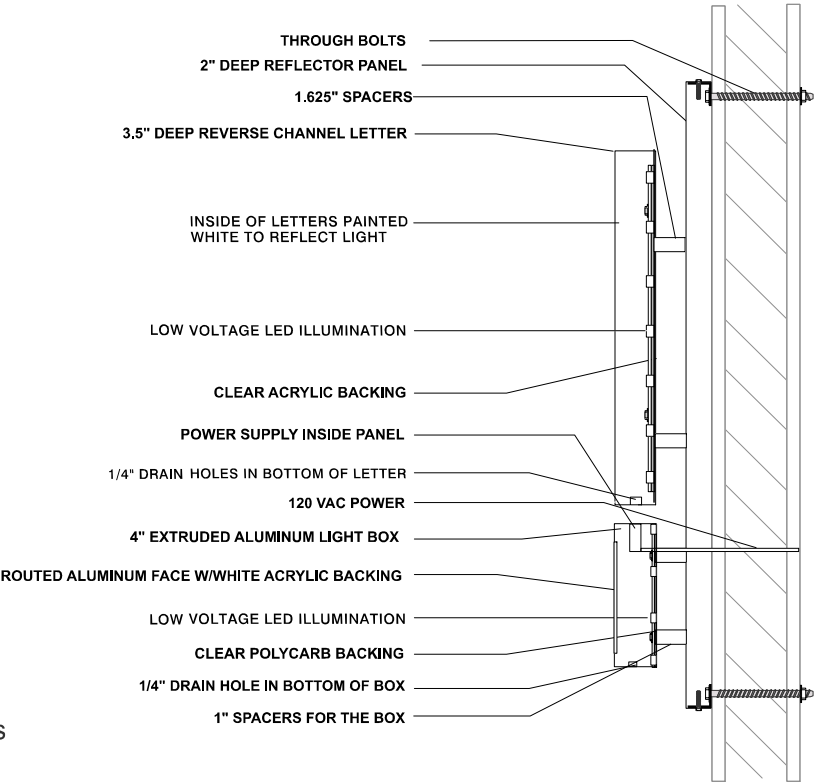
	Elevate Sign Group 1120 N. Ridge Ave. Lombard, IL 60148 T: 630-656-1085 <a href="http://www.elevatesigngroup.com">www.elevatesigngroup.com</a>	SUBMITTED TO:  Cooper's Hawk Winery & Restaurant  Lee's Summit, MO	PROJECT:  LS - MAIN EAST	DATE:   
--	--	---	--------------------------------	--



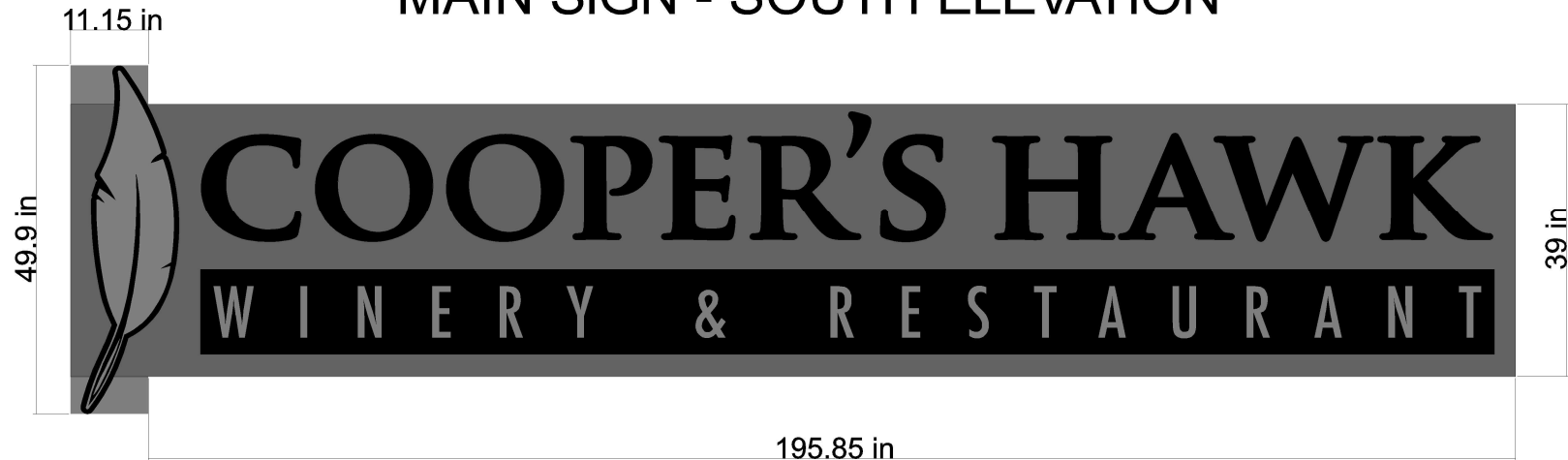


MAIN SIGN - SOUTH ELEVATION

REVERSED CHANNEL LETTERS MOUNTED ON REFLECTOR PANEL  
WIREWAY REFLECTOR PANEL: 39" x 27" PAINTED AKZO 498D2 (GRAY)  
COOPER'S HAWK: 15" REVERSE LIT LETTERS PAINTED BLACK, RED LEDs  
FEATHER: 49.9" X 14.1" FRONT LIT/REVERSE LIT CAPSULE. SIDES PAINTED BLACK, WHITE LEDs  
WINERY & RESTAURANT: 12.1" X 185.4" FRONT LIT / REVERSE LIT LIGHT BOX,  
ROUTED ALUMINUM FACE, WITH WHITE ACRYLIC BACKING, BOX PAINTED BLACK, WHITE LEDs



## MAIN SIGN - SOUTH ELEVATION

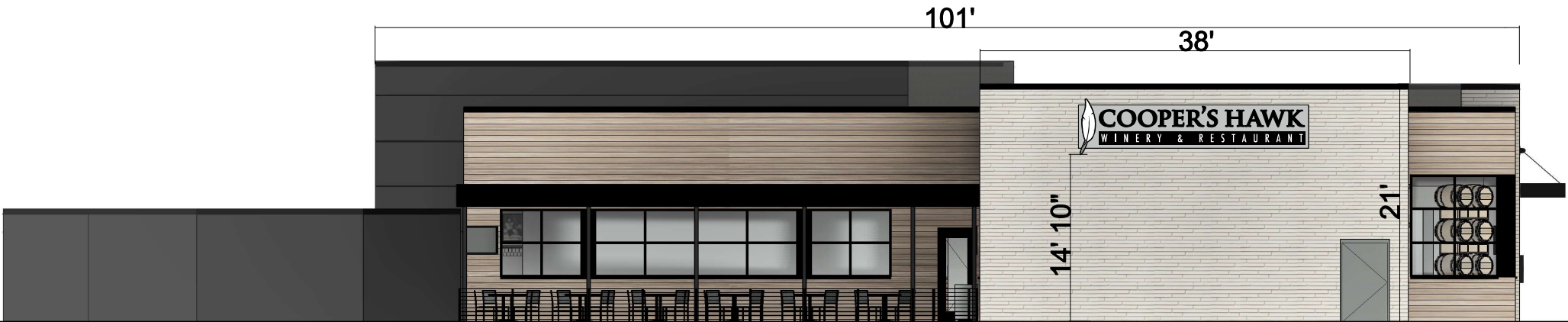


ALLOWABLE AREA:  $21 \times 106 \times 0.1 = 222.6$  SQ FT

### AREA CALCULATION

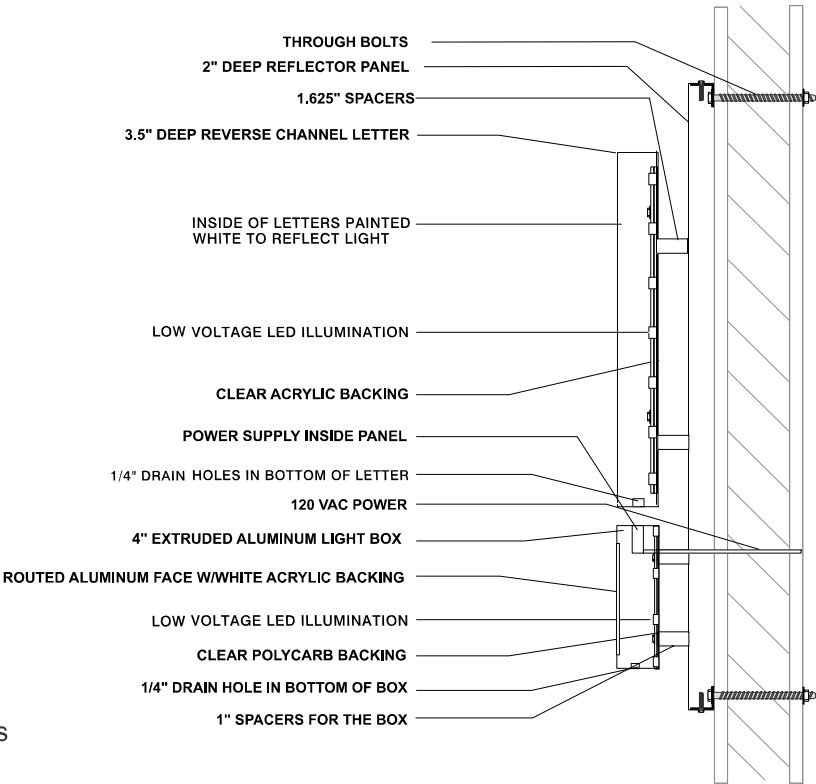
$$(49.9 \times 11.15) + (39 \times 195.85) = 8,195 \text{ SQ IN}$$
$$= 56.9 \text{ SQ FT}$$

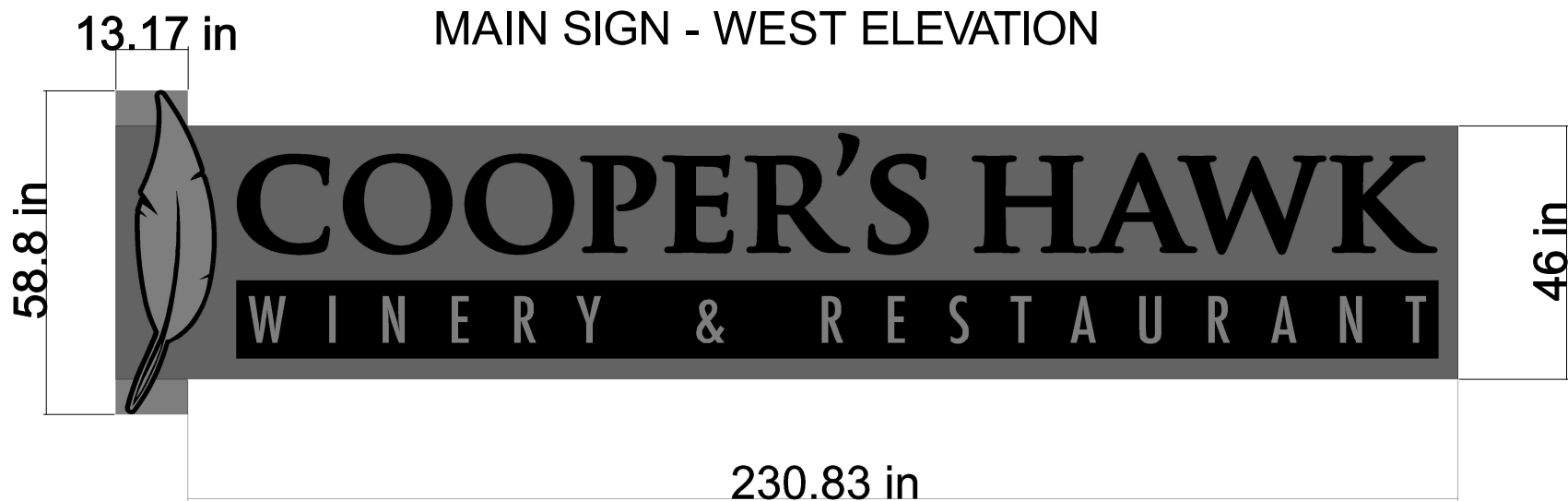
	Elevate Sign Group 1120 N. Ridge Ave. Lombard, IL 60148 T: 630-656-1085 www.elevatesigngroup.com	<b>SUBMITTED TO:</b>  Cooper's Hawk Winery & Restaurant  Lee's Summit, MO	<b>PROJECT:</b>  LS - MAIN SOUTH	<b>DATE:</b>   
--	--	--	--	---



## MAIN SIGN - WEST ELEVATION

REVERSED CHANNEL LETTERS MOUNTED ON REFLECTOR PANEL  
WIREWAY REFLECTOR PANEL: 46" x 244" PAINTED AKZO 498D2 (GRAY)  
COOPER'S HAWK: 17.7" REVERSE LIT LETTERS PAINTED BLACK, RED LEDs  
FEATHER: 58.8" X 16.7" FRONT LIT/REVERSE LIT CAPSULE. SIDES PAINTED BLACK, WHITE LEDs  
WINERY & RESTAURANT: 14.3" X 218.5" FRONT LIT / REVERSE LIT LIGHT BOX,  
ROUTED ALUMINUM FACE, WITH WHITE ACRYLIC BACKING, BOX PAINTED BLACK, WHITE LEDs





ALLOWABLE AREA: 21 X 38 X 0.1 = 79.8 SQ FT

AREA CALCULATION

$(58.8 \times 13.17) + (46 \times 230.83) = 11,393 \text{ SQ IN}$   
 $= 79.1 \text{ SQ FT}$

	Elevate Sign Group 1120 N. Ridge Ave. Lombard, IL 60148 T: 630-656-1085 www.elevatesigngroup.com	SUBMITTED TO:  Cooper's Hawk Winery & Restaurant  Lee's Summit, MO	PROJECT:  LS - MAIN WEST	DATE:   
--	--	---	--------------------------------	--