

PROJECT CONTACTS:

DMD,MSD
 C: 816.686.5991
 CONTACT: RAVI JAY RAJANNA
 EMAIL: kcortho@gmail.com

ARCHITECT
 DEV INC.
 8807 MONROVIA
 LENEXA, KS 66215
 T: 913.322.8882
 CONTACT: KEVIN CAMPBELL
 EMAIL: kevin@dev-inc.com

MEP ENGINEER
 LANKFORD FENDLER ASSOCIATES
 1730 WALNUT STREET
 KANSAS CITY, MO 64108
 T: 816.221.1411
 CONTACT: ALEX MALYAROV
 EMAIL: alexm@lankfordfendler.com

DRAWING INDEX:

- ARCHITECTURAL**
 A0.0 CODE PLAN
 A0.1 DOOR SCHEDULE
 A1.0 DEMOLITION PLAN
 A1.1 FLOOR PLAN
 A2.0 ELEVATIONS
- MECHANICAL, PLUMBING & ELECTRICAL**
 MEP1.0 SPECIFICATIONS
 MEP1.1 SPECIFICATIONS
 MEP1.2 SPECIFICATIONS
- M1.0 FLOOR PLAN-MECHANICAL**
 M2.0 MECHANICAL DETAILS
- P1.0 FLOOR PLAN-PLUMBING**
 P2.0 PLUMBING DETAILS
 P2.1 PLUMBING SCHEDULES, NOTES AND SYMBOLS
- E1.0 FLOOR PLAN-POWER**
 E2.0 FLOOR PLAN-LIGHTING
 E3.0 ELECTRICAL DETAILS
 E3.1 ELECTRICAL SCHEDULES, GENERAL NOTES & SYMBOLS

APPLICABLE CODES:
 2018 INTERNATIONAL BUILDING CODE
 2018 INTERNATIONAL PLUMBING CODE
 2018 INTERNATIONAL MECHANICAL CODE
 2018 INTERNATIONAL FUEL GAS CODE
 2018 INTERNATIONAL FIRE CODE
 2017 NATIONAL ELECTRIC CODE
 ICC/ANSI A117.1-2009, ACCESSIBLE AND USABLE BUILDINGS FACILITIES

TENANT USE GROUP:
 B - BUSINESS

CONSTRUCTION TYPE:
 TYPE V-B, UNPROTECTED, NON-SPRINKLED

CODE AREA:
 2,340 SF

OCCUPANT LOAD:
 54 PEOPLE

WAITING AREA: 496 SF/15 = 33
 GENERAL OFFICE: 1791 SF/150 = 12
 BREAK AREA: 127 SF/15 = 9

EXITS REQUIRED: 2 PER SECTION 1006.2.1
 EXITS SEPARATION REQUIRED: > 1/3 MAX DIAGONAL = 22'-7"
 EXIT WIDTH REQUIRED: 32" FOR EACH DOOR PER 1010.1.1
 TRAVEL DISTANCE: 200' PER TABLE 1017.2

PLUMBING FIXTURES:

TOILET REQ'D: 1 WOMEN / 1 MEN
 TOILET PROVIDED: 2 WOMEN / 1 MEN

SINK REQ'D: 1 WOMEN / 1 MEN
 SINK PROVIDED: 2 WOMEN / 1 MEN

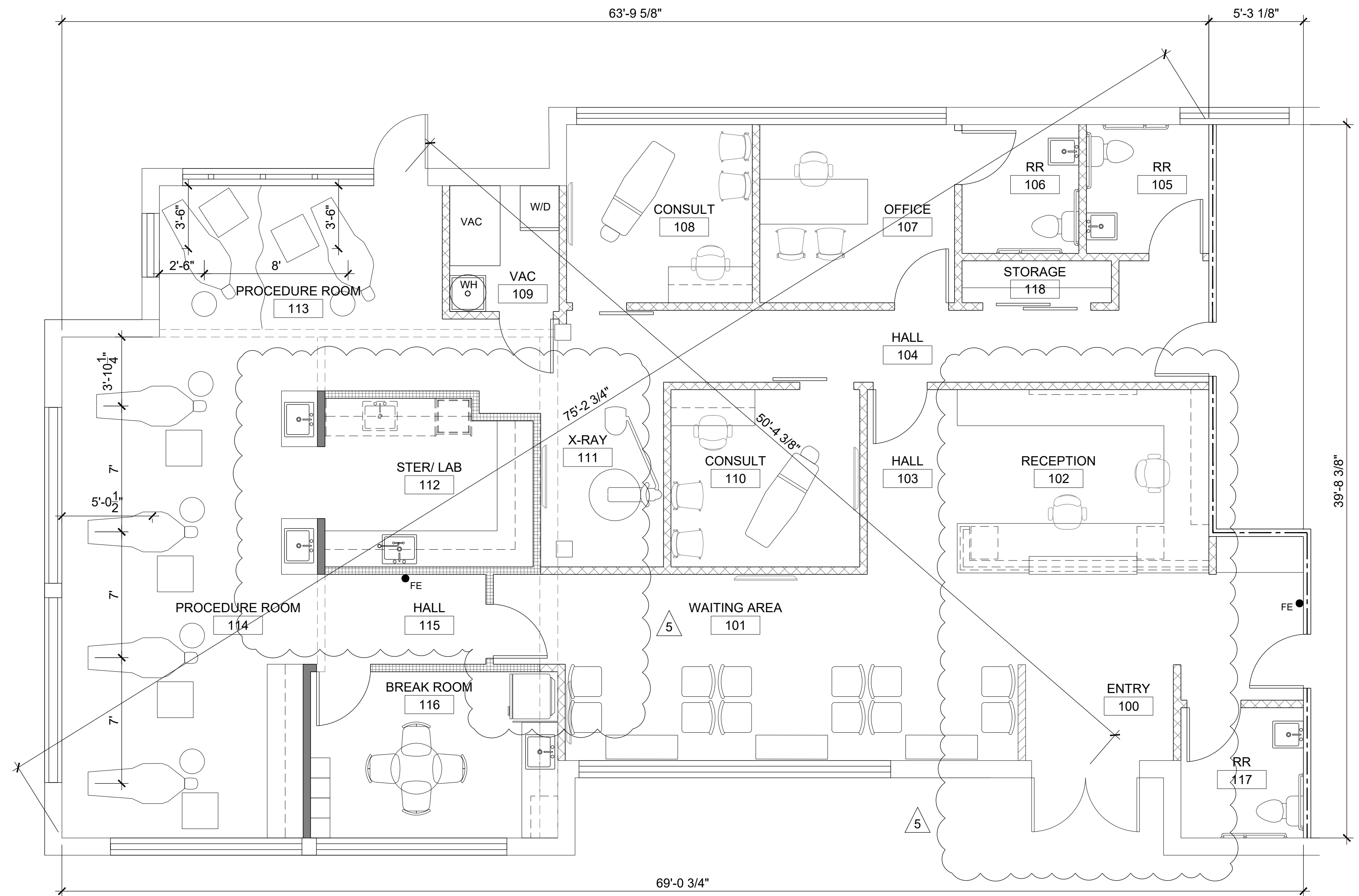
DRINKING FOUNTAIN REQ'D: 0
 DRINKING FOUNTAIN PROVIDED: BOTTLED WATER @ BREAK ROOM

SERVICE SINK REQ'D: 1
 SERVICE SINK PROVIDED: PROVIDED

ACTIVE FIRE SAFETY FEATURES:

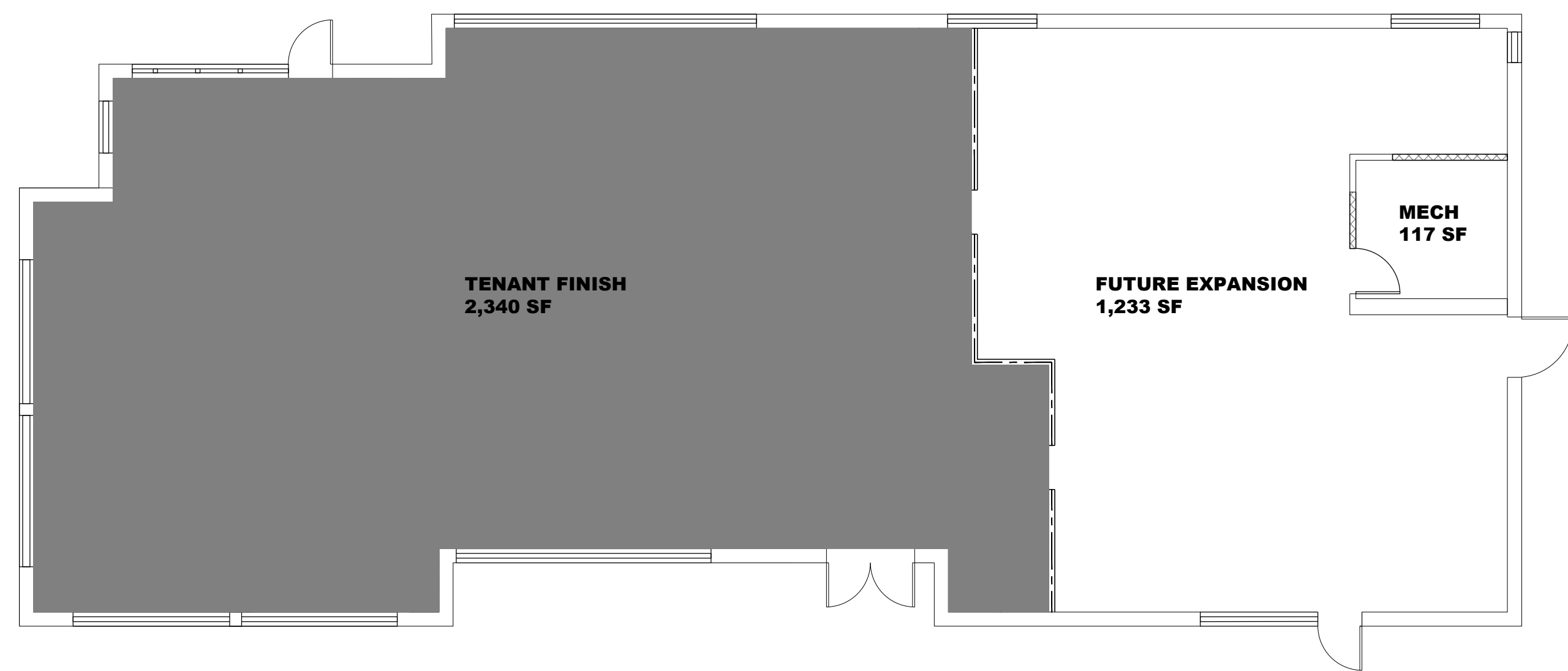
EXIT SIGNS: BATTERY BACK-UP POWERED
 EMERGENCY LIGHTS: BATTERY BACK-UP POWERED
 FIRE EXTINGUISHERS: PROVIDE PER NFPA 10
 FIRE ALARM: NOTIFICATION / ALARM SYSTEM PROVIDED
 MANUAL PULLS NOT REQUIRED

● FE
 TYPE 2A-10B FIRE EXTINGUISHER
 INSTALL AT 4'-0" A.F.F. TO THE HANDLE.
 COORDINATE FINAL LOCATIONS WITH
 TENANT & FIRE MARSHAL.



4 CODE DATA

2 CODE PLAN
 SCALE: 1/4" = 1'-0" NORTH



3 KEY PLAN
 SCALE: 1/8" = 1'-0" NORTH



1 VACINITY MAP
 NOT TO SCALE NORTH



Dev Anand
 President & CEO

Kevin Campbell
 Senior Architect

8807 Monrovia Street
 Lenexa, Kansas 66215

Phone: 913.322.8882
 Fax: 913.322.8886
 Email: kevin@dev-inc.com

THIS DRAWING has been prepared by the Architect, or prepared under his direct supervision as an instrument of service and is intended for use only on this project. All Drawings, Specifications, Ideas and designs, including the overall layout, form, arrangement, and composition of spaces and elements portrayed, constitute the original, unpublished work of the Architect. Any reproduction, use, or disclosure of the information contained herein without the written consent of the Architect is strictly prohibited.

COMPLY WITH all laws, codes, ordinances and regulations with authorities having jurisdiction and with requirements of the Landlord, if applicable. Do not start work until all permits and required approvals are obtained.



A TENANT FINISH FOR:
LAKWOOD ORTHODONTICS
 1399 NE DOUGLAS ST
 LEE'S SUMMIT, MO 64086

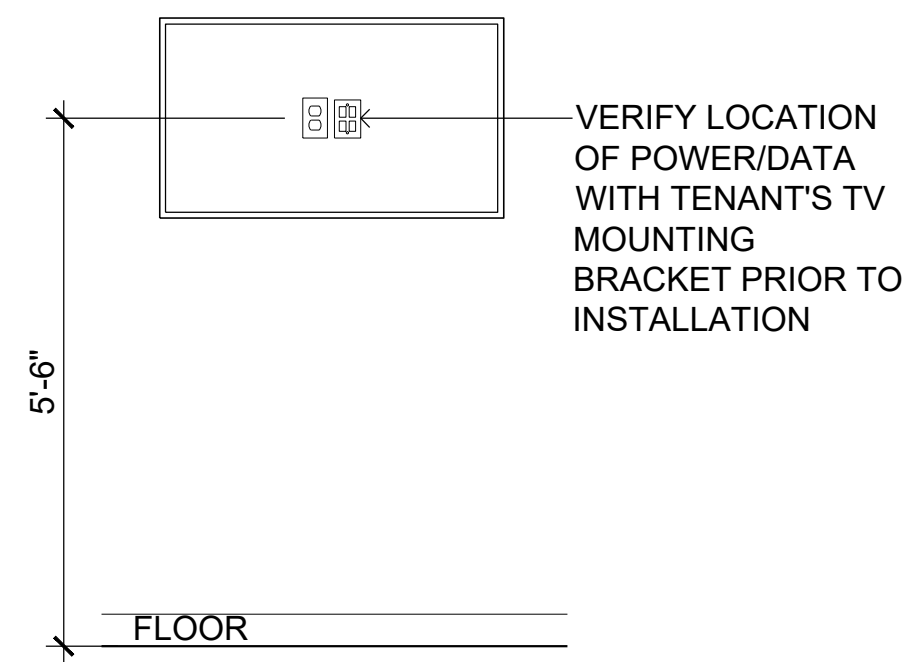


PROJECT NO. 210407
DRAWING ISSUANCE
 08/13/2021 BUILDING PERMIT REV 04
 01/16/2022 REV 04
 03/25/2022 REV 05

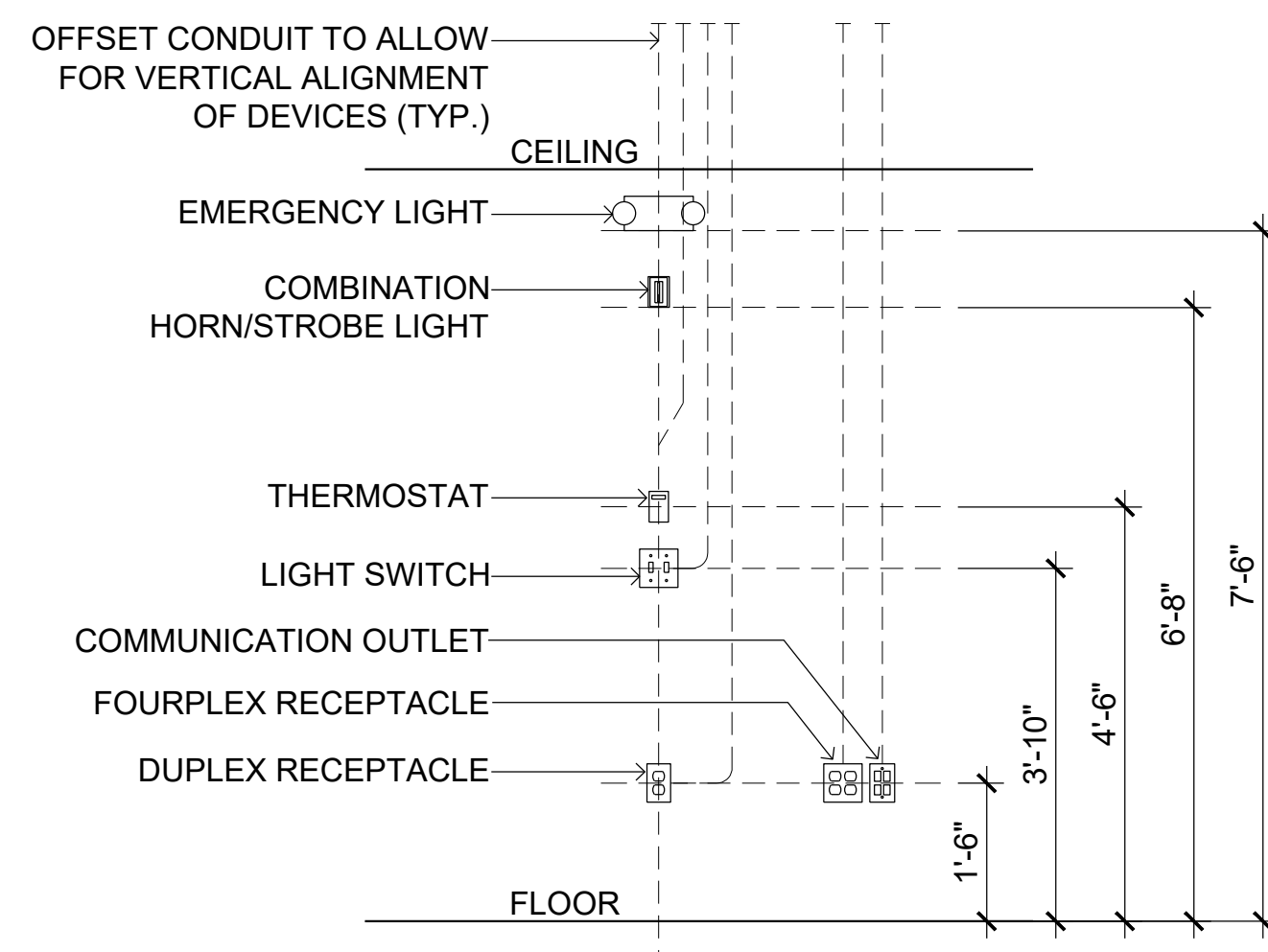
SHEET NUMBER
A0.0
 CODE PLAN

DOOR SCHEDULE					
DR NO.	DOOR SIZE	DOOR TYPE	FRAME TYPE	HARDWARE	REMARKS
100	EXISTING	-	-	-	DOOR, FRAME & HARDWARE TO REMAIN
101	NOT USED	-	-	-	
102	3'-0" x 8'-0"	A	1	6	20 MINUTE DOOR & FRAME
103	3'-0" x 8'-0"	A	1	1	
104	3'-0" x 8'-0"	A	1	6	20 MINUTE DOOR & FRAME
105	3'-0" x 8'-0"	A	1	5	
106	3'-0" x 8'-0" (PAIR)	A	3	4	SLIDING CLOSET DOOR SYSTEM
107	3'-0" x 8'-0"	A	1	1	
108	3'-2" x 8'-0"	B	2	3	
109	3'-2" x 8'-0"	B	2	3	
110	3'-0" x 8'-0"	A	1	2	
111	EXISTING	-	-	-	DOOR, FRAME & HARDWARE TO REMAIN
112	3'-0" x 8'-0"	A	1	1	
113	3'-0" x 8'-0"	A	1	1	
114	3'-0" x 8'-0"	A	1	5	
115	3'-0" x 8'-0"	A	1	5	

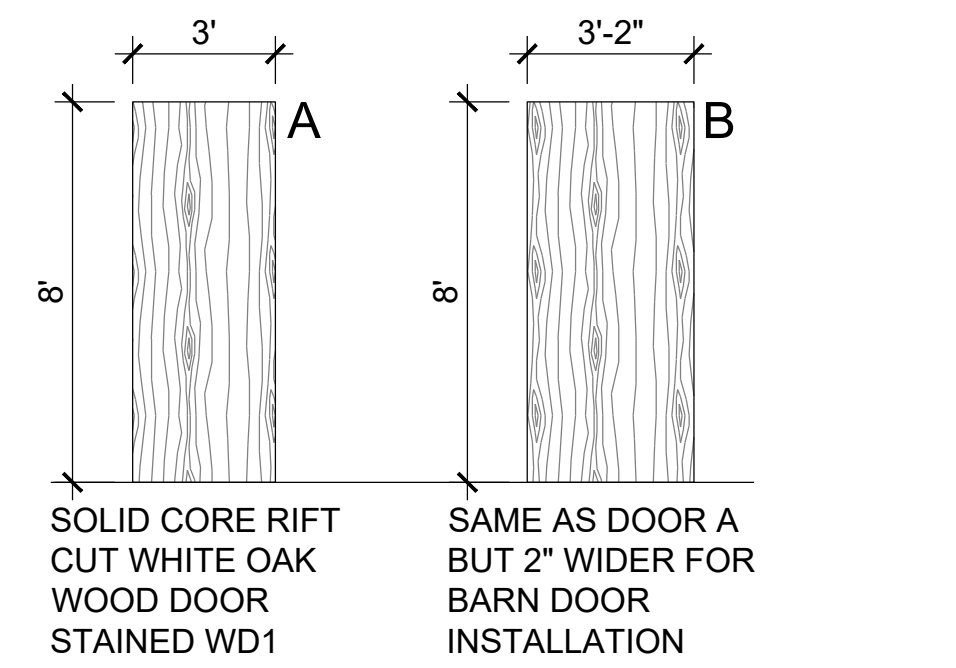
5 UPDATED DOORS 101, 102, 104, 106-110
ADDED DOOR 115



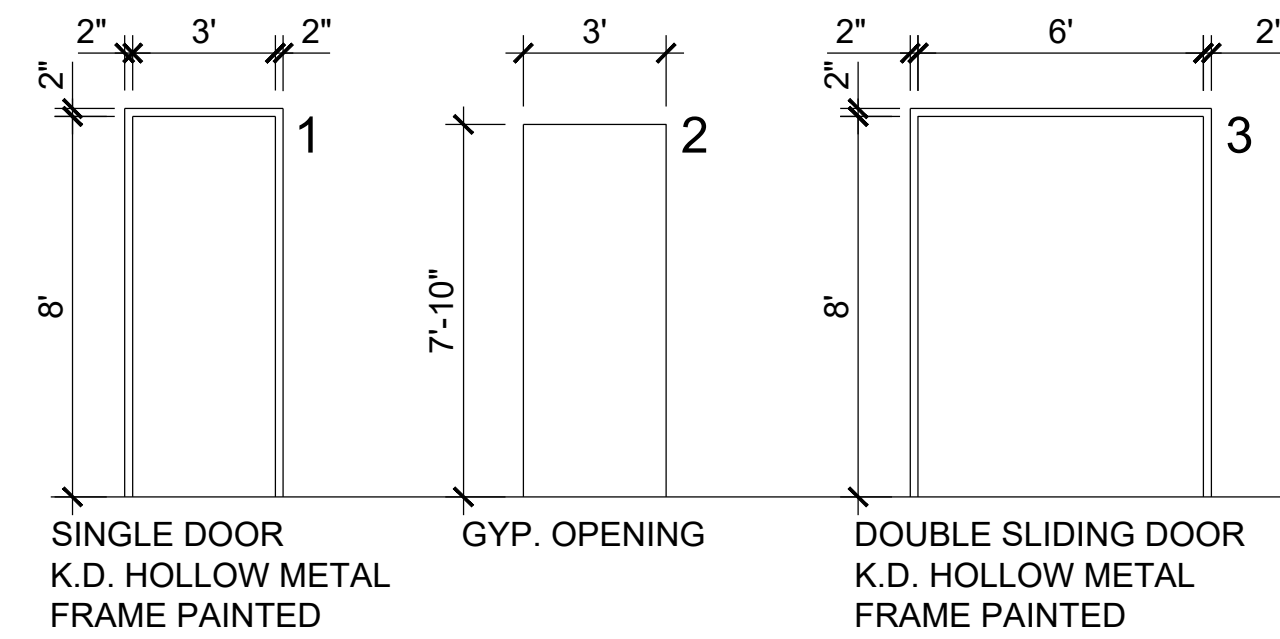
7 TV MOUNTING
SCALE: 1/2" = 1'-0"



6 DEVICE MOUNTING
SCALE: 1/2" = 1'-0"



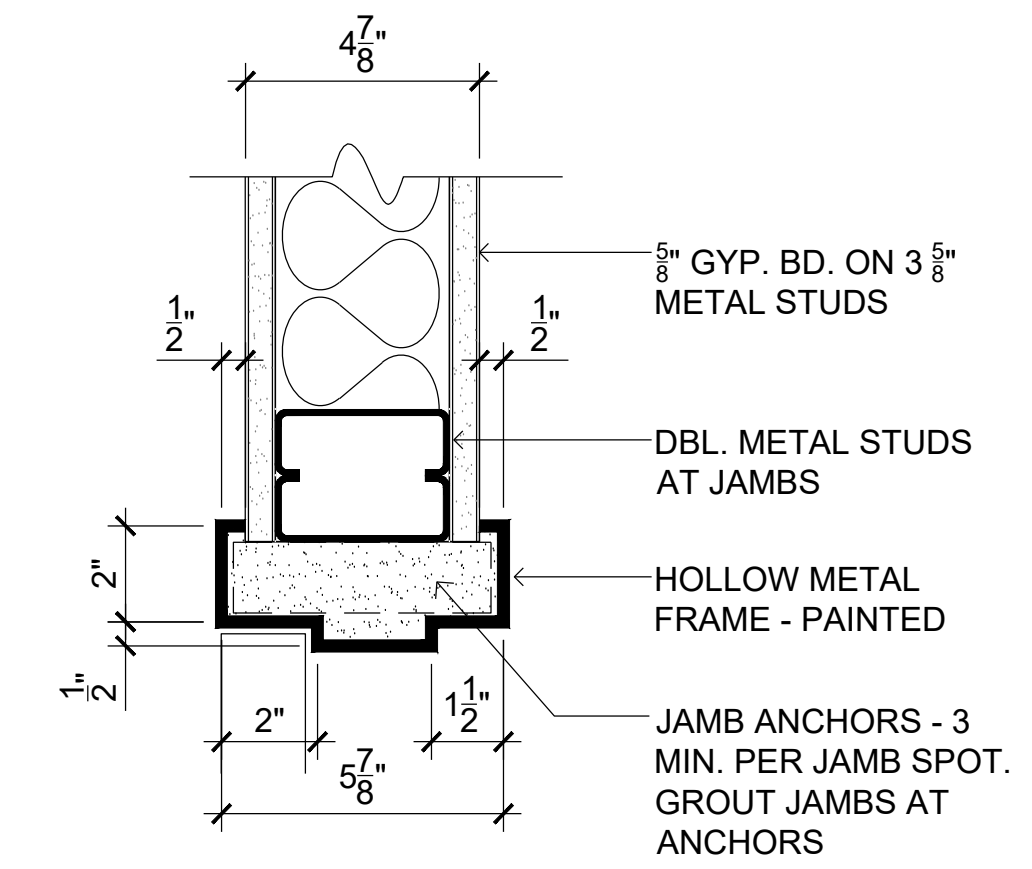
DOOR TYPES
UPDATED DOOR TYPES 5



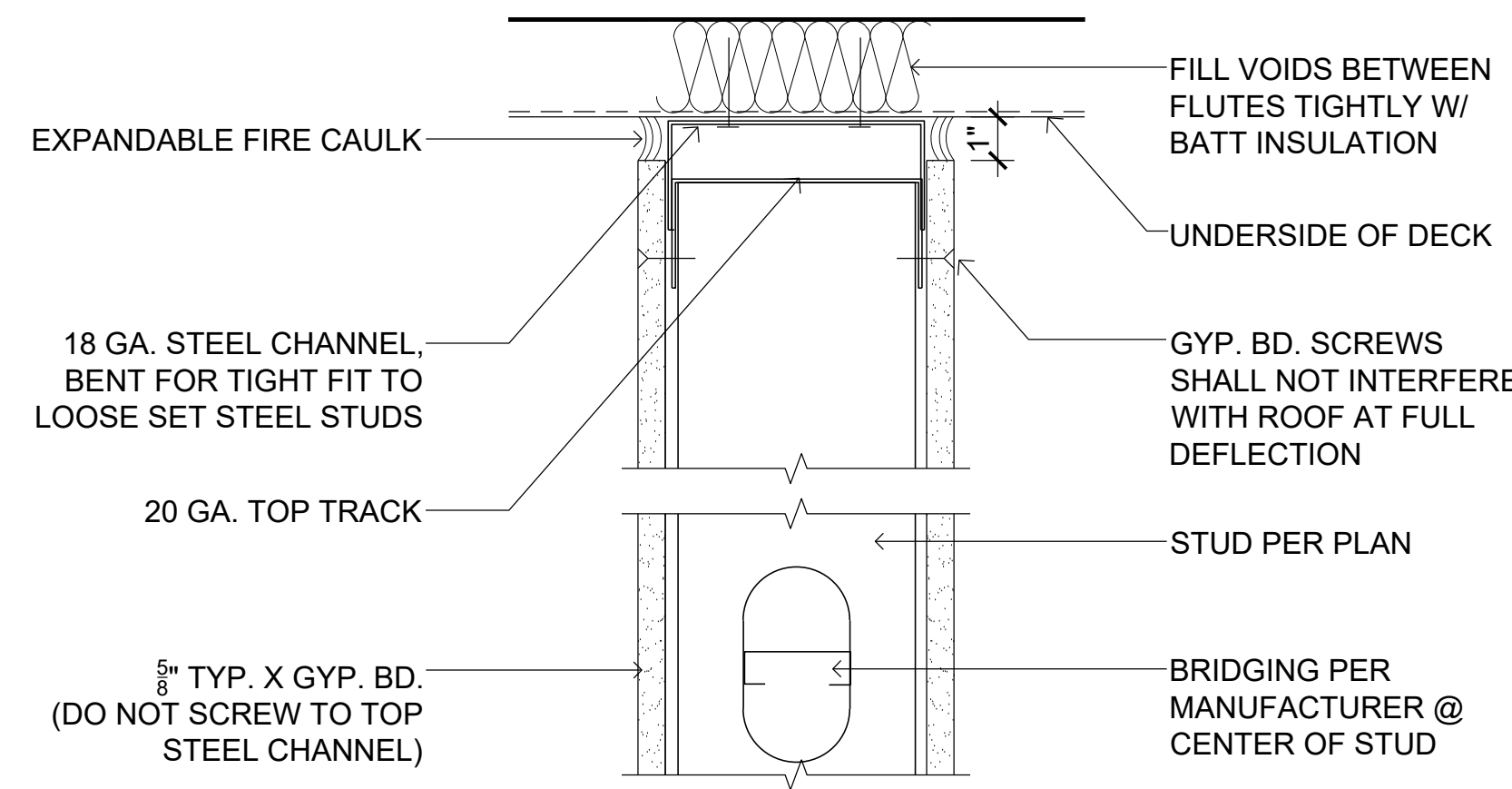
DOOR FRAMES
UPDATED FRAME TYPES 5

- HARDWARE SCHEDULE:
- SET 1
(3) BUTTS
(1) PASSAGE SET
(1) STOP
DOOR SILENCERS
- SET 2
(3) BUTTS
(1) STORAGE LOCK SET
(1) STOP
DOOR SILENCERS
- SET 3
REAL SLIDING HARDWARE
SF-AE06S AERO KIT
FOR BARN DOOR
STAINLESS STEEL
(2) 18" LADDER HANDLES
STOPS
- SET 4
HETTICH SLIDING HARDWARE:
(2) GRANT 75E 6' SET
(TRACK AND HARDWARE)
PRODUCT#1135339
(2) FLUSH DOOR PULL -
DELTANA PRODUCT #
FP7178U15
- SET 5
(3) BUTTS
(1) PRIVACY LOCK SET
W/ OCCUPIED INDICATOR
(1) STOP
DOOR SILENCERS

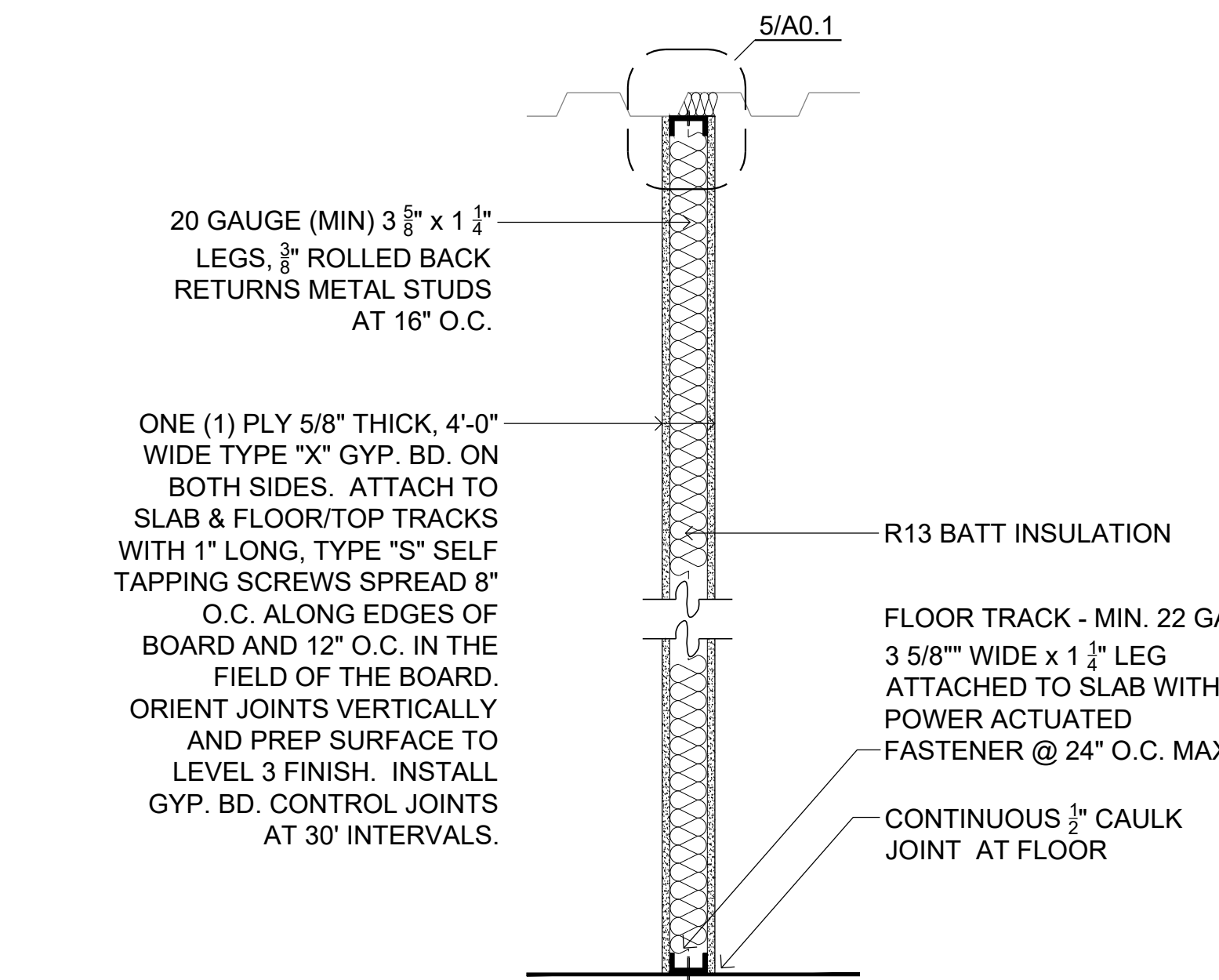
- SET 6
(3) BUTTS
(1) RIM PANIC DEVICE
(1) CLOSER
(1) WALL STOP
(1) SMOKE SEAL SET



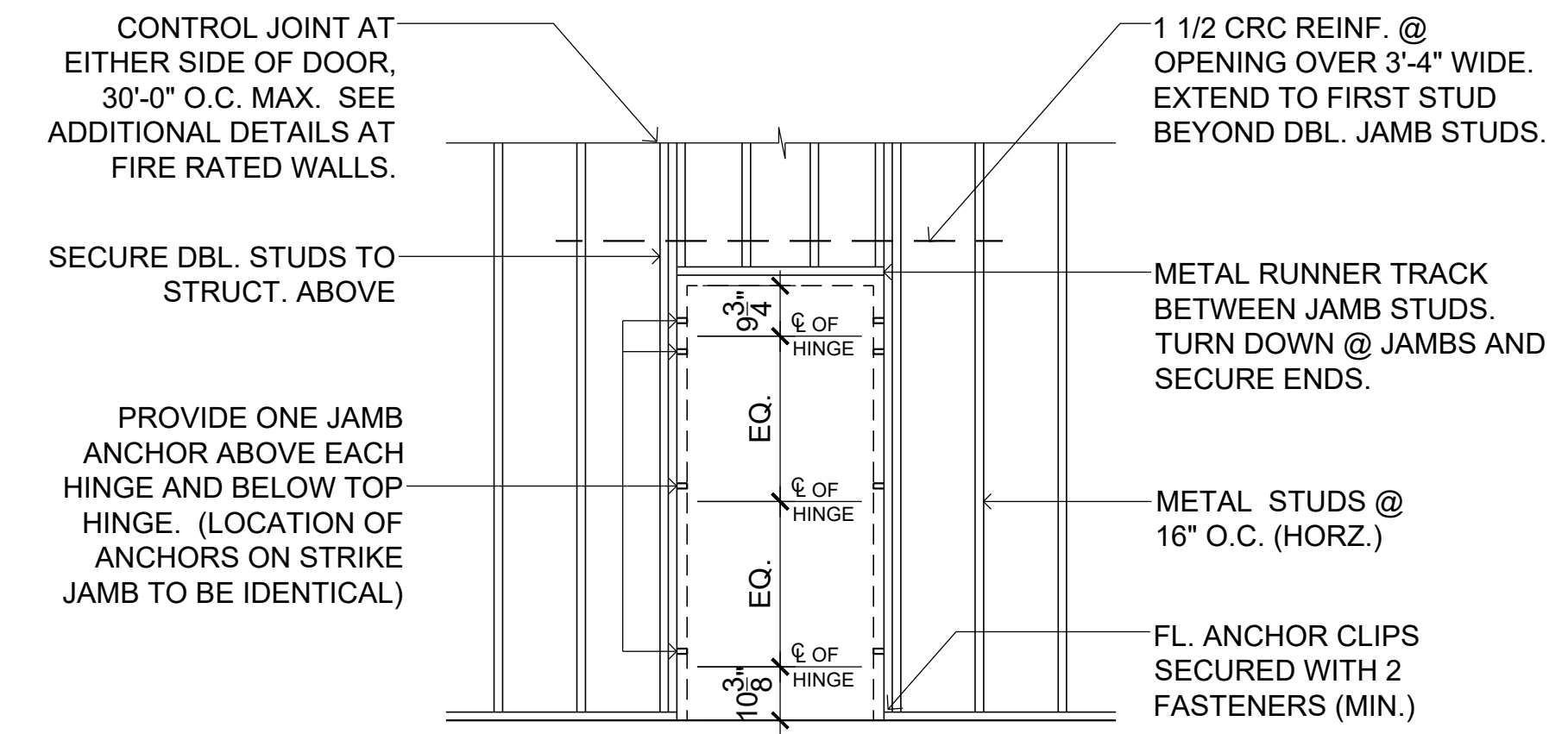
3 DOOR JAMB DETAIL
SCALE: 3" = 1'-0"



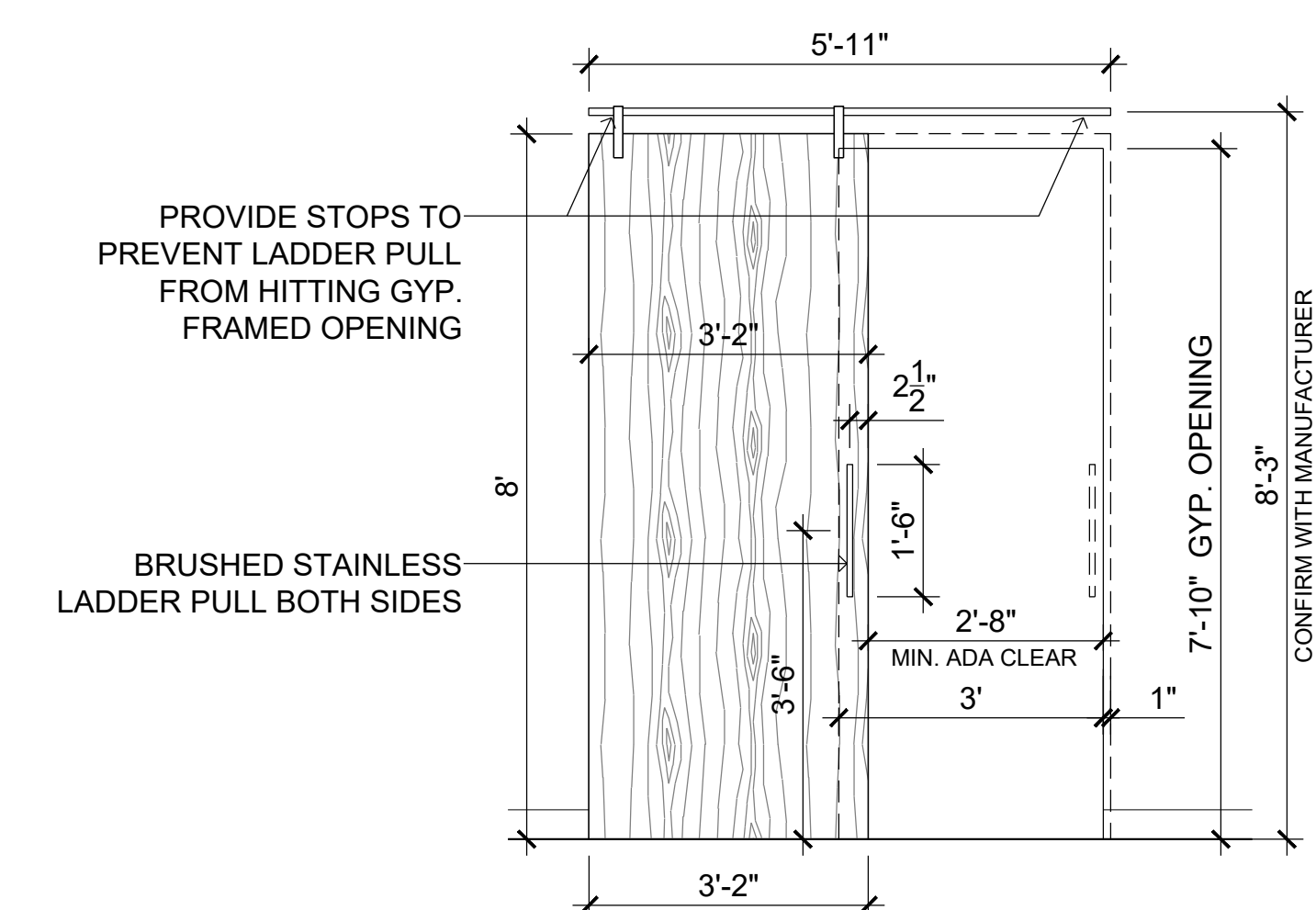
5 1 HR. RATED SLIP TRACK
SCALE: 3" = 1'-0"
UL DESIGN NO. HW-D-0042



4 1 HR. DEMISING PARTITION
SCALE: 1/2" = 1'-0"
UL DESIGN NO. U465



2 DOOR FRAMING DETAIL
SCALE: 3/8" = 1'-0"



1 BARN DOOR INSTALL
SCALE: 1/2" = 1'-0"



Dev Anand
President & CEO

Kevin Campbell
Senior Architect

8807 Monrovia Street
Lenexa, Kansas 66215

Phone: 913.322.8892
Fax: 913.322.8886
Email: kevin@dev-inc.com

THIS DRAWING has been prepared by the Architect, or prepared under his direct supervision as an instrument of service and is intended for use only on this project. All Drawings, Specifications, Ideas and designs, including the overall layout, form, arrangement, and composition of spaces and elements portrayed, constitute the original, unpublished work of the Architect. Any reproduction, use, or disclosure of the information contained herein without the written consent of the Architect is strictly prohibited.

COMPLY WITH all laws, codes, ordinances and regulations with authorities having jurisdiction and with requirements of the Landlord, if applicable. Do not start work until all permits and required approvals are obtained.



LAKWOOD ORTHODONTICS

1399 NE DOUGLAS ST
LEE'S SUMMIT, MO 64086

A TENANT FINISH FOR:



03/25/2022

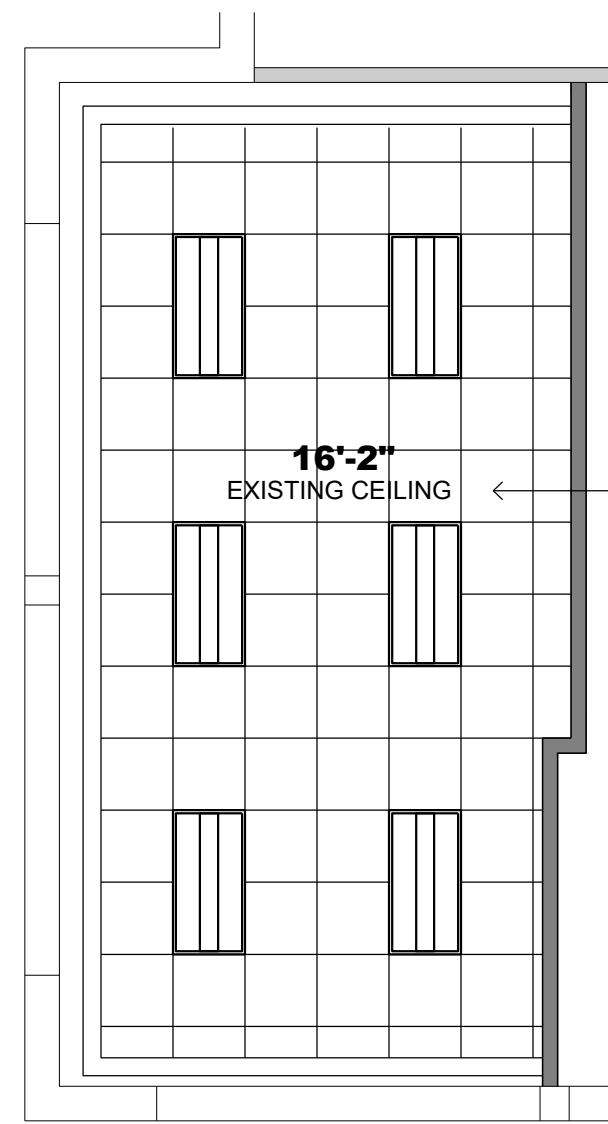
PROJECT NO. 210407

DRAWING ISSUANCE

08/13/2021 BUILDING PERMIT REV 03
10/06/2021 REV 02
01/19/2022 REV 04
03/25/2022 REV 05

SHEET NUMBER

A0.1
DETAILS



INSTALL NEW CEILING TILES, LIGHT FIXTURES, & MECHANICAL DIFFUSERS. EXISTING CLG GRID TO REMAIN.

UPDATED CEILING LEGEND

- 2x4 LAY-IN GRID & ACCOUSTICAL CEILING TILE, COMMERCIAL GRADE, WHITE
- PAINTED GYP. HEADER, GRID TRANSITION OR SOFFIT. REFER NOTES ON PLAN
- 2x4 LOW PROFILE CENTER BASKET DIRECT/INDIRECT RECESSED LED LIGHT FIXTURE
- RECESSED LIGHT FIXTURE

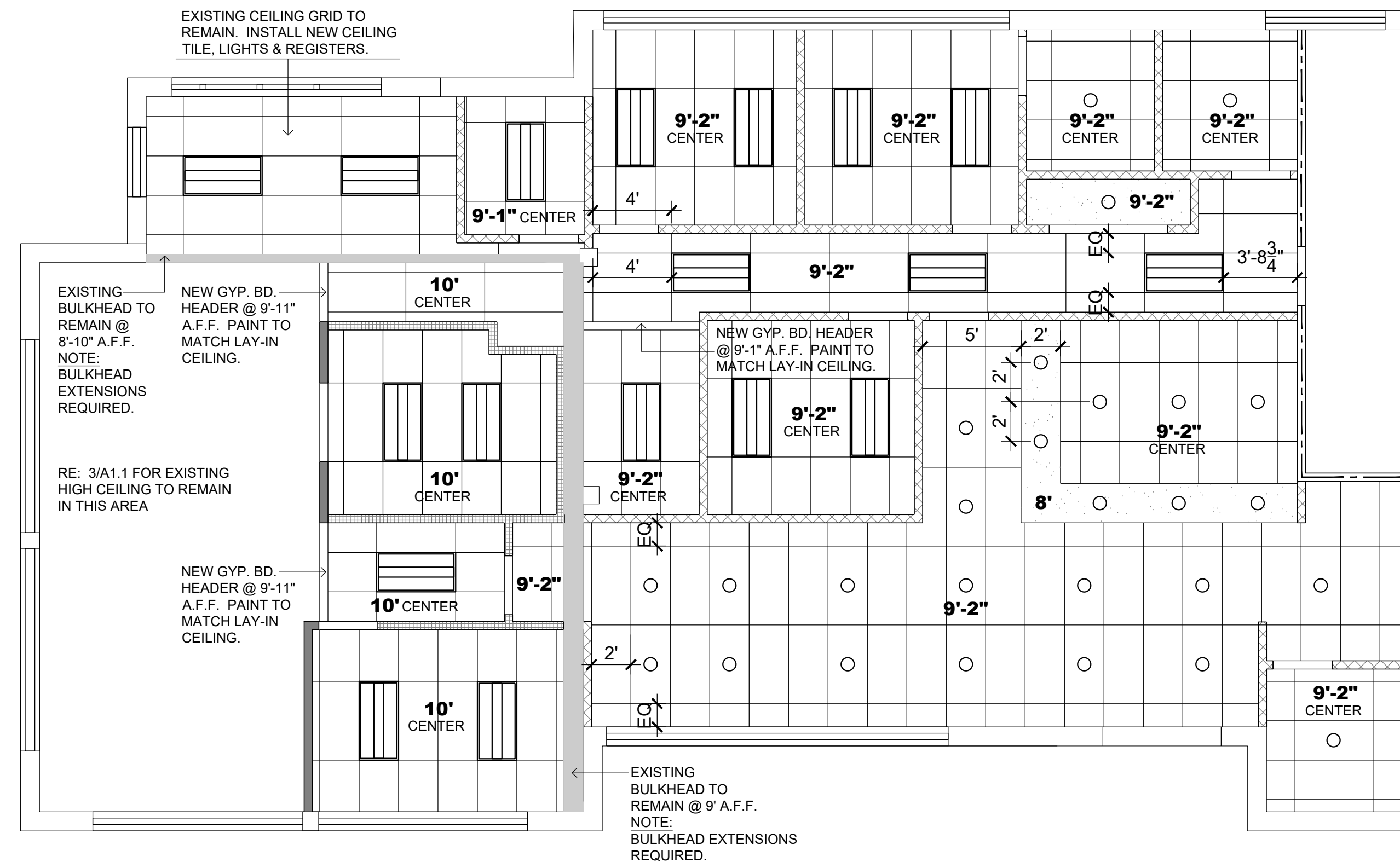
3 LEVEL 2 RCP
SCALE: 3/16" = 1'-0"



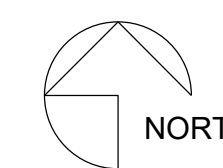
UPDATED WALL TYPES

- WALL NOTES**
- ALL GYP. BD. INSTALLED SHALL BE PREPPED TO LEVEL 4 FINISH WITH GYP. BD. CONTROL JOINTS AT 30" INTERVALS.
 - INSTALL BATT INSULATION IN ALL WALLS EXCEPT WINDOW INFILL WALLS, PARTIAL HEIGHT WALLS, LOW WALLS AND COLUMN ENCLOSURES.
 - INSTALL GYP. BD. ON EXPOSED SIDES ONLY AT DOUBLE WALLS OR BLOCKOUTS.
 - INSTALL GYP. BD. ON INSIDE FACE OF EXTERIOR WALLS.
 - INSTALL BATT INSULATION IN EXTERIOR WALLS IF NOT PRESENT OR IN POOR CONDITION.

- WALL TYPES**
- EXISTING WALL TO REMAIN
 - 25 GA. 3 5/8" METAL STUDS @ 16" O.C. EXTENDING TO DECK WITH BATT INSULATION AND 5/8" LIGHT WEIGHT TYPE 'X' GYP. BD. ON BOTH SIDES EXTENDING TO DECK.
 - 25 GA. 3 5/8" METAL STUDS @ 16" O.C. EXTENDING TO DECK WITH BATT INSULATION AND 5/8" LIGHT WEIGHT TYPE 'X' GYP. BD. ON BOTH SIDES EXTENDING TO DECK. FIRE TAPE & FIRE CAULK TO ACHIEVE 1 HR FIRE RATING - UL465.
 - 25 GA. 3 5/8" METAL STUDS @ 16" O.C. EXTENDING TO 4" ABOVE CEILING WITH BATT INSULATION AND 5/8" LIGHT WEIGHT TYPE 'X' GYP. BD. ON BOTH SIDES EXTENDING TO 4" ABOVE CEILING.
 - 20 GA. 3 5/8" METAL STUDS @ 16" O.C. EXTENDING TO DECK WITH BATT INSULATION AND 5/8" LIGHT WEIGHT TYPE 'X' GYP. BD. ON BOTH SIDES EXTENDING TO DECK.
 - 25 GA. 3 5/8" METAL STUDS @ 16" O.C. WITH DIETRICH PONY WALL SUPPORTS AND 5/8" LIGHT WEIGHT TYPE 'X' GYP. BD. ON BOTH SIDES EXTENDING TO 5' A.F.F. FINISH TOP OF WALL WITH A STAINED WOOD CAP.
 - HALF WALL AT RECEPTION COUNTER



2 LEVEL 1 RCP
SCALE: 3/16" = 1'-0"



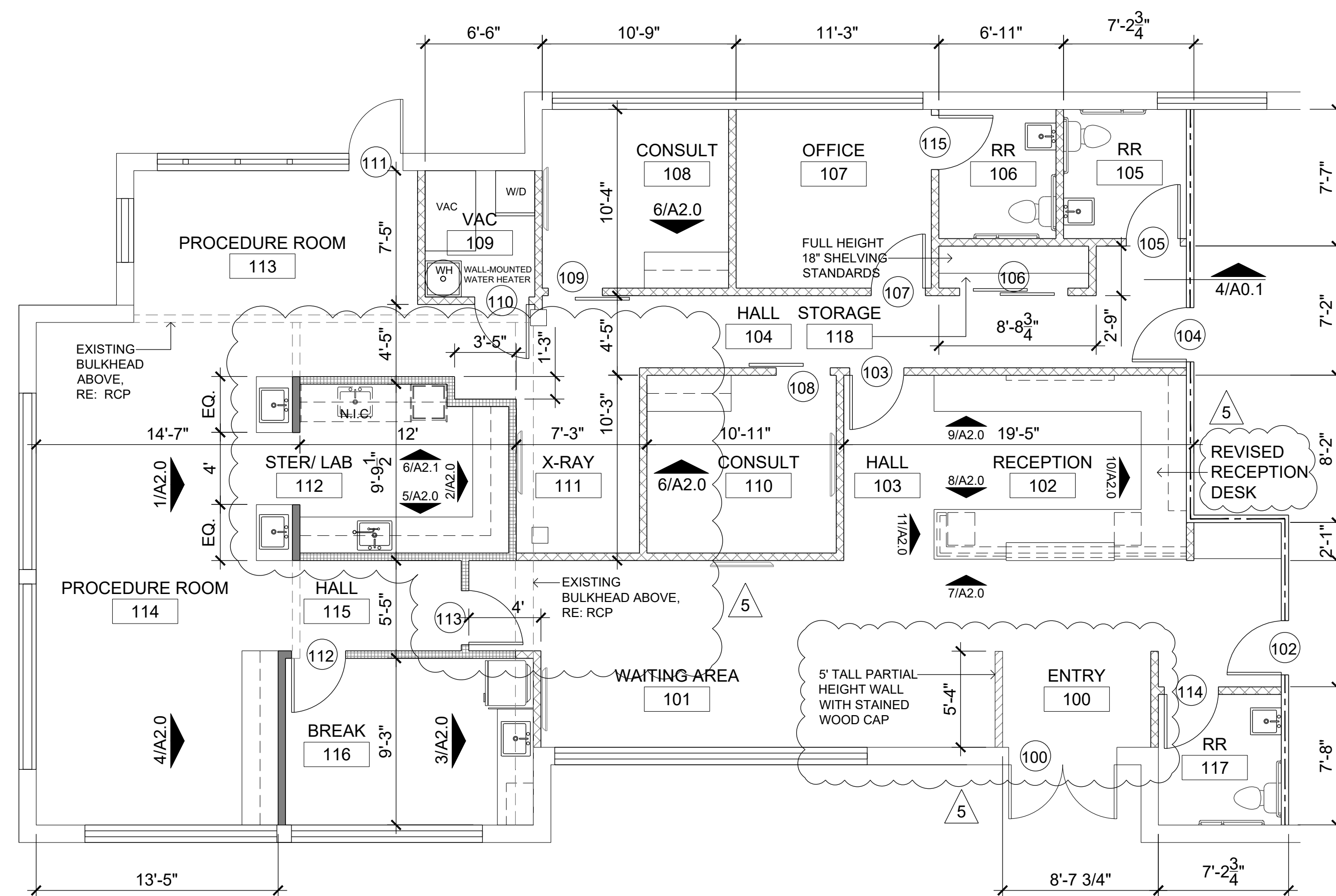
ADJUSTED CEILING IN ENTRY, WAITING & RECEPTION

UPDATED FINISH SCHEDULE

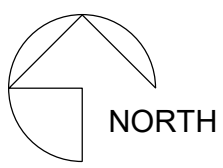
#	PRODUCT	MANUFACTURE	COLOR	MODEL/ PATTERN
CT1	CARPET TILE	TARKETT	SHADOW GRIS	GEOKNIT
LVT1	LVT	TBD	TBD	TBD
WB1	WALL BASE	ROPPE	170 WHITE	4" RUBBER BASE
T1	CERAMIC TILE	MSI	CONCRETO GRIGIO	24"x24", MATTE FINISH
T2	CERAMIC TILE	TBD	TBD	TBD
T3	CERAMIC TILE	TBD	TBD	TBD
T4	CERAMIC TILE	MSI	BALBOA AMBER	6X24 MATTE
ACT	LAY-IN CEILING	USG RADAR	WHITE	2'x4' FLAT SQUARE EDGE
P1	PAINT	SHERWIN WILLIAMS	SW 7103-WHITETAIL	EGGSHELL FINISH
P2	PAINT (ACCENT)	SHERWIN WILLIAMS	SW 6236-GRAYS HARBOR	EGGSHELL FINISH
PL1	PLASTIC LAMINATE	FORMICA	7223C-AN	NEW WHITE
PL2	PLASTIC LAMINATE	FORMICA	5887-NT	NATURELLE FINISH
PL3	PLASTIC LAMINATE	FORMICA	9510-34	SCOVATO FINISH
PL4	PLASTIC LAMINATE	PIONITE	ME100-SD FADED MEMORIES	
SS1	SOLID SURFACE	METRO QUARTZ	M5016 TRUE WHITE	

ADDED ROOM FINISH SCHEDULE

RM NO.	ROOM NAME	FLOOR	BASE	WALLS			CLNG	CASEWORK			NOTES	
				N	E	S		W	BASE	CNTR		UPPR CABT
100	ENTRY	T1	WB1		P1	P1	P1	ACT				
101	WAITING	CT1	WB1	P1	P1	P1	P1	ACT				
102	RECEPTION	CT1	WB1	P2	P1	P1	P1	ACT	PL2	PL1	PL2	RE: 7/A2.0 ADD'L FINISHES
103	HALL	CT1	WB1	P1	P1	P1	P1	ACT				
104	HALL	LVT1	WB1	P1	P1	P1	P1	ACT				
105	RESTROOM	T1	-	P1/T2	P1/T2	P1/T2	P1/T2	ACT				5' TILE WAINSCOT
106	RESTROOM	T1	-	P1/T2	P1/T2	P1/T2	P1/T2	ACT				5' TILE WAINSCOT
107	OFFICE	CT1	WB1	P2	P1	P1	P2	ACT				
108	CONSULT	LVT1	WB1	P1	P2	P1	P1	ACT	PL1	PL1		
109	VAC	LVT1	WB1	P1	P1	P1	P1	ACT				
110	CONSULT	LVT1	WB1	P1	P1	P1	P2	ACT	PL1	PL1		
111	X-RAY	LVT1	WB1	P1	P1	P1	P1	ACT				
112	STER/LAB	LVT1	WB1	P1	P1	P1	P1	ACT	PL2	PL1	PL2	
113	PROCEDURE	LVT1	WB1	P1	P1	P1	P1	ACT				
114	PROCEDURE	LVT1	WB1	P1	P1	P1	P1	ACT	PL2	PL1	PL2	
115	HALL	LVT1	WB1	P1	P1	P1	P1	ACT				
116	BREAK ROOM	LVT1	WB1	P1	P1/T3	P1	P2	ACT	PL2	PL1	PL2	TILE BACKSPLASH
117	RESTROOM	T1	-	P1/T2	P1/T2	P1/T2	P1/T2	ACT				5' TILE WAINSCOT
118	STORAGE	LVT1	WB1	P1	P1	P1	P1	GYP.				



1 FLOOR PLAN
SCALE: 3/16" = 1'-0"



UPDATED FLOOR PLAN DIMENSIONS



Dev Anand
President & CEO

Kevin Campbell
Senior Architect

8807 Monrovia Street
Lenexa, Kansas 66215

Phone: 913.322.8892
Fax: 913.322.8886
Email: kevin@dev-inc.com

THIS DRAWING has been prepared by the Architect, or prepared under his direct supervision as an instrument of service and is intended for use only on this project. All Drawings, Specifications, Ideas and designs, including the overall layout, form, arrangement, and composition of spaces and elements portrayed, constitute the original, unpublished work of the Architect. Any reproduction, use, or disclosure of the information contained herein without the written consent of the Architect is strictly prohibited.

COPY BY WITH all laws, codes, ordinances and regulations with authorities having jurisdiction and with requirements of the Landlord, if applicable. Do not start work until all permits and required approvals are obtained.



A TENANT FINISH FOR:
LAKWOOD ORTHODONTICS
1399 NE DOUGLAS ST
LEE'S SUMMIT, MO 64086



PROJECT NO. 210407
DRAWING ISSUANCE

08/13/2021	BUILDING PERMIT	REV 01
09/03/2021		REV 01
09/08/2021		REV 02
10/06/2021		REV 03
01/16/2022		REV 04
03/25/2022		REV 05

SHEET NUMBER
A1.1
FLOOR PLAN



03/25/2022

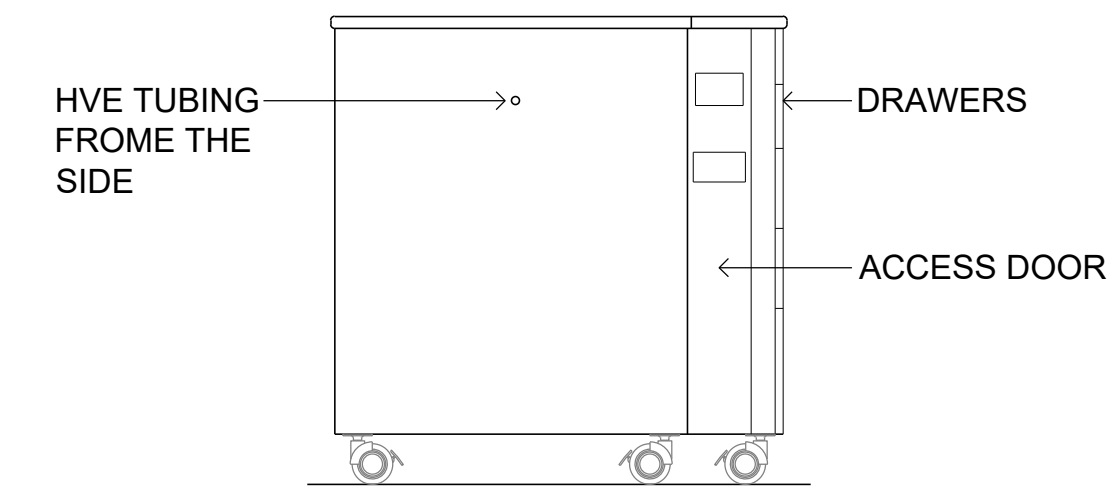
PROJECT NO. 210407

DRAWING ISSUANCE

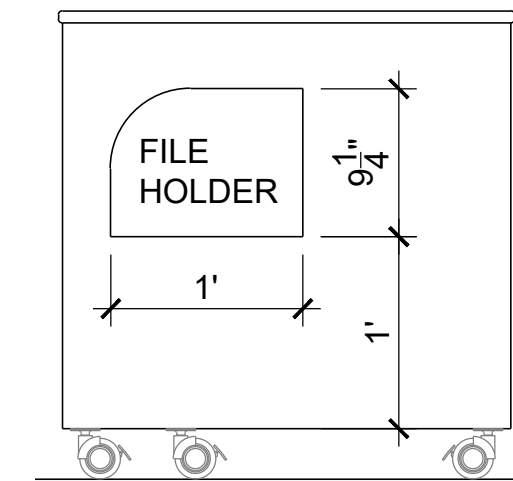
01/19/2022 REV 04
03/25/2022 REV 05

SHEET NUMBER

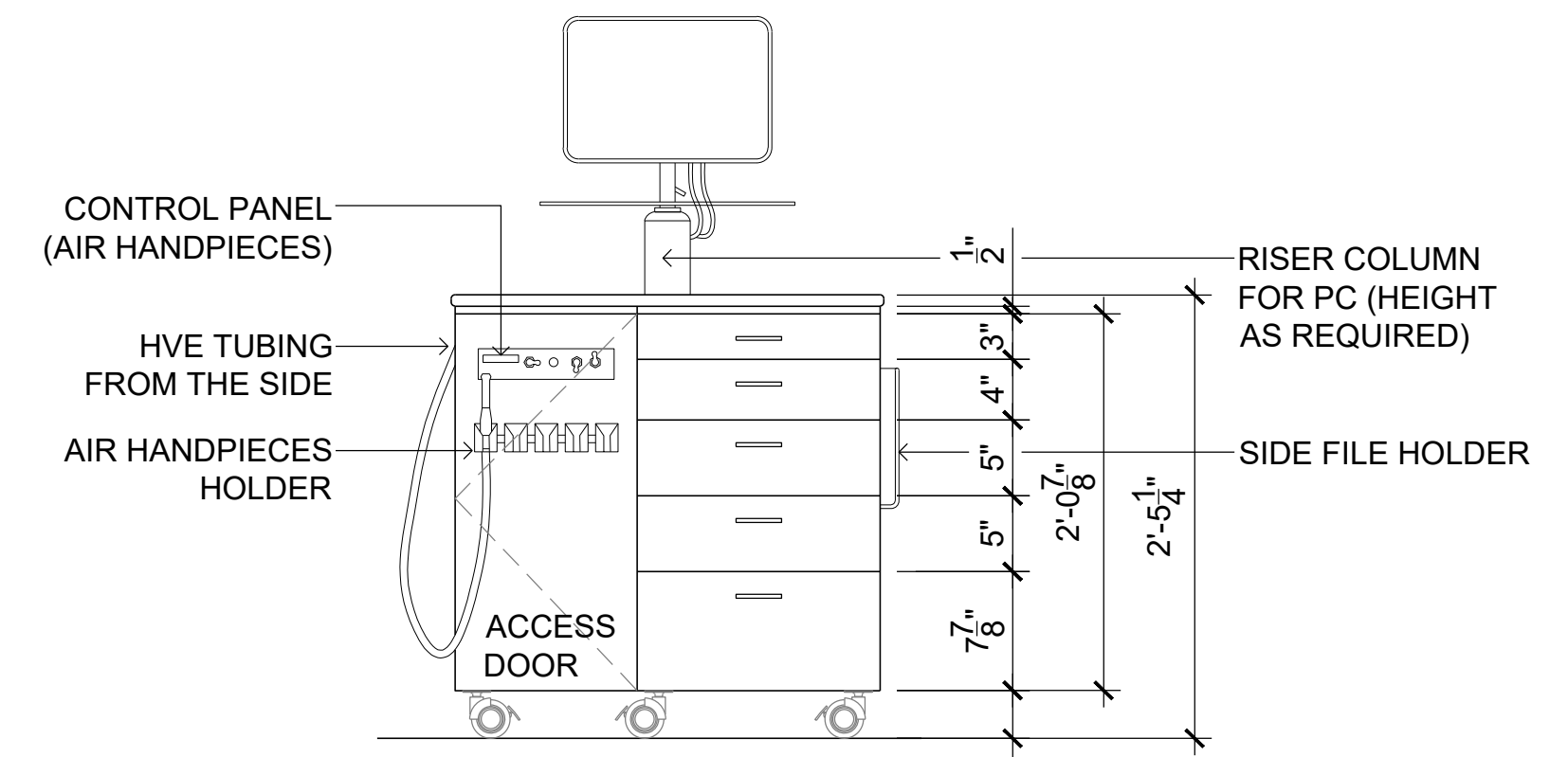
A2.1
ELEVATIONS



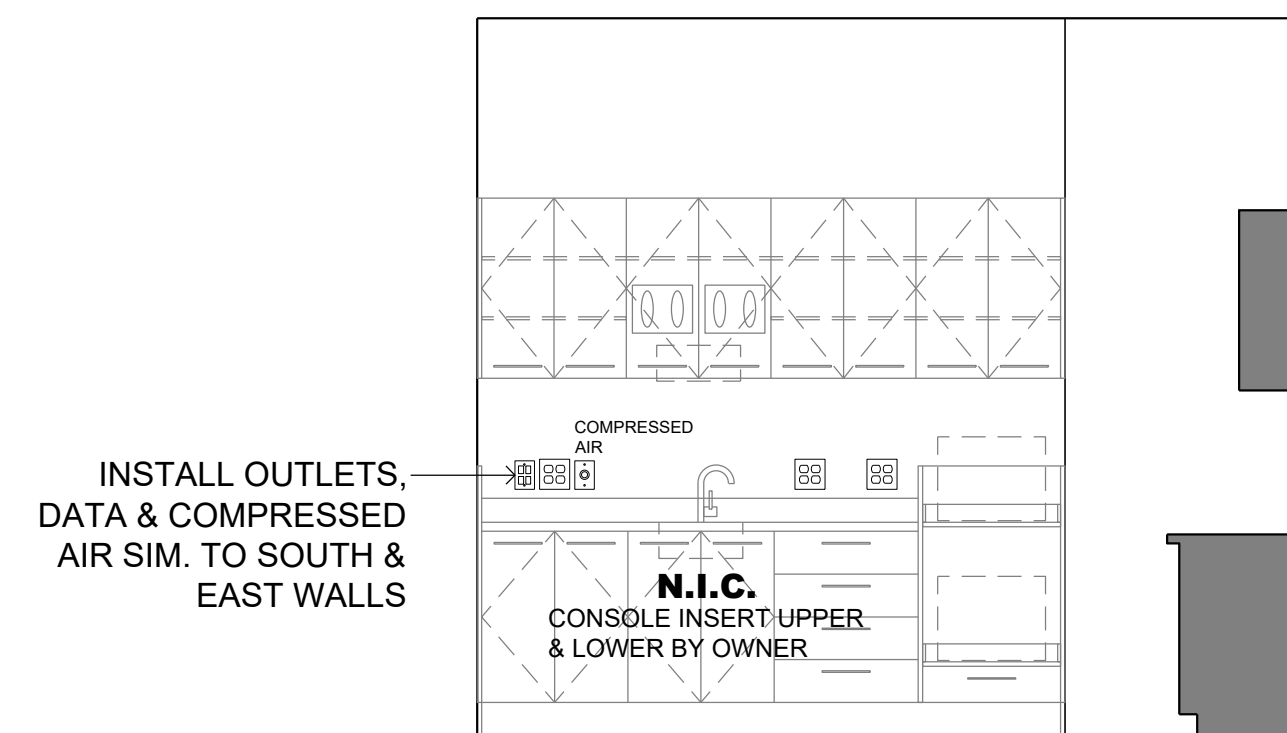
4 ELEVATION
SCALE: 1" = 1'-0" SIDE



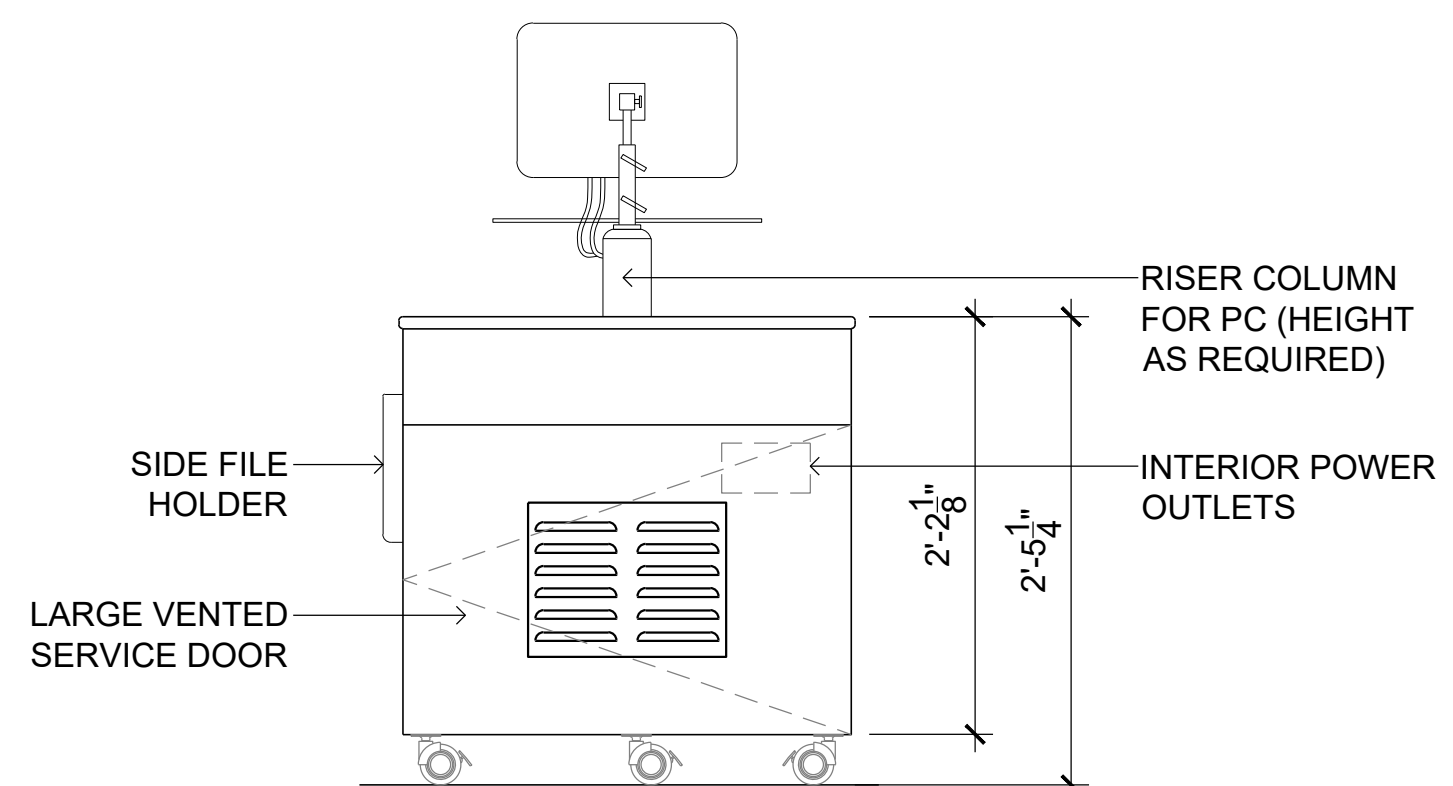
3 ELEVATION
SCALE: 1" = 1'-0" SIDE



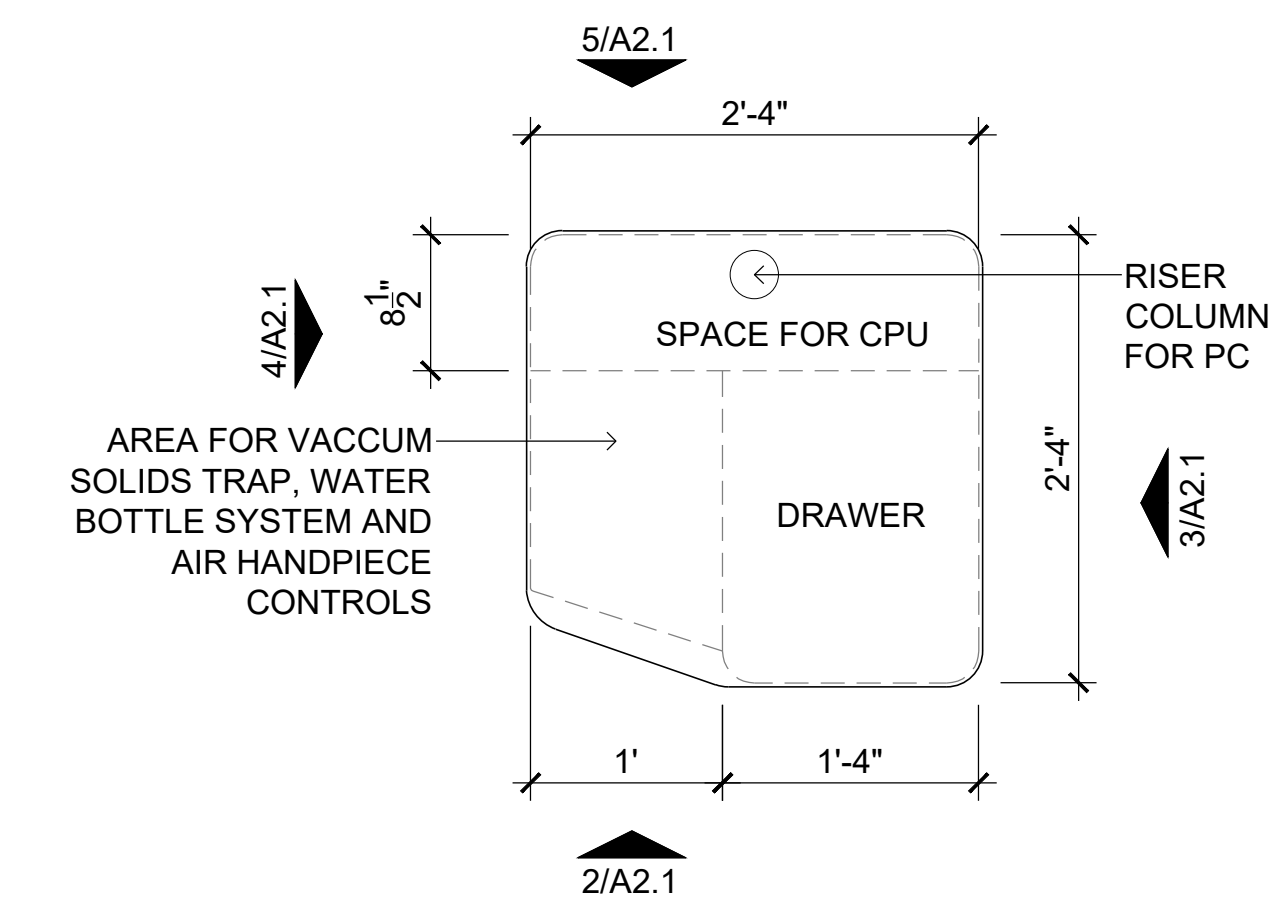
2 ELEVATION
SCALE: 1" = 1'-0" FRONT



6 ELEVATION
SCALE: 3/8" = 1'-0" STER/LAB



5 ELEVATION
SCALE: 1" = 1'-0" REAR



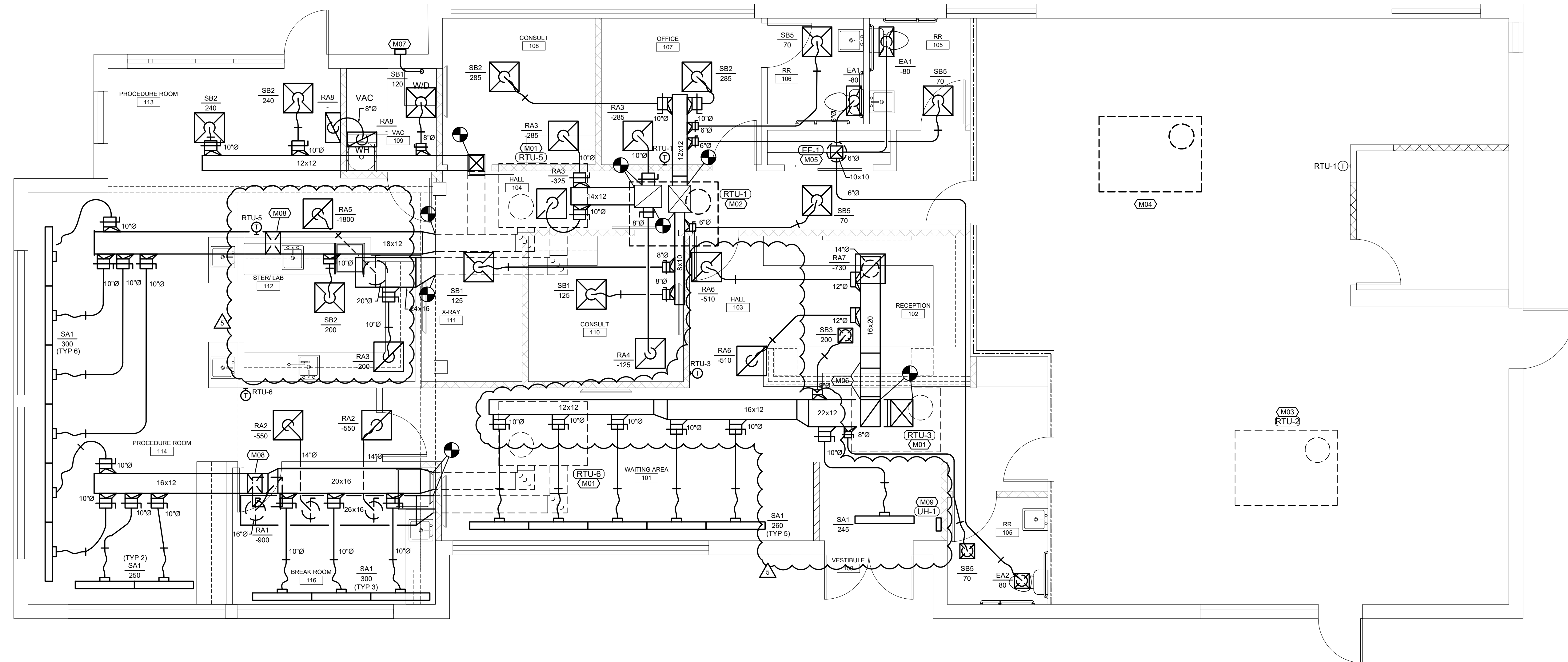
1 PLAN
SCALE: 1" = 1'-0" PORTABLE ORTHODONTIST CABINET

NOTES

- COUNTERTOP:
3/4" QUARTZ COUNTERTOP
- CASTER:
CA54PC - 3-5/32" HOLLOW WHEEL CASTER, POLISHED CHROME W/ BRAKE & PLATE - MOCKETT
- DRAWERS:
FIT WITH AUTOCLAVABLE DRAWER ORGANISERS, PLIER HOLDERS, ARCHWIRE HOLDERS, BALL BEARING SLIDE, HAFELE MATRIX RUNNER BBA45, STEEL, SIDE MOUNTING



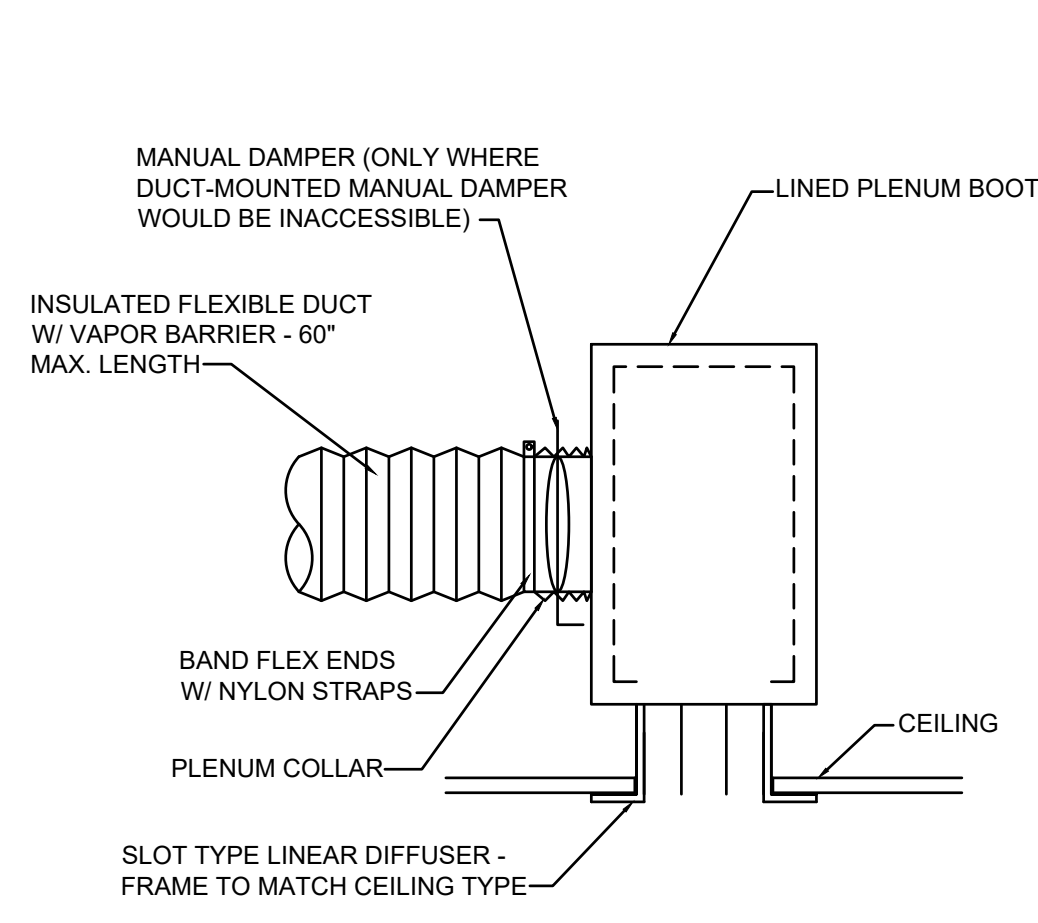
08/13/2021	PERMIT
09/03/2021	REV 01
10/05/2021	REV 03
01/19/2022	REV 04
03/25/2022	REV 05



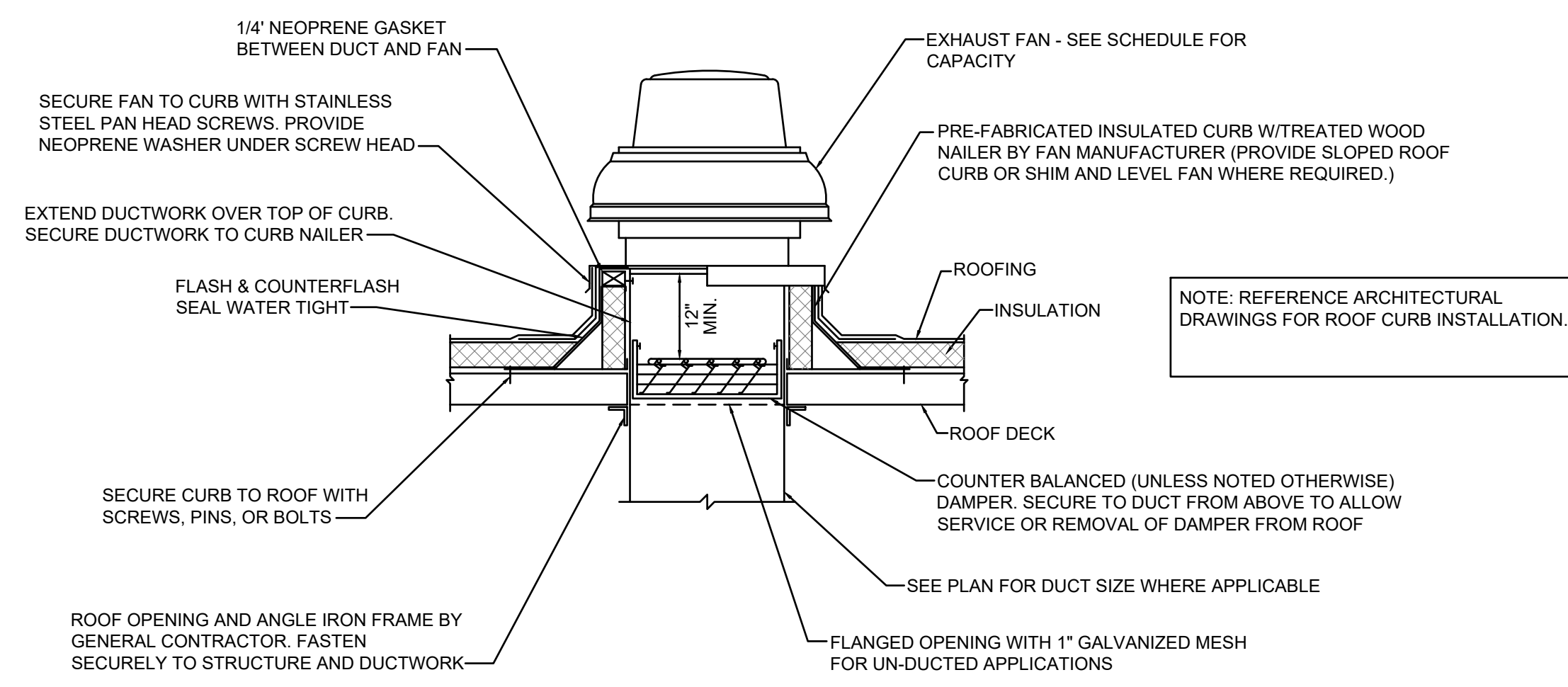
FLOOR PLAN-MECHANICAL
SCALE: 1/4"=1'-0"

(M##) FLOOR PLAN NOTES

1. EXISTING ROOFTOP UNIT TO REMAIN. REMOVE ALL ASSOCIATED DUCTWORK, DIFFUSERS AND THERMOSTAT. FIELD VERIFY EXACT LOCATION OF UNIT AND PROVIDE NEW DUCTWORK AS SHOWN. CLEAN UNIT, GREASE ALL BEARINGS, LEAK-CHECK AND CHARGE REFRIGERANT SYSTEM, REPLACE FILTERS, AND CLEAN OUTDOOR AND INDOOR COILS. PROVIDE FLEXIBLE CONNECTORS ON THE SUPPLY AND RETURN AIR DUCT CONNECTIONS. TRANSITION TO DUCT SIZES SHOWN.
2. REMOVE EXISTING 5-TON ROOFTOP UNIT AND ALL ASSOCIATED DUCTWORK, DIFFUSERS AND THERMOSTAT. PROVIDE NEW 3-TON ROOFTOP UNIT IN SAME LOCATION PROVIDING CURB ADAPTER AS REQUIRED. PROVIDE CURB ADAPTER, SHIM UNIT AND CURB LEVEL FOR PROPER CONDENSATE DRAINAGE. PROVIDE FLEXIBLE CONNECTORS ON SUPPLY AND RETURN AIR DUCT CONNECTIONS. TRANSITION TO DUCT SIZES SHOWN.
3. EXISTING ROOFTOP UNIT TO REMAIN. REMOVE ALL ASSOCIATED DUCTWORK, DIFFUSERS AND THERMOSTAT. CLEAN UNIT, GREASE ALL BEARINGS, LEAK-CHECK AND CHARGE REFRIGERANT SYSTEM, REPLACE FILTERS, AND CLEAN OUTDOOR AND INDOOR COILS. PROVIDE FLEXIBLE CONNECTORS ON THE SUPPLY AND RETURN AIR DUCT CONNECTIONS. INSTALL NEW THERMOSTAT IN LOCATION SHOWN PROVIDING AN ADDITIONAL 20FT. OF WIRING FOR FUTURE RELOCATION.
4. REMOVE EXISTING PACKAGED ROOFTOP UNIT, ROOF CURB, ALL ASSOCIATED DUCTWORK, DIFFUSERS AND THERMOSTAT.
5. PROVIDE ROOF MOUNTED EXHAUST FAN AND CURB. FAN SHALL BE INTERLOCKED WITH LIGHTS. COORDINATE WITH ELECTRICIAN.
6. REMOVE EXISTING ROUND TAPS AT THE BOTTOM RETURN AIR OPENING FROM THE ROOFTOP UNIT. TRANSITION DUCT TO SIZE SHOWN ROUTE RETURN DUCT BETWEEN JOIST. DUCTWORK WILL NEED TO TRANSITION DOWN IN ORDER TO FIT ROUND TAPS TO RETURN GRILLES.
7. PROVIDE 4" Ø DRYER VENT EXHAUST DUCT EXTENDED TO THE EXTERIOR WALL. PROVIDE DRYER VENT CAP WITH FLASHED AND SEALED WITH EXTERIOR WALL.
8. ELBOW DUCT UP AND ROUTE ABOVE CEILING.
9. PROVIDE RECESSED WALL MOUNTED HEATER.



LINEAR DIFFUSER DETAIL
NO SCALE



ROOF MOUNTED EXHAUST FAN DETAIL
NO SCALE

ROOFTOP UNIT SCHEDULE (GAS-FIRED)

MARK NO.	MANUFACTURER	NEW/ EXISTING	MODEL	AIRFLOW CFM	MIN O.A. CFM	EXT. S.P. (IN W.G.)	COOLING					HEATING-GAS				ELECTRICAL			HP	NOTES			
							AMB. (°F)	E.D.B. (°F)	E.W.B. (°F)	L.D.B. (°F)	L.W.B. (°F)	TOTAL MBH	SENS. MBH	STAGES	EER	INPUT MBH	OUTPUT MBH	STAGES			VOLT	ø	HZ
RTU-1	LENNOX	NEW	KGA036	1030	155	0.5	105	78	66.2	57	56.5	35	28	1	10.7	65	52	1	208	3	60	1	1-4
RTU-2	LENNOX	EXISTING	KGA062	3000	450	-	105	78	66.2	57	56.5	90	72	-	-	160	144	2	208	3	60	-	4-5
RTU-3	LENNOX	EXISTING	KGA060	1815	285	-	105	78	66.2	57	56.5	58	46.4	-	-	150	120	2	208	3	60	-	4-5
RTU-5	LENNOX	EXISTING	GCS16-060	2000	320	-	105	78	66.2	57	56.5	58	46.4	-	-	120	96	1	208	3	60	-	4-5
RTU-6	LENNOX	EXISTING	GCS16-060	2000	300	-	105	78	66.2	57	56.5	58	46.4	-	-	120	96	1	208	3	60	-	4-5

NOTES:
 1. PROVIDE WITH WALL MOUNTED 24/7 PROGRAMMABLE THERMOSTAT, DISCONNECT SWITCH, AND CONDENSATE DRAIN TRAP.
 2. PROVIDE WITH 2" MERV 8 FILTERS.
 3. PROVIDE WITH DRY BULB ECONOMIZER. INCLUDE WITH BAROMETRIC RELIEF DAMPER.
 4. PROVIDE WITH CURB ADAPTER. FIELD VERIFY DIMENSIONS OR EXISTING CURB.
 5. PROVIDE NEW WALL MOUNTED 24/7 PROGRAMMABLE THERMOSTAT.

FAN SCHEDULE

MARK NO.	MANUFACTURER	MODEL	TYPE	AIRFLOW (CFM)	S.P. (IN W.G.)	FAN TYPE	RPM	DRIVE	ELECTRICAL			HP/ WATTS	NOTES
									VOLT	ø	HZ		
EF-1	GREENHECK	CUE-070D	DOWNBLAST	240	0.3	CBT	1550	DIRECT	120	1	60	130	1

NOTES: 1. PROVIDE WITH ROOF CURB AND DISCONNECT SWITCH.

DIFFUSER SCHEDULE

MARK	MANUFACTURER	MODEL	FACE SIZE (IN)	NECK SIZE (IN)	NO. OF SLOTS	FRAME TYPE*	FINISH	NOTES
SA1	PRICE	SOS100	6x8	10"	3 (1")	LAY-IN	WHITE	1
SB1	PRICE	SFD	24x24	8"	NA	LAY-IN	WHITE	-
SB2	PRICE	SFD	24x24	10"	NA	LAY-IN	WHITE	-
SB3	PRICE	SFD	12x12	8"	NA	SURFACE	WHITE	2
SB4	PRICE	SFD	12x12	6"	NA	SURFACE	WHITE	2
SB5	PRICE	SFD	24x24	6"	NA	LAY-IN	WHITE	-
RA1	PRICE	PDOR	24x24	16"	NA	LAY-IN	WHITE	-
RA2	PRICE	PDOR	24x24	14"	NA	LAY-IN	WHITE	-
RA3	PRICE	PDOR	24x24	10"	NA	LAY-IN	WHITE	-
RA4	PRICE	PDOR	24x24	8"	NA	LAY-IN	WHITE	-
RA5	PRICE	PDOR	24x24	20"	NA	LAY-IN	WHITE	-
RA6	PRICE	PDOR	24x24	12"	NA	LAY-IN	WHITE	2
RA7	PRICE	PDOR	24x24	14"	NA	LAY-IN	WHITE	2
RA8	PRICE	PDOR	24x12	8"	NA	LAY-IN	WHITE	-
EA1	PRICE	PDOR	24x12	6"	NA	LAY-IN	WHITE	3
EA2	PRICE	PDOR	12x12	6"	NA	LAY-IN	WHITE	2

NOTES:
 1. PROVIDE WITH INSULATED SUPPLY PLENUM.
 2. PROVIDE WITH OPPOSED BLADE DAMPER AND PLASTER FRAME.
 3. PROVIDE WITH OPPOSED BLADE DAMPER.

*CONTRACTOR SHALL VERIFY CEILING TYPE PRIOR TO ORDERING DIFFUSERS.

UNIT HEATER SCHEDULE

MARK NO.	MANUFACTURER	MODEL	TYPE	AIRFLOW (CFM)	HEATING (ELEC)		ELECTRICAL			NOTES
					OUTPUT (KW)	INPUT (KW)	VOLT	ø	HZ	
UH-1	QMARK	QDF-558	CEILING	65	6.8	2	208	1	60	ALL

NOTES: 1. PROVIDE WITH INTEGRAL THERMOSTAT, DISCONNECT SWITCH, AND INTEGRAL WALL MOUNTING KIT.

*HEATING KW IS NET CAPACITY AT VOLTAGE AND PHASE INDICATED.

GENERAL NOTES (TYPICAL ALL SHEETS)

- MECHANICAL CONTRACTOR IS RESPONSIBLE TO SEE THAT WORK MEETS AND IS IN ACCORDANCE WITH ALL REQUIREMENTS OF FEDERAL, STATE, AND LOCAL LAWS AND CODES AND/OR REQUIREMENTS, INCLUDING HEALTH CODES AND BUILDING OWNER.
- CUTTING AND PATCHING OF FLOORS, WALLS, CEILING, ETC., REQUIRED IN STRICT ACCORDANCE WITH THE RULES AND REGULATIONS OF THE ARCHITECT'S AND/OR BUILDING OWNER REQUIREMENTS.
- COORDINATE ALL WORK WITH OTHER TRADES PRIOR TO INSTALLATION TO AVOID ROUTING CONFLICTS.
- ANY MATERIAL REMOVED THAT OWNER DOES NOT WISH TO RETAIN SHALL BE REMOVED FROM PROJECT SITE AND DISPOSED OF BY CONTRACTOR.
- MECHANICAL CONTRACTOR SHALL AIR BALANCE ALL GRILLES TO CFMS SHOWN ON PLANS.
- MECHANICAL CONTRACTOR SHALL PROVIDE NEW 1" FARR TYPE PLEATED FILTERS ON ALL ROOFTOP UNITS WHICH ARE IN PROJECT SCOPE OF WORK PRIOR TO BALANCING. PROVIDE TEMPORARY FILTERS ON RETURN AIR OPENINGS DURING CONSTRUCTION.
- UPON REQUEST FOR ELECTRONIC FILES, CONTRACTOR SHALL FILL OUT, SIGN AND RETURN ELECTRONIC MEDIA RELEASE FORM FROM ENGINEER AND PROVIDE PAYMENT FOR FEES STIPULATED ON ELECTRONIC MEDIA RELEASE FORM. UPON RECEIPT OF COMPLETED RELEASE FORM AND PAYMENT, ELECTRONIC FILES WILL BE RELEASED.
- REPLACE EXISTING THERMOSTATS/SENSORS WITH NEW. THERMOSTAT COVERS SHALL BE WHITE IN COLOR UNLESS OTHERWISE NOTED. THERMOSTATS/SENSORS SHALL BE INSTALLED AND CALIBRATED PRIOR TO TEST AND BALANCE. INTEGRATE NEW DIGITAL THERMOSTATS/SENSORS INTO THE EXISTING BUILDING ENERGY MANAGEMENT SYSTEM AS REQUIRED.

MECHANICAL SYMBOLS

- OR EXISTING DUCTWORK TO BE REMOVED
- OR EXISTING DUCTWORK TO REMAIN
- OR NEW DUCTWORK
- SUPPLY DUCT
- RETURN DUCT
- EXHAUST DUCT
- SUPPLY DIFFUSER
- RETURN GRILLE
- EXHAUST GRILLE
- THERMOSTAT
- MANUAL VOLUME DAMPER
- SUPPLY DUCT DOWN
- SUPPLY DUCT UP
- RETURN DUCT DOWN
- RETURN DUCT UP
- EXHAUST DUCT DOWN
- EXHAUST DUCT UP
- FLEXIBLE DUCT CONNECTION
- AHU-1 EQUIPMENT TYPE AND DESIGNATION
- SA MARK NO. SUPPLY (S), RETURN (R), EXHAUST (E)
- 200 CFM CONNECT TO EXISTING



Dev Anand
President & CEO

Kevin Campbell
Senior Architect

8807 Monrovia Street
Lenexa, Kansas 66215

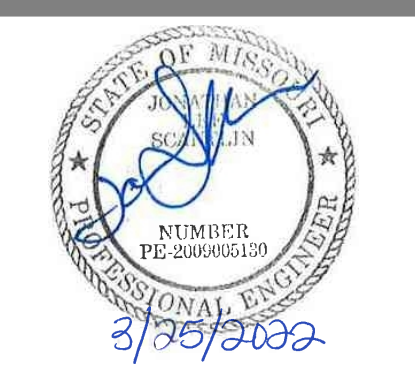
Phone: 913.322.8882
Fax: 913.322.8886
Email: kevin@dev-inc.com

THIS DRAWING has been prepared by the Architect, or prepared under his direct supervision as an instrument of service and is intended for use only on this project. All Drawings, Specifications, Ideas and designs, including the overall layout, form, arrangement, and composition of spaces and elements portrayed, constitute the original, unpublished work of the Architect. Any reproduction, use, or disclosure of the information contained herein without the written consent of the Architect is strictly prohibited.

COMPLY WITH all laws, codes, ordinances and regulations with authorities having jurisdiction and with requirements of the Landlord, if applicable. Do not start work until all permits and required approvals are obtained.

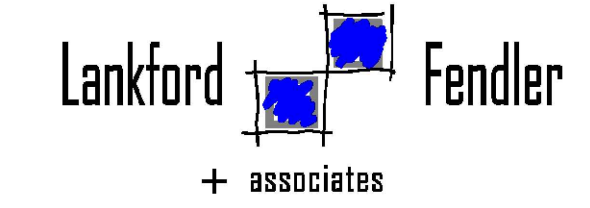


A TENANT FINISH FOR:
LAKWOOD ORTHODONTICS
 1399 NE DOUGLAS ST
 LEE'S SUMMIT, MO 64086



PROJECT NO. 210407
DRAWING ISSUANCE

DATE	REVISION
08/13/2021	PERMIT
09/03/2021	REV 01
10/06/2021	REV 02
01/19/2022	REV 03
03/25/2022	REV 04
	REV 05

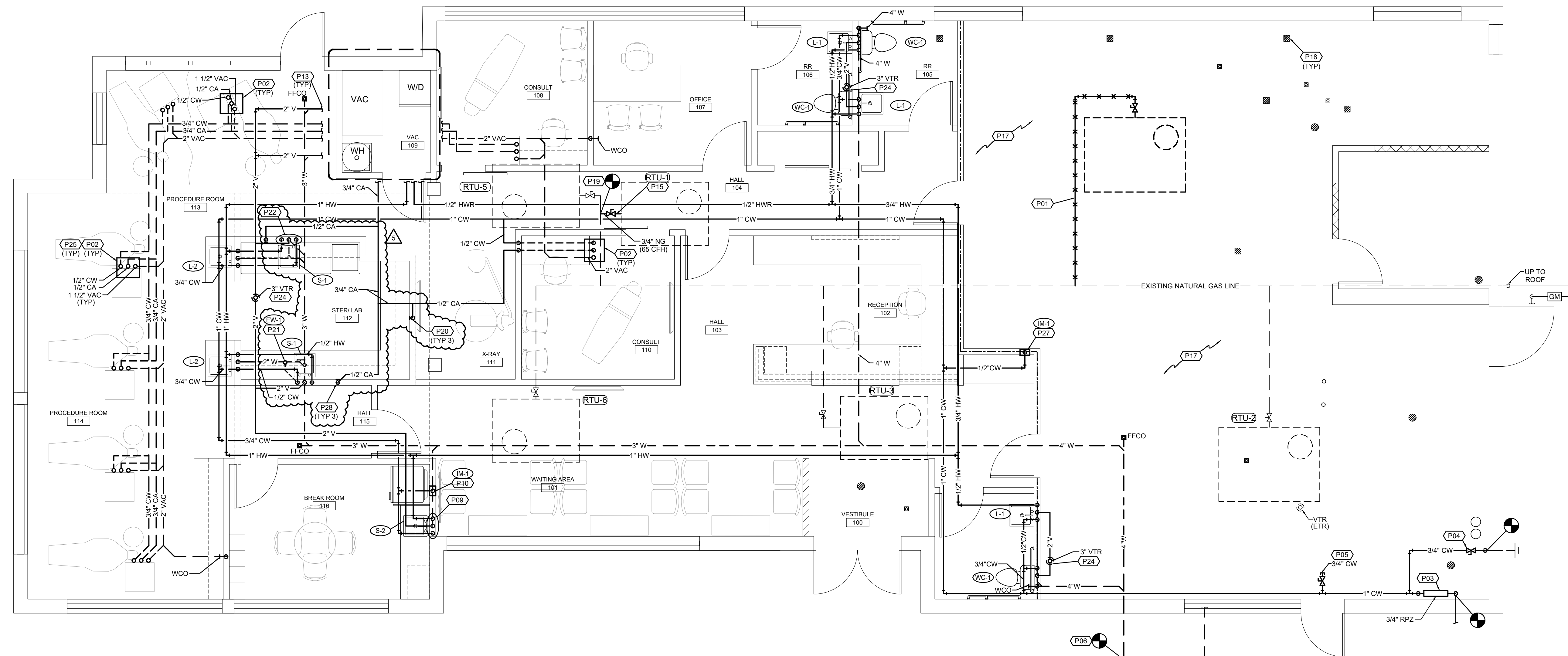


1730 Walnut Street Kansas City, Missouri 64108
 1915 Frederick Avenue, St. Joseph, Missouri 64501
 Phone: 816.221.1411 | Fax: 816.221.1429
 LANKFORD | FENDLER + ASSOCIATES, CONSULTING ENGINEERS, INC.
 COPYRIGHT © 2021 Project No. 21-0535-00
 C01 No. 2006001168

SHEET NUMBER
M2.0
 MECHANICAL
 DETAILS

THIS DRAWING has been prepared by the Architect, or prepared under his direct supervision as an instrument of service and is intended for use only on this project. All Drawings, Specifications, Ideas and designs, including the overall layout, form, arrangement, and composition of spaces and elements portrayed, constitute the original, unpublished work of the Architect. Any reproduction, use, or disclosure of the information contained herein without the written consent of the Architect is strictly prohibited.

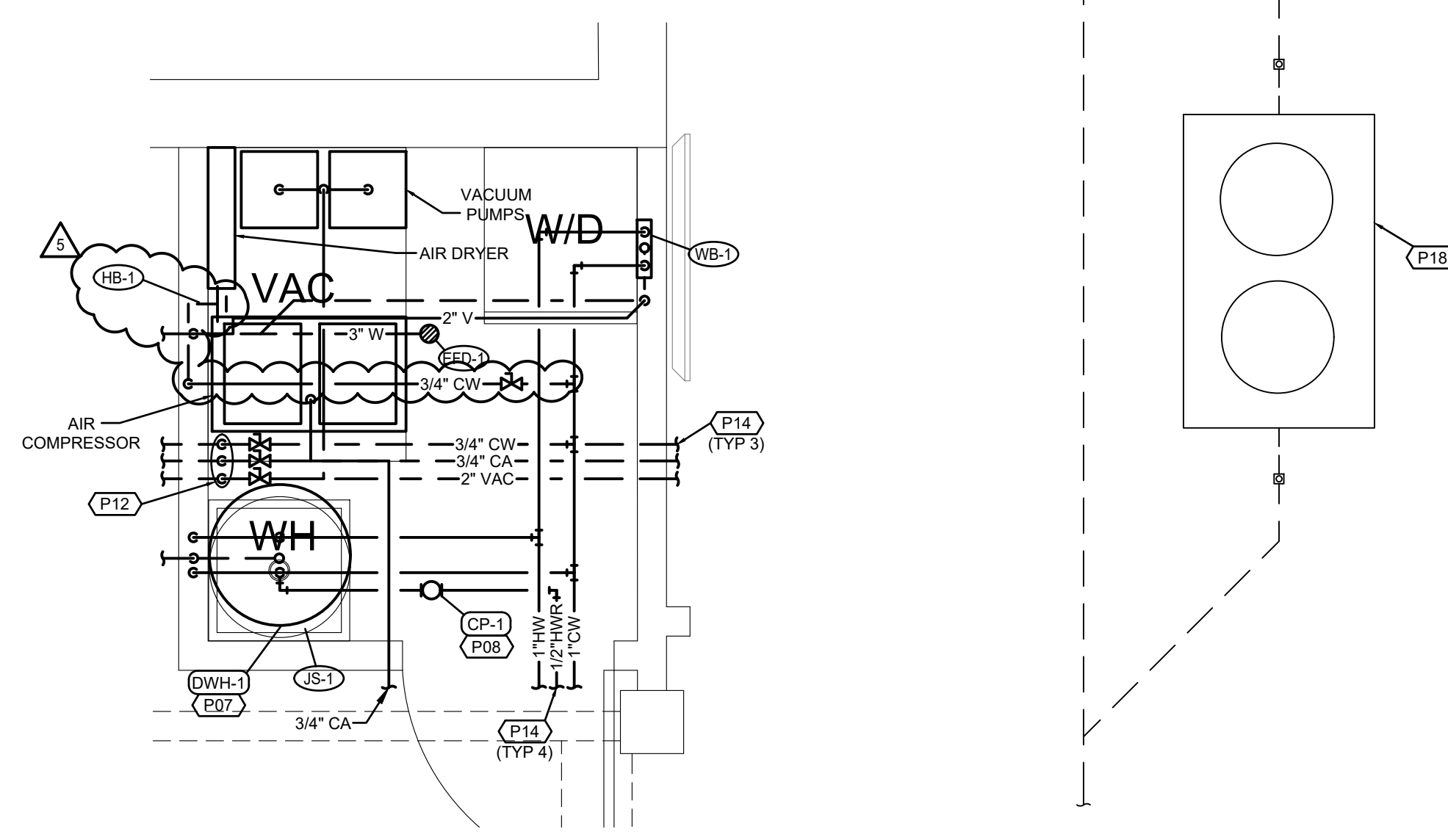
COMPLY WITH all laws, codes, ordinances and regulations with authorities having jurisdiction and with requirements of the Landlord, if applicable. Do not start work until all permits and required approvals are obtained.



FLOOR PLAN-PLUMBING
SCALE: 1/4"=1'-0"

FLOOR PLAN NOTES

- EXISTING INACTIVE NG PIPING TO BE REMOVED AND CAPPED BACK TO MAIN.
- TERMINAL BOX BY OTHERS. PROVIDE ACCESSORIES AND SHUT-OFF VALVES FOR CHAIR CONNECTIONS. MAKE FINAL CONNECTIONS TO EQUIPMENT. COORDINATE TERMINAL BOX LOCATIONS WITH OWNER AND GENERAL CONTRACTOR PRIOR TO CONSTRUCTION.
- PROVIDE NEW 1" RPZ BACKFLOW PREVENTER, WATTS 009 OR EQUIVALENT. INSTALL PER MANUFACTURER'S REQUIREMENTS. PROVIDE DRAIN LINE FROM BACKFLOW PREVENTER TO NEAREST FLOOR DRAIN. RE: DETAIL.
- CONNECT TO EXISTING WALL HYDRANT. PROVIDE ACCESSIBLE SHUT-OFF VALVE. PROVIDE 3/4" CW STUB-OUT FOR FUTURE TENANT.
- CONNECT TO NEAREST EXISTING WASTE PIPING OF EQUAL OR GREATER SIZE. CONTRACTOR TO FIELD VERIFY EXACT SIZE, LOCATION AND ELEVATION OF EXISTING PIPING PRIOR TO CONSTRUCTION.
- PROVIDE NEW ELECTRIC WATER HEATER MOUNTED FROM ABOVE CEILING. INSTALL PER MANUFACTURER'S REQUIREMENTS. PROVIDE FULL SIZED DRAIN LINES FROM DRAIN PAN AND 1/2" RELIEF VALVE TO HOP SINK AND INDIRECT WASTE. RE: DETAIL.
- PROVIDE HOT WATER RECIRCULATING PUMP SUSPENDED FROM STRUCTURE UTILIZING ALL THREAD RODS. INSTALL PER MANUFACTURER'S REQUIREMENTS.
- 1/2" CW AND HW DOWN IN WALL TO SINK FAUCET. 2" W DOWN, 1 1/2" V UP. ROUTE PIPING UNDER CABINET TO FIXTURE.
- 1/2" CW DOWN IN WALL TO ICE-MAKER BOX.
- PROVIDE ACCESSIBLE SHUT-OFF VALVES FOR CW, CA AND VAC.
- 3/4" CW, 3/4" CA AND 2" VAC DOWN. ROUTE CW, CA AND VAC PIPING UNDERGROUND AS SHOWN ON FLOOR PLAN.
- REFER TO ENLARGEMENT FOR CONTINUATION.
- REFER TO OVERALL PLAN FOR CONTINUATION.
- CONNECT 3/4" NG TO ROOF TOP UNIT WITH GAS COCK, DIRT LEG AND UNION.
- EXISTING FLOOR DRAINS/SINKS TO BE PLUGGED.
- EXISTING INACTIVE NG PIPING FROM KITCHEN EQUIPMENT TO BE REMOVED AND CAPPED BACK TO MAIN SOURCE.
- EXISTING GREASE INTERCEPTOR AND ALL ASSOCIATED APPURTENANCES TO BE REMOVED. CAP ALL PIPING CONNECTIONS WATER TIGHT.
- CONNECT TO NEAREST EXISTING NATURAL GAS PIPING OF EQUAL OR GREATER SIZE. CONTRACTOR TO FIELD VERIFY EXACT SIZE, LOCATION AND ELEVATION OF EXISTING PIPING PRIOR TO CONSTRUCTION.
- COORDINATE FINAL LOCATION OF CA WALL OUTLET WITH OWNER PRIOR TO CONSTRUCTION.
- 1/2" CW TO EMERGENCY EYE WASH. ROUTE PIPING UNDER COUNTER. COORDINATE FINAL LOCATION OF EMERGENCY EYE WASH WITH OWNER PRIOR TO CONSTRUCTION.
- 3/4" CW AND 3/4" HW DOWN IN WALL. ROUTE 1/2" CW AND HW TO SINK FAUCET AND 1/2" CW AND HW TO EMERGENCY EYE WASH. 2" W DOWN, 1 1/2" V UP.
- CONNECT TO NEAREST EXISTING VENT THRU ROOF PIPING OF EQUAL OR GREATER SIZE. CONTRACTOR TO FIELD VERIFY EXACT SIZE, LOCATION AND ELEVATION OF PIPING.
- KEEP VENT THRU ROOF 10' MINIMUM FROM FRESH AIR INTAKES.
- PROVIDE WATTS MODEL LF288A-1/2" LEAD FREE ANTI-SIPHON VACUUM BREAKER CONFIRMING WITH ANSI A112.1.1, ASSE 1001, AND CSA B64.
- 3/4" CW AND HW DOWN IN WALL. ROUTE 1/2" CW AND HW TO SINK FAUCET AND 1/2" CW TO WATER CLOSET.
- 1/2" DOWN IN WALL TO ICE-MAKER BOX. ROUTE 1/2" CW TO COFFEE MAKER. PROVIDE ACCESSIBLE DOUBLE CHECK VALVE AND DEDICATED SHUT-OFF VALVE. MAKE FINAL CONNECTION TO APPLIANCE.
- PROVIDE BEACONMEDAES TYPE B CA OUTLET. COORDINATE FINAL PLUG STYLE AND LOCATION WITH OWNER.



VAC ROOM ENLARGEMENT
SCALE: 1/2"=1'-0"

PLUMBING PUMP SCHEDULE

MARK NO.	MANUFACTURER	MODEL	USE	TYPE	FLOW (GPM)	HEAD (FT.)	RPM	ELECTRICAL				NOTES
								VOLT	Ø	HZ	HP	
CR-1	BELL & GOSSETT	PL30B	RECIRC	IN-LINE	1	15	2450	120	1	60	1/12	1

NOTES: 1. PROVIDE WITH AQUASTAT AND AUTOMATIC TIMER KIT.

PLUMBING FIXTURE SCHEDULE

MARK NO.	FIXTURE TYPE	MANUFACTURER	MODEL NO.	DESCRIPTION	MINIMUM CONNECTION SIZE			
					CW	HW	WASTE	VENT
WC-1	WATER CLOSET (ADA)	AMERICAN-STANDARD	215A.004 "CADET PRO"	FLOOR MOUNTED FLUSH TANK, WHITE VITREOUS CHINA, HIGH EFFICIENCY (1.6 GPF), ELONGATED POWER WASH BOWL, FULLY GLAZED 2" TRAP WAY, CLOSE COUPLED TANK, 16-1/2" RM HEIGHT. ACCESSORIES: CHROME FRONT SEAT LESS COVER WITH SELF SUSTAINING CHECK RINGS, BOLTS AND CAPS, LOOSE KEY ANGLE STOP AND CHROME-PLATED RISER. NOTE: HANDLE TO BE ON WIDE SIDE OF FIXTURE.	1/2"	-	4"	2"
L-1	LAVATORY (ADA)	AMERICAN-STANDARD	0356.421 "LUCERNE"	VITREOUS CHINA, 20" X 18", FRONT OVERFLOW, INTEGRAL BACK CHICAGO FAUCETS MODEL 2200-E2805A BCP DECK MOUNTED, SINGLE-HOLE CERAMIC DISC MIXING FAUCET WITH 4-3/4" SPOUT WITH SINGLE LEVER HANDLE AND VANAL RESISTANT NON-ABRATING OUTLET (0.5 GPM). ACCESSORIES: PROVIDE LEONARD 170-LF LEAD FREE BRONZE THERMOSTATIC MIXING VALVE WITH 0.25 GPM MINIMUM FLOW RATE, INTEGRAL CHECK VALVES, DISCHARGE SET AT 105 F, MOUNTED DOWNSTREAM OF FIXTURE STOPS, WITH HOT AND COLD WATER PIPED TO VALVE, TEMPERED AND COLD WATER TO LAVATORY. CHICAGO FAUCETS MODEL 327-XCP GRID DRAIN, 1-1/4" X 1-1/2" 17 GA. SEMI-CAST BRASS P-TRAP WITH CLEANOUT, CHROME-PLATED RISERS WITH LOOSE KEY ANGLE STOPS AND J.R. SMITH CONCEALED ARM LAVATORY SUPPORT. PROVIDE WITH FULLY MOLDED FLEXIBLE VINYL INSULATION KIT COVER TRAP, SUPPLIES AND STOPS, TRIBURO E-Z LAV GUARD. NOTE: MOUNT FIXTURE RM 3/4" ABOVE FINISHED FLOOR.	1/2"	1/2"	1-1/2"	1-1/2"
L-2	LAVATORY (ADA)	AMERICAN-STANDARD	475.047 "AQUALYN"	COUNTERTOP, VITREOUS CHINA, 20" X 17" OVAL, FRONT OVERFLOW, SELF-RIMMING. CHICAGO FAUCETS MODEL 2200-E2805A BCP DECK MOUNTED, SINGLE-HOLE CERAMIC DISC MIXING FAUCET WITH 4-3/4" SPOUT WITH SINGLE LEVER HANDLE AND VANAL RESISTANT NON-ABRATING OUTLET (0.5 GPM). ACCESSORIES: PROVIDE LEONARD 170-LF LEAD FREE BRONZE THERMOSTATIC MIXING VALVE WITH 0.25 GPM MINIMUM FLOW RATE, INTEGRAL CHECK VALVES, DISCHARGE SET AT 105 F, MOUNTED DOWNSTREAM OF FIXTURE STOPS, WITH HOT AND COLD WATER PIPED TO VALVE, TEMPERED AND COLD WATER TO LAVATORY. CHICAGO FAUCETS MODEL 327-XCP GRID DRAIN, 1-1/4" X 1-1/2" 17 GA. SEMI-CAST BRASS P-TRAP WITH CLEANOUT AND CHROME-PLATED RISERS WITH LOOSE KEY ANGLE STOPS. PROVIDE WITH FULLY MOLDED FLEXIBLE VINYL INSULATION KIT TO COVER TRAP, SUPPLIES AND STOPS, TRIBURO E-Z LAV GUARD.	1/2"	1/2"	1-1/2"	1-1/2"
S-1	SINK	ELKAY	LR1722PD	SINGLE COMPARTMENT SELF RIMMING SINK, 18 GA, TYPE 304 STAINLESS STEEL, 7-5/8" DEEP BOWL, MOEN MODEL 87039 DECK MOUNTED FAUCET WITH 1255 DURALAST CARTRIDGE, SINGLE LEVER HANDLE, SINGLE HOLE MOUNTING WITH OPTIONAL DECK PLATE, AERATOR LIMITED TO 1.5 MAX. GPM, 120° SPOUT ROTATION, PULLOUT SPRAY WITH 68" BRAIDED HOSE. ACCESSORIES: ELKAY LK-35 STRAINER WITH 1-1/2" TALL REE, 1-1/2" 17 GA. SEMI-CAST BRASS P-TRAP WITH CLEANOUT, CHROME-PLATED RISERS WITH LOOSE KEY ANGLE STOPS.	1/2"	1/2"	2"	1-1/2"
S-2	SINK	ELKAY	LRAD-1918	SINGLE COMPARTMENT SELF RIMMING SINK, 18 GA, TYPE 304 STAINLESS STEEL, 6-1/2" DEEP BOWL, DELTA MODEL 9913-DST ESSA DECK MOUNTED FAUCET WITH CERAMIC OPERATING CARTRIDGE, SINGLE LEVER HANDLE, 2 FUNCTION PULL DOWN 8-5/8 SWING SPOUT WITH MAGNETIC DOCKING, DUAL CHECK AND 1.8 GPM AERATOR, 1 OR 3 HOLE MOUNTING WITH OPTIONAL DECK PLATE. ACCESSORIES: ELKAY LK-35 STRAINER WITH 1-1/2" TALL REE, 1-1/2" 17 GA. SEMI-CAST BRASS P-TRAP WITH CLEANOUT, CHROME-PLATED RISERS WITH LOOSE KEY ANGLE STOPS.	1/2"	1/2"	2"	1-1/2"
IM-1	ICE MAKER WALL BOX	SIoux CHIEF	696-G1000 SERIES	RECESSED ICE MAKER WALL BOX WITH QUARTER TURN VALVE AND 1/2" INLET, ABS COVER.	1/2"	-	-	-
EFD-1	EQUIPMENT FLOOR DRAIN	J.R. SMITH	2210Y	MEDIUM CAPACITY, MEDIUM DUTY DUCO CAST IRON BODY, SEDIMENT BUCKET AND GRATE, NO HUB OUTLET. PROVIDE WITH 3591 OVAL FUNNEL, WHERE DRAIN RECEIVES INDIRECT WASTE AND TRAP PRIMER CONNECTION.	-	-	3"	1-1/2"
EW-1	EYE WASH	GUARDAN	G1805	DECK MOUNTED SWIVEL, ACTIVATED EYE WASH WITH DUAL SPRAY HEADS AND DUST COVERS, RIGHT HAND MOUNTING, EMERGENCY SIGNAGE. ACCESSORIES: PROVIDE WITH 1/2" INLET VALVE AND STRAINER, 66020 THERMOSTATIC MIXING VALVE WITH STOP VALVES ON SUPPLIES, 13 GPM CAPACITY.	1/2"	-	-	-
WB-1	WASHER WALL BOX	SIoux CHIEF	696-2313 SERIES	RECESSED SUPPLY AND DRAIN WALL BOXES WITH QUARTER TURN VALVES, MINI SHOCK ARRESTORS, SWEAT WATER CONNECTIONS, 2" DRAIN, ABS COVERS.	1/2"	1/2"	2"	1-1/2"
JS-1	JANITOR SINK	STERN-WILLIAMS	MTB-2424	SIZE 24" X 24" X 10", TERRAZZO SERVICE SINK WITH CAST BRASS DRAIN, STAINLESS STEEL STRAINER, 3" DRAIN CONNECTION. CHICAGO FAUCETS MODEL 897-CCP WITH QUARTER OPERATING CARTRIDGE, VA CLUM BREAKER SPOUT WITH PAIL HOOK AND WALL BRACE, 3/4" MALE HOSE THREAD OUTLET, 369 LEVER HANDLES, FLANGED ADJUSTABLE SUPPLY ARM AND INTEGRAL SUPPLY STOPS AND CHECK VALVES. ACCESSORIES: V-70 EXTRUDED VINYL BUMPER GUARDS ON EXPOSED SIDES, T-35 36" RUBBER HOSE WITH STAINLESS STEEL WALL BRACKET.	1/2"	1/2"	3"	2"
HB-1	HOSE BIBB	WOODFORD	26 FAUCET	INTERIOR CHROME-PLATED BRASS, 3/4" INLET AND HOSE CONNECTION, MOUNTING FLANGE INTEGRAL ASSE DOUBLE CHECK BACKFLOW PREVENTER, METAL WHEEL HANDLE.	3/4"	-	-	-

WATER HEATER SCHEDULE (ELECTRIC)

MARK NO.	MANUFACTURER	MODEL NO.	TANK LINING	TANK CAPACITY (GAL)	RECOVERY (GPH @ 80 F)	INPUT (KW)	THERMAL EXPANSION TANK MODEL NO.	ELECTRICAL				NOTES
								VOLT	Ø	HZ	HP	
DWH-1	AO SMITH	DEL-40	GLASS	40	23	4.5	PLT-12	208	1	60	1.2	

NOTES: 1. PROVIDE WITH TEMPERATURE AND PRESSURE RELIEF VALVE AND DRAIN.
2. PROVIDE WITH CONTROL THERMAL EXPANSION TANK, WATTS MODEL, SCHEDULED WITH WATTS SCV SERVICE CHECK VALVE.

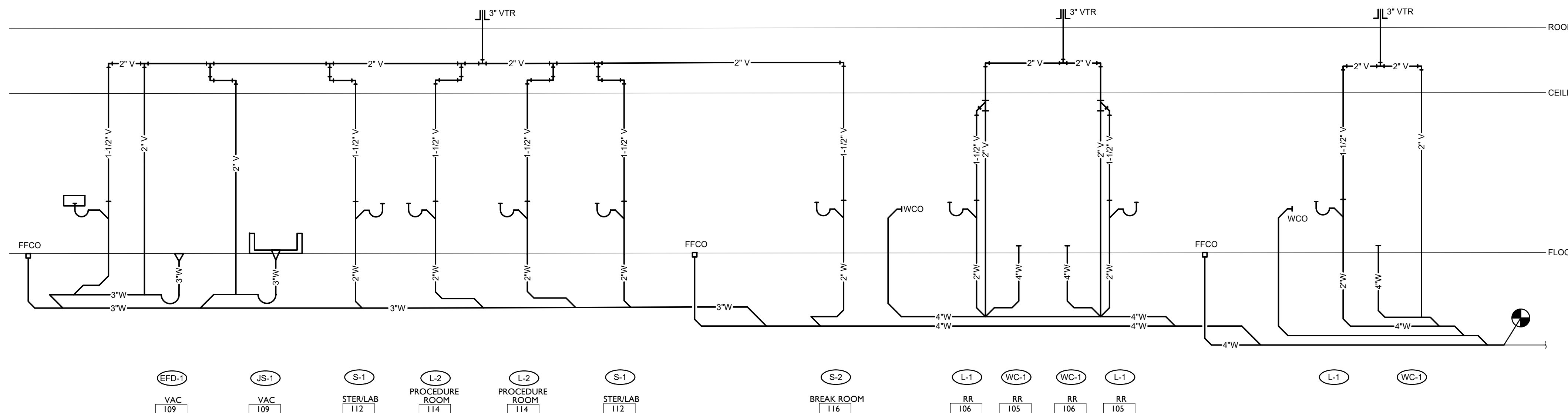
*HEATING KW IS NET CAPACITY AT VOLTAGE AND PHASE INDICATED.

GENERAL NOTES (TYPICAL ALL SHEETS)

- PLUMBING CONTRACTOR IS RESPONSIBLE TO SEE THAT WORK MEETS AND IS IN ACCORDANCE WITH ALL REQUIREMENTS OF FEDERAL, STATE, AND LOCAL LAWS AND CODES AND/OR REQUIREMENTS, INCLUDING HEALTH CODES AND BUILDING OWNER.
- ALL EXISTING PIPING SHOWN ON DRAWINGS IS SCHEMATIC AND IS BASED ON EXISTING RECORD DRAWINGS PROVIDED BY THE OWNER AND DO NOT REFLECT EXACT EXISTING CONDITIONS. CONTRACTOR TO FIELD VERIFY EXACT DEPTH AND/OR LOCATIONS ON JOB SITE. CONTRACTOR SHALL REROUTE NEW WORK TO ACCOMMODATE EXACT LOCATIONS OF EXISTING UTILITIES, STUBOUTS AND/OR CONNECTIONS.
- CUTTING AND PATCHING OF FLOORS, WALLS, CEILING, ETC., REQUIRED IN STRICT ACCORDANCE WITH THE RULES AND REGULATIONS OF THE ARCHITECT'S AND/OR BUILDING OWNER REQUIREMENTS.
- COORDINATE ALL WORK WITH OTHER TRADES PRIOR TO INSTALLATION TO AVOID ROUTING CONFLICTS.
- ANY MATERIAL REMOVED THAT OWNER DOES NOT WISH TO RETAIN SHALL BE REMOVED FROM PROJECT SITE AND DISPOSED OF BY CONTRACTOR.
- INSTALL ELASTOMERIC JOINT SEALER AROUND ALL PIPES PASSING THRU INTERIOR NON-RATED CONCRETE AND MASONRY WALLS, GYPSUM-BOARD PARTITIONS, AND CONCRETE FLOOR/ROOF SLABS. FOR FIRE RATED INTERIOR CONCRETE AND MASONRY WALLS, GYPSUM-BOARD PARTITIONS, AND CONCRETE FLOOR/ROOF SLABS SEAL ALL PIPES. INSTALL FIRESTOP MATERIALS IN ALL GAPS PRIOR TO SEALANT APPLICATION. INSTALL SEALER ACCORDING TO MANUFACTURER'S WRITTEN INSTRUCTIONS.
- PLUMBING CONTRACTOR SHALL MAKE FINAL CONNECTION TO ALL EQUIPMENT BY OTHERS. VERIFY CONNECTIONS SIZES AND REQUIREMENTS.
- PIPING ROUTED BELOW COUNTER IN CABINETS SHALL BE ROUTED AS NOTED. NOT TO INTERFERE WITH DRAWERS, SHELVES, EQUIPMENT, ETC., AND SUPPORT FROM BACK WALL OF CABINET.
- PLUMBING CONTRACTOR SHALL SCAN FLOOR UTILIZING GROUND PENETRATING RADAR PRIOR TO ANY CORE DRILLING OR SAW CUTTING OF SLAB AND SHALL VERIFY PLACEMENT WITH BUILDING OWNER'S REPRESENTATIVE PRIOR TO DRILLING.
- PLUMBING CONTRACTOR SHALL PROVIDE PRO-SET SYSTEMS 'TRAP GUARD' IN ALL FLOOR DRAIN TRAPS WITHIN PROJECT SCOPE OF WORK.
- UPON REQUEST FOR ELECTRONIC FILES, CONTRACTOR SHALL FILL OUT, SIGN AND RETURN ELECTRONIC MEDIA RELEASE FORM FROM ENGINEER AND PROVIDE PAYMENT FOR FEES STIPULATED ON ELECTRONIC MEDIA RELEASE FORM. UPON RECEIPT OF COMPLETED RELEASE FORM AND PAYMENT, ELECTRONIC FILES WILL BE RELEASED.
- ALL CABLE TIES FOR LOW VOLTAGE SYSTEMS LOCATED IN PLENUMS UTILIZED FOR AIR MOVEMENT THAT ARE NOT INSTALLED IN CONDUIT SHALL BE 25/50 FLAME AND SMOKE RATED, HELLERMANN TYTON T50 RC2UL OR EQUIVALENT.

PLUMBING SYMBOLS

	EXISTING TO REMAIN
	EXISTING TO BE REMOVED
	NEW PIPING
	CW
	HW
	HWR
	NG
	CA
	V
	-V-
	W
	-W-
	VAC
	BALANCE VALVE
	GAS SHUT-OFF COCK
	SHUT OFF VALVE
	IN-LINE PUMP
	FLOOR DRAIN OR EQMT FLOOR DRAIN
	PIPE DROP/PIPE RISE
	BOTTOM OUTLET TEE
	WCO
	FFCO
	SANITARY VENT THROUGH ROOF
	EQUIPMENT TYPE AND DESIGNATION
	PLUMBING FIXTURE DESIGNATION
	EXISTING TO REMAIN
	CONNECT TO EXISTING



WASTE AND VENT RISER DIAGRAM

NO SCALE



Dev Anand
President & CEO

Kevin Campbell
Senior Architect

8807 Monrovia Street
Lenexa, Kansas 66215

Phone: 913.322.8882
Fax: 913.322.8886
Email: kevin@dev-inc.com

THIS DRAWING has been prepared by the Architect, or prepared under his direct supervision or as an instrument of service and is intended for use only on this project. All Drawings, Specifications, Ideas and designs, including the overall layout, form, arrangement, and composition of space and elements portrayed, constitute the original, unpublished work of the Architect. Any reproduction, use, or disclosure of the information contained herein without the written consent of the Architect is strictly prohibited.

COMPLY WITH all laws, codes, ordinances and regulations with authority having jurisdiction and with requirements of the Landlord, if applicable. Do not start work until all permits and required approvals are obtained.



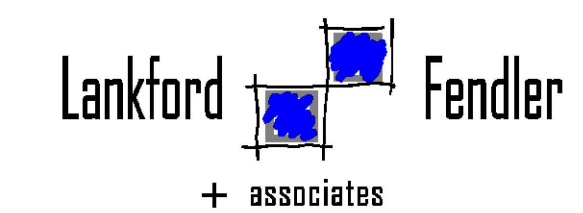
A TENANT FINISH FOR:
LAKWOOD ORTHODONTICS
1399 NE DOUGLAS ST
LEE'S SUMMIT, MO 64086



PROJECT NO. 210407

DRAWING ISSUANCE

DATE	REVISION
08/13/2021	PERMIT
09/03/2021	REV 01
10/06/2021	REV 02
01/19/2022	REV 03
03/25/2022	REV 04
	REV 05



1730 Walnut Street Kansas City, Missouri 64108
1915 Frederick Avenue, St. Joseph, Missouri 64501
Phone: 816.221.1411 | Fax: 816.221.1429
LANKFORD | FENDLER + ASSOCIATES, CONSULTING ENGINEERS, INC.
COPYRIGHT © 2021 Project No. 21-0535-00
CGA No. 2006001168

SHEET NUMBER

P2.1

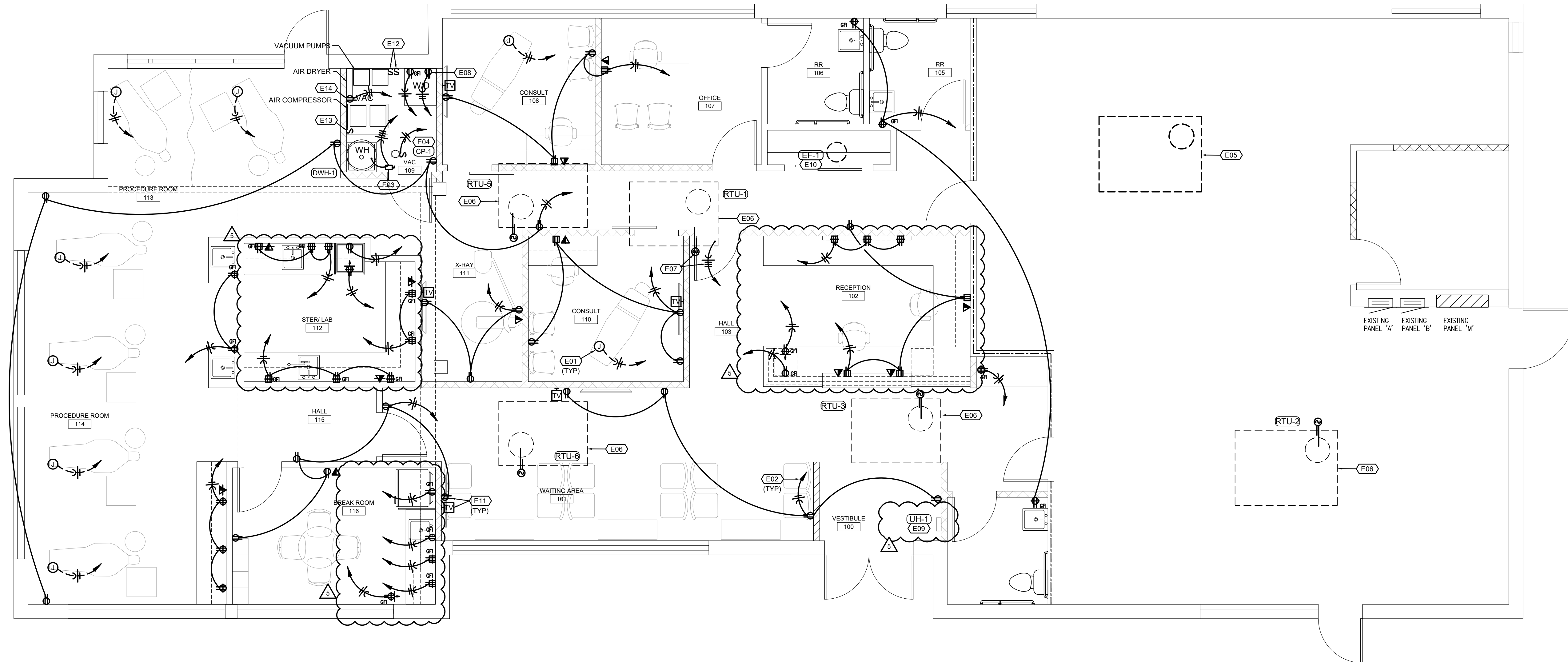
PLUMBING SCHEDULES,
NOTES, AND SYMBOLS

THIS DRAWING has been prepared by the Architect, or prepared under his direct supervision as an instrument of service and is intended for use only on this project. All Drawings, Specifications, Ideas and designs, including the overall layout, form, arrangement, and composition of space and elements portrayed, constitute the original, unpublished work of the Architect. Any reproduction, use, or disclosure of the information contained herein without the written consent of the Architect is strictly prohibited.

COMPLY WITH all laws, codes, ordinances and regulations with authorities having jurisdiction and with requirements of the Landlord, if applicable. Do not start work until all permits and required approvals are obtained.



08/13/2021	PERMIT
09/03/2021	REV 01
10/06/2021	REV 03
01/19/2022	REV 04
03/25/2022	REV 05



FLOOR PLAN-POWER N
SCALE: 1/4"=1'-0"

GENERAL NOTES POWER

- A. ALL PATIENT CARE AREAS UTILIZING MC CABLE SHALL USE HCFMC TYPE MC CABLE AND SHALL MEET GROUNDING REQUIREMENTS OF NEC ARTICLE 517.13. WHERE MC CABLE IS USED, THE METAL SHEATHING SHALL BE LISTED AS AN ACCEPTABLE GROUNDING PATH.
- B. RECEPTACLES INSTALLED WITHIN ANY PATIENT CARE AREAS SHALL BE TAMPER RESISTANT, HOSPITAL GRADE 120 VOLT, 20 AMP DUPLEX TYPE.

FLOOR PLAN NOTES

1. MAKE 120 VOLT, 20 AMP POWER CONNECTION TO DENTAL CHAIR. PROVIDE FLOOR BOX WITH DUPLEX RECEPTACLE AND DATA OUTLET AS REQUIRED. COORDINATE EXACT LOCATION WITH DENTAL CHAIR INSTALLER.
2. HOMERUN TO EXISTING 120/208 VOLT PANEL 'A' AND TERMINATE ON A 20A/1P BREAKER.
3. PROVIDE A 30A/3P, NON-FUSED DISCONNECT IN A NEMA 1 ENCLOSURE AND MAKE CONNECTION TO WATER HEATER. HOMERUN TO EXISTING PANEL 'A' AND TERMINATE ON A NEW 20A/3P BREAKER.
4. PROVIDE A 20A/1P TOGGLE SWITCH FOR DISCONNECTING MEANS AND MAKE CONNECTION TO PUMP. HOMERUN TO EXISTING PANEL 'A' AND TERMINATE ON A 20A/1P BREAKER.
5. EXISTING ROOFTOP UNIT TO BE REMOVED. REMOVE ALL ASSOCIATED WIRING AND CONDUIT BACK TO SOURCE.
6. EXISTING ROOFTOP UNIT TO REMAIN. PROVIDE NEW DUCT DETECTOR IN RETURN AIR DUCT. INTERLOCK WITH FAN FOR SHUTDOWN OF UNIT UPON DETECTION OF SMOKE. PROVIDE KEYPED RESET AN ALARM IN CEILING BELOW UNIT.
7. MAKE POWER CONNECTION TO NEW ROOFTOP UNIT. HOMERUN TO EXISTING PANEL 'A' AND TERMINATE ON A 20A/3P BREAKER. PROVIDE NEW DUCT DETECTOR IN RETURN AIR DUCT. INTERLOCK WITH FAN FOR SHUTDOWN OF UNIT UPON DETECTION OF SMOKE. PROVIDE KEYPED RESET AN ALARM IN CEILING BELOW UNIT.
8. PROVIDE 30A, 250 VOLT RECEPTACLE FOR DRYER. COORDINATE EXACT RECEPTACLE TYPE WITH DRYER PLUG. HOMERUN TO PANEL 'A' AND TERMINATE ON A NEW 30A/2P BREAKER.
9. MAKE POWER CONNECTION TO NEW UNIT HEATER. HOMERUN TO EXISTING PANEL 'A' AND TERMINATE ON A 20A/2P BREAKER.
10. MAKE POWER CONNECTION TO NEW ROOF MOUNTED EXHAUST FAN. HOMERUN TO EXISTING PANEL 'A' AND TERMINATE ON A 20A/1P BREAKER.
11. COORDINATE ROUGH-IN FOR TELEVISION WITH TELEVISION MOUNTING BRACKET.
12. PROVIDE 20A/2P MOTOR RATED TOGGLE SWITCH FOR DISCONNECTING MEANS TO VACUUM PUMPS. HOMERUN A DEDICATED 20A/240V CIRCUIT FROM EACH PUMP TO PANEL 'A' AND TERMINATE ON A 20A/2P BREAKER.
13. PROVIDE 20A/2P MOTOR RATED TOGGLE SWITCH FOR DISCONNECTING MEANS TO AIR COMPRESSOR. HOMERUN A DEDICATED 20A/240V CIRCUIT FROM AIR COMPRESSOR TO PANEL 'A' AND TERMINATE ON A 20A/2P BREAKER.
14. COORDINATE MOUNTING HEIGHT OF RECEPTACLE FOR AIR DRYER WITH LOCATION OF AIR DRYER CONTROL PANEL.

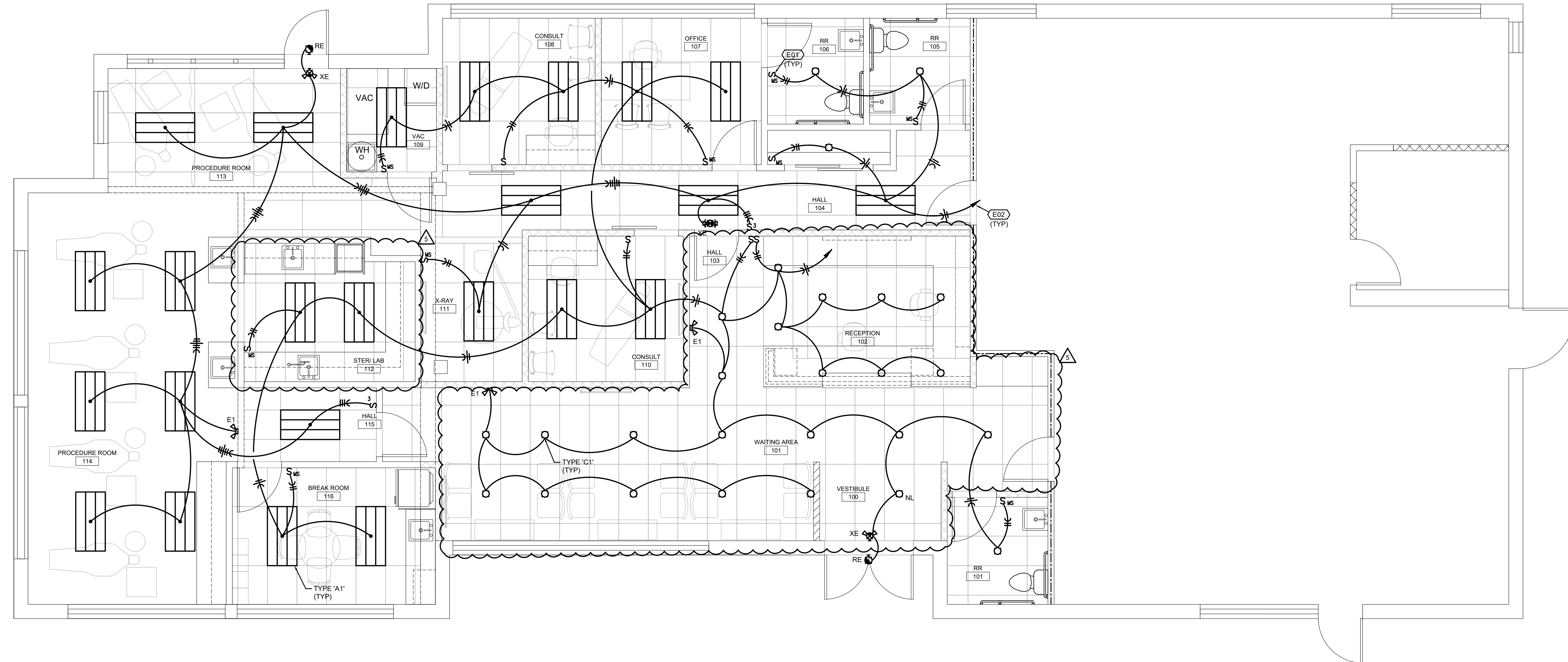


PROJECT NO. 210407
DRAWING ISSUANCE

08/13/2021	PERMIT
09/03/2021	REV 01
10/06/2021	REV 03
01/19/2022	REV 04
03/25/2022	REV 05

SHEET NUMBER

E2.0
FLOOR PLAN-
LIGHTING



FLOOR PLAN-LIGHTING N
SCALE: 1/4"=1'-0"

FLOOR PLAN NOTES

- DUAL TECHNOLOGY WALL SWITCH OCCUPANCY SENSOR BY WATTSTOPPER OR HUBBELL.
- HOMERUN TO EXISTING 120/208 VOLT PANEL 'A' AND TERMINATE ON A 20A/1P BREAKER.