

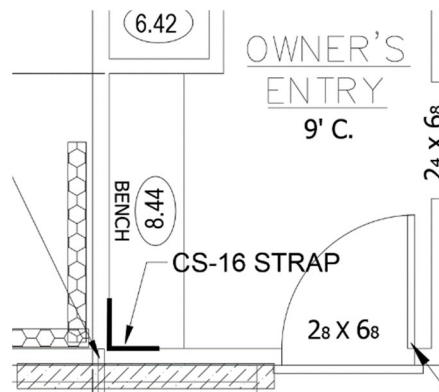
March 21, 2022

Summit Homes
 120 SE 30th St.
 Lee's Summit, MO 64082

RE: Field Issue of top plate connections, header spans/bracing, and non-continuous floor joists for Lot #92 Manor at Stoney Creek– 4416 SW Alabaster Circle, Lee's Summit, MO 64082 – Permit # PRRES20211947

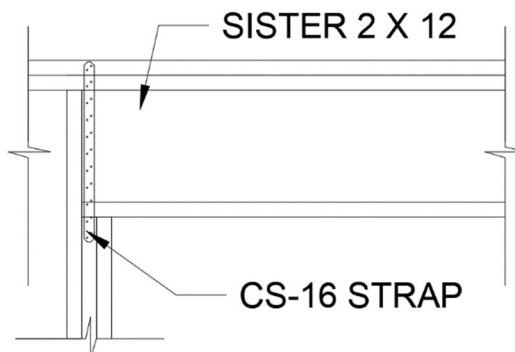
Top plate connection at Owners Entry/ Garage Wall.

- Install (2) 24" length of Simpson CS-16 with .0131" x 2-1/2" nails per manufacturer's specs and at corner of Owners Entry wall and rear Garage wall as shown in image below.
- Install strap on upper and lower top plate.



Corner to Corner Headers/ Bracing at Patio Slider and Rec Room windows.

- Sister a continuous #2-2 x 12 header to existing (2) 1-3/4" x 11-1/4" LVL. Fasten with 2 rows of 16d nails @ 24" OC with the top row of nails 1.5" from the top of the beam and the bottom from 1.5" from the bottom of the beam.
- Apply CS-16 Strap from the jack stud to the top plate as show in the image below. Fasten with .0131" x 2-1/2" nails per manufacturer's spaces.

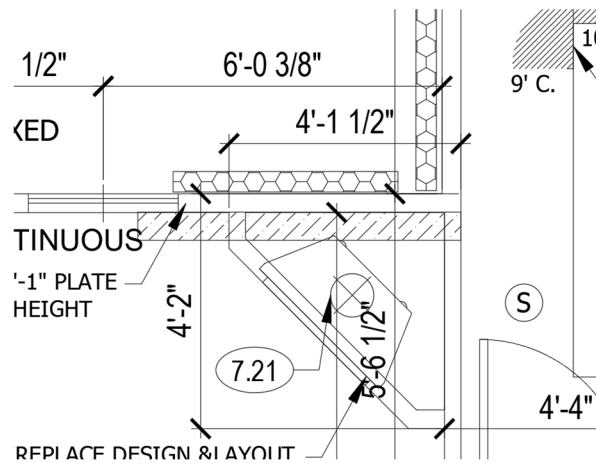


Non-Continuous Floor Joist supporting Bath #4.

- Floor joists are Douglas Fir Larch #2 2x10 @ 16" oc and span approximately 9'-10" and have standard dead=15 psf and live = 40 psf
- Floor joist has been cut to allow DWV lines.
- Install a 6' length 2x10 with 4 fasteners per linear ft in "W" pattern with 2-1/2" structural screws or 16D nails to existing non-continuous joist.

Bracing behind Fireplace.

- Install LIB bracing behind Fireplace on interior side of wall in lieu of GB bracing.
- LIB shall be 5'9" and extend over window header if necessary as seen in image below.



Sincerely,

Bradley Huxol, PE

