

CONTRACTORS NOTES:

HVAC CONTRACTOR

- HVAC CONTRACTOR SHALL FURNISH AND INSTALL ROOF-TOP UNITS (IF REQUIRED), EXHAUST FAN, DUCTWORK, INSULATION WRAP, DIFFUSERS, SMOKE DETECTORS, OCCUPIED/UNOCCUPIED PANEL, AND TEMPERATURE CONTROLS.
- THE HVAC CONTRACTOR SHALL VERIFY LOCATIONS FOR ALL HVAC EQUIPMENT ON SITE FROM MOST-RECENT KITCHEN EQUIPMENT PLANS. ALL FANS ARE TO BE UL LISTED.
- ALL HVAC EQUIPMENT CURBS/ADAPTERS (AS REQUIRED) SHALL BE SUPPLIED BY HVAC CONTRACTOR.
- SHIMS SHALL BE PROVIDED BY HVAC CONTRACTOR BETWEEN THE ROOF DECK AND THE CURB TO COMPENSATE FOR ROOF PITCH.
- ALL FLEX DUCT SHALL BE U.L. LISTED, R-6, FOIL-BACKED, CLASSIFIED AS A CLASS 1 AIR DUCT. MAXIMUM LENGTH IS TO BE 12' – 0" PER DROP OR PER LOCAL CODE.
- ALL METAL DUCT AND AIR DISTRIBUTION DEVICES SHALL BE INSULATED WITH R-6, 2" X .75 DENSITY FOIL-BACKED INSULATION, WITH FIRE AND SMOKE RATING [25]–[50].
- ALL DUCTWORK TO BE INDEPENDENTLY HUNG FROM STRUCTURAL MEMBERS.
- ALL DUCTWORK SHALL BE FABRICATED, INSTALLED, SEALED, AND EXTERNALLY INSULATED PER SMACNA LOW-VELOCITY DUCT MANUAL (LATEST ISSUE). INTERNALLY INSULATED DUCT IS NOT PERMITTED.
- UNLESS OTHERWISE NOTED, ALL SUPPLY TAKEOFFS SHALL HAVE A MANUAL VOLUME CONTROL DAMPER.
- THE HVAC CONTRACTOR SHALL COORDINATE DIFFUSER LOCATIONS ON SITE WITH THE MOST RECENT REFLECTED CEILING PLAN.
- THE HVAC CONTRACTOR SHALL FURNISH A WRITTEN GUARANTEE COVERING A ONE-YEAR PERIOD FOR ALL EQUIPMENT AND AN ADDITIONAL FOUR-YEAR PERIOD FOR THE COMPRESSORS IN THE RTUS. ALL FANS TO BE U.L. LISTED.
- UPON COMPLETION OF PROJECT THE HVAC CONTRACTOR IS TO HIRE AN AABC OR NEBB CERTIFIED, INDEPENDENT TEST & BALANCE COMPANY TO CONDUCT A COMPLETE, CERTIFIED TEST AND BALANCE OF ALL HVAC EQUIPMENT. PROVIDE A WRITTEN REPORT TO NCA CONSULTANTS. ALL CAPACITIES MUST BE SET TO AMOUNT INDICATED ON THE FLOOR PLANS AND SCHEDULES.
- THE HVAC CONTRACTOR IS TO MAKE ALL LOW-VOLTAGE WIRING FINAL CONNECTIONS FOR ALL HVAC EQUIPMENT INCLUDING TEMPERATURE CONTROLS, RTUS, AND SMOKE DETECTORS.

GENERAL CONTRACTOR

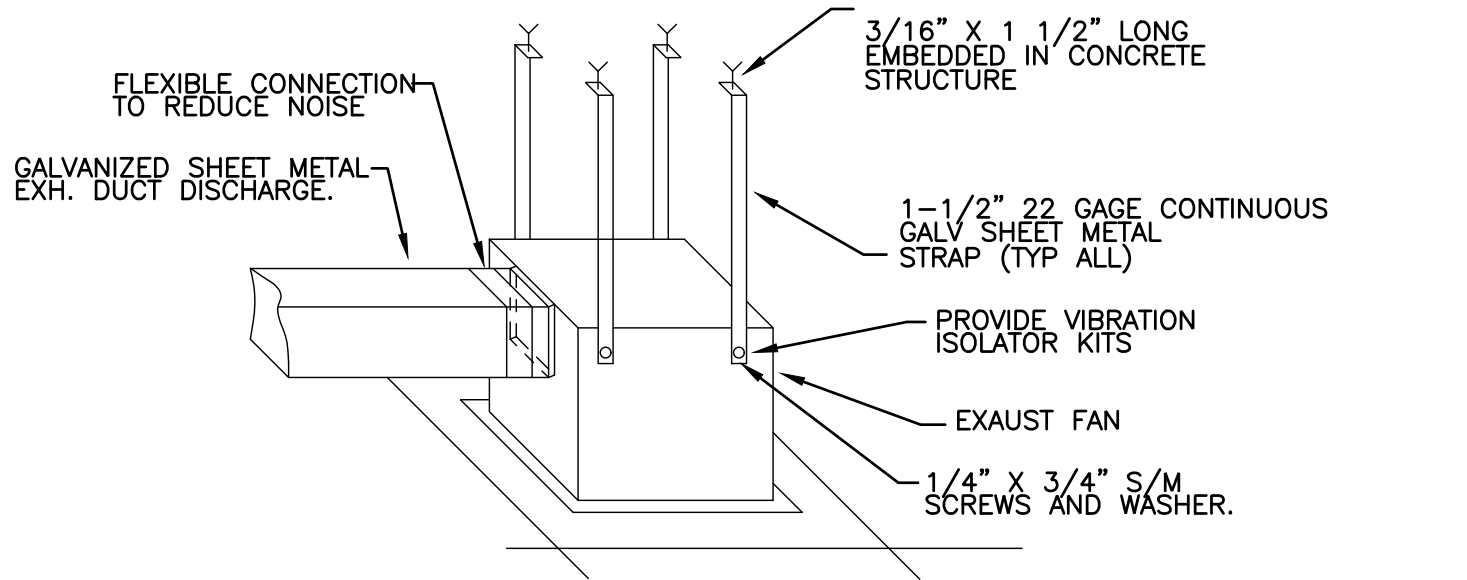
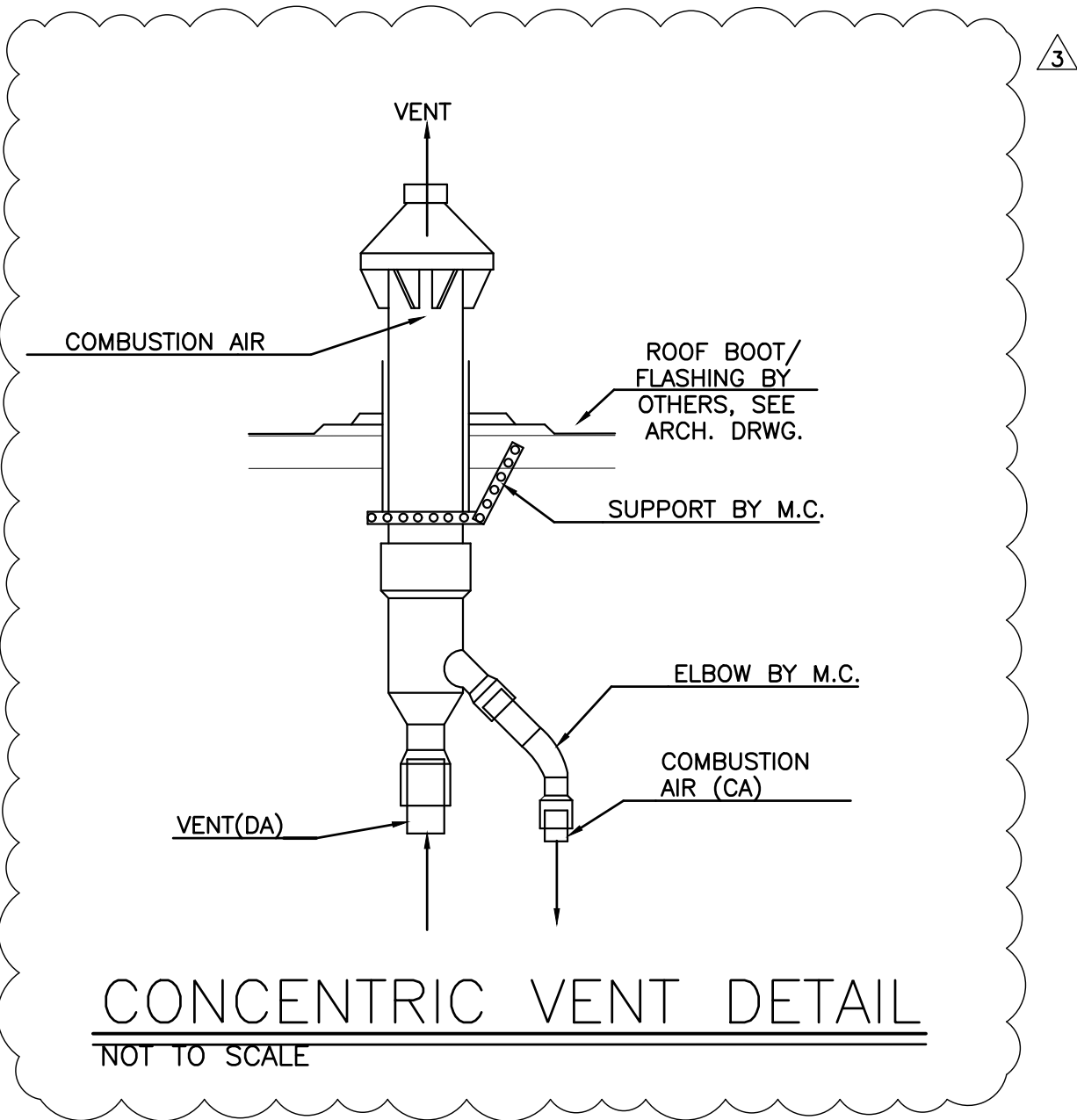
- IT IS THE RESPONSIBILITY OF THE GENERAL CONTRACTOR TO RECEIVE, OFFLOAD, AND STORE ALL HVAC MATERIALS WHICH ARRIVE AT THE JOB SITE. ALL MATERIAL MUST BE STORED INSIDE THE BUILDING.
- RTU ROOF OPENING SIZES AND ROOF CURBS ARE BASED ON EQUIPMENT SHOWN. IF OTHER EQUIPMENT IS USED, VERIFY ROOF OPENING REQUIREMENTS. MAKE PENETRATIONS AS NEEDED FOR INSTALLATION OF NEW CURB AND EQUIPMENT. COORDINATE ON SITE WITH HVAC CONTRACTOR. ENSURE THAT ROOFING MATERIAL DOES NOT COVER THE TOP OF ANY HVAC EQUIPMENT CURB.
- ALL ROOF, CEILING, WALL, AND STRUCTURAL FRAMING FOR UNIT, FAN, DUCT, DIFFUSER, AND ALL OTHER HVAC WORK SHALL BE BY THE G.C. COORDINATE ON SITE WITH HVAC CONTRACTOR. GENERAL CONTRACTOR IS TO PROVIDE ANY SCREENING, GUARD RAILS, ETC. FOR ROOF-MOUNTED HVAC EQUIPMENT PER LOCAL ADOPTED CODES. ANY REQUIRED PAINTING OF HVAC WORK IS TO BE BY THE GENERAL CONTRACTOR.
- IF NECESSARY, THE GENERAL CONTRACTOR IS TO REMOVE, REPLACE, AND/OR REPAIR CEILING GRID AND TILES IN ORDER FOR THE HVAC WORK TO BE PERFORMED..

ELECTRICAL CONTRACTOR

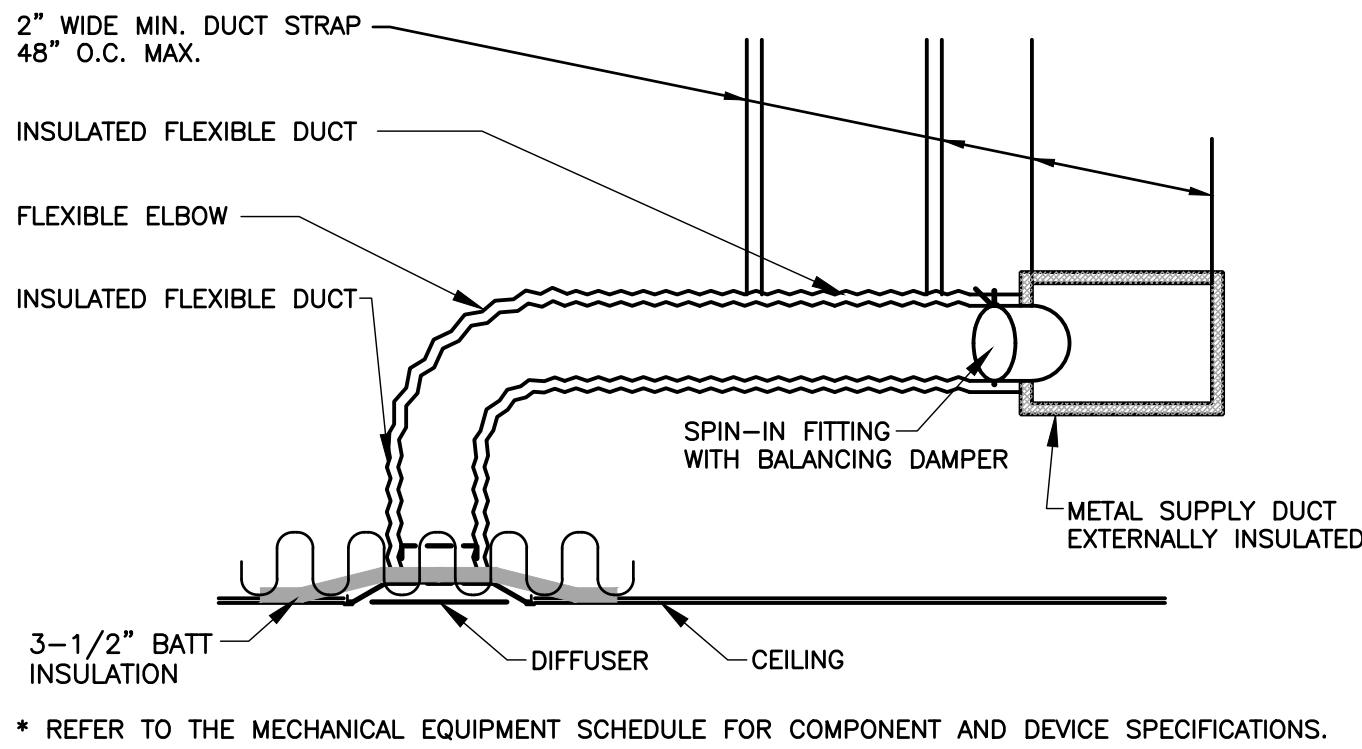
- THE ELECTRICAL CONTRACTOR SHALL FURNISH AND INSTALL PITCH POCKETS FOR POWER AND CONTROL WIRING, AND IS TO MAINTAIN 12" MINIMUM CLEARANCE FROM BACK PANEL OF AIR CONDITIONING UNITS. DO NOT PENETRATE BOTTOM OF RTU CURB.
- THE ELECTRICAL CONTRACTOR SHALL INSTALL LOW-VOLTAGE CONTROL WIRING FOR ALL AIR CONDITIONING CONTROLS.
- THE ELECTRICAL CONTRACTOR SHALL FURNISH AND INSTALL DISCONNECTS FOR RTUS AND INTERLOCK RESTROOM FAN TO RUN CONTINUOUSLY WHILE WORK AREA LIGHTS ARE ON.
- FOR EACH AIR CONDITIONING UNIT, THE ELECTRICAL CONTRACTOR IS TO PROVIDE ONE SINGLE-GANG RECEPTACLE TEST STATION FOR THE REMOTE SENSOR AND/OR T-STAT, AND ONE DOUBLE-GANG RECEPTACLE TEST STATION FOR THE ANNUNCIATOR, WITH GREEN AND RED LIGHT INDICATORS. THE FIRE AND MECHANICAL INSPECTORS WILL DETERMINE SUITABLE LOCATION FOR TEST STATIONS. ANNUNCIATORS AND TEST STATION WILL BE LOOPED IN THE CIRCUITRY OF THE SMOKE DETECTION DEVICES. WIRING WILL BE INSTALLED BY ELECTRICAL CONTRACTOR.

PLUMBING CONTRACTOR

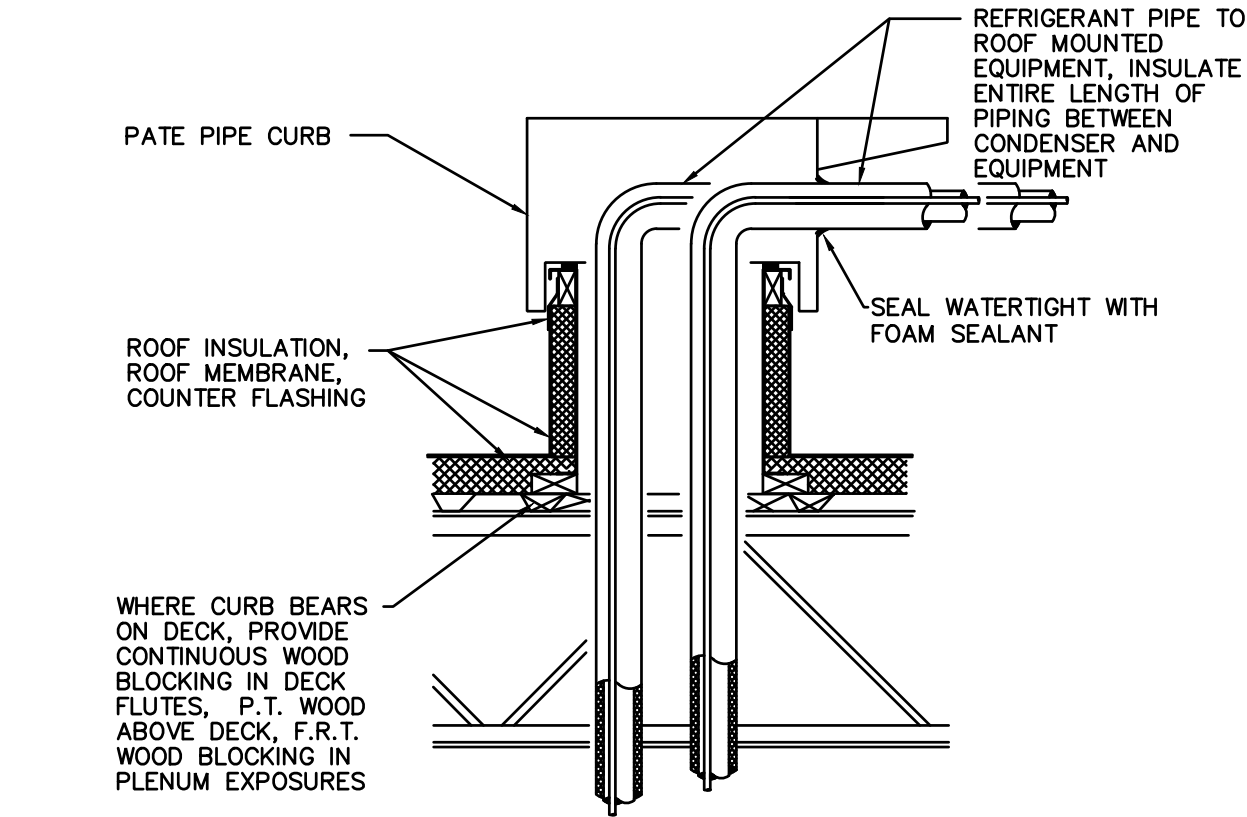
- THE PLUMBING CONTRACTOR TO PROVIDE AND INSTALL CONDENSATE DRAINS/GAS PIPING FOR ALL A/C UNITS, AND PITCH POCKETS FOR RTU CONNECTIONS. DO NOT PENETRATE BOTTOM OF RTU CURB.
- THE PLUMBING CONTRACTOR IS TO COORDINATE PLUMBING VENT STACKS AND WATER HEATER FLUES WITH OUTSIDE AIR INTAKES OF A/C UNITS. 10'-0" MINIMUM CLEARANCE REQUIRED OR PER LOCAL CODE.
- THE PLUMBING CONTRACTOR SHALL PROVIDE AND INSTALL FLUE GAS EXHAUST VENT FOR WATER HEATER. MAINTAIN 10'-0" MINIMUM CLEARANCE TO AIR INTAKES, OR PER LOCAL CODE. COORDINATE ON SITE WITH G.C. AND HVAC CONTRACTOR.



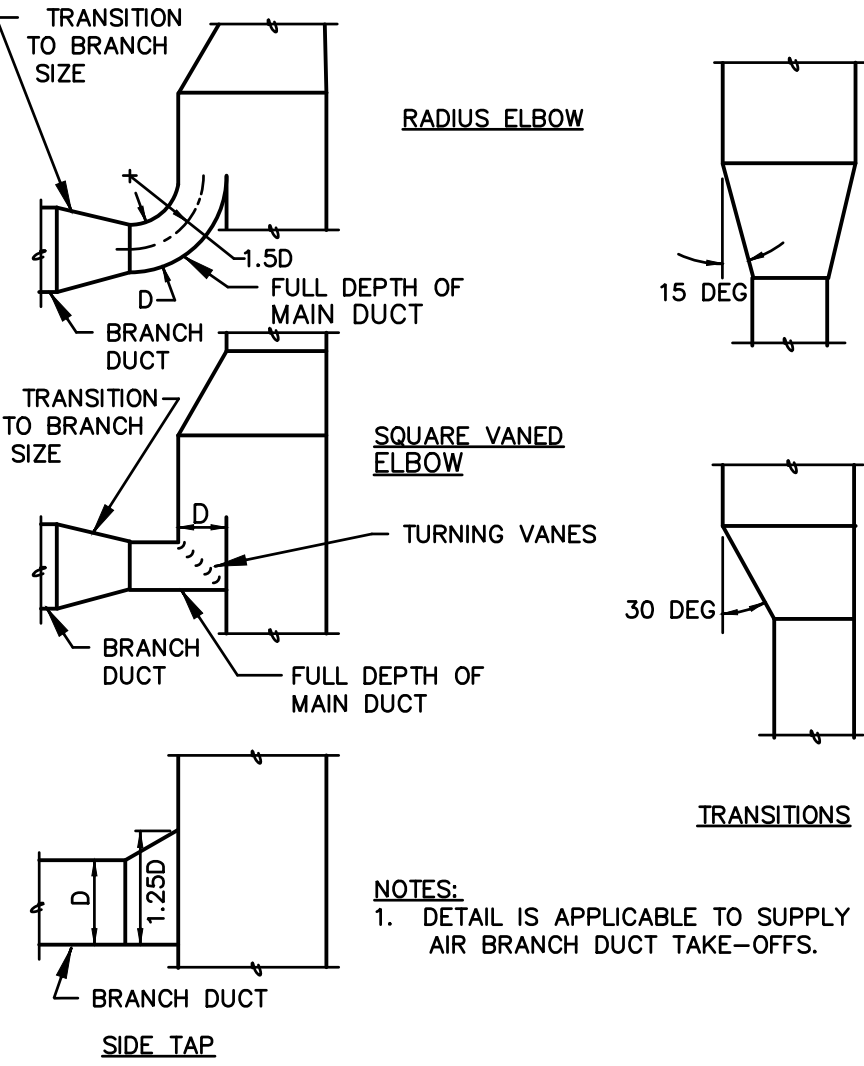
BATHROOM FAN INSTALLATION DETAIL
NOT TO SCALE



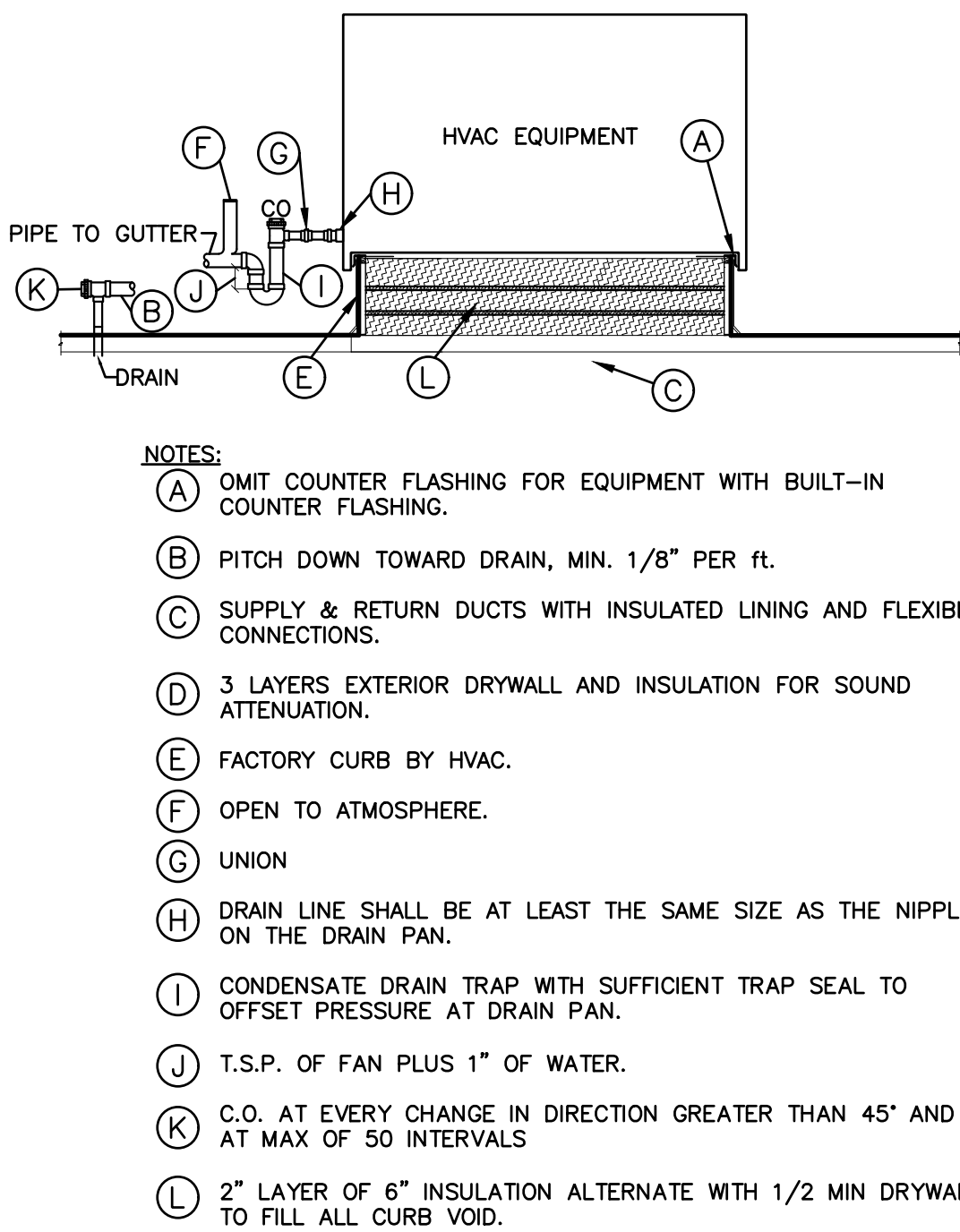
HVAC DUCTWORK DETAIL
NOT TO SCALE



REFRIGERANT PIPING DETAIL
NOT TO SCALE



BRANCH DUCT TAKEOFFS
NOT TO SCALE



NOTES:

- OMIT COUNTER FLASHING FOR EQUIPMENT WITH BUILT-IN COUNTER FLASHING.
- PITCH DOWN TOWARD DRAIN, MIN. 1/8" PER FT.
- SUPPLY & RETURN DUCTS WITH INSULATED LINING AND FLEXIBLE CONNECTIONS.
- 3 LAYERS EXTERIOR DRYWALL AND INSULATION FOR SOUND ATTENUATION.
- FACTORY CURB BY HVAC.
- OPEN TO ATMOSPHERE.
- UNION
- DRAIN LINE SHALL BE AT LEAST THE SAME SIZE AS THE NIPPLE ON THE DRAIN PAN.
- CONDENSATE DRAIN TRAP WITH SUFFICIENT TRAP SEAL TO OFFSET PRESSURE AT DRAIN PAN.
- T.S.P. OF FAN PLUS 1" OF WATER.
- C.O. AT EVERY CHANGE IN DIRECTION GREATER THAN 45° AND AT MAX OF 50 INTERVALS
- 2" LAYER OF 6" INSULATION ALTERNATE WITH 1/2 MIN DRYWALL TO FILL ALL CURB VOID.

RTU CURB AND PIPING DETAIL
NOT TO SCALE



ARCHITECT
CORALIC, LLC
EDIN CORALIC
9700 MACKENZIE ROAD, STE 222
ST. LOUIS, MO 63123
p: 314.578.4953
edin@coralicarchitecture.com
STRUCTURAL ENGINEER
JAMES C. KREHER
JIM KREHER
208 N. MAIN STREET,
COLUMBIA, IL 62236
p: 618.281.8505
jimk@kreherengineering.com
MEP ENGINEER
Case Engineering
DARRELL R. CASE
796 MERUS CT.,
FENTON, MO 63026
T: 636.349.1600 F: 636.349.1730
dcase@caseengineeringinc.com

Project No: M00102
Dutch Bros Coffee - New Freestanding Store
500 NW Chipman Road, Lee's Summit, Missouri 64086
for: Dutch Bros Coffee
110 SW 4th St.
Grants Pass, OR 97526

ISSUED FOR PERMIT:
10.11.2021

REV.	DATE:	DESCRIPTION:
01	10.14.21	CITY COMMENTS
02	11.01.21	CITY COMMENTS
03	03.15.22	OWNER REVISIONS

SHEET NAME:

MECHANICAL DETAILS

SHEET NUMBER:

M2.0