

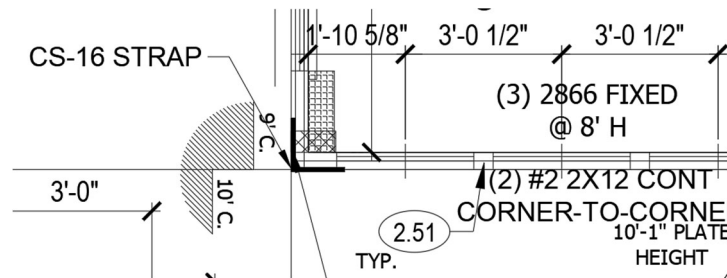
March 18, 2022

Summit Homes
120 SE 30th St.
Lee's Summit, MO 64082

**RE: Field Issue of non-continuous top plate connections for Lot # 26 Woodside Ridge – 433 NW Kaylea Court
Lee's Summit, MO 64082 – Permit # PRRES20213630**

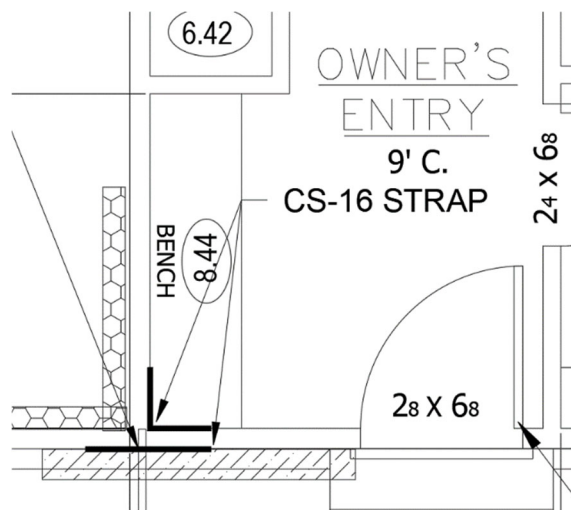
Top plate connection for 2x4 wall at Dining/ Great Room wall.:

- Install (2) 24" length of Simpson CS-16 with (20) .0131" x 2-1/2" nails per manufacturer's specs at the corner of Dining/ Great room wall as shown in image below.
- Install strap on upper and lower top plate. Attach top strap to top plate and 2x12 header.



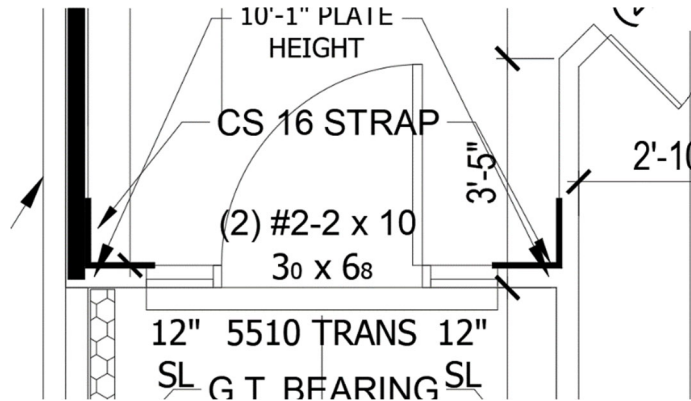
Top plate connection for 2x4 wall at Owners Entry/ Garage wall:

- Install (4) 24" length of Simpson CS-16 with (20) .0131" x 2-1/2" nails per manufacturer's specs at corner of 2x4 wall at the Owners Entry and Garage wall as shown in image below.
- Install strap on upper and lower top plate.



Top plate connection for 2x4 wall at Foyer/ front door:

- Install (4) 24" length of Simpson CS-16 with (20) .0131" x 2-1/2" nails per manufacturer's specs at the 2x4 cripple to the front door framing.
- Attach one CS-16 strap at the bottom plate of the cripple wall to the bottom plate of the 2x10 header and the other strap from the cripple wall top plate to the 2x10 header top plate as shown in image below.



Sincerely,

Bradley Huxol, PE

