



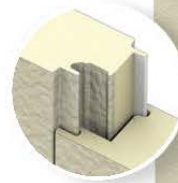
# CF SANTA FE

## INSULATED METAL WALL PANEL

*The Metl-Span CF Santa Fe panel has a flat exterior profile with a heavy, embossed stucco texture that mimics the look of a masonry stucco finish but with the added value of an insulated metal panel. The profile is flush with the warmth of an old-world finish, providing a visually pleasing building.*

*Note: Not intended for exterior walls on cold storage buildings.*

### LOCK & GROOVE SYSTEM



### PANEL



### PANEL PROFILE



## PRODUCT SPECIFICATIONS

**WIDTH** • 24", 30", 36", 42"

**THICKNESS** • 2", 2½", 2¾", 3", 4"

**LENGTH** • 8'-0" to 32'-0" Horizontal  
8'-0" to 40'-0" Vertical

**EXTERIOR PROFILE** • Flat profile with heavy embossing resembling old-world hand plaster

**EXTERIOR FACE** • G-90 galvanized or AZ-50 aluminum-zinc coated steel in 24 and 22 Ga.

**INTERIOR PROFILE** • Light Mesa, nominal ⅛" deep, embossed or unembossed

**INTERIOR FACE** • G-90 galvanized or AZ-50 aluminum-zinc coated in 26, 24 and 22 Ga.

**JOINT** • Offset double tongue-and-groove with extended metal shelf for positive face fastening

**REVEAL** • Up to 1" reveal options in ¼", ½", ¾" and 1" increments

### U-FACTORS AND R-VALUES\*\*

#### U-FACTOR (BTU/h·ft²·°F)\*\*

##### PANEL WIDTH: 42"

	75°
2'	0.0669
2½'	0.0500
2¾'	0.0450
3'	0.0400
4'	0.0307

#### R-VALUE (h·ft²·°F/BTU)\*\*

##### PANEL WIDTH: 42"

	75°
2'	14.95
2½'	20.00
2¾'	22.50
3'	25.00
4'	32.57

\*Available only from Nevada plant and Mattoon Plant

\*\* Based on ASTM C518, ASTM C1363 and thermal modeling, 75° F core mean temp.

## DESIGN FEATURES & BENEFITS

- Masonry stucco appearance
- Utilizes concealed clips and eliminates thermal short circuits
- Easy and fast installation, with reduced construction labor costs
- Interior and exterior applications
- Can be used in conjunction with other Metl-Span joint profiles

Metl-Span: All-In-One Performance  
1720 Lakepointe Drive, Suite 101, Lewisville, Texas 75057 (p) 877.585.9969 (f) 972.420.9382 metlspan.com

©2019 Metl-Span®, part of the Cornerstone Building Brands family. All rights reserved. Printed in the U.S.A.

PART# SFD50819

WordPress Header HPCI Data Sheet Bookmark the [permalink](#).

### Leave a Reply

Your email address will not be published. Required fields are marked \*