



PELLA

BUILDING SYSTEMS

906 West 9th Street Pella, IA 50219
(800) 225-0481 www.pellabuildings.com

BUILDING LOADS / DESCRIPTION:

WIDTH: 50 LENGTH: 100 HEIGHT: 14.79 / 16.88
(BUILDING DIMENSIONS ARE NOMINAL. REFER TO PLANS).

SITE CLASS: _____

THIS STRUCTURE IS DESIGNED UTILIZING THE LOADS INDICATED AND APPLIED AS REQUIRED BY: IBC 18

OCCUPANCY CATEGORY: _____

SEISMIC DESIGN CATEGORY: _____

THE CONTRACTOR IS TO CONFIRM THAT THESE LOADS COMPLY WITH THE REQUIREMENTS OF THE LOCAL BUILDING DEPARTMENT.

<u>ROOF DEAD LOAD:</u>	<u>2.000</u> PSF (ROOF PANELS & PURLINS)		
<u>COLLATERAL LOAD:</u>	<u>0.5</u> PSF	<u>SNOW EXPOSURE:</u>	_____
<u>ROOF LIVE LOAD:</u>	<u>20.00</u> PSF	<u>WIND EXPOSURE:</u>	<u>C</u>
<u>ROOF SNOW LOAD:</u>	<u>14</u> PSF	<u>INTERNAL PRESSURE COEFF.:</u>	_____
<u>GROUND SNOW LOAD:</u>	_____ PSF		_____ / _____
<u>BASIC WIND SPEED:</u>	<u>110</u> MPH	<u>SPECTRAL RESPONSE COEFF.</u>	_____
<u>SEISMIC ZONE:</u>	<u>B</u>	Sds	_____
<u>THERMAL FACTOR:</u>	_____	Sd1	_____
<u>IMPORTANCE FACTORS:</u>		<u>DESIGN BASE SHEAR, V:</u>	_____
WIND LOAD	_____ 1.00	EXPANDED FORMULA	
SNOW LOAD	_____	LONGITUDINAL	0.91
SEISMIC LOAD	_____ 1.00	TRANSVERSE	0.91

GENERAL NOTES:

- 1) MATERIALS : MINIMUM YIELD:
- | | | |
|------------------------|-------------|----------|
| HOT ROLLED BAR | Fy = | ksi MIN. |
| STRUCTURAL STEEL SHEET | Fy = | ksi MIN. |
| STRUCTURAL STEEL PLATE | Fy = | ksi MIN. |
| COLD FORMED SHAPES | Fy = | ksi MIN. |
| WALL SHEETING | Fy = | ksi MIN. |
| ROOF SHEETING | Fy = | ksi MIN. |
| BOLTS | A307 & A325 | |
- THE METAL BUILDING MANUFACTURER RESERVES THE RIGHT TO SUBSTITUTE THE ABOVE MATERIALS WITH EQUAL OR BETTER MATERIAL.

2) BOLT TIGHTENING REQUIREMENTS:

ALL HIGH STRENGTH BOLTS ARE A325 UNLESS NOTED OTHERWISE. HIGH STRENGTH BOLTS SHALL BE TIGHTENED BY THE TURN OF THE NUT METHOD IN ACCORDANCE WITH THE LATEST EDITION AISC "SPECIFICATION FOR STRUCTURAL JOINTS USING ASTM A325 OR A490 BOLTS". A325 BOLTS SHALL BE INSTALLED WITH OUT WASHERS WHEN TIGHTENED BY THE "TURN OF THE NUT" METHOD. ALL BOLTED CONNECTIONS, FOR SHEAR/BEARING CONNECTION TYPE WITH BOLT THREADS EXCLUDED FROM THE SHEAR PLANE SHALL BE SNUG TIGHT ONLY.

3) ALL STRUCTURAL STEEL TO RECEIVE A RUST INHIBITIVE PRIMER. THIS PAINT IS NOT INTENDED FOR LONG TERM EXPOSURE TO THE ELEMENTS.

ROOF PANELS:

COLOR: _____ Galvalume+ w/ Drip Stop

WALL PANELS:

COLOR: _____ NEED SIG 200

TRIM COLORS:

CABLE: _____ NEED SIG 200

CORNER: _____ NEED SIG 200

EAVE: _____ NEED SIG 200

FRAMED OPENINGS: _____ NEED SIG 200

LINER PANELS:

COLOR: _____ N/A

LINER TRIM:

COLOR: _____ N/A

DEFLECTION LIMTS:

EW COL:	180
EW RAF LIVE:	180
EW RAF WIND:	180
WALL GIRT:	90
PURL LIVE:	180
PURL WIND:	150
WALL PANEL:	60
ROOF PANEL LIVE:	60
ROOF PANEL WIND:	60
RF HORIZONTAL:	180
RF VERTICAL:	60
WIND BENT:	60
RF CRANE:	0
RF SEIS:	0
WIND BENT SEIS:	0

BUILDER / CONTRACTOR RESPONSIBILITIES

IT IS THE RESPONSIBILITY OF THE BUILDER/CONTRACTOR TO INSURE THAT ALL PROJECT PLANS AND SPECIFICATIONS COMPLY WITH THE APPLICABLE REQUIREMENTS OF ANY GOVERNING BUILDING AUTHORITIES. THE SUPPLYING OF SEALED ENGINEERING DATA AND DRAWINGS FOR THE METAL BUILDING SYSTEM DOES NOT IMPLY OR CONSTITUTE AN AGREEMENT THAT THE METAL BUILDING SYSTEM MANUFACTURER OR ITS DESIGN ENGINEER IS ACTING AS THE ENGINEER OF RECORD OR DESIGN PROFESSIONAL FOR A CONSTRUCTION PROJECT.

THE CONTRACTOR MUST SECURE ALL REQUIRED APPROVALS AND PERMITS FROM THE APPROPRIATE AGENCY AS REQUIRED. APPROVAL OF THE METAL BUILDING SYSTEM MANUFACTURER'S DRAWINGS AND CALCULATIONS INDICATE THAT THE METAL BUILDING SYSTEM MANUFACTURER CORRECTLY INTERPRETED AND APPLIED THE REQUIREMENTS OF THE CONTRACT DRAWINGS AND SPECIFICATIONS. (SECT. 4.2.1 AISC CODE OF STANDARD PRACTICES, 9TH ED.) WHERE DISCREPANCIES EXIST BETWEEN THE METAL BUILDING SYSTEM MANUFACTURER'S STRUCTURAL STEEL PLANS AND THE PLANS FOR OTHER TRADES, THE STRUCTURAL STEEL PLANS SHALL GOVERN. (SECT. 3.3 AISC CODE OF STANDARD PRACTICE 9TH ED.)

DESIGN CONSIDERATIONS OF ANY MATERIALS IN THE STRUCTURE WHICH ARE NOT FURNISHED BY THE METAL BUILDING SYSTEM MANUFACTURER ARE THE RESPONSIBILITY OF THE CONTRACTORS AND ENGINEERS OTHER THAN THE METAL BUILDING SYSTEM MANUFACTURER'S ENGINEER UNLESS SPECIFICALLY INDICATED.

THE CONTRACTOR IS RESPONSIBLE FOR ALL ERECTION OF STEEL AND ASSOCIATED WORK IN COMPLIANCE WITH THE METAL BUILDING SYSTEM MANUFACTURER "FOR CONSTRUCTION" DRAWINGS.

ALL BRACING AS SHOWN AND PROVIDED BY THE METAL BUILDING SYSTEM MANUFACTURER FOR THIS BUILDING IS REQUIRED AND SHALL BE INSTALLED BY THE ERECTOR AS A PERMANENT PART OF THE STRUCTURE.

TEMPORARY SUPPORTS, SUCH AS TEMPORARY GUYS, BRACES, FALSE WORK, CRIBBING OR OTHER ELEMENTS REQUIRED FOR THE ERECTION OPERATION WILL BE DETERMINED AND FURNISHED AND INSTALLED BY THE ERECTOR. THESE TEMPORARY SUPPORTS WILL SECURE THE STEEL FRAMING, OR ANY PARTLY ASSEMBLED STEEL FRAMING, AGAINST LOADS COMPARABLE IN INTENSITY TO THOSE FOR WHICH THE STRUCTURE WAS DESIGNED, RESULTING FROM WIND, SEISMIC FORCES AND ERECTION OPERATIONS, BUT NOT THE LOADS RESULTING FROM THE PERFORMANCE OF WORK BY OR THE ACTS OF OTHERS, NOR SUCH UNPREDICTABLE LOADS AS THOSE DUE TO TORNADO, EXPLOSION, OR COLLISION. (SECT. 7.9.1 AISC CODE OF STANDARD PRACTICE, 9TH ED.)

WARNING: IN NO CASE SHOULD GALVALUME STEEL PANELS BE USED IN CONJUNCTION WITH LEAD OR COPPER. BOTH LEAD AND COPPER HAVE HARMFUL CORROSION EFFECTS ON THE ALUMINUM ZINC ALLOY COATING WHEN THEY ARE USED IN CONTACT WITH GALVALUME STEEL PANELS. EVEN RUN-OFF FROM COPPER FLASHING, WIRING, OR TUBING ONTO GALVALUME SHOULD BE AVOIDED.

APPROVAL NOTES

THE FOLLOWING CONDITIONS APPLY IN THE EVENT THAT THESE DRAWINGS ARE USED AS APPROVAL DRAWINGS: IT IS IMPERATIVE THAT ANY CHANGES TO THESE DRAWINGS BE MADE IN CONTRASTING INK (PREFERABLY RED INK), HAVE ALL INSTANCES OF CHANGE CLEARLY INDICATED, AND BE LEGIBLE AND UNAMBIGUOUS. A SIGNATURE AND DATE IS REQUIRED ON ALL PAGES. MANUFACTURER RESERVES THE RIGHT TO RE-SUBMIT DRAWINGS WITH EXTENSIVE OR COMPLEX CHANGES REQUIRED TO AVOID MISFABRICATION. THIS MAY IMPACT THE DELIVERY SCHEDULE. APPROVAL OF THESE DRAWINGS INDICATES CONCLUSIVELY THAT THE METAL BUILDING SYSTEM MANUFACTURER HAS CORRECTLY INTERPRETED THE CONTRACT REQUIREMENTS, AND FURTHER CONSTITUTES AGREEMENT THAT THE BUILDING AS DRAWN WITH INDICATED CHANGES REPRESENTS THE TOTAL OF THE MATERIALS TO BE SUPPLIED BY MANUFACTURER. ANY CHANGES NOTED ON THE DRAWINGS NOT IN COMFORMANCE WITH THE TERMS AND REQUIREMENTS OF THE CONTRACT BETWEEN MANUFACTURER AND ITS CUSTOMER ARE NOT BINDING ON MANUFACTURER UNLESS SUBSEQUENTLY SPECIFICALLY ACKNOWLEDGED AND AGREED TO IN WRITING BY CHANGE ORDER OR SEPARATE DOCUMENTATION. MANUFACTURER RECONGNIZES THAT RUBBER STAMPS ARE ROUTINELY USED FOR INDICATING APPROVAL, DISAPPROVAL, REJECTION, OR MERE REVIEW OF THE DRAWINGS SUBMITTED. HOWEVER, MANUFACTURER DOES NOT ACCEPT CHANGES OR ADDITIONS TO CONTRACTUAL TERMS AND CONDITIONS THAT MAY APPEAR WITH USE OF A STAMP OR SIMILIAR INDICATIOIN OF APPROVAL, DISAPPROVAL, ETC. SUCH LANGUAGE APPLIED TO MANUFACTURER'S DRAWINGS BY THE CUSTOMER, ARCHITECT, ENGINEER, OR ANY OTHER PARTY WILL BE CONSIDERED AS UNACCEPTABLE ALTERNATIONS TO THESE DRAWING NOTES, AND WILL NOT ALTER THE CONTRACTUAL RIGHTS AND OBLIGATIONS EXISTING BETWEEN MANUFACTURER AND ITS CUSTOMER.

IMPORTANT NOTE: FINAL DETAILING, FABRICATION, AND DELIVERY DATE OF THIS PROJECT CANNOT BE COMPLETED UNTIL THE SIGNED APPROVALS ARE RETURNED TO THE METAL BUILDING MANUFACTURER.

△		
△		
△		
△		
△	..J..	FOR CONSTRUCTION
△	..J..	FOR APPROVAL
REV.	DATE	REVISION

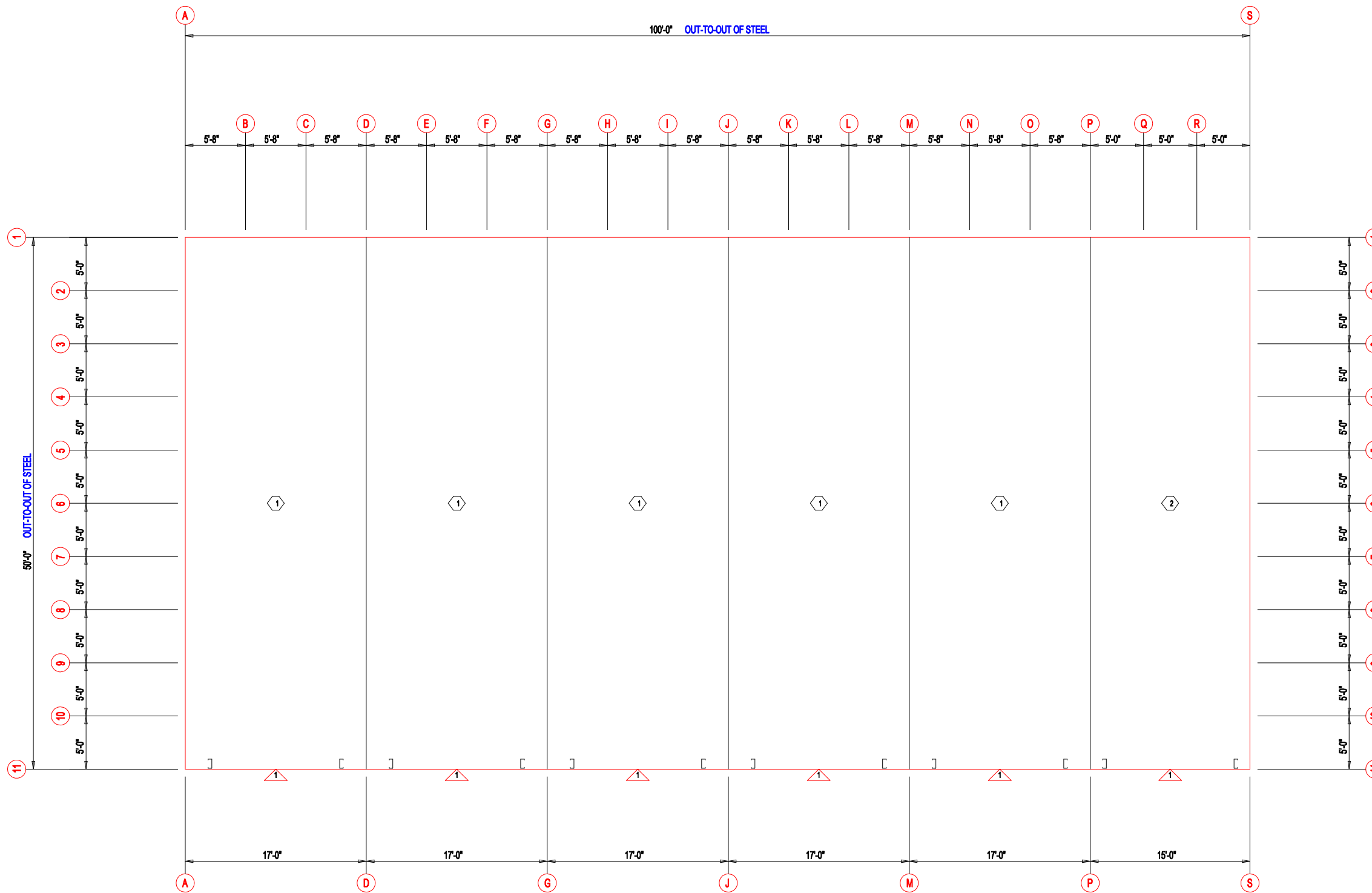
PURCHASER: DLR
PROJECT: MEGA STORAGE LEES SUMMIT
JOB NUMBER: MEGASTORAGELEESUMMITBUILDING#1#3

DOOR SCHEDULE

ID	QUAN	DESCRIPTION	COLOR
1	6	Janus 1214 M1950 Rollup	Silhouette Gray

COMPARTMENT TABLE

ID	QUAN	WIDTH	LENGTH
1	5	17'-0"	50'-0"
2	1	15'-0"	50'-0"



FLOOR PLAN



906 West 9th Street Pella, IA 50219
(800) 225-0481 www.pellabuildings.com

DESCRIPTION: FLOOR PLAN		PROJECT: MEGA STORAGE LEES SUMMIT	
CUSTOMER: DLR		LOCATION: LEES SUMMIT MO	
DRN. BY: JB	CKD BY: DES	DATE: 1/17/22	SCALE: N.T.S.
REV: 00	QUOTATION NO.: MEGASTORAGELEESUMMITBUILDING#1#3	SHEET NO.:	

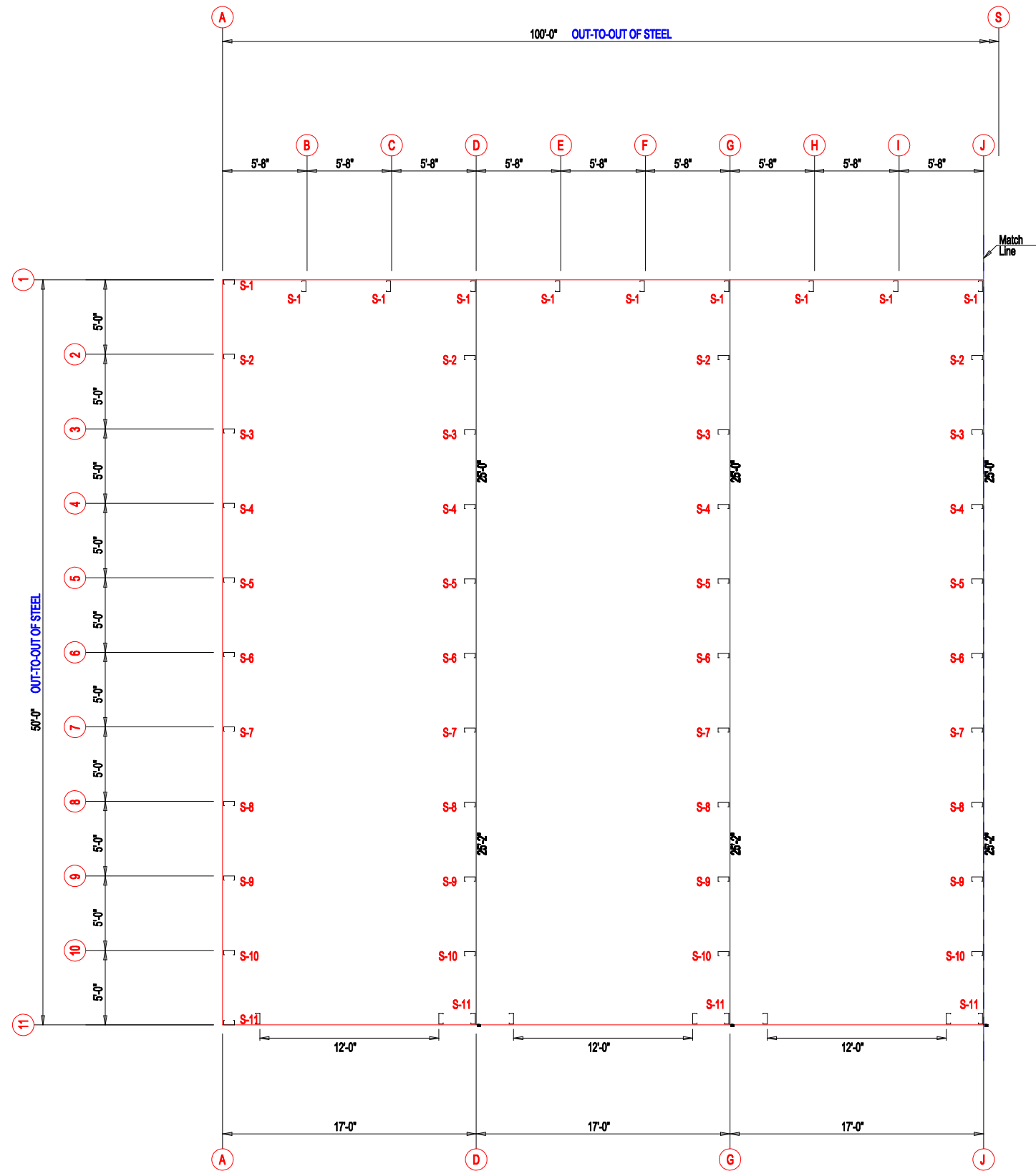


ANCHOR PLAN



906 West 9th Street Pella, IA 50219
 (800) 225-0481 www.pellabuildings.com

DESCRIPTION: ANCHOR PLAN					
CUSTOMER: DLR			PROJECT: MEGA STORAGE LEES SUMMIT		
LOCATION: LEES SUMMIT MO					
DRN. BY	CKD BY	DATE	SCALE	REV.	QUOTATION NO.
JB	DES	1/17/22	N.T.S.	00	MEGASTORAGELEESUMMITBUILDING#1#3
					SHEET NO.



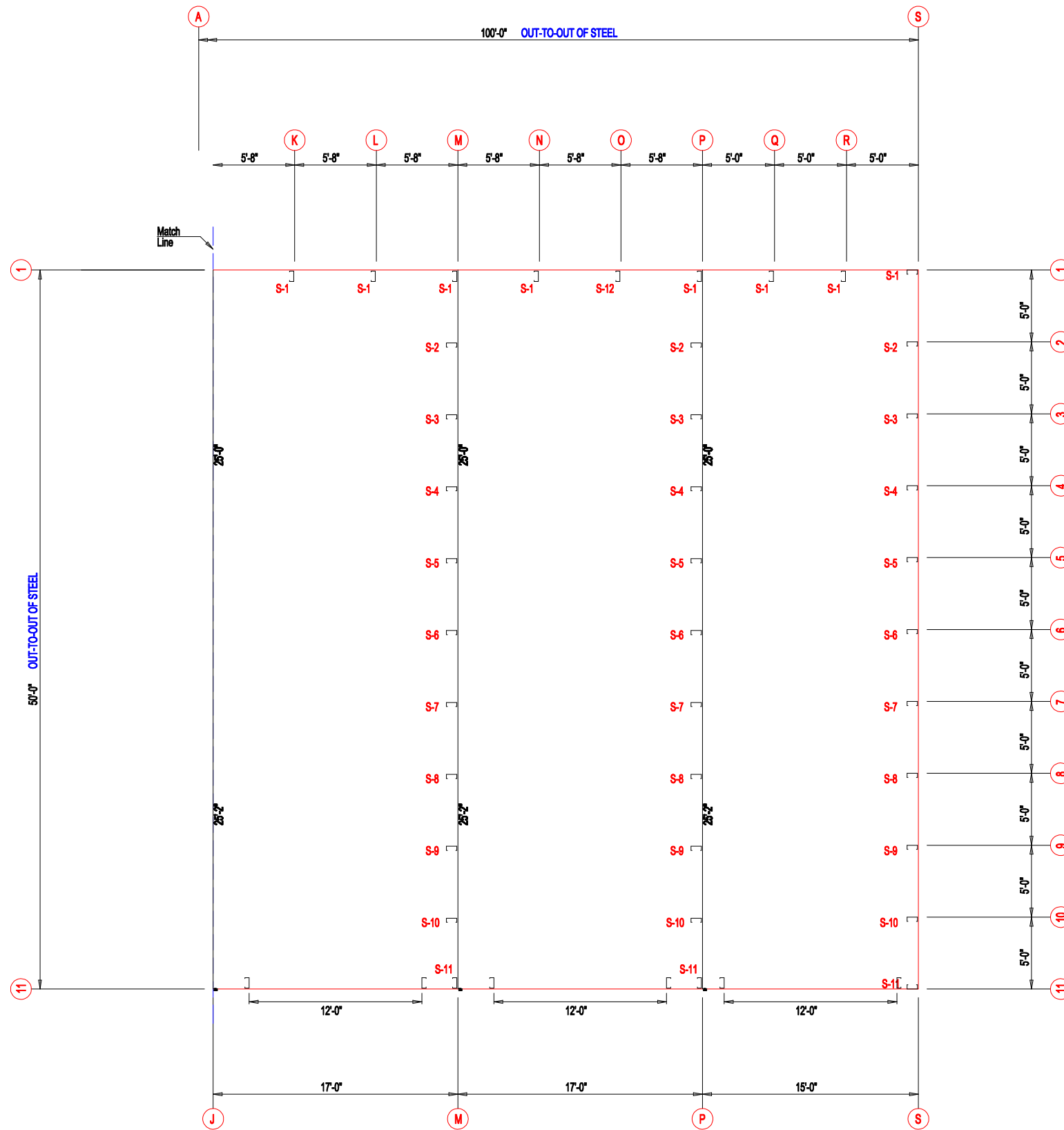
FLOOR PLAN

MEMBER TABLE		
MARK	PART	LENGTH
S-1	6X2C16	14'-9 1/2"
S-2	6X2C16	15'-0"
S-3	6X2C16	15'-2 1/2"
S-4	6X2C16	15'-5"
S-5	6X2C16	15'-7 1/2"
S-6	6X2C16	15'-10"
S-7	6X2C16	16'-0 1/2"
S-8	6X2C16	16'-3"
S-9	6X2C16	16'-5 1/2"
S-10	6X2C16	16'-8"
S-11	6X2C16	17'-0"



906 West 9th Street Pella, IA 50219
(800) 225-0481 www.pellabuildings.com

DESCRIPTION: FLOOR PLAN					
CUSTOMER: DLR			PROJECT: MEGA STORAGE LEES SUMMIT		
LOCATION: LEES SUMMIT MO					
DRN. BY JB	CK'D BY DES	DATE 1/17/22	SCALE N.T.S.	REV. 00	QUOTATION NO. MEGASTORAGELEESUMMITBUILDING#1#3
					SHEET NO.



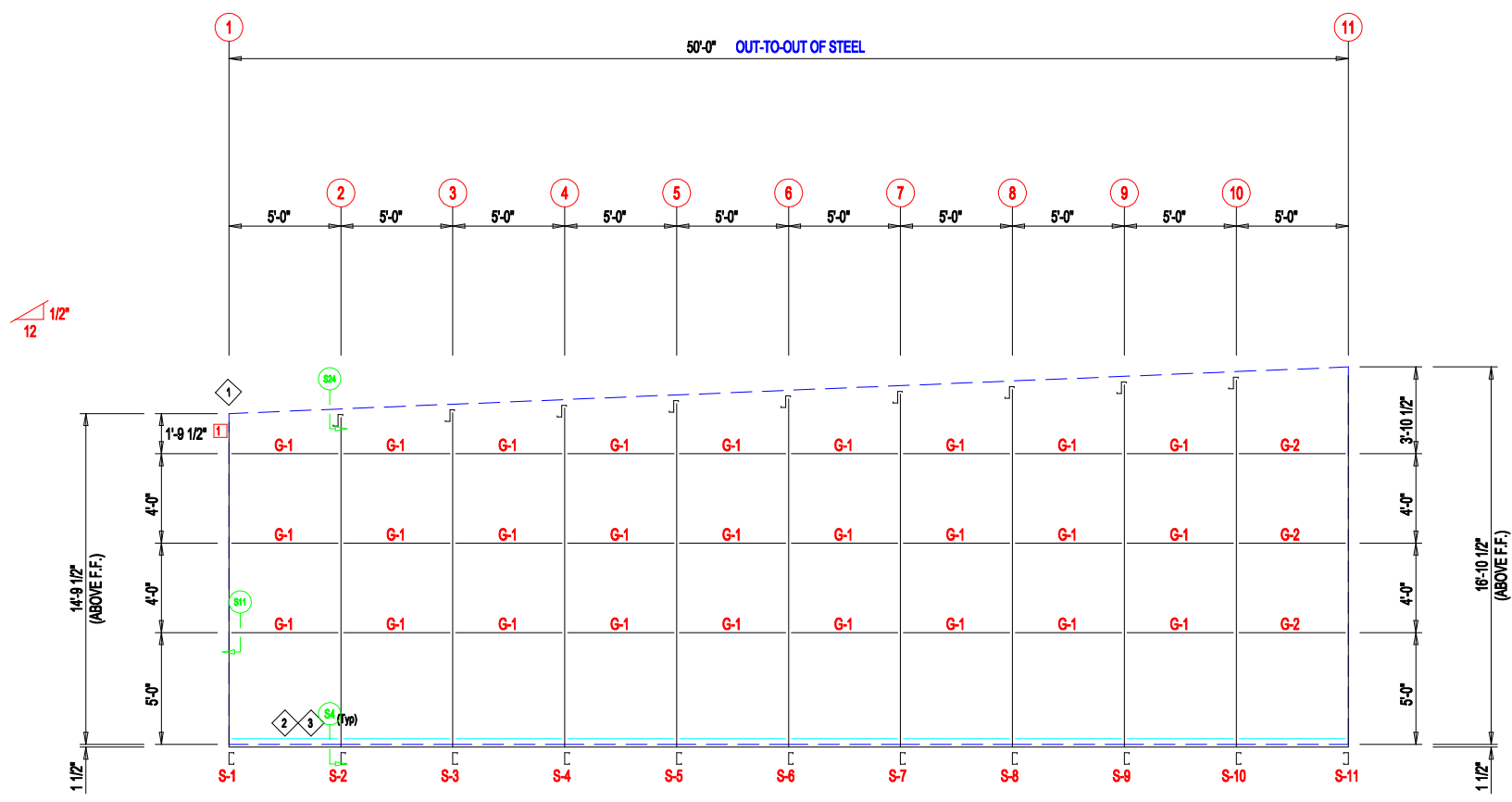
FLOOR PLAN

MEMBER TABLE		
MARK	PART	LENGTH
S-1	6X2C16	14'-9 1/2"
S-2	6X2C16	15'-0"
S-3	6X2C16	15'-2 1/2"
S-4	6X2C16	15'-5"
S-5	6X2C16	15'-7 1/2"
S-6	6X2C16	15'-10"
S-7	6X2C16	16'-0 1/2"
S-8	6X2C16	16'-3"
S-9	6X2C16	16'-5 1/2"
S-10	6X2C16	16'-8"
S-11	6X2C16	17'-0"
S-12	6X25C14	14'-9 1/2"

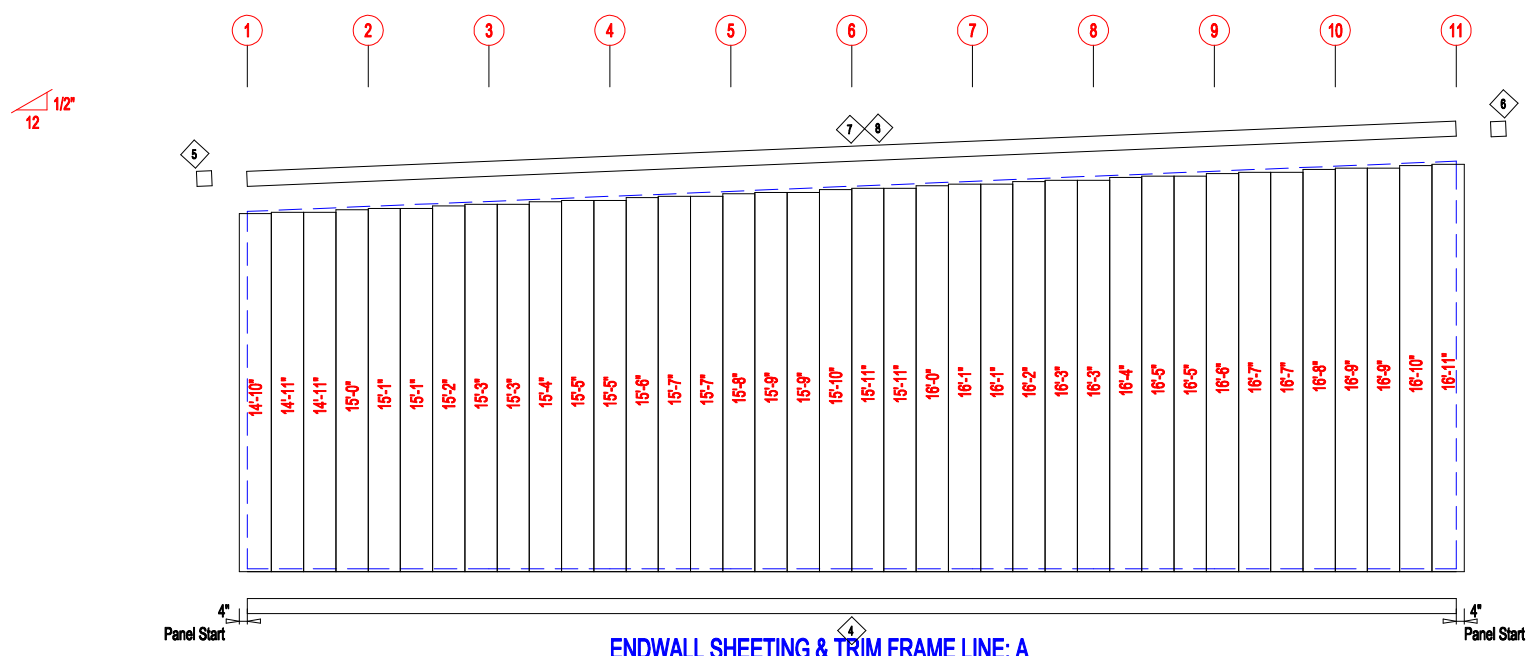


906 West 9th Street Pella, IA 50219
(800) 225-0481 www.pellabuildings.com

DESCRIPTION: FLOOR PLAN					
CUSTOMER: DLR			PROJECT: MEGA STORAGE LEES SUMMIT		
LOCATION: LEES SUMMIT MO					
DRN. BY	CK'D BY	DATE	SCALE	REV.	QUOTATION NO.
JB	DES	1/17/22	N.T.S.	00	MEGASTORAGELEESUMMITBUILDING#1#3
					SHEET NO.



ENDWALL FRAMING FRAME LINE: A



ENDWALL SHEETING & TRIM FRAME LINE: A

PANELS: 20 Ga. CP - NEED SIG 200

TRIM TABLE			
ID	PART	LENGTH	DETAIL
4	FL72	10'-2"	TRIM_74
5	FL16A	6"	
6	FL16A	6"	
7	FL16	10'-2"	TRIM_229
8	FL16D	20'-2"	TRIM_229

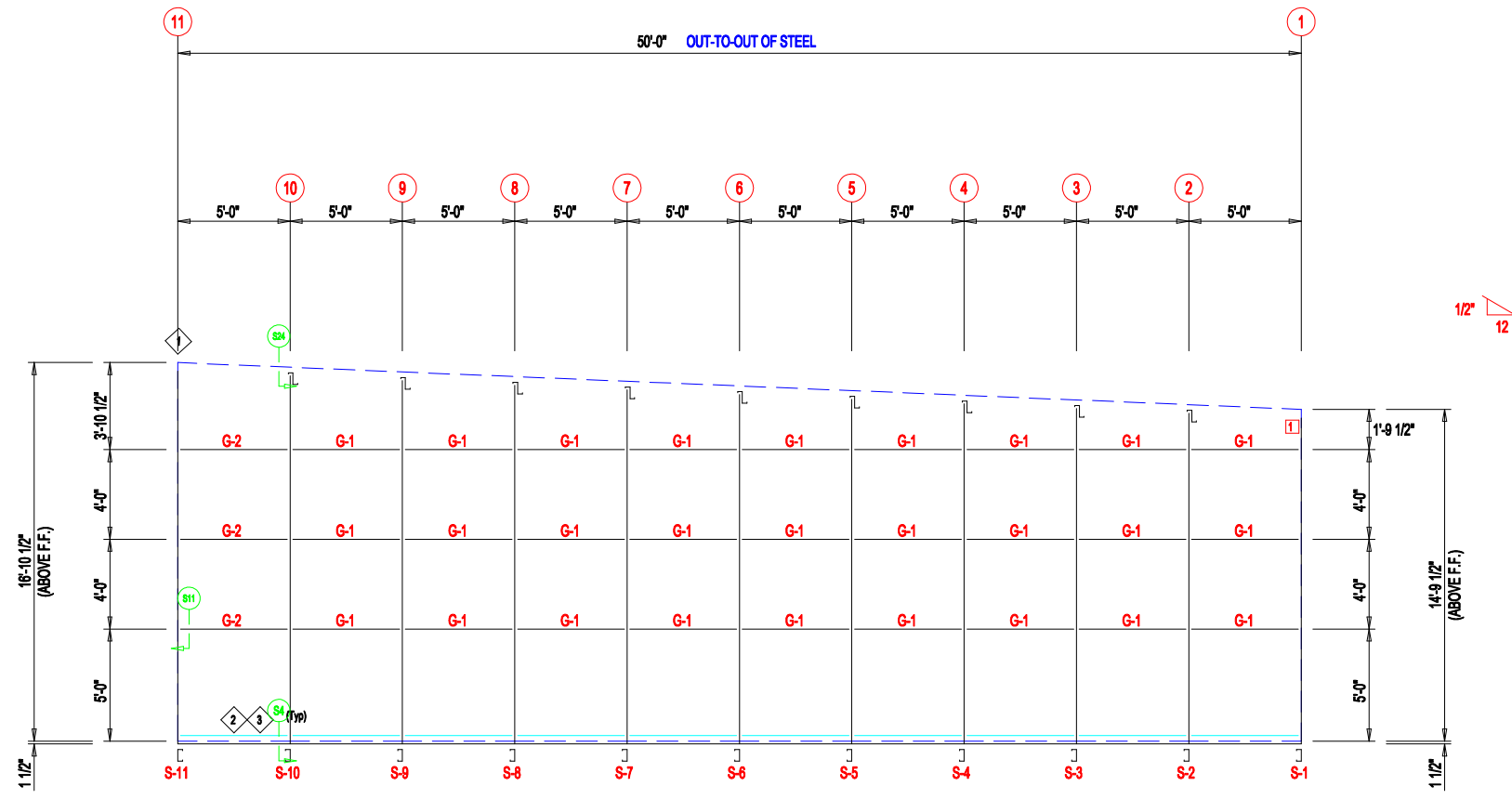
MEMBER TABLE		
MARK	PART	LENGTH
S-1	6X2C16	14'-9 1/2"
S-2	6X2C16	15'-0"
S-3	6X2C16	15'-2 1/2"
S-4	6X2C16	15'-5"
S-5	6X2C16	15'-7 1/2"
S-6	6X2C16	15'-10"
S-7	6X2C16	16'-0 1/2"
S-8	6X2C16	16'-3"
S-9	6X2C16	16'-5 1/2"
S-10	6X2C16	16'-8"
S-11	6X2C16	17'-0"
G-1	4X20C16	4'-9 1/2"
G-2	4X20C16	4'-7 1/2"

ANGLE TABLE		
ID	MARK	LENGTH
1	L3x3	20'-0"
2	BC-6	20'-0"
3	BC-6	SCRAP

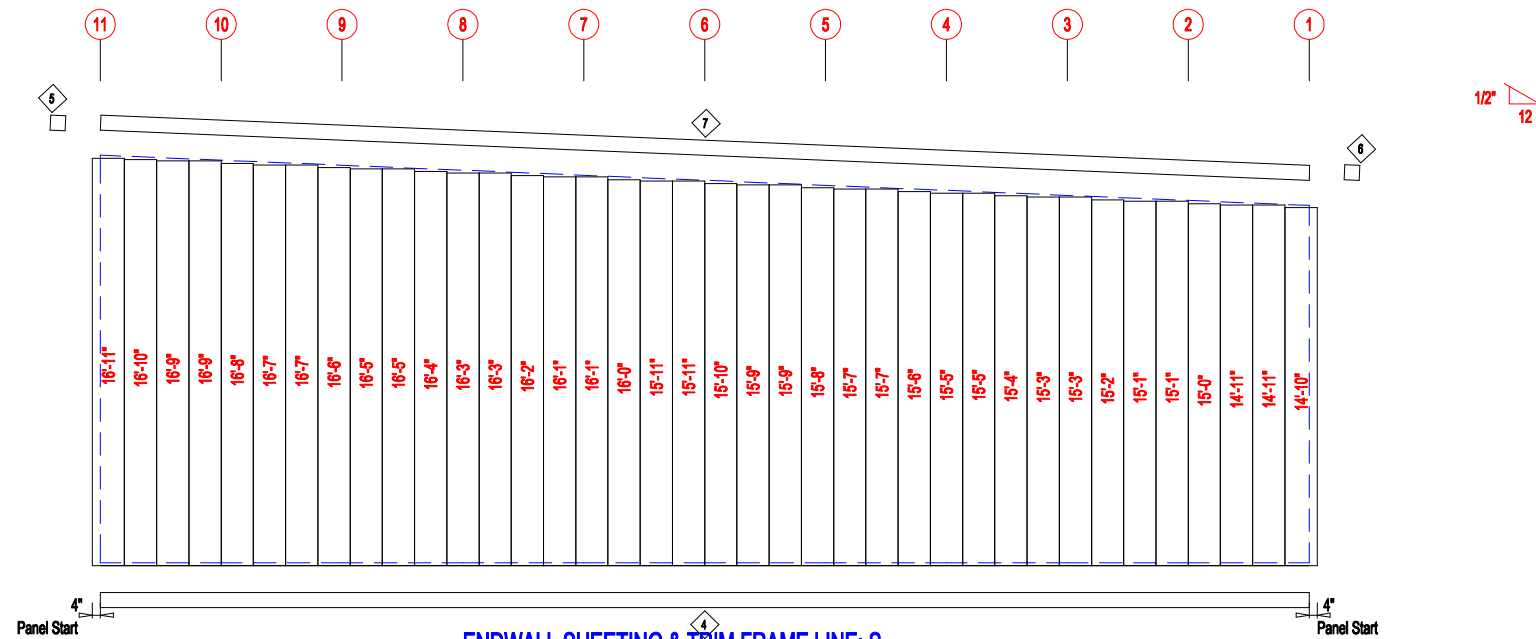
CONNECTION PLATES	
ID	MARK/PART
1	MCLP



DESCRIPTION: ENDWALL DRAWING		PROJECT: MEGA STORAGE LEES SUMMIT	
CUSTOMER: DLR		LOCATION: LEES SUMMIT MO	
DRN. BY: JB	CKD BY: DES	DATE: 1/17/22	SCALE: N.T.S.
REV: 00	QUOTATION NO. MEGASTORAGELEESUMMITBUILDING#1#3	SHEET NO.	



ENDWALL FRAMING FRAME LINE: S



ENDWALL SHEETING & TRIM FRAME LINE: S

PANELS: 20 Ga. CP - NEED SIG 200

TRIM TABLE			
ID	PART	LENGTH	DETAIL
4	FL72	10'-2"	TRIM_74
5	FL16A	6"	
6	FL16A	6"	
7	FL16D	20'-2"	TRIM_229

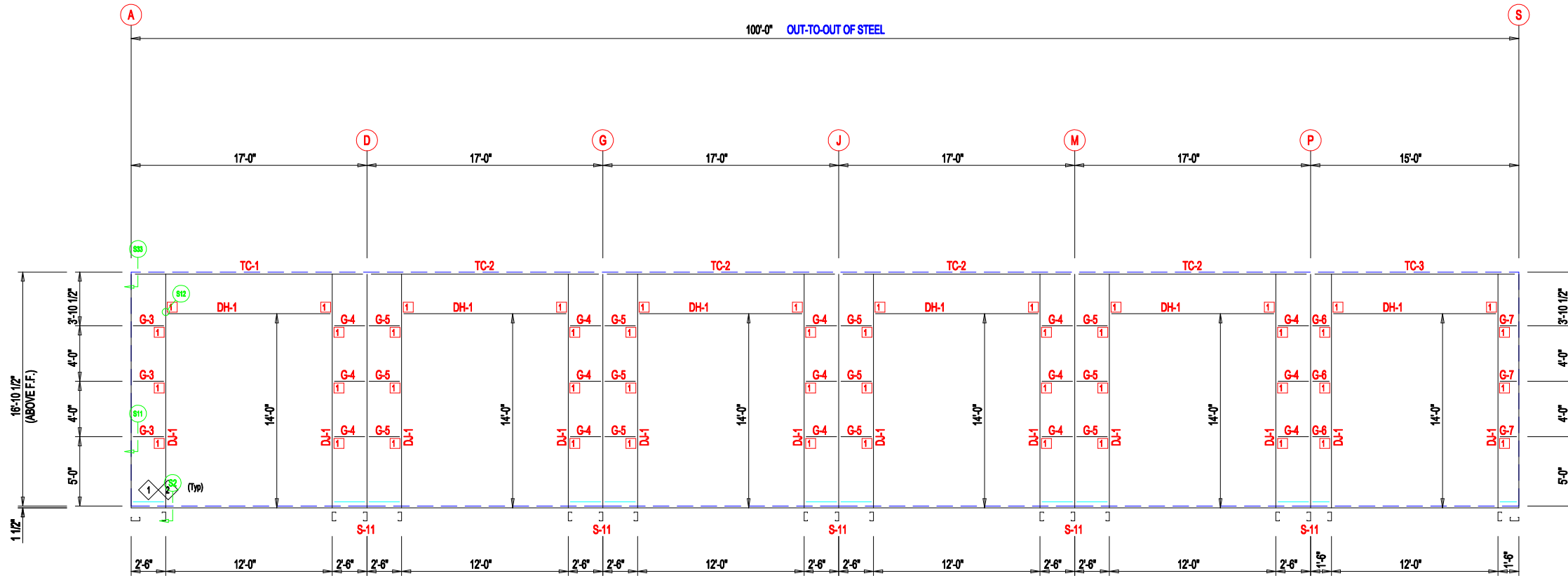
MEMBER TABLE		
MARK	PART	LENGTH
S-1	6X2C16	14'-9 1/2"
S-2	6X2C16	15'-0"
S-3	6X2C16	15'-2 1/2"
S-4	6X2C16	15'-5"
S-5	6X2C16	15'-7 1/2"
S-6	6X2C16	15'-10"
S-7	6X2C16	16'-0 1/2"
S-8	6X2C16	16'-3"
S-9	6X2C16	16'-5 1/2"
S-10	6X2C16	16'-8"
S-11	6X2C16	17'-0"
G-1	4X20C16	4'-9 1/2"
G-2	4X20C16	4'-7 1/2"

ANGLE TABLE		
ID	MARK	LENGTH
1	L3x3	20'-0"
2	BC-6	20'-0"
3	BC-6	SCRAP

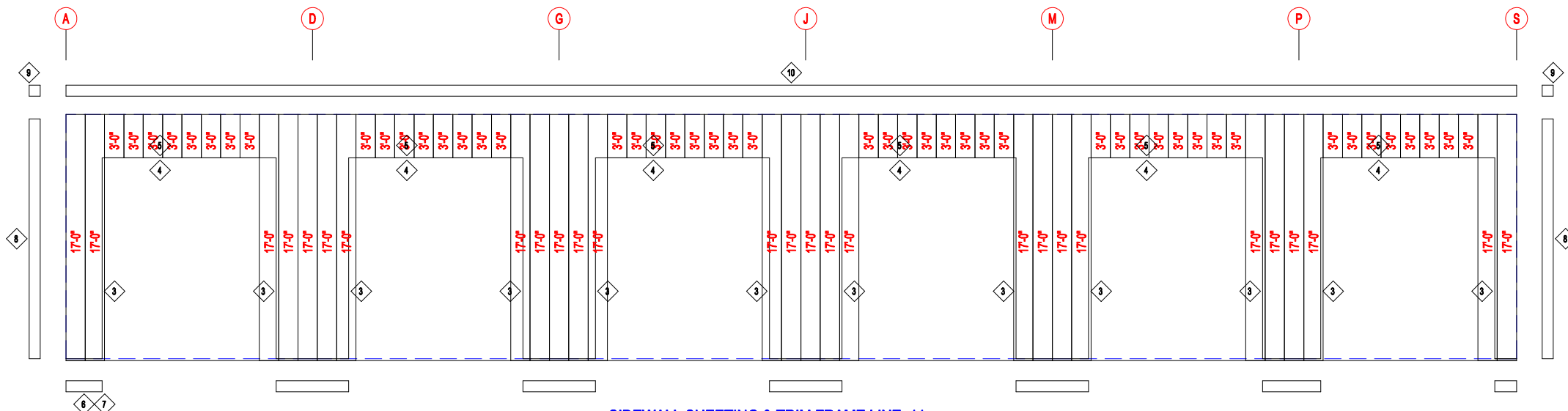
CONNECTION PLATES	
ID	MARK/PART
1	MCLP



DESCRIPTION: ENDWALL DRAWING		PROJECT: MEGA STORAGE LEES SUMMIT	
CUSTOMER: DLR		LOCATION: LEES SUMMIT MO	
DRN. BY: JB	CKD BY: DES	DATE: 1/17/22	SCALE: N.T.S.
REV: 00	QUOTATION NO. MEGASTORAGELEESUMMITBUILDING#1#3	SHEET NO.	



SIDEWALL FRAMING FRAME LINE: 11



SIDEWALL SHEETING & TRIM FRAME LINE: 11

PANELS: 20 Ga. CP - NEED SIG 200

ID	PART	LENGTH	DETAIL
3	FL23X	14'-2"	TRIM_239
4	FL-HC6	12'-1"	TRIM_235
5	FL26B	20'-2"	TRIM_232
6	FL72	10'-2"	TRIM_74
7	FL72	SCRAP	TRIM_74
8	FL835x	17'-0"	TRIM_198
9	FL16C	6"	
10	FL17A	20'-2"	TRIM_322

MARK	PART	LENGTH
S-11	6X2C16	17'-0"
DJ-1	6X40C14	17'-0"
TC-1	6X2CH16	16'-11 3/4"
TC-2	6X2CH16	17'-0"
TC-3	6X2CH16	14'-11 3/4"
DH-1	6X25C16	11'-11 1/2"
G-3	4X20C16	1'-8"
G-4	4X20C16	1'-11 3/4"
G-5	4X20C16	2'-1 3/4"
G-6	4X20C16	1'-1 3/4"
G-7	4X20C16	8"

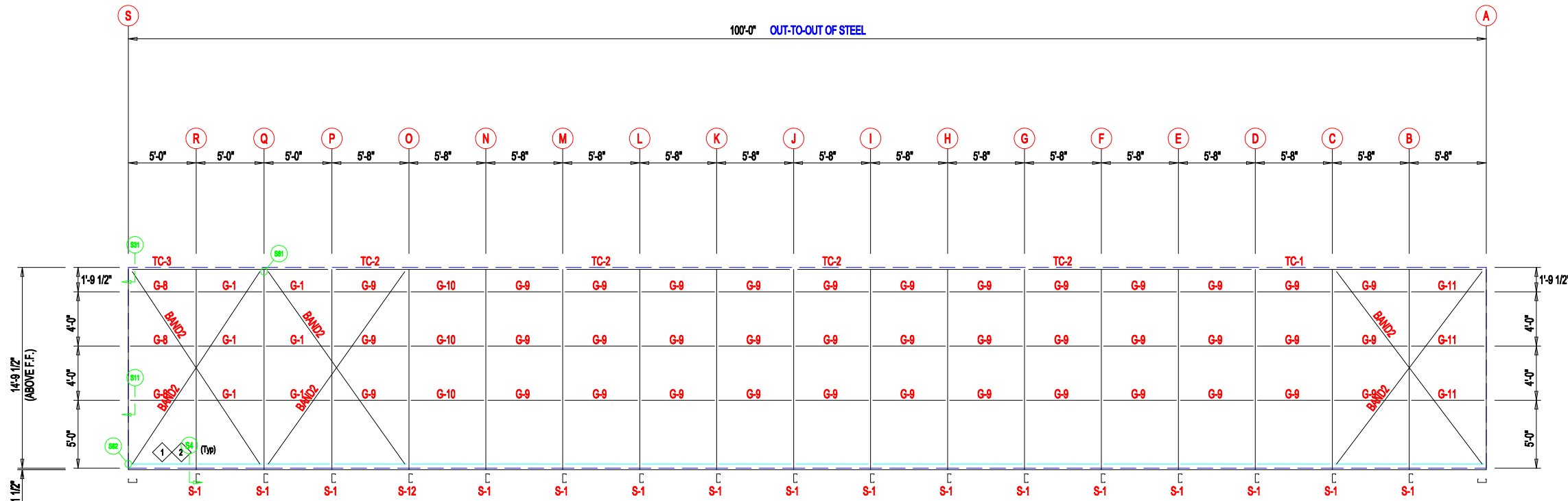
ID	MARK	LENGTH
1	BC-6	20'-0"
2	BC-6	SCRAP

ID	MARK/PART
1	MCLP

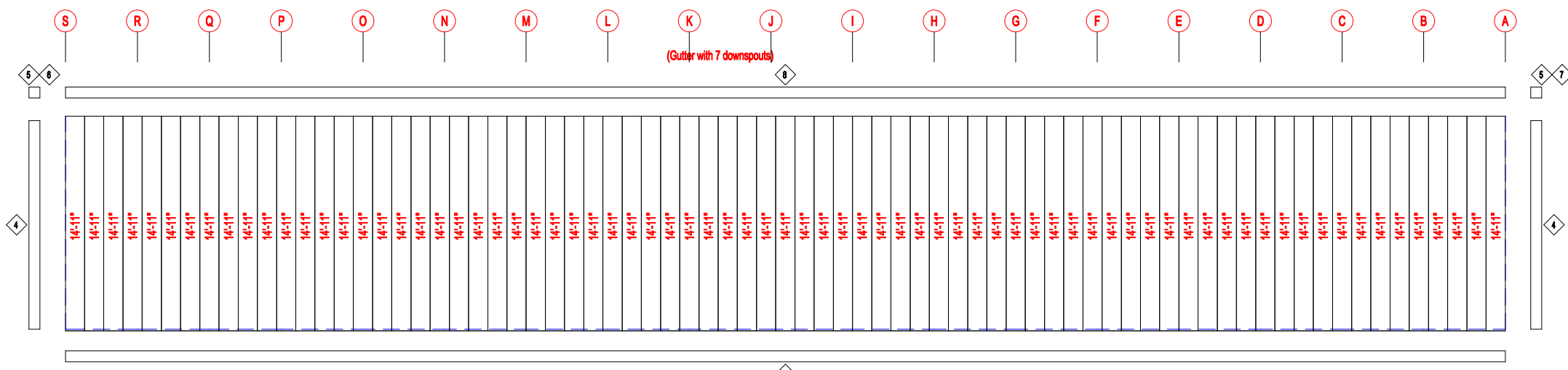


906 West 9th Street Pella, IA 50219
(800) 225-0481 www.pellabuildings.com

DESCRIPTION: SIDEWALL DRAWING		PROJECT: MEGA STORAGE LEES SUMMIT	
CUSTOMER: DLR		LOCATION: LEES SUMMIT MO	
DRN. BY: JB	CK'D BY: DES	DATE: 1/17/22	SCALE: N.T.S.
REV: 00	QUOTATION NO.: MEGASTORAGELEESUMMITBUILDING#1#3	SHEET NO.:	



SIDEWALL FRAMING FRAME LINE: 1



SIDEWALL SHEETING & TRIM FRAME LINE: 1
PANELS: 20 Ga. CP - NEED SIG 200

TRIM TABLE			
ID	PART	LENGTH	DETAIL
3	FL72	10'-2"	TRIM_74
4	FL835x	14'-11"	TRIM_198
5	FL16C	6"	
6	FL18A	6"	
7	FL18A	6"	
8	FL18D	20'-2"	

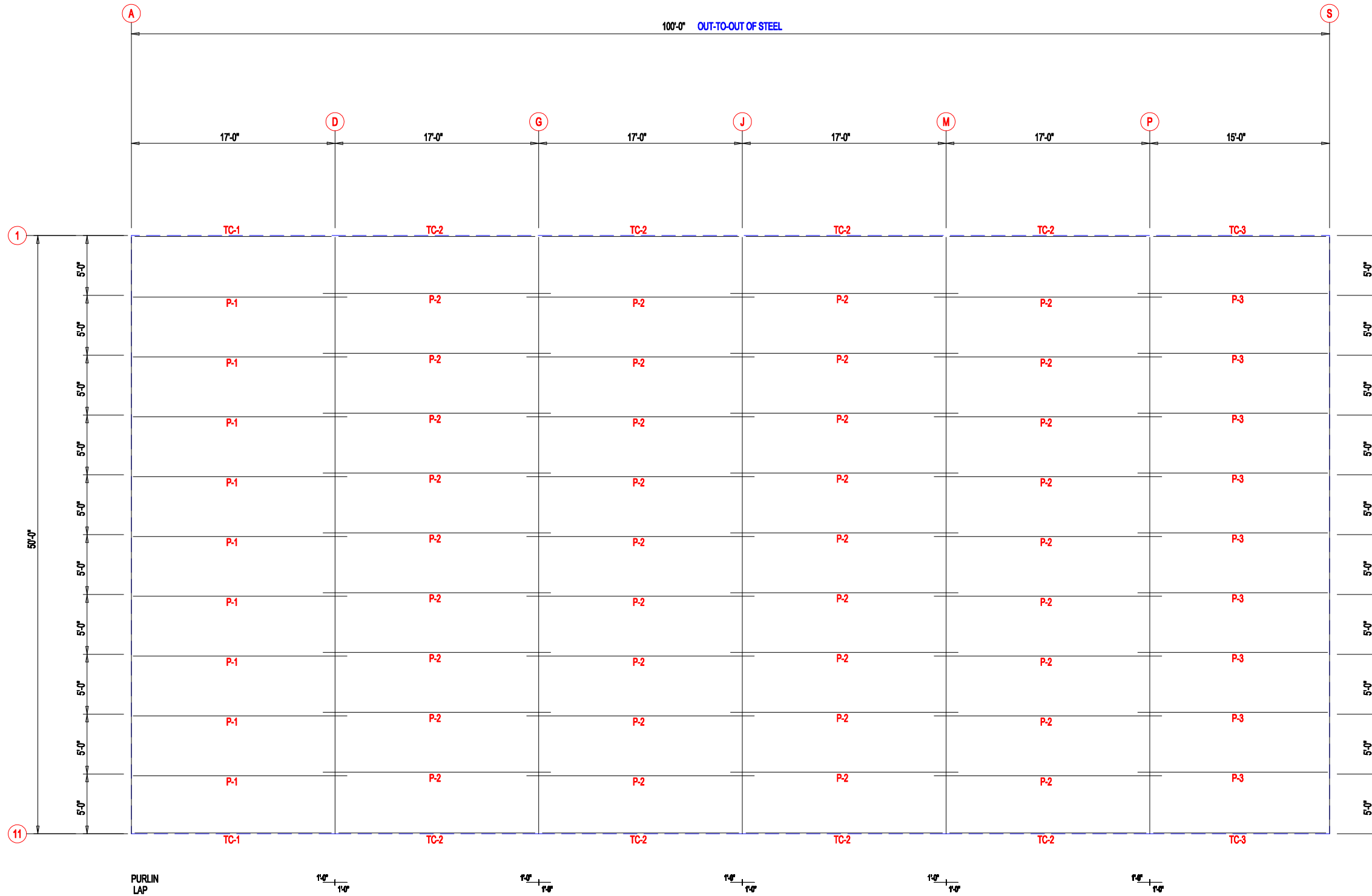
MEMBER TABLE		
MARK	PART	LENGTH
S-1	6X2C16	14'-9 1/2"
S-12	6X25C14	14'-9 1/2"
TC-1	6X2CH16	16'-11 3/4"
TC-2	6X2CH16	17'-0"
TC-3	6X2CH16	14'-11 3/4"
G-1	4X20C16	4'-9 1/2"
G-8	4X20C16	4'-5 3/4"
G-9	4X20C16	5'-5 1/2"
G-10	4X20C16	5'-5"
G-11	4X20C16	4'-11 3/4"

ANGLE TABLE		
ID	MARK	LENGTH
1	BC-6	20'-0"
2	BC-6	SCRAP




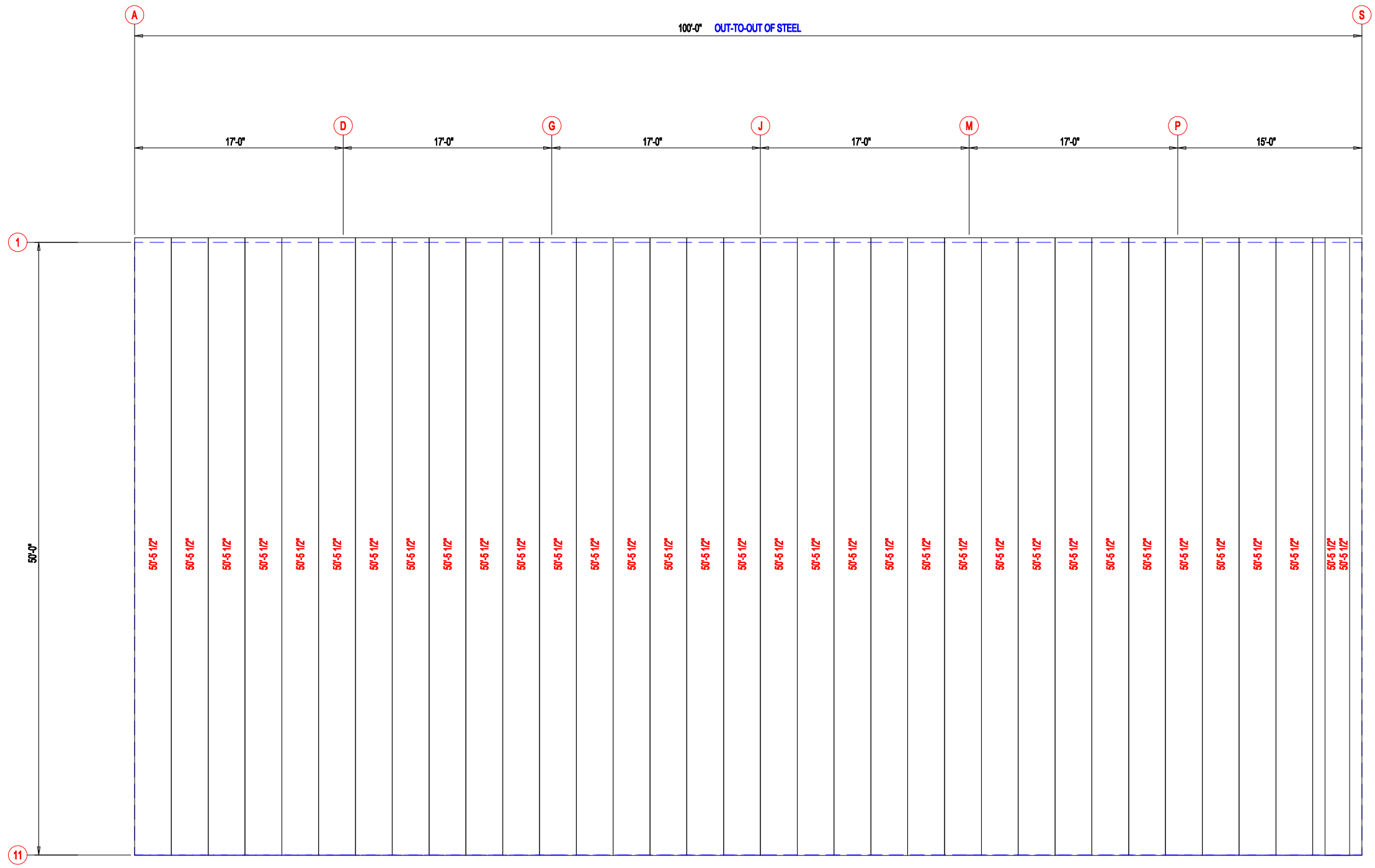
DESCRIPTION: SIDEWALL DRAWING		PROJECT: MEGA STORAGE LEES SUMMIT	
CUSTOMER: DLR		LOCATION: LEES SUMMIT MO	
DRN. BY: JB	CKD BY: DES	DATE: 1/17/22	SCALE: N.T.S.
REV: 00	QUOTATION NO.: MEGASTORAGELEESUMMITBUILDING#1#3	SHEET NO.:	

MEMBER TABLE		
MARK	PART	LENGTH
TC-1	6X2CH16	16'-11 3/4"
TC-2	6X2CH16	17'-0"
TC-3	6X2CH16	14'-11 3/4"
P-1	8X25Z16	18'-0"
P-2	8X25Z16	19'-0"
P-3	8X25Z16	16'-0"



ROOF FRAMING

 <p>PELLA BUILDING SYSTEMS</p> <p>906 West 9th Street Pella, IA 50219 (800) 225-0481 www.pellabuildings.com</p>	DESCRIPTION: ROOF FRAMING		CUSTOMER: DLR		PROJECT: MEGA STORAGE LEES SUMMIT	
	LOCATION: LEES SUMMIT MO		DRN. BY: JB		CKD BY: DES	
	DATE: 1/17/22		SCALE: N.T.S.		REV. 00	
	QUOTATION NO. MEGASTORAGELEESUMMITBUILDING#1#3		SHEET NO.			



ROOF SHEETING & TRIM
 PANELS: 26 Ga. PR - Galvalume+ w/ Drip Stop



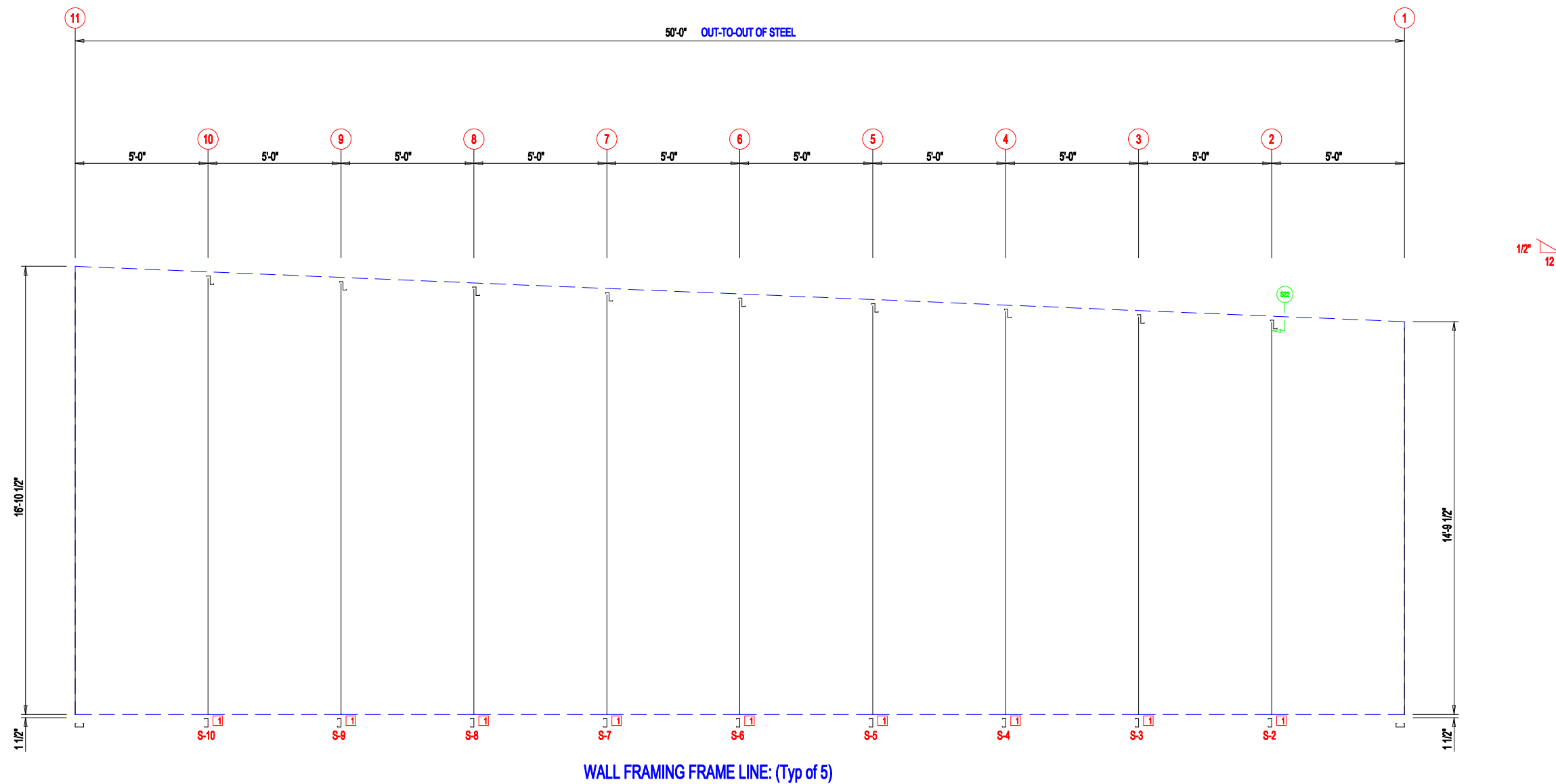
906 West 9th Street Pella, IA 50219
 (800) 225-0481 www.pellabuildings.com

DESCRIPTION: ROOF SHEETING					
CUSTOMER: DLR			PROJECT: MEGA STORAGE LEES SUMMIT		
LOCATION: LEES SUMMIT MO					
DRN. BY	CKD BY	DATE	SCALE	REV.	QUOTATION NO.
JB	DES	1/17/22	N.T.S.	00	MEGASTORAGELEESUMMITBUILDING#1#3
					SHEET NO.

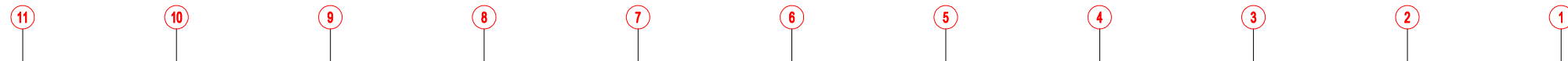
MEMBER TABLE		
MARK	PART	LENGTH
S-2	6X2C16	15'-0"
S-3	6X2C16	15'-2 1/2"
S-4	6X2C16	15'-5"
S-5	6X2C16	15'-7 1/2"
S-6	6X2C16	15'-10"
S-7	6X2C16	16'-0 1/2"
S-8	6X2C16	16'-3"
S-9	6X2C16	16'-5 1/2"
S-10	6X2C16	16'-8"

CONNECTION PLATES

ID	MARK/PART
1	FC



DESCRIPTION: PARTITION FRAMING		PROJECT: MEGA STORAGE LEES SUMMIT	
CUSTOMER: DLR		LOCATION: LEES SUMMIT MO	
DRN. BY: JB	CK'D BY: DES	DATE: 1/17/22	SCALE: N.T.S.
REV: 00	QUOTATION NO. MEGASTORAGELEESUMMITBUILDING#1#3	SHEET NO.	



25'-2"	25'-0"
25'-2"	25'-0"
25'-2"	25'-0"
25'-2"	25'-0"
25'-2"	25'-0"
25'-2"	25'-0"



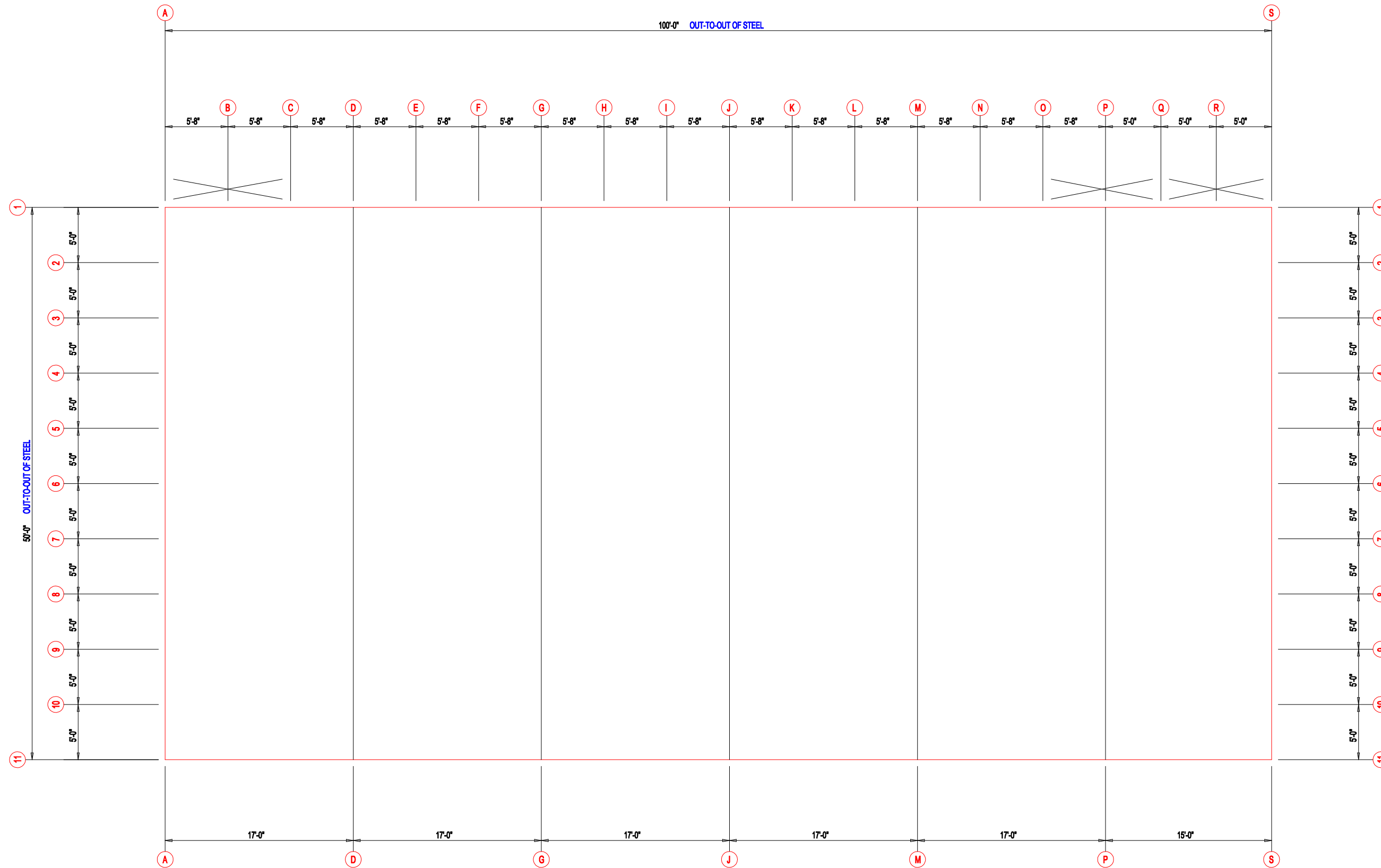
WALL SHEETING & TRIM FRAME LINE: (Typ of 5)

PANELS: 29 Ga. PR - Galvalume +



906 West 9th Street Pella, IA 50219
(800) 225-0481 www.pellabuildings.com

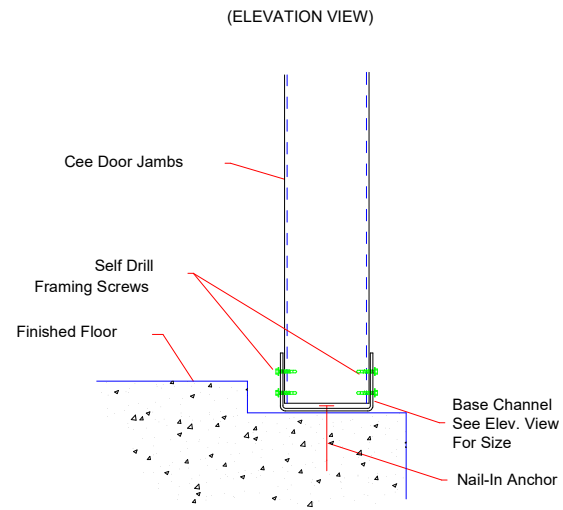
DESCRIPTION: PARTITION SHEETING					
CUSTOMER: DLR			PROJECT: MEGA STORAGE LEES SUMMIT		
LOCATION: LEES SUMMIT MO					
DRN. BY	CKD BY	DATE	SCALE	REV.	QUOTATION NO.
JB	DES	1/17/22	N.T.S.	00	MEGASTORAGELEESUMMITBUILDING#1#3
					SHEET NO.



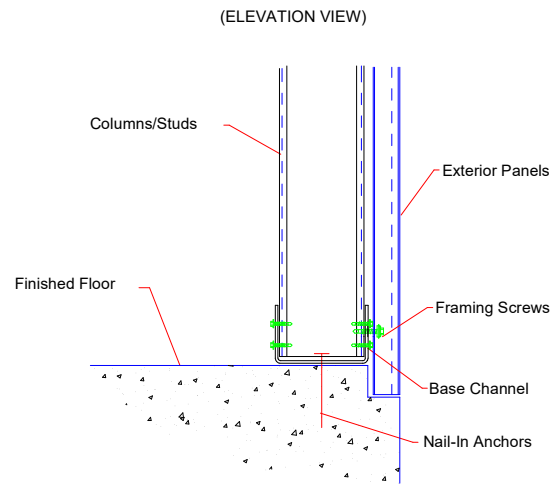
FLOOR PLAN



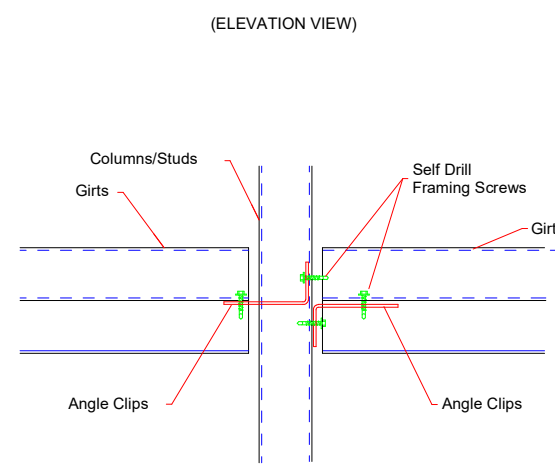
DESCRIPTION:		FLOOR PLAN	
CUSTOMER:		DLR	PROJECT: MEGA STORAGE LEES SUMMIT
LOCATION:		LEES SUMMIT MO	
DRN. BY	CKD BY	DATE	SCALE
JB	DES	1/17/22	N.T.S.
REV.	00	QUOTATION NO.	SHEET NO.
		MEGASTORAGELEESUMMITBUILDING#1#3	



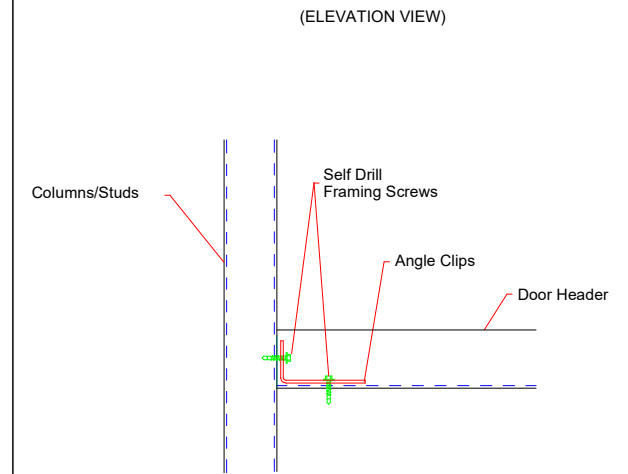
S2 BASE @ DOOR JAMB



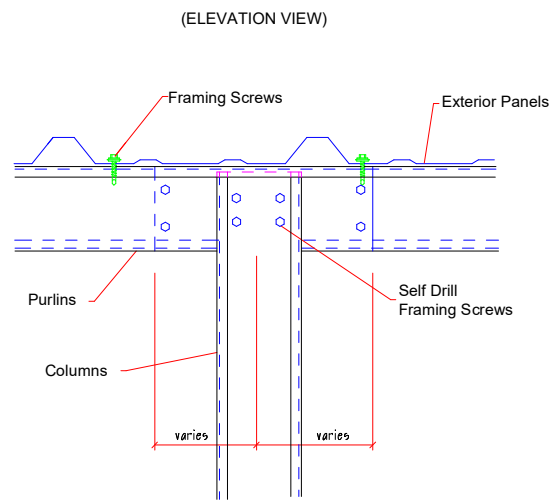
S4 COLUMN BASE @ SHEETED WALL



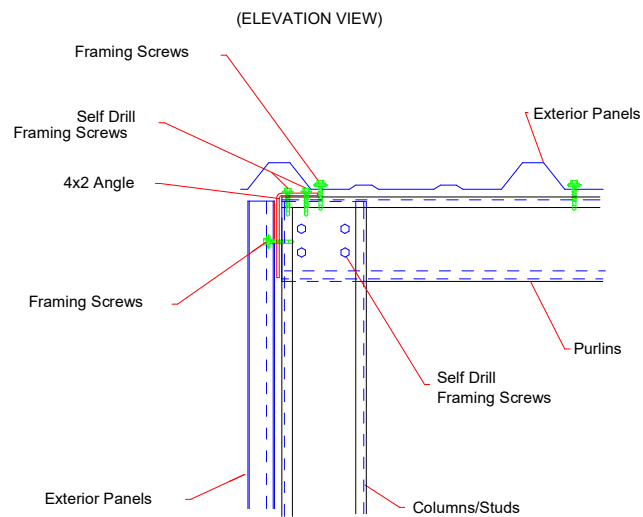
S11 GIRT CONNECTION



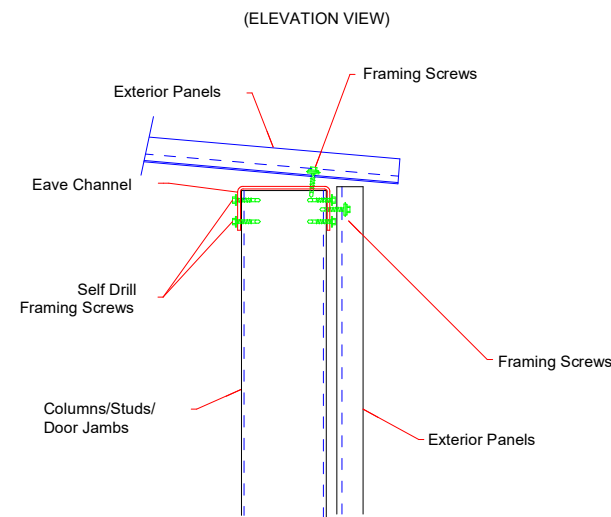
S12 DOOR HEADER TO JAMB



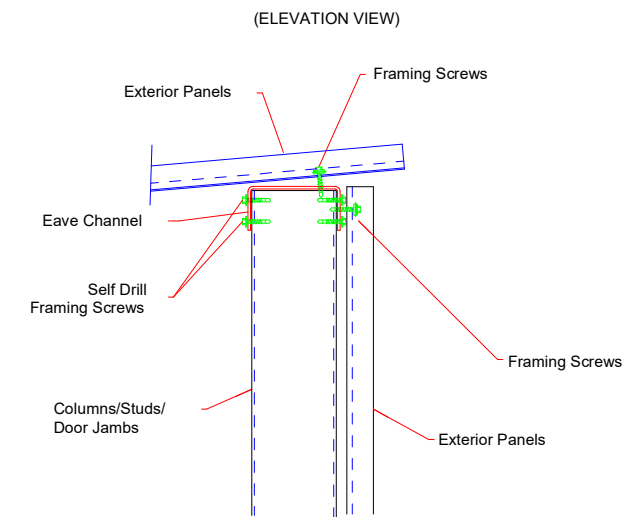
S22 COLUMN TO PURLIN @ LAP



S24 RAKE @ SHEETED ENDWALL



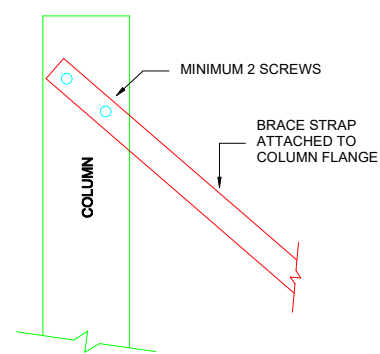
S31 EAVE



S33 EAVE

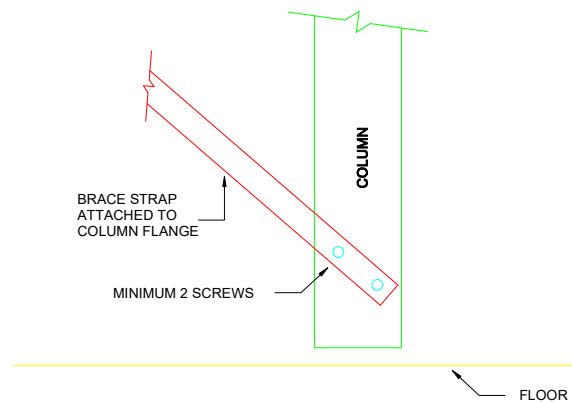


DESCRIPTION: DETAIL DRAWINGS					
CUSTOMER: DLR			PROJECT: MEGA STORAGE LEES SUMMIT		
LOCATION: LEES SUMMIT MO					
DRN. BY	CK'D BY	DATE	SCALE	REV.	QUOTATION NO.
JB	DES	1/17/22	N.T.S.	00	MEGASTORAGELEESUMMITBUILDING#1#3
					SHEET NO.



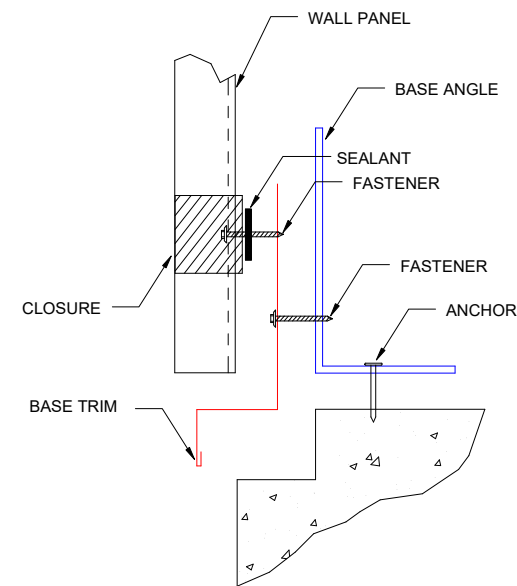
S81

BRACE STRAP TO COLUMN TOP



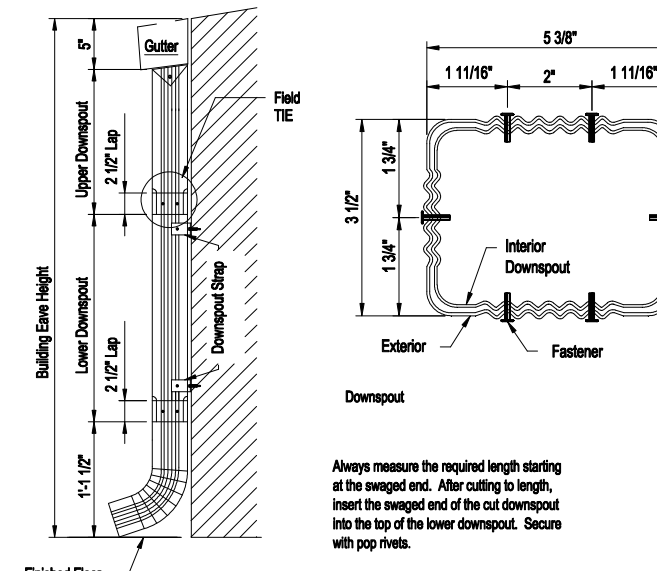
S82

BRACE STRAP TO COLUMN BOTTOM



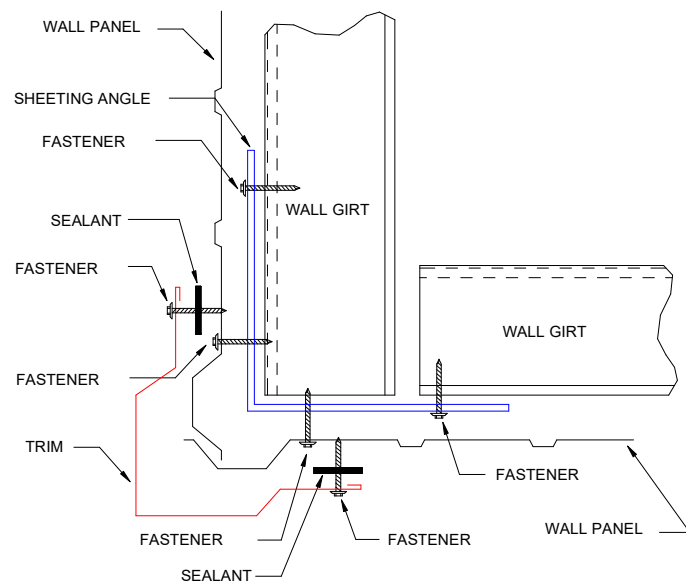
BASE SEAL

TRIM_74



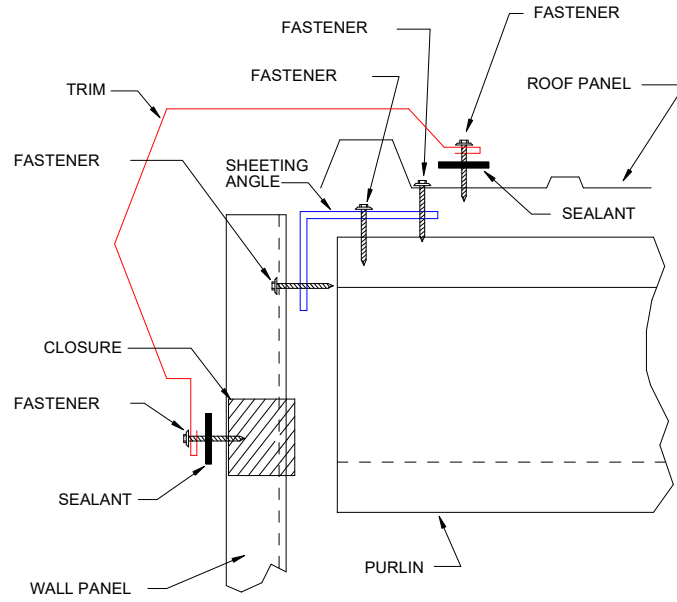
3 1/2" x 5 3/8" Roll Form Downspout Elevation

DRAWING NO. TRIM_175 1. A Downspout Strap is required at all Downspout Splices.



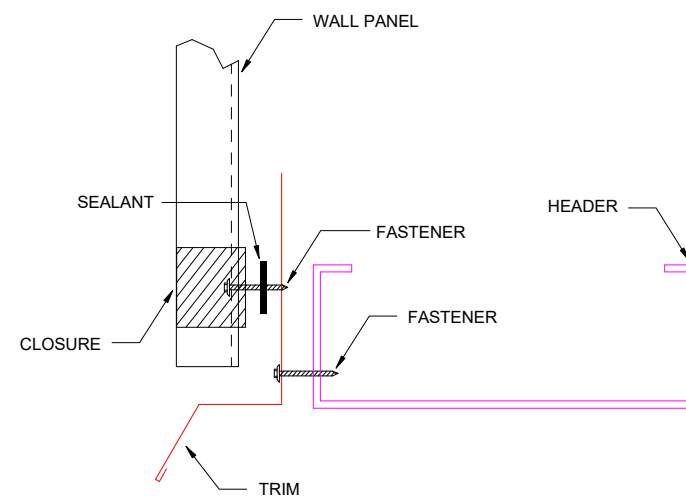
OUTSIDE CORNER

TRIM_198



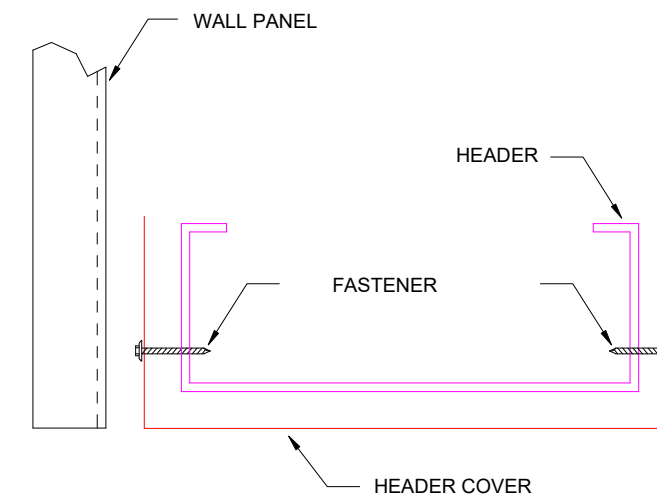
GABLE

TRIM_229



HEADER

TRIM_232



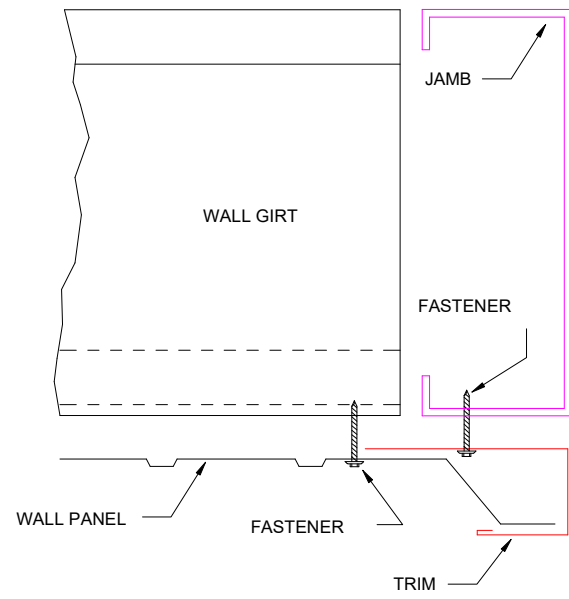
HEADER COVER

TRIM_235



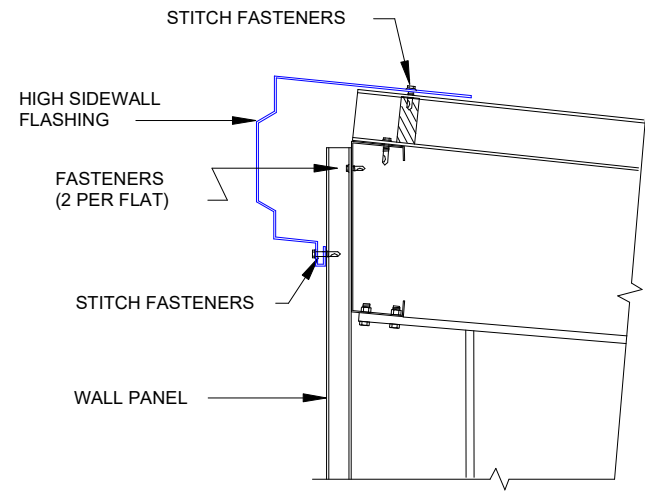
906 West 9th Street Pella, IA 50219
(800) 225-0481 www.pellabuildings.com

DESCRIPTION: DETAIL DRAWINGS					
CUSTOMER: DLR			PROJECT: MEGA STORAGE LEES SUMMIT		
LOCATION: LEES SUMMIT MO					
DRN. BY JB	CK'D BY DES	DATE 1/17/22	SCALE N.T.S.	REV. 00	QUOTATION NO. MEGASTORAGELEESUMMITBUILDING#1#3
					SHEET NO.



TRIM_239

JAMB



HIGH SIDE EAVE FLASHING

TRIM_322



906 West 9th Street Pella, IA 50219
(800) 225-0481 www.pellabuildings.com

DESCRIPTION: DETAIL DRAWINGS						
CUSTOMER: DLR				PROJECT: MEGA STORAGE LEES SUMMIT		
LOCATION: LEES SUMMIT MO						
DRN. BY	CK'D BY	DATE	SCALE	REV.	QUOTATION NO.	SHEET NO.
JB	DES	1/17/22	N.T.S.	00	MEGASTORAGELEESUMMITBUILDING#1#3	