

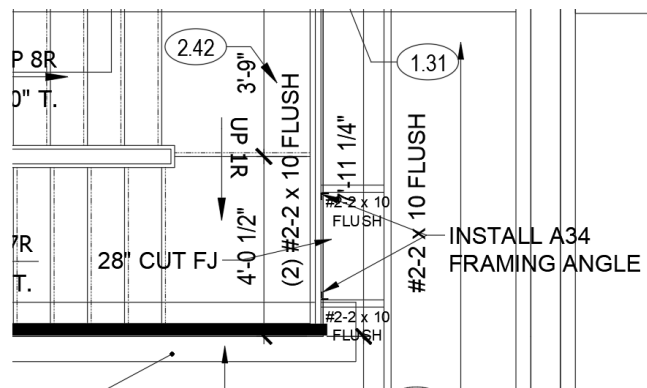
March 1, 2022

Summit Homes
120 SE 30th St.
Lee's Summit, MO 64082

RE: Field Issue of non-continuous floor joist and girder truss bearing for Lot # 159 Hawthorne Ridge – 3104 SW Arboridge Dr. Lee's Summit, Mo 64082 – Permit # PRRES20212709

Non-continuous floor joist in Unfinished Mechanical area.

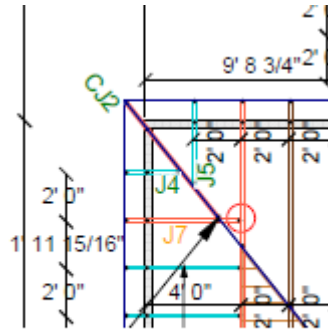
- Floor joists are Douglas Fir Larch #2 2x10 @ 16" oc and span approximately 15'-7" and have standard dead=15 psf and live = 40 psf
- Floor joist has been spliced to allow access for plumbing lines, creating a non-continuous floor joist.
- The spacing between continuous floor joists is approximately 18" OC omitting spliced floor joist.
- Install a Simpson A34 framing angle per manufacturer's specs as shown in image below:**



Model No.	Type of Connection	Fasteners (in.)	Direction of Load	DF/SP Allowable Loads			SPF/HF Allowable Loads			Code Ref.
				Floor (100)	Roof (125)	(160)	Floor (100)	Roof (125)	(160)	
SS A34	1	(8) 0.131 x 1 1/2	F ₁	395	480	545	340	415	480	IBC, FL, LA
			F ₂	395	430	430	340	370	370	
		(8) #9 x 1 1/2" SD	F ₁	640	640	640	550	550	550	
			F ₂	495	495	495	425	425	425	
			Uplift	240	240	240	170	170	170	—
			A _c	295	350	350	255	300	300	

Support for GT Bearing at SW corner of garage.

- Girder truss J7 max gravity reaction is 268 #.
 - **Girder truss J7 shall be supported by Douglas Fir Larch #2 2x4 stud wall @ 16" oc.**



Sincerely,

Bradley Huxol, PE

