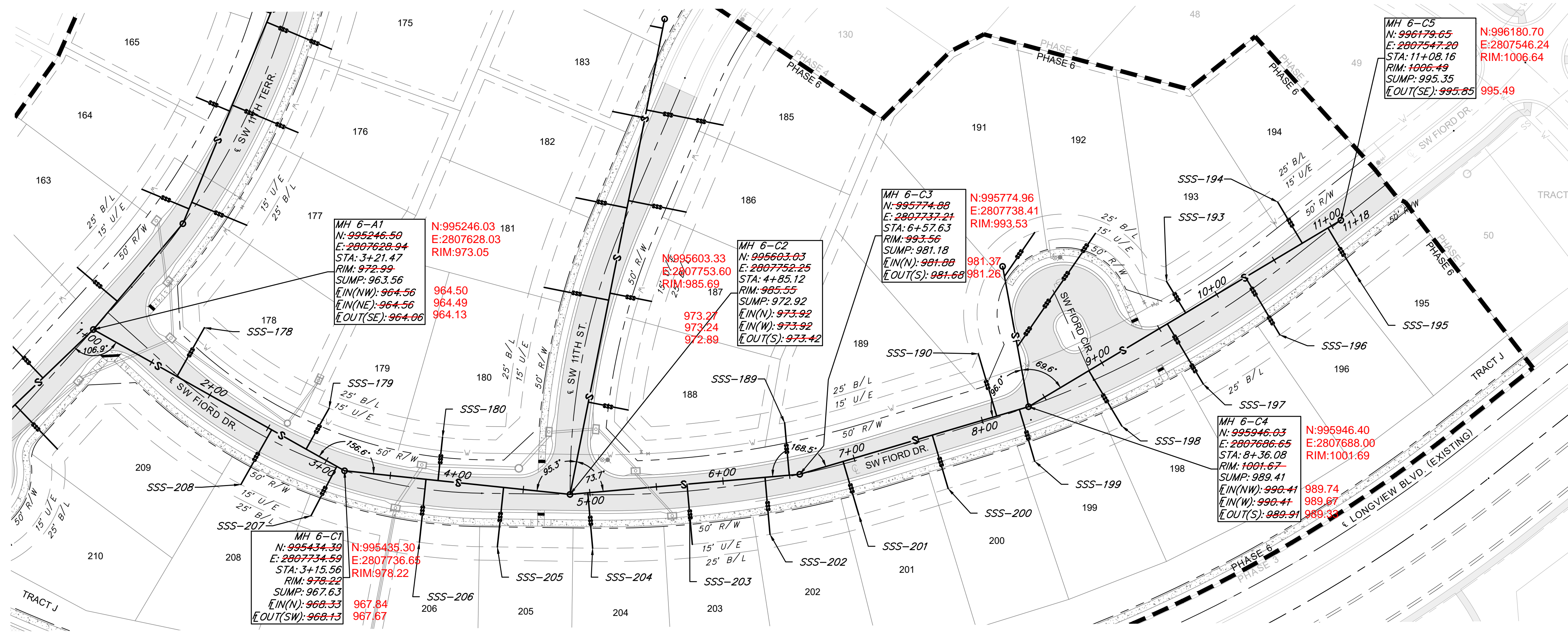


Feb 11, 2021 - 2:56pm Plotted By: gac
 G:\Shared drives\VC10 - Land Development\Projects\2020\20K10058 Highland Meadows - 6th Plat\01 CIVIL\03-DWG\Sheet\SANITARY SEWER 6C PLAN & PROFILE - SHIT - SANITARY SEWER 6C PLAN & PROFILE.dwg Layout: SANITARY SEWER 6C PLAN & PROFILE

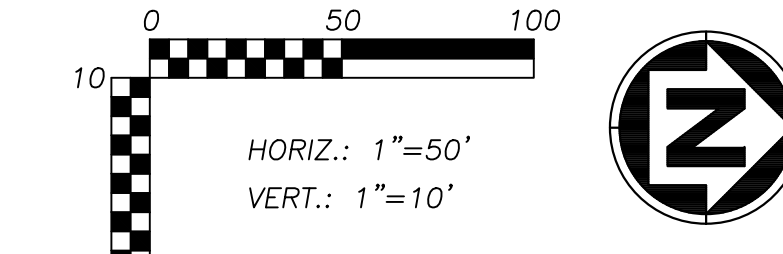


MANHOLE STRUCTURE NOTE:

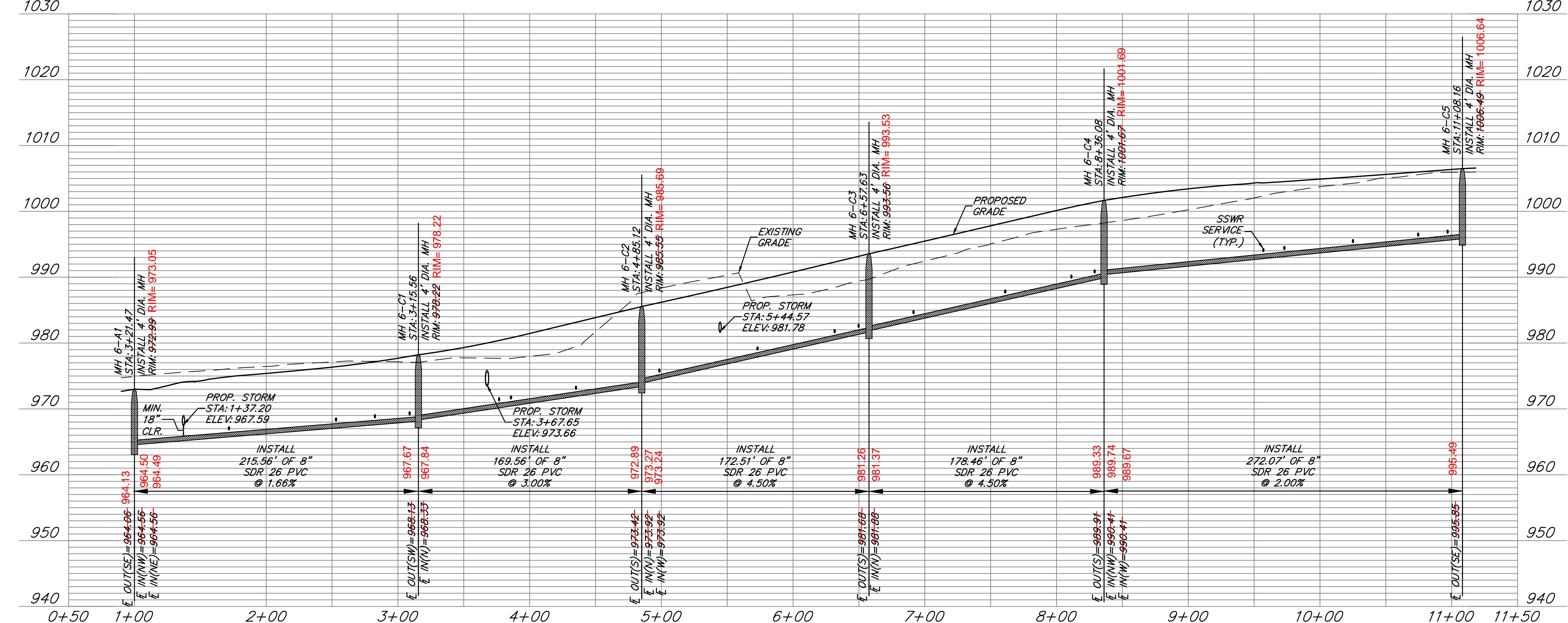
1. PROPOSED MANHOLES SHALL CONFORM TO THE CITY OF LEE'S SUMMIT STANDARD DETAIL.

GENERAL NOTES:

- ALL WORK IN PUBLIC EASEMENTS AND RIGHT-OF-WAY AND ALL EROSION CONTROL WORK MUST COMPLY WITH THE LATEST EDITION OF THE TECHNICAL PROVISIONS & STANDARD DRAWINGS FOR ROADS AND SEWERS, OF LEE'S SUMMIT, MISSOURI.
- WATER MAINS AND SANITARY SEWER MAINS/STRUCTURES SHALL HAVE AT LEAST 10' OF HORIZONTAL SEPARATION FROM EDGE OF WATER PIPE TO EDGE OF SEWER PIPE OR SEWER STRUCTURE.
- WATER MAINS AND SANITARY SEWERS SHALL HAVE AT LEAST 18" OF VERTICAL SEPARATION FROM EDGE OF PIPE TO EDGE OF PIPE. THE CROSSING SHALL BE ARRANGED SO THAT THE SEWER JOINTS WILL BE EQUIDISTANT AND AS FAR AS POSSIBLE FORM THE WATER MAIN JOINTS.
- ALL SANITARY SEWER LATERALS SHALL HAVE A TRENCH CHECK, CONSISTING OF FLOWABLE BACKFILL INSTALLED DURING CONSTRUCTION. TRENCH CHECK SHALL EXTEND TO BOTTOM OF TRENCH, TO WIDTH OF TRENCH TO 12 INCHES ABOVE PIPE, FOR A MINIMUM LENGTH OF 12 INCHES. TRENCH CHECK SHALL BE LOCATED AT LEAST 5 FEET FROM SANITARY SEWER MAIN.
- ALL SANITARY SEWER LATERALS SHALL BE 4" PVC AND MAINTAIN A MINIMUM 2.0% SLOPE. REFER TO SANITARY SEWER DETAILS SHEET FOR BUILDING CONNECTION AND RISER DETAILS.



SANITARY SEWER 6C



SANITARY SEWER SERVICE				
PIPE NAME	STATION	LENGTH	SLOPE	MSFE
SSS-202	6+31.56	43'	2.00%	982.50+(3.5')
SSS-203	5+72.98	45'	2.00%	979.91+(3.5')
SSS-204	4+98.48	42'	2.00%	976.49+(3.5')
SSS-205	4+35.16	45'	2.00%	973.95+(3.5')
SSS-206	3+76.82	47'	2.00%	972.25+(3.5')
SSS-178	1+71.73	42'	2.00%	967.72+(3.5')
SSS-179	2+82.56	35'	2.00%	969.42+(3.5')
SSS-189	6+49.75	39'	2.00%	983.25+(3.5')
SSS-190	8+11.25	49'	2.00%	990.90+(3.5')
SSS-193	9+72.97	28'	2.00%	994.83+(3.5')
SSS-194	10+74.56	36'	2.00%	997.03+(3.5')
SSS-195	10+96.89	42'	2.00%	997.60+(3.5')
SSS-180	3+85.84	33'	2.00%	972.22+(3.5')
SSS-196	10+25.02	50'	2.00%	996.33+(3.5')
SSS-197	9+56.99	52'	2.00%	995.01+(3.5')
SSS-198	8+91.89	44'	2.00%	993.90+(3.5')
SSS-199	8+28.94	40'	2.00%	991.53+(3.5')
SSS-200	7+61.05	42'	2.00%	988.50+(3.5')
SSS-201	6+91.43	42'	2.00%	985.37+(3.5')
SSS-207	3+08.89	42'	2.00%	969.99+(3.5')
SSS-208	2+53.01	47'	2.00%	969.17+(3.5')

RELEASE FOR CONSTRUCTION
 AS NOTED ON PLANS REVIEW
 DEVELOPMENT SERVICES
 LEE'S SUMMIT, MISSOURI
 04/16/2021

AS-BUILT
 DATE 01/28/2022

ANDERSON ENGINEERING
 EMPLOYEE OWNED

ENGINEERS • SURVEYORS • LABORATORIES • DRILLING
 941 W. 141ST TER • KANSAS CITY, MISSOURI 64145 • PHONE (816) 777-9400
 A LICENSED MISSOURI ENGINEERING & SURVEYING CORPORATION - LC 12

DRAWING INFO.	
NO.	DESCRIPTION
1	REVISED PER CITY COMMENT

BY	DATE	CHECK BY	LICENSE NO.	DATE	ISSUED FOR	JOB NUMBER	M/D COA NO.
GC	2/11/21	ZM	PE-2012009232	1/7/2021	FOR REVIEW	20K10058	00062

© COPYRIGHT ANDERSON ENGINEERING, INC. 2020

SUMMIT HOMES KC
 HIGHLAND MEADOWS - 6TH PLAT

SANITARY SEWER 6C PLAN & PROFILE

SHEET NUMBER
C103
 4 OF 6

S10, T47N, R22W
 LEE'S SUMMIT, JACKSON COUNTY, MISSOURI