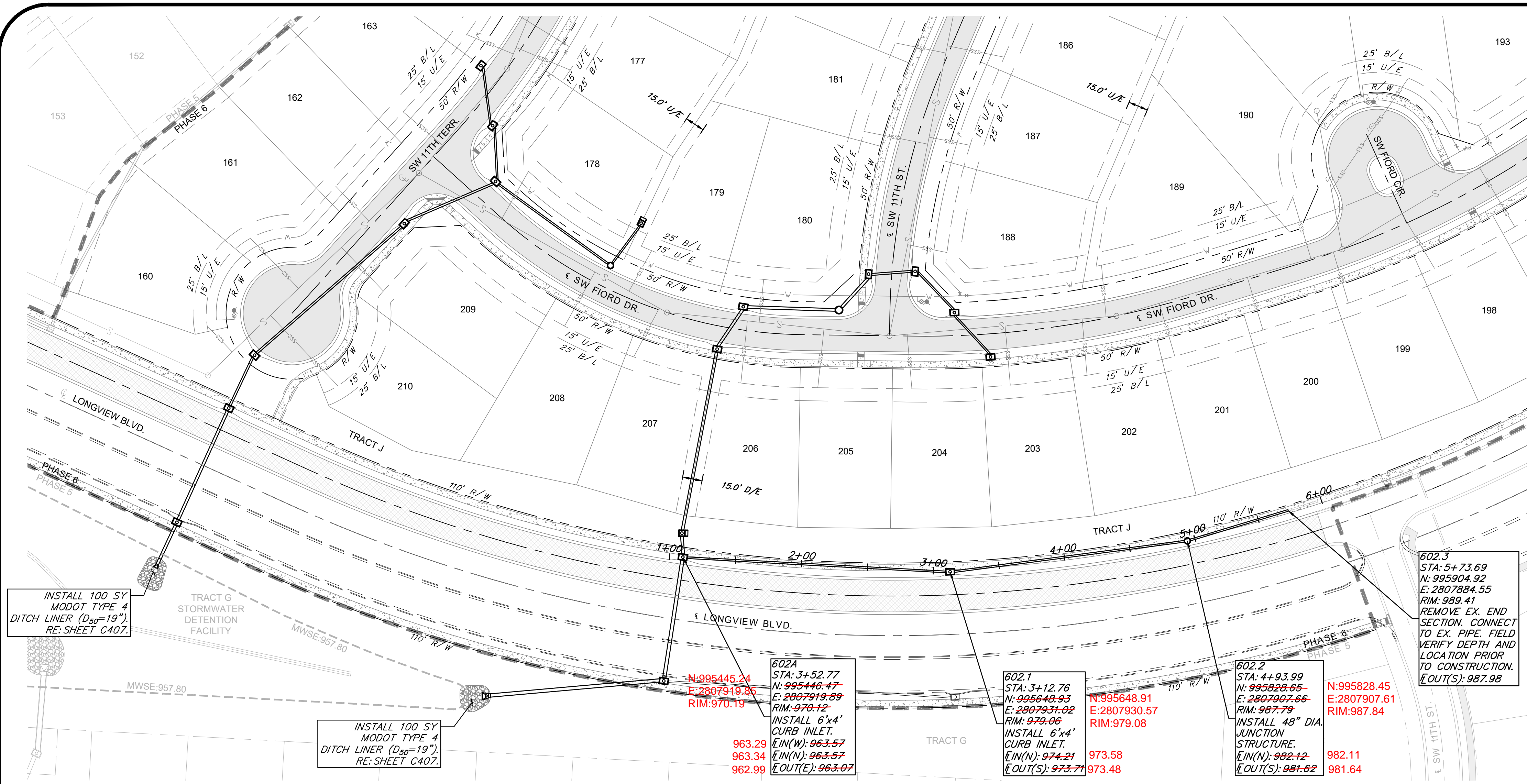


Feb 11, 2021 - 6:08pm Plotted By: gacite G:\Shared drives\VC10 - Land Development\Projects\2020\20K10058 Highland Meadows - 6th Plat\01 CIVIL\03-DWG\Sheet\STREET AND STORM\SEWER 602.1 SERIES PLAN & PROFILE Layout: STORM SEWER 602.1 SERIES PLAN & PROFILE



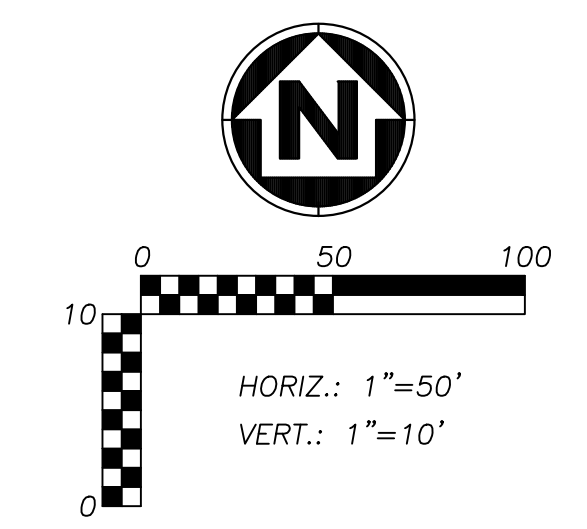
LEGEND

RIP RAP

FILL PRIOR TO PIPE INSTALLATION

- STORM PIPE AND STRUCTURES:**
- HDPE PIPE SHALL CONFORM TO ASTM F2306. JOINTS SHALL BE INTEGRAL BELL AND SPIGOT WITH RUBBER GASKETS. JOINTS SHALL BE WATER TIGHT AS DEFINED BY ASTM F2306.
 - CONCRETE PIPE SHALL CONFORM TO ASTM C76, CLASS III, WALL TYPE B. JOINTS SHALL BE TONGUE-IN-GROOVE WITH PREFORMED, FLEXIBLE SEALANTS AND SHALL CONFORM TO ASTM C990.
 - PROPOSED CURB INLETS AND JUNCTION BOXES SHALL CONFORM TO THE CITY OF LEE'S SUMMIT STANDARD DETAILS.

- GENERAL NOTES:**
- COORDINATES AT TOP ELEVATIONS SHOWN ARE LOCATED AT CENTER OF STRUCTURES, ROAD OFFSETS ARE AT INSIDE FACE OF CURB INLETS, AND AT CENTER OF MANHOLES AND JUNCTIONS BOXES.
 - PIPE LENGTHS INDICATED ARE FROM CENTER OF STRUCTURE TO CENTER OF STRUCTURE.
 - INSIDE FRONT FACE OF CURB INLETS SHALL BE LOCATED 1.5 FEET BEHIND BACK OF CURB. STRUCTURE SHALL BE PARALLEL WITH CURB ALIGNMENT.
 - TOP ELEVATION OF CURB INLETS SHALL BE SLOPED TO CONFORM TO GRADE OF STREET.
 - WATER MAINS AND STORM SEWERS SHALL HAVE AT LEAST 3' OF CLEAR HORIZONTAL SEPARATION.
 - CONTROLLED FILL: PRIOR TO INSTALLATION OF STORM SEWER PIPING IN FILL AREAS, FILL SHALL BE PLACED AND COMPACTED TO A MINIMUM 95% OF STANDARD PROCTOR DENSITY PER ASTM D 698 TO A MINIMUM DEPTH OF 2 FEET ABOVE THE TOP OF PIPE.



INSTALL 100 SY MODOT TYPE 4 DITCH LINER (D₅₀=19"). RE: SHEET C407.

TRACT G STORMWATER DETENTION FACILITY

INSTALL 100 SY MODOT TYPE 4 DITCH LINER (D₅₀=19"). RE: SHEET C407.

N:995445.24
E:2807919.86
RIM:970.19

602A
STA: 3+52.77
N:995446.47
E:2807919.89
RIM:970.12

INSTALL 6"x4' CURB INLET.

EIN(W): 963.57
EIN(N): 963.57
EOUT(E): 963.07

963.29
963.34
962.99

602.1
STA: 3+12.76
N:995648.93
E:2807931.02
RIM:979.06

INSTALL 6"x4' CURB INLET.

EIN(N): 974.21
EOUT(S): 973.71

973.58
973.48

602.2
STA: 4+93.99
N:995828.65
E:2807907.66
RIM:987.79

INSTALL 48" DIA. JUNCTION STRUCTURE.

EIN(N): 982.12
EOUT(S): 981.62

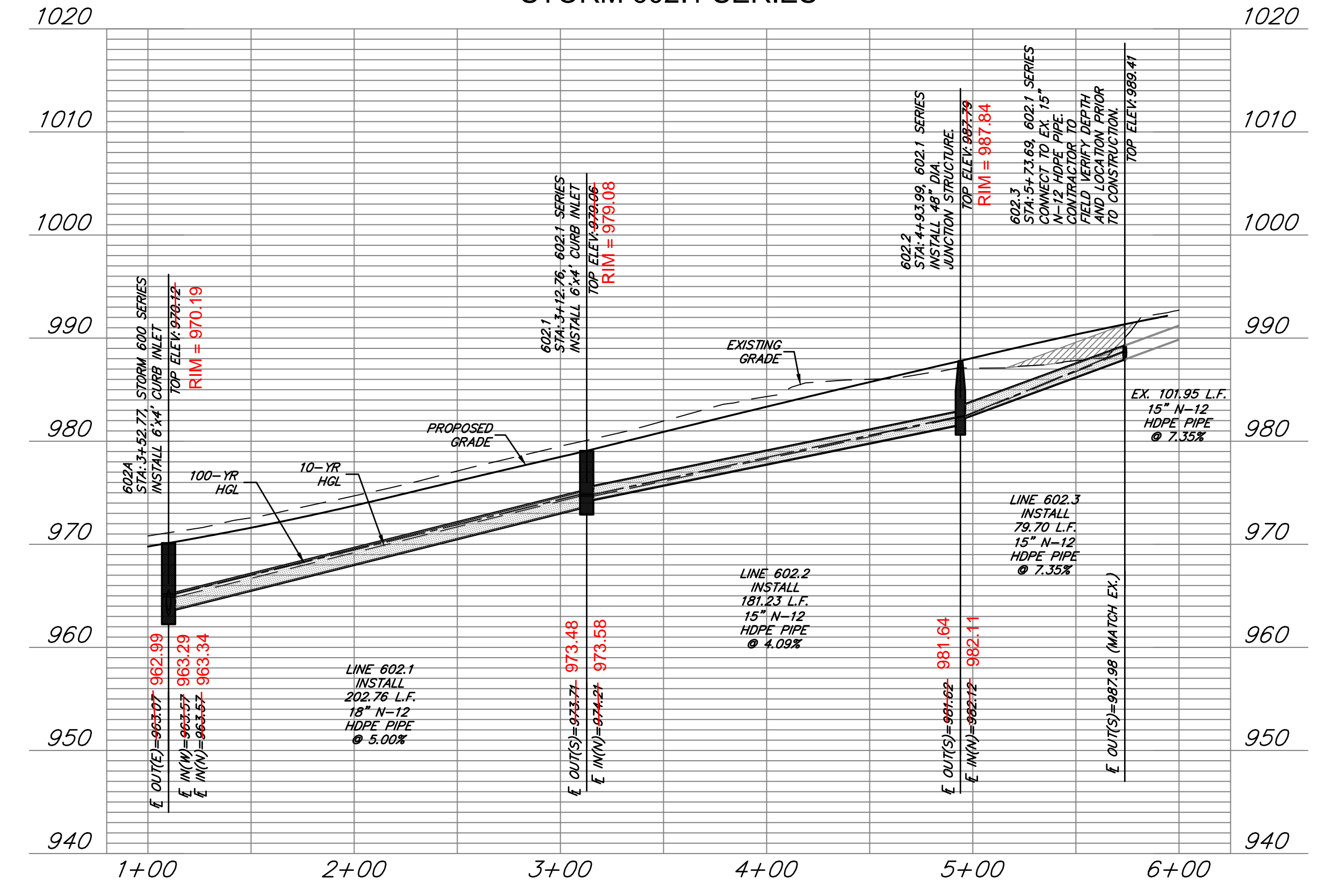
982.11
981.64

602.3
STA: 5+73.69
N:995904.92
E:2807884.55
RIM:989.41

REMOVE EX. END SECTION. CONNECT TO EX. PIPE. FIELD VERIFY DEPTH AND LOCATION PRIOR TO CONSTRUCTION.

EOUT(S): 987.98

STORM 602.1 SERIES



AS-BUILT
DATE 01/28/2022

RELEASE FOR
CONSTRUCTION
AS NOTED ON PLANS REVIEW
DEVELOPMENT SERVICES
LEE'S SUMMIT, MISSOURI
04/16/2021

DRAWING INFO.	
NO.	DESCRIPTION
1	REVISED PER CITY COMMENT

BY	DATE	DRAWN BY:	GC

CHECK BY:	ZM	LICENSE NO.:	PE-2012009232

DATE:	1/7/2021	FOR REVIEW

ISSUED FOR:	20K10058	JOB NUMBER:	000062

M/D CO. NO.	000062

ANDERSON ENGINEERING
EMPLOYEE OWNED

ENGINEERS • SURVEYORS • LABORATORIES • DRILLING
941 W. 141ST TER • KANSAS CITY, MISSOURI 64145 • PHONE (816) 777-9400
A LICENSED MISSOURI ENGINEERING & SURVEYING CORPORATION - LC 82

SUMMIT HOMES KC
HIGHLAND MEADOWS - 6TH PLAT

**STORM SEWER 602.1 SERIES
PLAN & PROFILE**

S10, T47N, R32W
LEE'S SUMMIT, JACKSON COUNTY, MISSOURI

SHEET NUMBER
C205
20 OF 42