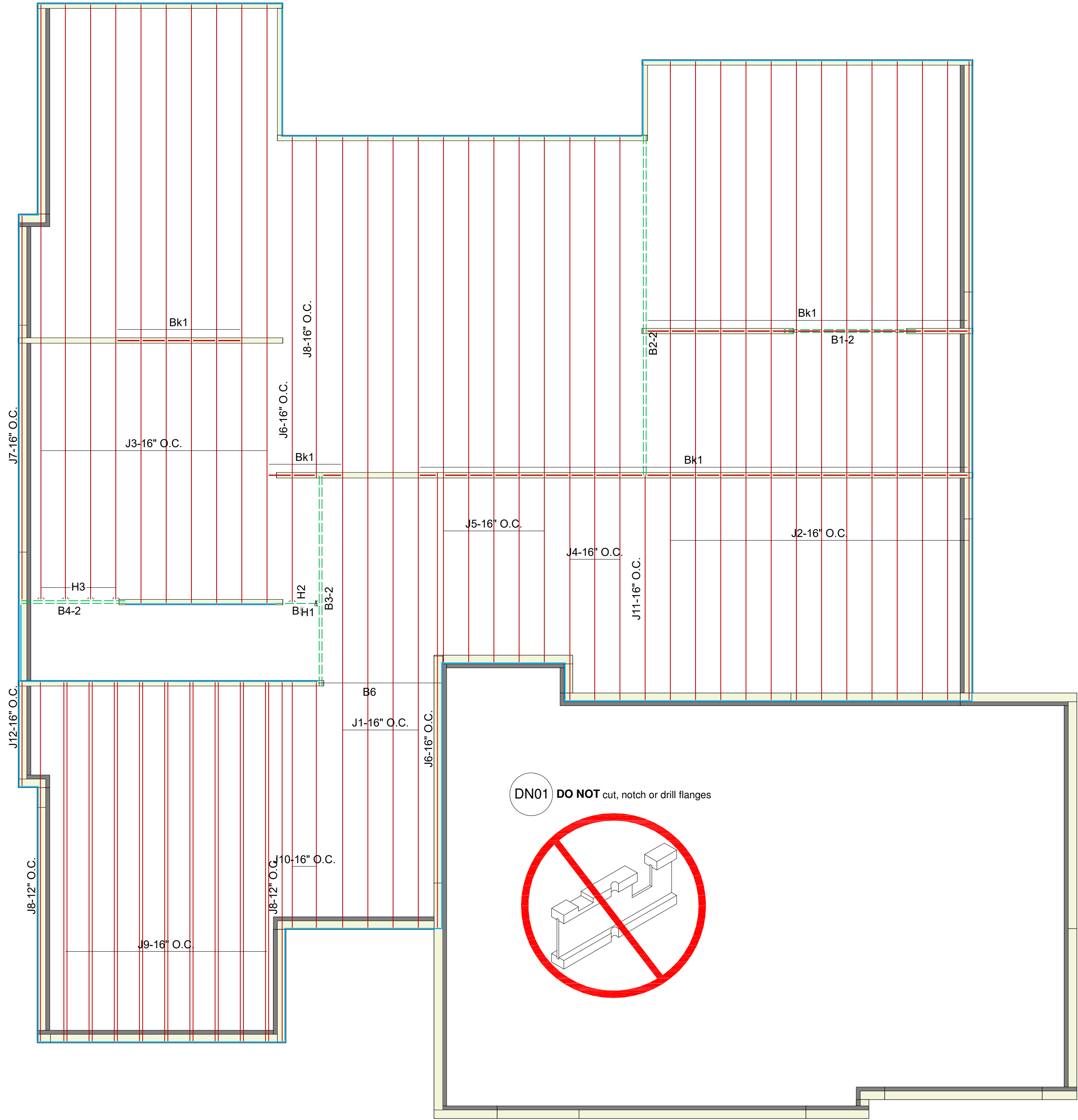
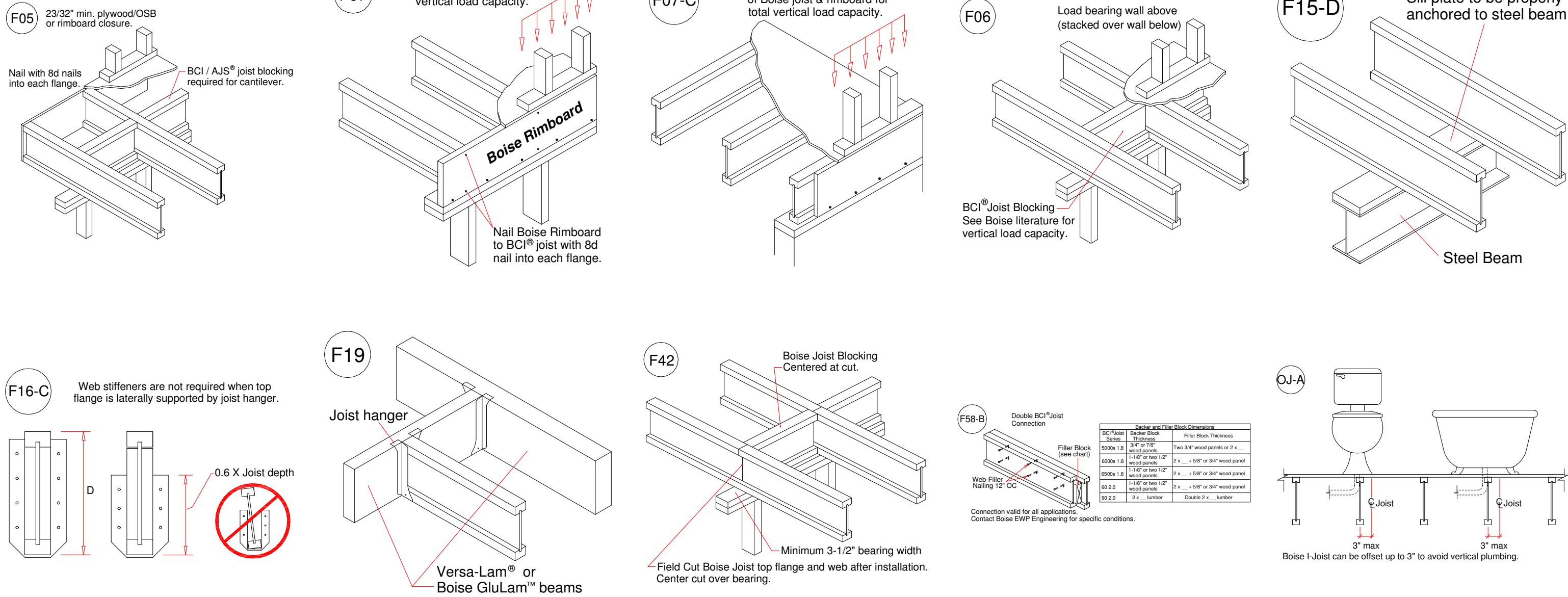


Start Framing Here →

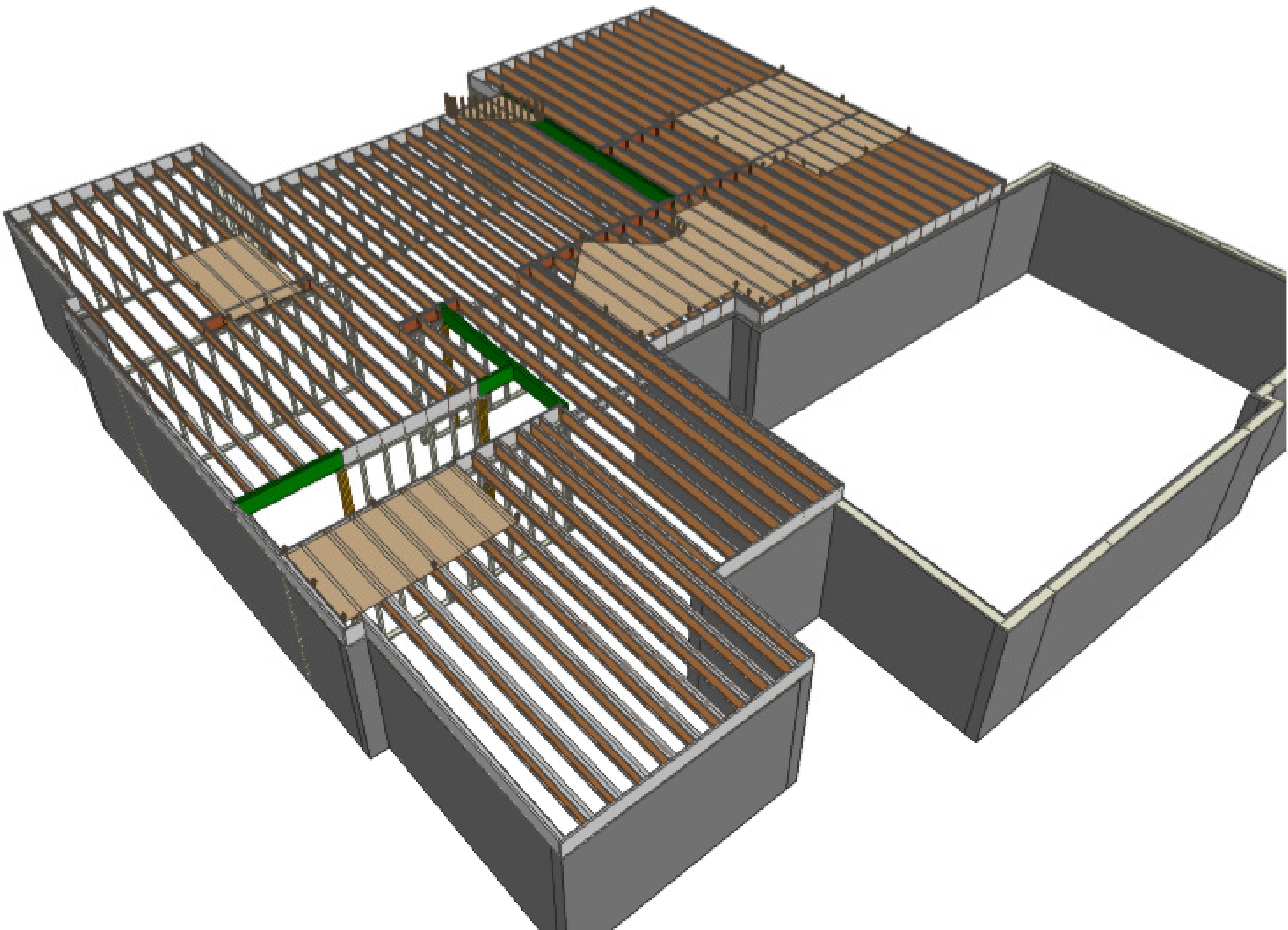


DN01 DO NOT cut, notch or drill flanges



Products				
PlotID	Net Qty	Product	Length	Plies
J1-16" O.C.	4	11-7/8" BCI® 5000s-1.8	42' 0"	1
J2-16" O.C.	13	11-7/8" BCI® 5000s-1.8	34' 0"	1
J3-16" O.C.	10	11-7/8" BCI® 5000s-1.8	32' 0"	1
J4-16" O.C.	3	11-7/8" BCI® 5000s-1.8	30' 0"	1
J5-16" O.C.	5	11-7/8" BCI® 5000s-1.8	28' 0"	1
J6-16" O.C.	2	11-7/8" BCI® 5000s-1.8	26' 0"	1
J7-16" O.C.	1	11-7/8" BCI® 5000s-1.8	22' 0"	1
J8-12" O.C.	2	11-7/8" BCI® 5000s-1.8	20' 0"	1
J8-16" O.C.	1	11-7/8" BCI® 5000s-1.8	20' 0"	1
J9-16" O.C.	18	11-7/8" BCI® 5000s-1.8	20' 0"	2
J10-16" O.C.	2	11-7/8" BCI® 5000s-1.8	14' 0"	1
J11-16" O.C.	1	11-7/8" BCI® 5000s-1.8	12' 0"	1
J12-16" O.C.	1	11-7/8" BCI® 5000s-1.8	6' 0"	1
B1-2	2	1-3/4" x 9-1/2" VERSA-LAM® 2.0 3100 SP	8' 0"	2
B2-2	2	1-3/4" x 11-7/8" VERSA-LAM® 2.0 3100 SP	18' 0"	2
B3-2	2	1-3/4" x 11-7/8" VERSA-LAM® 2.0 3100 SP	12' 0"	2
B4-2	2	1-3/4" x 11-7/8" VERSA-LAM® 2.0 3100 SP	6' 0"	2
B5	1	1-3/4" x 11-7/8" VERSA-LAM® 2.0 3100 SP	4' 0"	1
Ca1	21	1-1/8" x 11-7/8" BC RIM BOARD OSB	12' 0"	1
Bk1	43	11-7/8" BCI® 5000s-1.8	2' 0"	1

Connector Summary				
PlotID	Qty	Manuf	Product	Flange
H1	1	Simpson	HU11	None
H2	1	Simpson	ITS2.06/11.88	None
H3	4	Simpson	ITS2.06/11.88	None



Revisions:

BY:

Boise Cascade

MIDWEST LUMBER

SALES PRESENTATION DRAWING
No structural or dimensional check has been made of this design drawings of the building, therefore purchaser is to check and approve all dimensions, quantities, loads, and details carefully. This drawing has not been check by Boise Engineering.

NOTE:
ALL MEASUREMENTS
TO BE VERIFIED
IN THE FIELD.

Midwest Lumber
Capitol - Lot #317 TPR
Boise Cascade
Lee's Summit, MO

BC FRAMER

Scale: 1/4"=1'-0"

Date:

By: Don Happel

File: Capitol - Lot #317 TPR

DWG:

Sheet: 1/1