

PROJECT CONTACTS:

DMD,MSD
 C: 816.686.5991
 CONTACT: RAVI JAY RAJANNA
 EMAIL: kcortho@gmail.com

ARCHITECT
 DEV INC.
 8807 MONROVIA
 LENEXA, KS 66215
 T: 913.322.8882
 CONTACT: KEVIN CAMPBELL
 EMAIL: kevin@dev-inc.com

MEP ENGINEER
 LANKFORD FENDLER ASSOCIATES
 1730 WALNUT STREET
 KANSAS CITY, MO 64108
 T: 816.221.1411
 CONTACT: ALEX MALYAROV
 EMAIL: alexm@lankfordfendler.com

DRAWING INDEX:

- ARCHITECTURAL
 - A0.0 CODE PLAN
 - A0.1 DOOR SCHEDULE
 - A1.0 DEMOLITION PLAN
 - A1.1 FLOOR PLAN
 - A2.0 ELEVATIONS
- MECHANICAL, PLUMBING & ELECTRICAL
 - MEP1.0 SPECIFICATIONS
 - MEP1.1 SPECIFICATIONS
 - MEP1.2 SPECIFICATIONS
- M1.0 FLOOR PLAN-MECHANICAL
- M2.0 MECHANICAL DETAILS
- P1.0 FLOOR PLAN-PLUMBING
- P2.0 PLUMBING DETAILS
- P2.1 PLUMBING SCHEDULES, NOTES AND SYMBOLS
- E1.0 FLOOR PLAN-POWER
- E2.0 FLOOR PLAN-LIGHTING
- E3.0 ELECTRICAL DETAILS
- E3.1 ELECTRICAL SCHEDULES, GENERAL NOTES & SYMBOLS

APPLICABLE CODES:
 2018 INTERNATIONAL BUILDING CODE
 2018 INTERNATIONAL PLUMBING CODE
 2018 INTERNATIONAL MECHANICAL CODE
 2018 INTERNATIONAL FUEL GAS CODE
 2018 INTERNATIONAL FIRE CODE
 2017 NATIONAL ELECTRIC CODE
 ICC/ANSI A117.1-2009, ACCESSIBLE AND USABLE BUILDINGS FACILITIES

TENANT USE GROUP: B - BUSINESS

CONSTRUCTION TYPE: TYPE V-B, UNPROTECTED, NON-SPRINKLED

CODE AREA: 2,414 SF

OCCUPANT LOAD: 54 PEOPLE

WAITING AREA:	496 SF/15	=33
GENERAL OFFICE:	1791 SF/150	=12
BREAK AREA:	127 SF/15	=9

EXITS REQUIRED: 2 PER SECTION 1006.2.1

EXITS SEPARATION REQUIRED: > 1/3 MAX DIAGONAL = 24'-0"

EXIT WIDTH REQUIRED: 32" FOR EACH DOOR PER 1010.1.1

TRAVEL DISTANCE: 300' PER TABLE 1017.2

PLUMBING FIXTURES:

TOILET REQ'D: 1 WOMEN / 1 MEN

TOILET PROVIDED: 2 WOMEN / 1 MEN

SINK REQ'D: 1 WOMEN / 1 MEN

SINK PROVIDED: 2 WOMEN / 1 MEN

DRINKING FOUNTAIN REQ'D: 0

DRINKING FOUNTAIN PROVIDED: BOTTLED WATER @ BREAK ROOM

SERVICE SINK REQ'D: 1

SERVICE SINK PROVIDED: 1 PROVIDED

ACTIVE FIRE SAFETY FEATURES:

EXIT SIGNS: BATTERY BACK-UP POWERED

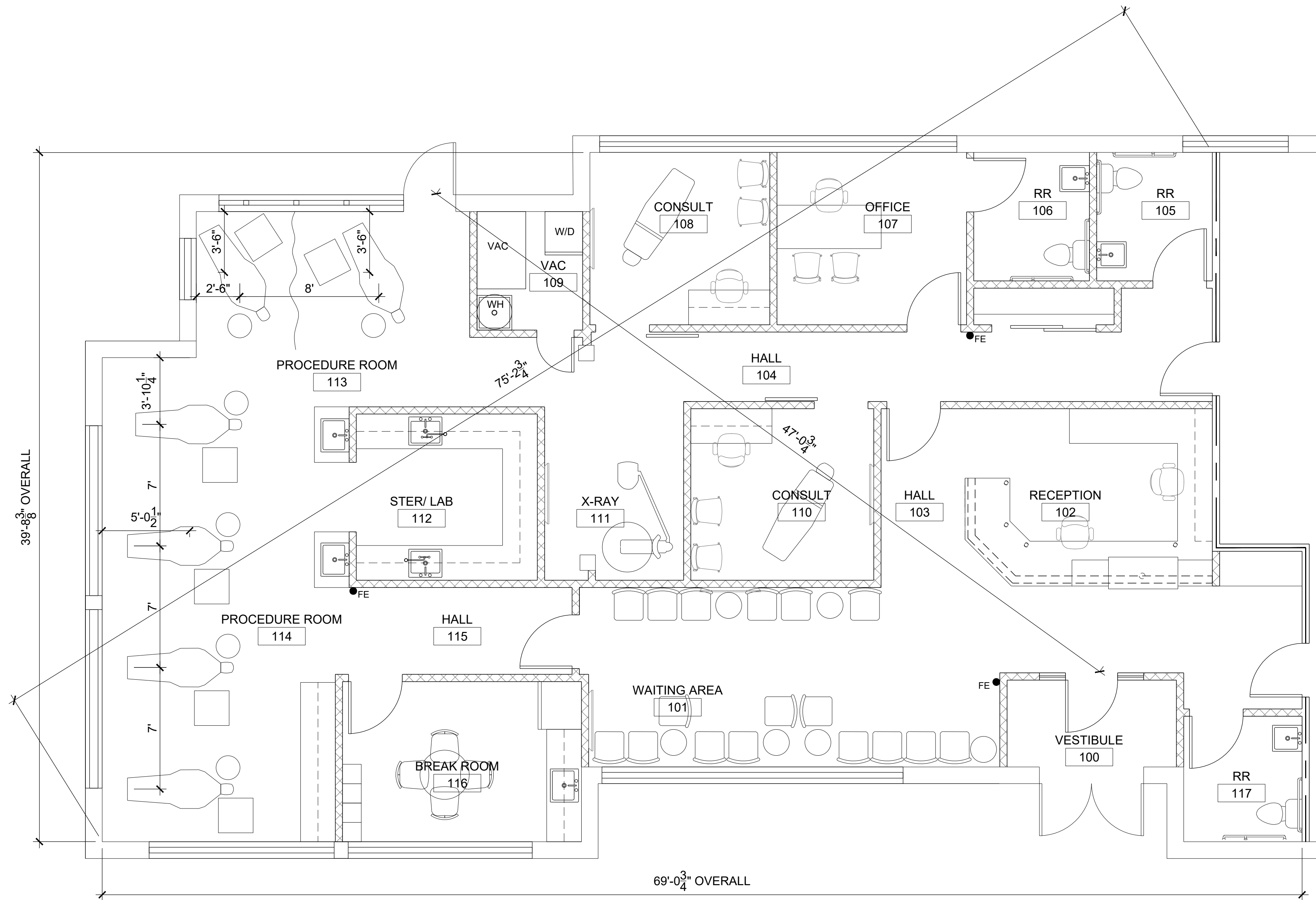
EMERGENCY LIGHTS: BATTERY BACK-UP POWERED

FIRE EXTINGUISHERS: PROVIDE PER NFPA 10

FIRE ALARM: NOTIFICATION / ALARM SYSTEM PROVIDED
 MANUAL PULLS NOT REQUIRED

● FE TYPE 2A-10B, FIRE EXTINGUISHER
 INSTALL AT 4'-0" A.F.F. TO THE HANDLE.
 COORDINATE FINAL LOCATIONS WITH
 TENANT & FIRE MARSHAL.

3 CODE DATA



2 CODE PLAN
 SCALE: 1/4" = 1'-0" NORTH



1 VACINITY MAP
 NOT TO SCALE NORTH



Dev Anand
 President & CEO

Kevin Campbell
 Senior Architect

8807 Monrovia Street
 Lenexa, Kansas 66215

Phone: 913.322.8892
 Fax: 913.322.8886
 Email: kevin@dev-inc.com

THIS DRAWING has been prepared by the Architect, or prepared under his direct supervision as an instrument of service and is intended for use only on this project. All Drawings, Specifications, ideas and designs, including the overall layout, form, arrangement, and composition of spaces and elements portrayed, constitute the original, unpublished work of the Architect. Any reproduction, use, or disclosure of the information contained herein without the written consent of the Architect is strictly prohibited.

COMPLY WITH all laws, codes, ordinances and regulations with authorities having jurisdiction and with requirements of the Landlord, if applicable. Do not start work until all permits and required approvals are obtained.



A TENANT FINISH FOR:
LAKWOOD ORTHODONTICS
 1399 NE DOUGLAS ST
 LEE'S SUMMIT, MO 64086



PROJECT NO. 210407
DRAWING ISSUANCE
 08/13/2021 BUILDING PERMIT
 01/18/2022 REV 04

SHEET NUMBER
A0.0
 CODE PLAN



Dev Anand
President & CEO

Kevin Campbell
Senior Architect

8807 Monrovia Street
Lenexa, Kansas 66215

Phone: 913.322.8892
Fax: 913.322.8886
Email: kevin@dev-inc.com

THIS DRAWING has been prepared by the Architect, or prepared under his direct supervision as an instrument of service and is intended for use only on this project. All Drawings, Specifications, ideas and designs, including the overall layout, form, arrangement, and composition of spaces and elements portrayed, constitute the original, unpublished work of the Architect. Any reproduction, use, or disclosure of the information contained herein without the written consent of the Architect is strictly prohibited.

COMPLY WITH all laws, codes, ordinances and regulations with authorities having jurisdiction and with requirements of the Landlord, if applicable. Do not start work until all permits and required approvals are obtained.



LAKWOOD ORTHODONTICS

A TENANT FINISH FOR:

1399 NE DOUGLAS ST
LEE'S SUMMIT, MO 64086



01/19/2022

PROJECT NO. 210407

DRAWING ISSUANCE

08/13/2021 BUILDING PERMIT REV 04
01/19/2022

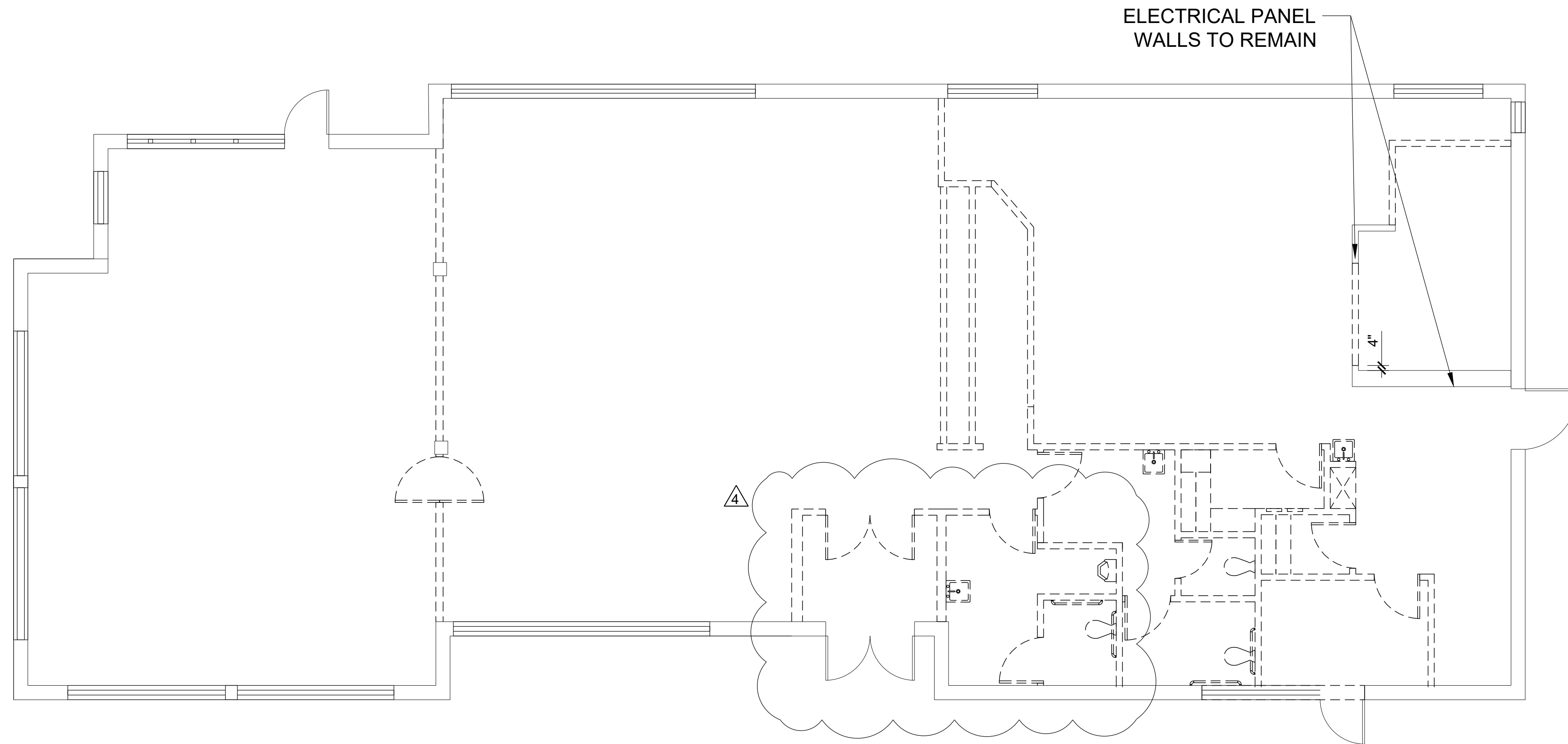
SHEET NUMBER

A1.0

DEMO PLAN

DEMO SCOPE OF WORK:

1. REMOVE ALL WALLS/DOORS/CASEWORK/PLUMBING SHOWN DASHED.
2. REMOVE GYP BOARD SHEATHING ON PERIMETER WALLS AND INTERIOR WALLS TO REMAIN.
3. REMOVE FLOORING & BASE THROUGHOUT.
4. REMOVE CEILING, LIGHT FIXTURES AND MECHANICAL REGISTERS THROUGHOUT.
5. REMOVE ALL ELECTRICAL DEVICES, WIRING AND CONDUIT BACK TO ELECTRICAL PANEL.
6. REMOVE ALL PLUMBING FIXTURES AND CAP PIPING AT FLOOR.
7. REMOVE HVAC DUCT WORK BACK TO TRUNK LINE. EXISTING HVAC UNITS SHALL REMAIN.
8. REMOVE ALL RESTAURANT RELATED MECHANICAL EQUIPMENT WITHIN SPACE AND ON THE ROOF. PROPERLY COVER ANY RESULTING ROOF OPENINGS FOR ROOF PATCH BY OTHERS.



1 DEMOLITION PLAN
SCALE: 3/16" = 1'-0"

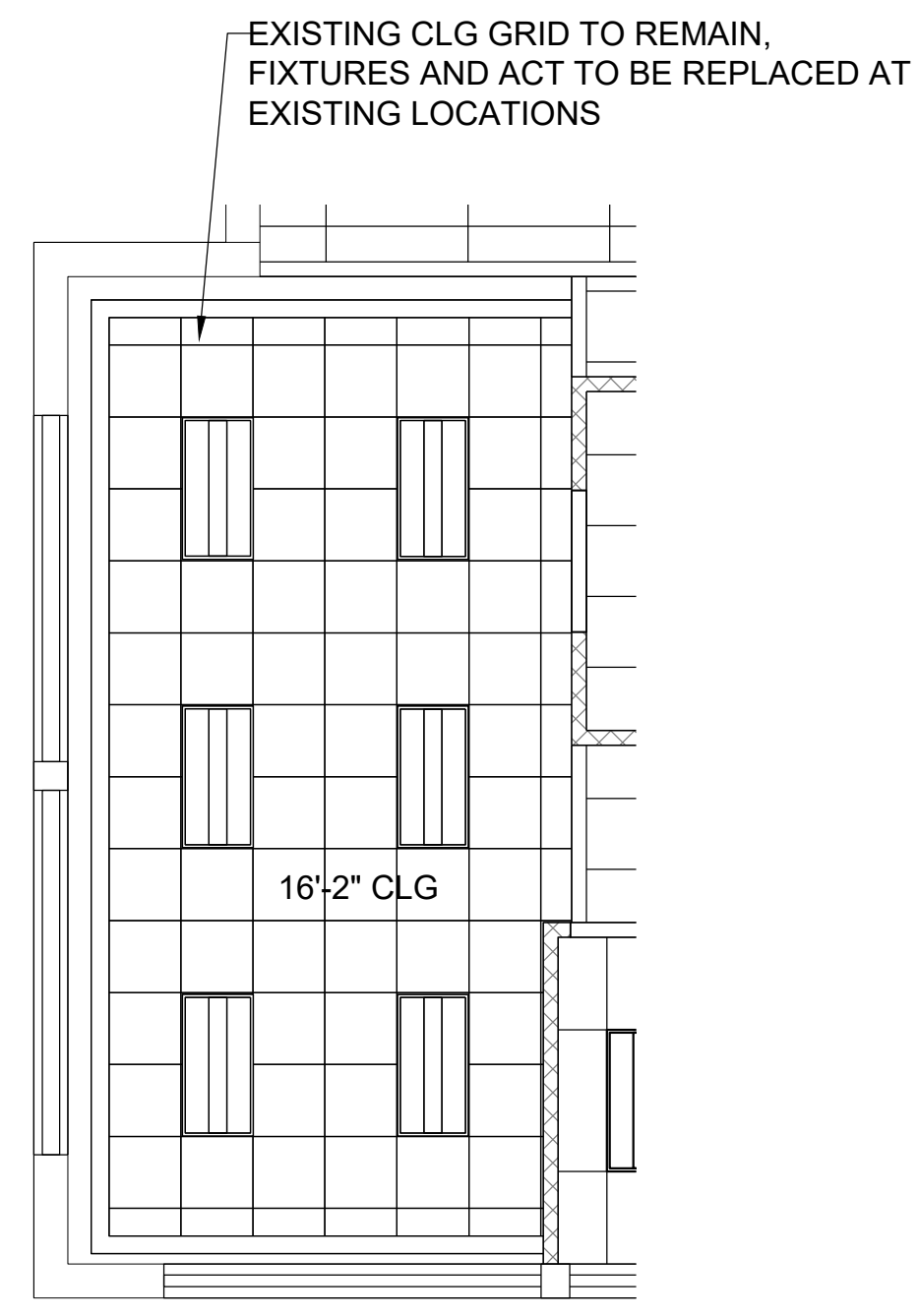
FINISH SCHEDULE

#	PRODUCT	MANUFACTURE	COLOR	MODEL/ PATTERN
CP-1	CARPET TILE	TARKETT	SHADOW GRIS	GEOKNIT
LVT-1	LVT	TARKETT	BLANCHED PINE PLWD	5134, 6" X 48"
WB-1	RUBBER WALL BASE	ROPPE	170 WHITE	4" H BASE
TL-1	RR FLOOR CERAMIC TILE	MSI	CONCRETO GRIGIO	NCONGRI2424, 24" X 24" MATTE
TL-2	RR WALL TILE	TBD	TBD	TBD
TL-3	BREAKROOM-BACKSPLASH	TBD	TBD	TBD
TL-4	RECEPTION FACADE	MSI	BALBOA AMBER	6X24 MATTE
ACT-1	CEILING TILE	USG RADAR	WHITE	2'X4' FLAT SQUARE EDGE
PT-1	PAINT	SHERWIN WILLIAMS	SW 7103-WHITETAIL	SW 7103, FINISH: EGGSHELL
PL-1	PLASTIC LAMINATE	FORMICA	7223C-AN	NEW WHITE
PL-2	PLASTIC LAMINATE	FORMICA	5887-NT	NATURELLE FINISH
PL-3	PLASTIC LAMINATE	FORMICA	9510-34	SCOVATO FINISH
SS-1	QUARTZ COUNTERTOP	METRO QUARTZ	M5016	TRUE WHITE
SS-2	QUARTZ FACADE	MSI	GRAY MIST GRANITE	-

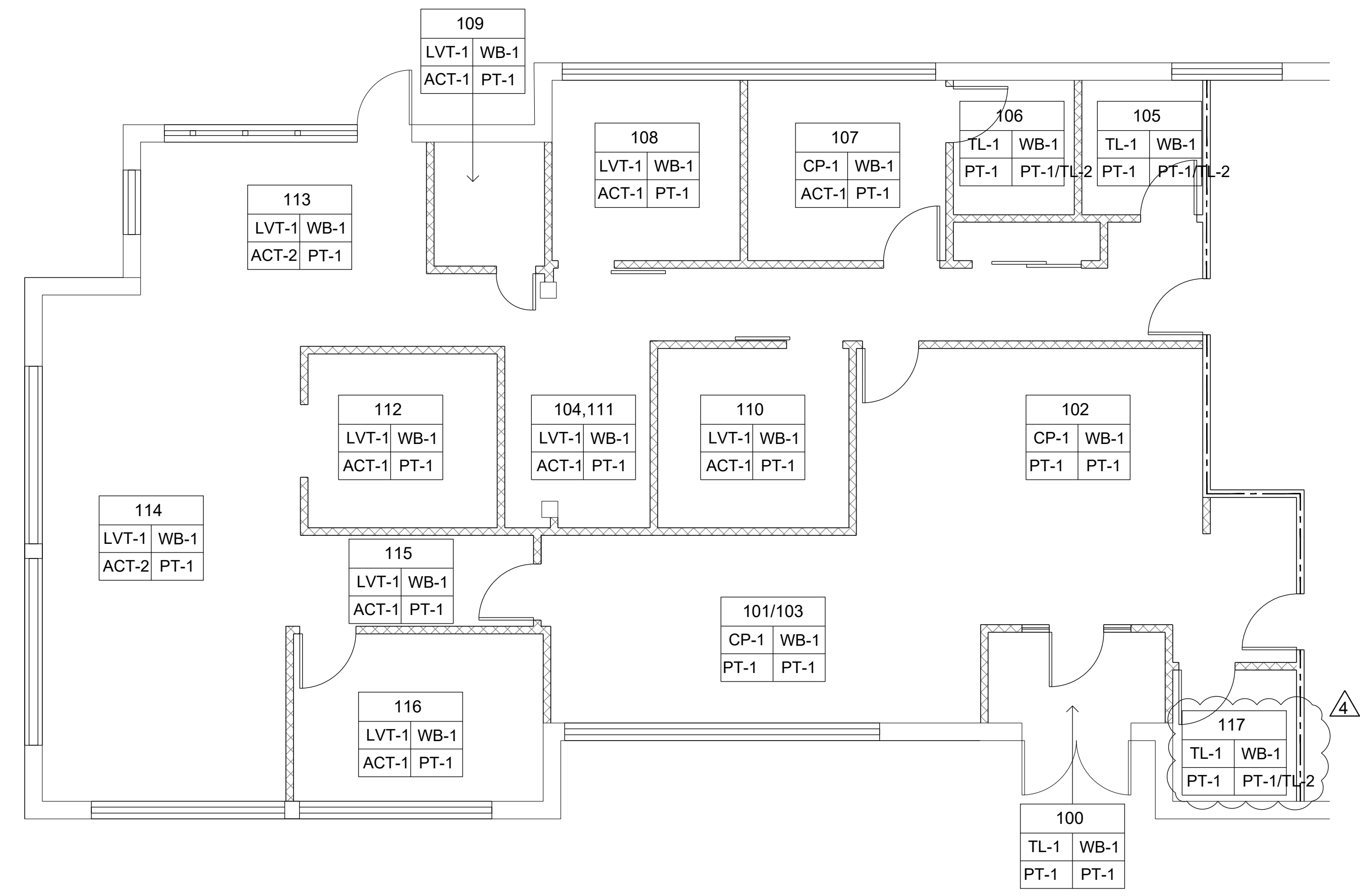
FINISH KEY

FLOOR FINISH	ROOM #	WALL BASE
---	---	---
---	---	---

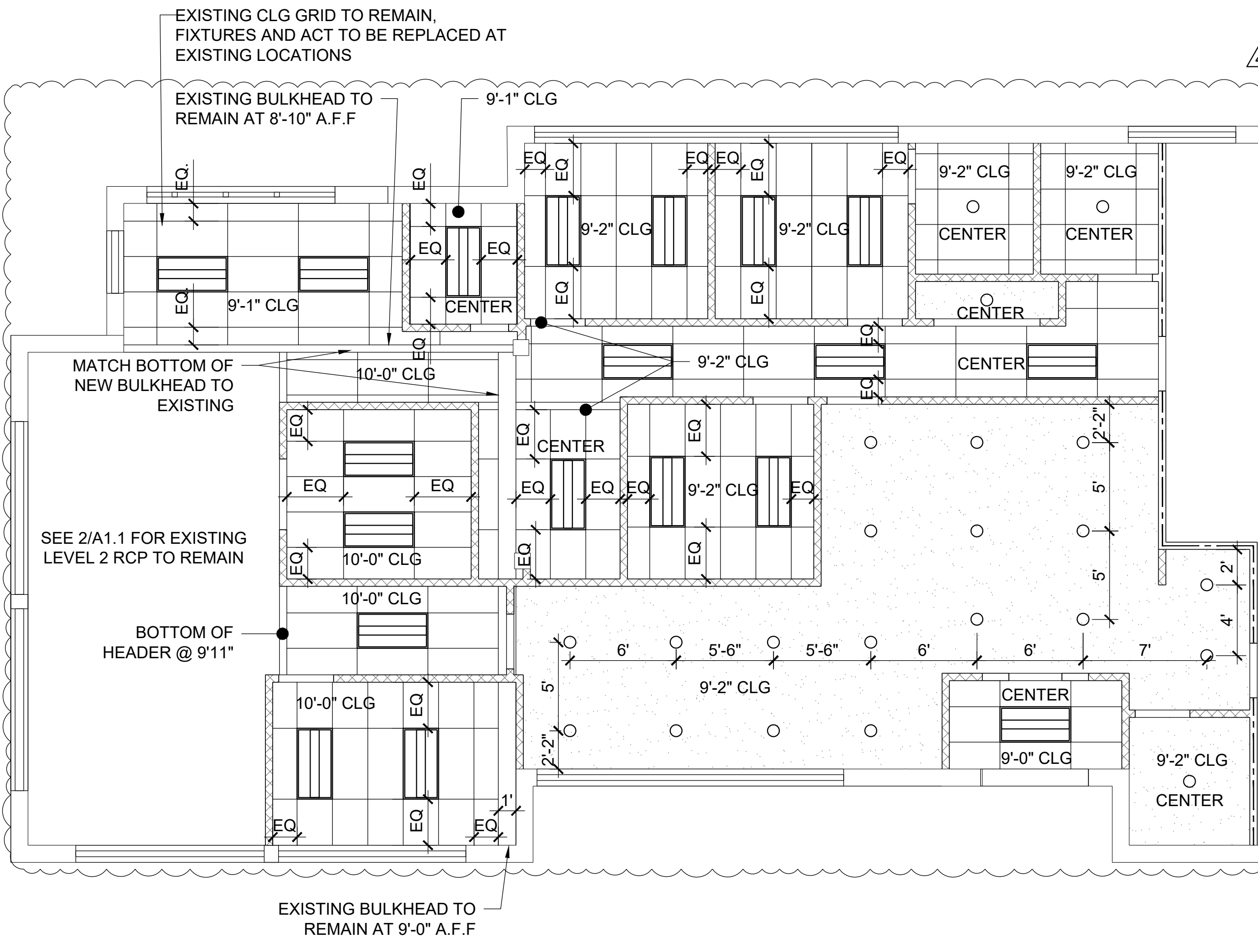
CEILING FINISH WALL FINISH



4 LEVEL 2 RCP
SCALE: 3/16" = 1'-0"
NORTH

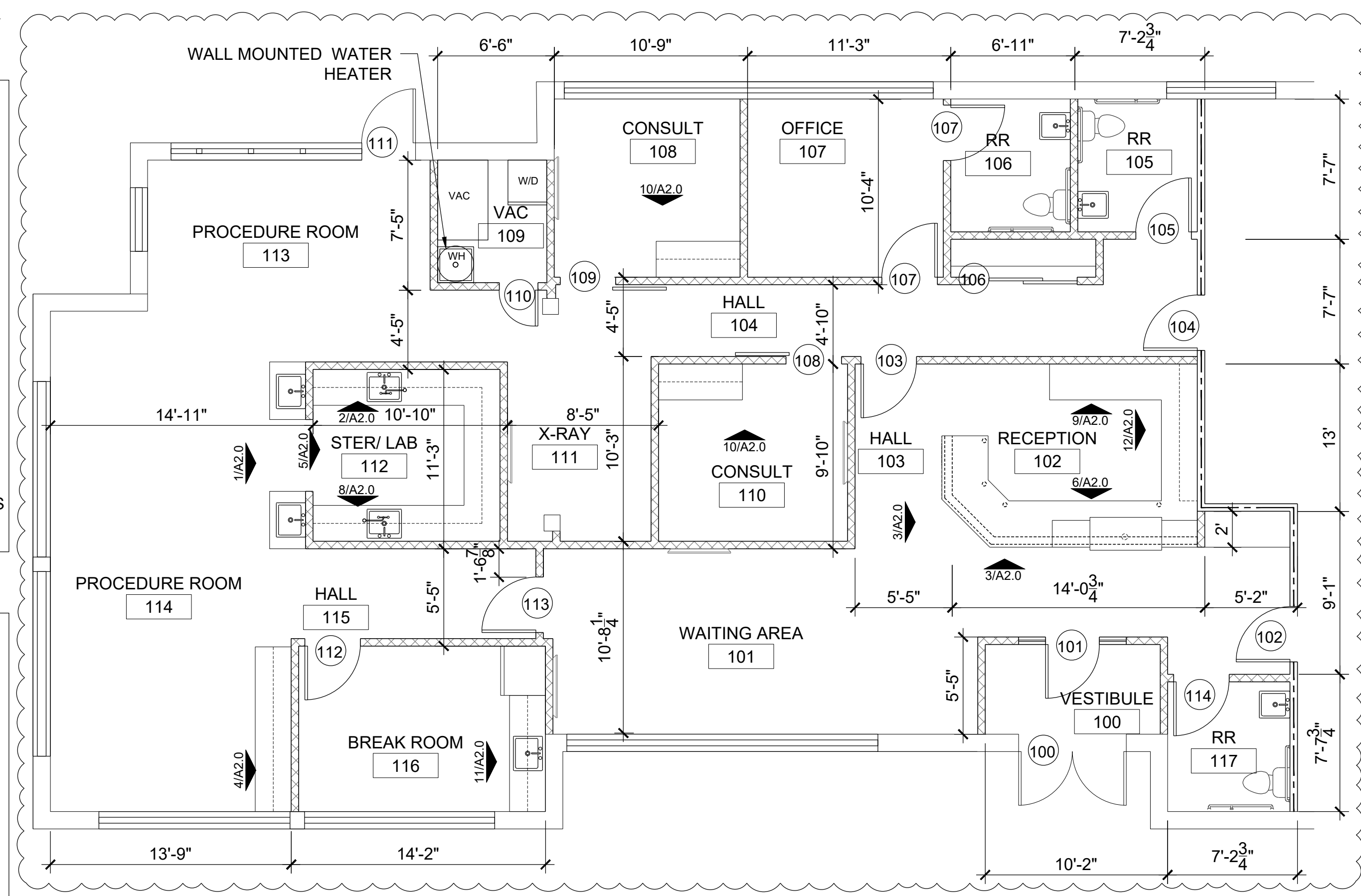


2 FINISH PLAN
SCALE: 3/16" = 1'-0"
NORTH



3 LEVEL 1 RCP
SCALE: 3/16" = 1'-0"
NORTH

- #### CEILING LEGEND
- GYPSUM BOARD CEILING
 - LAY-IN GRID & ACOUSTICAL CEILING TILE, COMMERCIAL GRADE, WHITE
 - 2x4 LOW PROFILE CENTER BASKET DIRECT/INDIRECT RECESSED LED LIGHT FIXTURE
 - PENDANT LIGHT
 - RECESSED CAN LIGHTS
- #### FLOOR PLAN LEGEND
- EXISTING WALL TO REMAIN
 - 25 GA. 3 5/8" METAL STUDS @ 16" O.C. EXTENDING TO DECK WITH 5/8" TYPE 'X' GYP. BD. ON BOTH SIDES EXTENDING TO DECK
 - 1 HOUR FIRE RATED WALL
 - LOW WALL AT RECEPTION DESK, SEE ELEVATIONS



1 FLOOR PLAN
SCALE: 3/16" = 1'-0"
NORTH



Dev Anand
President & CEO

Kevin Campbell
Senior Architect

8807 Monrovia Street
Lenexa, Kansas 66215

Phone: 913.322.8892
Fax: 913.322.8896
Email: kevin@dev-inc.com

THIS DRAWING has been prepared by the Architect, or prepared under his direct supervision as an instrument of service and is intended for use only on this project. All Drawings, Specifications, ideas and designs, including the overall layout, form, arrangement, and composition of spaces and elements portrayed, constitute the original, unpublished work of the Architect. Any reproduction, use, or disclosure of the information contained herein without the written consent of the Architect is strictly prohibited.

COMPLY WITH all laws, codes, ordinances and regulations with authorities having jurisdiction and with requirements of the Landlord, if applicable. Do not start work until all permits and required approvals are obtained.



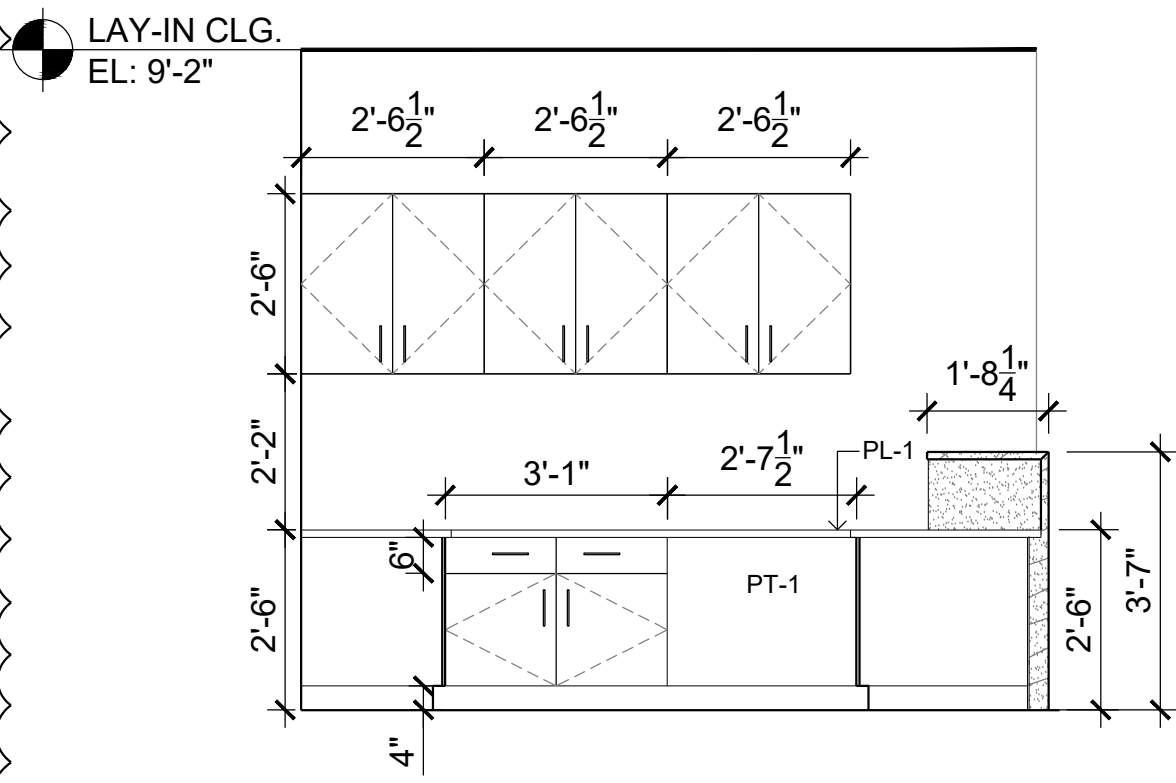
A TENANT FINISH FOR:
LAKWOOD ORTHODONTICS
1399 NE DOUGLAS ST
LEE'S SUMMIT, MO 64086



PROJECT NO. 210407
DRAWING ISSUANCE

08/13/2021	BUILDING PERMIT
09/03/2021	REV 01
09/08/2021	REV 02
10/06/2021	REV 03
01/19/2022	REV 04

SHEET NUMBER
A1.1
FLOOR PLAN



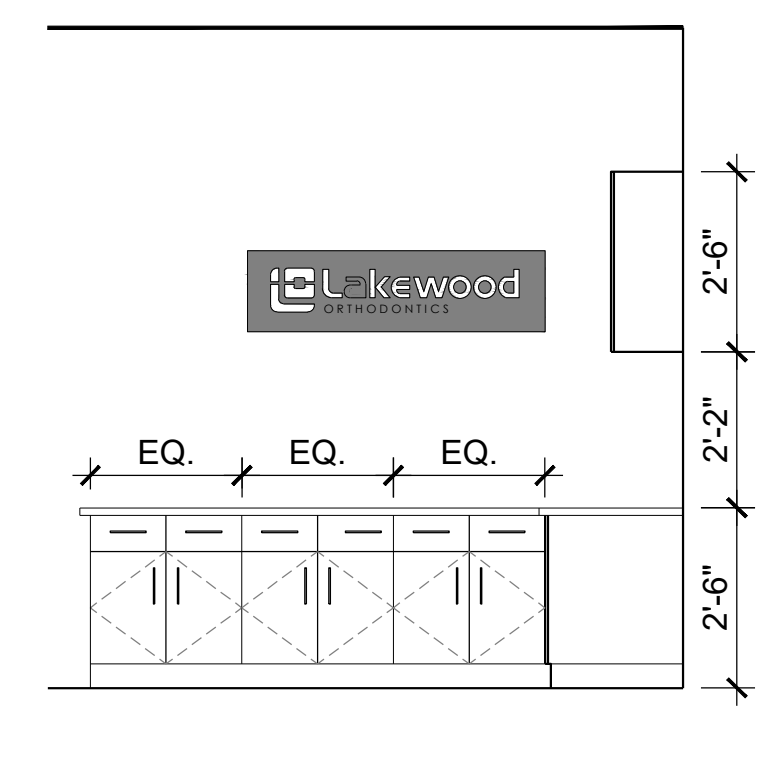
NOTES (RECEPTION CABINETS)

COUNTERTOP LAMINATE:
PL1: FORMICA 7223C-AN NEW WHITE

DOORS, BASE & SIDES:
PL2: FORMICA -5887-NT MILLENNIUM OAK

HARDWARE: MOCKETT-DP128 SERIES 6-11/16" ROUND TOP DRAWER PULL, COLOR: STAINLESS STEEL

12 ELEVATION
SCALE: 3/8" = 1'-0" RECEPTION



NOTES (RECEPTION DESK)

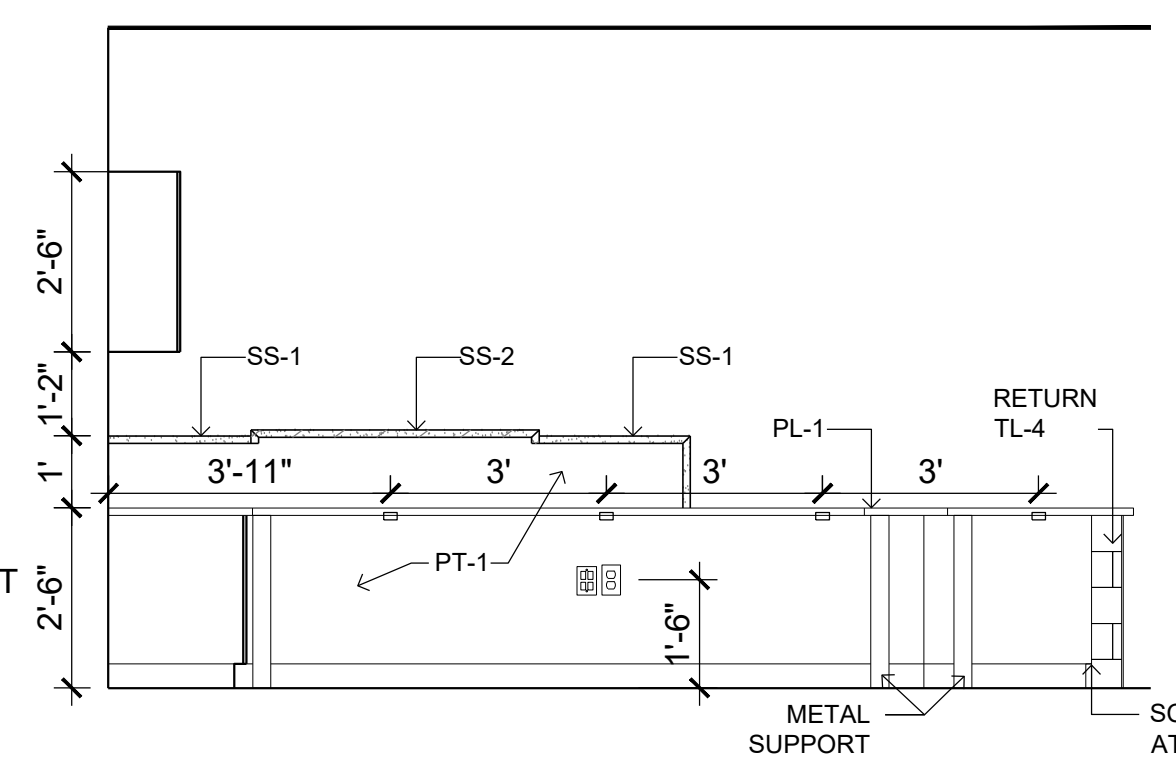
METAL LEG: DOUG MOCKETT TL28P-3 28-1/8" TABLE LEG 3" DIA. WITH PLATE LEVELER IN MATTE BLACK

GROMMET: 3" DOUG MOCKETT GROMMET IN WALNUT BROWN

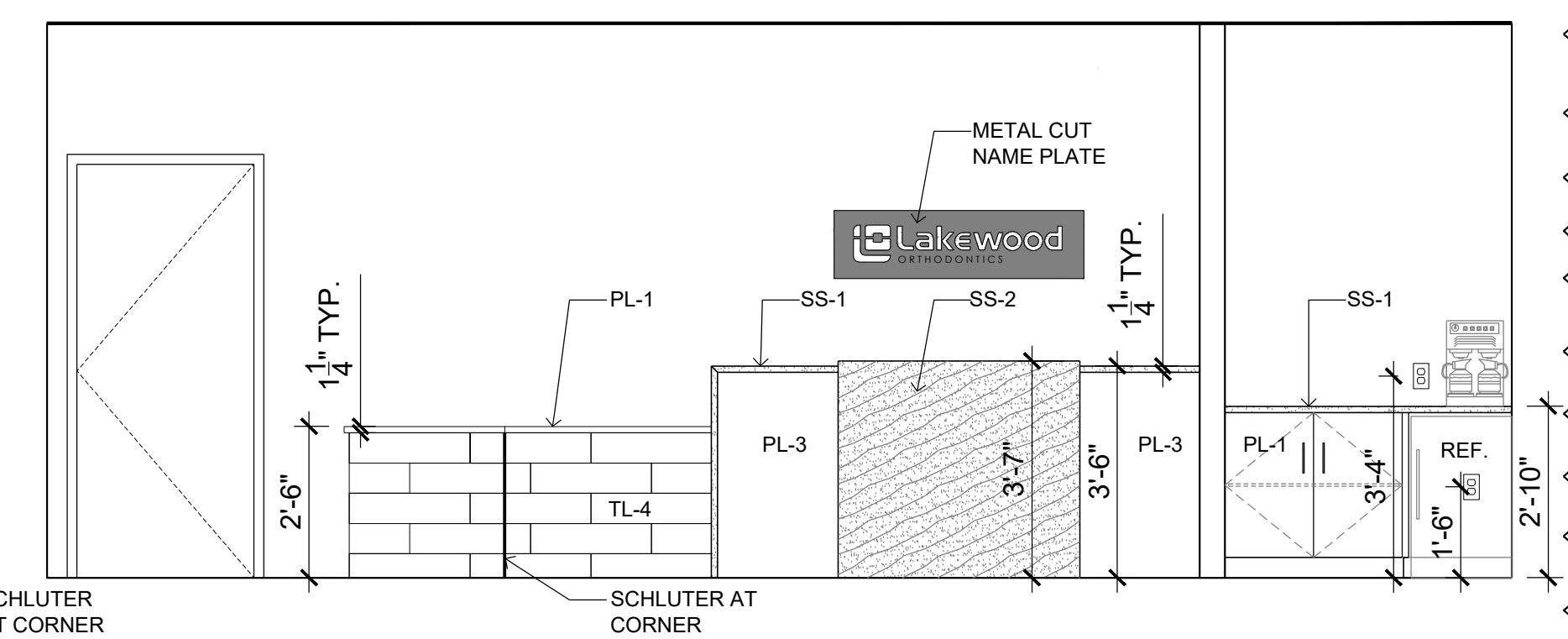
SUPPORT BRACKET: CENTERLINE NOTED HIDDEN IN WALL 22" FLOATING COUNTERTOP STUDS SUPPORT BRACKET

SCHLUTER TRIM: SCHLUTER-RODEC MODEL: RO 100 GS

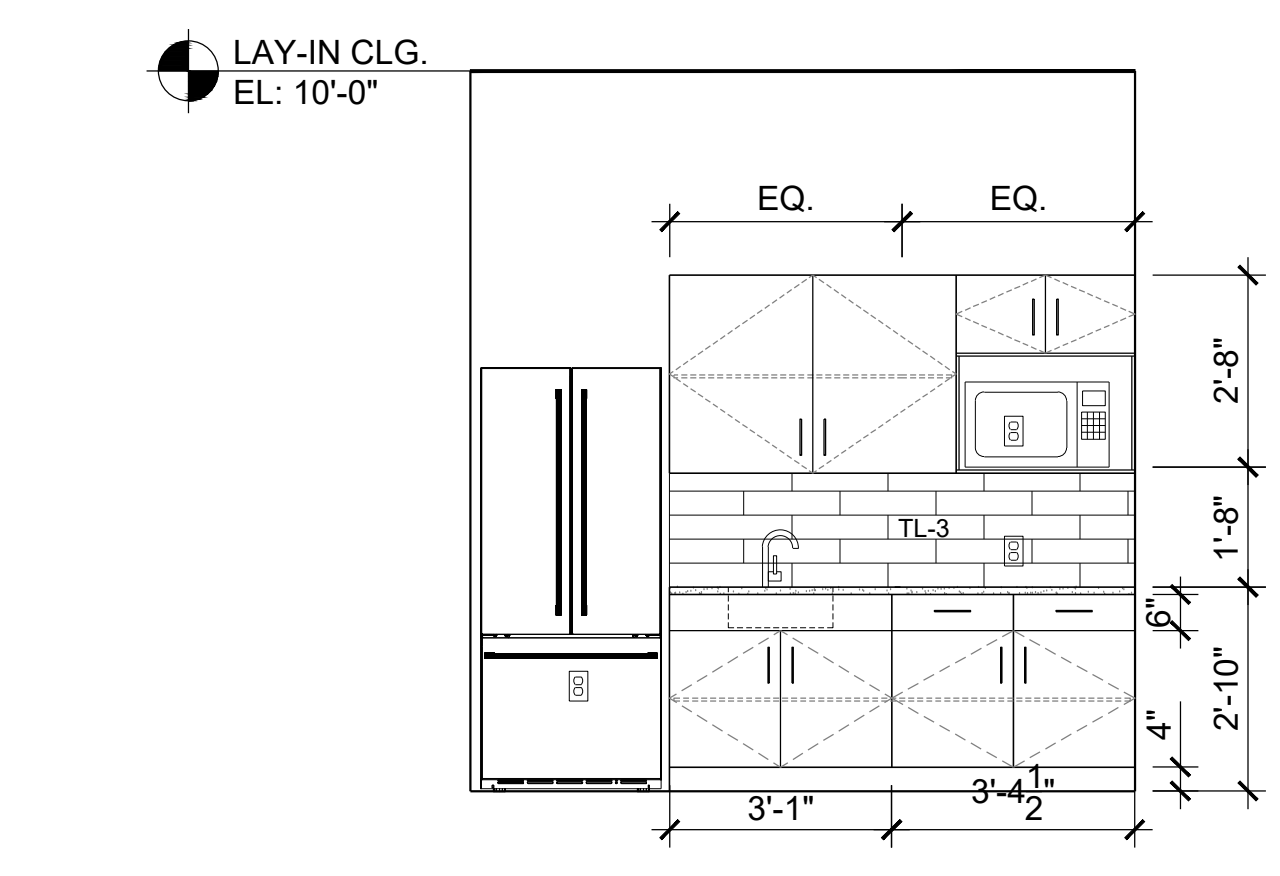
9 ELEVATION
SCALE: 3/8" = 1'-0" RECEPTION



6 ELEVATION
SCALE: 3/8" = 1'-0" RECEPTION



3 ELEVATION
SCALE: 3/8" = 1'-0" RECEPTION



NOTES (BREAKROOM)

COUNTERTOP :
SS1: METRO QUARTZ- M5016 TRUE WHITE

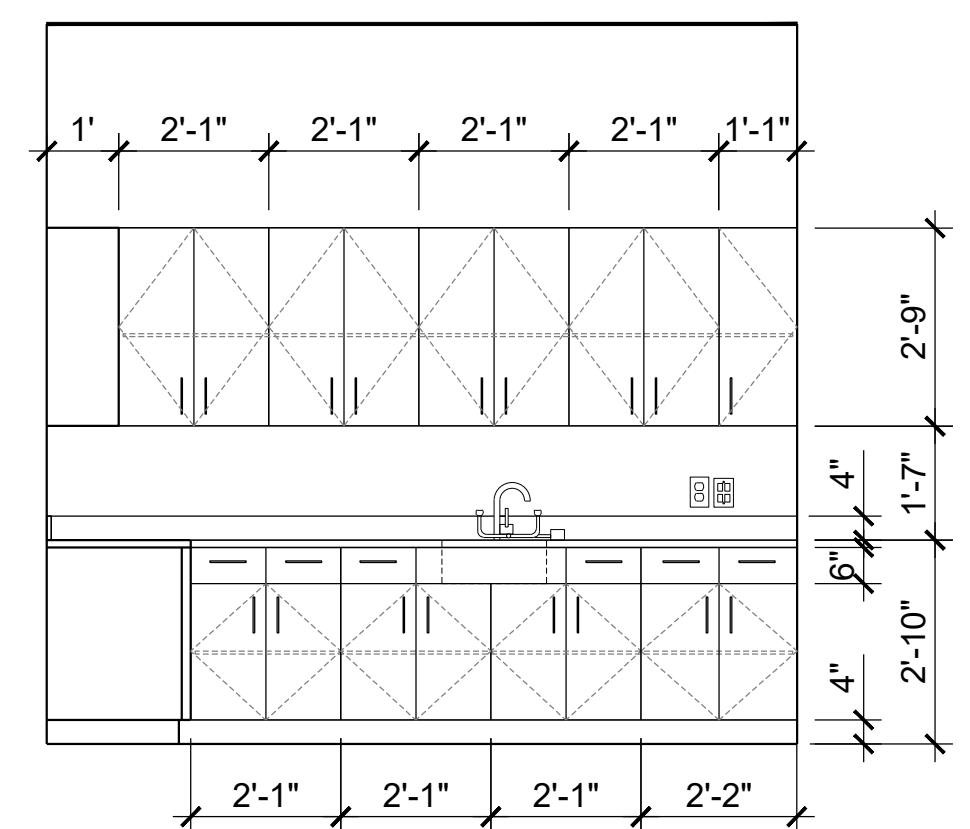
DOORS, BASE & SIDES:
PL2: FORMICA 5887-NT MILLENNIUM OAK

HARDWARE: MOCKETT- DP128 SERIES 6-11/16" ROUND TOP DRAWER PULL, COLOR: STAINLESS STEEL

FAUCET: DELTA-TRINSIC COLLECTION,MODEL DSP-K-9159-DST

SINK: HIGOLD- STAINLESS STEEL TOPMOUNT SINK MODEL SUS304

11 ELEVATION
SCALE: 3/8" = 1'-0" BREAK RM

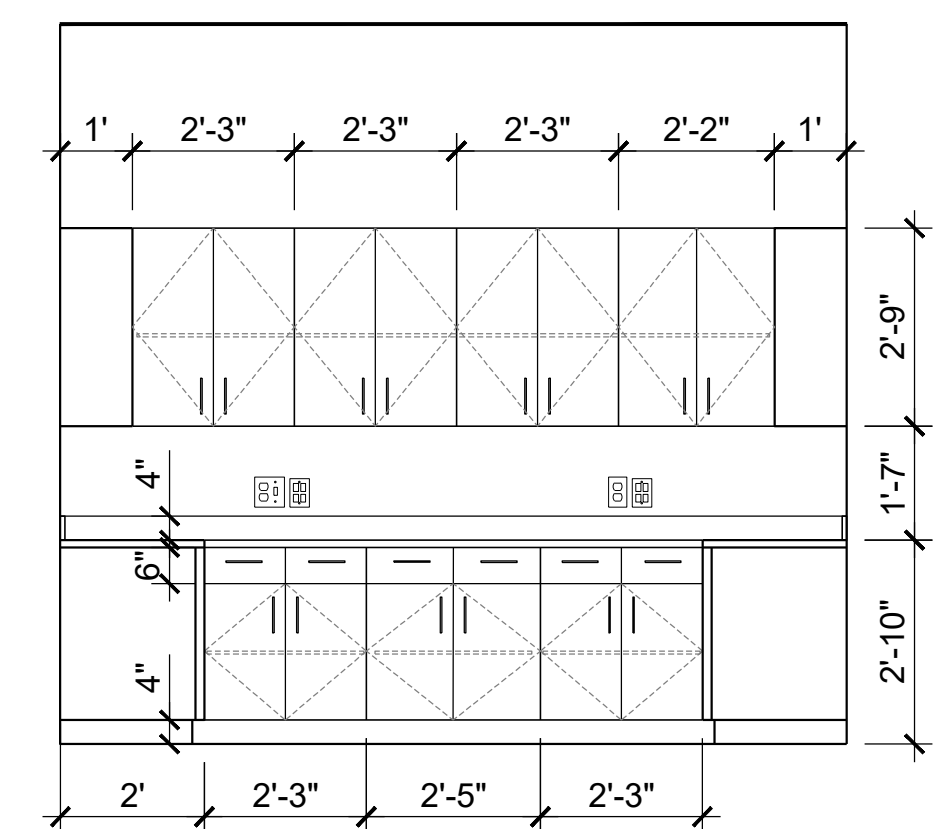


NOTES (CONSULT)

COUNTERTOP LAMINATE:
PL1: FORMICA 7223C-AN NEW WHITE

UPPER CABINETS:
PL1: FORMICA 5887-NT MILLENNIUM OAK

8 ELEVATION
SCALE: 3/8" = 1'-0" STER / LAB



NOTES (PROCEDURE CABINETS)

COUNTERTOP LAMINATE:
PL1: FORMICA 7223C-AN NEW WHITE

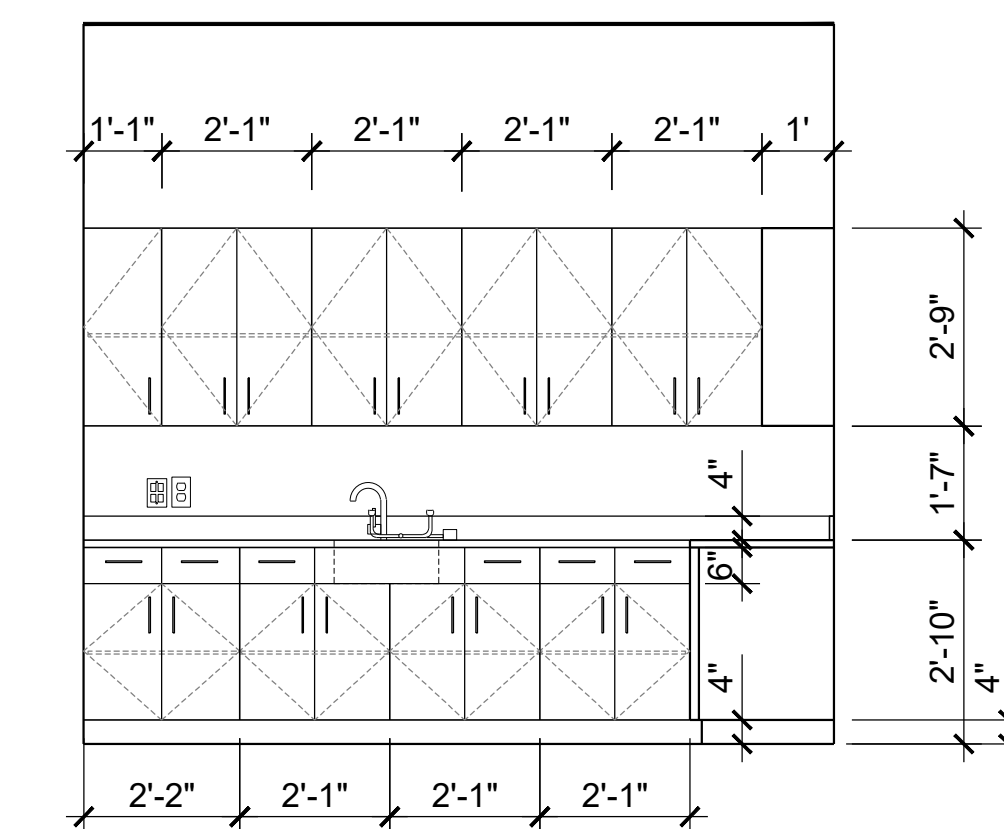
DOORS, BASE & SIDES:
PL2: FORMICA 5887-NT MILLENNIUM OAK

HARDWARE: MOCKETT- DP128 SERIES 6-11/16" ROUND TOP DRAWER PULL, COLOR: STAINLESS STEEL

FAUCET: DELTA-TRINSIC COLLECTION,MODEL DSP-K-9159-DST

SINK: HIGOLD- STAINLESS STEEL TOPMOUNT SINK MODEL SUS304

5 ELEVATION
SCALE: 3/8" = 1'-0" STER / LAB



NOTES (STER/ LAB)

COUNTERTOP LAMINATE:
PL1: FORMICA 7223C-AN NEW WHITE

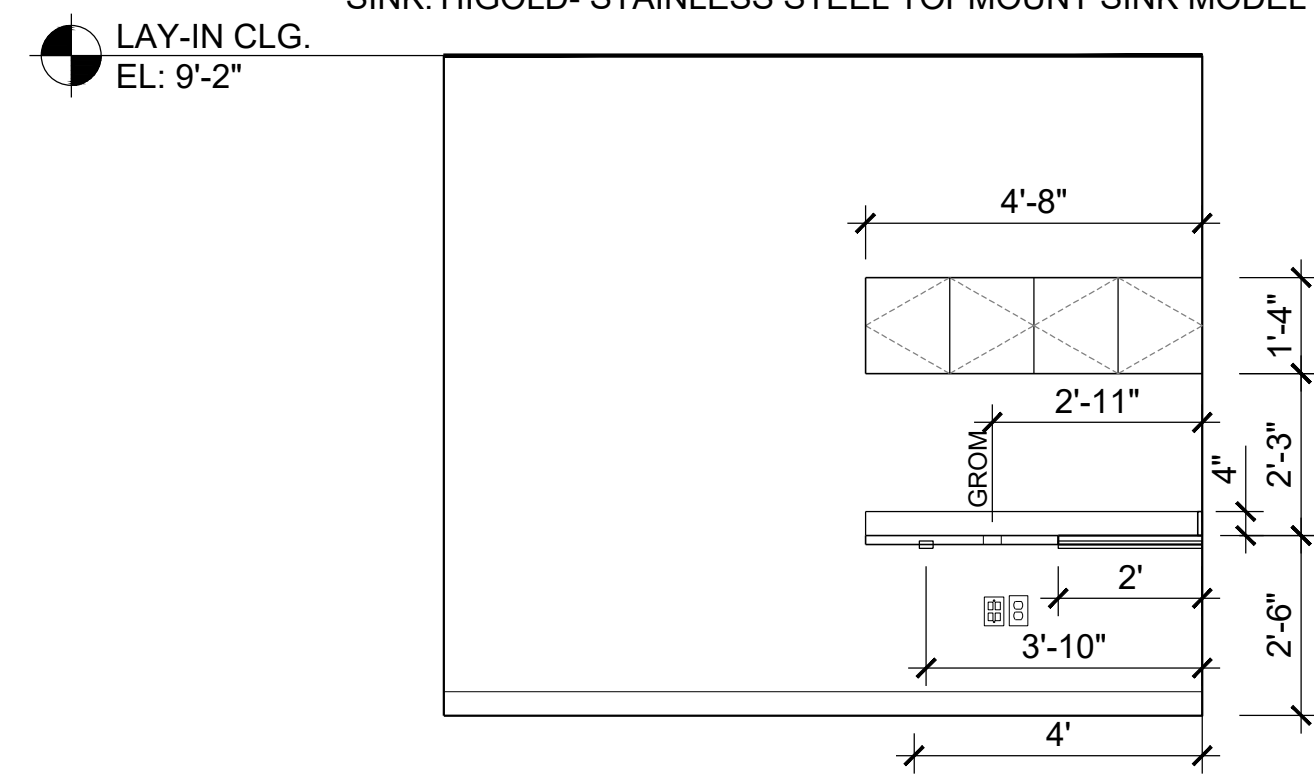
DOORS, BASE & SIDES:
PL2: FORMICA 5887-NT MILLENNIUM OAK

HARDWARE: MOCKETT- DP128 SERIES 6-11/16" ROUND TOP DRAWER PULL, COLOR: STAINLESS STEEL

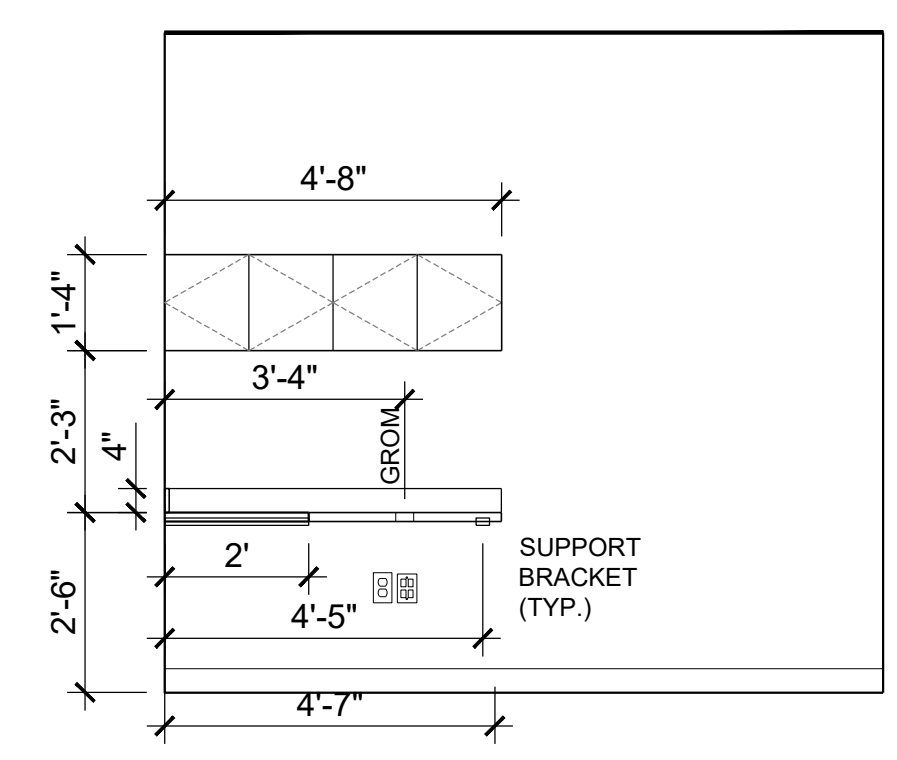
FAUCET: DELTA-TRINSIC COLLECTION,MODEL DSP-K-9159-DST

SINK: HIGOLD- STAINLESS STEEL TOPMOUNT SINK MODEL SUS304

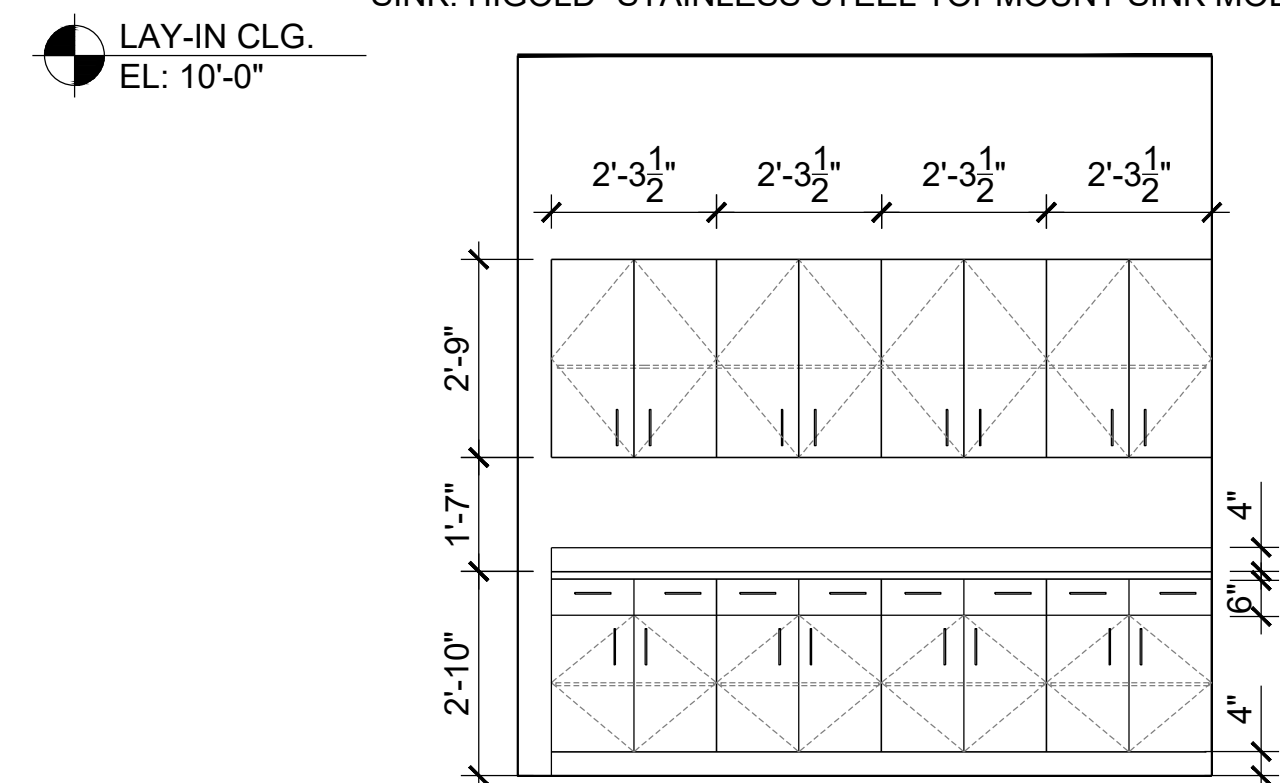
2 ELEVATION
SCALE: 3/8" = 1'-0" STER / LAB



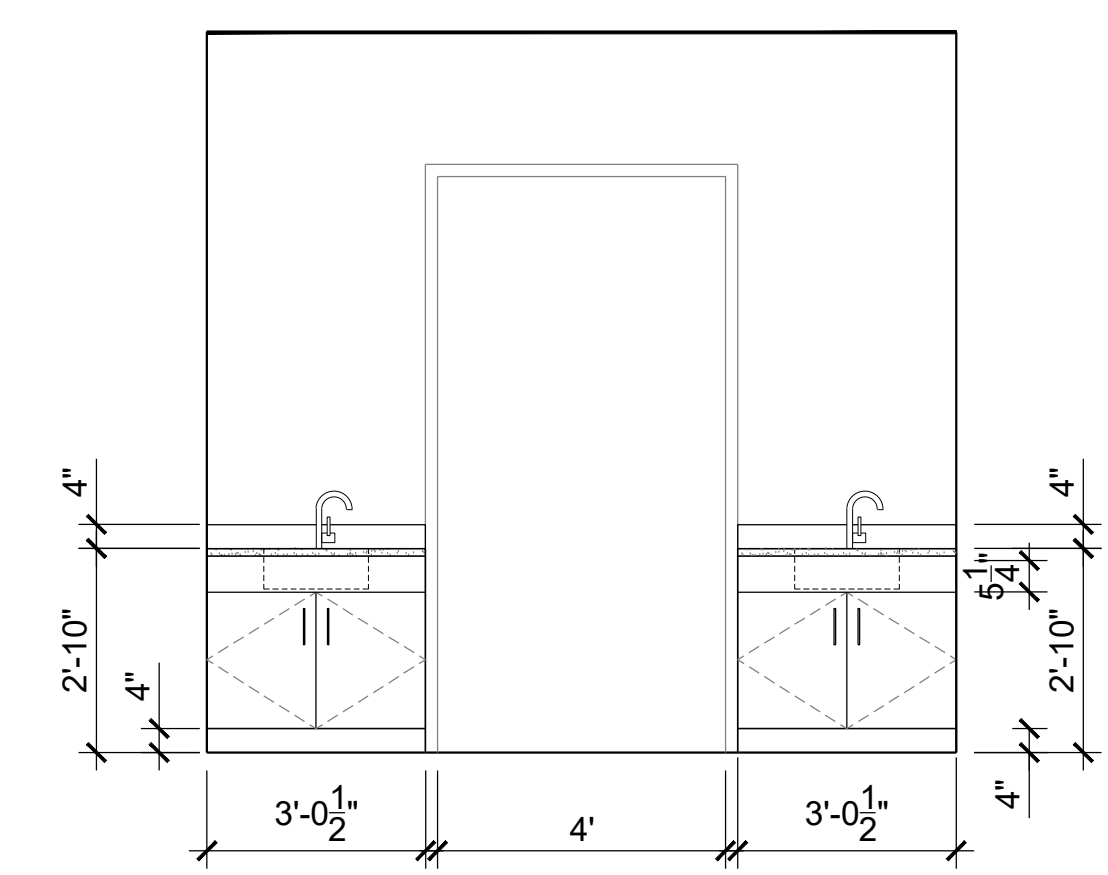
10 ELEVATION
SCALE: 3/8" = 1'-0" CONSULT



7 ELEVATION
SCALE: 3/8" = 1'-0" CONSULT



4 ELEVATION
SCALE: 3/8" = 1'-0" PROCEDURE



1 ELEVATION
SCALE: 3/8" = 1'-0" PROCEDURE



Dev Anand
President & CEO

Kevin Campbell
Senior Architect

8807 Monrovia Street
Lenexa, Kansas 66215

Phone: 913.322.8892
Fax: 913.322.8896
Email: kevin@dev-inc.com

THIS DRAWING has been prepared by the Architect, or prepared under his direct supervision as an instrument of service and is intended for use only on this project. All Drawings, Specifications, ideas and designs, including the overall layout, form, arrangement, and composition of spaces and elements portrayed, constitute the original, unpublished work of the Architect. Any reproduction, use, or disclosure of the information contained herein without the written consent of the Architect is strictly prohibited.

COPYRIGHT all laws, codes, ordinances and regulations with authorities having jurisdiction and with requirements of the Landlord, if applicable. Do not start work until all permits and required approvals are obtained.



A TENANT FINISH FOR:

LAKWOOD ORTHODONTICS

1399 NE DOUGLAS ST
LEE'S SUMMIT, MO 64086



PROJECT NO. 210407
DRAWING ISSUANCE
08/13/2021 BUILDING PERMIT REV 02
08/06/2021 REV 02
01/19/2022 REV 04

SHEET NUMBER
A2.0
ELEVATIONS

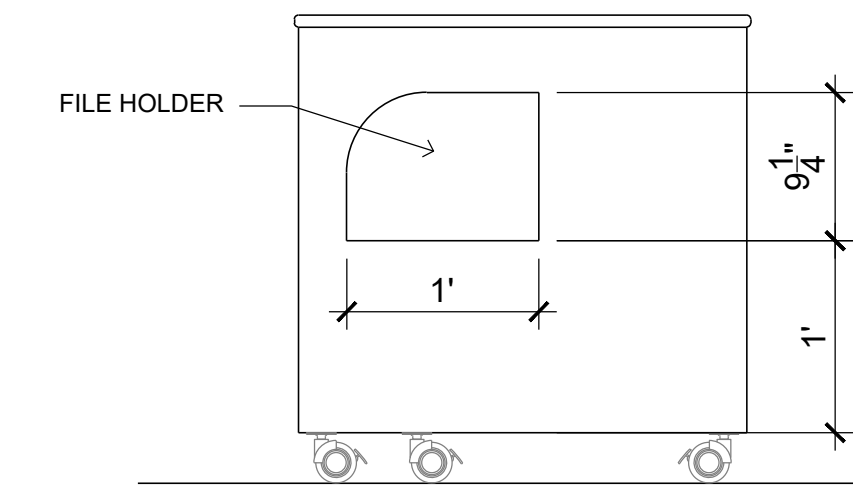


01/19/2022

PROJECT NO. 210407
DRAWING ISSUANCE
01/19/2022 REV 04

SHEET NUMBER

A2.1
ELEVATIONS

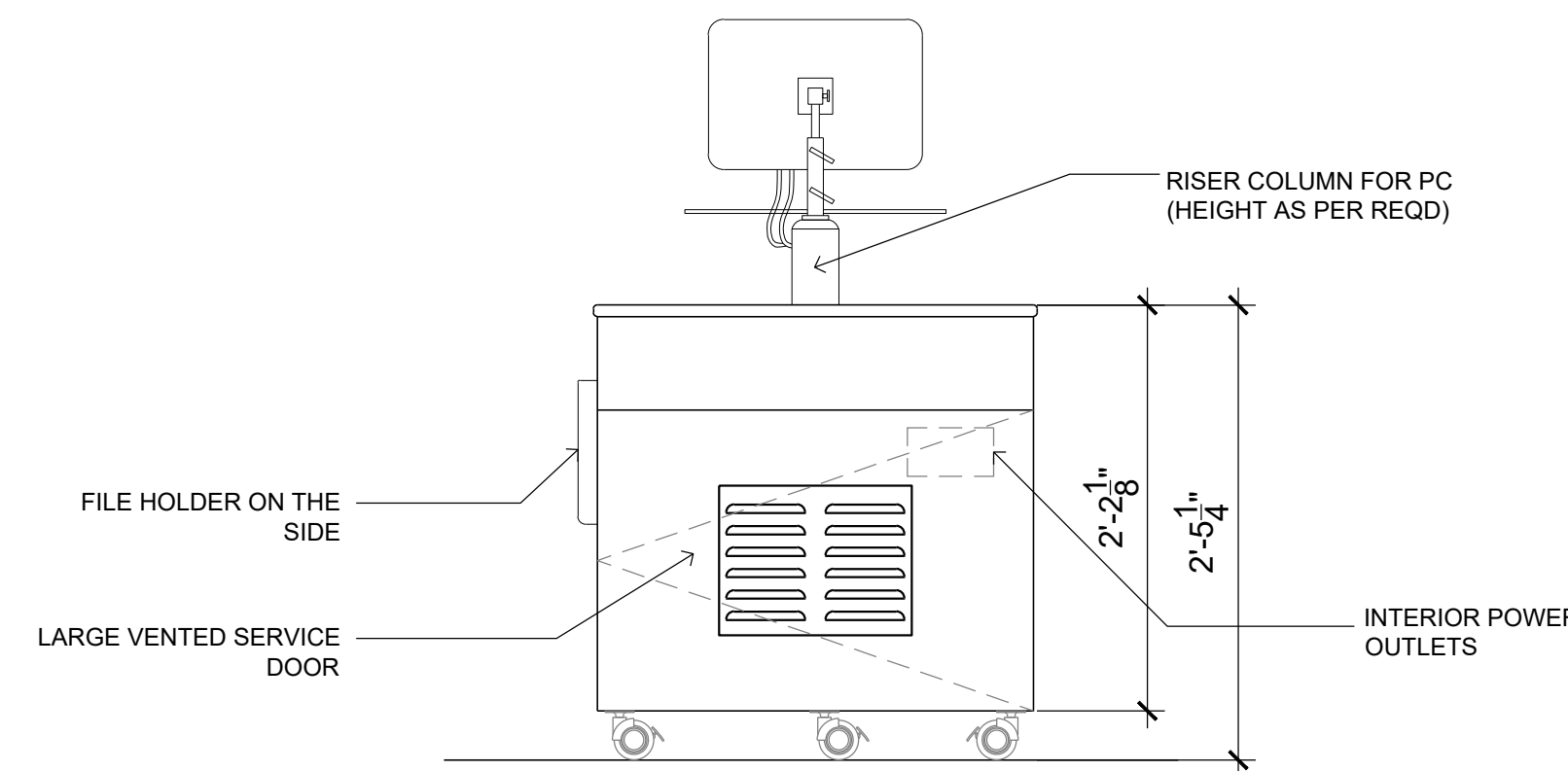


3 ELEVATION
SCALE: 3/8" = 1'-0" EAST SIDE

NOTES

COUNTERTOP:
3/4" QUARTZ COUNTER TOP

CASTER:
CA54PC - 3-5/32" HOLLOW WHEEL CASTER, POLISHED CHROME W/
BRAKE & PLATE - MCKETT

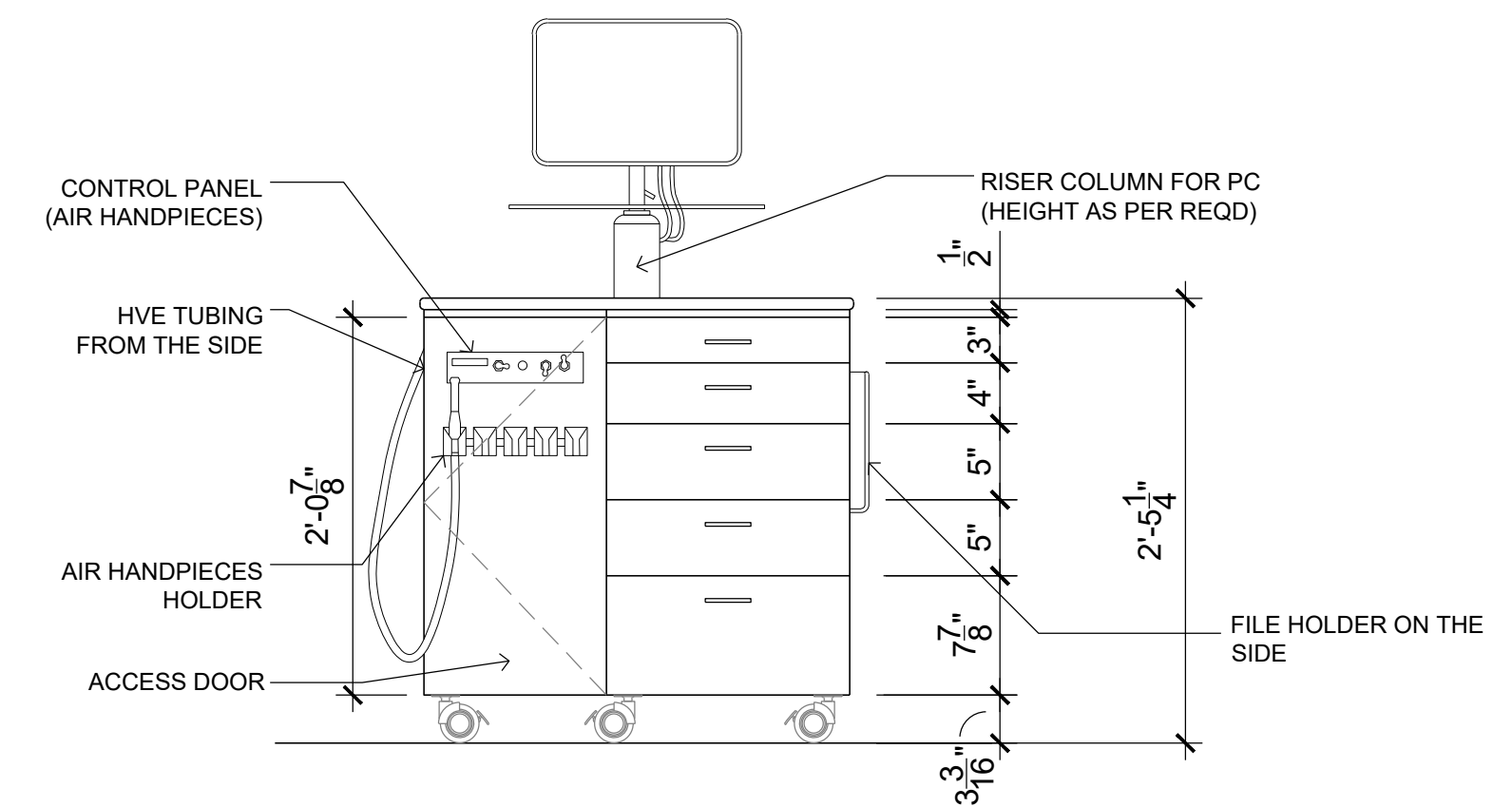


5 ELEVATION
SCALE: 1" = 1'-0" REAR

NOTES

COUNTERTOP:
3/4" QUARTZ COUNTER TOP

CASTER:
CA54PC - 3-5/32" HOLLOW WHEEL CASTER, POLISHED CHROME W/
BRAKE & PLATE - MCKETT



2 ELEVATION
SCALE: 1" = 1'-0" FRONT

NOTES

COUNTERTOP:
3/4" QUARTZ COUNTER TOP

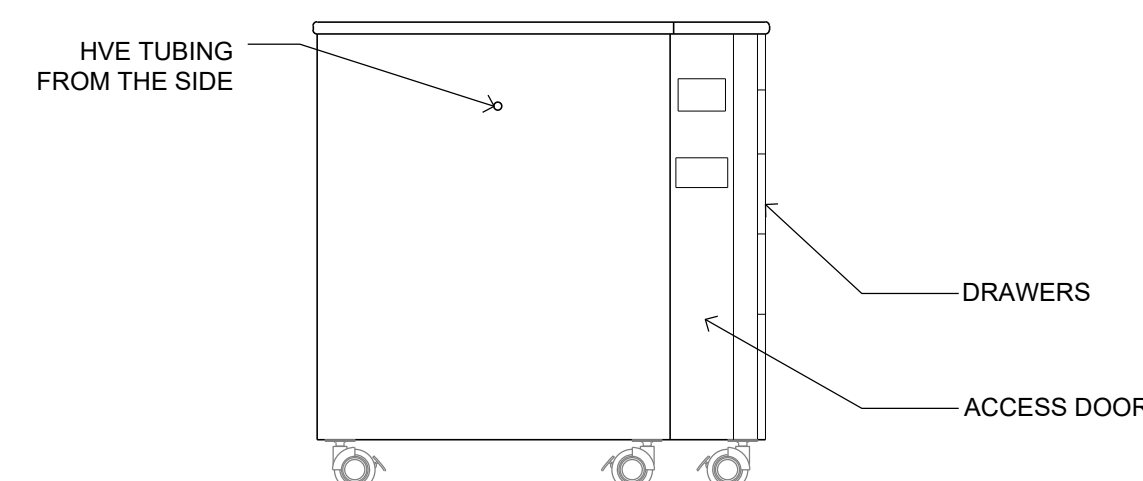
CASTER:
CA54PC - 3-5/32" HOLLOW WHEEL CASTER, POLISHED CHROME W/
BRAKE & PLATE - MCKETT

DRAWERS:
FIT WITH AUTOCLAVABLE DRAWER ORGANISERS, PLIER HOLDERS
AND ARCHWIRE HOLDERS
BALL BEARING SLIDE, HAFELE MATRIX RUNNER BBA45, STEEL, SIDE
MOUNTING

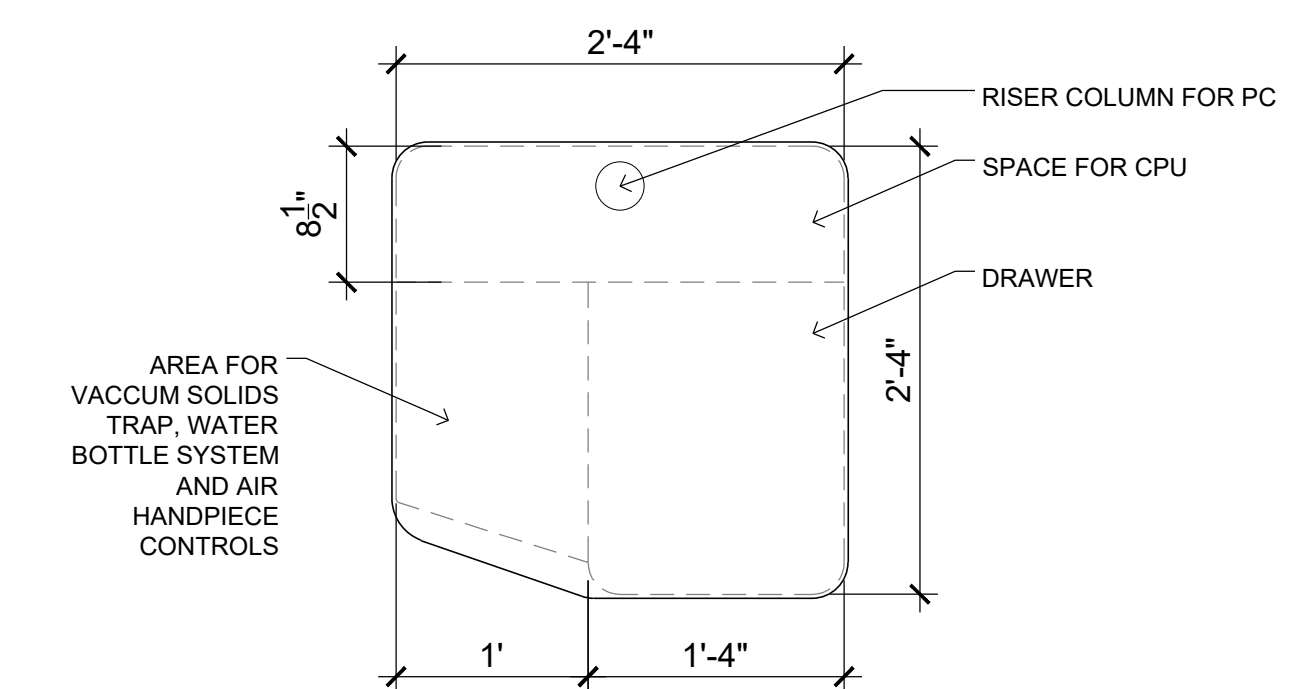
NOTES

COUNTERTOP:
3/4" QUARTZ COUNTER TOP

CASTER:
CA54PC - 3-5/32" HOLLOW
WHEEL CASTER, POLISHED
CHROME W/ BRAKE & PLATE -
MCKETT



4 ELEVATION
SCALE: 3/8" = 1'-0" WEST SIDE



1 PLAN
SCALE: 1" = 1'-0" PORTABLE ORTHODONTIST CABINET

NEW SHEET

THIS DRAWING has been prepared by the Architect, or prepared under his direct supervision as an instrument of service and is intended for use only on this project. All Drawings, Specifications, Ideas and designs, including the overall layout, form, arrangement, and composition of spaces and elements portrayed, constitute the original, unpublished work of the Architect. Any reproduction, use, or disclosure of the information contained herein without the written consent of the Architect is strictly prohibited.

COMPLY WITH all laws, codes, ordinances and regulations with authorities having jurisdiction and with requirements of the Landlord, if applicable. Do not start work until all permits and required approvals are obtained.

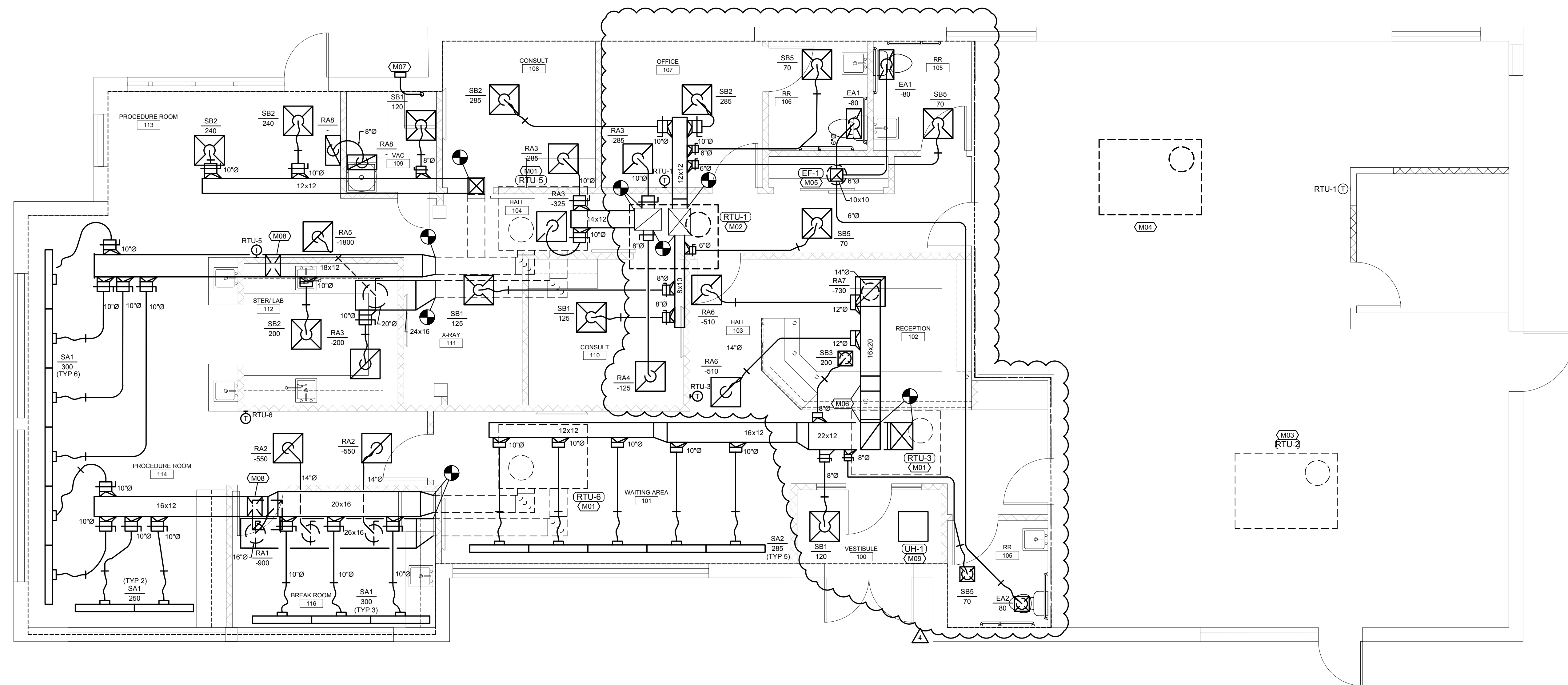


PROJECT NO. 210407
DRAWING ISSUANCE

08/13/2021	PERMIT
09/03/2021	REV 01
10/05/2021	REV 03
01/18/2022	REV 04

SHEET NUMBER

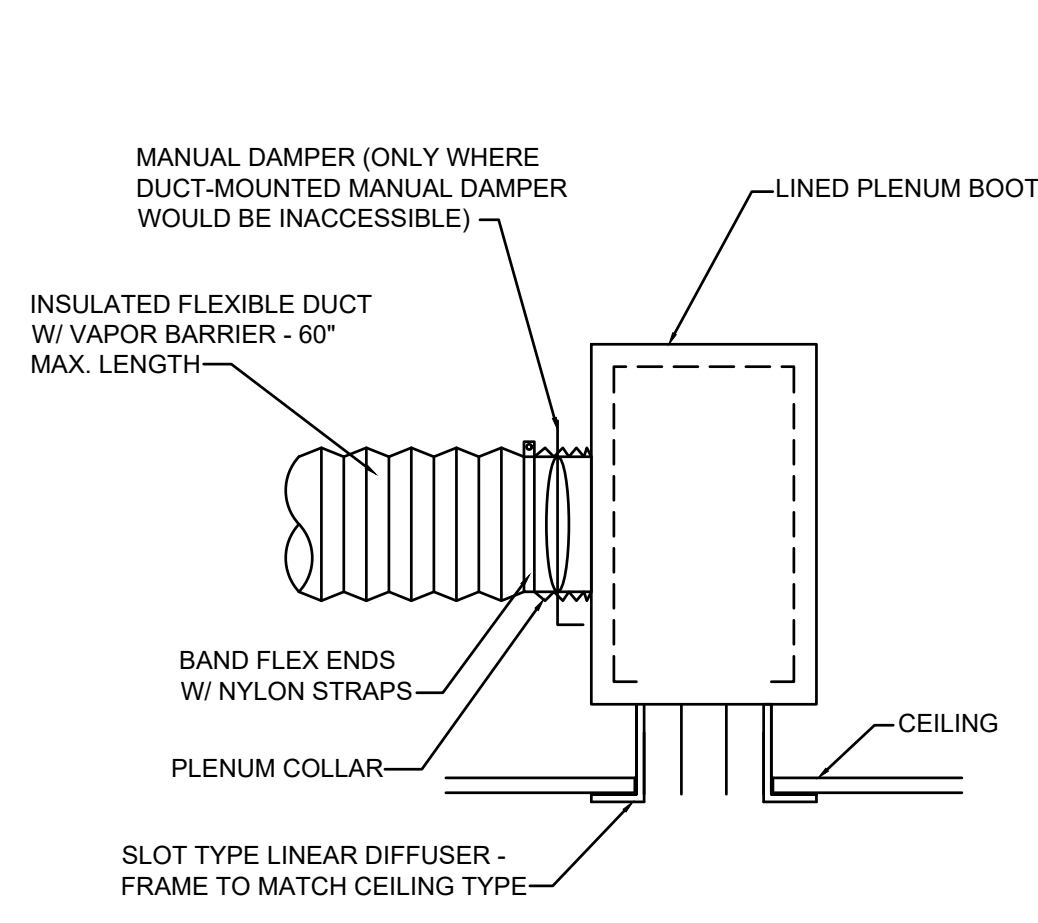
M1.0
FLOOR PLAN-
MECHANICAL



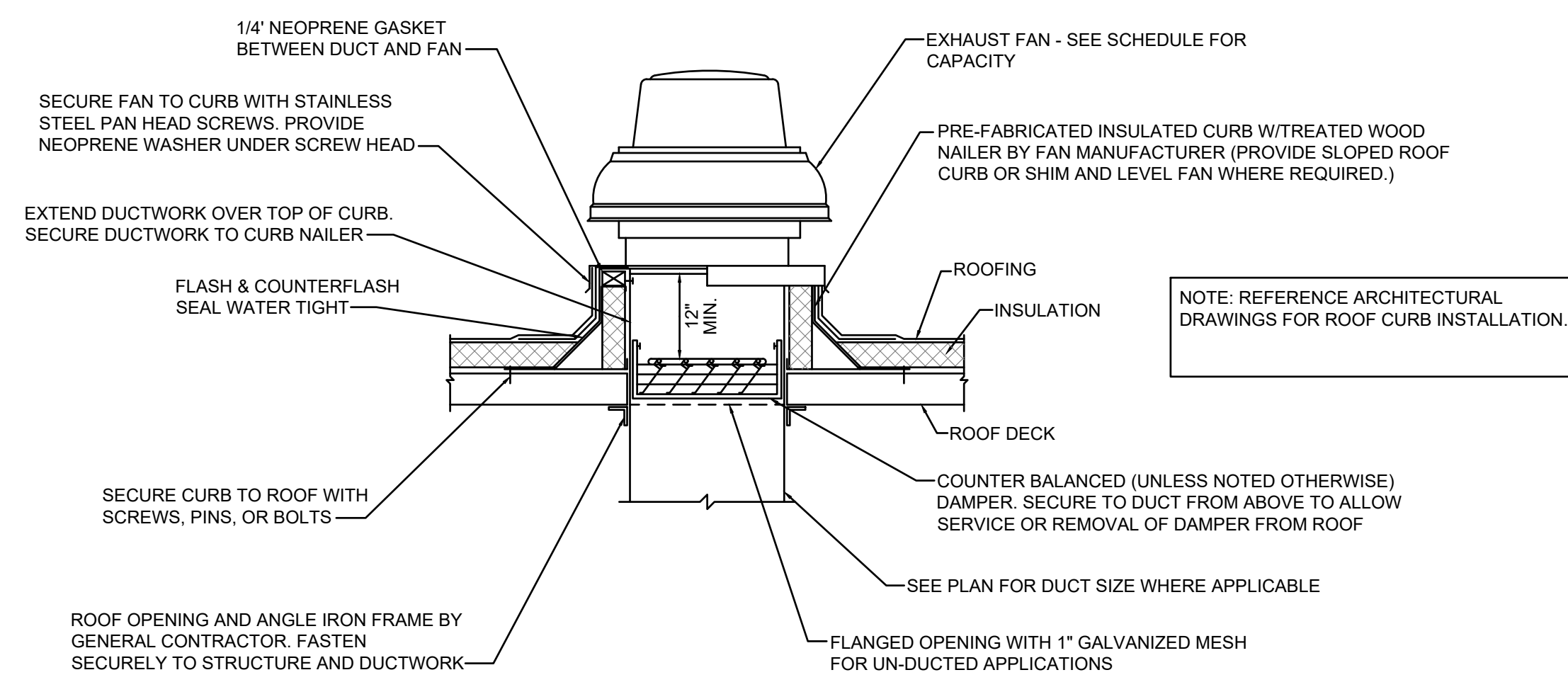
FLOOR PLAN-MECHANICAL
SCALE: 1/4"=1'-0"

FLOOR PLAN NOTES

- EXISTING ROOFTOP UNIT TO REMAIN. REMOVE ALL ASSOCIATED DUCTWORK, DIFFUSERS AND THERMOSTAT. FIELD VERIFY EXACT LOCATION OF UNIT AND PROVIDE NEW DUCTWORK AS SHOWN. CLEAN UNIT, GREASE ALL BEARINGS, LEAK-CHECK AND CHARGE REFRIGERANT SYSTEM, REPLACE FILTERS, AND CLEAN OUTDOOR AND INDOOR COILS. PROVIDE FLEXIBLE CONNECTORS ON THE SUPPLY AND RETURN AIR DUCT CONNECTIONS. TRANSITION TO DUCT SIZES SHOWN.
- REMOVE EXISTING 5-TON ROOFTOP UNIT AND ALL ASSOCIATED DUCTWORK, DIFFUSERS AND THERMOSTAT. PROVIDE NEW 3-TON ROOFTOP UNIT IN SAME LOCATION PROVIDING CURB ADAPTER AS REQUIRED. PROVIDE CURB ADAPTER, SHIM UNIT AND CURB LEVEL FOR PROPER CONDENSATE DRAINAGE. PROVIDE FLEXIBLE CONNECTORS ON SUPPLY AND RETURN AIR DUCT CONNECTIONS. TRANSITION TO DUCT SIZES SHOWN.
- EXISTING ROOFTOP UNIT TO REMAIN. REMOVE ALL ASSOCIATED DUCTWORK, DIFFUSERS AND THERMOSTAT. CLEAN UNIT, GREASE ALL BEARINGS, LEAK-CHECK AND CHARGE REFRIGERANT SYSTEM, REPLACE FILTERS, AND CLEAN OUTDOOR AND INDOOR COILS. PROVIDE FLEXIBLE CONNECTORS ON THE SUPPLY AND RETURN AIR DUCT CONNECTIONS. INSTALL NEW THERMOSTAT IN LOCATION SHOWN PROVIDING AN ADDITIONAL 20FT. OF WIRING FOR FUTURE RELOCATION.
- REMOVE EXISTING PACKAGED ROOFTOP UNIT, ROOF CURB, ALL ASSOCIATED DUCTWORK, DIFFUSERS AND THERMOSTAT.
- PROVIDE ROOF MOUNTED EXHAUST FAN AND CURB. FAN SHALL BE INTERLOCKED WITH LIGHTS. COORDINATE WITH ELECTRICIAN.
- REMOVE EXISTING ROUND TAPS AT THE BOTTOM RETURN AIR OPENING FROM THE ROOFTOP UNIT. TRANSITION DUCT TO SIZE SHOWN ROUTE RETURN DUCT BETWEEN JOIST. DUCTWORK WILL NEED TO TRANSITION DOWN IN ORDER TO FIT ROUND TAPS TO RETURN GRILLES.
- PROVIDE 4" Ø DRYER VENT EXHAUST DUCT EXTENDED TO THE EXTERIOR WALL. PROVIDE DRYER VENT CAP WITH FLASHED AND SEALED WITH EXTERIOR WALL.
- ELBOW DUCT UP AND ROUTE ABOVE CEILING.
- PROVIDE RECESSED CEILING MOUNTED HEATER.



LINEAR DIFFUSER DETAIL
NO SCALE



ROOF MOUNTED EXHAUST FAN DETAIL
NO SCALE

ROOFTOP UNIT SCHEDULE (GAS-FIRED)

MARK NO.	MANUFACTURER	NEW/ EXISTING	MODEL	AIRFLOW CFM	MIN O.A. CFM	EXT. S.P. (IN W.G.)	COOLING					HEATING-GAS				ELECTRICAL			HP	NOTES			
							AMB. (°F)	E.D.B. (°F)	E.W.B. (°F)	L.D.B. (°F)	L.W.B. (°F)	TOTAL MBH	SENS. MBH	STAGES	EER	INPUT MBH	OUTPUT MBH	STAGES			VOLT	ø	HZ
RTU-1	LENNOX	NEW	KGA036	1030	155	0.5	105	78	66.2	57	56.5	35	28	1	10.7	65	52	1	208	3	60	1	1.4
RTU-2	LENNOX	EXISTING	KGA062	3000	450	-	105	78	66.2	57	56.5	90	72	-	-	160	144	2	208	3	60	-	4.5
RTU-3	LENNOX	EXISTING	KGA060	1815	265	-	105	78	66.2	57	56.5	58	46.4	-	-	150	120	2	208	3	60	-	4.5
RTU-5	LENNOX	EXISTING	GCS16-060	2000	320	-	105	78	66.2	57	56.5	58	46.4	-	-	120	96	1	208	3	60	-	4.5
RTU-6	LENNOX	EXISTING	GCS16-060	2000	300	-	105	78	66.2	57	56.5	58	46.4	-	-	120	96	1	208	3	60	-	4.5

NOTES:
 1. PROVIDE WITH WALL MOUNTED 24/7 PROGRAMMABLE THERMOSTAT, DISCONNECT SWITCH, AND CONDENSATE DRAIN TRAP.
 2. PROVIDE WITH 2" MERV 8 FILTERS.
 3. PROVIDE WITH DRY BULB ECONOMIZER. INCLUDE WITH BAROMETRIC RELIEF DAMPER.
 4. PROVIDE WITH CURB ADAPTER. FIELD VERIFY DIMENSIONS OR EXISTING CURB.
 5. PROVIDE NEW WALL MOUNTED 24/7 PROGRAMMABLE THERMOSTAT.

FAN SCHEDULE

MARK NO.	MANUFACTURER	MODEL	TYPE	AIRFLOW (CFM)	S.P. (IN W.G.)	FAN TYPE	RPM	DRIVE	ELECTRICAL			HP/ WATTS	NOTES
									VOLT	ø	HZ		
EF-1	GREENHECK	CUE-070D	DOWNBLAST	240	0.3	CBT	1550	DIRECT	120	1	60	130	1

NOTES:
 1. PROVIDE WITH ROOF CURB AND DISCONNECT SWITCH.

DIFFUSER SCHEDULE

MARK	MANUFACTURER	MODEL	FACE SIZE (IN.)	NECK SIZE (IN.)	NO. OF SLOTS	FRAME TYPE*	FINISH	NOTES
SA1	PRICE	SDS100	6X48	10"	3 (1")	LAY-IN	WHITE	1
SA2	PRICE	SDS100	6X48	10"	3 (1")	LAY-IN	WHITE	1,3
SB1	PRICE	SFD	24X24	8"	NA	LAY-IN	WHITE	-
SB2	PRICE	SFD	24X24	10"	NA	LAY-IN	WHITE	-
SB3	PRICE	SFD	24X12	8"	NA	SURFACE	WHITE	-
SB4	PRICE	SFD	12X12	8"	NA	SURFACE	WHITE	2
SB5	PRICE	SFD	24X24	6"	NA	LAY-IN	WHITE	-
RA1	PRICE	PDOR	24X24	16"	NA	LAY-IN	WHITE	-
RA2	PRICE	PDOR	24X24	14"	NA	LAY-IN	WHITE	-
RA3	PRICE	PDOR	24X24	10"	NA	LAY-IN	WHITE	-
RA4	PRICE	PDOR	24X24	8"	NA	LAY-IN	WHITE	-
RA5	PRICE	PDOR	24X24	20"	NA	LAY-IN	WHITE	-
RA6	PRICE	PDOR	24X24	12"	NA	LAY-IN	WHITE	2
RA7	PRICE	PDOR	24X24	14"	NA	LAY-IN	WHITE	2
RA8	PRICE	PDOR	24X12	8"	NA	LAY-IN	WHITE	-
EA1	PRICE	PDOR	24X12	6"	NA	LAY-IN	WHITE	3
EA2	PRICE	PDOR	12X12	8"	NA	LAY-IN	WHITE	2

NOTES:
 1. PROVIDE WITH INSULATED SUPPLY PLENUM.
 2. PROVIDE WITH OPPOSED BLADE DAMPER AND PLASTER FRAME.
 3. PROVIDE WITH OPPOSED BLADE DAMPER.
 *CONTRACTOR SHALL VERIFY CEILING TYPE PRIOR TO ORDERING DIFFUSERS.

UNIT HEATER SCHEDULE

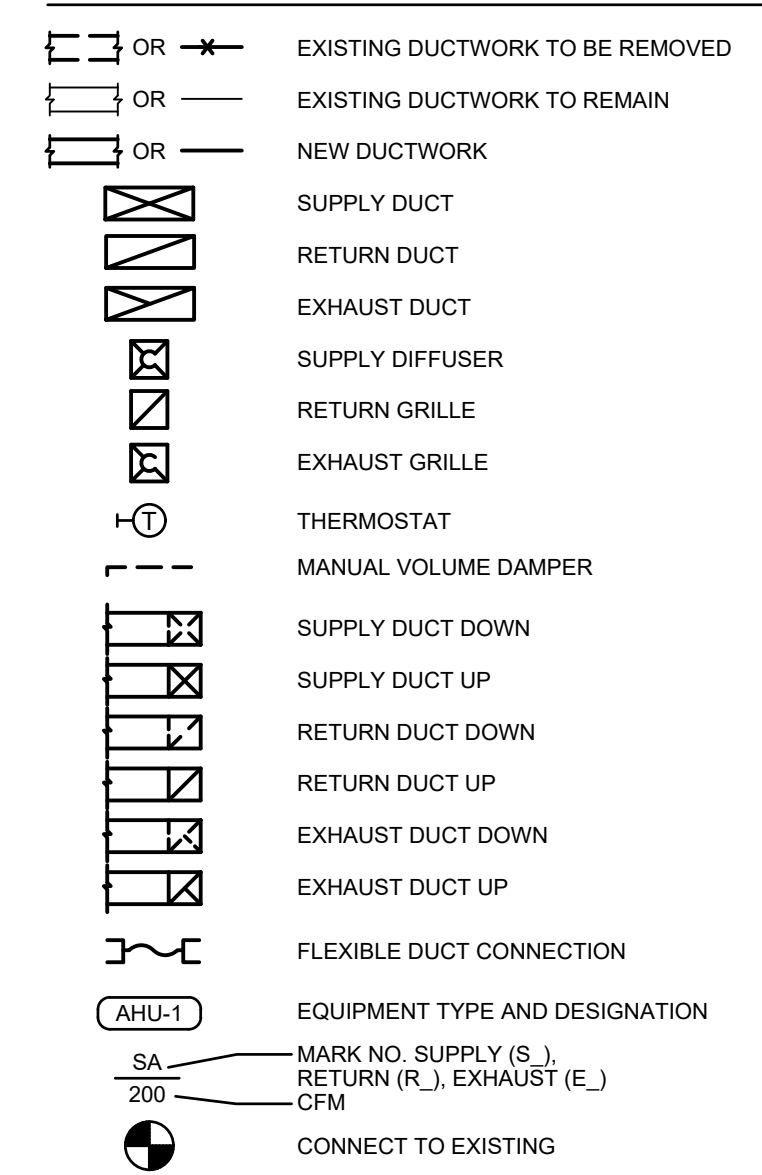
MARK NO.	MANUFACTURER	MODEL	TYPE	AIRFLOW (CFM)	HEATING (ELEC)		ELECTRICAL			NOTES
					OUTPUT (MBH)	INPUT (KW)	VOLT	ø	HZ	
UH-1	QMARK	CDF-558	CEILING	300	17.1	5	208	3	60	ALL

NOTES:
 1. PROVIDE WITH INTEGRAL THERMOSTAT, DISCONNECT SWITCH, AND CEILING TRIM RING.
 2. FIELD CONVERT HEATER TO 3 PHASE.
 *HEATING KW IS NET CAPACITY AT VOLTAGE AND PHASE INDICATED.

GENERAL NOTES (TYPICAL ALL SHEETS)

- A. MECHANICAL CONTRACTOR IS RESPONSIBLE TO SEE THAT WORK MEETS AND IS IN ACCORDANCE WITH ALL REQUIREMENTS OF FEDERAL, STATE, AND LOCAL LAWS AND CODES AND/OR REQUIREMENTS, INCLUDING HEALTH CODES AND BUILDING OWNER.
- B. CUTTING AND PATCHING OF FLOORS, WALLS, CEILING, ETC., REQUIRED IN STRICT ACCORDANCE WITH THE RULES AND REGULATIONS OF THE ARCHITECT'S AND/OR BUILDING OWNER REQUIREMENTS.
- C. COORDINATE ALL WORK WITH OTHER TRADES PRIOR TO INSTALLATION TO AVOID ROUTING CONFLICTS.
- D. ANY MATERIAL REMOVED THAT OWNER DOES NOT WISH TO RETAIN SHALL BE REMOVED FROM PROJECT SITE AND DISPOSED OF BY CONTRACTOR.
- E. MECHANICAL CONTRACTOR SHALL AIR BALANCE ALL GRILLES TO CFMS SHOWN ON PLANS.
- F. MECHANICAL CONTRACTOR SHALL PROVIDE NEW 1" FARR TYPE PLEATED FILTERS ON ALL ROOFTOP UNITS WHICH ARE IN PROJECT SCOPE OF WORK PRIOR TO BALANCING. PROVIDE TEMPORARY FILTERS ON RETURN AIR OPENINGS DURING CONSTRUCTION.
- G. UPON REQUEST FOR ELECTRONIC FILES, CONTRACTOR SHALL FILL OUT, SIGN AND RETURN ELECTRONIC MEDIA RELEASE FORM FROM ENGINEER AND PROVIDE PAYMENT FOR FEES STIPULATED ON ELECTRONIC MEDIA RELEASE FORM. UPON RECEIPT OF COMPLETED RELEASE FORM AND PAYMENT, ELECTRONIC FILES WILL BE RELEASED.
- H. REPLACE EXISTING THERMOSTATS/SENSORS WITH NEW. THERMOSTAT COVERS SHALL BE WHITE IN COLOR UNLESS OTHERWISE NOTED. THERMOSTATS/SENSORS SHALL BE INSTALLED AND CALIBRATED PRIOR TO TEST AND BALANCE. INTEGRATE NEW DIGITAL THERMOSTATS/SENSORS INTO THE EXISTING BUILDING ENERGY MANAGEMENT SYSTEM AS REQUIRED.

MECHANICAL SYMBOLS



Dev Anand
President & CEO

Kevin Campbell
Senior Architect

8807 Monrovia Street
Lenexa, Kansas 66215

Phone: 913.322.8882
Fax: 913.322.8886
Email: kevin@dev-inc.com

THIS DRAWING has been prepared by the Architect, or prepared under his direct supervision as an instrument of service and is intended for use only on this project. All Drawings, Specifications, Ideas and designs, including the overall layout, form, arrangement, and composition of space and elements portrayed, constitute the original, unpublished work of the Architect. Any reproduction, use, or disclosure of the information contained herein without the written consent of the Architect is strictly prohibited.

COMPLY WITH all laws, codes, ordinances and regulations with authorities having jurisdiction and with requirements of the Landlord, if applicable. Do not start work until all permits and required approvals are obtained.



A TENANT FINISH FOR:
LAKWOOD ORTHODONTICS
 1399 NE DOUGLAS ST
 LEE'S SUMMIT, MO 64086



PROJECT NO. 210407
DRAWING ISSUANCE

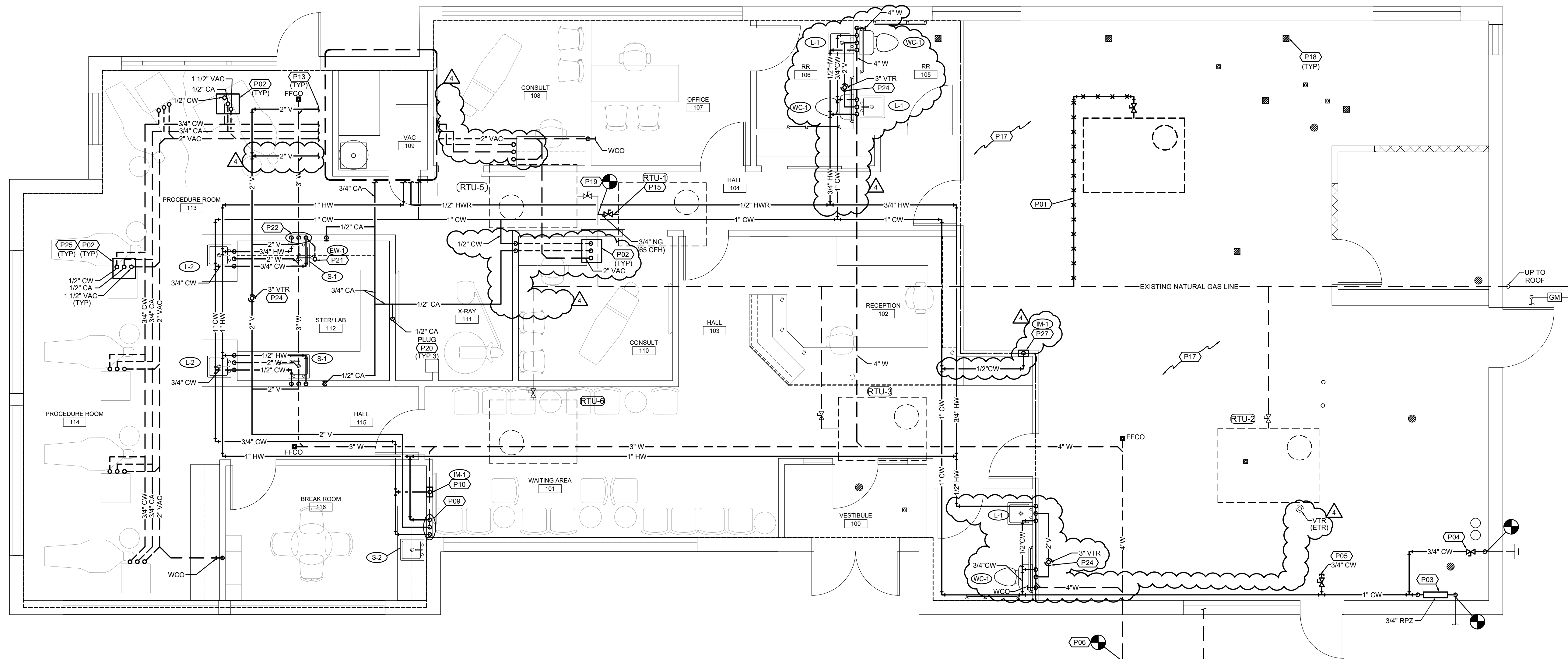
08/13/2021 PERMIT
09/03/2021 REV 01
10/02/2021 REV 03
01/19/2022 REV 04



SHEET NUMBER
M2.0
MECHANICAL
DETAILS

THIS DRAWING has been prepared by the Architect, or prepared under his direct supervision as an instrument of service and is intended for use only on this project. All Drawings, Specifications, Ideas and designs, including the overall layout, form, arrangement, and composition of spaces and elements portrayed, constitute the original, unpublished work of the Architect. Any reproduction, use, or disclosure of the information contained herein without the written consent of the Architect is strictly prohibited.

COMPLY WITH all laws, codes, ordinances and regulations with authorities having jurisdiction and with requirements of the Landlord, if applicable. Do not start work until all permits and required approvals are obtained.

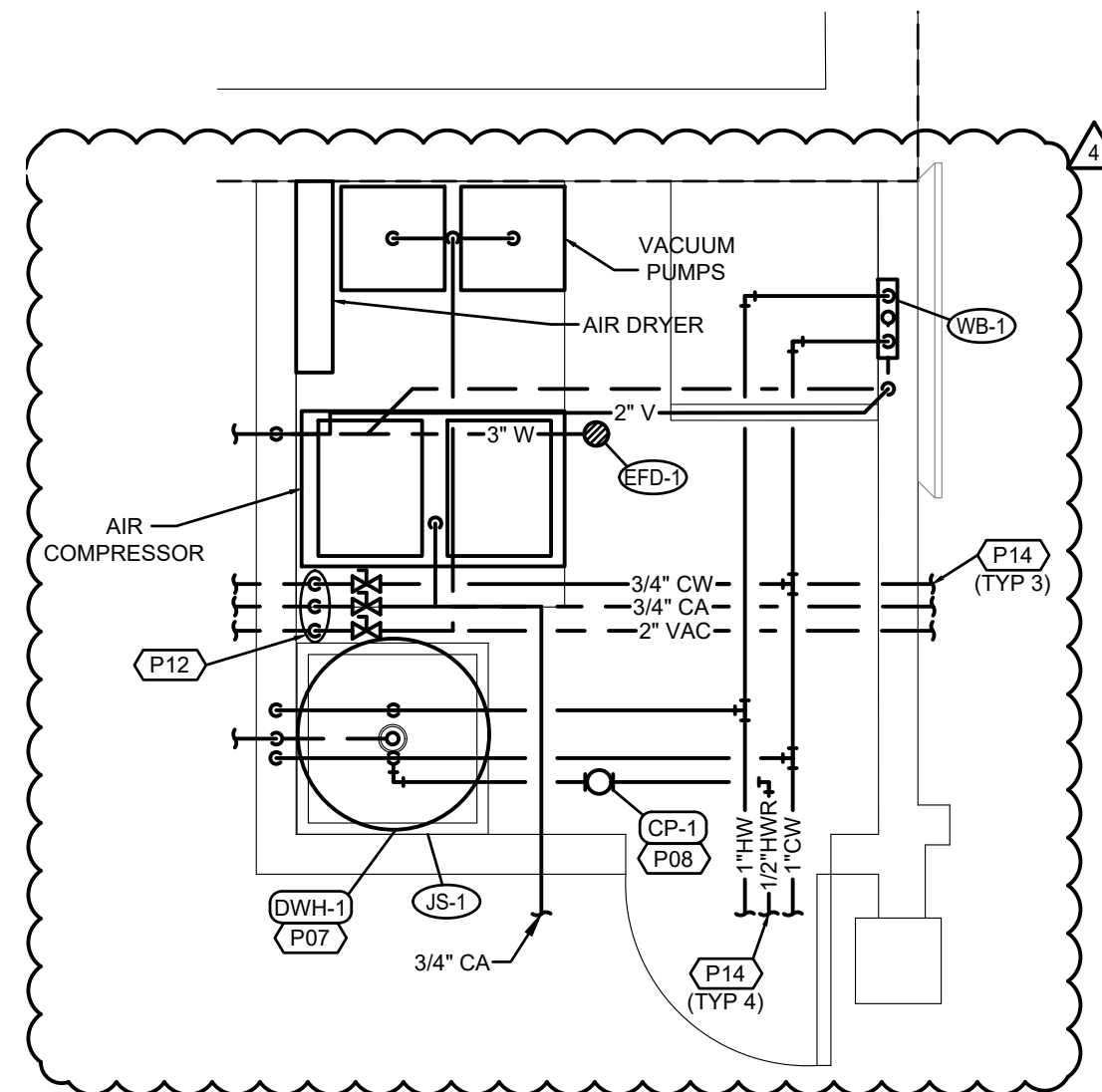


FLOOR PLAN-PLUMBING

SCALE: 1/4"=1'-0"

FLOOR PLAN NOTES

- EXISTING INACTIVE NG PIPING TO BE REMOVED AND CAPPED BACK TO MAIN.
- TERMINAL BOX BY OTHERS. PROVIDE ACCESSORIES AND SHUT-OFF VALVES FOR CHAIR CONNECTIONS. MAKE FINAL CONNECTIONS TO EQUIPMENT. COORDINATE TERMINAL BOX LOCATIONS WITH OWNER AND GENERAL CONTRACTOR PRIOR TO CONSTRUCTION.
- PROVIDE NEW 1" RPZ BACKFLOW PREVENTER, WATTS 009 OR EQUIVALENT. INSTALL PER MANUFACTURER'S REQUIREMENTS. PROVIDE DRAIN LINE FROM BACKFLOW PREVENTER TO NEAREST FLOOR DRAIN. RE: DETAIL.
- CONNECT TO EXISTING WALL HYDRANT. PROVIDE ACCESSIBLE SHUT-OFF VALVE.
- PROVIDE 3/4" CW STUB-OUT FOR FUTURE TENANT.
- CONNECT TO NEAREST EXISTING WASTE PIPING OF EQUAL OR GREATER SIZE. CONTRACTOR TO FIELD VERIFY EXACT SIZE, LOCATION AND ELEVATION OF EXISTING PIPING PRIOR TO CONSTRUCTION.
- PROVIDE NEW ELECTRIC WATER HEATER MOUNTED FROM ABOVE CEILING. INSTALL PER MANUFACTURER'S REQUIREMENTS. PROVIDE FULL SIZED DRAIN LINES FROM DRAIN PAN AND TRAP RELIEF VALVE TO HOP SINK AND INDIRECT WASTE. RE: DETAIL.
- PROVIDE HOT WATER REHEATING UNIT SUSPENDED FROM STRUCTURE. UTILIZING ALL THREAD RODS. INSTALL PER MANUFACTURER'S REQUIREMENTS.
- 1/2" CW AND HW DOWN IN WALL TO SINK FAUCET. 2" W DOWN, 1 1/2" V UP. ROUTE PIPING UNDER CABINET TO FIXTURE.
- 1/2" CW DOWN IN WALL TO ICE-MAKER BOX.
- PROVIDE ACCESSIBLE SHUT-OFF VALVES FOR CW, CA AND VAC.
- 3/4" CW, 3/4" CA AND 2" VAC DOWN. ROUTE CW, CA AND VAC PIPING UNDERGROUND AS SHOWN ON FLOOR PLAN.
- REFER TO ENLARGEMENT FOR CONTINUATION.
- REFER TO OVERALL PLAN FOR CONTINUATION.
- CONNECT 3/4" NG TO ROOF TOP UNIT WITH GAS COCK, DIRT LEG AND UNION.
- EXISTING FLOOR DRAINS/SINKS TO BE PLUGGED.
- EXISTING INACTIVE NG PIPING FROM KITCHEN EQUIPMENT TO BE REMOVED AND CAPPED BACK TO MAIN SOURCE.
- EXISTING GREASE INTERCEPTOR AND ALL ASSOCIATED APPURTENANCES TO BE REMOVED. CAP ALL PIPING CONNECTIONS WATER TIGHT.
- CONNECT TO NEAREST EXISTING NATURAL GAS PIPING OF EQUAL OR GREATER SIZE. CONTRACTOR TO FIELD VERIFY EXACT SIZE, LOCATION AND ELEVATION OF EXISTING PIPING PRIOR TO CONSTRUCTION.
- COORDINATE FINAL LOCATION OF CA PLUG WITH OWNER PRIOR TO CONSTRUCTION.
- 1/2" CW TO EMERGENCY EYE WASH. ROUTE PIPING UNDER COUNTER. COORDINATE FINAL LOCATION OF EMERGENCY EYE WASH WITH OWNER PRIOR TO CONSTRUCTION.
- 3/4" CW AND 3/4" HW DOWN IN WALL. ROUTE 1/2" CW AND HW TO SINK FAUCET AND 1/2" CW AND HW TO EMERGENCY EYE WASH. 2" W DOWN, 1 1/2" V UP.
- CONNECT TO NEAREST EXISTING VENT THRU ROOF PIPING OF EQUAL OR GREATER SIZE. CONTRACTOR TO FIELD VERIFY EXACT SIZE, LOCATION AND ELEVATION OF PIPING.
- KEEP VENT THRU ROOF 10' MINIMUM FROM FRESH AIR INTAKES.
- PROVIDE WATTS MODEL LF288A-1/2" LEAD FREE ANTI-SIPHON VACUUM BREAKER CONFORMING WITH ANSI A112.1.1, ASSE 1001, AND CSA 566.
- 3/4" CW AND HW DOWN IN WALL. ROUTE 1/2" CW AND HW TO SINK FAUCET AND 1/2" CW TO WATER CLOSET.
- 1/2" DOWN IN WALL TO ICE-MAKER BOX. ROUTE 1/2" CW TO COFFEE MAKER. PROVIDE ACCESSIBLE DOUBLE CHECK VALVE AND DEDICATED SHUT-OFF VALVE. MAKE FINAL CONNECTION TO APPLIANCE.



VAC ROOM ENLARGEMENT

SCALE: 1/2"=1'-0"

PLUMBING PUMP SCHEDULE

MARK NO.	MANUFACTURER	MODEL	USE	TYPE	FLOW (GPM)	HEAD (FT.)	RPM	ELECTRICAL				NOTES
								VOLT	Ø	HZ	HP	
CR-1	BELL & GOSSETT	PL30B	RECIRC	IN-LINE	1	15	2450	120	1	60	1/12	1

NOTES: 1. PROVIDE WITH A QUASTAT AND AUTOMATIC TIMER KIT.

PLUMBING FIXTURE SCHEDULE

MARK NO.	FIXTURE TYPE	MANUFACTURER	MODEL NO.	DESCRIPTION	MINIMUM CONNECTION SIZE			
					CW	HW	WASTE	VENT
WC-1	WATER CLOSET (ADA)	AMERICAN-STANDARD	215AA.004 "CADET PRO"	FLOOR MOUNTED FLUSH TANK, WHITE VITREOUS CHINA, HIGH EFFICIENCY (1.6 GPF), ELONGATED POWER WASH BOWL, FULLY GLAZED 2" TRAP WAY, CLOSE-COUPLED TANK, 16-1/2" RM HEIGHT. ACCESSORIES: CHROME BRASS FRONT SEAT LESS COVER WITH SELF SUSTAINING CHECK HINGES, BOLTS AND CAPS, LOOSE KEY ANGLE STOP AND CHROME PLATED RISER. NOTE: HANDLE TO BE ON WIDE SIDE OF FIXTURE.	1/2"	-	4"	2"
L-1	LAVATORY (ADA)	AMERICAN-STANDARD	0356.421 "LUCERNE"	VITREOUS CHINA, 20" X 16", FRONT OVERFLOW, INTEGRAL BACK CHICAGO FAUCETS MODEL 2200-E2805A 90° DECK MOUNTED, SINGLE HOLE CERAMIC DISC MIXING FAUCET WITH 4-3/4" SPOUT WITH SINGLE LEVER HANDLE AND VANDAL RESISTANT NON-ABRATING OUTLET (0.5 GPM). ACCESSORIES: PROVIDE LEONARD 170-LF LEAD FREE BRONZE THERMOSTATIC MIXING VALVE WITH 0.25 GPM MINIMUM FLOW RATE, INTEGRAL CHECK VALVES, DISCHARGE SET AT 105 F, MOUNTED DOWNSTREAM OF FIXTURE STOPS, WITH HOT AND COLD WATER PIPED TO VALVE, TEMPERED AND COLD WATER TO LAVATORY. CHICAGO FAUCETS MODEL 327-XCP GRID DRAIN, 1-1/4" X 1-1/2" 17 GA. SEMI-CAST BRASS P-TRAP WITH CLEANOUT, CHROME-PLATED RISERS WITH LOOSE KEY ANGLE STOPS AND J.R. SMITH CONCEALED ARM LAVATORY SUPPORT. PROVIDE WITH FULLY MOLDED FLEXIBLE VINYL INSULATION KIT COVER TRAP, SUPPLIES AND STOPS, TRUBRO E-Z LAV GUARD. NOTE: MOUNT FIXTURE RM 3/4" ABOVE FINISHED FLOOR.	1/2"	1/2"	1-1/2"	1-1/2"
L-2	LAVATORY (ADA)	AMERICAN-STANDARD	475.047 "AQUALYN"	COUNTERTOP, VITREOUS CHINA, 20" X 17" OVAL FRONT OVERFLOW, SELF-RIMMING. CHICAGO FAUCETS MODEL 2200-E2805A 90° DECK MOUNTED, SINGLE HOLE CERAMIC DISC MIXING FAUCET WITH 4-3/4" SPOUT WITH SINGLE LEVER HANDLE AND VANDAL RESISTANT NON-ABRATING OUTLET (0.5 GPM). ACCESSORIES: PROVIDE LEONARD 170-LF LEAD FREE BRONZE THERMOSTATIC MIXING VALVE WITH 0.25 GPM MINIMUM FLOW RATE, INTEGRAL CHECK VALVES, DISCHARGE SET AT 105 F, MOUNTED DOWNSTREAM OF FIXTURE STOPS, WITH HOT AND COLD WATER PIPED TO VALVE, TEMPERED AND COLD WATER TO LAVATORY. CHICAGO FAUCETS MODEL 327-XCP GRID DRAIN, 1-1/4" X 1-1/2" 17 GA. SEMI-CAST BRASS P-TRAP WITH CLEANOUT AND CHROME-PLATED RISERS WITH LOOSE KEY ANGLE STOPS. PROVIDE WITH FULLY MOLDED FLEXIBLE VINYL INSULATION KIT TO COVER TRAP, SUPPLIES AND STOPS, TRUBRO E-Z LAV GUARD.	1/2"	1/2"	1-1/2"	1-1/2"
S-1	SINK	ELKAY	LR1722PD	SINGLE COMPARTMENT SELF RIMMING SINK, 18 GA, TYPE 304 STAINLESS STEEL, 7-5/8" DEEP BOWL. MOEN MODEL 87039 DECK MOUNTED FAUCET WITH 1255 DURALAST CARTRIDGE, SINGLE LEVER HANDLE, SINGLE HOLE MOUNTING WITH OPTIONAL DECK PLATE, AERATOR LIMITED TO 1.5 MAX. GPM, 120° SPOUT ROTATION, FULLOUT SPRAY WITH 8' BRAIDED HOSE. ACCESSORIES: ELKAY LK-35 STRAINER WITH 1-1/2" TALL REE, 1-1/2" 17 GA. SEMI-CAST BRASS P-TRAP WITH CLEANOUT, CHROME-PLATED RISERS WITH LOOSE KEY ANGLE STOPS.	1/2"	1/2"	2"	1-1/2"
S-2	SINK	ELKAY	LRAD-1918	SINGLE COMPARTMENT SELF RIMMING SINK, 18 GA, TYPE 304 STAINLESS STEEL, 6-1/2" DEEP BOWL. DELTA MODEL 9913-DST ESSA DECK MOUNTED FAUCET WITH CERAMIC OPERATING CARTRIDGE, SINGLE LEVER HANDLE, 2 FUNCTION FULL DOWN 8-5/8 SWING SPOUT WITH MAGNETIC DOCKING, DUAL CHECK AND 1.8 GPM AERATOR, 1 OR 3 HOLE MOUNTING WITH OPTIONAL DECK PLATE. ACCESSORIES: ELKAY LK-35 STRAINER WITH 1-1/2" TALL REE, 1-1/2" 17 GA. SEMI-CAST BRASS P-TRAP WITH CLEANOUT, CHROME-PLATED RISERS WITH LOOSE KEY ANGLE STOPS.	1/2"	1/2"	2"	1-1/2"
IM-1	ICE MAKER WALL BOX	SIOUX CHEF	696-G1000 SERIES	RECESSED ICE MAKER WALL BOX WITH QUARTER TURN VALVE AND 1/2" INLET, ABS COVER.	1/2"	-	-	-
EFD-1	EQUIPMENT FLOOR DRAIN	J.R. SMITH	2210Y	MEDIUM CAPACITY, MEDIUM DUTY DUCO CAST IRON BODY, SEDIMENT BUCKET AND GRATE, NO HUB OUTLET. PROVIDE WITH 3591 OVAL FUNNEL, WHERE DRAIN RECEIVES INDIRECT WASTE AND TRAP PRIMER CONNECTION.	-	-	3"	1-1/2"
EW-1	EYE WASH	GUARDIAN	G1805	DECK MOUNTED SWIVEL ACTIVATED EYE WASH WITH DUAL SPRAY HEADS AND DUST COVERS, RIGHT HAND MOUNTING, EMERGENCY SIGNAGE. ACCESSORIES: PROVIDE WITH 1/2" INLET VALVE AND STRAINER, 0620 THERMOSTATIC MIXING VALVE WITH STOP VALVES ON SUPPLIES, 13 GPM CAPACITY.	1/2"	-	-	-
WB-1	WASHER WALL BOX	SIOUX CHEF	696-2313 SERIES	RECESSED SUPPLY AND DRAIN WALL BOXES WITH QUARTER TURN VALVES, MINI SHOCK ARRESTORS, SWEAT WATER CONNECTIONS, 2" DRAIN, ABS COVERS.	1/2"	1/2"	2"	1-1/2"
JS-1	JANITOR SINK	STERN-WILLIAMS	MTB-2424	SIZE 24" X 24" X 10", TERRAZZO SERVICE SINK WITH CAST BRASS DRAIN, STAINLESS STEEL STRAINER, 3" DRAIN CONNECTION. CHICAGO FAUCETS MODEL 897-0CP WITH QUARTER OPERATING CARTRIDGE, VACUUM BREAKER SPOUT WITH PULL HOOK AND WALL BRACE, 3/4" MALE HOSE THREAD OUTLET, 369 LEVER HANDLES, FLANGED ADJUSTABLE SUPPLY ARM AND INTEGRAL SUPPLY STOPS AND CHECK VALVES. ACCESSORIES: V-70 EXTRUDED VINYL BUMPER GUARDS ON EXPOSED SIDES, T-35 36" RUBBER HOSE WITH STAINLESS STEEL WALL BRACKET.	1/2"	1/2"	3"	2"

WATER HEATER SCHEDULE (ELECTRIC)

MARK NO.	MANUFACTURER	MODEL NO.	TANK LINING	TANK CAPACITY (GALL)	RECOVERY (GPM @ 80 F)	INPUT (KW)	THERMAL EXPANSION TANK MODEL NO.	ELECTRICAL				NOTES
								VOLT	Ø	HZ	HP	
DWH-1	A.O. SMITH	DEL-40	GLASS	40	23	4.5	PLT-12	208	1	60	1.2	

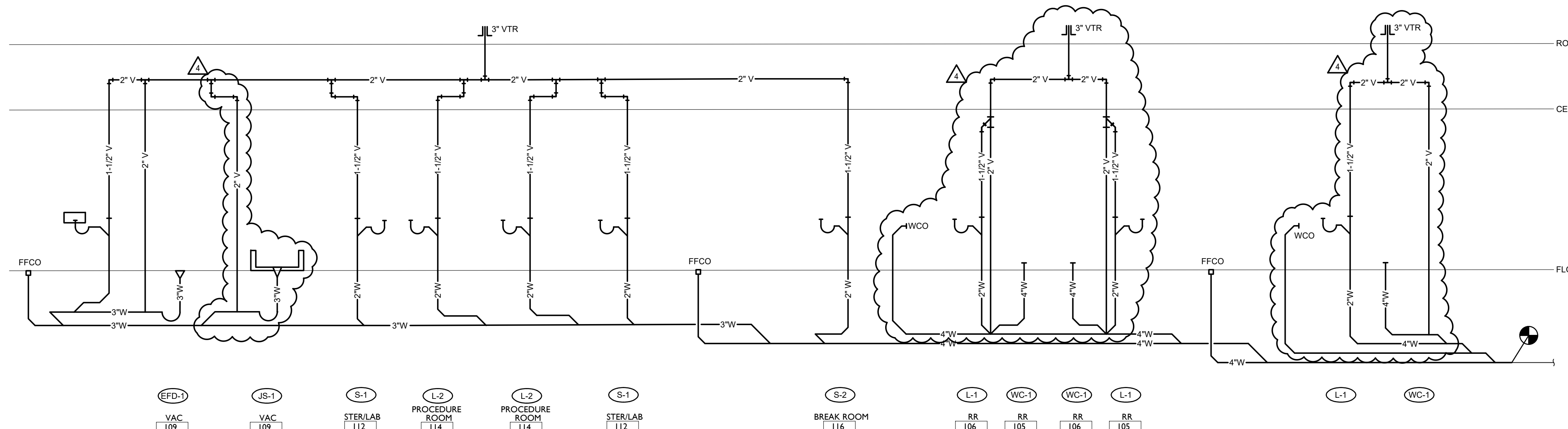
NOTES: 1. PROVIDE WITH TEMPERATURE AND PRESSURE RELIEF VALVE AND DRAIN.
2. PROVIDE WITH CONTROL THERMAL EXPANSION TANK, WATTS MODEL SCHEDULED WITH WATTS SCV SERVICE CHECK VALVE.
*HEATING KW IS NET CAPACITY AT VOLTAGE AND PHASE INDICATED.

GENERAL NOTES (TYPICAL ALL SHEETS)

- PLUMBING CONTRACTOR IS RESPONSIBLE TO SEE THAT WORK MEETS AND IS IN ACCORDANCE WITH ALL REQUIREMENTS OF FEDERAL, STATE, AND LOCAL LAWS AND CODES AND/OR REQUIREMENTS, INCLUDING HEALTH CODES AND BUILDING OWNER.
- ALL EXISTING PIPING SHOWN ON DRAWINGS IS SCHEMATIC AND IS BASED ON EXISTING RECORD DRAWINGS PROVIDED BY THE OWNER AND DO NOT REFLECT EXACT EXISTING CONDITIONS. CONTRACTOR TO FIELD VERIFY EXACT DEPTH AND/OR LOCATIONS ON JOB SITE. CONTRACTOR SHALL REROUTE NEW WORK TO ACCOMMODATE EXACT LOCATIONS OF EXISTING UTILITIES, STUBOUTS AND/OR CONNECTIONS.
- CUTTING AND PATCHING OF FLOORS, WALLS, CEILING, ETC., REQUIRED IN STRICT ACCORDANCE WITH THE RULES AND REGULATIONS OF THE ARCHITECT'S AND/OR BUILDING OWNER REQUIREMENTS.
- COORDINATE ALL WORK WITH OTHER TRADES PRIOR TO INSTALLATION TO AVOID ROUTING CONFLICTS.
- ANY MATERIAL REMOVED THAT OWNER DOES NOT WISH TO RETAIN SHALL BE REMOVED FROM PROJECT SITE AND DISPOSED OF BY CONTRACTOR.
- INSTALL ELASTOMERIC JOINT SEALER AROUND ALL PIPES PASSING THRU INTERIOR NON-RATED CONCRETE AND MASONRY WALLS, GYPSUM-BOARD PARTITIONS, AND CONCRETE FLOOR/ROOF SLABS. FOR FIRE RATED INTERIOR CONCRETE AND MASONRY WALLS, GYPSUM-BOARD PARTITIONS, AND CONCRETE FLOOR/ROOF SLABS SEAL ALL PIPES. INSTALL FIRESTOP MATERIALS IN ALL GAPS PRIOR TO SEALANT APPLICATION. INSTALL SEALER ACCORDING TO MANUFACTURER'S WRITTEN INSTRUCTIONS.
- PLUMBING CONTRACTOR SHALL MAKE FINAL CONNECTION TO ALL EQUIPMENT BY OTHERS. VERIFY CONNECTIONS SIZES AND REQUIREMENTS.
- PIPING ROUTED BELOW COUNTER IN CABINETS SHALL BE ROUTED AS NOTED. NOT TO INTERFERE WITH DRAWERS, SHELVES, EQUIPMENT, ETC., AND SUPPORT FROM BACK WALL OF CABINET.
- PLUMBING CONTRACTOR SHALL SCAN FLOOR UTILIZING GROUND PENETRATING RADAR PRIOR TO ANY CORE DRILLING OR SAW CUTTING OF SLAB AND SHALL VERIFY PLACEMENT WITH BUILDING OWNER'S REPRESENTATIVE PRIOR TO DRILLING.
- PLUMBING CONTRACTOR SHALL PROVIDE PRO-SET SYSTEMS 'TRAP GUARD' IN ALL FLOOR DRAIN TRAPS WITHIN PROJECT SCOPE OF WORK.
- UPON REQUEST FOR ELECTRONIC FILES, CONTRACTOR SHALL FILL OUT, SIGN AND RETURN ELECTRONIC MEDIA RELEASE FORM FROM ENGINEER AND PROVIDE PAYMENT FOR FEES STIPULATED ON ELECTRONIC MEDIA RELEASE FORM. UPON RECEIPT OF COMPLETED RELEASE FORM AND PAYMENT, ELECTRONIC FILES WILL BE RELEASED.
- ALL CABLE TIES FOR LOW VOLTAGE SYSTEMS LOCATED IN PLENUMS UTILIZED FOR AIR MOVEMENT THAT ARE NOT INSTALLED IN CONDUIT SHALL BE 25/50 FLAME AND SMOKE RATED, HELLERMANN TYTON T50 RC2UL OR EQUIVALENT.

PLUMBING SYMBOLS

	EXISTING TO REMAIN
	EXISTING TO BE REMOVED
	NEW PIPING
	COLD WATER
	HOT WATER
	HOT WATER RETURN
	NATURAL GAS
	COMPRESSED AIR
	SANITARY VENT ABOVE GROUND FLOOR
	SANITARY VENT BELOW GROUND FLOOR
	SANITARY WASTE ABOVE GROUND FLOOR
	SANITARY WASTE BELOW GROUND FLOOR
	VACUUM
	BALANCE VALVE
	GAS SHUT-OFF COCK
	SHUT OFF VALVE
	IN-LINE PUMP
	FLOOR DRAIN OR EQMT FLOOR DRAIN
	PIPE DROP/PIPE RISE
	BOTTOM OUTLET TEE
	WALL CLEAN OUT
	FINISHED FLOOR CLEANOUT
	SANITARY VENT THROUGH ROOF
	EQUIPMENT TYPE AND DESIGNATION
	PLUMBING FIXTURE DESIGNATION
	EXISTING TO REMAIN
	CONNECT TO EXISTING



WASTE AND VENT RISER DIAGRAM
NO SCALE



Dev Anand
President & CEO

Kevin Campbell
Senior Architect

8807 Monrovia Street
Lenexa, Kansas 66215

Phone: 913.322.8882
Fax: 913.322.8886
Email: kevin@dev-inc.com

THIS DRAWING has been prepared by the Architect, or prepared under his direct supervision as an instrument of service and is intended for use only on this project. All Drawings, Specifications, Ideas and designs, including the overall layout, form, arrangement, and composition of space and elements portrayed, constitute the original, unpublished work of the Architect. Any reproduction, use, or disclosure of the information contained herein without the written consent of the Architect is strictly prohibited.

OWNER: Bill of law, codes, ordinances and regulations with authority having jurisdiction and with requirements of the Landlord, if applicable. Do not start work until all permits and required approvals are obtained.



A TENANT FINISH FOR:

LAKWOOD ORTHODONTICS

1399 NE DOUGLAS ST
LEE'S SUMMIT, MO 64086



PROJECT NO. 210407
DRAWING ISSUANCE

08/13/2021	REV 01	PERMIT
09/03/2021	REV 02	REV 01
10/05/2021	REV 03	REV 02
01/19/2022	REV 04	REV 03

Lankford + Fendler
+ associates

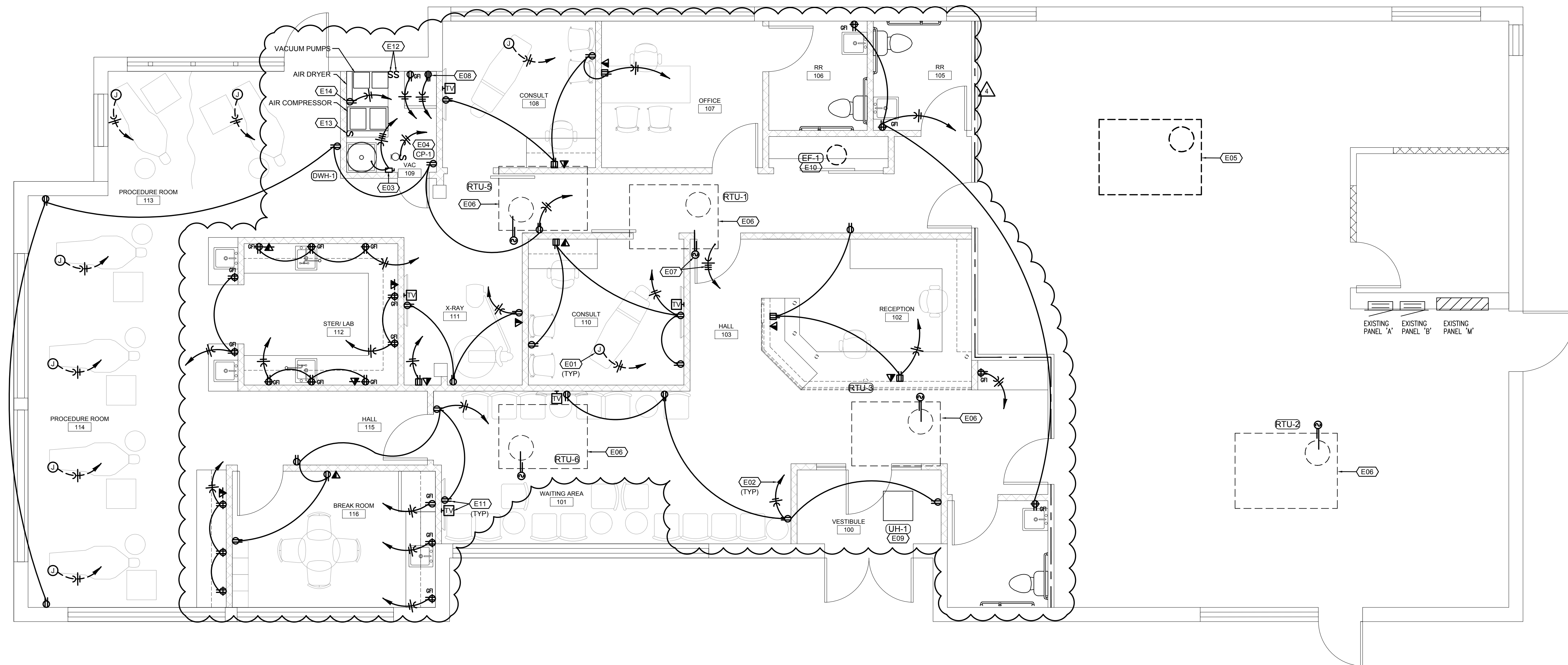
1730 Walnut Street Kansas City, Missouri 64108
1915 Frederick Avenue, St. Joseph, Missouri 64501

Phone: 816.221.1411 | Fax: 816.221.1429
LANKFORD | FENDLER + ASSOCIATES, CONSULTING ENGINEERS, INC.
COPYRIGHT © 2021 Project No. 21-6555-00
CGA No. 2006001168

SHEET NUMBER
P2.1
PLUMBING SCHEDULES,
NOTES, AND SYMBOLS

THIS DRAWING has been prepared by the Architect, or prepared under his direct supervision as an instrument of service and is intended for use only on this project. All Drawings, Specifications, Ideas and designs, including the overall layout, form, arrangement, and composition of space and elements portrayed, constitute the original, unpublished work of the Architect. Any reproduction, use, or disclosure of the information contained herein without the written consent of the Architect is strictly prohibited.

COMPLY WITH all laws, codes, ordinances and regulations with authorities having jurisdiction and with requirements of the Landlord, if applicable. Do not start work until all permits and required approvals are obtained.



FLOOR PLAN-POWER N
SCALE: 1/4"=1'-0"

GENERAL NOTES POWER

- A. ALL PATIENT CARE AREAS UTILIZING MC CABLE SHALL USE HCFMC TYPE MC CABLE AND SHALL MEET GROUNDING REQUIREMENTS OF NEC ARTICLE 517.13. WHERE MC CABLE IS USED, THE METAL SHEATHING SHALL BE LISTED AS AN ACCEPTABLE GROUNDING PATH.
- B. RECEPTACLES INSTALLED WITHIN ANY PATIENT CARE AREAS SHALL BE TAMPER RESISTANT, HOSPITAL GRADE 120 VOLT, 20 AMP DUPLEX TYPE.

FLOOR PLAN NOTES

1. MAKE 120 VOLT, 20 AMP POWER CONNECTION TO DENTAL CHAIR. PROVIDE FLOOR BOX WITH DUPLEX RECEPTACLE AND DATA OUTLET AS REQUIRED. COORDINATE EXACT LOCATION WITH DENTAL CHAIR INSTALLER.
2. HOMERUN TO EXISTING 120/208 VOLT PANEL 'A' AND TERMINATE ON A 20A/1P BREAKER.
3. PROVIDE A 30A/3P, NON-FUSED DISCONNECT IN A NEMA 1 ENCLOSURE AND MAKE CONNECTION TO WATER HEATER. HOMERUN TO EXISTING PANEL 'A' AND TERMINATE ON A NEW 20A/3P BREAKER.
4. PROVIDE A 20A/1P TOGGLE SWITCH FOR DISCONNECTING MEANS AND MAKE CONNECTION TO PUMP. HOMERUN TO EXISTING PANEL 'A' AND TERMINATE ON A 20A/1P BREAKER.
5. EXISTING ROOFTOP UNIT TO BE REMOVED. REMOVE ALL ASSOCIATED WIRING AND CONDUIT BACK TO SOURCE.
6. EXISTING ROOFTOP UNIT TO REMAIN. PROVIDE NEW DUCT DETECTOR IN RETURN AIR DUCT. INTERLOCK WITH FAN FOR SHUTDOWN OF UNIT UPON DETECTION OF SMOKE. PROVIDE KEYED RESET AN ALARM IN CEILING BELOW UNIT.
7. MAKE POWER CONNECTION TO NEW ROOFTOP UNIT. HOMERUN TO EXISTING PANEL 'A' AND TERMINATE ON A 20A/3P BREAKER. PROVIDE NEW DUCT DETECTOR IN RETURN AIR DUCT. INTERLOCK WITH FAN FOR SHUTDOWN OF UNIT UPON DETECTION OF SMOKE. PROVIDE KEYED RESET AN ALARM IN CEILING BELOW UNIT.
8. PROVIDE 30A, 250 VOLT RECEPTACLE FOR DRYER. COORDINATE EXACT RECEPTACLE TYPE WITH DRYER PLUG. HOMERUN TO PANEL 'A' AND TERMINATE ON A NEW 30A/2P BREAKER.
9. MAKE POWER CONNECTION TO NEW UNIT HEATER. HOMERUN TO EXISTING PANEL 'A' AND TERMINATE ON A 20A/3P BREAKER.
10. MAKE POWER CONNECTION TO NEW ROOF MOUNTED EXHAUST FAN. HOMERUN TO EXISTING PANEL 'A' AND TERMINATE ON A 20A/1P BREAKER.
11. COORDINATE ROUGH-IN FOR TELEVISION WITH TELEVISION MOUNTING BRACKET.
12. PROVIDE 20A/2P MOTOR RATED TOGGLE SWITCH FOR DISCONNECTING MEANS TO VACUUM PUMPS. HOMERUN A DEDICATED 20A/240V CIRCUIT FROM EACH PUMP TO PANEL 'A' AND TERMINATE ON A 20A/2P BREAKER.
13. PROVIDE 20A/2P MOTOR RATED TOGGLE SWITCH FOR DISCONNECTING MEANS TO AIR COMPRESSOR. HOMERUN A DEDICATED 20A/240V CIRCUIT FROM AIR COMPRESSOR TO PANEL 'A' AND TERMINATE ON A 20A/2P BREAKER.
14. COORDINATE MOUNTING HEIGHT OF RECEPTACLE FOR AIR DRYER WITH LOCATION OF AIR DRYER CONTROL PANEL.



Dev Anand
President & CEO

Kevin Campbell
Senior Architect

8807 Monrovia Street
Lenexa, Kansas 66215

Phone: 913.322.8892
Fax: 913.322.8886
Email: kevin@dev-inc.com

THIS DRAWING has been prepared by the Architect, or prepared under his direct supervision as an instrument of service and is intended for use only on this project. All Drawings, Specifications, Ideas and designs, including the overall layout, form, arrangement, and composition of spaces and elements portrayed, constitute the original, unpublished work of the Architect. Any reproduction, use, or disclosure of the information contained herein without the written consent of the Architect is strictly prohibited.

COMPLY WITH all laws, codes, ordinances and regulations with authorities having jurisdiction and with requirements of the Landlord, if applicable. Do not start work until all permits and required approvals are obtained.



A TENANT FINISH FOR:
LAKWOOD ORTHODONTICS

1399 NE DOUGLAS ST
LEE'S SUMMIT, MO 64086

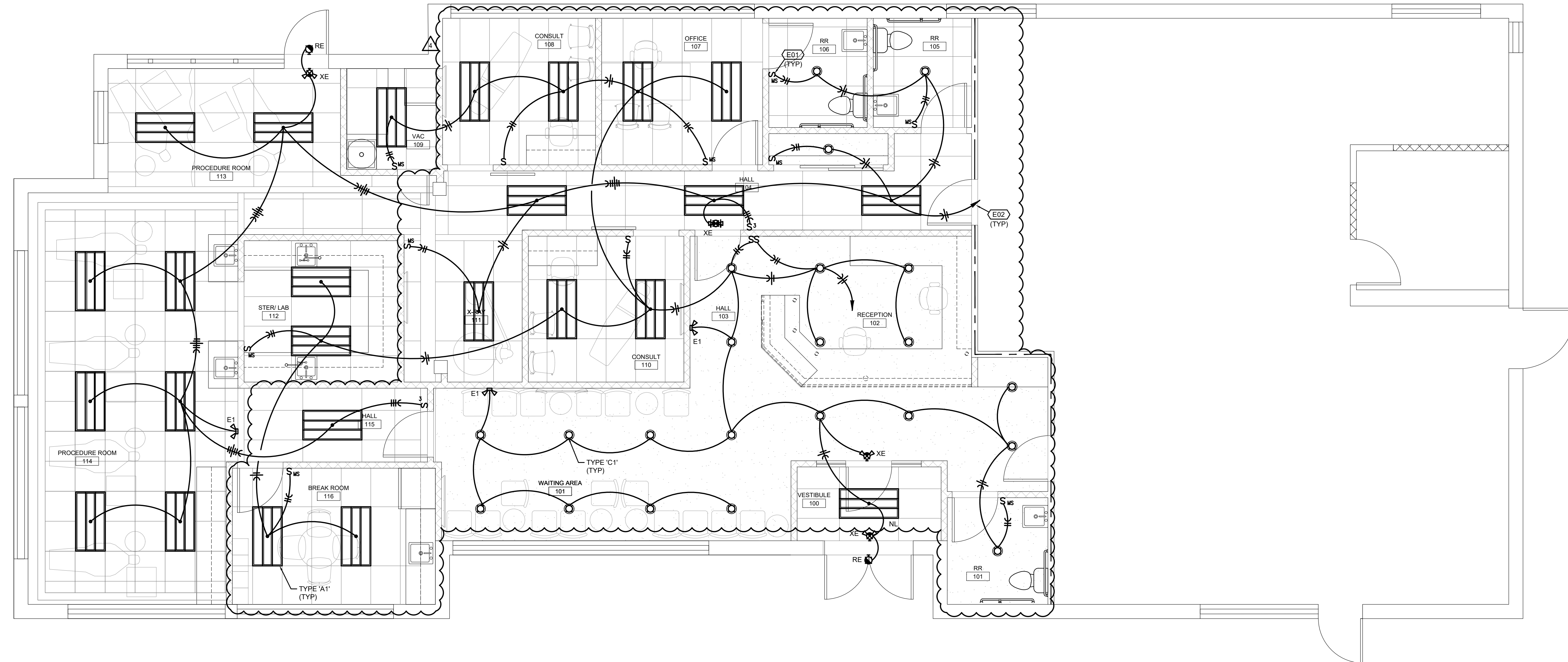


PROJECT NO. 210407
DRAWING ISSUANCE

08/13/2021 PERMIT
09/03/2021 REV 01
10/05/2021 REV 03
01/19/2022 REV 04

SHEET NUMBER

E2.0
FLOOR PLAN-
LIGHTING



FLOOR PLAN-LIGHTING N
SCALE: 1/4"=1'-0"

FLOOR PLAN NOTES

- 1. DUAL TECHNOLOGY WALL SWITCH OCCUPANCY SENSOR BY WATTSTOPPER OR HUBBELL.
- 2. HOMERUN TO EXISTING 120/208 VOLT PANEL 'A' AND TERMINATE ON A 20A/1P BREAKER.



LIGHT FIXTURE SCHEDULE

TYPE	MANUFACTURER	LAMPS	WATTS VOLTS	DESCRIPTION	NOTES
A1	WESTGATE LIGHTING LP-2X4-MW-40K-DS	LED 4400 LUMEN 3500K, 80 CRI	40 120	2X4 RECESSED LED TROFFER WITH DIFFUSE FLAT PANEL, WHITE HOUSING, 0-10V DIMMING DRIVER.	
B1	TO BE SELECTED	LED 3500K, 80 CRI	35 120	DECORATIVE LED PENDANT	
C1	WESTGATE LIGHTING CRLC6-15W-40K-D	LED 1245 LUMEN 4000K, 80 CRI	12 120	NOMINAL 6" DIAMETER RECESSED DOWNLIGHT, HAZE REFLECTOR AND TRIM, 0-10V DIMMING DRIVER.	
E1	SURE-LITES APEL	LED W/ FIXTURE	1.5 120	WHITE, POLYCARBONATE, NICAD BATTERY, EMERGENCY LIGHTING UNIT.	
XE RE	SURE-LITES APC-7-R	LED W/ FIXTURE	2 120	COMBINATION EXIT SIGN AND EMERGENCY LIGHTING UNIT, NICAD BATTERY, RED LETTERS, WHITE HOUSING. PROVIDE WITH SURE-LITES SELA SERIES REMOTE HEAD WHERE INDICATED ON PLANS.	1

SPECIFIC NOTES:
1. REFERENCE PLANS FOR MOUNTING, NUMBER OF FACES AND ARROWS.

SUBSTITUTION NOTES:

THE LIGHTING DESIGN FOR THIS PROJECT IS BASED UPON THE MANUFACTURERS SPECIFIED. IF AN ADDITIONAL SUBSTITUTION IS DESIRED BY THE CONTRACTOR, A SUBSTITUTION REQUEST SUBMITTAL MUST BE PROVIDED AS FOLLOWS:

- S1. SUBSTITUTION REQUEST MUST BE RECEIVED BY THE ENGINEER IN WRITING 10 DAYS PRIOR TO BID. FAILURE TO SUBMIT CONSTITUTES A GUARANTEE TO SUPPLY THE SPECIFIED FIXTURES.
- S2. INFORMATION IS TO BE SUPPLIED COMPARING PHOTOMETRY, (WITH FLOOR PLANS INDICATING POINT BY POINT CALCULATIONS) DIMENSIONS, MATERIAL COMPOSITION, FINISH, VISUAL APPEARANCE AS WELL AS THE "CONTRACTOR NET" PRICING. SAMPLES ARE TO BE PROVIDED UPON REQUEST.
- S3. GREAT CARE, TIME AND EXPENSE HAVE BEEN USED TO PROVIDE OUR CLIENT WITH THE LIGHTING AND CONTROLS SYSTEM. THEREFORE, FOR EACH AND EVERY TYPE OF FIXTURE OFFERED AS AN UNSOLICITED ALTERNATE, A \$500.00 FEE WILL BE CHARGED TO THE CONTRACTOR FOR REVIEW OF THE ALTERNATE FIXTURE. THIS CHARGE IS IN NO WAY A GUARANTEE OF APPROVAL, BUT IS SOLELY TO COMPENSATE THE ENGINEER FOR TIME SPENT VALIDATING EQUALITY AND COMPATIBILITY WITH THE PROJECT REQUIREMENTS. THIS REIMBURSEMENT MUST BE RECEIVED BY THE ENGINEER PRIOR TO ANY REVIEW COMMENCING.
- S4. PACKAGING OF LIGHT FIXTURES WILL NOT BE CONSIDERED OR APPROVED.
- S5. MANUFACTURER'S REPRESENTATIVE AGENTS SHALL BE ALLOWED TO OFFER MINI-LOT PRICING FOR SPECIFIED LIGHTING FIXTURES.
- S6. LIGHTING CONTROLS PRICING SHALL BE COMPLETELY SEPARATE OF ANY LIGHT FIXTURE PRICING. ANY LIGHTING CONTROLS PRICING THAT IS SUBMITTED WITH LIGHT FIXTURE PRICING (UNIT OR MINI-LOT) WILL BE IMMEDIATELY REJECTED IN ITS ENTIRETY.

GENERAL NOTE:

- G1. ELECTRICAL CONTRACTOR SHALL VERIFY CEILING TYPE PRIOR TO ORDERING ANY LIGHT FIXTURES.
- G2. ELECTRICAL CONTRACTOR SHALL COORDINATE DIMMING DRIVERS/BALLASTS WITH DIMMING SWITCHES/SYSTEMS AND SHALL INCLUDE ALL REQUIRED CONTROL WIRING.

GENERAL NOTES (TYPICAL ALL SHEETS)

- A. REFER TO ARCHITECTS REFLECTED CEILING PLANS FOR EXACT PLACEMENT OF LIGHT FIXTURES, SPEAKER AND F.A. DEVICES IN THE CEILING SYSTEM.
- B. REFER TO ARCHITECTURAL DETAILS AND ELEVATIONS FOR COORDINATION OF LOCATION OF ALL WIRING DEVICES BEFORE ROUGH-IN OF J-BOXES.
- C. WIRING TO BE REMOVED BACK TO THE NEAREST DEVICE TO REMAIN. WIRING SHALL NOT BE TAKEN PAST THE FIRST JUNCTION BOX BEFORE THE PANELBOARD.
- D. ANY MATERIAL REMOVED THAT OWNER DOES NOT WISH TO RETAIN SHALL BE REMOVED FROM PROJECT SITE AND DISPOSED OF BY THE CONTRACTOR.
- E. NEW CIRCUITRY SHOWN FOR NEW/EXISTING POWER AND LIGHTING IS DIAGRAMMATIC AND IS INTENDED TO SHOW WHICH DEVICES ARE TO BE GROUPED ON INDIVIDUAL CIRCUITS. EXISTING WIRING THAT CONFORMS TO THE INTENT OF THE DRAWINGS MAY BE USED.
- F. PROVIDE UPDATED, TYPEWRITTEN PANELBOARD DIRECTORY FOR EACH PANELBOARD WHICH CIRCUITS HAVE BEEN ADDED TO OR MODIFIED.
- G. SUPPORT ALL LIGHT FIXTURES WITH A MINIMUM OF (4) 12 GA. HANGER WIRES TO STRUCTURE ABOVE.
- H. CONNECT EXIT AND EMERGENCY LIGHTS TO HOT LEG, NOT SWITCH LEG.
- I. WHERE MORE THAN ONE SWITCH IS INDICATED ON DRAWINGS SIDE BY SIDE, CONTRACTOR SHALL INSTALL SWITCHES UNDER ONE COMMON FACE PLATE.

ELECTRICAL SYMBOLS

	BRANCH CIRCUIT CONCEALED IN CEILING OR WALL. ARROWS INDICATE HOMERUNS TO PANEL. ALL CONDUCTORS ARE MINIMUM NO. 12 UNLESS NOTED OTHERWISE.
	PHASE CONDUCTORS
	NEUTRAL CONDUCTOR
	SWITCH-LEG AND OR TRAVELER
	GROUND CONDUCTOR
	PANEL - BREAKER NUMBER (IDENTIFICATION)
	INDICATES XX= 2-POLE C.B., XXX= 3-POLE C.B.
	HOMERUN INDICATED LIKE THIS INDICATED THREE SEPARATE CIRCUITS
	CONDUIT CONCEALED IN CEILING OR WALL WITH THREE CONDUCTORS: 1-PHASE, 1-NEUTRAL, 1-GROUND WIRE, MINIMUM NO. 12 WIRE UNLESS OTHERWISE SPECIFIED ON DRAWINGS.
	CONDUIT RUN UNDERGROUND OR CONCEALED IN FLOOR SLAB.
	GROUNDING CONDUCTOR NO. 12 WIRE EXCEPT AS NOTED
	COMBINATION EXIT SIGN/EMERGENCY LIGHTING UNIT - CEILING OR WALL MOUNTED. SHADED SIDE(S) INDICATES FACE SIDE(S) OF EXIT.
	CEILING OR WALL MOUNTED EMERGENCY LIGHTING UNIT WITH INTEGRAL BATTERY AND UNIT MOUNTED HEADS.
	2x4 / 2x2 LIGHT FIXTURE, LETTER DENOTES FIXTURE TYPE, REFER TO SCHEDULE
	WALL WASH OR RECESSED CEILING LIGHT FIXTURE
	PENDANT MOUNTED LIGHT FIXTURE, SIZE AND TYPE AS NOTED
	208V/120V OR 120/240V PANELBOARD (FLUSH) TOP MOUNTED 6'-0" AFF
	DISTRIBUTION PANEL (SURFACE OR FLOOR MOUNTED).
	POWER CONNECTION POINT
	DISCONNECT SWITCH, SIZE AND TYPE AS NOTED TOP MOUNTED 5'-0" AFF
	SINGLE POLE SWITCH, TOP OF DEVICE BOX AT +4'-0" AFF
	THREE-WAY SWITCH, TOP OF DEVICE BOX AT +4'-0" AFF
	WALL MOUNTED MOTION SENSOR, TOP OF DEVICE BOX AT +4'-0" AFF, TYPE AS INDICATED
	DUPLEX RECEPTACLE, +1'-6" AFF OR AS NOTED
	DUPLEX RECEPTACLE INSTALLED ABOVE COUNTERTOP
	DUPLEX RECEPTACLE W/GROUND FAULT PROTECTION, +1'-6" AFF OR AS NOTED
	DOUBLE DUPLEX RECEPTACLE, +1'-6" AFF OR AS NOTED
	WALL MOUNTED OR CEILING MOUNTED JUNCTION BOX.
	LOW VOLTAGE OUTLET, DOUBLE GANG BOX WITH SINGLE GANG PLASTER RING. INSTALL 1" CONDUIT STUBBED UP OUT OF TOP OF BOX TO ABOVE AN ACCESSIBLE CEILING, +1'-6" AFF OR AS NOTED.
	LOW VOLTAGE OUTLET INSTALLED ABOVE COUNTER, DOUBLE GANG BOX WITH SINGLE GANG PLASTER RING. INSTALL 1" CONDUIT STUBBED UP OUT OF TOP OF BOX TO ABOVE AN ACCESSIBLE CEILING, +1'-6" AFF OR AS NOTED.
	DUCT MOUNTED PHOTO-ELECTRIC SMOKE DETECTOR
	INDICATES WIRING DEVICE ABOVE RE: DRAWING
	MECHANICAL EQUIPMENT CALL OUT BUBBLE
	ABOVE FINISH FLOOR
	EXISTING TO REMAIN



Dev Anand
President & CEO

Kevin Campbell
Senior Architect

8807 Monrovia Street
Lenexa, Kansas 66215

Phone: 913.322.8882
Fax: 913.322.8886
Email: kevin@dev-inc.com

THIS DRAWING has been prepared by the Architect, or prepared under his direct supervision or on instrument of service and is intended for use only on this project. All Drawings, Specifications, Ideas and designs, including the overall layout, form, arrangement, and composition of spaces and elements portrayed, constitute the original, unpublished work of the Architect. Any reproduction, use, or disclosure of the information contained herein without the written consent of the Architect is strictly prohibited.

COMPLY WITH all laws, codes, ordinances and regulations with authorities having jurisdiction and with requirements of the Landlord, if applicable. Do not start work until all permits and required approvals are obtained.



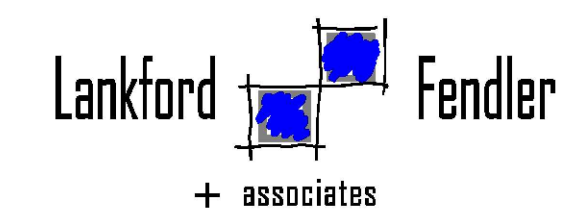
A TENANT FINISH FOR:
LAKWOOD ORTHODONTICS
1399 NE DOUGLAS ST
LEE'S SUMMIT, MO 64086



PROJECT NO. 210407

DRAWING ISSUANCE

08/13/2021	PERMIT
09/03/2021	REV 01
10/05/2021	REV 03
01/18/2022	REV 04



1730 Walnut Street Kansas City, Missouri 64108
1915 Frederick Avenue, St. Joseph, Missouri 64501
Phone: 816.221.1411 | Fax: 816.221.1429
LANKFORD | FENDLER + ASSOCIATES, CONSULTING ENGINEERS, INC.
COPYRIGHT © 2021 Project No. 21-6555-00
CGA No. 2006601168

SHEET NUMBER

E3.1

ELECTRICAL SCHEDULES,
NOTES, AND SYMBOLS