

GENERAL NOTES

1. FLOOR JOISTS TO BE 11-7/8" LPI20 PLUS @ 16" O.C. TYP. UNLESS OTHERWISE NOTED
2. ALL BLOCKING PER STRUCTURAL PLAN
3. LOADING TO BE 40 PSF LL - 15 PSF DL

AMERHART

400 MARSHVIEW DRIVE
SUN PRAIRIE, WI 53590
1-800-879-7123
1-608-834-2253

ADDITIONAL NOTES

1. ALWAYS READ PRODUCT BROCHURE BEFORE INSTALLATION OF EWP PRODUCTS.
2. REFER TO HOLE CHARTS PRIOR TO DRILLING PRODUCT.
3. THIS DOCUMENT IS INTENDED SOLEY AS A PLACEMENT PLAN. IT IS TO BE REVIEWED BY THE ENGINEER OF RECORD AND MUST MEET HIS/HER APPROVAL PRIOR TO INSTALLATION OF OUR PRODUCT.
4. THIS DOCUMENT IS NOT TO BE USED AS A REPLACEMENT FOR YOUR ORIGINAL STRUCTURAL PLANS.
5. LAYOUT, QUANTITY AND LENGTH TO BE VERIFIED BY CONTRACTOR.
6. IF WALLS ARE SPECIFIED IN THIS QUOTE, CONTRACTOR MUST VERIFY ALL DIMENSIONS AND ROUGH OPENING SIZES PRIOR TO CONSTRUCTION OF WALL. ROUGH OPENING SIZES ARE ESTIMATES ONLY. TALL WALL IS DESIGNED FOR VERTICAL LOADS AND DIRECT WIND LOADS ONLY. INLINE LATERAL BRACING OF THE BUILDING DIAPHRAGM IS TO BE ACCOUNTED FOR BY THE BUILDING DESIGNER/ENGINEER.

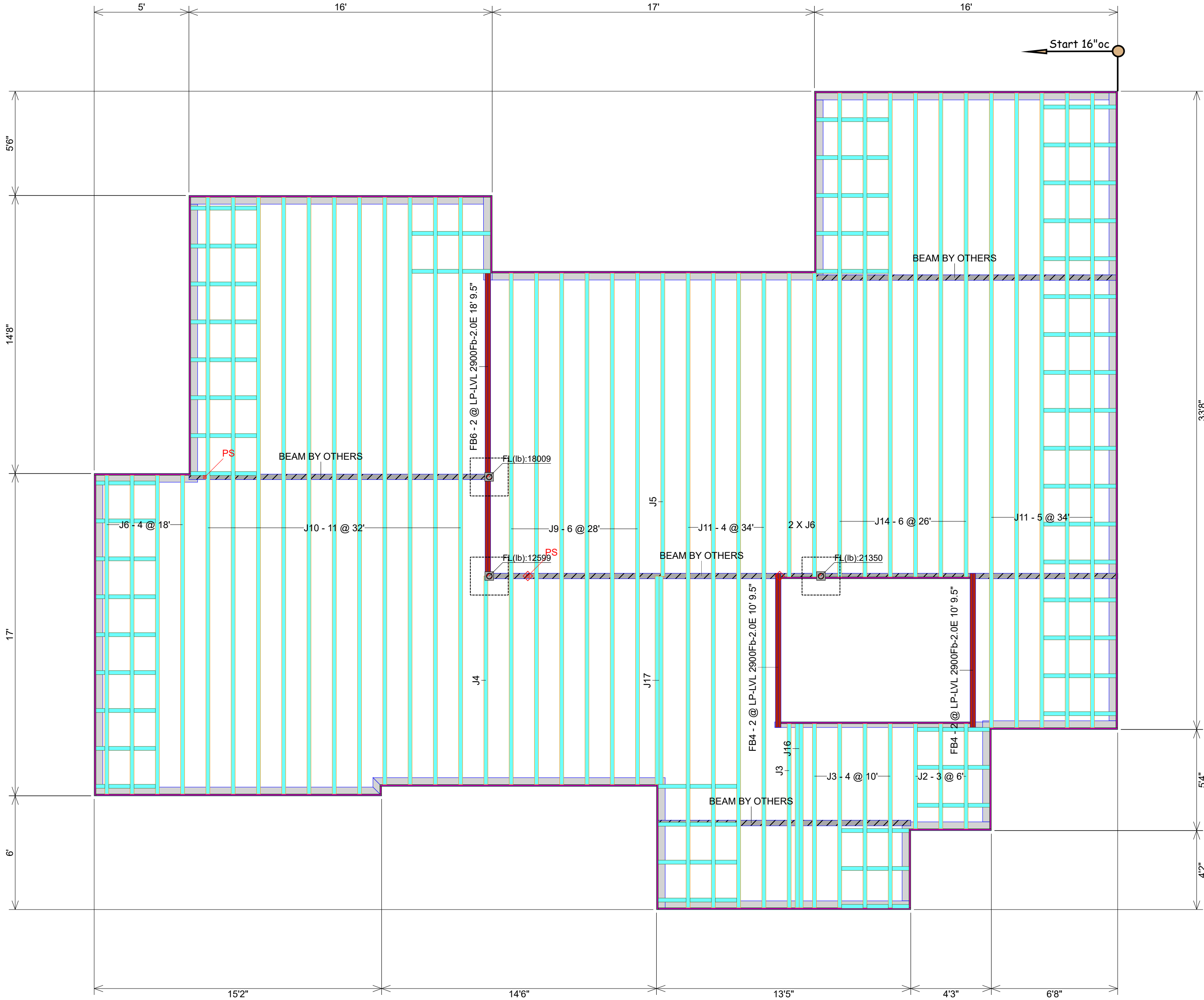


Layout Name
2316 SW CHASE CIR

Amerhart



Project	TL21100ATH
Created	July 06, 2021
Designer	Thomas Hamrick
Layout Name	2316 SW CHASE CIR
Dealer	TEAGUE LUMBER
Revised	July 06, 2021



Ground Floor

I Joist

Label	Description	Width	Depth	Qty	Plies	Pcs	Length
J11	LPI 20Plus	2.5	9.5			9	34-0-0
J10	LPI 20Plus	2.5	9.5			11	32-0-0
J9	LPI 20Plus	2.5	9.5			6	28-0-0
J14	LPI 20Plus	2.5	9.5			6	26-0-0
J6	LPI 20Plus	2.5	9.5			6	18-0-0
J5	LPI 20Plus	2.5	9.5			1	16-0-0
J17	LPI 20Plus	2.5	9.5	1	2	2	12-0-0
J4	LPI 20Plus	2.5	9.5			1	12-0-0
J3	LPI 20Plus	2.5	9.5			5	10-0-0
J16	LPI 20Plus	2.5	9.5	1	2	2	10-0-0
J2	LPI 20Plus	2.5	9.5			3	6-0-0

Blocking

Label	Description	Width	Depth	Qty	Plies	Pcs	Length
BLK1	LPI 20 Plus	2.5	9.5			153	2-0-0

Rim Board

Label	Description	Width	Depth	Qty	Plies	Pcs	Length
R1	LP APA Rated OSB 1.125 X 9.5	1.125	9.5			19	12-0-0

LVL/LSL

Label	Description	Width	Depth	Qty	Plies	Pcs	Length
FB6	LP-LVL 2900Fb-2.0E	1.75	9.5	1	2	2	18-0-0
FB4	LP-LVL 2900Fb-2.0E	1.75	9.5	2	2	4	10-0-0

RELEASE FOR CONSTRUCTION
AS NOTED FOR PLAN REVIEW
DEVELOPMENT SERVICES
LEE'S SUMMIT, MISSOURI

02/07/2022



VERIFIED FOR
CONFORMANCE WITH
REFERENCED PLAN

