

GENERAL FIRE ALARM NOTES

- ELECTRICAL CONTRACTOR SHALL VERIFY AND COORDINATE WITH BUILDING FIRE ALARM MAINTENANCE VENDOR FOR TYPE OF FIRE ALARM DEVICES TO BE USED. ALL NEW DEVICES INSTALLED SHALL BE COMPATIBLE AND CONSISTENT WITH THE EXISTING BUILDING FIRE ALARM SYSTEM INSTALLATION.
- FOR BUILDING FIRE ALARM VENDOR COORDINATE WITH THE BUILDING ENGINEER.
- ELECTRICAL CONTRACTOR SHALL BE RESPONSIBLE TO OBTAIN THE SERVICES OF THE BASE BUILDING FIRE ALARM VENDOR TO DEVELOP AND DESIGN A CODE COMPLIANT, FULLY FUNCTIONAL FIRE ALARM SYSTEM. THE DESIGN DOCUMENTS INDICATE GENERAL INTENT OF AUDIO, VISUAL, AND ACTIVATION DEVICES. ELECTRICAL CONTRACTOR SHALL INCLUDE IN THEIR BID ALL DEVICES REQUIRED BY LOCAL FIRE ALARM INSPECTORS INCLUDING, BUT NOT LIMITED TO SMOKE DETECTORS, PULL STATIONS, WARDEN STATIONS, INTERFACE RELAYS, CONTROL PANELS, POWER BOOSTER PANELS, STROBE PANELS, ADDITIONAL AMPLIFIERS, ETC. CONTRACTOR AND VENDOR SHALL ALSO INCLUDE ALL COMPONENTS TO UPGRADE THE EXISTING BASE BUILDING SYSTEM EXPANSION INCLUDING, BUT NOT LIMITED TO, ADDITIONAL DGP PANELS, RELAY CARDS, STROBE BOOSTER PANELS, AMPLIFIERS, ETC..
- ALL WORK SHALL BE DONE IN ACCORDANCE WITH BUILDING CODE, DEPARTMENT OF BUILDINGS DIRECTIVES, NATIONAL ELECTRICAL CODE ARTICLE 760 (NEC), MECHANICAL CODE, NFPA STANDARDS AND ALL OTHER APPLICABLE CODES AND REGULATIONS
- ELECTRICAL CONTRACTOR SHALL COORDINATE WITH FILING REPRESENTATIVE AND ENSURE THAT ALL DRAWINGS AND DOCUMENTATION HAS BEEN SUBMITTED FOR FILING AND APPROVAL PRIOR TO THE COMMENCEMENT OF WORK. ALL PERMIT COSTS AND INSPECTION FEES SHALL BE INCLUDED AS PART OF THIS CONTRACT. NO WORK SHALL BE COMMENCED UNTIL PLANS ARE APPROVED AND PERMITS FOR FIRE ALARM AND ELECTRICAL WORK IS ISSUED BY THE AHJ.
- THE ELECTRICAL CONTRACTOR/FIRE ALARM VENDOR SHALL PROVIDE AN AUTOCAD AS BUILT DOCUMENT TO RYAN SOAMES ENGINEERING TO SIGN AND SEAL DOCUMENTS REQUIRED FOR AS BUILT SIGN OFF, INSPECTION AND TO OBTAIN FINAL LETTER OF APPROVAL. THIS FILE SHALL INCLUDE AN 11X17 AS BUILT DRAWING, STATEMENT OF OPERATION, NFPA PROGRAMMING MATRIX AND CONTRACTOR'S COMPLETION NOTE AND LOCATION FOR SIGNATURE. RISER DIAGRAM SHALL INCLUDE WIRING GAUGE & QUANTITY. DEVICES SHALL BE DIVIDED INTO CIRCUITS AS INSTALLED IN FIELD AND EACH DEVICE SHALL BE TAGGED WITH A REFERENCE FOR LOCATION IN FIELD (IE. CONFERENCE ROOM, ELEVATOR LOBBY, ETC.). AUTOCAD FILE SHALL BE SUBMITTED TO RYAN SOAMES ENGINEERING A MINIMUM OF FOUR (4) BUSINESS DAYS PRIOR TO DATE OF INSPECTION. HARD COPIES FOR SIGNATURE BY RYAN SOAMES ENGINEERING SHALL NOT BE ACCEPTABLE. AS INFORMATION MUST BE PLACED ON RYAN SOAMES ENGINEERING TITLE BLOCK FOR RYAN SOAMES ENGINEERING SIGNATURE
- IF A LETTER OF DEFECT IS ISSUED BY THE FIRE DEPARTMENT, THE CONTRACTOR SHALL CORRECT ALL ITEMS AND MAKE REQUEST FOR RE-INSPECTION TO OBTAIN A FINAL LETTER OF APPROVAL AT NO ADDITIONAL COST TO OWNER. IF A REVISED AS-BUILT IS REQUIRED, THE CONTRACTOR SHALL PROVIDE REVISED AS-BUILT DRAWINGS IN ACCORDANCE WITH NOTE #6 PRIOR TO SUBMITTING FORM.
- FIRE ALARM RISER DIAGRAM SHOWN IS FOR GENERAL ARRANGEMENT AND SHALL BE USED FOR ESTIMATING ONLY. ELECTRICAL CONTRACTOR SHALL VERIFY EXISTING FIELD CONDITIONS AND OBTAIN POINT TO POINT WIRING DIAGRAM FROM BUILDING FIRE ALARM VENDOR PRIOR TO INSTALLATION. THAT IS CONSISTENT WITH LOCAL FIRE MARSHALL OFFICE REQUIREMENTS.
- SUBMISSION OF BID ACKNOWLEDGES THAT ELECTRICAL CONTRACTOR HAS CONTACTED THE BASE BUILDING VENDOR AND HAS INCLUDED ALL COMPONENTS FOR A CODE COMPLIANT SYSTEM. ADDITIONAL CLAIMS FOR CHANGES IN VENDOR SCOPE OR ADDITIONAL DEVICES/COMPONENTS, UNLESS INITIATED BY TENANT, WILL NOT BE ACCEPTED.
- ALL PROGRAMMING MUST BE UNDERTAKEN BY THE BASE BUILDING FIRE ALARM VENDOR AND ALL FINAL TERMINATIONS MUST BE SUPERVISED (AS A MINIMUM) BY A FIRE ALARM VENDOR TECHNICIAN. ELECTRICAL CONTRACTOR SHALL RETAIN BUILDING FIRE ALARM VENDOR FOR THIS SCOPE. ALL COST ASSOCIATED WITH CONNECTIONS AND REPROGRAMMING OF THE EXISTING FIRE ALARM SYSTEM TO BE PAID BY THIS CONTRACTOR, AND INCLUDED IN THE BASE BID.
- AT COMPLETION OF WORK, CONTRACTOR SHALL DELIVER FDNY LETTER OF APPROVAL TO OWNER/TENANT, AND A COPY TO BUILDING LANDLORD AND BUILDING MANAGEMENT. CONTRACTOR SHALL ALSO PROVIDE COPIES OF APPROVED FIRE ALARM PLANS AND ANY APPLICABLE FORMS TO OWNER/TENANT AND BUILDING MANAGEMENT.
- ELECTRICAL CONTRACTOR/FIRE ALARM VENDOR SHALL SUBMIT FLOOR PLAN SHOP DRAWINGS INDICATING LOCATION OF ALL DEVICES, WIRING OF DEVICES, AND ALL CIRCUITS ON FLOOR. SHOP DRAWINGS SHALL ALSO INDICATE LOCATION OF END OF LINE RESISTORS.
- ALL EQUIPMENT SHALL BE UL LISTED, SHALL MEET REQUIREMENTS OF NFPA 72 AND 90A, ALL APPLICABLE CODES AND LOCAL LAWS, AND BE INSTALLED AND CONNECTED IN ACCORDANCE WITH THE MANUFACTURERS RECOMMENDATIONS AND INSTRUCTIONS. ALL FINAL CONNECTIONS TO BE MADE BY THIS CONTRACTOR WITH THE APPROVAL AND SUPERVISION OF THE BASE BUILDING FIRE ALARM SYSTEM VENDOR.
- FIRE ALARM CABLES SHALL COMPLY WITH THE FOLLOWING REQUIREMENTS:
 - A MINIMUM TEMPERATURE RATING OF 200°C.
 - A MINIMUM AVERAGE INSULATION THICKNESS OF 15 MILS.
 - A MINIMUM AVERAGE JACKET THICKNESS OF 25 MILS.
 - THE COLOR OF THE CABLE SHALL BE RED.
 - THE CABLE SHALL BE TYPE FPLP (PLENUM TYPE)
 - THE CABLE SHALL BE VISIBLY MARKED EXTERNALLY "FIRE ALARM".
 - CABLES SHALL MEET THE ABOVE REQUIREMENTS AND HAVE UL 1424 AND UL 910 LISTING.
 - CABLES SHALL BE APPROVED FOR LOCAL AHJ.
 - CABLES SHALL BE LABELED AS PER THE NATIONAL ELECTRICAL CODE (NEC), NFPA STANDARDS AND ALL OTHER APPLICABLE CODES AND REGULATIONS
- ALL WIRING INCLUDING THE GROUNDING TO BE INSTALLED ACCORDING TO THE LATEST VERSION OF THE NATIONAL ELECTRICAL CODE (NEC).
- ALL SIGNAL WIRING SHALL BE RATED FOR CIRCUIT SURVIVABILITY LEVEL 2 OR GREATER AND PATHWAYS SHALL BE CLASS A, B, OR X AS DIRECTED BY THE BUILDING'S FIRE ALARM VENDOR. ALL WIRING INCLUDING NEEDED TO SURVIVABILITY AND PATHWAY DESIGNATION REQUIREMENTS IS TO BE INCLUDED IN BID PRICING. (NYC: CIRCUIT SURVIVABILITY IS PERMITTED TO BE LEVEL 1 WHERE PATHWAY DESIGNATION IS CLASS A OR X AND REDUNDANT PATHWAY IS SEPARATED BY 15 FEET). ALL SHOP DRAWING AND AS-BUILT FIRE ALARM DRAWINGS SUBMITTED UNDER THIS CONTRACT SHALL INDICATE THE CIRCUIT SURVIVABILITY LEVEL AND CIRCUIT CLASS OF ALL FIRE ALARM CIRCUITS USED UNDER THIS CONTRACT.
- ELECTRICAL CONTRACTOR/FIRE ALARM VENDOR SHALL CONFIRM, PRIOR TO BID, THAT ALL EXISTING DEVICES AND WIRING ARE CODE COMPLIANT. IF DEVICES AND WIRING ARE NOT COMPLIANT REPLACEMENT OF DEVICES AND WIRING SHALL BE INCLUDED IN BASE BID. ADDITIONAL CLAIMS FOR CHANGES IN SCOPE TO REPLACE EXISTING DEVICES, AFTER SUBMISSION OF BID WILL NOT BE ACCEPTED. ALTERNATE NOTE: ELECTRICAL CONTRACTOR/FIRE ALARM VENDOR SHALL INCLUDE THE REPLACEMENT OF ALL EXISTING FIRE ALARM DEVICES AND WIRING IN THEIR BASE BID, WITH A DEDUCT ALTERNATE TO MAINTAIN EXISTING WIRING AND DEVICES FOR REUSE.
- ELECTRICAL CONTRACTOR SHALL BE RESPONSIBLE TO MAINTAIN AND PROTECT ALL FIRE ALARM SPEAKERS, SMOKE DETECTORS, FIRE WARDEN STATIONS AND OTHER FIRE ALARM SAFETY DEVICES IN OPERATION AT ALL TIMES.
- IF ANY PORTION OF THE FIRE ALARM SYSTEM IS DISABLED, NOTIFY BUILDING MANAGER IMMEDIATELY. COORDINATE WITH BUILDING MANAGEMENT IN ADVANCE TO ALLOW ADEQUATE TIME FOR TEMPORARY FIRE WATCHES TO BE SCHEDULED.
- ANYTIME A CONNECTION OR REMOVAL INVOLVING THE CLASS "E" SYSTEM IS REQUIRED, THE CONTRACTOR SHALL CONTACT BUILDING OPERATIONS BEFORE TOUCHING ANY WIRE, COMPONENT OR DEVICE CONNECTED TO THE SYSTEM.
- FIRE ALARM EQUIPMENT SHALL BE POWERED THROUGH AN APPROVED FUSE DISCONNECT CONNECTED AHEAD OF THE MAIN SERVICES SWITCH. FUSE DISCONNECT TO BE LOCATED WITHIN 5 FEET OF THE CONNECTION POINT, PAINTED RED AND SUPPLIED WITH A LOCK. ALL WIRING SHALL BE MINIMUM #12 AWG THHN OR EQUIVALENT RUN IN 3/4 INCH MINIMUM RGS AND IN ACCORDANCE WITH NYC REQUIREMENTS. FUSES SHALL BE CARTRIDGE TYPE WITH A SOLID BAR COPPER NEUTRAL.

ABBREVIATION

A	AMPIAMPERE
ACU	AIR CONDITIONING UNIT
ADA	AMERICANS WITH DISABILITIES ACT
AFF	ABOVE FURNISHED FLOOR
AHJ	AUTHORITIES HAVING JURISDICTION
AHU	AIR HANDLING UNIT
AWG	AMERICAN WIRE GAUGE
C, CDT	CONDUIT
CAC	COMPUTER ROOM GRADE AIR CONDITIONING UNIT
CKT	CIRCUIT
CU	COPPER
DGP	DATA GATHERING PANEL
DWG	DRAWING
E	EXISTING TO REMAIN
EC	ELECTRICAL CONTRACTOR
EF	EXHAUST FAN
ELEC	ELECTRICAL
EM	EMERGENCY
(ER)	EXISTING TO BE RELOCATED
FA	FIRE ALARM
FBO	FURNISHED BY OTHERS, INSTALLED AND WIRED BY THE ELECTRICAL CONTRACTOR
FCO	FUSED CUT OUT
FCS	FIRE COMMAND STATION
FIBO	FURNISHED AND INSTALLED BY OTHERS, WIRED BY THE ELECTRICAL CONTRACTOR
FSD	FIRE SMOKE DAMPER
FT	FEET
G, GND	GROUND
GEN	GENERATOR
HZ	HERTZ
IG	ISOLATED GROUND
JB	JUNCTION BOX
MAX	MAXIMUM
MD	MOTORIZED DAMPER
MECH	MECHANICAL
MER	MECHANICAL EQUIPMENT ROOM
MTD	MOUNTED
N	NEW
NE	NEW TO REPLACE EXISTING
NIC	NOT IN CONTRACT
NTS	NOT TO SCALE
PB	PULL BOX
R	REMOVE EXISTING EQUIPMENT
RCU	REMOTE COMPUTERIZED UNIT PANEL
RE	RELOCATED EXISTING (NEW LOCATION)
RM	ROOM
SD	SMOKE DETECTOR
SPEC	SPECIFICATION
TTB	TERMINAL BOX
TYP	TYPICAL
UON	UNLESS OTHERWISE NOTED
W	WIRE
WP	WEATHERPROOF
X	REMOVE

FIRE ALARM AUDIBILITY DESIGN CRITERIA

AUDIBLE NOTIFICATION DEVICES - DESIGN CRITERIA	AMBIENT LEVEL	DESIGN GOAL
ROOMS	55 DBA	> 70 DBA
CORRIDORS	55 DBA	> 70 DBA
OPEN AREAS	45 DBA	> 60 DBA
MECHANICAL ROOMS	85 DBA	> 100 DBA

FIRE ALARM LEGEND

	SMOKE DETECTOR
	EL - FOR ELEVATOR RECALL
	FLUSH WALL MOUNTED STROBE LIGHT
	INTERFACE MODULE WITH OUTPUT RELAY
	FLUSH WALL MOUNTED DUAL ACTION MANUAL PULL STATION
	WALL MOUNTED SPEAKER/STROBE
	MAGNETIC DOOR HOLD OPEN DEVICE WITH INTERFACE RELAY
	WARDEN STATION

LINE REPRESENTATION

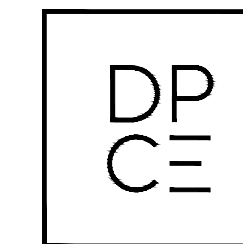
	NEW
	EXISTING TO REMAIN
	EXISTING TO BE REMOVED

DRAWING LIST

FA-001.00	FIRE ALARM GEN NOTES, SYMBOLS, ABBR, PARTIAL RISER DIAGRAM AND DRAWING LIST
FA-002.00	FIRE ALARM SPECIFICATIONS
FA-101.00	FIRE ALARM DEVICE PLAN GROUND FLOOR
FA-601.00	FIRE ALARM PARTIAL RISER DIAGRAM

GF55

225 WEST 39TH STREET
NEW YORK, NY 10018
212 352 3099
© GF55 ARCHITECTS, LLP 2021



1301 Solana Blvd.
Bldg. 1, Suite 1420
Westlake, TX 76262
+1 817 410 2858

WWW.DONPENN.COM

EUROPEAN WAX CENTER
LEE'S SUMMIT - MO

940 NW PRYOR ROAD
LEE'S SUMMIT, MO 64081
JOB#: 1551.445



ISSUE:
100% CD'S
DECEMBER 01, 2021
REVISED FOR BOTTLE FILLER
JANUARY 19, 2022
CONSTRUCTION DOCUMENTS
JANUARY 26, 2022

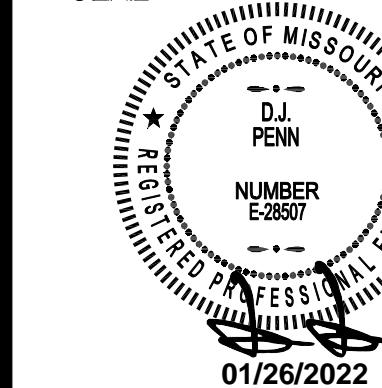
DRAWN BY:
RS

PROJECT ENGINEER:
RS

DRAWING:
FIRE ALARM
SYMBOLS AND NOTES

SCALE:
NOT TO SCALE

SEAL



DRAWING NO.

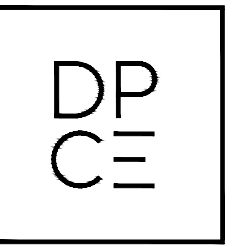
FA-001

FIRE ALARM SPECIFICATIONS

- A. REFER TO ELECTRICAL SPECIFICATIONS FOR GENERAL CONSTRUCTION REQUIREMENTS TO BE CARRIED OUT UNDER THE ELECTRICAL CONTRACTOR'S SCOPE OF WORK THAT MAY ALSO ASSOCIATE WITH THE PROPER INSTALLATION OF THE MODIFIED FIRE ALARM SYSTEM.
- B. INSTALL NEW FIRE ALARM DEVICES AS AN EXTENSION OF THE EXISTING SYSTEM IN THE BUILDING.
- C. THE FIRE ALARM SYSTEM MODIFICATION SHALL UTILIZE EQUIPMENT AND DEVICES TO MATCH THE EXISTING BUILDING FIRE ALARM SYSTEM AND/OR BE COMPATIBLE THEREWITH.
- D. ALL EQUIPMENT SHALL BE BSA LISTED, MEET REQUIREMENTS OF NFPA 72, ALL APPLICABLE CODES AND LOCAL LAWS, AND BE INSTALLED AND CONNECTED IN ACCORDANCE WITH THE MANUFACTURER'S RECOMMENDATIONS AND INSTRUCTIONS. ALL FINAL CONNECTIONS TO BE MADE BY THIS CONTRACTOR WITH THE APPROVAL AND SUPERVISION OF THE BUILDING OWNER AND FIRE ALARM SYSTEM VENDOR.
- E. ALL COST ASSOCIATED WITH CONNECTIONS AND REPROGRAMMING OF THE EXISTING FIRE ALARM SYSTEM TO BE PAID BY THIS CONTRACTOR.
- F. BUILDING FIRE ALARM SYSTEM INTEGRITY, SHALL BE MAINTAINED AT ALL TIMES (BEFORE, DURING AND AFTER DEMOLITION AND/OR CONSTRUCTION, IT IS THIS CONTRACTOR'S RESPONSIBILITY TO MAINTAIN OPERATION OF ALL EXISTING FIRE ALARM DEVICES AT ALL TIMES.
- G. ELECTRICAL CONTRACTOR SHALL CONFIRM THAT ALL EXISTING WIRING ON TENANT FLOOR IS COMPLIANT WITH LATEST FIRE ALARM STANDARDS AND BUILDING REQUIREMENTS. IF WIRING DOES NOT MEET LATEST STANDARDS OR BUILDING REQUIREMENTS, ALL WIRING SHALL BE REPLACED AS PART OF THIS PROJECT.
- H. ELECTRICAL CONTRACTOR SHALL OBTAIN THE SERVICES OF THE BASE BUILDING FIRE ALARM VENDOR TO DEVELOP AND DESIGN A CODE COMPLIANT, FULLY FUNCTIONAL FIRE ALARM SYSTEM. THE DESIGN DOCUMENTS INDICATE GENERAL INTENT OF AUDIO, VISUAL, AND ACTIVATION DEVICES. CONTRACTOR SHALL INCLUDE IN THEIR BID ALL DEVICES REQUIRED BY LOCAL FIRE ALARM INSPECTORS INCLUDING, BUT NOT LIMITED TO SMOKE DETECTORS, PULL STATIONS, WARDEN STATIONS, INTERFACE RELAYS, ETC. CONTRACTOR AND VENDOR SHALL ALSO INCLUDE ALL COMPONENTS TO UPGRADE THE EXISTING BASE BUILDING SYSTEM EXPANSION INCLUDING, BUT NOT LIMITED TO, RELAY CARDS, STROBE CONTROL PANELS, AMPLIFIERS, ETC.
- I. SUBMISSION OF BID ACKNOWLEDGES THAT ELECTRICAL CONTRACTOR HAS CONTACTED THE BASE BUILDING VENDOR AND HAS INCLUDED ALL COMPONENTS FOR A CODE COMPLIANT SYSTEM. ADDITIONAL CLAIMS FOR CHANGES IN VENDOR SCOPE OR ADDITIONAL DEVICES/COMPONENTS, UNLESS INITIATED BY TENANT, WILL NOT BE ACCEPTED
- J. ALL PULL-STATIONS, SPEAKERS AND SMOKE DETECTORS TO MATCH EXISTING BASE BUILDING DEVICES
- K. ALL SMOKE DAMPERS SHALL BE CONNECTED TO THE NEAREST AVAILABLE 120V LIFE SAFETY EMERGENCY CIRCUIT. THE DEVICE INTO FIRE ALARM SYSTEM. PROVIDE ALL REQUIRED END SWITCHES AND ACCESSORIES FOR APPROPRIATE MONITORING AND CONTROL. COORDINATE ALL WORK WITH MECHANICAL CONTRACTOR PRIOR TO ROUGH-IN
- L. ALL AUDIO VISUAL WALL MOUNTED FIRE ALARM DEVICES SHALL BE WHITE WITH WHITE FACE PLATE AND RED LETTERING UNLESS OTHERWISE DIRECTED BY ARCHITECT.
- M. SYSTEM CONNECTIONS FOR INITIATING AND SIGNALING LINE CIRCUITS SHALL MATCH BUILDING STANDARDS AND SHALL BE COMPLIANT WITH THE REQUIREMENTS OF THE FIRE MARSHALL OR AUTHORITY HAVING JURISDICTION.
- N. CIRCUIT SUPERVISION: CIRCUIT FAULTS SHALL BE INDICATED BY A TROUBLE SIGNAL AT THE FACP. PROVIDE A DISTINCTIVE INDICATING AUDIBLE TONE AND ALPHANUMERIC ANNUNCIATION.
- O. VISUAL DEVICE TO BE COMPATIBLE WITH EXISTING FIRE ALARM SYSTEM. CONTRACTOR TO PROVIDE ALL ASSOCIATED DRIVERS, POWER SUPPLIES, CONDUIT, WIRE AND ACCESSORIES FOR A COMPLETE AND OPERATIONAL SYSTEM.
- P. STROBE SHALL BE SUITABLE FOR OPERATION WITH EXISTING FIRE ALARM SYSTEM. THE VIO SHALL CONSIST OF A XENON FLASH TUBE AND ASSOCIATED LENS/REFLECTOR SYSTEM. THE VIO ENCLOSURE SHALL MOUNT DIRECTLY TO STANDARD SINGLE GANG, DOUBLE GANG OR 4' SQUARE ELECTRICAL BOX, WITHOUT THE USE OF SPECIAL ADAPTERS OR TRIM RINGS. VIO APPLIANCES SHALL BE PROVIDED WITH DIFFERENT MINIMUM ADJUSTABLE FLASH INTENSITIES OF 15CD, 30CD, 75CD AND 110CD. PROVIDE A LABEL INSIDE THE STROBE LENS TO INDICATE THE LISTED CANDELA RATING OF THE SPECIFIC VISIBLE/ONLY APPLIANCE. WHEN MULTIPLE STROBES AND THEIR REFLECTIONS CAN BE SEEN FROM ONE LOCATION, PROVIDE STROBE FLASH SYNCHRONIZATION. QUANTITY, SPACING AND CANDELA DESIGN REQUIREMENTS OF VISUAL SIGNALS TO COMPLY TO NFPA REQUIREMENTS
- Q. IT IS THE INTENT OF THESE DRAWINGS AND SPECIFICATIONS THAT THE CONTRACTOR PROVIDE COMPLETE AND OPERATIONAL SYSTEMS AS REQUIRED. WHERE DIFFERENCES OCCUR, THE MAXIMUM CONDITION SHALL GOVERN. ANY MISCELLANEOUS ITEMS, HARDWARE, DEVICES, WIRING, ETC., NOT SPECIFICALLY DESCRIBED, BUT REQUIRED FOR THE OPERATION OF THE SYSTEM, MUST BE PROVIDED AND INCLUDED AS PART OF THE BID.
- R. PROVIDE COMPLETE BREAKDOWN OF MATERIAL, LABOR, OVERHEAD, PROFIT, ETC., WHEN SUBMITTING QUOTATIONS FOR CHANGE NOTICES ON THIS PROJECT. THE HOURLY LABOR RATE SHALL BE INCLUSIVE OF ALL CHARGES FOR SUPERVISION, VARIABLE LABOR FACTORS, HAND TOOLS, PAYROLL BURDENS, HEIGHT FACTORS, WARRANTIES, STORAGE, RENTALS, ADDITIONAL BONDING, PARKING, CLEAN-UP, AS-BUILT DRAWINGS, HOISTING, FREIGHT AND DELIVERY, BUT EXCLUSIVE OF OVERHEAD AND PROFIT.

GF55

225 WEST 39TH STREET
NEW YORK, NY 10018
212 352 3099
© GF55 ARCHITECTS, LLP 2021



1301 Solana Blvd.
Bldg. 1, Suite 1420
Westlake, TX 76262
+1 817 410 2858

WWW.DONPENN.COM

EUROPEAN WAX CENTER
LEE'S SUMMIT - MO

940 NW PRYOR ROAD
LEE'S SUMMIT, MO 64081
JOB#: 1551.445



ISSUE:
100% CD'S
DECEMBER 01, 2021
REVISED FOR BOTTLE FILLER
JANUARY 19, 2022
CONSTRUCTION DOCUMENTS
JANUARY 26, 2022

DRAWN BY:
RS

PROJECT ENGINEER:
RS

DRAWING:
FIRE ALARM
SPECIFICATIONS

SCALE:
NOT TO SCALE

SEAL



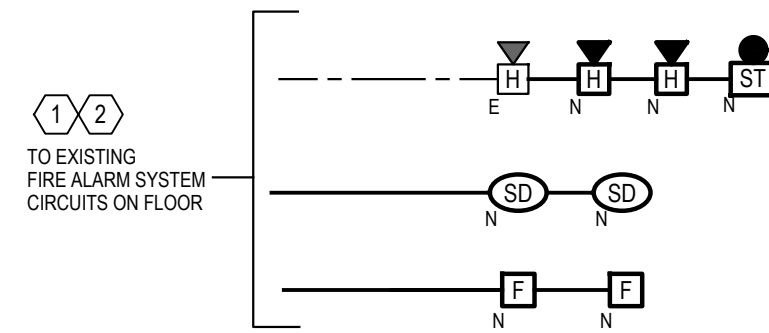
DRAWING NO.

FA-002

File name: C:\Users\duffy\OneDrive\Documents\Projects\Wax\01-20-21 wax lee's summit, llc - ewc lee's summit, mo114.dwg
 User: duffy\duffy
 Date: 1/26/2022 12:54 PM

FIRE ALARM RISER DIAGRAM

NOT TO SCALE



GROUND FLOOR

NFPA OPERATIONS MATRIX

NFPA OPERATIONS MATRIX	SYSTEM OUTPUTS									
	INDICATE DEVICE ADDRESS OR ZONE AT THE FIRE COMMAND STATION	ACTIVATE SPEAKERS AND STROBE DEVICES ON THE FLOOR IN ALARM AND THE FLOOR ABOVE	ACTIVATE AN INQUIRY TONE THROUGHOUT THE BUILDING	ACTIVATE THE FIRE SIGN AT THE FIRE COMMAND STATION	NOTIFY THE FIRE DEPARTMENT VIA CENTRAL STATION	ILLUMINATE THE TROUBLE LAMP AT THE FIRE COMMAND STATION	OPERATE RELAY CONTACTS FOR FAN SHUTDOWN	CLOSE DAMPERS FOR ISOLATION OF AREA IN ALARM	RELEASE ELECTRICALLY-OPERATED DOORS IN PATHS OF EGRESS FROM THE FLOOR IN ALARM	RECALL ELEVATORS SERVING THE FLOOR IN ALARM TO THE GROUND FLOOR
MANUAL PULL STATION	X	X	X	X	X					
AREA SMOKE DETECTOR	X	X	X	X	X		X	X	X	
DUCT SMOKE DETECTOR	X	X	X	X	X		X	X	X	
ELEVATOR LOBBY SMOKE DETECTOR	X	X	X	X	X		X	X	X	X
WATER FLOW DEVICE	X	X	X	X	X		X	X	X	X
TAMPER SWITCH	X				X	X				
TROUBLE CONDITION	X				X	X				

RISER FIRE I/O MATRIX NOTE

- ALL OTHER EXISTING FUNCTIONS TO REMAIN.

RISER FIRE ALARM NOTES

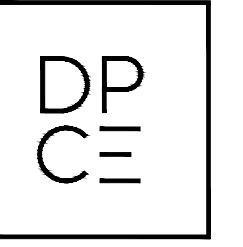
- THIS IS NOT A POINT-TO-POINT WIRING DIAGRAM. USE THIS DIAGRAM FOR ESTIMATING PURPOSES ONLY. PRIOR TO STARTING ANY WORK, A WORKING POINT-TO-POINT WIRING DIAGRAM SHALL BE OBTAINED FROM THE BUILDING FIRE ALARM VENDOR (CROSSFIRE).
- TIE IN ALL SECURITY SYSTEM DOOR RELEASE MECHANISMS TO FIRE ALARM SYSTEM. REFER TO GENERAL NOTES, SHEET FA-001.
- FOR EXACT LOCATION OF MECHANICAL AND SPRINKLER EQUIPMENT REFER TO HVAC AND SPRINKLER DRAWINGS.
- UNLESS OTHERWISE DIRECTED BY BUILDING FIRE ALARM VENDOR, FIRE ALARM DEVICE WIRING SHALL BE AS FOLLOWS (FOR INFORMATION ONLY TO BE APPROVED WITH FA VENDOR PRIOR TO PURCHASE):
 - SPEAKER WIRING - #16 AWG TWISTED AND SHIELDED PAIR BSA/MEA APPROVED TEFLON CABLE.
 - STROBE WIRING - #14 AWG TWISTED AND SHIELDED PAIR BSA/MEA APPROVED TEFLON CABLE.
 - SIGNAL WIRING - #14 AWG TWISTED AND SHIELDED PAIR BSA/MEA APPROVED TEFLON CABLE.
 - ADDRESSABLE LOOP WIRING TWISTED AND SHIELDED PAIR #16.
 - WARDEN STATION WIRING - 3 PAIR TWISTED SHIELDED #18 AWG.
- ALL WIRING BELOW 8' A.F.F. SHALL BE INSTALLED IN CONDUIT.

KEY NOTES

- FIRE ALARM DEVICES TO BE INSTALLED AS PART OF EXISTING FIRE ALARM SYSTEM.
- FIRE ALARM CONTROL PANEL LOCATION TO BE VERIFIED IN FIELD.

GF55

225 WEST 39TH STREET
NEW YORK, NY 10018
212 352 3099
© GF55 ARCHITECTS, LLP 2021



1301 Solana Blvd.
Bldg. 1, Suite 1420
Westlake, TX 76262
+1 817 410 2858

WWW.DONPENN.COM

EUROPEAN WAX CENTER
 LEE'S SUMMIT - MO

940 NW PRYOR ROAD
 LEE'S SUMMIT, MO 64081
 JOB#: 1551.445



ISSUE:
 100% CD'S
 DECEMBER 01, 2021
 REVISED FOR BOTTLE FILLER
 JANUARY 19, 2022
 CONSTRUCTION DOCUMENTS
 JANUARY 26, 2022

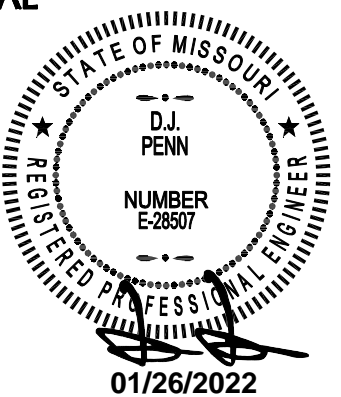
DRAWN BY:
RS

PROJECT ENGINEER:
RS

DRAWING:
FIRE ALARM
RISER DIAGRAMS

SCALE:
NOT TO SCALE

SEAL



DRAWING NO.

FA-601