

2/2/2022 9:04:13 AM

GA FILE NO. WP 8105

GENERIC

1 HOUR FIRE

GYPSUM WALLBOARD, GYPSUM SHEATHING, WOOD STUDS

EXTERIOR SIDE: One layer 48" wide 5/8" type X gypsum sheathing applied parallel to 2 x 4 wood studs 24" o.c. with 1 3/4" galvanized roofing nails 4" o.c. at vertical joints and 7" o.c. at intermediate studs and top and bottom plates. Joints of gypsum sheathing may be left untreated. Exterior cladding to be attached through sheathing to studs.

INTERIOR SIDE: One layer 5/8" type X gypsum wallboard, water-resistant gypsum backing board, or gypsum veneer base applied parallel or at right angles to studs with 6d coated nails, 1 7/8" long, 0.0915" shank, 1/4" heads, 7" o.c. (LOAD-BEARING)

Thickness: Varies

Approx. Weight: 7 psf

Fire Test: See WP 3510 (UL R3501-47, -48, 9-17-65, UL Design U309; UL R1319-129, 7-22-70, UL Design U314)

GENERAL DESCRIPTION		GENERAL EXITING REQUIREMENTS	
PROJECT NAME: ReNOURISH PROJECT LOCATION: LEE'S SUMMIT, MO 64063 COUNTY: JACKSON COLLINS WEBB ARCHITECTURE 307B SW MARKET STREET LEE'S SUMMIT, MISSOURI 64063  APPLICABLE CODES: INTERNATIONAL BUILDING CODE - 2018 ED. INTERNATIONAL PLUMBING CODE - 2018 ED. INTERNATIONAL MECHANICAL CODE - 2018 ED. INTERNATIONAL FUEL GAS CODE - 2018 ED. NATIONAL ELECTRICAL CODE - 2017 ED. INTERNATIONAL FIRE CODE - 2018 ED. ICC/ANSI 1 - 2009, ACCESSIBILITY AND USABILITY CODE		EXIT TRAVEL DISTANCE 200 FEET DEAD END CORRIDOR 20 FEET COMMON PATH OF TRAVEL 30' FEET, OR 75' IF OCC. < 50 MIN. CORRIDOR WIDTH 44" OR 36" IF OCC. < 50  IBC SECTION 1017.2 IBC SECTION 1020.4 IBC SECTION 1029.8 IBC SECTION 1020.2	
CODE INFORMATION		EXIT REQUIREMENTS	
BUILDING/PROJECT USE: OFFICE CONSTRUCTION TYPE: TYPE VB OCCUPANCY CLASSIFICATION: GROUP "B" BUSINESS BUILDING FRAME: WOOD FRAME		A. REQUIRED CAPACITY  1. STAIRS - 0.3" / PERSON 2. OTHER COMPONENTS - 0.2" / PERSON 3. OTHER COMPONENTS WITHIN THEATER ROOMS - 0.22" / PERSON  B. MINIMUM NUMBER  1. OCCUPANT LOAD OF 1-500 PERSONS - 3 EXITS PER STORY 2. OCCUPANT LOAD OF 501-1000 PERSONS - 3 EXITS PER STORY 3. OCCUPANT LOAD OF MORE THAN 1000 PERSONS - 4 EXITS PER STORY	
ACTUAL TENANT AREA (GROSS) 954 SQ. FT.		OCCUPANT LOAD	
ALLOWABLE STORIES 2 STORIES ACTUAL NUMBER OF STORIES 2 STORIES		OFFICE 6 OCC TOTAL OCCUPANT LOAD 6 OCC  EXITS REQUIRED 2 EXITS EXITS PROVIDED 2 EXITS	
ALLOWABLE HEIGHT 40'-0" EXISTING ACTUAL HEIGHT IN FEET 40'-0" EXISTING		PLUMBING FIXTURE REQUIREMENTS	
FIRE RESISTIVE REQUIREMENTS		B OCC WATER CLOSETS = 1/25 FOR THE FIRST 50 AND 1/50 FOR THE REMAINDER EXCEEDING 50 B OCC LAVATORIES = 1/40 FOR THE FIRST 50 AND 1/80 FOR THE REMAINDER EXCEEDING 50 B OCC DRINKING FOUNTAIN = 1/100	
PRIMARY FRAME 0 HRS NON-BEARING WALLS 0 HRS BEARING WALLS INT/EXT. 0 INT. / 0 EXT. HRS FLOOR CONSTRUCTION 0 HRS CEILING/ROOF 0 HRS CORRIDORS 0 HRS		PLUMBING FIXTURES REQUIRED WATER CLOSETS: = 1 REQUIRED LAVATORIES: = 1 REQUIRED DRINKING FOUNTAINS: = 1 REQUIRED  PLUMBING FIXTURES PROVIDED WATER CLOSETS: = 1 PROVIDED LAVATORIES: = 1 PROVIDED DRINKING FOUNTAINS: = BOTTLE WATER PROVIDED	
FIRE EXTINGUISHERS		1. PROVIDE PORTABLE FIRE EXTINGUISHERS IN OCCUPANCIES AND LOCATIONS AS REQUIRED BY THE WISCONSIN FIRE PREVENTION CODE. SEE PLANS FOR SUGGESTED LOCATIONS. NOTIFY ARCHITECT OF ANY PROPOSED RELOCATION OR IF A CONFLICT IS ENCOUNTERED. 2. PORTABLE FIRE EXTINGUISHERS SHALL BE INSTALLED, INSPECTED, AND MAINTAINED IN ACCORDANCE WITH NFPA 10, STANDARD FOR PORTABLE FIRE EXTINGUISHERS.	

FIRE RESISTIVE LEGEND

NUMBER OF OCCUPANTS EXITING  
PROVIDED (IN.)

DESCRIPT.  
200  
40"  
60"

CALCULATED EXIT WIDTH REQ'D (IN.)

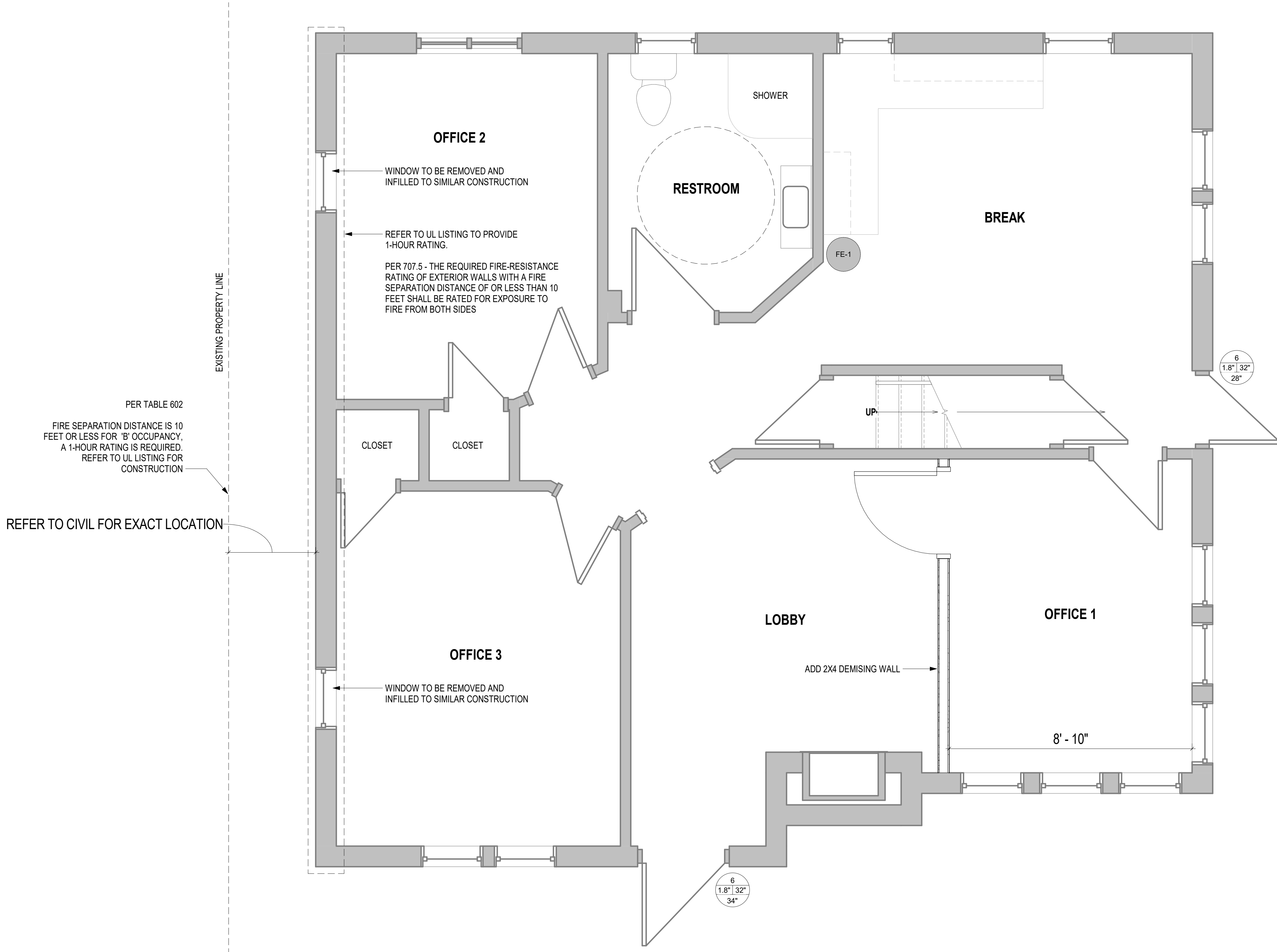
NUMBER OF OCCUPANTS EXITING  
CALCULATED EXIT WIDTH REQ'D (IN.)

200  
40" | 32"  
68"

MIN. WIDTH OF MEANS OF EGRESS COMPONENT (IN.)

FE-1

INDICATES WALL HUNG FIRE EXTINGUISHER (FE) LOCATION WITH 75'-0" RADIUS COVERAGE AREA.



A7 1ST FLOOR  
1/2" = 1'-0"

ReNOURISH - TENANT IMPROVEMENT

102 SW 2ND STREET  
LEE'S SUMMIT, MO 64063

COPYRIGHT © BY  
COLLINS WEBB  
ARCHITECTURE, LLC

REVISION DATES:



PROFESSIONAL SEAL

G001

ISSUE DATE: 2 FEB 2022  
COLLINS WEBB #: 22018

LIFE SAFETY PLAN AND PROJECT INFO.



PERMIT DOCUMENT