

FLOOR PLAN - SYMBOL LEGEND

DESCRIPTION	SYMBOL
INTERIOR LOAD BEARING WALL	
STONE OR BRICK VENEER	
JOIST SIZE AND DIRECTION	
HEADER	
BEAM	
SIZE OF MEMBER PER HEADERS/ BEAM SCHEDULE	
NUMBER OF FLYS	
"U" IF UPSET	
CENTERLINE	
FRONT LOAD	
APPROX. WINDOW FRAME SIZE IN INCHES (SEE GENERAL NOTES BELOW)	
SMOKE ALARM	
SMOKE & CARBON MONOXIDE ALARM	

CONCRETE WALL SCHEDULE

MARK	CONCRETE WALL THICKNESS	HEIGHT	REINFORCING GRADE 40	VERTICAL	HORIZONTAL
1	8"	4' OR LESS	4#4 AT 36" O.C.	5 - 4#4	
2	8"	4' TO 6'	4#4 AT 36" O.C.	5 - 4#4	
3	8"	6' TO 8'	4#4 AT 36" O.C.	4 - 4#4	
4	8"	8' TO 10'	4#4 AT 36" O.C.	4 - 4#4	
5	8"	10' TO 12'	4#4 AT 36" O.C.	3 - 4#4	
6	10"	4'	4#4 AT 36" O.C.	2 - 4#4	
7	10"	8'	4#4 AT 36" O.C.	4 - 4#4	
8	10"	10'	4#4 AT 36" O.C.	3 - 4#4	
9	10"	12'	4#4 AT 36" O.C.	3 - 4#4	
10	10"	14'	4#4 AT 36" O.C.	3 - 4#4	

COLUMN & PAD SCHEDULE

MARK	PAD SIZE	4#4 BARS REQ'D EACH WAY	COLUMN SIZE (SCHEDULE 40)	MAX. LOAD
1	36"x36"x12"	6	3"	135 K
2	48"x48"x16"	8	3"	240 K
3	60"x60"x18"	10	3"	315 K
4	72"x72"x24"	12	5"	540 K

PIER SCHEDULE

MARK	PIER DIAMETER	POST (ACQ OR CEDAR UNO)	MAX. LOAD
1	8"	6x6 UNO	11 K
2	8"	6x6 UNO	26 K
3	12"	6x6 UNO	41 K

1. PAD AND PIER SIZES ASSUME 1500 P.S.F. SOIL BEARING CAPACITY.
2. 10" MAX. STEEL COLUMN HEIGHT FROM BASE PLATE TO TOP OF COLUMN. CONSULT ARCHITECT IF SITE CONDITIONS REQUIRE TALLER COLUMNS.

FLOOR JOIST SCHEDULE

MARK	TYPE	SUB-TYPE	SIZE	SPACING	MAX. SPAN
FJ-1	1"	JOIST (SEE NOTE)	1 1/2"	PER MANUFACTURER	
FJ-2	1"	JOIST (SEE NOTE)	1 1/2"	PER MANUFACTURER	
FJ-3	1"	JOIST (SEE NOTE)	1 1/2"	PER MANUFACTURER	
FJ-4	1"	JOIST (SEE NOTE)	1 1/2"	PER MANUFACTURER	
FJ-5	1"	JOIST (SEE NOTE)	1 1/2"	PER MANUFACTURER	
FJ-6	1"	JOIST (SEE NOTE)	1 1/2"	PER MANUFACTURER	
FJ-7	1"	JOIST (SEE NOTE)	1 1/2"	PER MANUFACTURER	
FJ-8	1"	JOIST (SEE NOTE)	1 1/2"	PER MANUFACTURER	
FJ-9	1"	JOIST (SEE NOTE)	1 1/2"	PER MANUFACTURER	
FJ-10	1"	JOIST (SEE NOTE)	1 1/2"	PER MANUFACTURER	
FJ-11	1"	JOIST (SEE NOTE)	1 1/2"	PER MANUFACTURER	
FJ-12	1"	JOIST (SEE NOTE)	1 1/2"	PER MANUFACTURER	
FJ-13	1"	JOIST (SEE NOTE)	1 1/2"	PER MANUFACTURER	
FJ-14	1"	JOIST (SEE NOTE)	1 1/2"	PER MANUFACTURER	
FJ-15	1"	JOIST (SEE NOTE)	1 1/2"	PER MANUFACTURER	
FJ-16	1"	JOIST (SEE NOTE)	1 1/2"	PER MANUFACTURER	

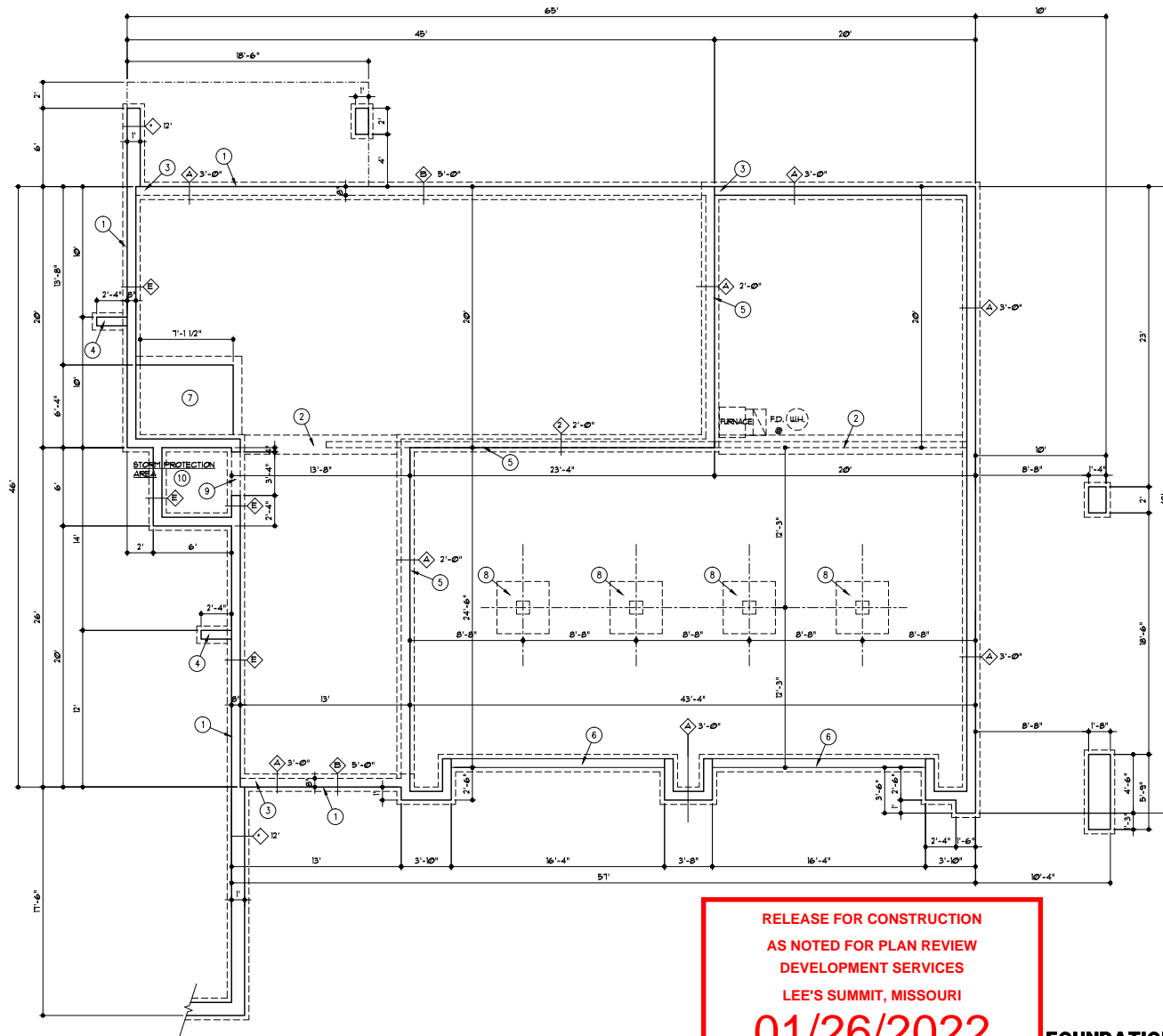
NOTE: DESIGN FLOOR JOISTS (LOADED W/ TOTAL LIVE AND DEAD LOAD) WITH A MAX. DEFLECTION OF L/460, EXCEPT BELOW BATHROOMS & TILED AREAS WHERE THE DEFLECTION SHALL BE L/400 MAX.

GENERAL NOTES:

- FOR DECK FRAMING - SEE DETAIL 3/122
- SEE G3 SHEET FOR LOCATION OF HOLD-DOWN TIES FOR BRACED WALL PANELS
- FURNACE IS DIRECT VENT AND USES OUTSIDE AIR FOR COMBUSTION

FOUNDATION PLAN NOTES

- STEP FOUNDATION & FOOTING AS REQUIRED BY SITE
- 16" WIDE X 8" DEEP CONCRETE FOOTING W/ 2#4 BARS CONTINUOUS
- DROP TOP OF FOUNDATION WALL
- RETURN WALL - SEE DETAIL 8/122
- DROP FLOOR SLAB 2'
- RECESS TOP OF FOUNDATION FOR GARAGE DOOR
- RECESS FLOOR 12" FOR ELEVATOR PIT
- CONCRETE PIER AND PAD - SEE DETAIL 3/122
- CONCRETE DOORWAY HEADER - SEE DETAIL 1/122
- SEE DETAIL 4/122 FOR SUSPENDED STUCCO DETAIL



RELEASE FOR CONSTRUCTION
AS NOTED FOR PLAN REVIEW
DEVELOPMENT SERVICES
LEE'S SUMMIT, MISSOURI

01/26/2022

FOUNDATION PLAN
1/4" = 1'-0"

THE JONES RESIDENCE
4371 S.W. RANTRREE PARKWAY
LEE'S SUMMIT, MO. 64082

LANDROCK SIGNATURE HOMES LLC.
4335 McGEE ST. • 816-863-5588
KANSAS CITY, MO 64111



DRAWN BY: MP
DATE: 11-10-21
PROJECT NO: 21-009-01

SHEET NO. A1

FLOOR PLAN - SYMBOL LEGEND

DESCRIPTION	SYMBOL
INTERIOR LOAD BEARING WALL	=====
STONE OR BRICK VENEER	=====
JOIST SIZE AND DIRECTION	----->-----
HEADER	=====
BEAM	=====
SIZE OF MEMBER PER	(A) 1
HEADER/ BEAM SCHEDULE	(A) 1
NUMBER OF FLYS	(A) 1
"U" IF UPSET	(A) 1
CENTERLINE	-----
FRONT LOAD	=====
APPROX. WINDOW FRAME SIZE IN INCHES	24" x 36"
(SEE GENERAL NOTES BELOW)	
SMOKE ALARM	(S)
SMOKE & CARBON MONOXIDE ALARM	(S)

HEADER / BEAM SCHEDULE

MARK	LUMBER SIZE	CRIPPLE STUDS	TRIMMERS
(A)	2 x 6	1	1
(B)	2 x 8	1	1
(C)	2 x 8	1	1
(D)	2 x 8	2	1
(E)	2 x 8	2	1
(F)	2 x 8	2	1
(G)	2 x 8	2	1
(H)	2 x 8	2	1
(I)	2 x 8	2	1
(J)	2 x 8	2	1
(K)	2 x 8	2	1
(L)	2 x 8	2	1
(M)	2 x 8	2	1
(N)	2 x 8	2	1

1. BEAMS SHALL HAVE TOTAL NUMBER OF CRIPPLES AND TRIMMERS UNDER EACH END, SOLID BLOCK BELOW.

2. FOR LVL, BEAMS IN 2ND FLOOR, USE 3/4" LVL.

FLOOR JOIST SCHEDULE

MARK	TYPE	SUB-TYPE	SIZE	(SPACING) MAX. SPAN
FJ-1	1" JOIST (SEE NOTE)		3/4"	PER MANUFACTURER
FJ-2	1" JOIST (SEE NOTE)		1 1/8"	PER MANUFACTURER
FJ-3	1" JOIST (SEE NOTE)		1 1/2"	PER MANUFACTURER
FJ-4	OPEN WEB TRUSSES		14"	PER MANUFACTURER
FJ-5	OPEN WEB TRUSSES		16"	PER MANUFACTURER
FJ-6	LUMBER	ACQ. TREATED	2x6	12' O.C. 16'-2"
FJ-7	LUMBER	ACQ. TREATED	2x6	12' O.C. 16'-2"
FJ-8	LUMBER		2x8	12' O.C. 14'-2"
FJ-9	LUMBER		2x8	12' O.C. 14'-2"
FJ-10	LUMBER		2x8	12' O.C. 14'-2"
FJ-11	LUMBER		2x8	12' O.C. 14'-2"
FJ-12	LUMBER		2x8	12' O.C. 14'-2"
FJ-13	LUMBER		2x8	12' O.C. 14'-2"
FJ-14	LUMBER		2x8	12' O.C. 14'-2"
FJ-15	LUMBER		2x8	12' O.C. 14'-2"
FJ-16	LUMBER		2x8	12' O.C. 14'-2"
FJ-17	LUMBER		2x8	12' O.C. 14'-2"
FJ-18	LUMBER		2x8	12' O.C. 14'-2"
FJ-19	LUMBER		2x8	12' O.C. 14'-2"
FJ-20	LUMBER		2x8	12' O.C. 14'-2"
FJ-21	LUMBER		2x8	12' O.C. 14'-2"
FJ-22	LUMBER		2x8	12' O.C. 14'-2"
FJ-23	LUMBER		2x8	12' O.C. 14'-2"
FJ-24	LUMBER		2x8	12' O.C. 14'-2"
FJ-25	LUMBER		2x8	12' O.C. 14'-2"
FJ-26	LUMBER		2x8	12' O.C. 14'-2"
FJ-27	LUMBER		2x8	12' O.C. 14'-2"
FJ-28	LUMBER		2x8	12' O.C. 14'-2"
FJ-29	LUMBER		2x8	12' O.C. 14'-2"
FJ-30	LUMBER		2x8	12' O.C. 14'-2"
FJ-31	LUMBER		2x8	12' O.C. 14'-2"
FJ-32	LUMBER		2x8	12' O.C. 14'-2"
FJ-33	LUMBER		2x8	12' O.C. 14'-2"
FJ-34	LUMBER		2x8	12' O.C. 14'-2"
FJ-35	LUMBER		2x8	12' O.C. 14'-2"
FJ-36	LUMBER		2x8	12' O.C. 14'-2"
FJ-37	LUMBER		2x8	12' O.C. 14'-2"
FJ-38	LUMBER		2x8	12' O.C. 14'-2"
FJ-39	LUMBER		2x8	12' O.C. 14'-2"
FJ-40	LUMBER		2x8	12' O.C. 14'-2"
FJ-41	LUMBER		2x8	12' O.C. 14'-2"
FJ-42	LUMBER		2x8	12' O.C. 14'-2"
FJ-43	LUMBER		2x8	12' O.C. 14'-2"
FJ-44	LUMBER		2x8	12' O.C. 14'-2"
FJ-45	LUMBER		2x8	12' O.C. 14'-2"
FJ-46	LUMBER		2x8	12' O.C. 14'-2"
FJ-47	LUMBER		2x8	12' O.C. 14'-2"
FJ-48	LUMBER		2x8	12' O.C. 14'-2"
FJ-49	LUMBER		2x8	12' O.C. 14'-2"
FJ-50	LUMBER		2x8	12' O.C. 14'-2"
FJ-51	LUMBER		2x8	12' O.C. 14'-2"
FJ-52	LUMBER		2x8	12' O.C. 14'-2"
FJ-53	LUMBER		2x8	12' O.C. 14'-2"
FJ-54	LUMBER		2x8	12' O.C. 14'-2"
FJ-55	LUMBER		2x8	12' O.C. 14'-2"
FJ-56	LUMBER		2x8	12' O.C. 14'-2"
FJ-57	LUMBER		2x8	12' O.C. 14'-2"
FJ-58	LUMBER		2x8	12' O.C. 14'-2"
FJ-59	LUMBER		2x8	12' O.C. 14'-2"
FJ-60	LUMBER		2x8	12' O.C. 14'-2"
FJ-61	LUMBER		2x8	12' O.C. 14'-2"
FJ-62	LUMBER		2x8	12' O.C. 14'-2"
FJ-63	LUMBER		2x8	12' O.C. 14'-2"
FJ-64	LUMBER		2x8	12' O.C. 14'-2"
FJ-65	LUMBER		2x8	12' O.C. 14'-2"
FJ-66	LUMBER		2x8	12' O.C. 14'-2"
FJ-67	LUMBER		2x8	12' O.C. 14'-2"
FJ-68	LUMBER		2x8	12' O.C. 14'-2"
FJ-69	LUMBER		2x8	12' O.C. 14'-2"
FJ-70	LUMBER		2x8	12' O.C. 14'-2"
FJ-71	LUMBER		2x8	12' O.C. 14'-2"
FJ-72	LUMBER		2x8	12' O.C. 14'-2"
FJ-73	LUMBER		2x8	12' O.C. 14'-2"
FJ-74	LUMBER		2x8	12' O.C. 14'-2"
FJ-75	LUMBER		2x8	12' O.C. 14'-2"
FJ-76	LUMBER		2x8	12' O.C. 14'-2"
FJ-77	LUMBER		2x8	12' O.C. 14'-2"
FJ-78	LUMBER		2x8	12' O.C. 14'-2"
FJ-79	LUMBER		2x8	12' O.C. 14'-2"
FJ-80	LUMBER		2x8	12' O.C. 14'-2"
FJ-81	LUMBER		2x8	12' O.C. 14'-2"
FJ-82	LUMBER		2x8	12' O.C. 14'-2"
FJ-83	LUMBER		2x8	12' O.C. 14'-2"
FJ-84	LUMBER		2x8	12' O.C. 14'-2"
FJ-85	LUMBER		2x8	12' O.C. 14'-2"
FJ-86	LUMBER		2x8	12' O.C. 14'-2"
FJ-87	LUMBER		2x8	12' O.C. 14'-2"
FJ-88	LUMBER		2x8	12' O.C. 14'-2"
FJ-89	LUMBER		2x8	12' O.C. 14'-2"
FJ-90	LUMBER		2x8	12' O.C. 14'-2"
FJ-91	LUMBER		2x8	12' O.C. 14'-2"
FJ-92	LUMBER		2x8	12' O.C. 14'-2"
FJ-93	LUMBER		2x8	12' O.C. 14'-2"
FJ-94	LUMBER		2x8	12' O.C. 14'-2"
FJ-95	LUMBER		2x8	12' O.C. 14'-2"
FJ-96	LUMBER		2x8	12' O.C. 14'-2"
FJ-97	LUMBER		2x8	12' O.C. 14'-2"
FJ-98	LUMBER		2x8	12' O.C. 14'-2"
FJ-99	LUMBER		2x8	12' O.C. 14'-2"
FJ-100	LUMBER		2x8	12' O.C. 14'-2"

NOTE: DESIGN JOISTS (LOADED W/ TOTAL LIVE AND DEAD LOAD) WITH A MAX. DEFLECTION OF L/360. EXCEPT BELOW BATHROOMS AND TILED AREAS WHERE THE DEFLECTION SHALL BE L/480 MAX.

GENERAL NOTES:

A. EXTERIOR FRAMED WALLS ARE 2x6 STUDS AT 16" O.C. UNLESS NOTED OTHERWISE.

B. FOR DECK FRAMING - SEE DETAIL 3/52

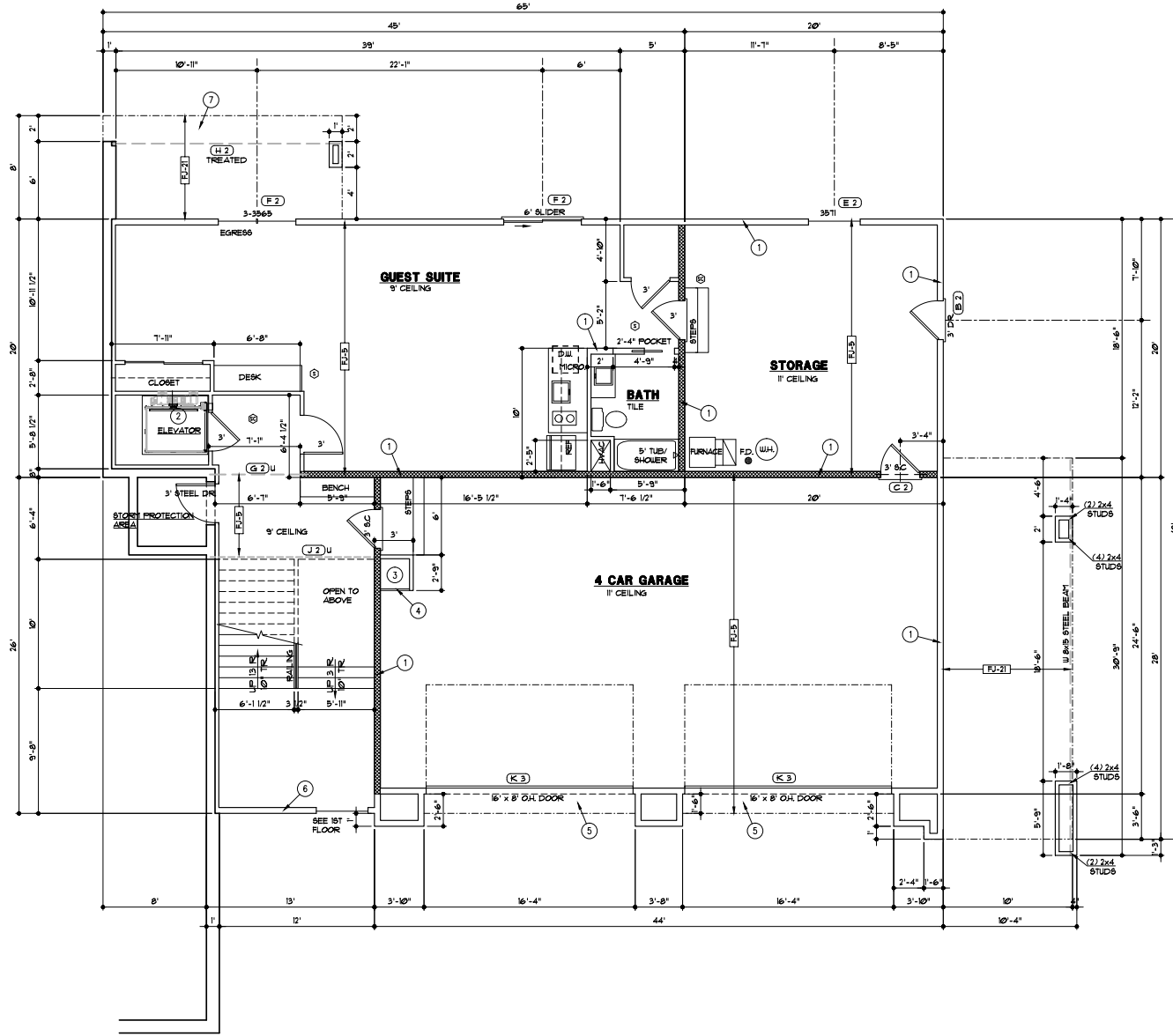
C. SEE G3 SHEET FOR LOCATION OF HOLD-DOWN TIES FOR BRACES, WALL PANELS.

D. 1 JOISTS TO BE PROTECTED BY 1/2" GYPSUM BOARD ATTACHED TO THE BOTTOM FLANGE OR 2" OF MINERAL WOOL INSULATION SPANNING BETWEEN THE BOTTOM FLANGES.

E. THE FURNACE AND WATER HEATER ARE DIRECT VENT AND USE OUTSIDE AIR FOR COMBUSTION.

LOWER LEVEL PLAN NOTES

- 2x6 STUDS AT 16" O.C.
- VERIFY ELEVATOR DOOR LOCATION, SHAFT SIZE AND BLOCKING REQUIREMENTS WITH ELEVATOR MANUFACTURER
- DUMP WATER
- CABINET DOOR
- EXTEND FLOOR FRAMING AND INSULATE SOFFIT
- 19'-3" TALL UNINTERRUPTED STAIRWELL WALL, 2x6 STUDS AT 12" O.C.
- CANTILEVER DECK FLOOR FRAMING



LOWER LEVEL PLAN

1/4"

RELEASE FOR CONSTRUCTION

AS NOTED FOR PLAN REVIEW

DEVELOPMENT SERVICES

LEE'S SUMMIT, MISSOURI

01/26/2022

THE JONES RESIDENCE
4871 S.W. RANTREE PARKWAY
LEE'S SUMMIT, MO. 64082

LANDROCK SIGNATURE HOMES LLC.
4335 McGEE ST. • 816-863-5588
KANSAS CITY, MO 64111



DRAWN BY: MP
DATE: 11-10-21
PROJECT NO: 21-009-01

SHEET NO. A2

FLOOR PLAN - SYMBOL LEGEND

DESCRIPTION	SYMBOL
INTERIOR LOAD BEARING WALL	
STONE OR BRICK VENEER	
JOIST SIZE AND DIRECTION	
HEADER	
BEAM	
SIZE OF MEMBER PER HEADER/ BEAM SCHEDULE	(A) 1
NUMBER OF FLYS	"U" IF UPSET
CENTERLINE	
FRONT LOAD	
APPROX. WINDOW FRAME SIZE IN INCHES (SEE GENERAL NOTES BELOW)	2x4 C
SMOKE ALARM	(S)
SMOKE & CARBON MONOXIDE ALARM	(SM)

HEADER / BEAM SCHEDULE

MARK	LUMBER SIZE	CRIPPLE STUDS	TRIMMERS
(A)	2 x 6	1	1
(B)	2 x 8	1	1
(C)	2 x 10	1	1
(D)	2 x 12	2	1
(E)	2 x 14	2	1
(F)	2 x 16	2	1
(G)	2 x 18	2	1
(H)	2 x 20	2	1
(I)	2 x 22	2	1
(J)	2 x 24	2	1
(K)	2 x 26	2	1
(L)	2 x 28	2	1
(M)	2 x 30	2	1
(N)	2 x 32	2	1

1. BEAMS SHALL HAVE TOTAL NUMBER OF CRIPPLES AND TRIMMERS UNDER EACH END, SOLID BLOCK BELOW.
2. FOR LVL, BEAMS IN 2ND FLOOR, USE 3/4" LVL.

CEILING JOISTS SCHEDULE - LIVE LOAD 10 P.S.F.

MARK	SIZE	SPACING	MAXIMUM SPAN - DOUGLAS FIR
CJ-1	2x6	12"	19'-6"
CJ-2	2x6	16"	17'-8"
CJ-3	2x8	16"	25'-8"
CJ-4	2x8	16"	23'-6"
CJ-5	2x8	12"	26'-0"
CJ-6	2x8	16"	24'-0"
CJ-7	2x4	24"	9'-10"
CJ-8	2x6	24"	14'-10"
CJ-9	2x8	24"	18'-3"
CJ-10	2x10	24"	22'-11"

SQUARE FOOTAGE TABLE

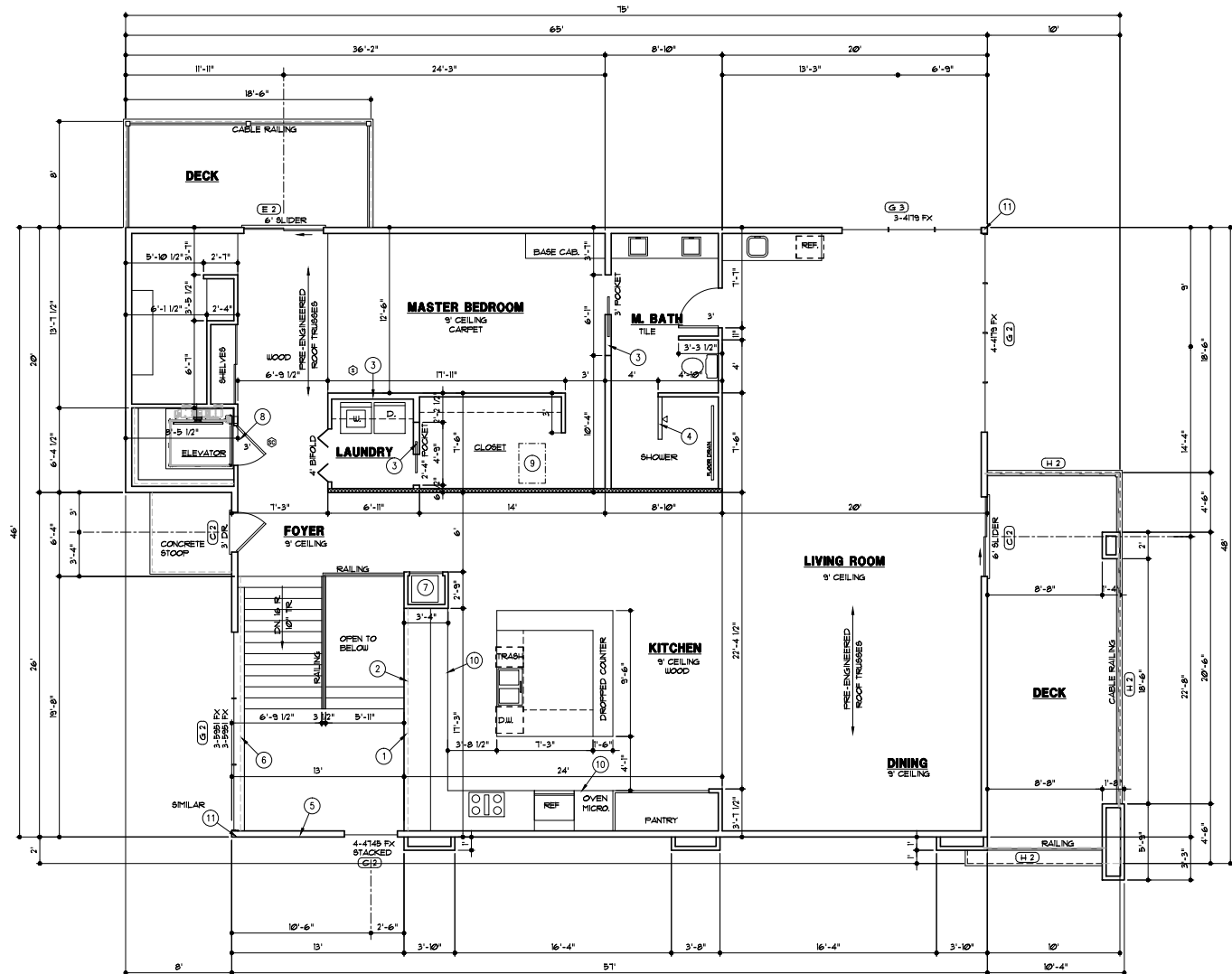
LOCATION	AREA (S.F.)
FIRST FLOOR	2522
LOWER LEVEL	184
TOTAL	2706
GARAGE	1978
LOWER LEVEL (UNFINISHED STORAGE)	420
BASEMENT	255
DECK	310
REAR DECK	148

GENERAL NOTES:

- EXTERIOR WALLS ARE 2x6 STUDS AT 16" O.C. UNLESS OTHERWISE NOTED.
- FOR DECK OR COVERED DECK FRAMING - SEE DETAIL 3/52.
- SEE G3 SHEET FOR LOCATION OF HOLD-DOWN TIES FOR BRACED WALL CONSTRUCTION.

FLOOR PLAN NOTES

- 2x4 STUD WALL TO SUPPORT BASE CABINETS - WALL EXTENDS TO UNDERSIDE OF COUNTER TOP.
- 2x4 STUD WALL BEHIND CABINETS.
- 2x6 STUDS AT 16" O.C.
- 1" TALL SHOWER WALL.
- 19'-2" TALL UNINTERRUPTED STAIRWELL WALL, 2x6 STUDS AT 12" O.C.
- LEDGE OVER CONCRETE AND FINISH WALL.
- DUMB WAITER WITH CABINET DOOR.
- VERIFY ELEVATOR DOOR LOCATION, SHAFT SIZE AND BLOCKING REQUIREMENTS WITH ELEVATOR MANUFACTURER.
- 1'-10"x3" ATTIC ACCESS.
- 12" TALL BORFIT.
- SEE DETAILS 4 AND 5 / G3 FOR CONNECTION DETAILS.



FIRST FLOOR PLAN
1/4"

RELEASE FOR CONSTRUCTION
AS NOTED FOR PLAN REVIEW
DEVELOPMENT SERVICES
LEE'S SUMMIT, MISSOURI

01/26/2022

THE JONES RESIDENCE
4371 S.W. RAIN TREE PARKWAY
LEE'S SUMMIT, MO. 64082

LANDROCK SIGNATURE HOMES LLC.
4335 McGEE ST. • 816-863-5588
KANSAS CITY, MO 64111



DRAWN BY: MP
DATE: 11-10-21
PROJECT NO: 21-009-01

SHEET NO. **A3**

ROOF PLAN LEGEND	
DESCRIPTION	SYMBOL
RIDGES AND HIP	---
VALLEYS	---
EAVES, RAKE & GABLE	---
HOUSE WALLS	---
PURLIN	o
TOP OF PURLIN STRUT OR RIDGE POLE	o
DOT OF PURLIN STRUT OR RIDGE POLE	o
JOIST SIZE AND SPACING	--- 12"x12" ---
UPLIFT VALUE	000'

GENERAL NOTES:

A. THE ROOF STRUCTURE IS PRE-ENGINEERED ROOF TRUSSES UNLESS NOTED OTHERWISE. THE CONTRACTOR SHALL SUBMIT TO THE ARCHITECT THE TRUSS DRAWINGS FOR REVIEW PRIOR TO SUBMITTING TO THE LOCAL AUTHORITY HAVING JURISDICTION AND BEFORE INSTALLATION. FAILURE TO SUBMIT THE TRUSS DRAWINGS SHALL RELIEVE THE ARCHITECT OF ALL LIABILITY FOR THE ENTIRE PLAN BECAUSE TRUSS LOADS AND TRANSFER PATHS ARE ASSUMED LOADS AND CAN ONLY BE VERIFIED UPON REVIEW OF THE TRUSS SHOP DRAWINGS.

B. TRUSSES SHALL BE DESIGNED FOR 10 PSF SNOW LOAD, 10 PSF TOP CHORD DEAD LOAD, 10 PSF BOTTOM CHORD LIVE LOAD, AND 5 PSF BOTTOM CHORD DEAD LOAD. ALLOWABLE LOAD BEARING WALLS ARE NOTED ON THE PLANS.

C. ALL GIRDER TRUSSES SHALL BEAR ON A MINIMUM OF (4) 2x4 (8@ K MAX. LOAD, 10' TALL MAX) OR (3) 2x6 (145 K MAX. LOAD, 10' TALL MAX) STUDS

D. ATTACH EACH END OF SINGLE-PLY TRUSSES TO TOP PLATE WITH STRONG-DRIVE SDCS SCREW (610 LB. UPLIFT) OR SIMPSON HUBA. ATTACH GIRDER TRUSSES TO TOP PLATE WITH CONNECTOR PLATED FOR TRUSS DESIGNER'S CALCULATED UPLIFT LOAD (SEE ENGINEERED TRUSS DRAWINGS).

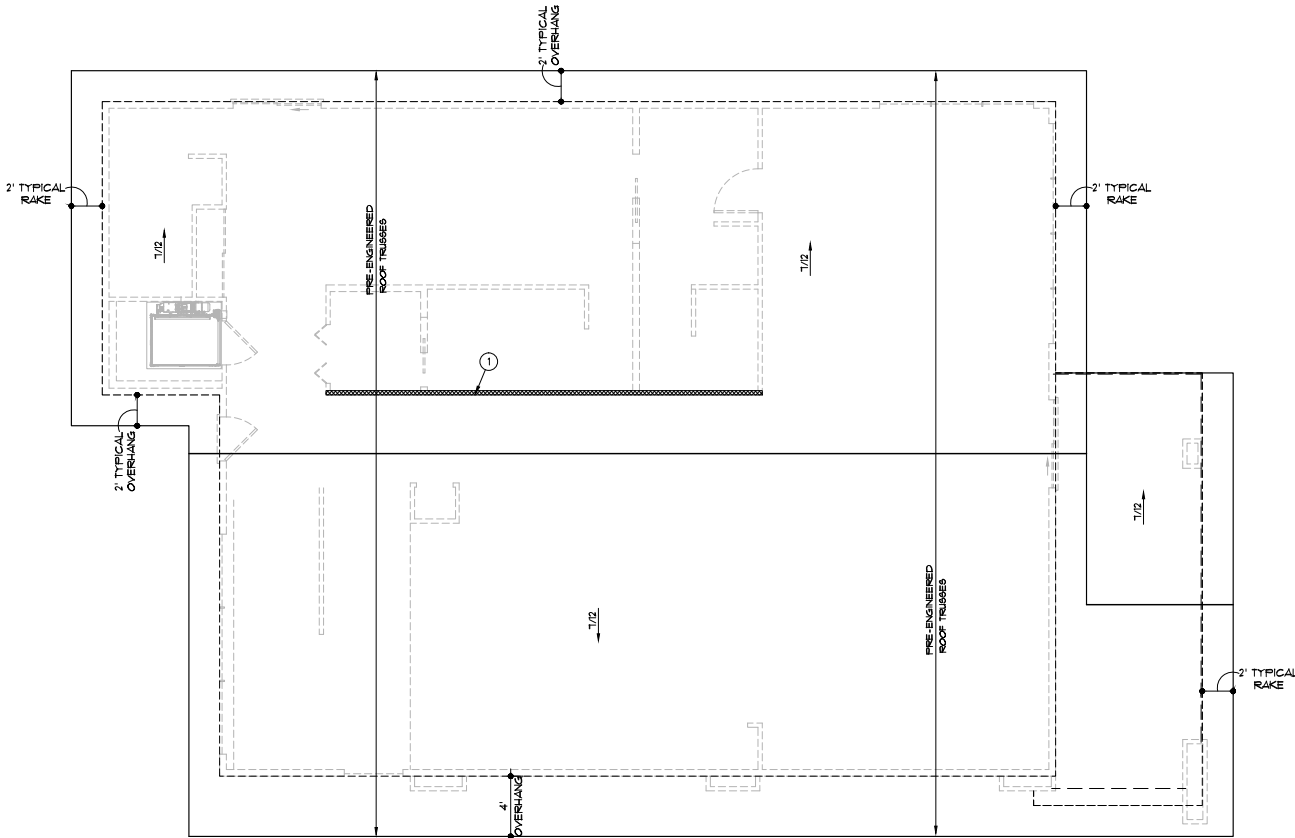
GENERAL NOTES:

A. SEE SHEET G1 FOR LOAD AND DEFLECTION LIMITATIONS

B. ROOFING TO BE COMPOSITION-40 YR. ON 30# FELT ON 7/8" O.S.B. SHEATHING

ROOF PLAN NOTES

1. BEARING WALL OR BEAM BELOW



ROOF PLAN

1/4\"/>

RELEASE FOR CONSTRUCTION

AS NOTED FOR PLAN REVIEW

DEVELOPMENT SERVICES

LEE'S SUMMIT, MISSOURI

01/26/2022

THE JONES RESIDENCE
4871 S.W. RAIN TREE PARKWAY
LEE'S SUMMIT, MO. 64082

LANDROCK SIGNATURE HOMES LLC.
4335 McGEE ST. • 816-863-5588
KANSAS CITY, MO 64111



DRAWN BY: MP
DATE: 11-10-21
PROJECT NO: 21-009-01

SHEET NO. 14

GENERAL NOTES

1. ROOFING TO BE COMPOSITION-40 YR. ON 30" FELT ON 1/8" O.S.B. SHEATHING

ELEVATION NOTES

1. STUCCO SIDING, SEE DETAIL 1/A5. EXTEND STUCCO TO WITHIN 8" OF FINISHED GRADE. 2x6 SMART TRIM AROUND WINDOWS AND DOORS UNLESS NOTED OTHERWISE.
2. SMART LAP SIDING WITH 6" EXPOSURE AND 5/4x6 SMART TRIM AT CORNERS, DOORS AND WINDOWS
3. SMOOTH PANEL SIDING
4. 16"x24" LOUVERED ATTIC VENT
5. CABLE RAILING

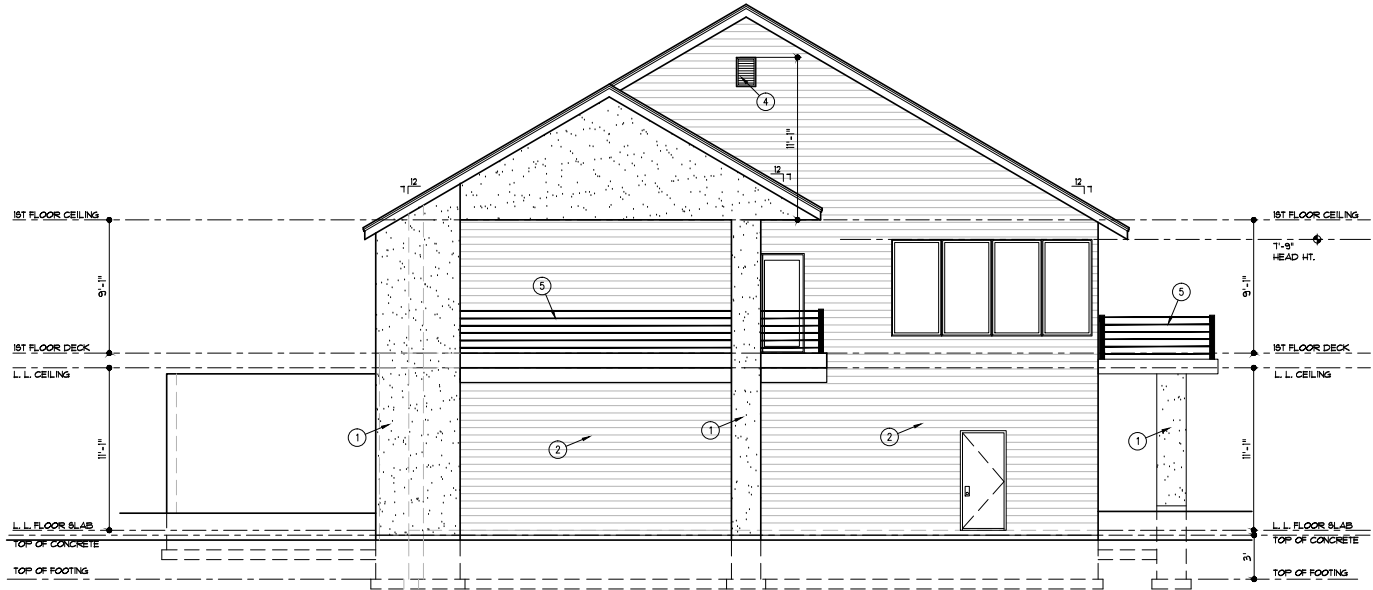
DRAWING INDEX

- A1 FOUNDATION PLAN
- A2 LOWER LEVEL PLAN
- A3 1st FLOOR PLAN
- A4 ROOF PLAN
- A5 ELEVATIONS
- A6 ELEVATIONS
- G1 GENERAL NOTES
- G2 GENERAL DETAILS
- G3 GENERAL DETAILS
- G4 BRACED WALL DETAILS

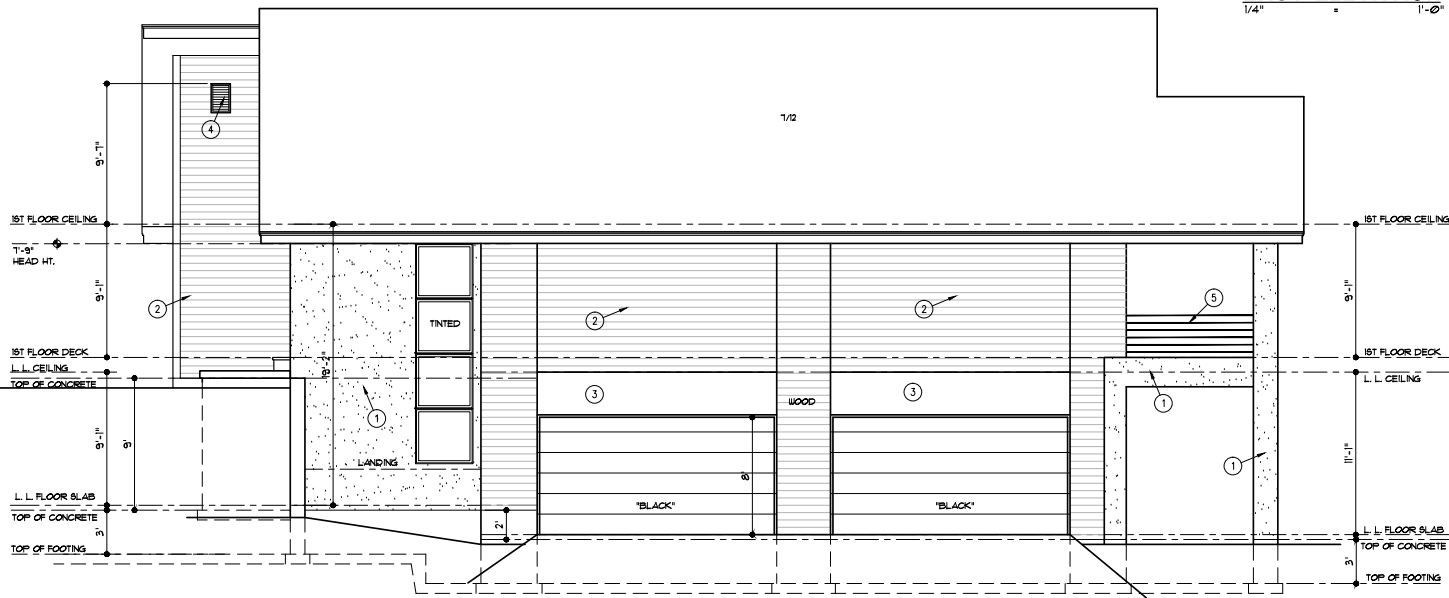
THE BUILDER MAY NEED TO MAKE ADJUSTMENTS TO WINDOW SIZES TO MEET CURRENT EGRESS OR FALL PROTECTION CODE REQUIREMENTS.

- IN GENERAL, PROVIDE CONTROL JOINT LOCATIONS AT FLOOR LINES AND ABOVE DOOR AND WINDOW OPENINGS. NO PANELS SHOULD EXCEED 14'-0" AND NO LINEAL DISTANCE SHOULD BE LONGER THAN 18'.
- WOOD STUD WALL. SEE PLANS FOR SIZE AND SPACING.
 - #15 FELT ON "TYVEK" STUCCO WRAP ON 1/2" C.D.X. PLYWOOD OR 7/16" O.S.B. SHEATHING.
 - GALVANIZED EXPANDED METAL LATH ATTACHED WITH 1" LONG, 11 GAGE NAILS HAVING A 7/16" HEAD OR 7/8", 16 GAGE STAPLES SPACED 6" O.C. MINIMUM.
 - 3 COAT STUCCO SYSTEM: SCRATCH COAT, BROWN COAT, TEXTURE COAT. ALL FIBERGLASS REINFORCED WITH AN OVERALL THICKNESS OF 5/8" OR GREATER. MIX RATIO TO BE ONE 94 LB. BAG OF PORTLAND CEMENT WITH ONE 74 LB. BAG OF TYPE N MASONRY MORTAR WITH 2 1/2 GALLONS CLEAN WATER AND 300 LBS. OF PLASTER SAND. WAIT 48 HOURS BETWEEN FIRST AND SECOND COATS AND 7 DAYS BETWEEN SECOND AND FINISH COAT.
 - GALVANIZED METAL OR PLASTIC WEEP SCREED WITH A MINIMUM VERTICAL ATTACHMENT FLANGE OF 3" O.C. MOUNT 4" MINIMUM ABOVE THE GROUND OR 2" ABOVE PAVEMENT. LAP WEATHER RESISTANT BARRIER OF THE ATTACHMENT FLANGE.

1 STUCCO DETAIL
3/4"x1'-0" A-DTV-09206-01



EAST ELEVATION
1/4" = 1'-0"



SOUTH ELEVATION
1/4" = 1'-0"

THE JONES RESIDENCE
4371 S.W. RAIN TREE PARKWAY
LEE'S SUMMIT, MO. 64082

LANDROCK SIGNATURE HOMES LLC
4335 McGEE ST. • 816-863-5588
KANSAS CITY, MO 64111

STATE OF MISSOURI
JAMES L. LANDROCK
REGISTERED ARCHITECT
11-10-21

DRAWN BY: MP
DATE: 11-10-21
PROJECT NO: 21-009-01

SHEET NO. A5

RELEASE FOR CONSTRUCTION
AS NOTED FOR PLAN REVIEW
DEVELOPMENT SERVICES
LEE'S SUMMIT, MISSOURI

01/26/2022

GENERAL NOTES

1. ROOFING TO BE COMPOSITION-40 YR. ON 30" FELT ON 1/8" O.S.B. SHEATHING

ELEVATION NOTES

1. STUCCO SIDING, SEE DETAIL 1/A5. EXTEND STUCCO TO WITHIN 8" OF FINISHED GRADE. 2"x6" SMART TRIM AROUND WINDOWS AND DOORS UNLESS NOTED OTHERWISE.

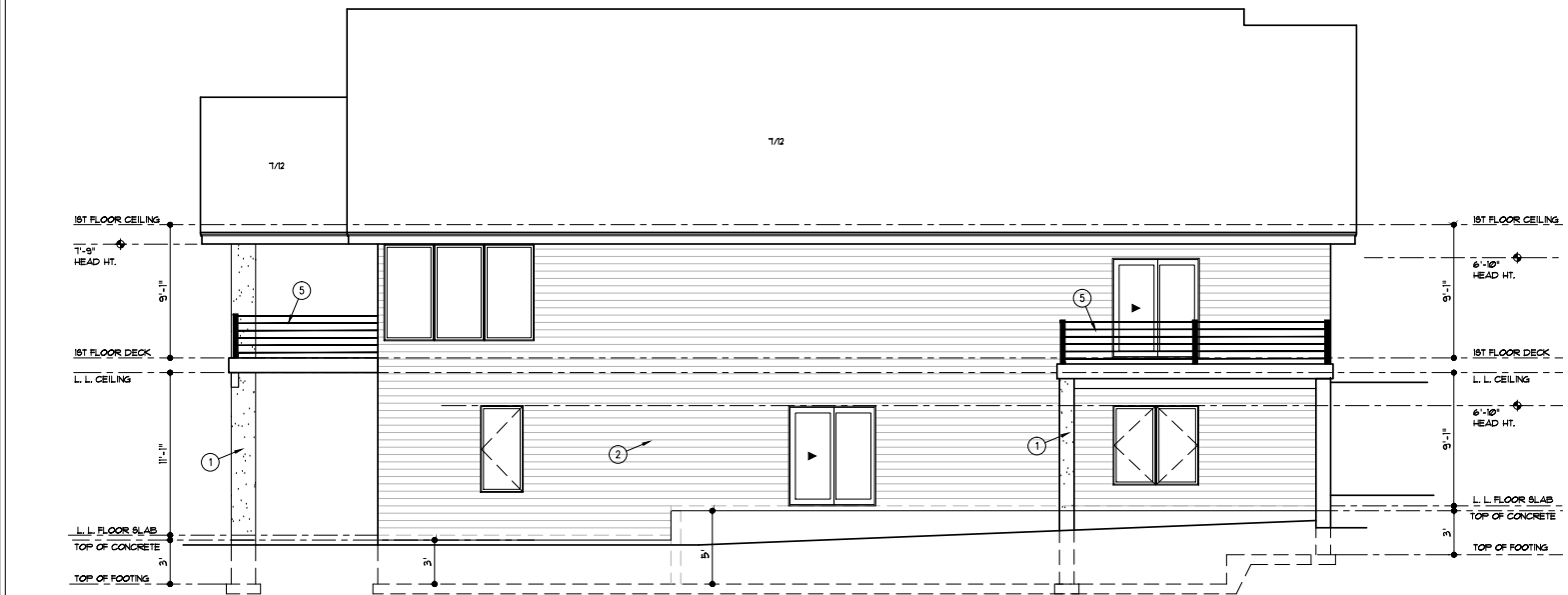
2. SMART LAP SIDING WITH 6" EXPOSURE AND 5/4"x6" SMART TRIM AT CORNERS, DOORS AND WINDOWS

3. SMOOTH PANEL SIDING

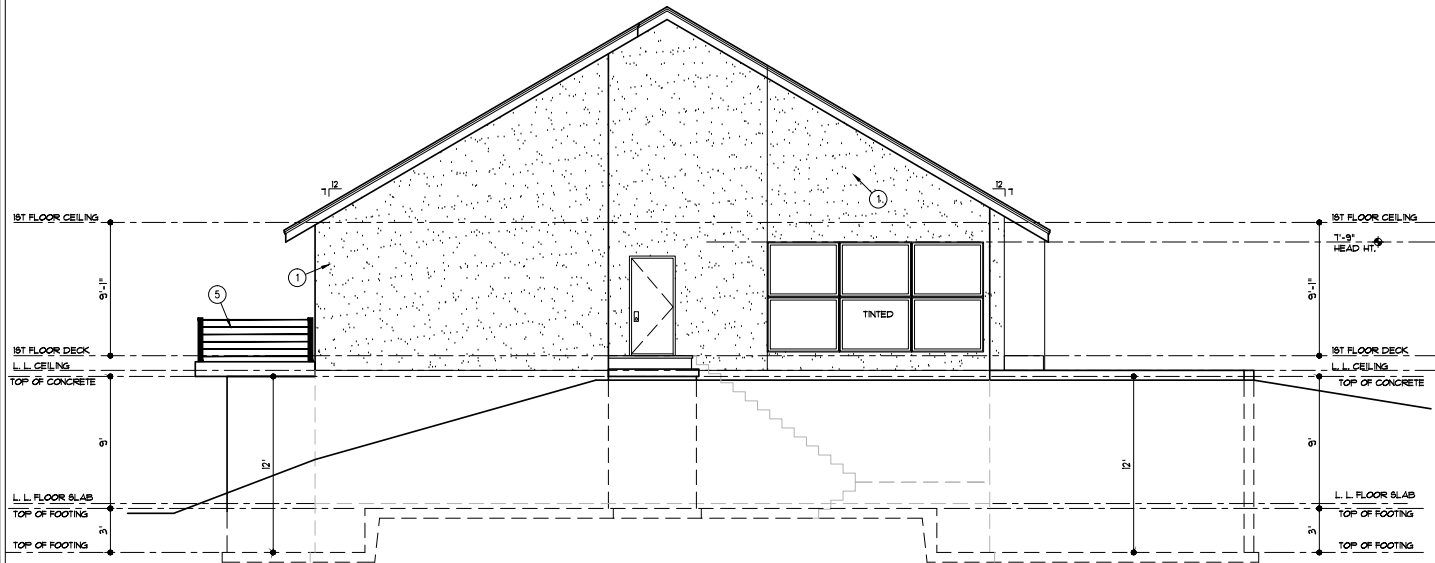
4. 16"x24" LOUVERED ATTIC VENT

5. CABLE RAILING

THE BUILDER MAY NEED TO MAKE ADJUSTMENTS TO WINDOW SIZES TO MEET CURRENT EGRESS OR FALL PROTECTION CODE REQUIREMENTS.



NORTH ELEVATION



WEST ELEVATION

THE JONES RESIDENCE
4871 S.W. RAIN TREE PARKWAY
LEE'S SUMMIT, MO. 64082

LANDROCK SIGNATURE HOMES LLC.
4335 McGEE ST. • 816-863-5588
KANSAS CITY, MO 64111



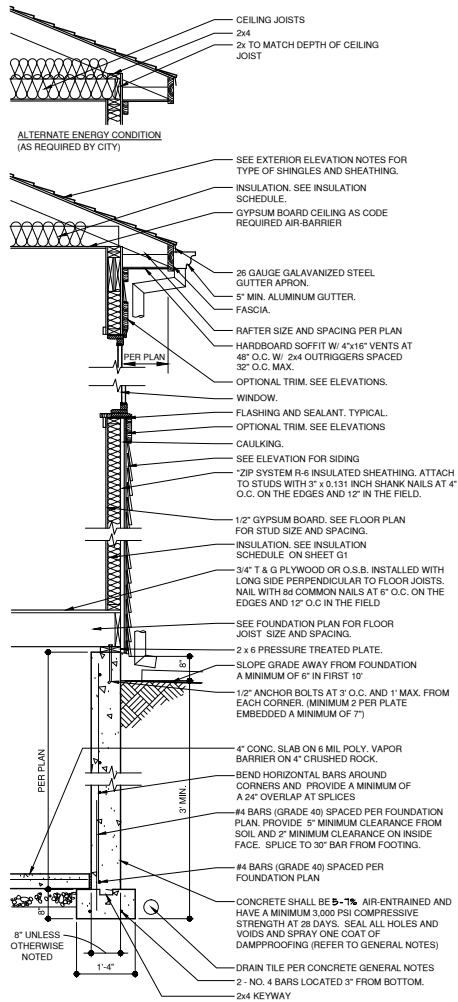
DRAWN BY: MP
DATE: 11-10-21
PROJECT NO: 21-009-01

SHEET NO. 16

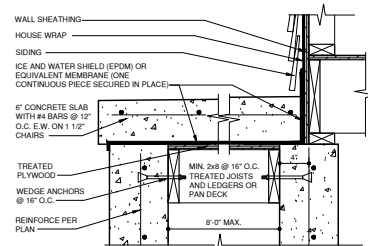
RELEASE FOR CONSTRUCTION
AS NOTED FOR PLAN REVIEW
DEVELOPMENT SERVICES
LEE'S SUMMIT, MISSOURI

01/26/2022

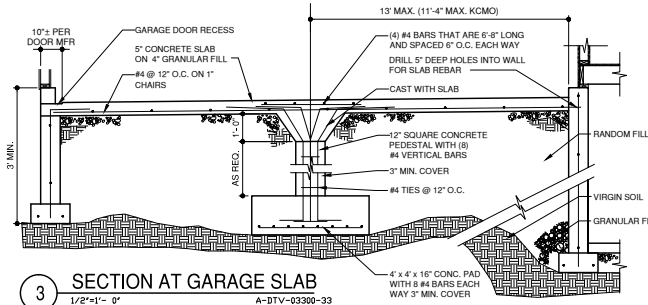
References



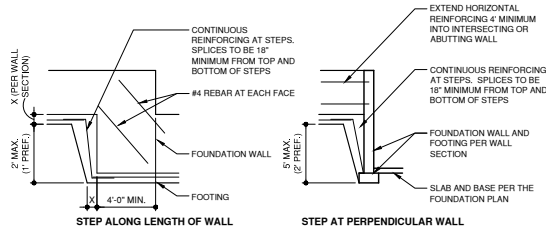
1 WALL SECTION
3/4\"-1'-0\" A-DTW-03302-19 E



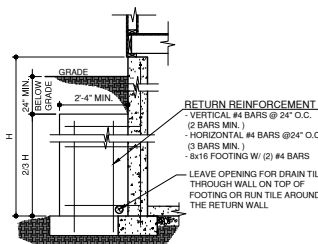
4 SUSPENDED STOOP DETAIL
1 1/2\"-1'-0\" A-DTV-03300-35 E



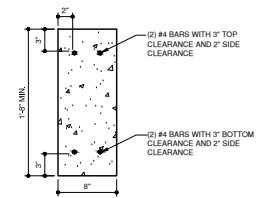
3 SECTION AT GARAGE SLAB
1/2\"-1'-0\" A-DTV-03300-33



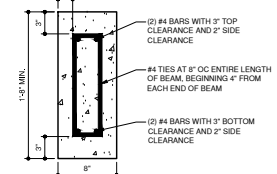
2 ELEVATION AT FOUNDATION STEP
1/4\"-1'-0\" A-DTC-03300-01



8 RETURN WALL DETAIL
1/2\"-1'-0\" A-DTV-03300-34



NOTES:
• MAX. 3'-0\" IN LENGTH
• BARS SHALL EXTEND MIN. 2'-0\" PAST OPENING ON EACH SIDE



NOTES:
• MAX. 6'-0\" IN LENGTH
• BARS SHALL EXTEND MIN. 2'-0\" PAST OPENING ON EACH SIDE

11 CONCRETE HEADER DETAILS
1 1/2\"-1'-0\" A-DTV-03300-46

RELEASE FOR CONSTRUCTION
AS NOTED FOR PLAN REVIEW
DEVELOPMENT SERVICES
LEE'S SUMMIT, MISSOURI

01/26/2022

THE JONES RESIDENCE
4871 S.W. RANTRREE PARKWAY
LEE'S SUMMIT, MO. 64082

LANDROCK SIGNATURE HOMES LLC.
4335 McGEE ST. • 816-863-5588
KANSAS CITY, MO 64111



DRAWN BY: MFP
DATE: 11-10-21
PROJECT NO: 21-009-01

SHEET NO. 92

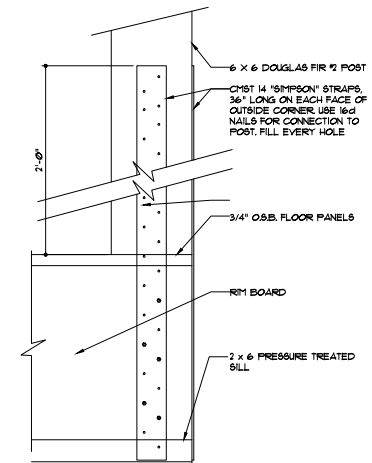
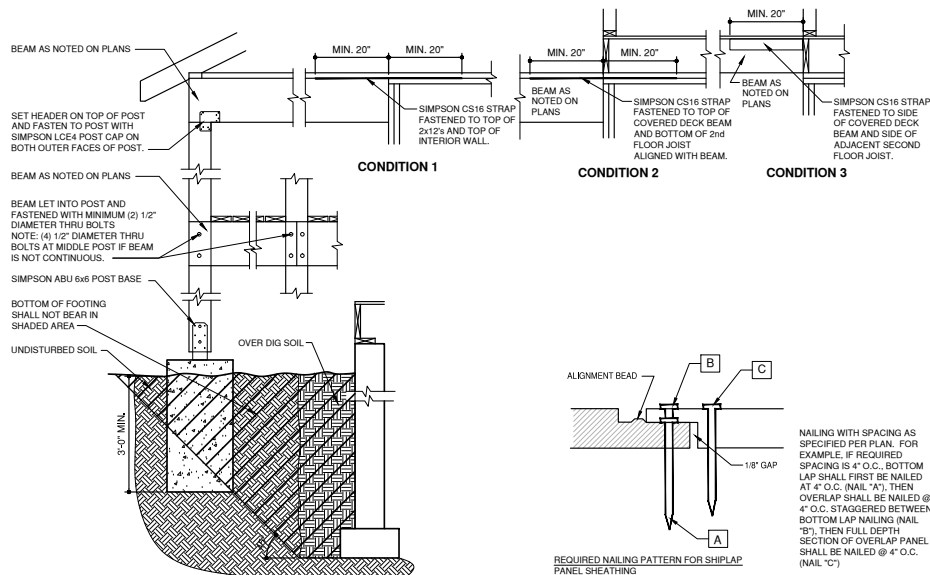
TABLE R602.10.6.4
TENSION STRAP CAPACITY REQUIRED FOR RESISTING WIND PRESSURES
PERPENDICULAR TO METHOD PFH, PFG, AND GS-PF BRACED WALL PANELS

2-9-21

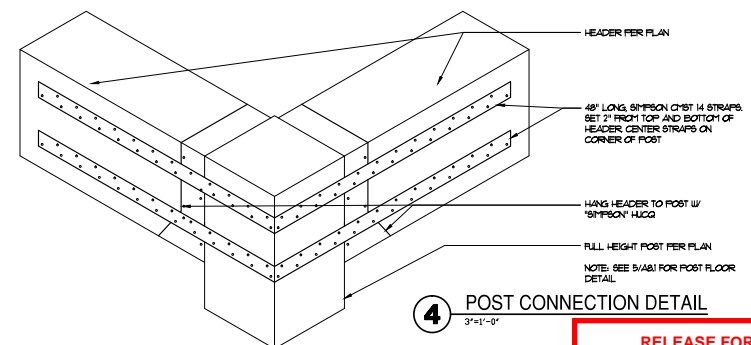
MINIMUM WALL STUD FRAMING NORMAL SIZE AND GRADE	MAXIMUM POST WALL HEIGHT (feet)	MAXIMUM TOTAL WALL HEIGHT (feet)	MAXIMUM OPENING WIDTH (feet)	TENSION STRAP CAPACITY REQUIRED (pounds) a,b					
				ULTIMATE DESIGN WIND SPEED (mph)					
				110	115	130	110	115	130
				EXPOSURE B			EXPOSURE C		
2 x 4 NO. 2 GRADE	0	10	18	1,000	1,000	1,000	1,000	1,000	1,050
			9	1,000	1,000	1,000	1,000	1,000	1,750
			16	1,000	1,025	2,050	2,075	2,500	3,950
	1	10	18	1,200	1,275	2,375	2,400	2,850	DR
			9	1,000	1,000	1,475	1,500	1,875	3,125
			16	1,775	2,175	3,525	3,550	4,125	DR
	2	10	18	2,075	2,500	3,950	3,975	DR	DR
			9	1,150	1,500	2,650	2,675	3,175	DR
			16	2,875	3,375	DR	DR	DR	DR
	2	12	18	3,425	3,975	DR	DR	DR	DR
			9	2,275	2,750	DR	DR	DR	DR
			12	3,225	3,775	DR	DR	DR	DR
2 x 6 STUD GRADE	2	12	9	1,000	1,000	1,700	1,700	2,025	3,050
			16	1,825	2,150	3,225	3,225	3,675	DR
			18	2,200	2,550	3,725	3,750	DR	DR
	4	12	9	1,450	1,750	2,700	2,725	3,125	DR
			16	2,050	2,400	DR	DR	DR	DR
			18	3,50	3,800	DR	DR	DR	DR

a. DR = DESIGN REQUIRED
b. STRAP SHALL BE INSTALLED IN ACCORDANCE WITH MANUFACTURER'S RECOMMENDATIONS.

SEE SHEET G3 FOR BRACED WALL DIAGRAMS



5 HOLD DOWN STRAP DETAIL
3/4"=1'-0"



4 POST CONNECTION DETAIL
3'-1"=0"

THE JONES RESIDENCE
4871 S.W. RANTRREE PARKWAY
LEE'S SUMMIT, MO. 64082

LANDROCK SIGNATURE HOMES LLC.
4335 McGEE ST. • 816-863-5588
KANSAS CITY, MO 64111



DRAWN BY: MJP
DATE: 11-10-21
PROJECT NO: 21-009-01

SHEET NO. **G3**

RELEASE FOR CONSTRUCTION
AS NOTED FOR PLAN REVIEW
DEVELOPMENT SERVICES
LEE'S SUMMIT, MISSOURI

01/26/2022

