

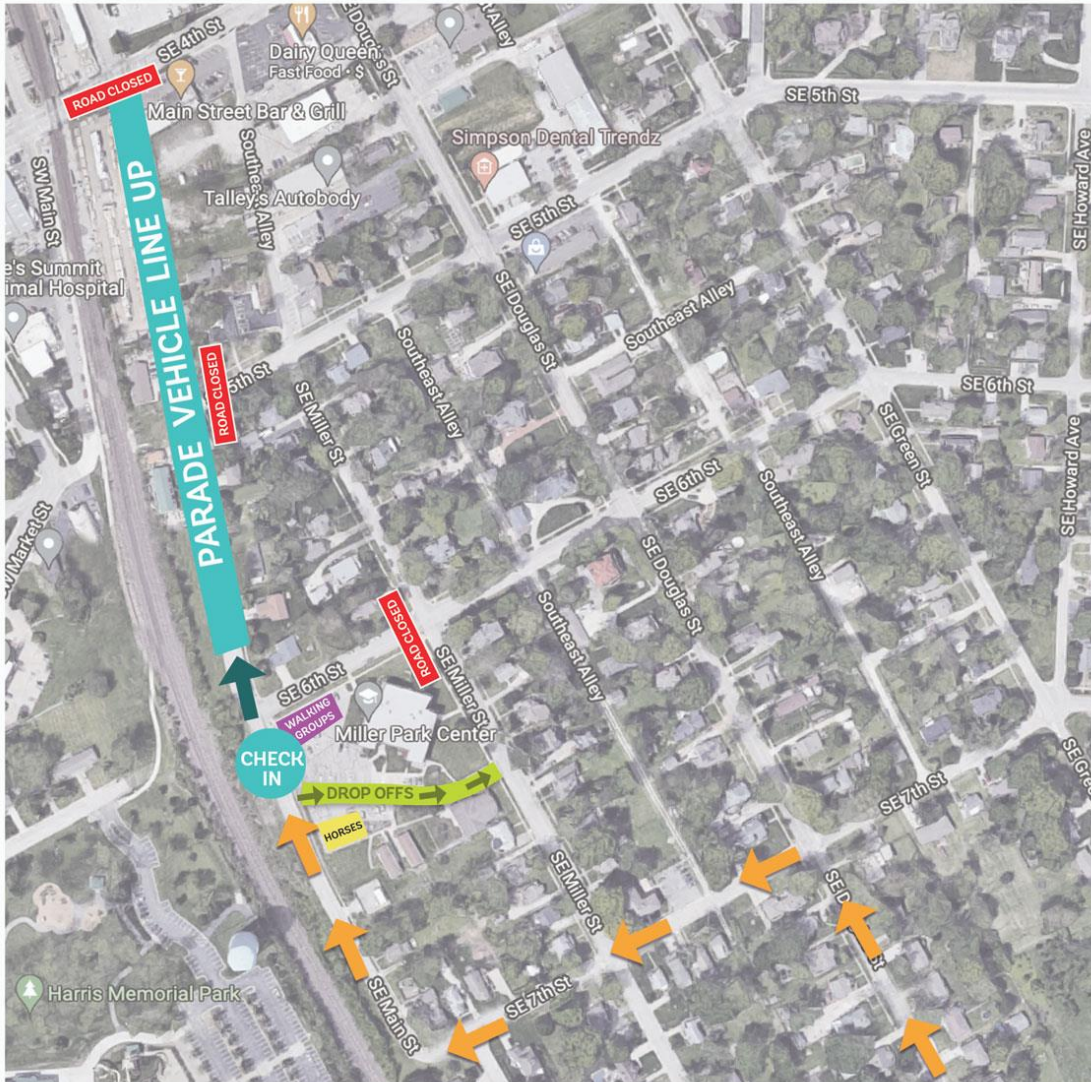
**Special Event Checklist**  
**Downtown Lee's Summit Main Street**  
**Emerald Isle Parade**






- 1) Julie Cook  
Events & Promotions Director  
Downtown Lee's Summit Main Street  
13 SE Third Street  
Lee's Summit, MO 64063  
(816) 246-6598
- 2) City of Lee's Summit
- 3) LSR-7 has approved use of the parking lot at Miller Park Center (600 SE Miller St). Parade entries will use this area to drop-off participants, and walking groups and equestrian entries will gather in this lot.
- 4) The attached maps show parade vehicles will line up on SE Main Street, south of 4<sup>th</sup> Street to 6<sup>th</sup> Street. The parade route will proceed north on SE Main Street, turn east on 3<sup>rd</sup> Street, then south on Green Street. Once the parade crosses 5<sup>th</sup> & Green Street, LSPD and event volunteers will direct entries to pull over to the right side of the street to unload, or proceed in the left lane to keep moving. An LSPD Officer will be stationed at 6<sup>th</sup> & Green Street to assist floats as they merge back into traffic.
- 5) March 12, 2022
- 6) The Emerald Isle Parade will begin at Noon and end at approximately 1:30 p.m. Line-up begins at 11 a.m. Entries will include floats, marching units, businesses, civic organizations, political candidates. Each entry is limited to 1 vehicle, and the parade may not exceed 100 entries. A judging stand will be placed at 3<sup>rd</sup> and Douglas Streets at 9:30 a.m. The event will also include a Gold Coin Hunt in Howard Station Park at 11:30 a.m., and a few food vendors in City Hall Plaza. Anticipated attendance is 7,000. We request to place a banner on the fence in Howard Station Park, advertising the date of the event.
- 7) Attached
- 8) Four portable restroom units will be placed at Miller Park Center at 600 SE Miller St. Four units will be placed at City Hall Plaza. Two units will be placed behind Smoke Brewing Company.
- 9) N/A
- 10) On file with the City of Lee's Summit.
- 11) Electrical Plan: We need access to the tree whips at the intersection of 3<sup>rd</sup> and Douglas streets. Please have power live from 8am-3pm on March 12<sup>th</sup>.

## Parade Line Up

Parade vehicles will line up on SE Main Street between 4<sup>th</sup> & 6<sup>th</sup> Street starting at 11 a.m. "ROAD CLOSED" denotes an LSPD vehicle will close the street to thru traffic.

### EMERALD ISLE PARADE LINE UP MAP 2022



-  **ARRIVAL:**  
Head west on 7th street and north on SE Main to check-in your vehicle or drop off parade participants.
-  **DROP OFFS:**  
Turn into Miller Park Center to drop off, then exit onto SE Miller street. Park in the surrounding neighborhood, or any public lot in Downtown, then walk to SE Main Street to join your parade float.
-  **PARADE VEHICLE LINE UP:**  
Check-in, continue on SE Main to line up. \*Entries will not have an assigned spot, and will line up in rows.
-  **WALKING GROUPS:**  
If your entry has no vehicle, gather in the designated area of Miller Park Center Parking Lot. Parade staff will add your entry to the line up.
-  **HORSES:**  
Gather in the south corner of Miller Park Center Parking Lot. Parade staff will add your entry to the line up.

## ***Street Closures***

DLSMS will post notices for the public to remove all cars from the route by 9:30 a.m. LSPD will use their vehicles to close streets along the route, starting with 3<sup>rd</sup> & Douglas Street at 9:30 a.m. SE Main Street between 4<sup>th</sup> & 6<sup>th</sup> Streets must be closed before 11 a.m. to allow floats to line up.

## ***Parade Route***

LSPD vehicles will be placed along the route for the parade to begin at Noon.



## ***End of the Parade***

Once the parade crosses 5<sup>th</sup> Street, LSPD and parade volunteers will direct entries to pull over to the right to unload, or proceed in the left lane to keep moving. An LSPD vehicle at 6<sup>th</sup> & Green Street will assist as floats re-enter traffic.